

# GeneMark

Version 2.5p (09.08.06)

Copyright 1993 - M. Borodovsky, J. McIninch

## PROGRAM INFORMATION

Sequence : Gordonia phage EMOore complete sequence, 58844 bp, circularly permuted, Cluster DE  
Analysis Date : 6/26/17 at 13:23:21  
Pages : 29  
Sequence Length : 58844 bp  
GC Content : 68.03%

Window Length : 96 bp  
Window Step : 12 bp  
Threshold Value : 0.500

PS-Version : 1.2

GeneMark Options : PostScript graph,  
Mark ORFs / splice sites,  
List ORFs,  
List regions and/or splice sites,

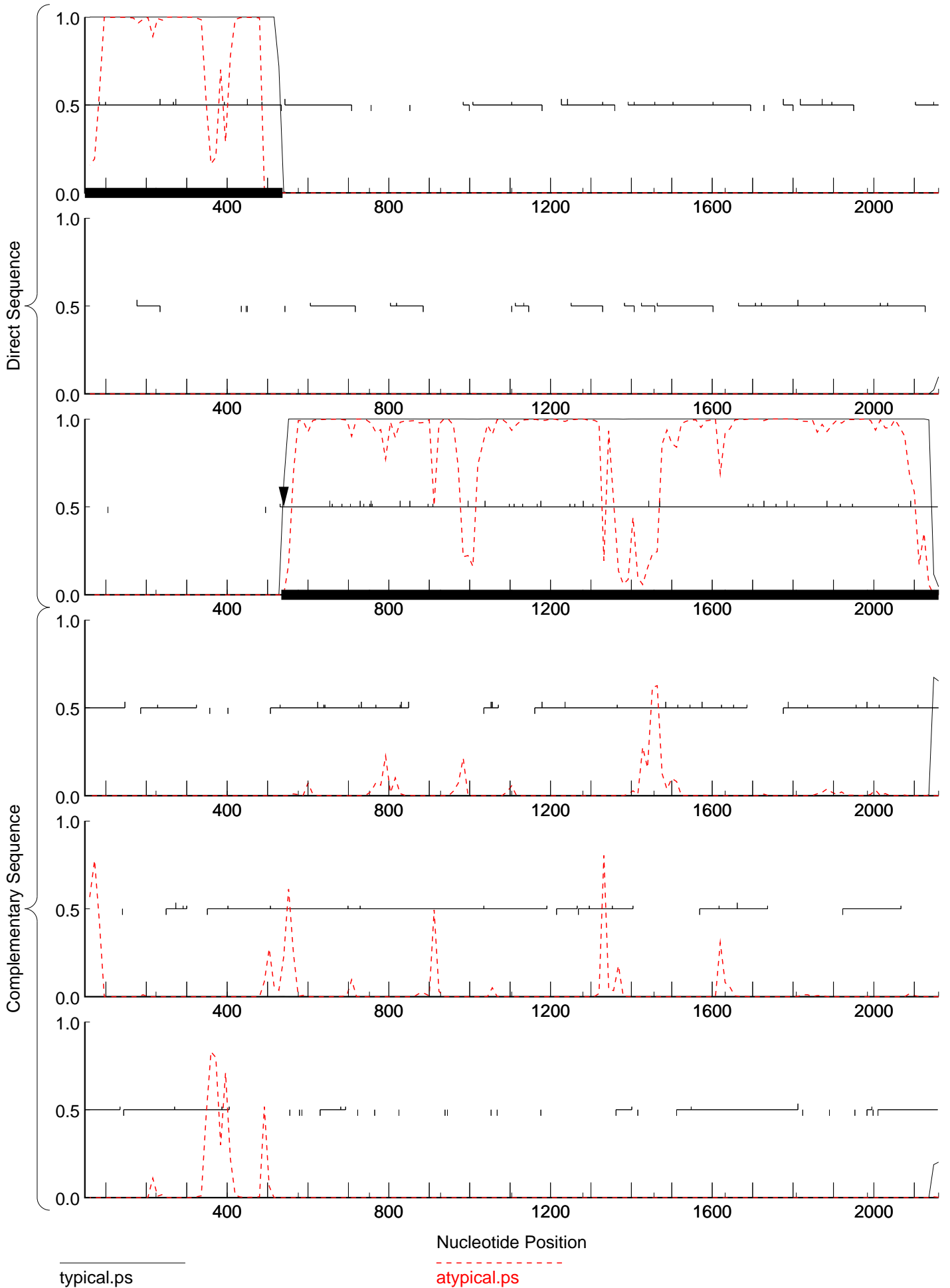
## Matrix notes & comments

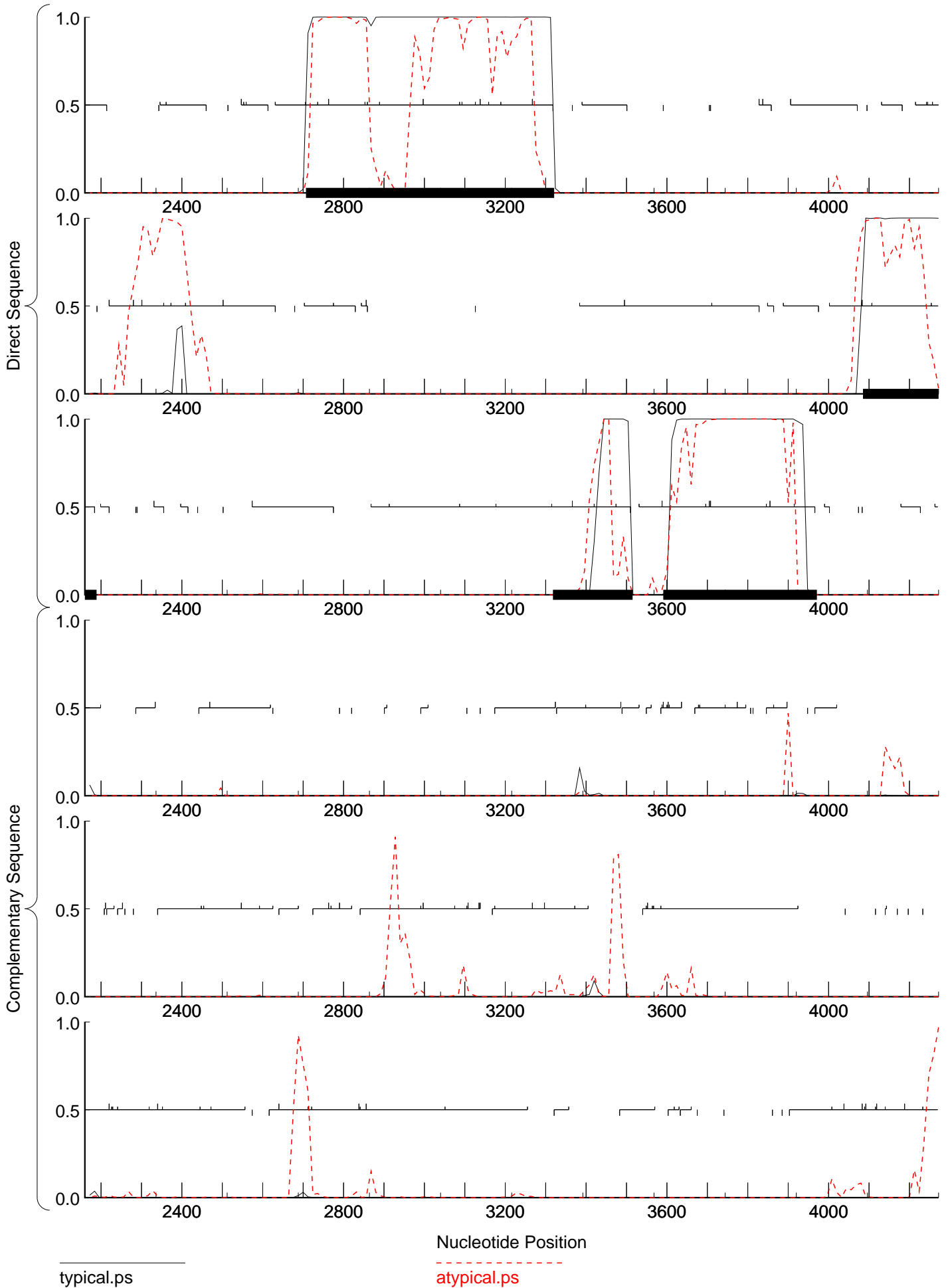
Training set derived by GeneMarkS, 4.30 October 2014  
Mon Jun 26 13:23:21 2017

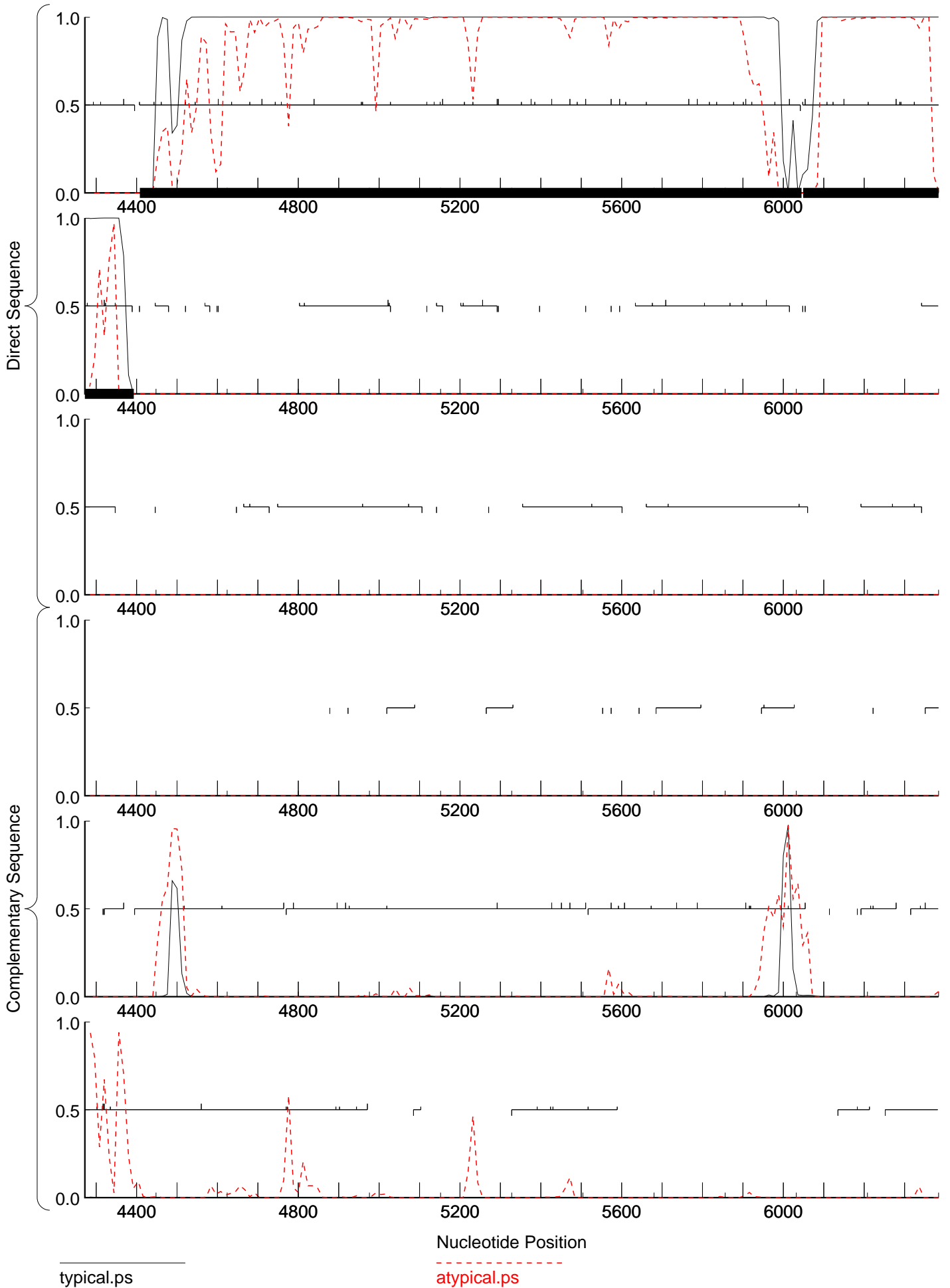
## MATRIX INFORMATION

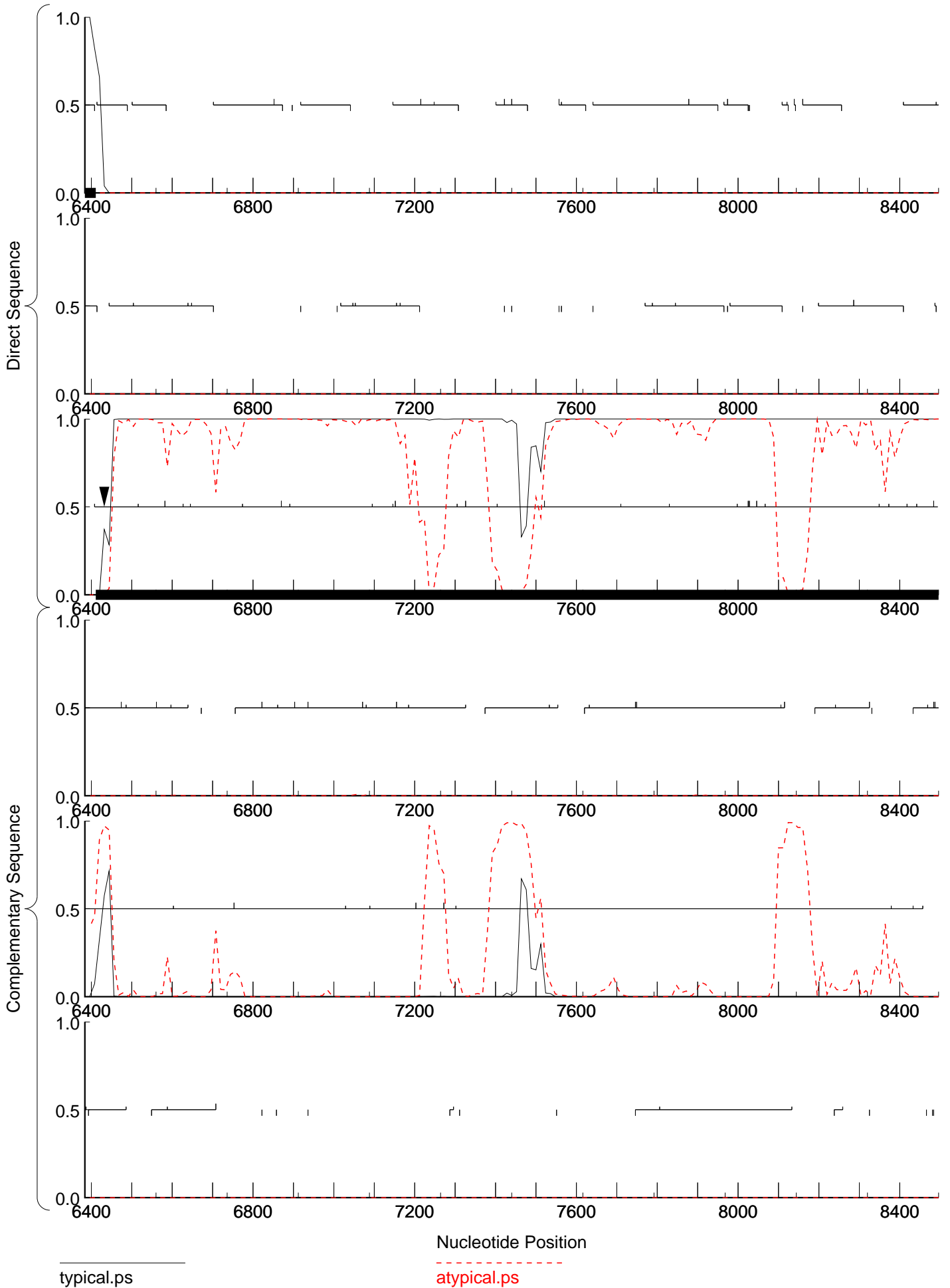
Matrix : -  
Author : -  
Order : 4

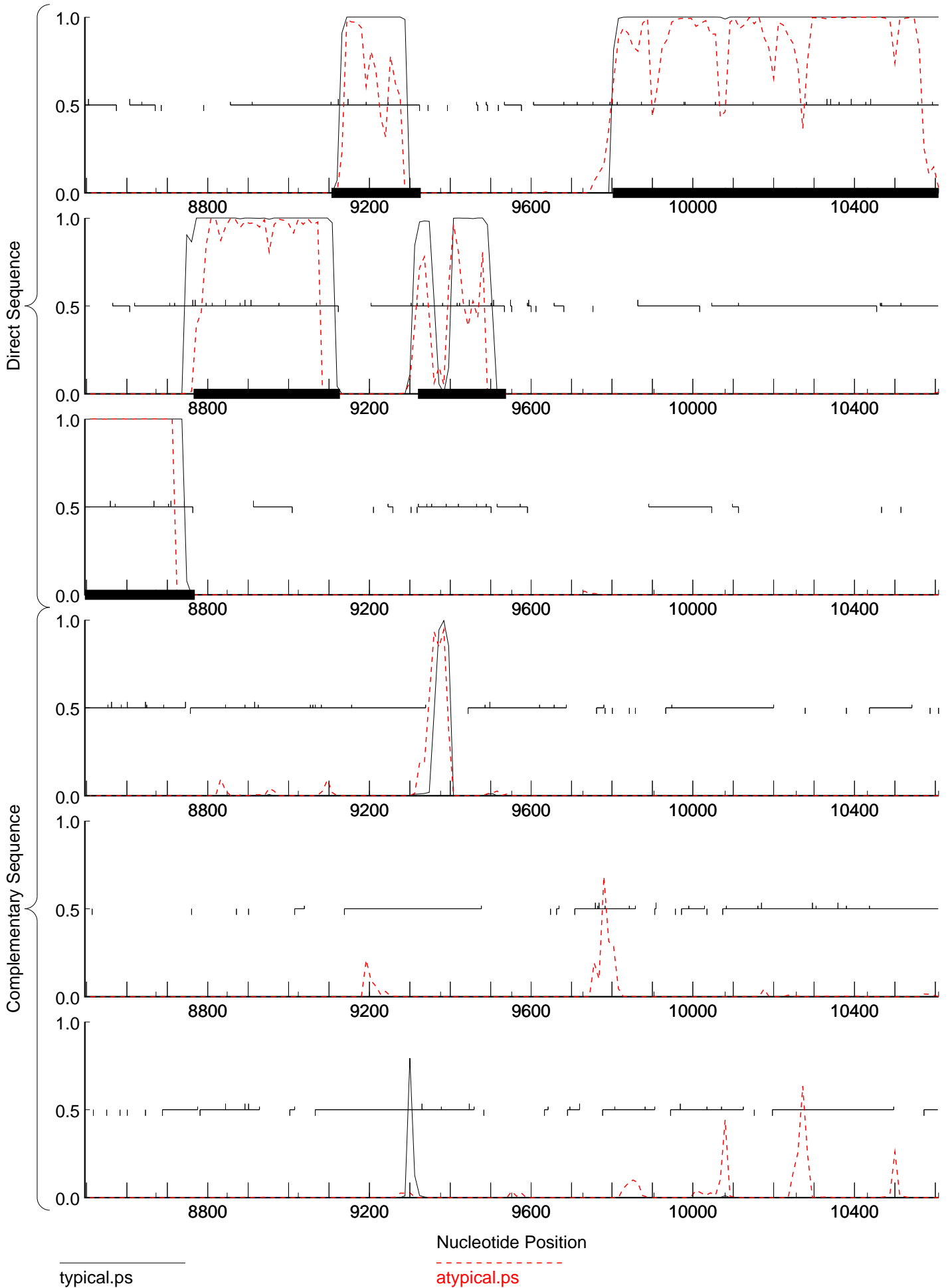
Send questions / comments to:  
Dr. M. Borodovsky  
Georgia Institute of Technology  
School of Biology  
Atlanta, GA 30332-0230

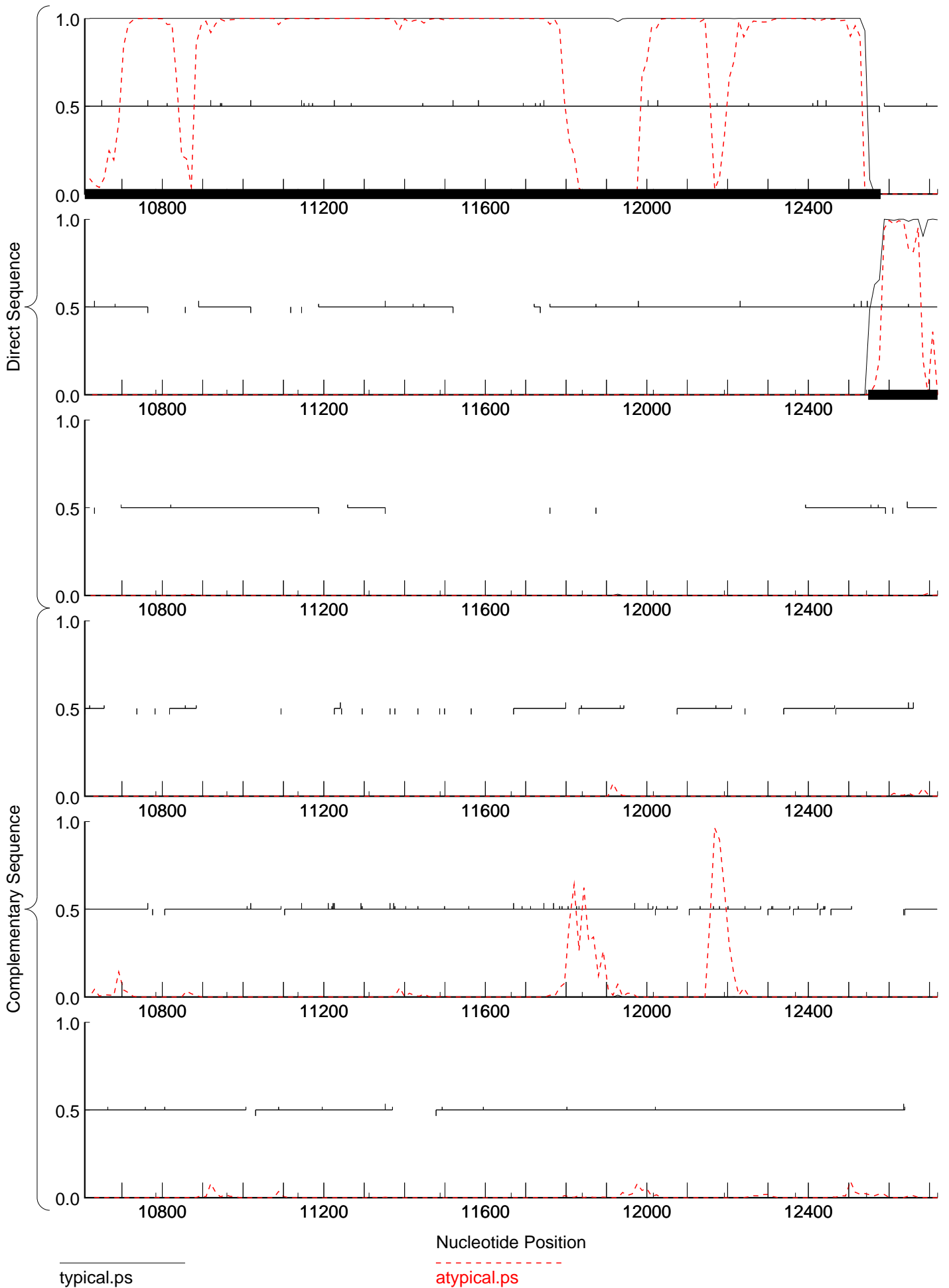


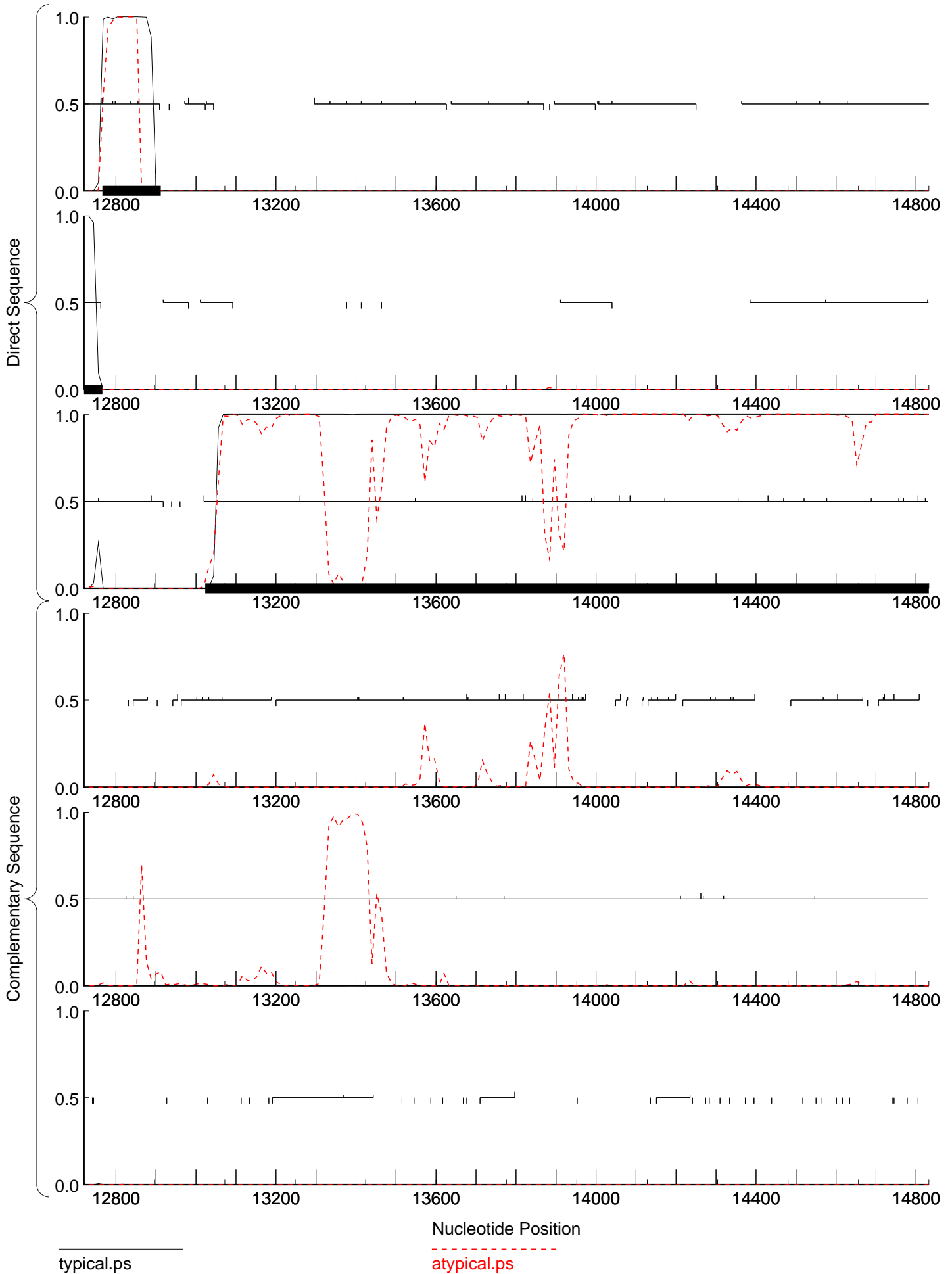




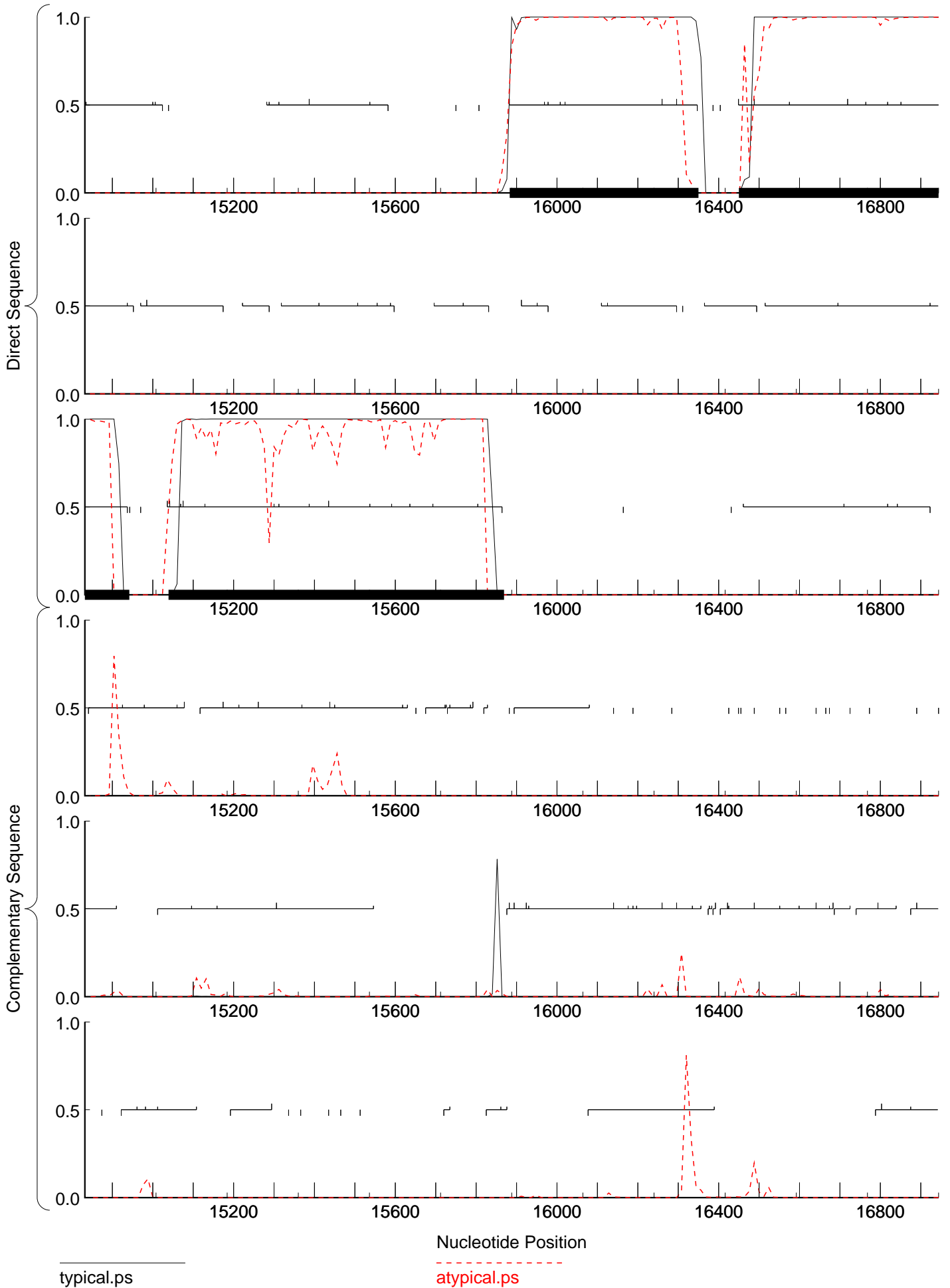


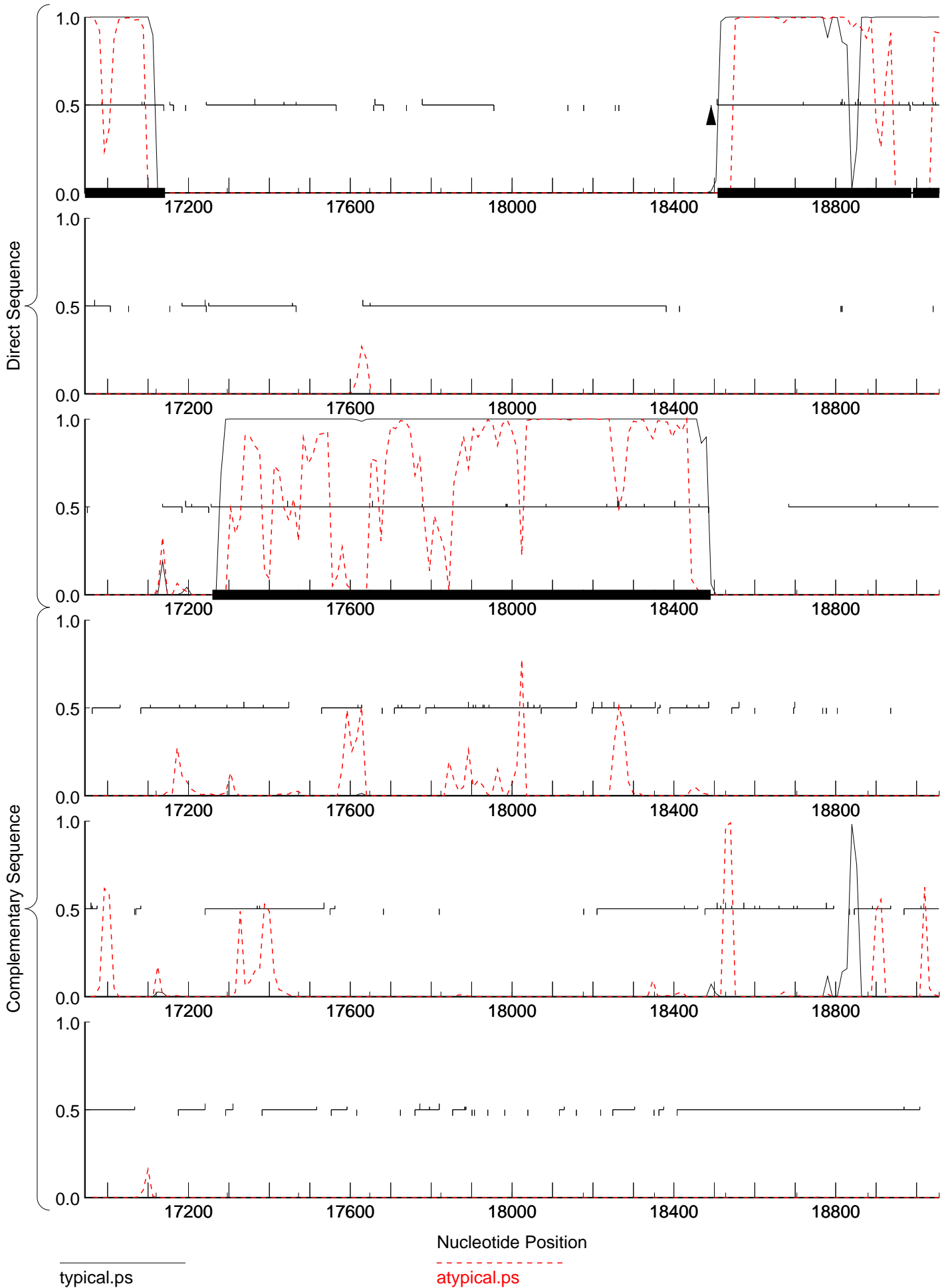


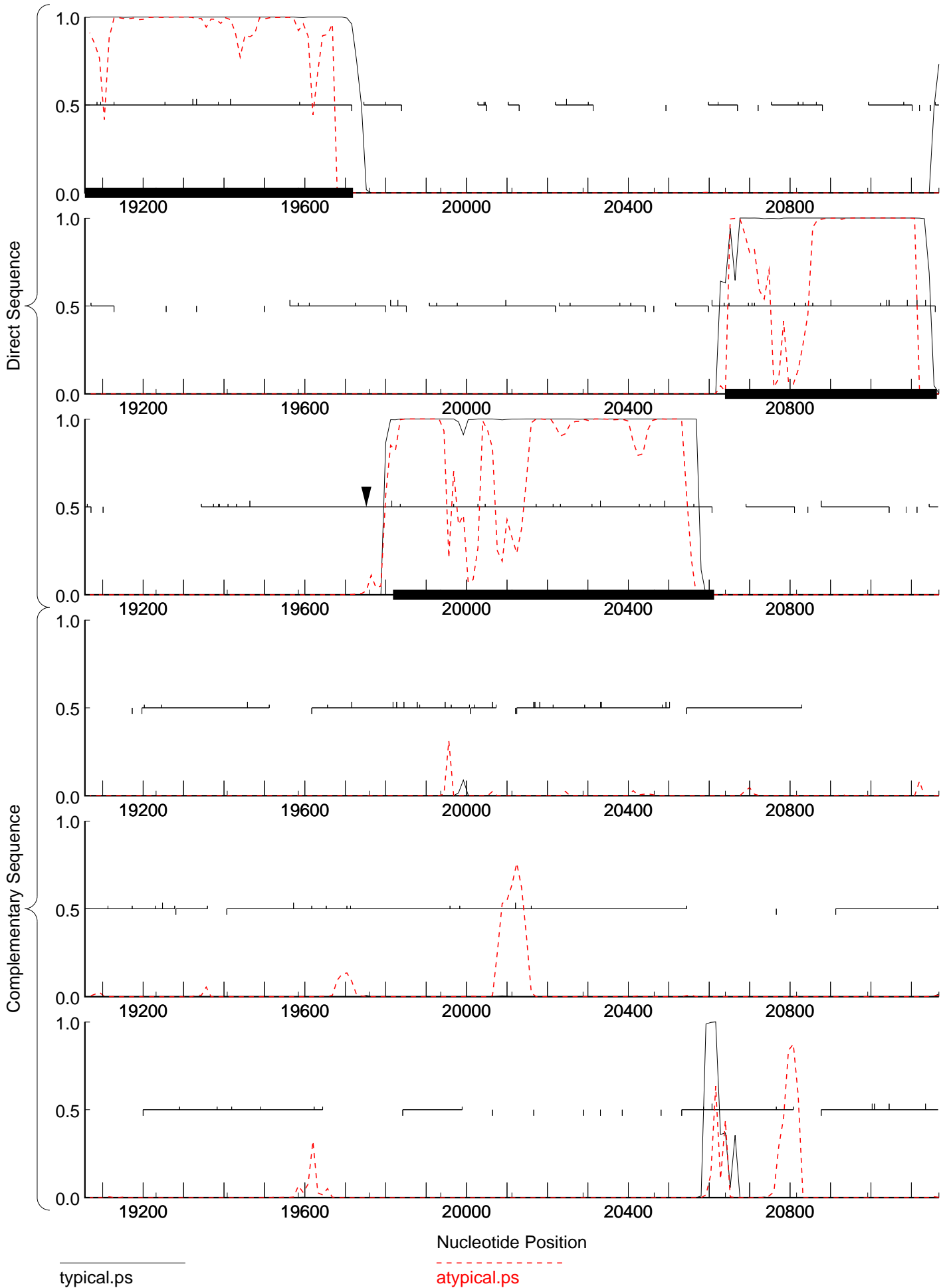


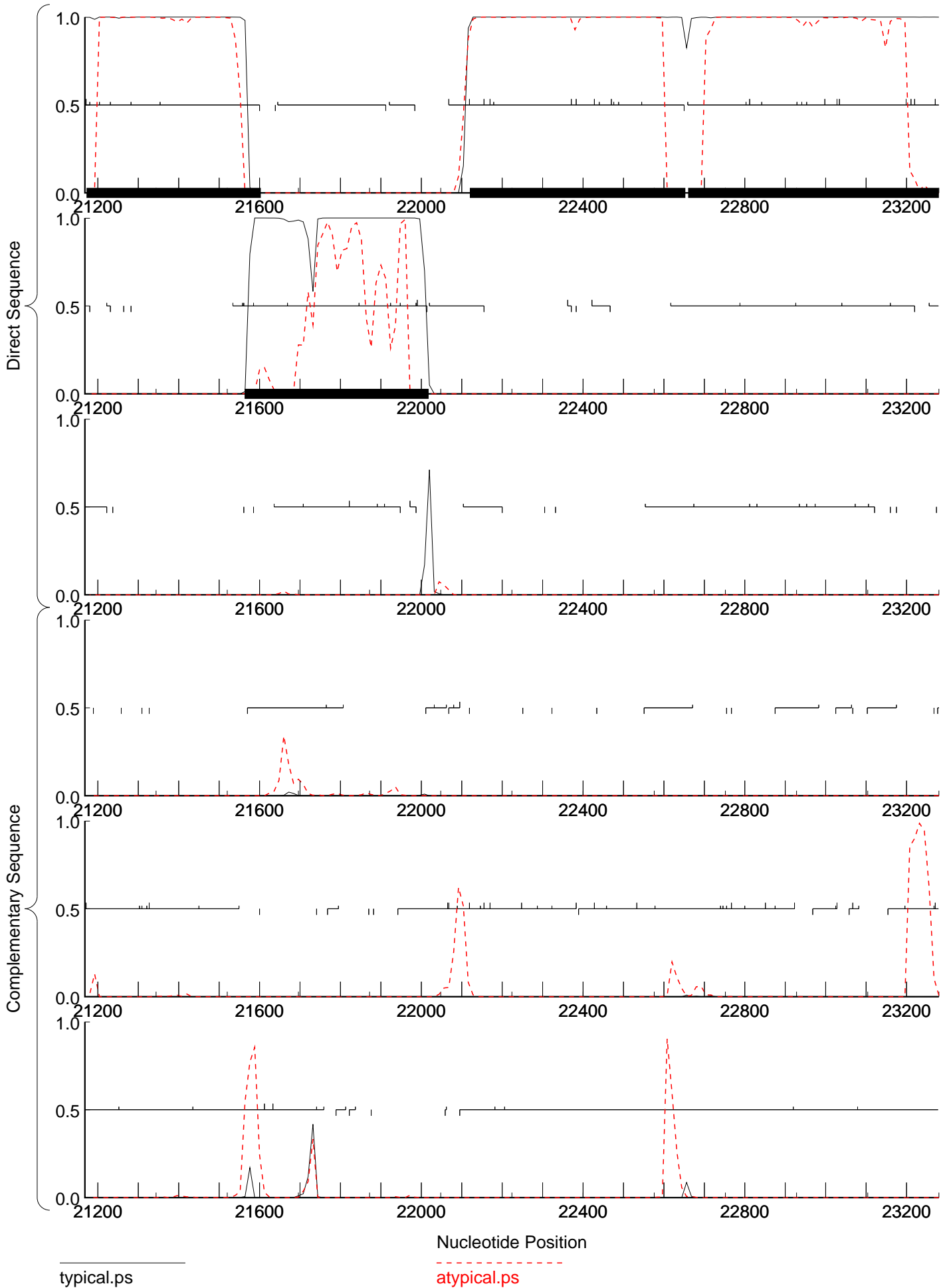


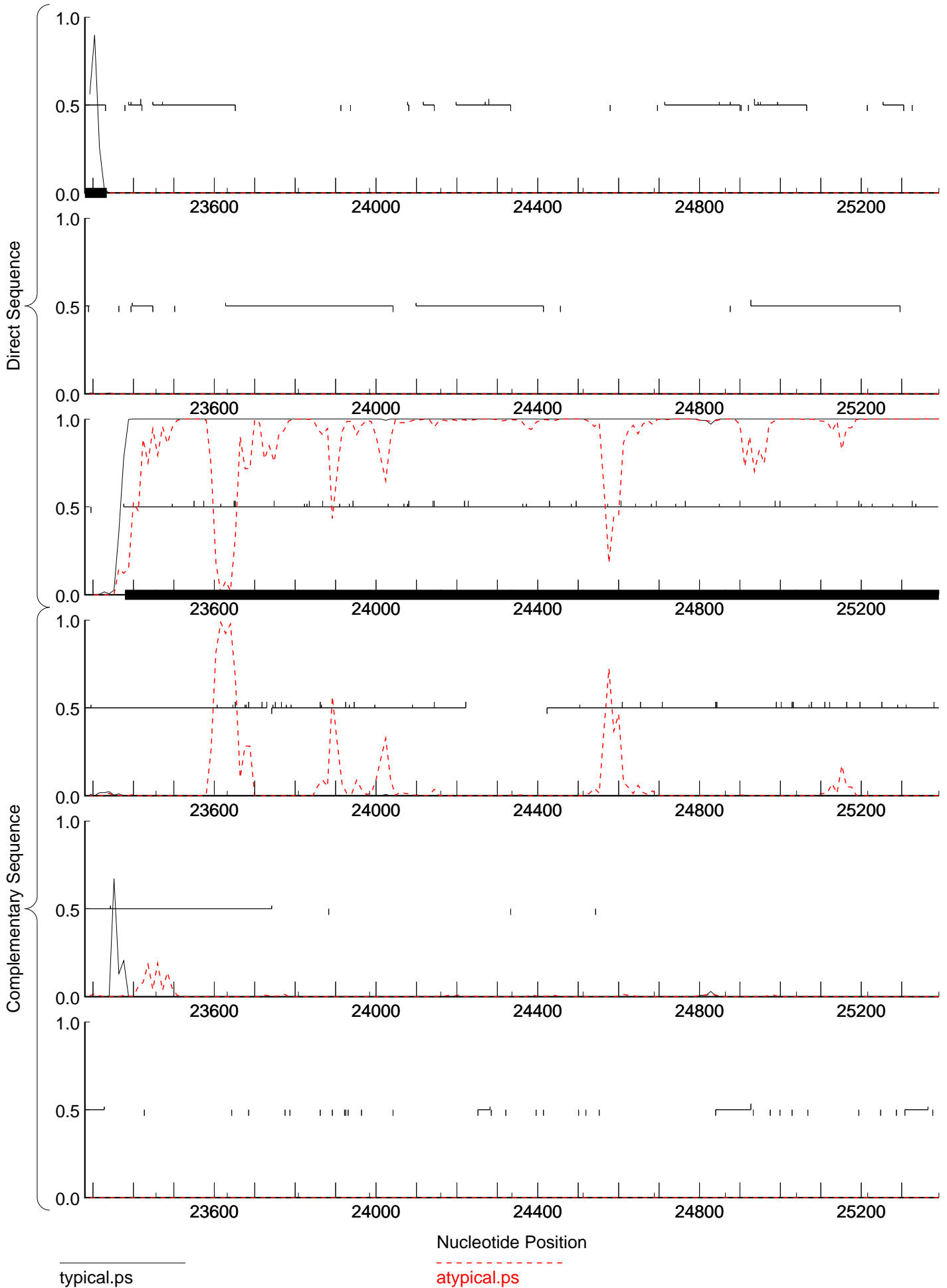


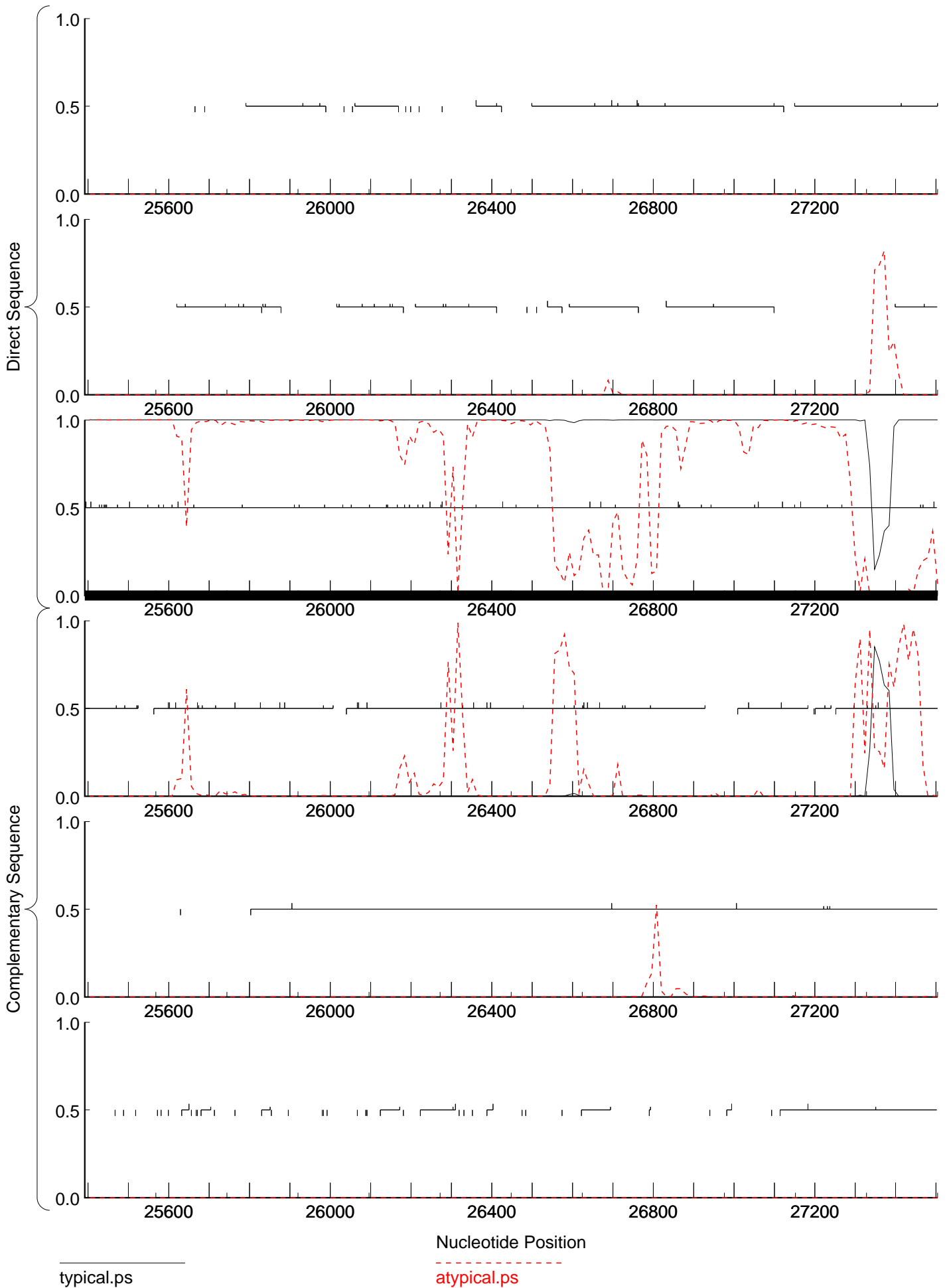






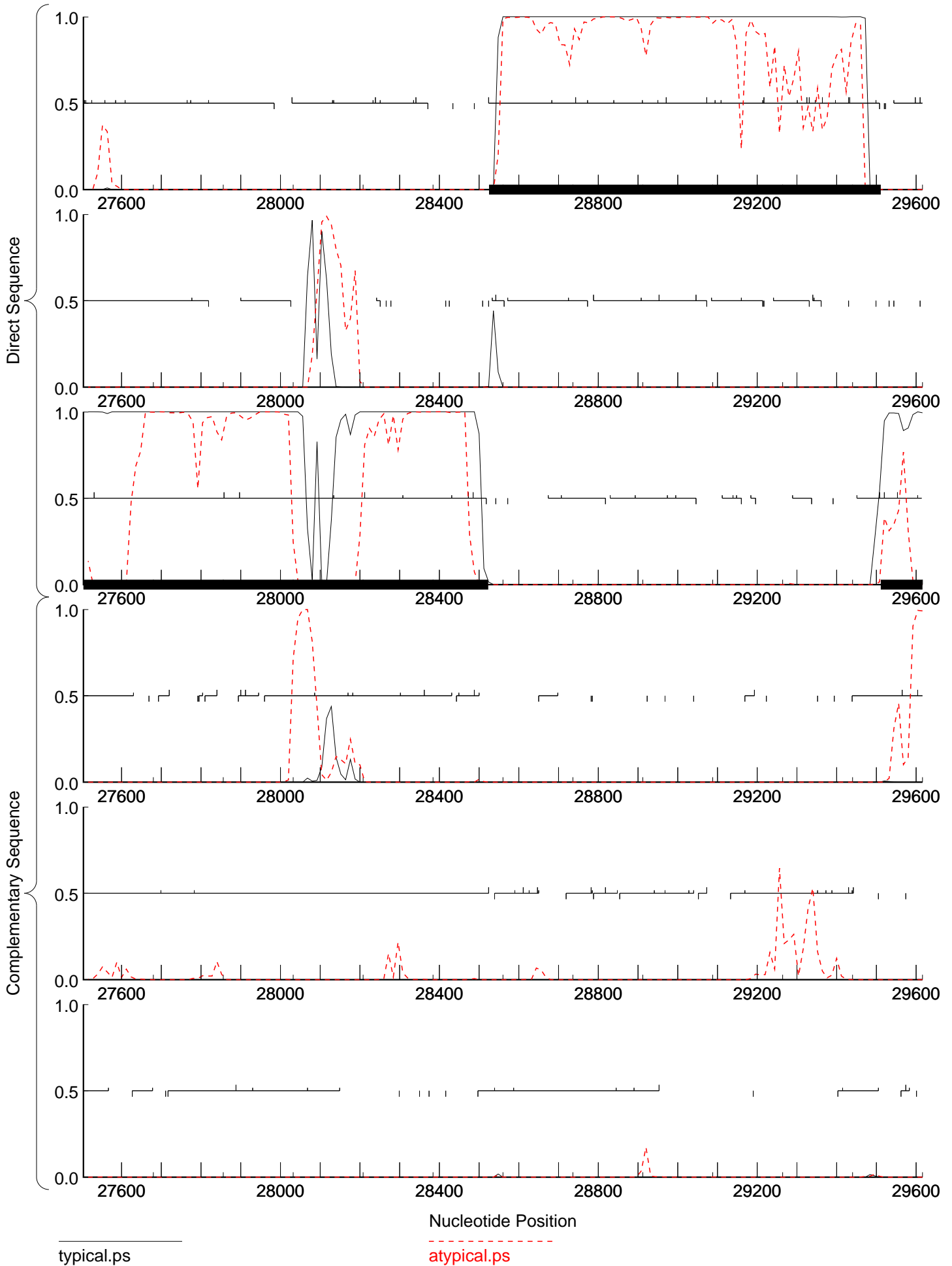


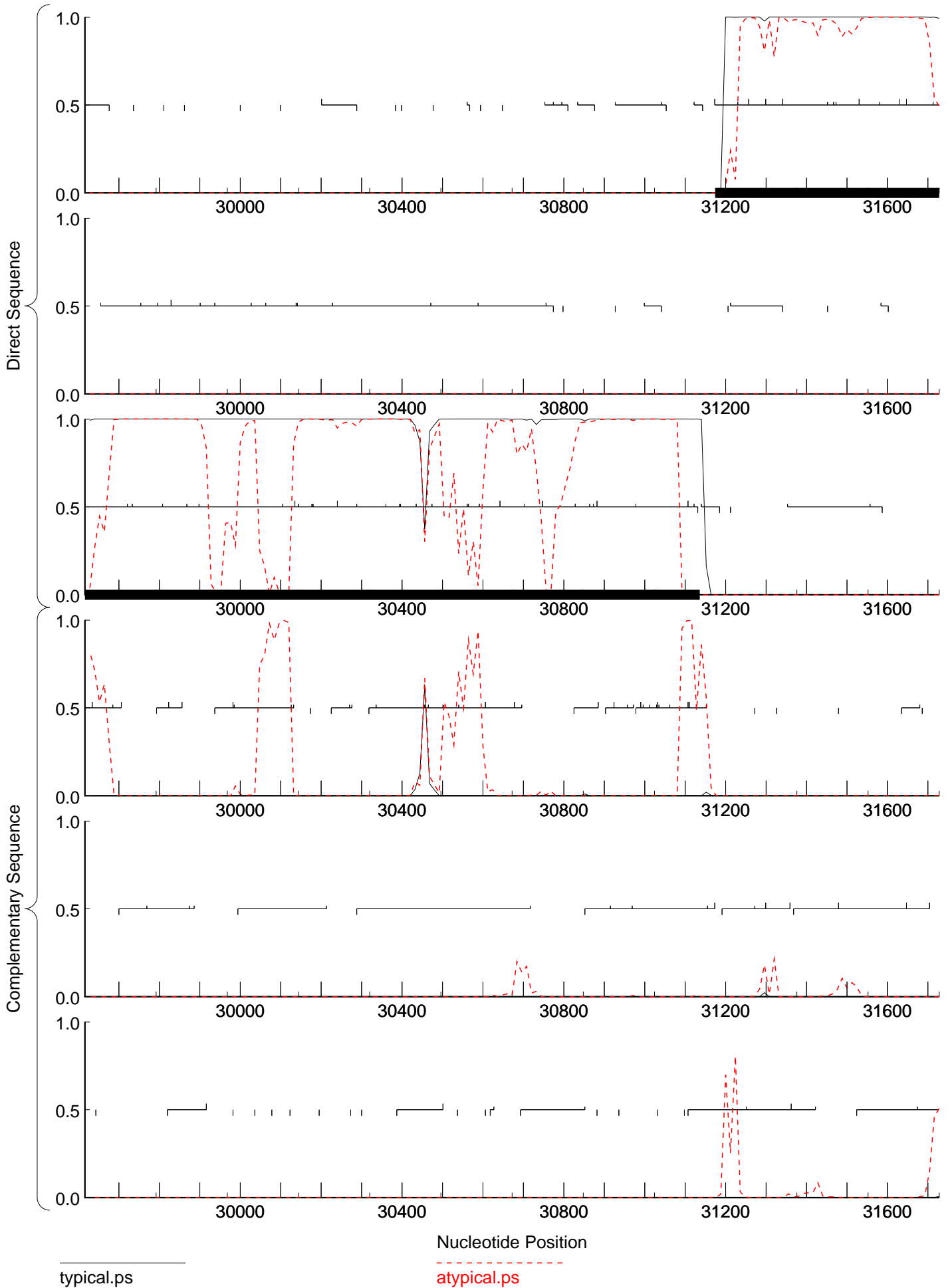




typical.ps

atypical.ps

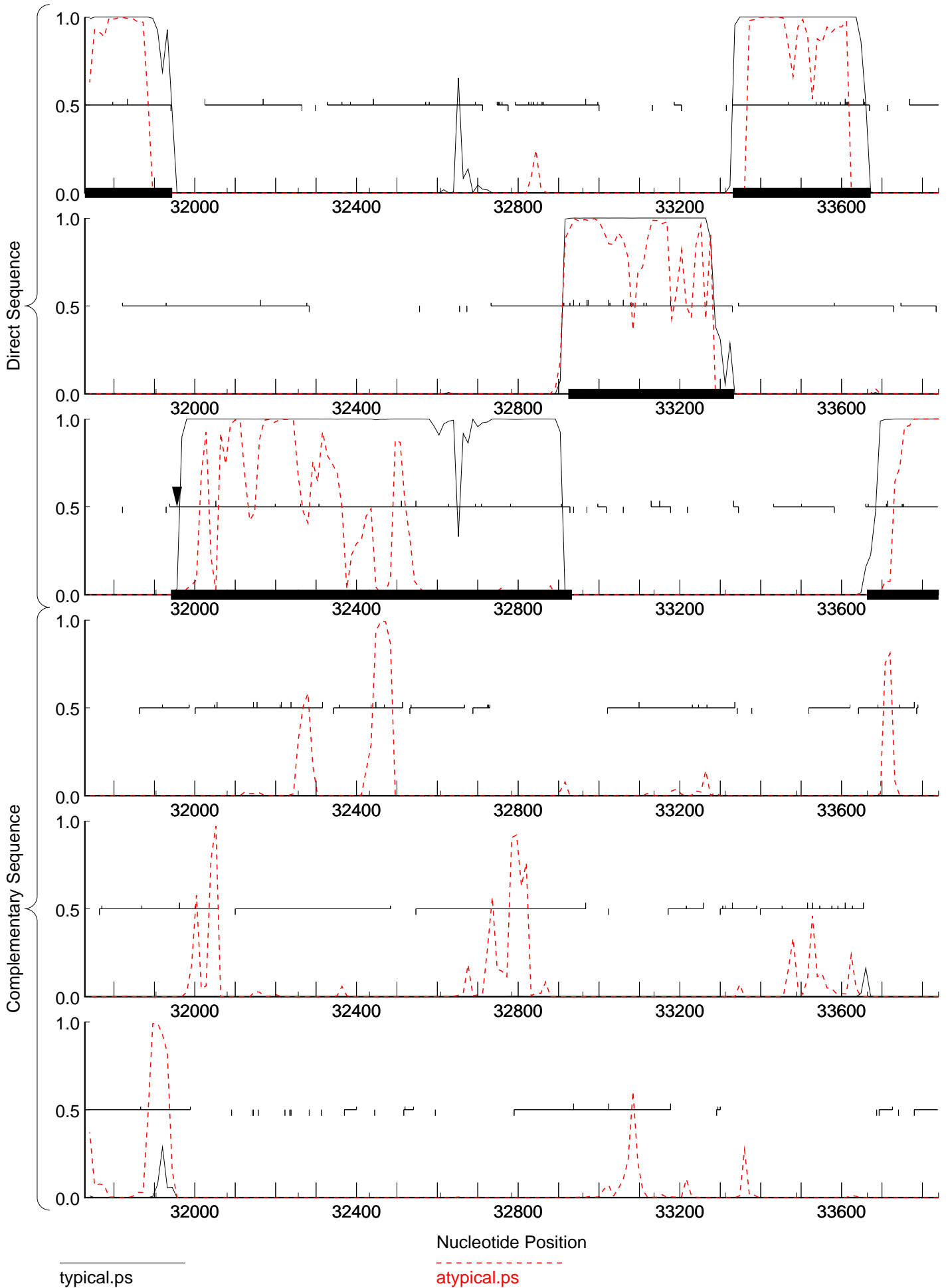


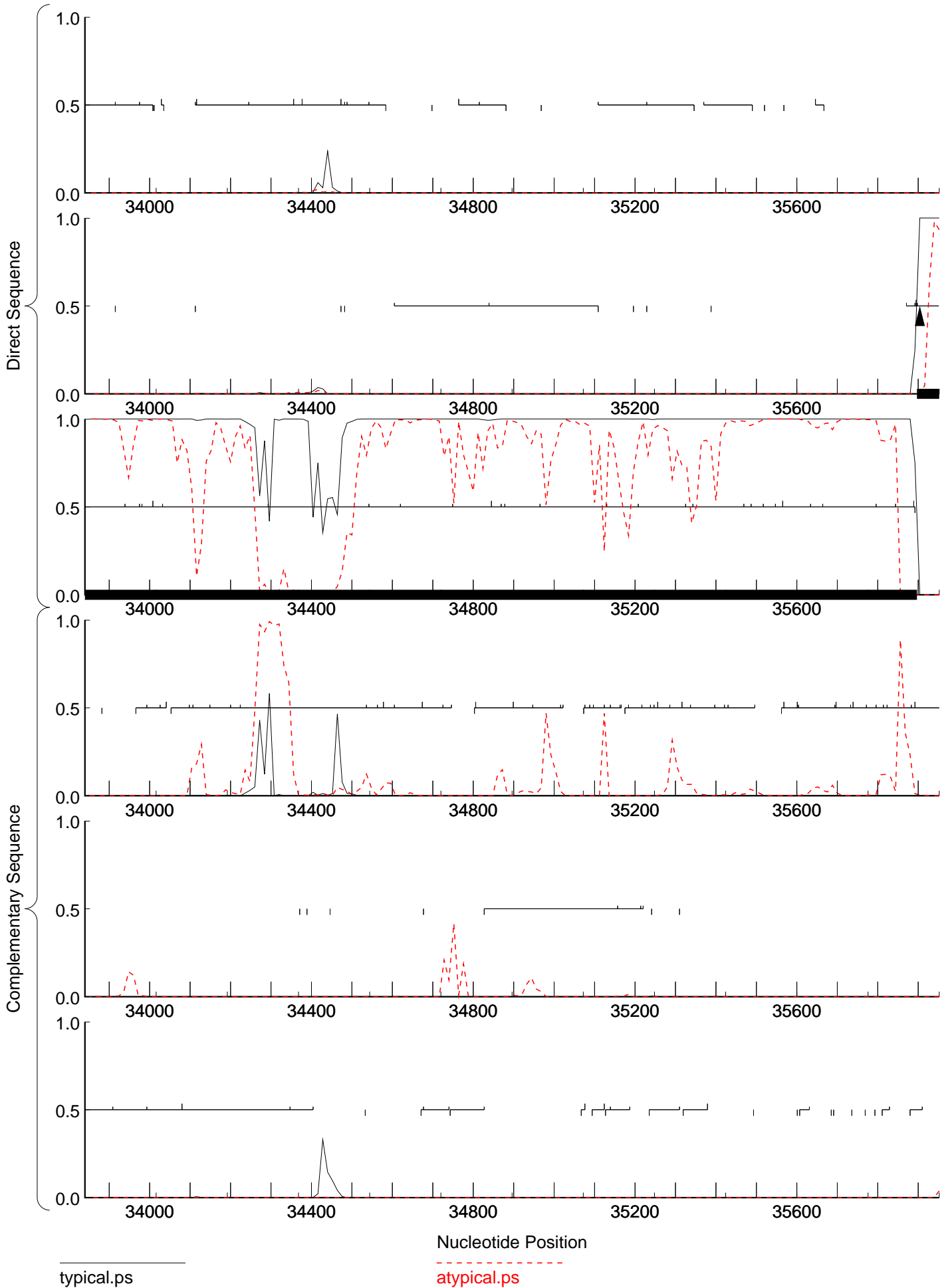


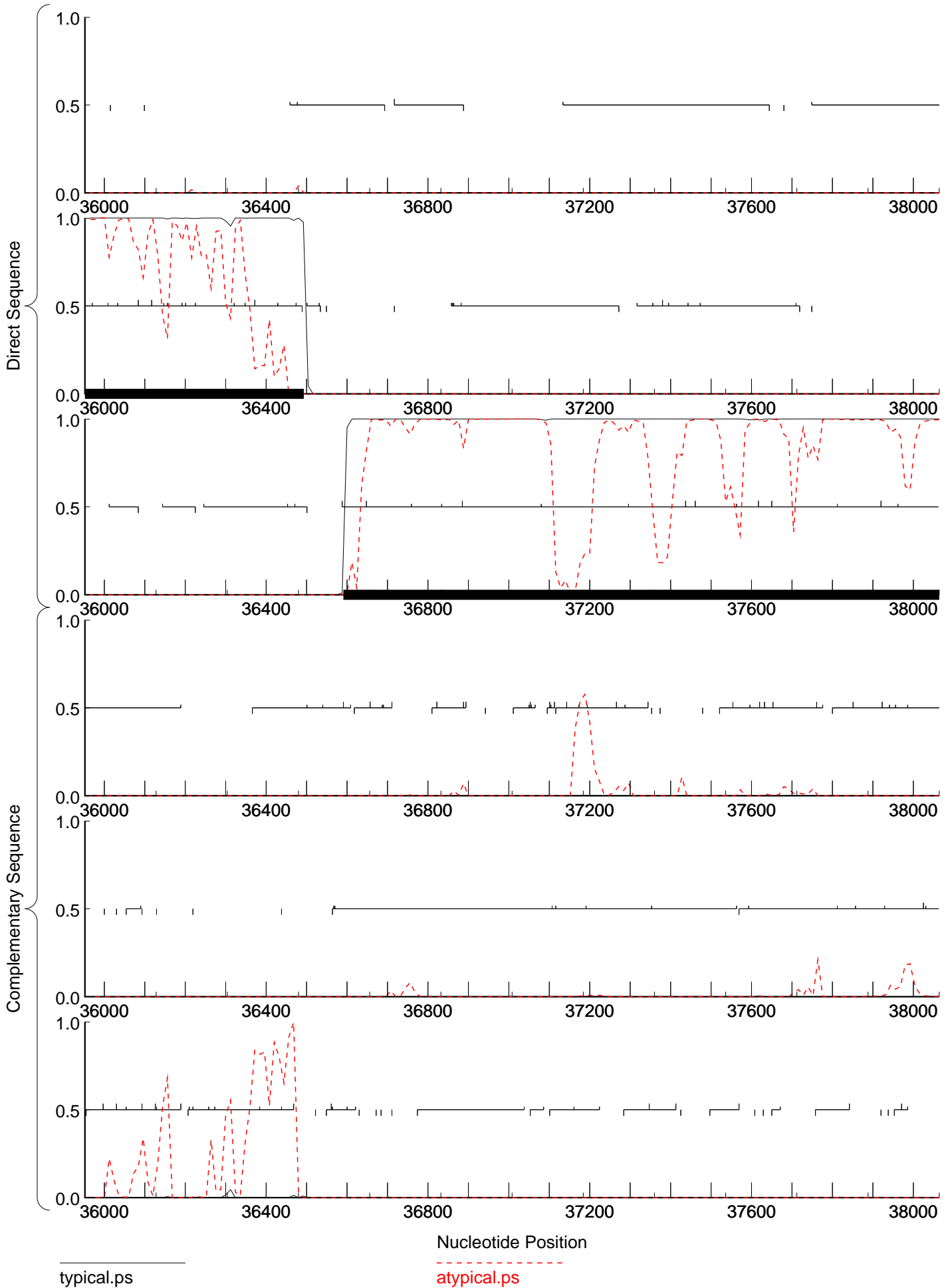
typical.ps

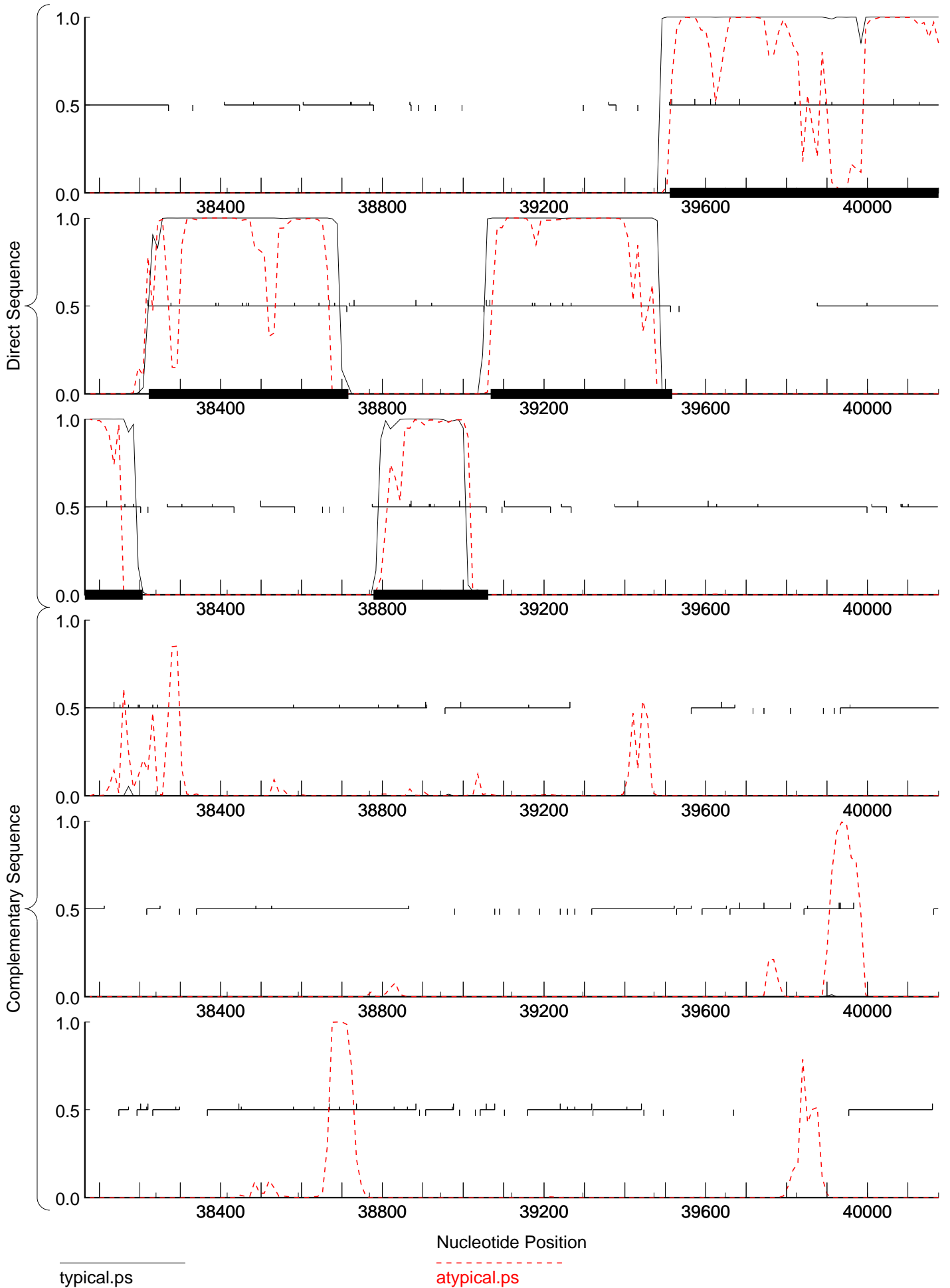
atypical.ps

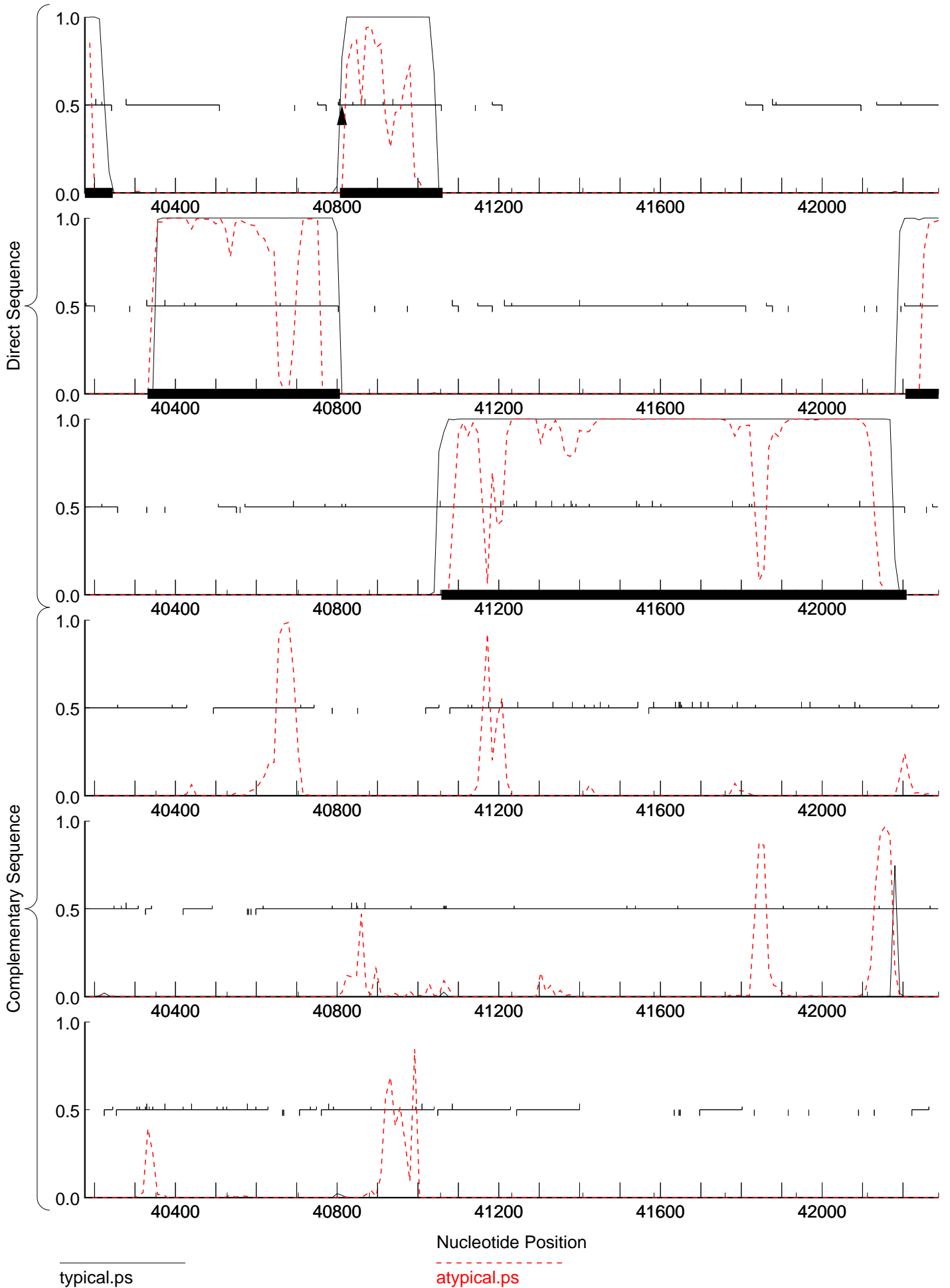


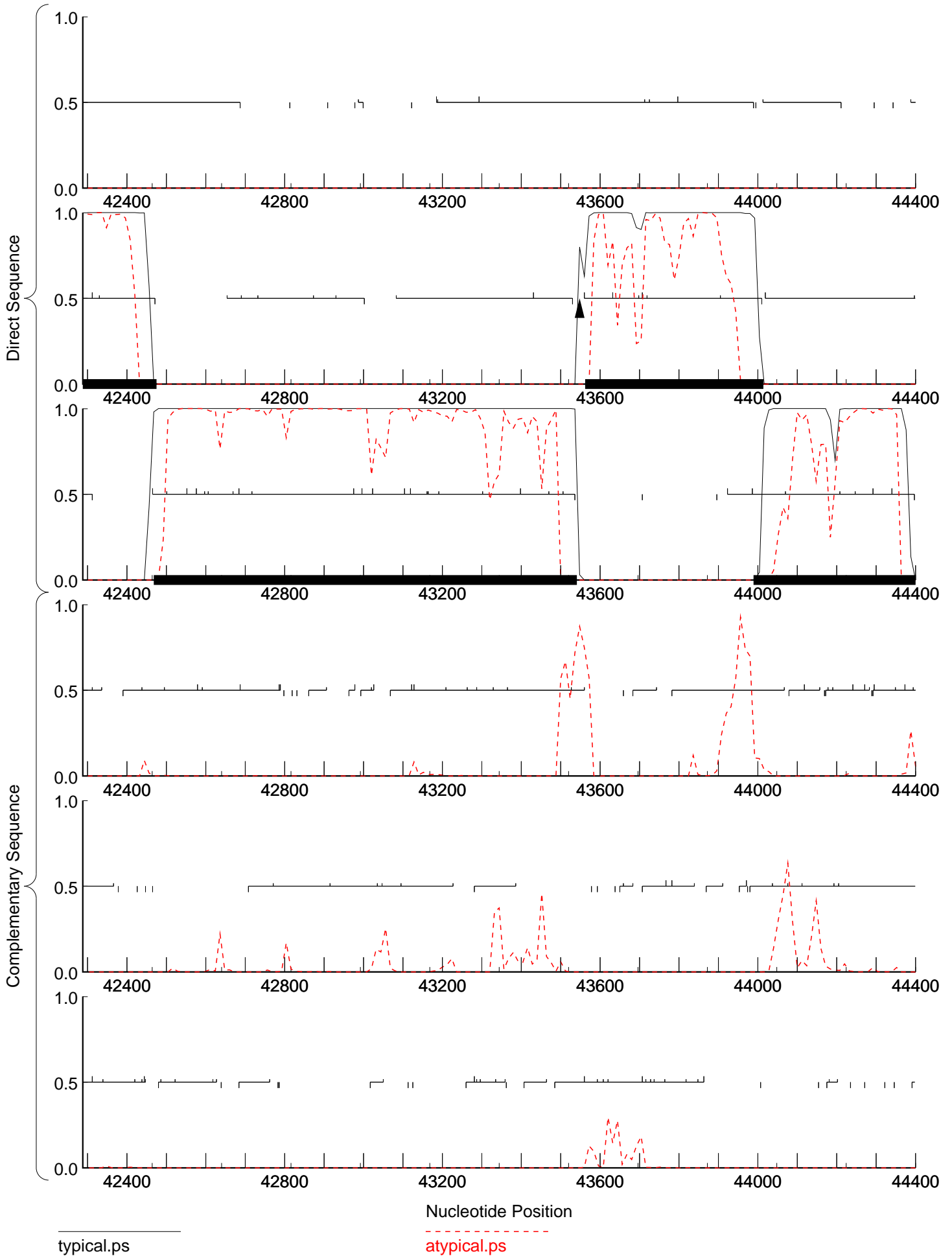


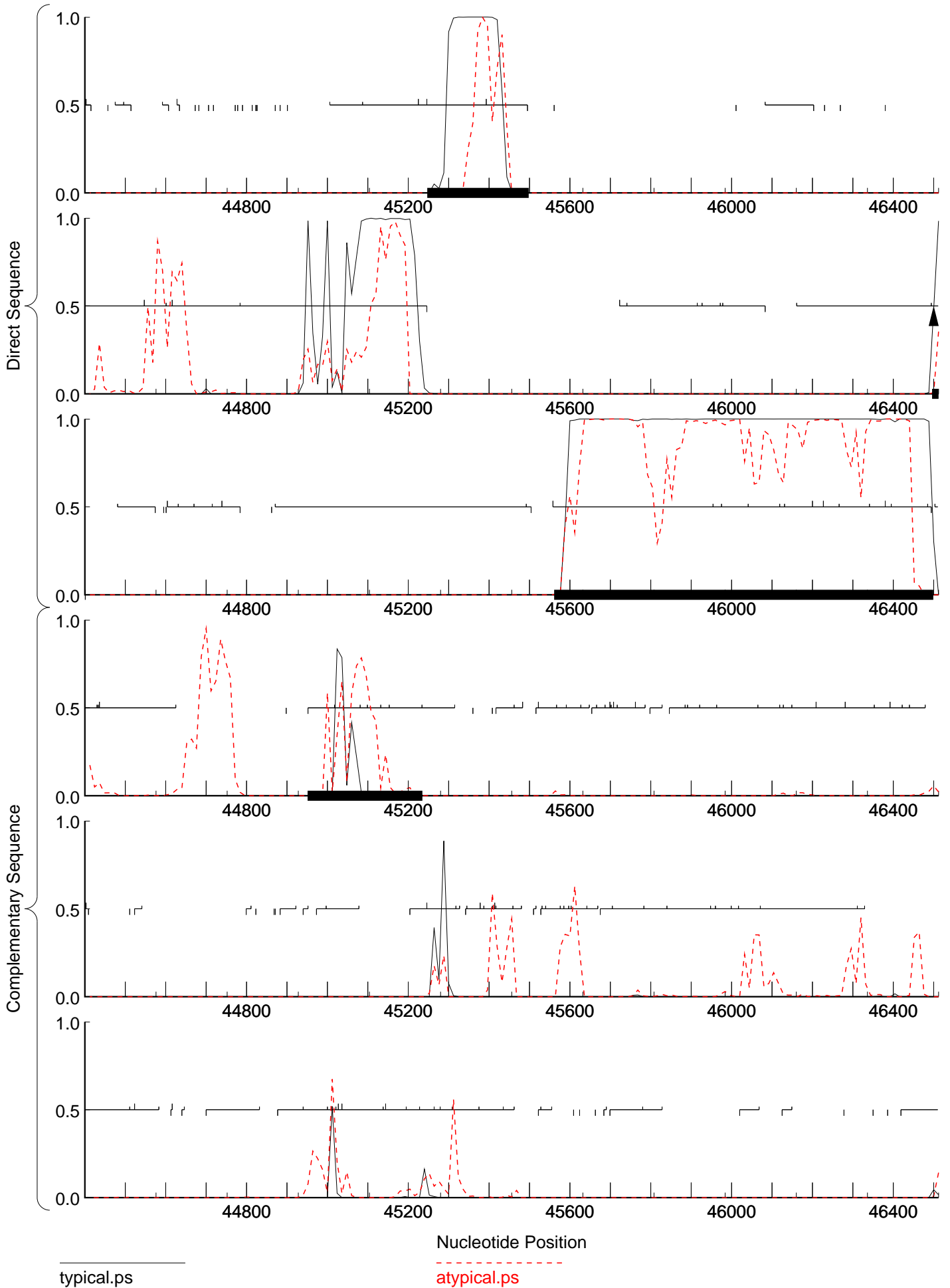


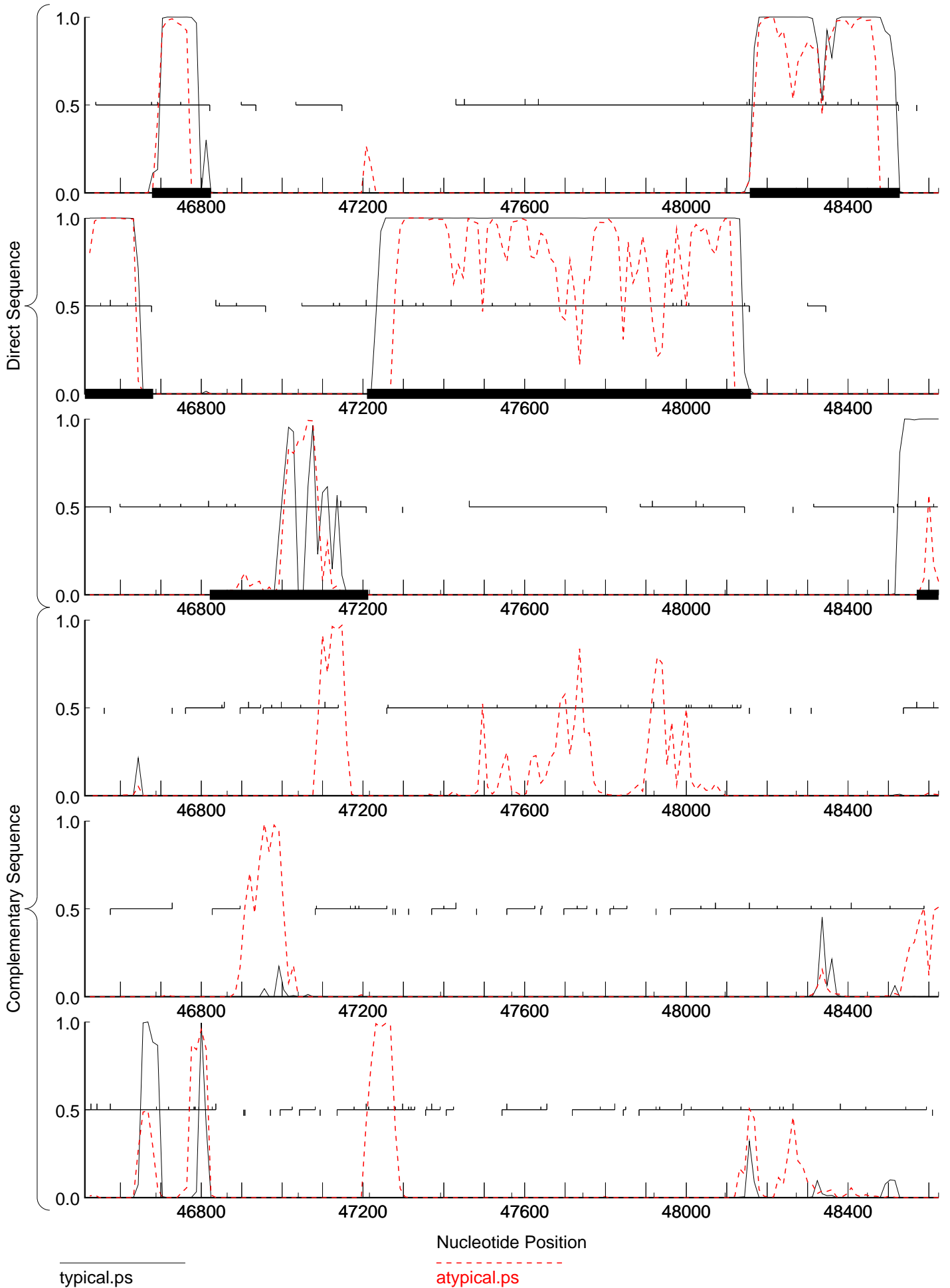




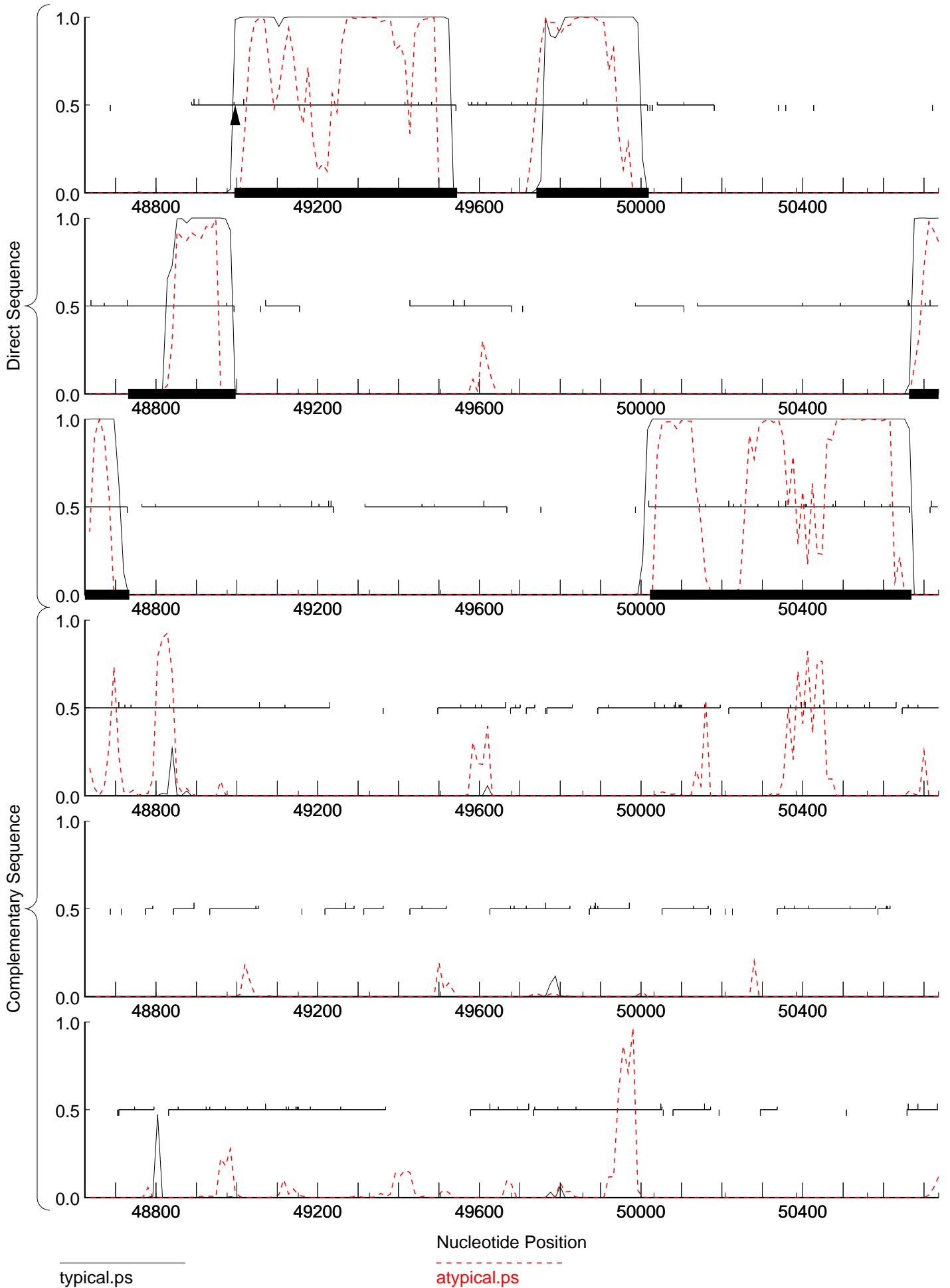


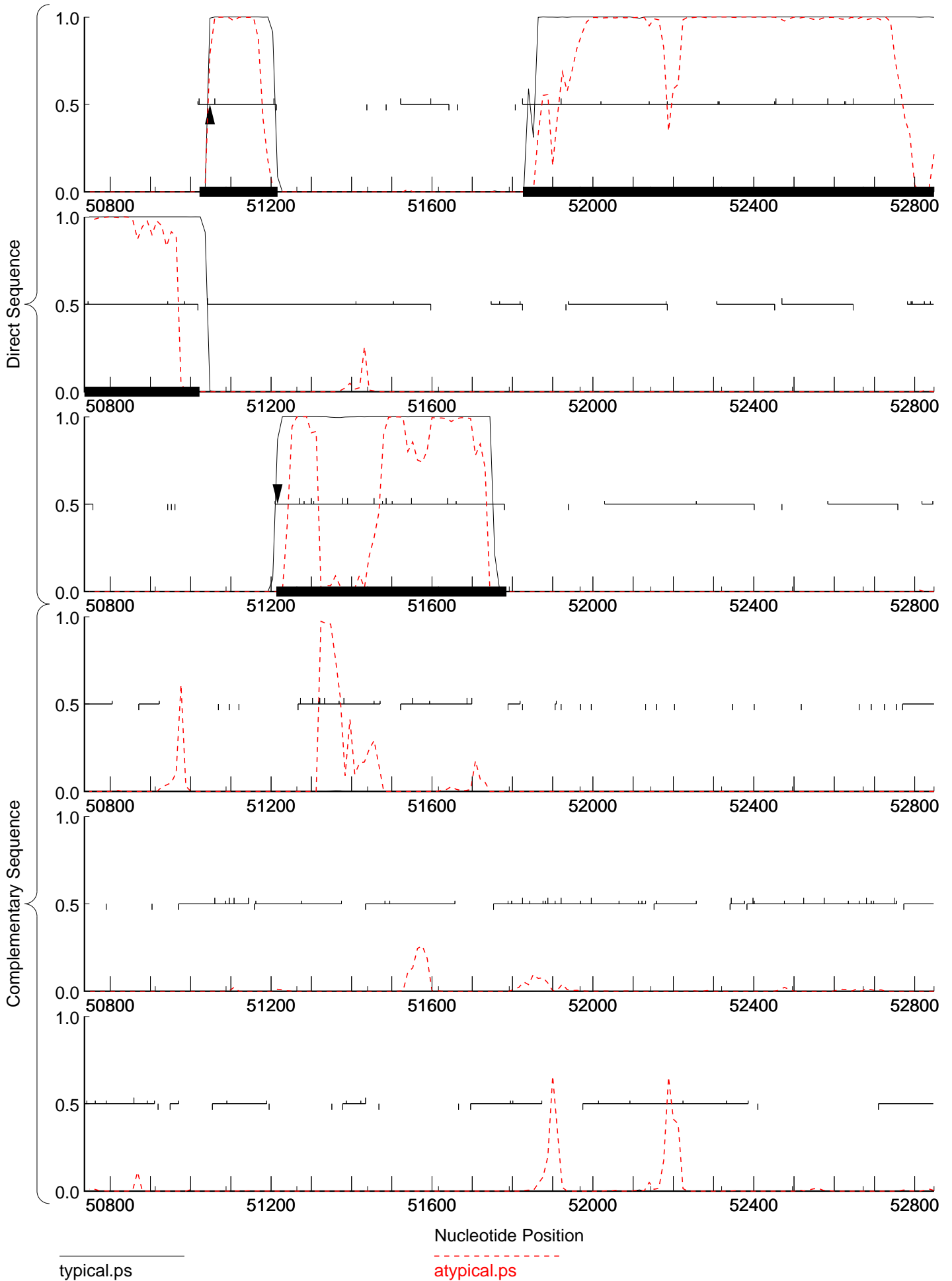


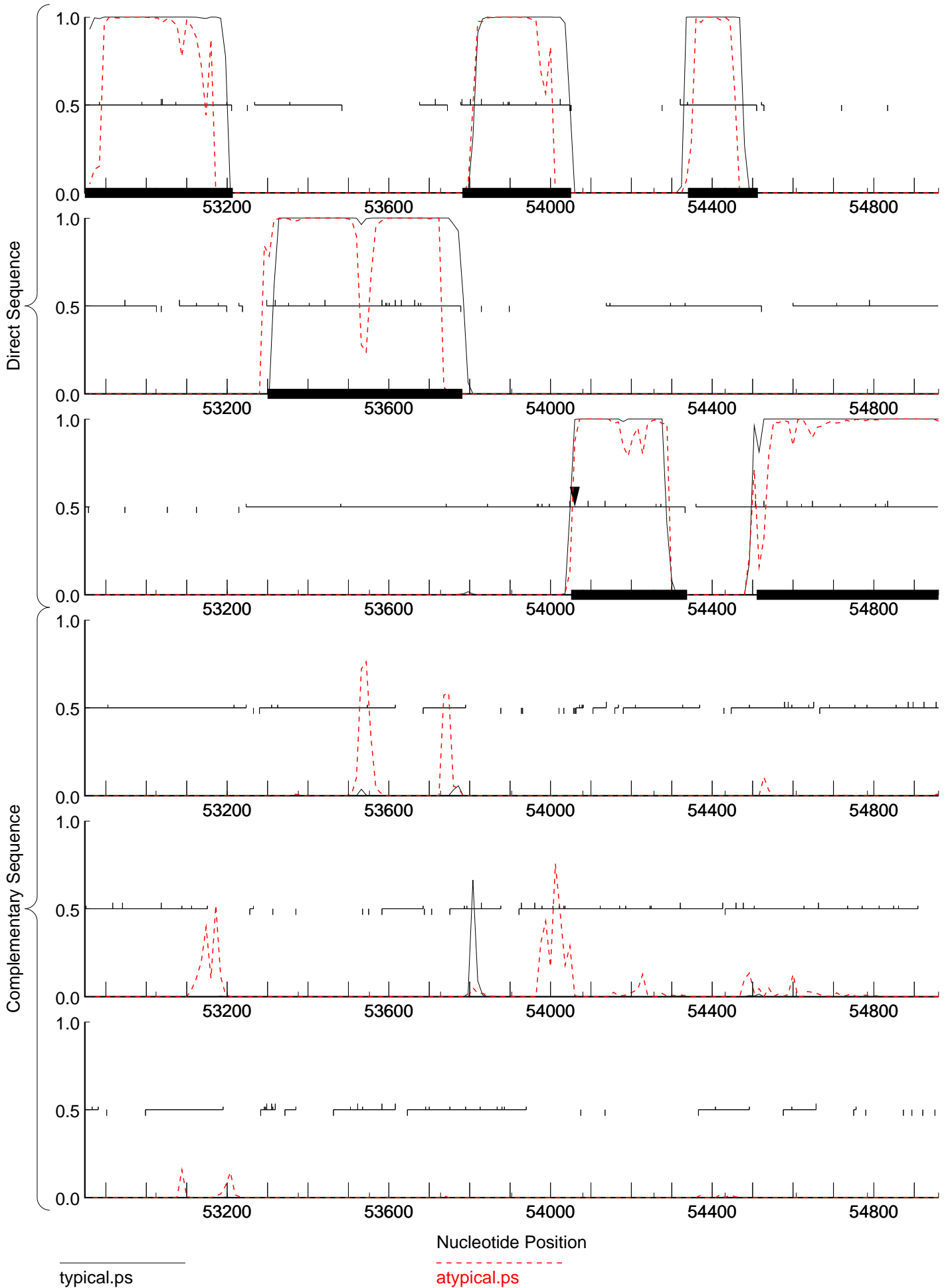












typical.ps

atypical.ps

