

GeneMark

Version 2.5p (09.08.06)

Copyright 1993 - M. Borodovsky, J. McIninch

PROGRAM INFORMATION

Sequence : Mycobacterium phage Prithvi complete sequence, 60311 bp including 11-base 3' overhang (CTCG)
Analysis Date : 6/28/17 at 13:28:12
Pages : 30
Sequence Length : 60311 bp
GC Content : 66.77%

Window Length : 96 bp
Window Step : 12 bp
Threshold Value : 0.500

PS-Version : 1.2

GeneMark Options : PostScript graph,
Mark ORFs / splice sites,
List ORFs,
List regions and/or splice sites,

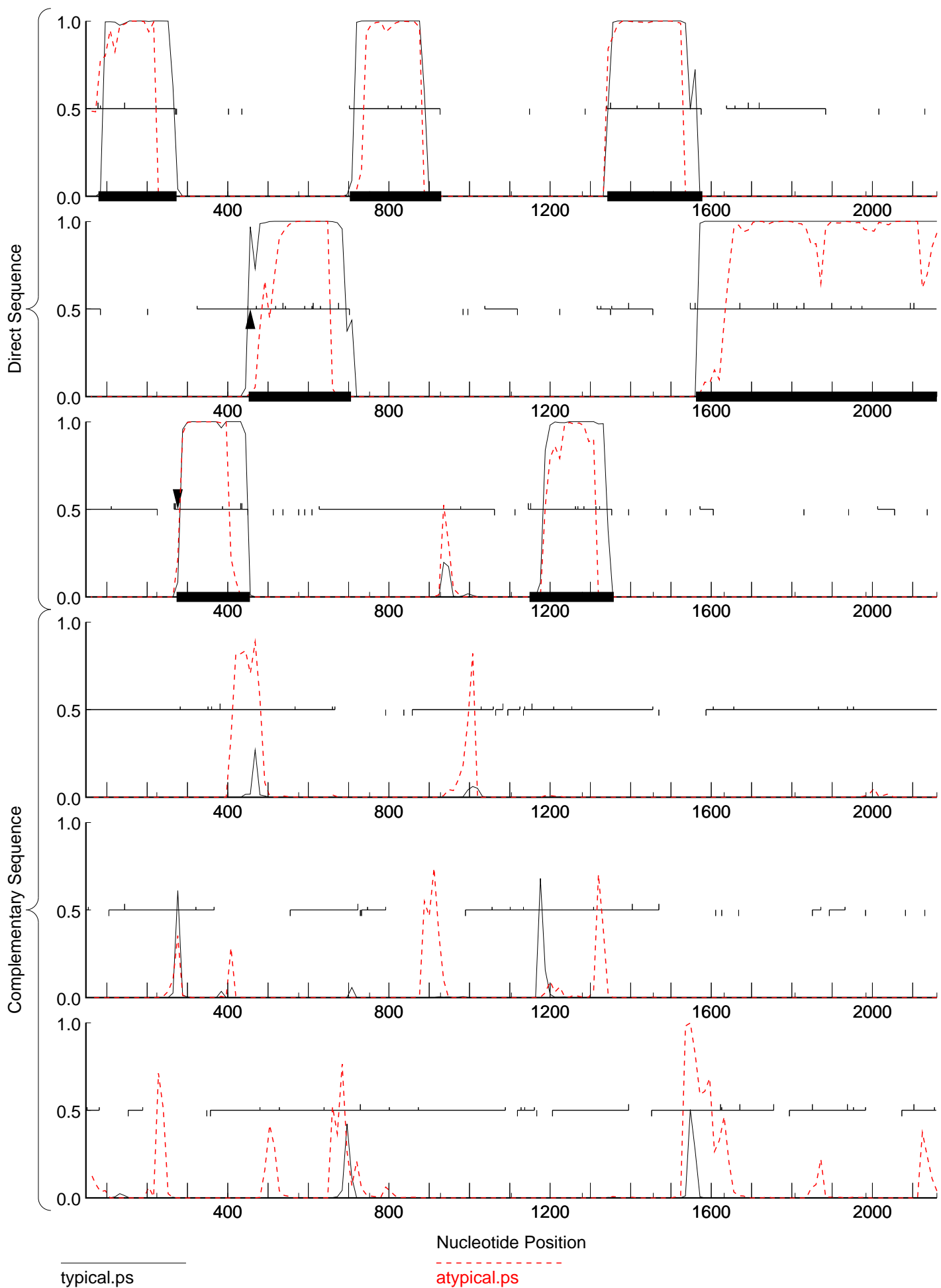
MATRIX INFORMATION

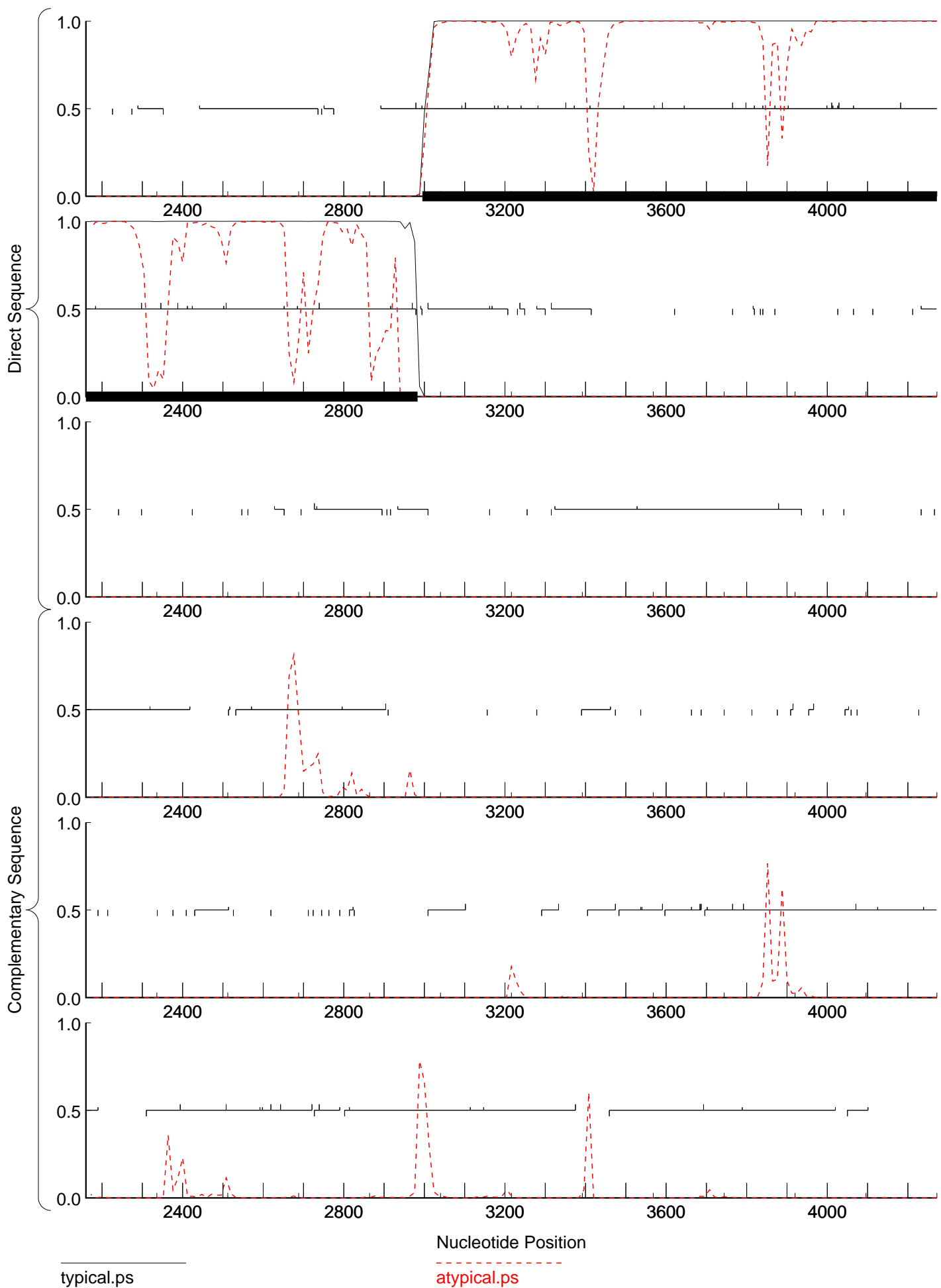
Matrix : -
Author : -
Order : 4

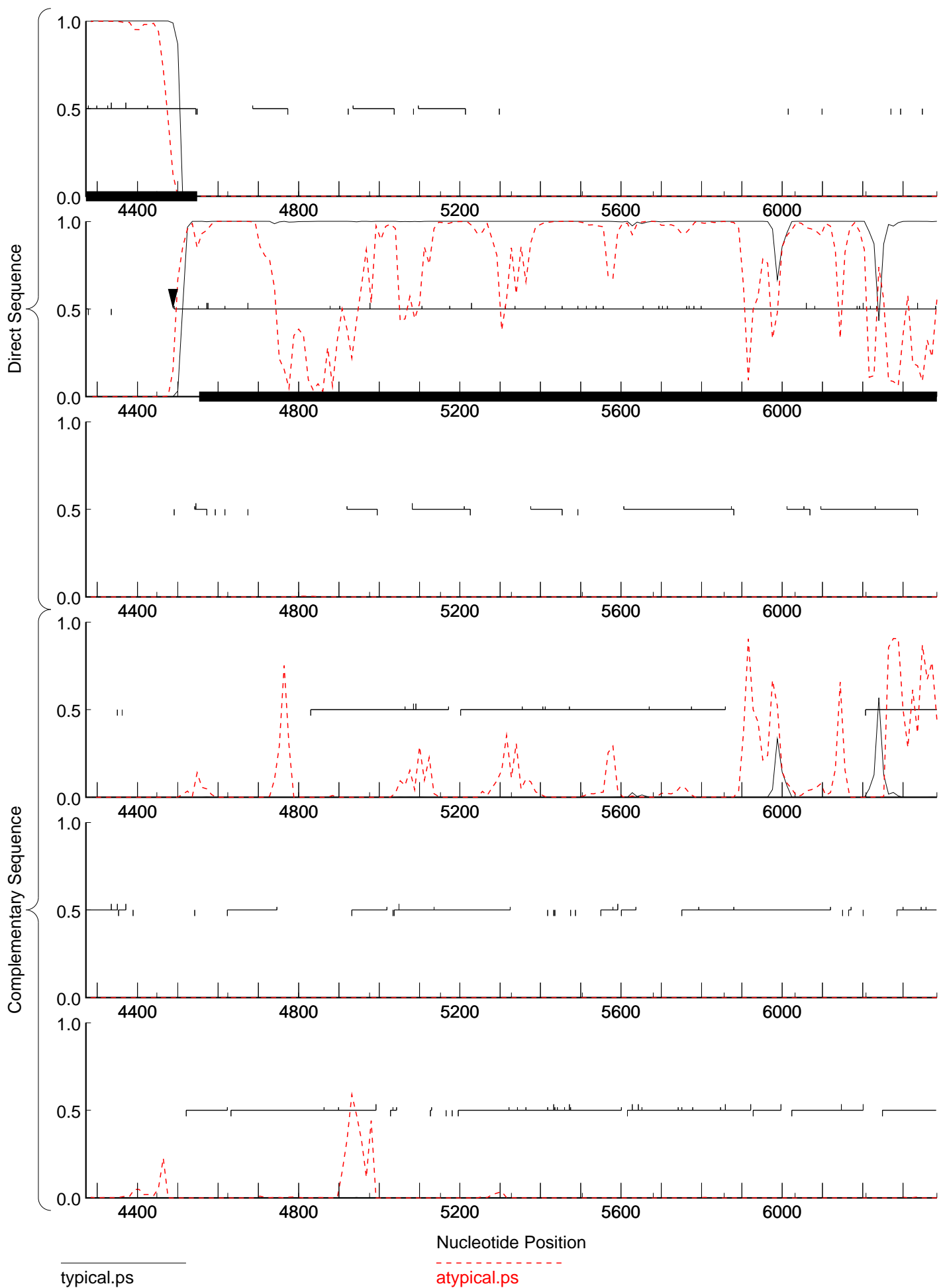
Send questions / comments to:
Dr. M. Borodovsky
Georgia Institute of Technology
School of Biology
Atlanta, GA 30332-0230

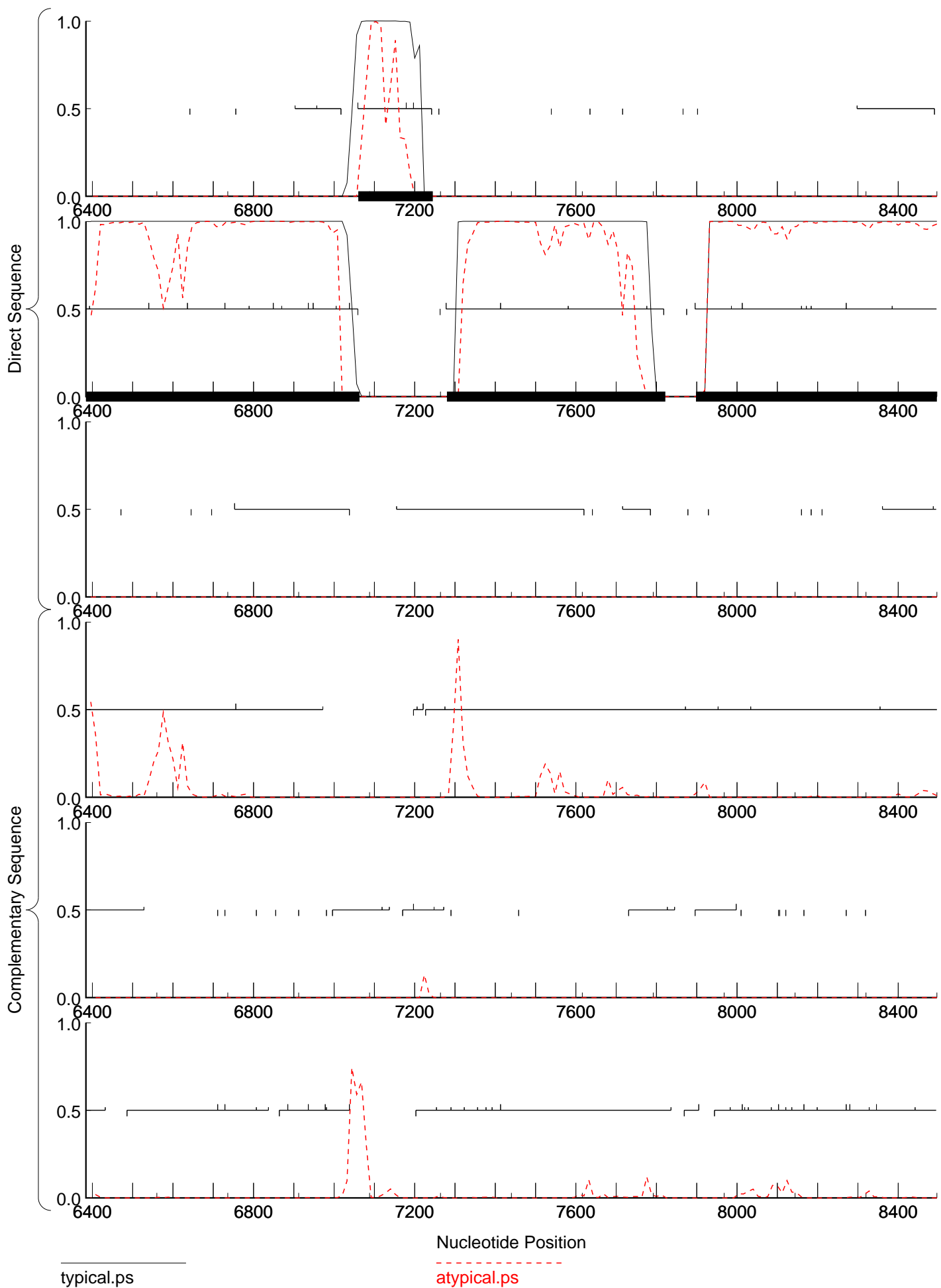
Matrix notes & comments

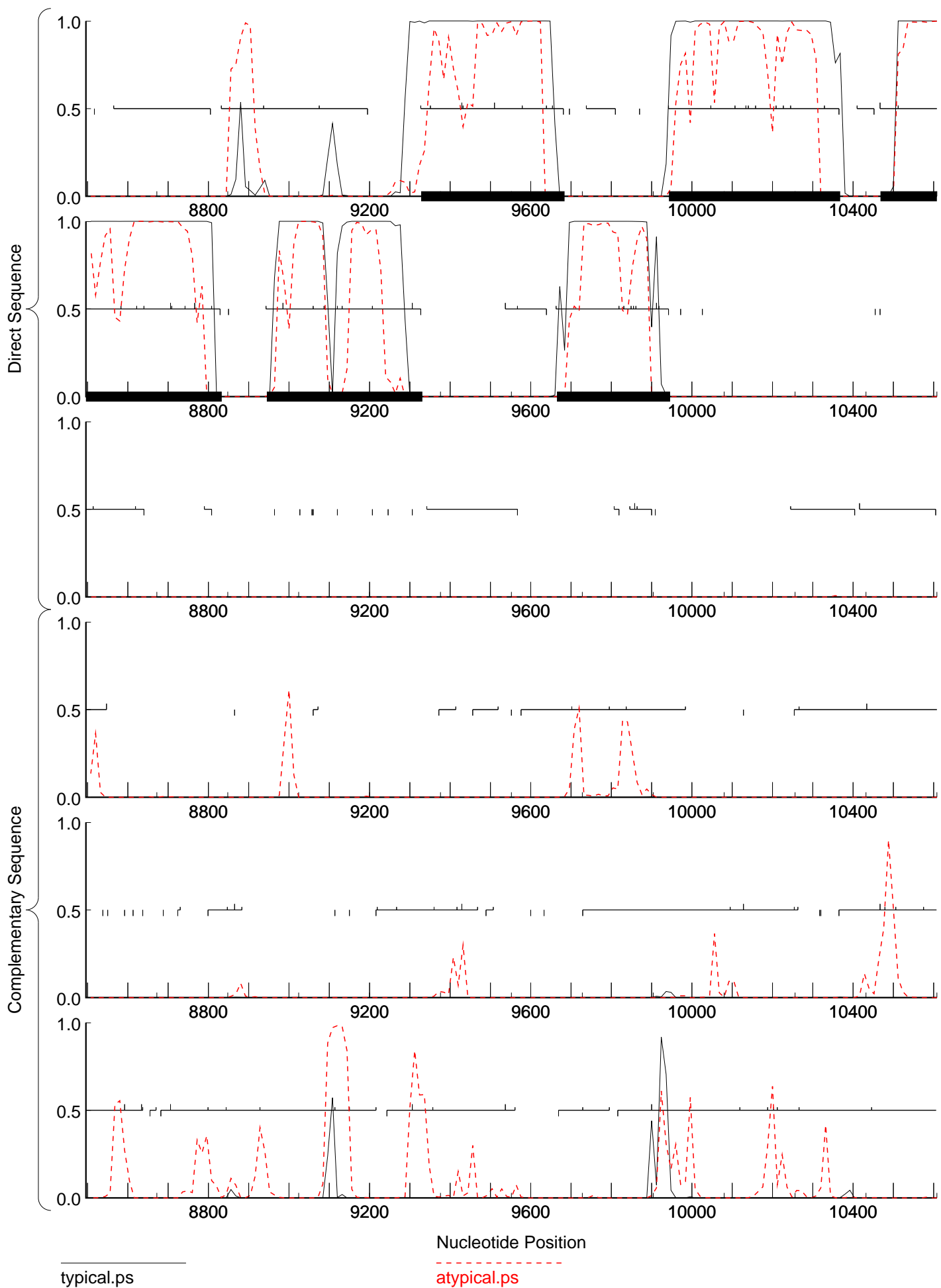
Training set derived by GeneMarkS, 4.30 October 2014
Wed Jun 28 13:28:12 2017

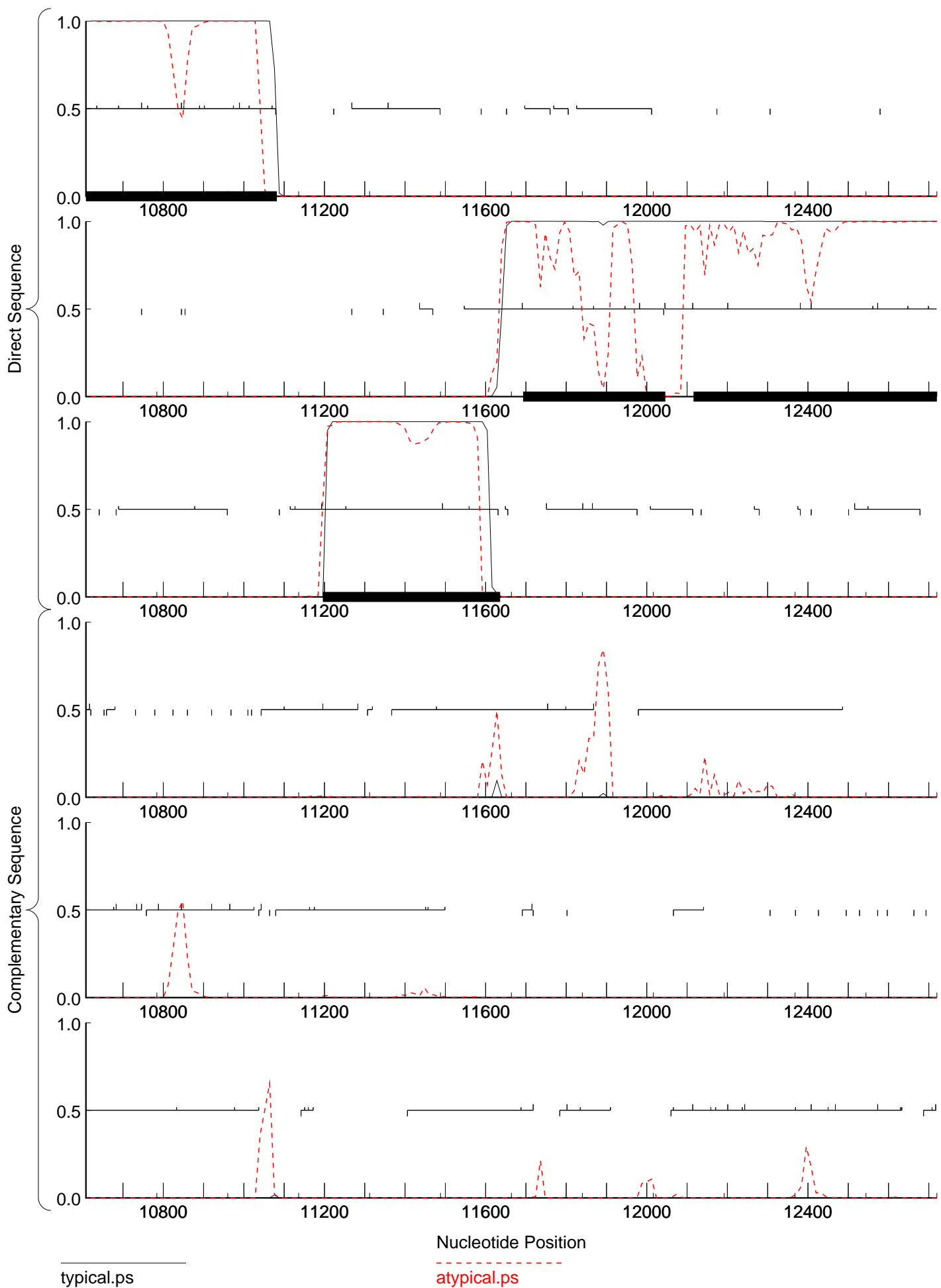






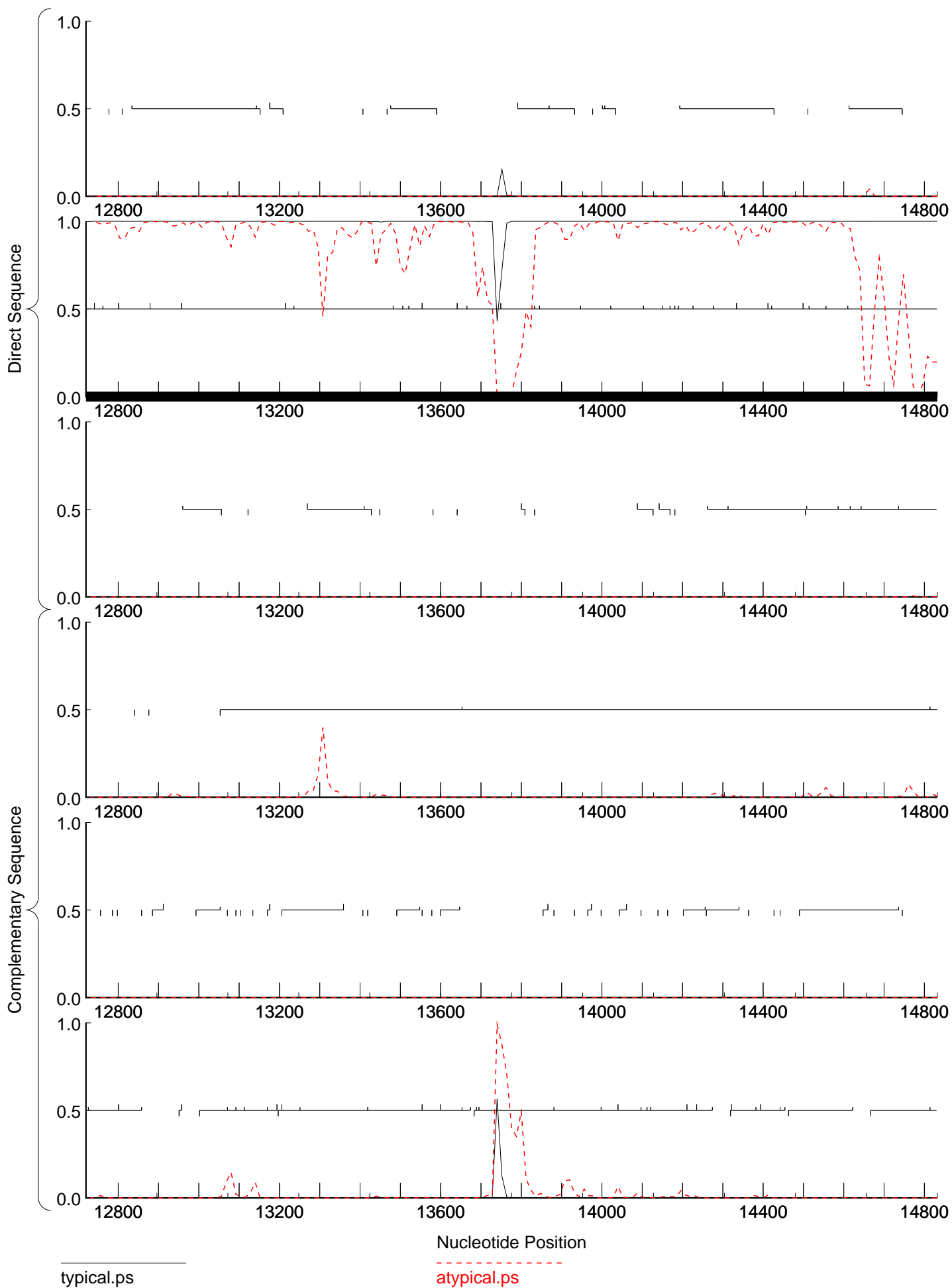






typical.ps

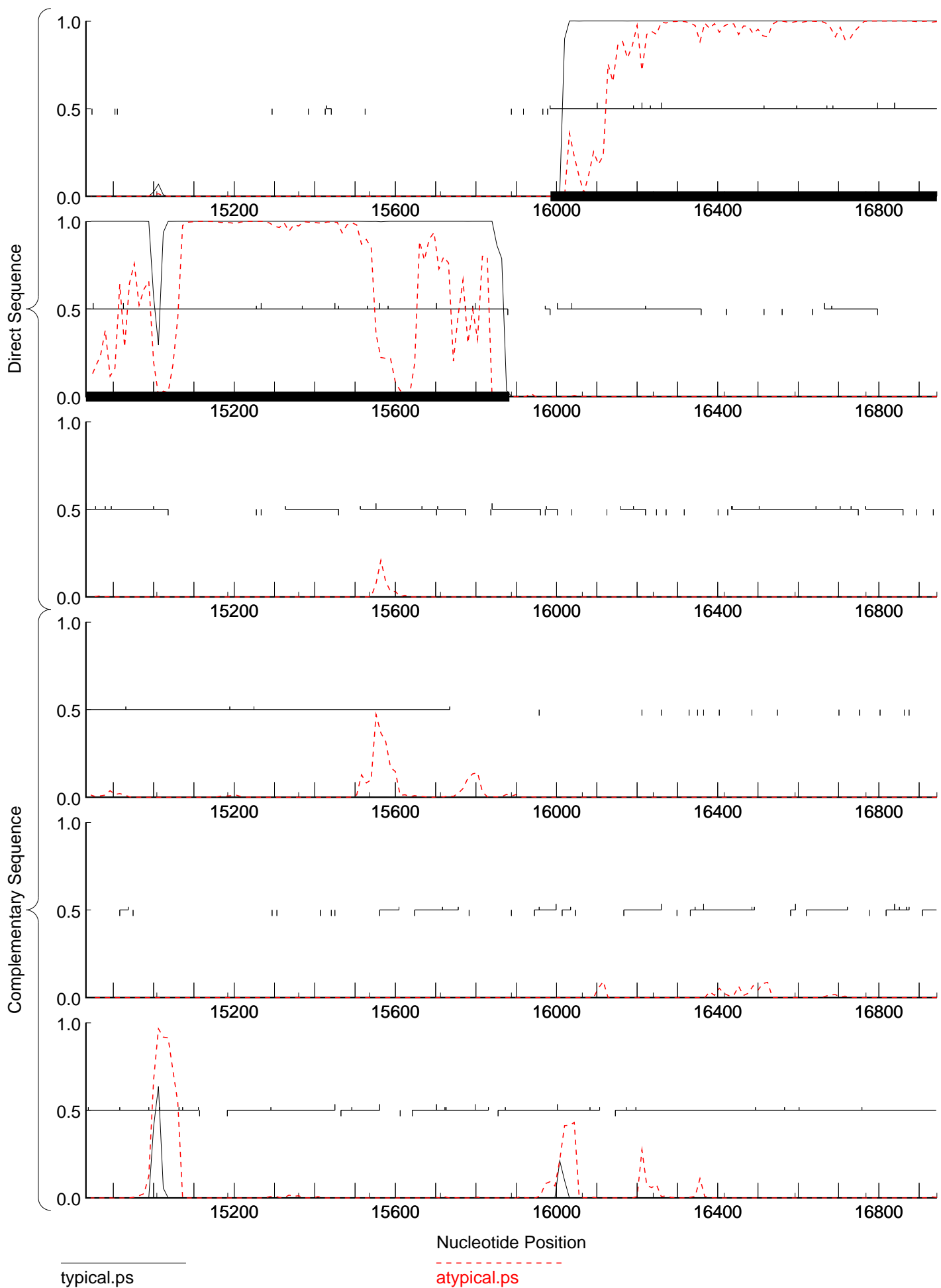
atypical.ps



typical.ps

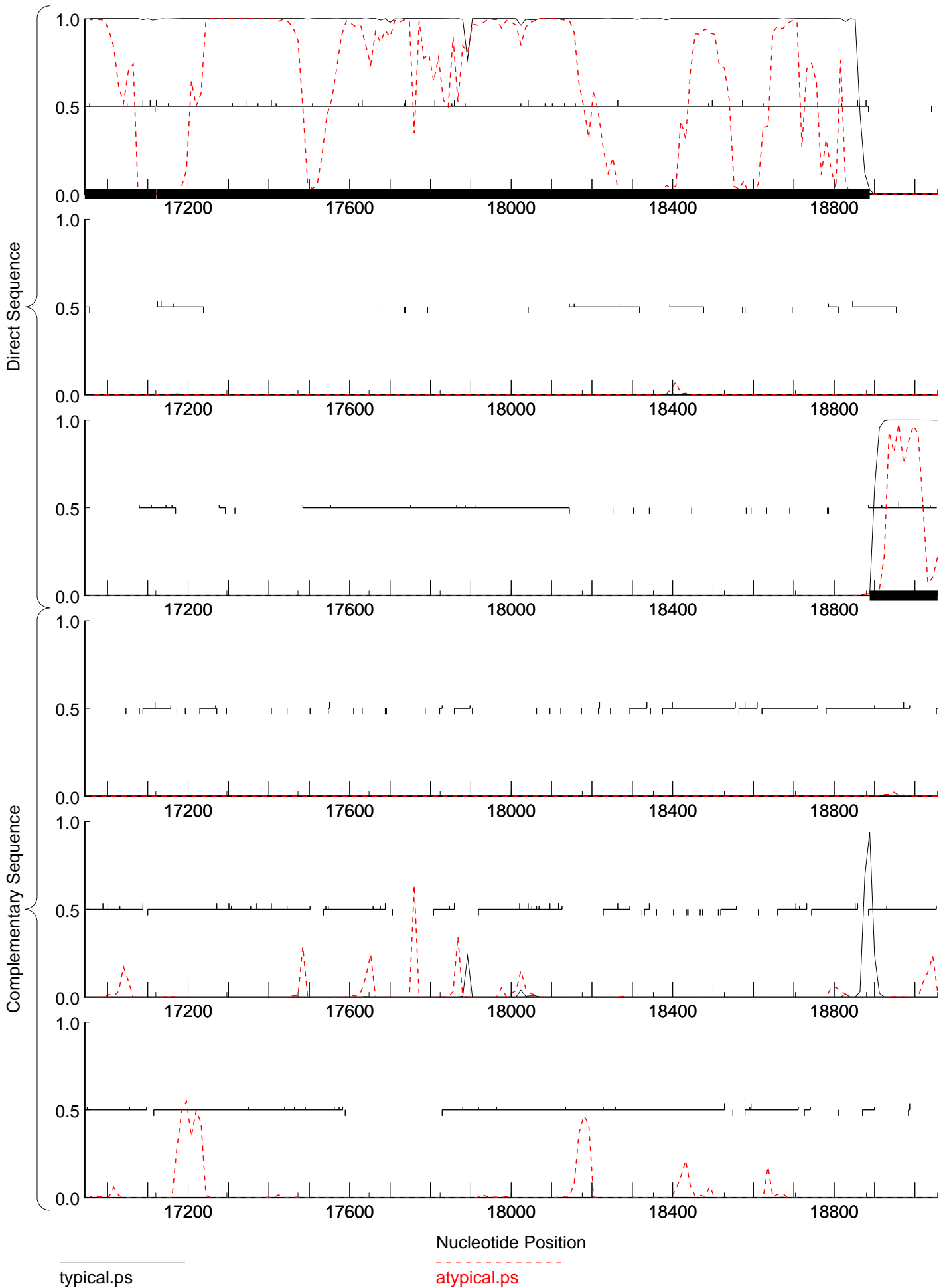
atypical.ps

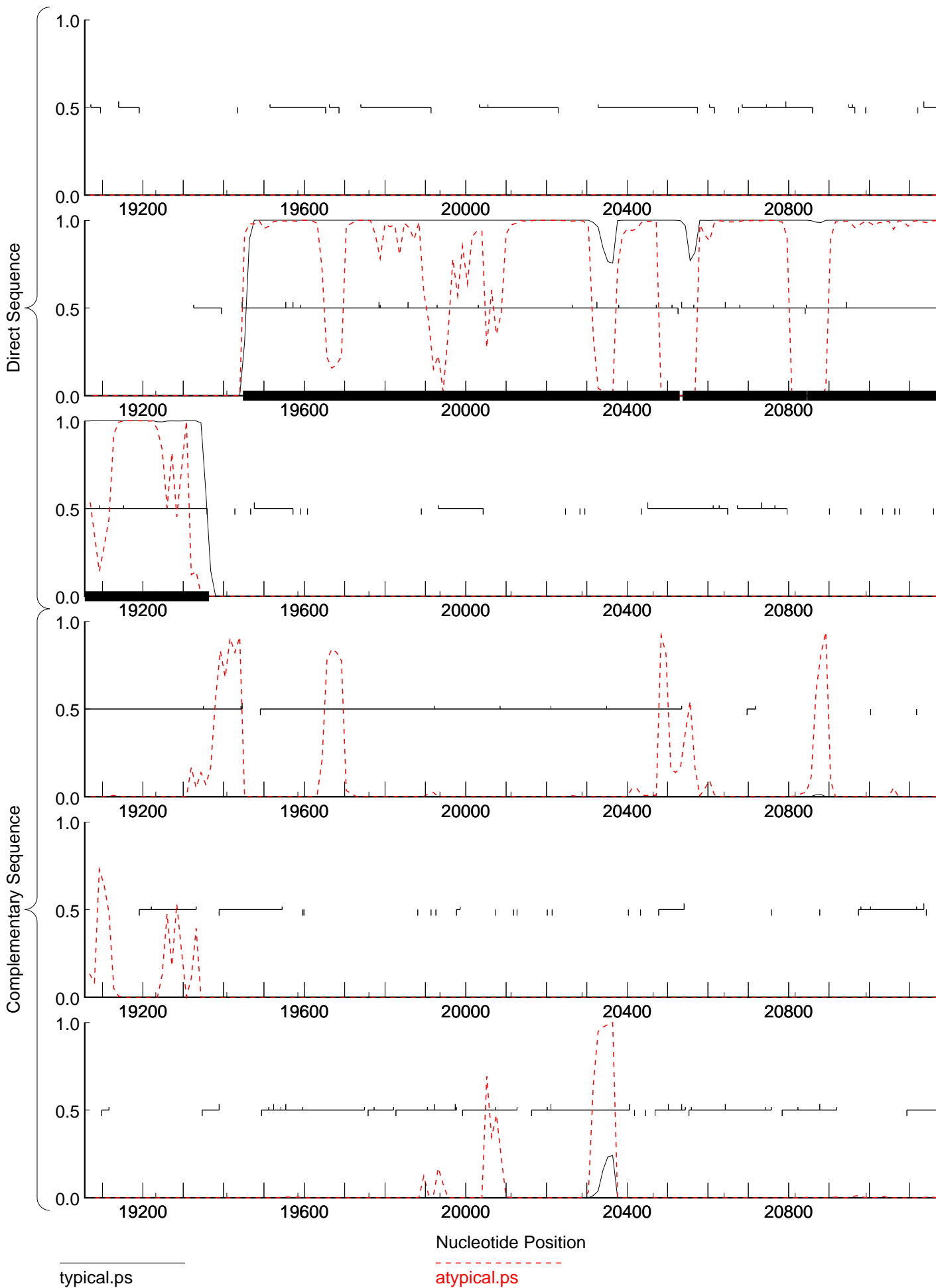
complete sequence, 60311 bp including 11-base 3' overhang (CTCGTAGGCAT), Cluster K1, Order 4, Window 96, Step 12, 9/30
complete sequence, 60311 bp including 11-base 3' overhang (CTCGTAGGCAT), Cluster K1, Order 2, Window 96, Step 12, 9/30

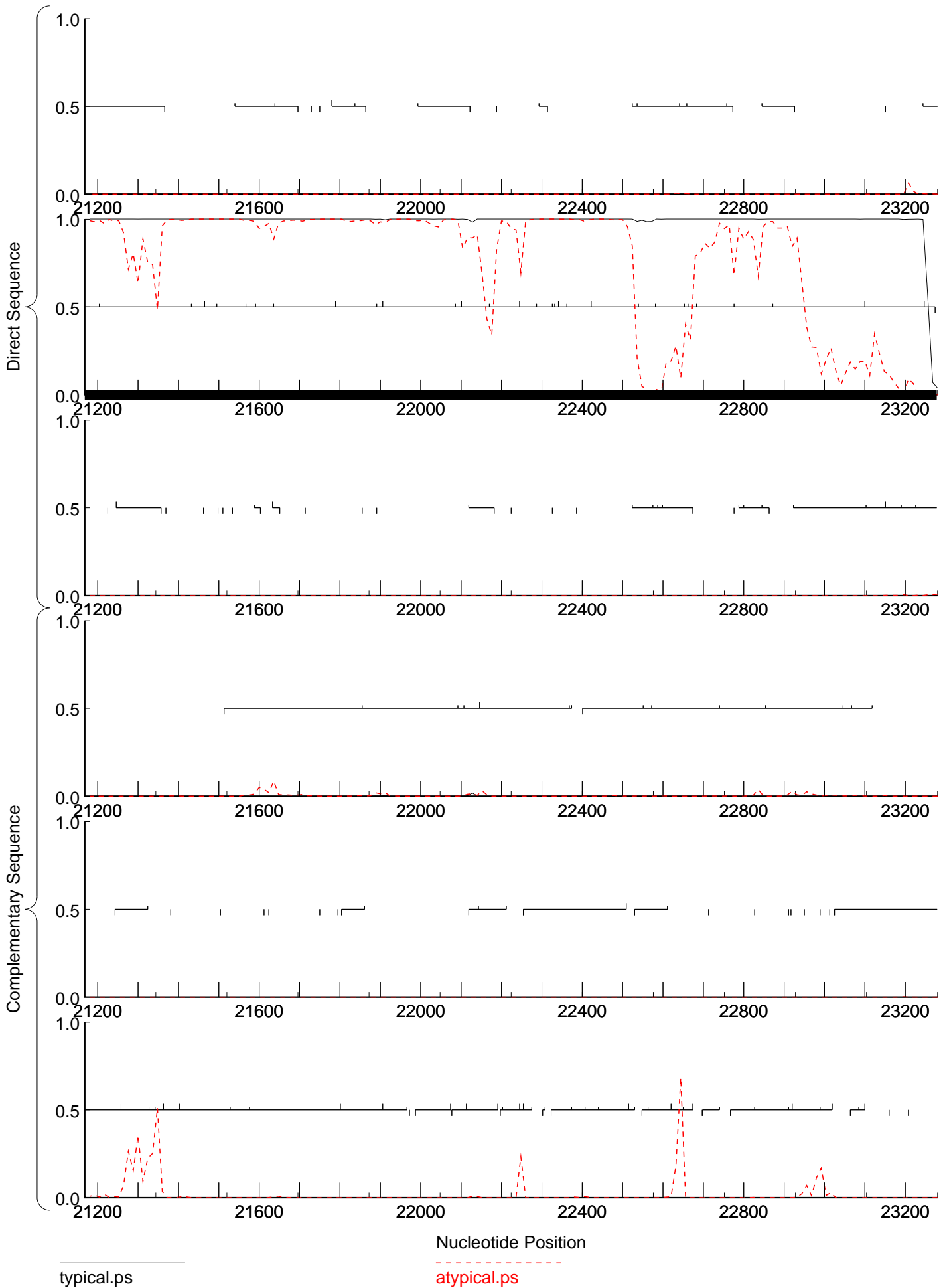


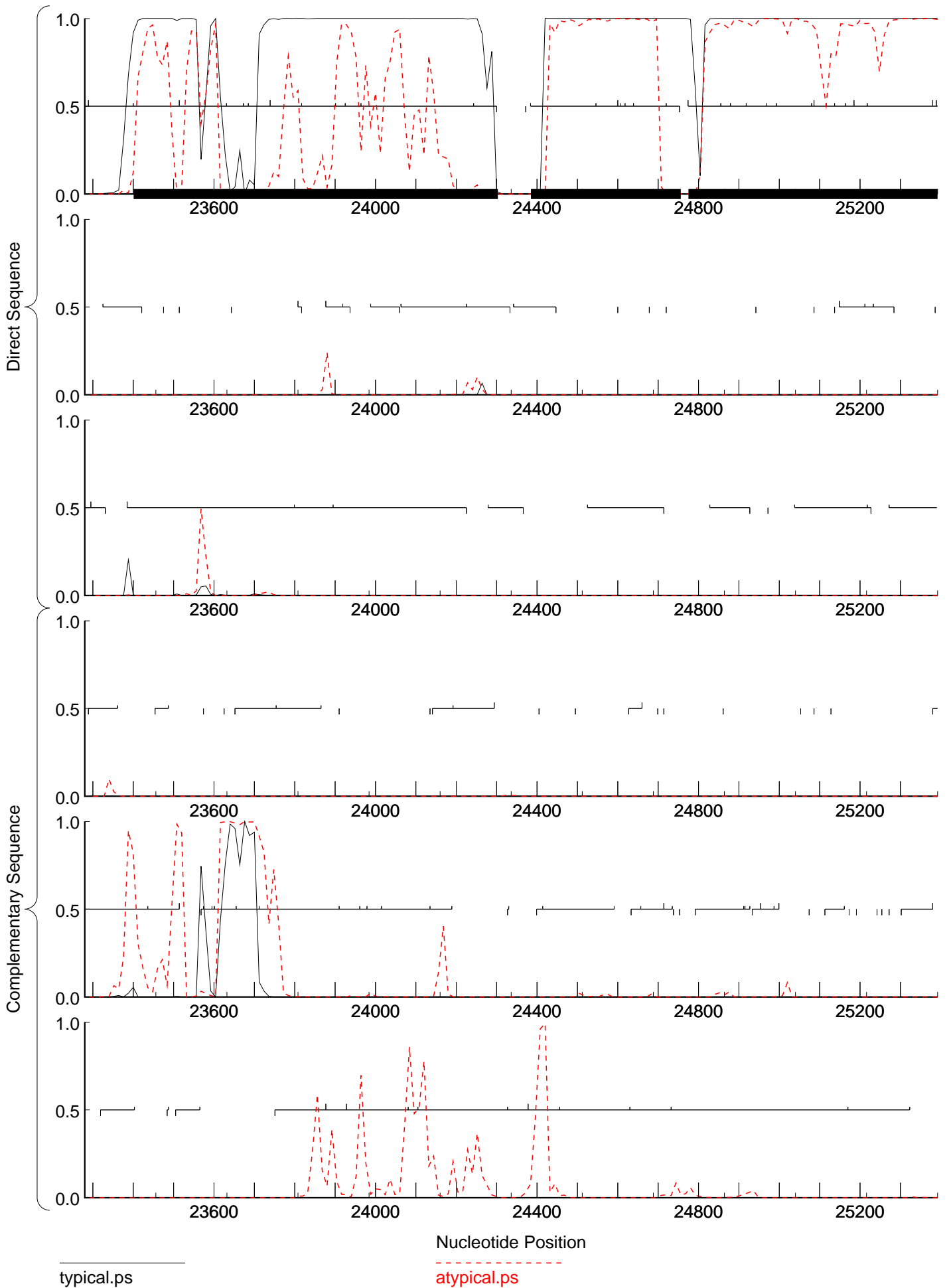
typical.ps

atypical.ps









typical.ps

atypical.ps

