

GeneMark

Version 2.5p (09.08.06)

Copyright 1993 - M. Borodovsky, J. McIninch

PROGRAM INFORMATION

Sequence : Gordonia phage Ailee complete sequence, 58474 bp, circularly permuted, Cluster DE
Analysis Date : 7/23/17 at 18:45:07
Pages : 29
Sequence Length : 58474 bp
GC Content : 67.51%

Window Length : 96 bp
Window Step : 12 bp
Threshold Value : 0.500

PS-Version : 1.2

GeneMark Options : PostScript graph,
Mark ORFs / splice sites,
List ORFs,
List regions and/or splice sites,

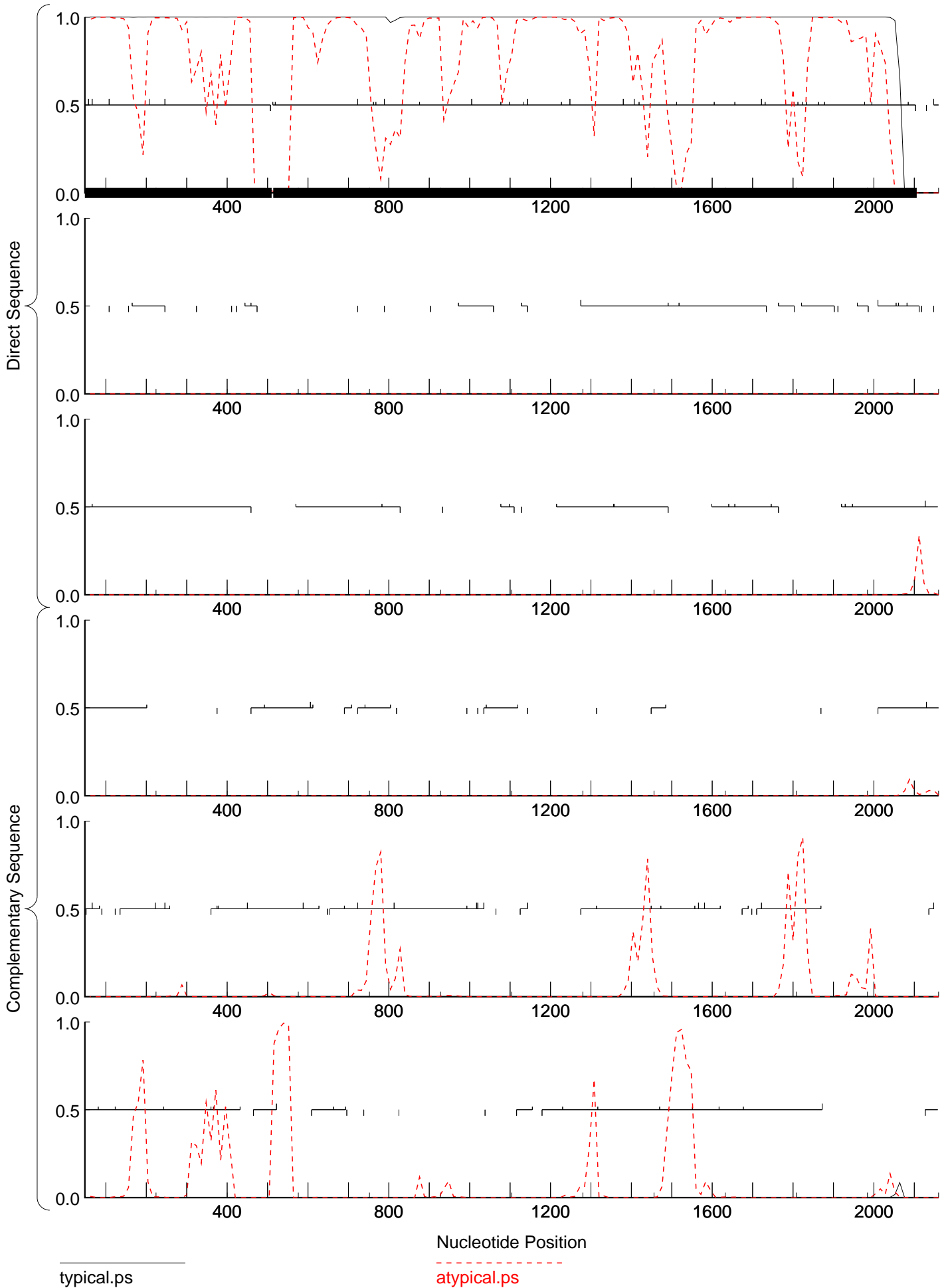
Matrix notes & comments

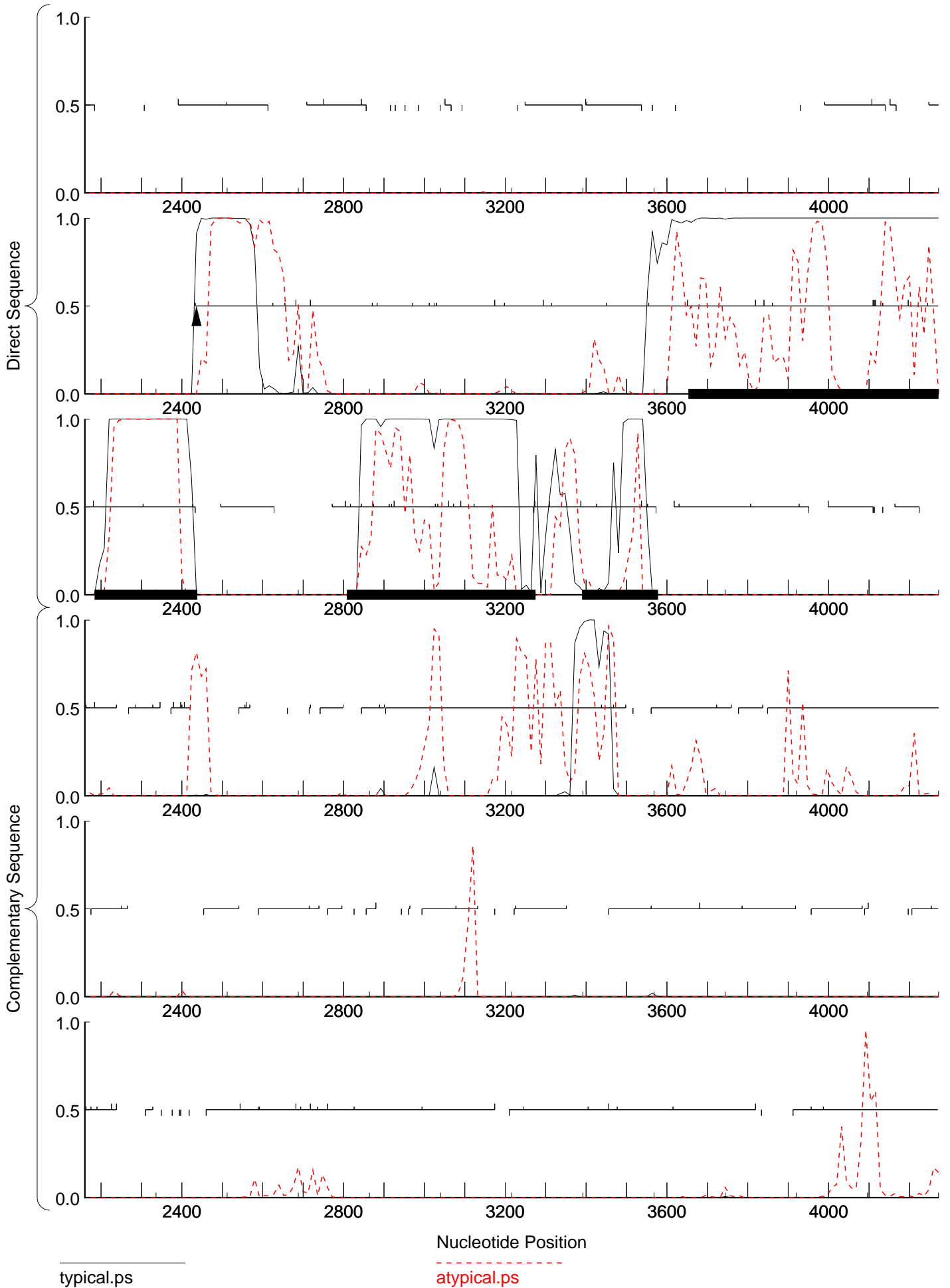
Training set derived by GeneMarkS, 4.30 October 2014
Sun Jul 23 18:45:06 2017

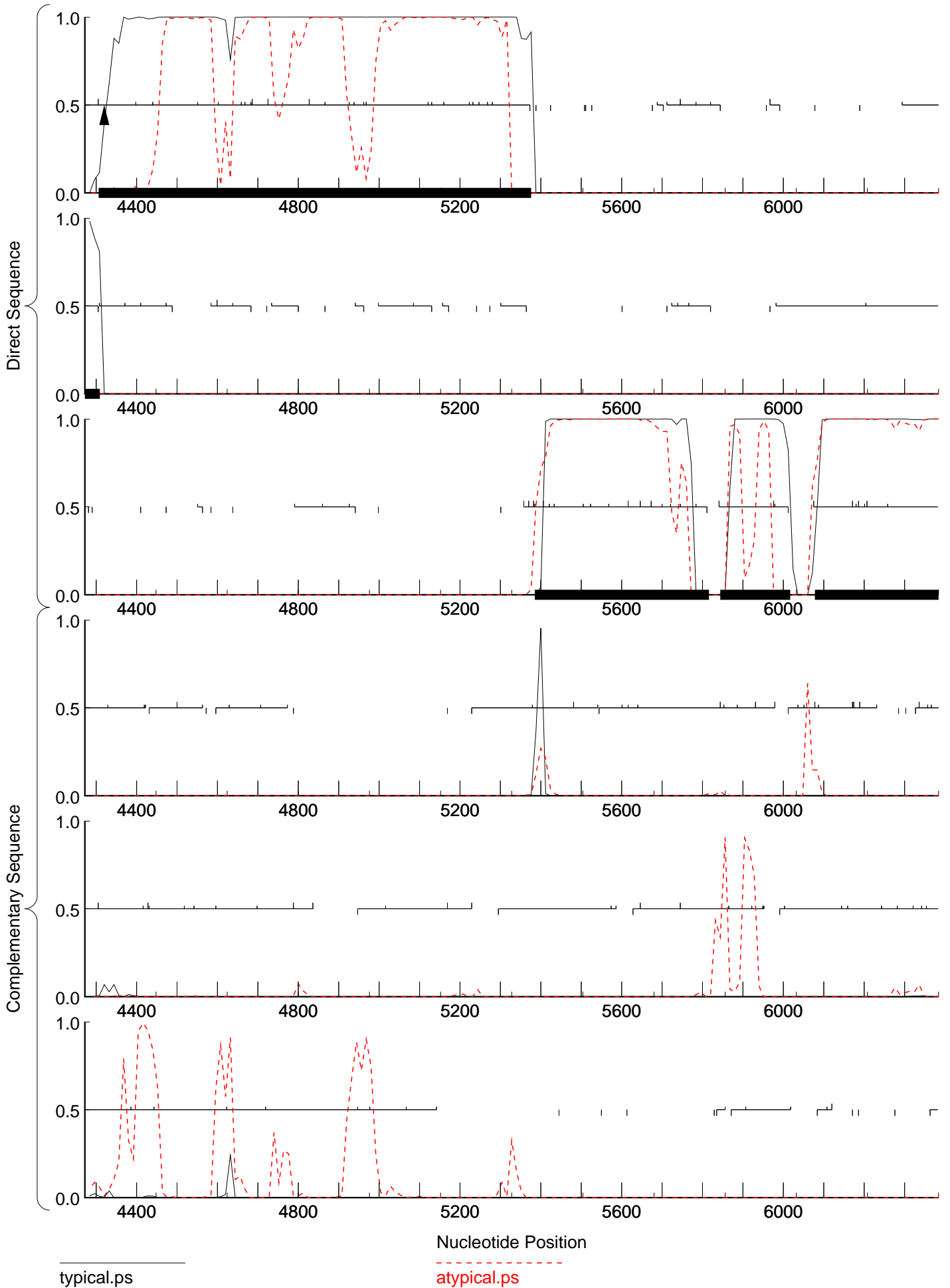
MATRIX INFORMATION

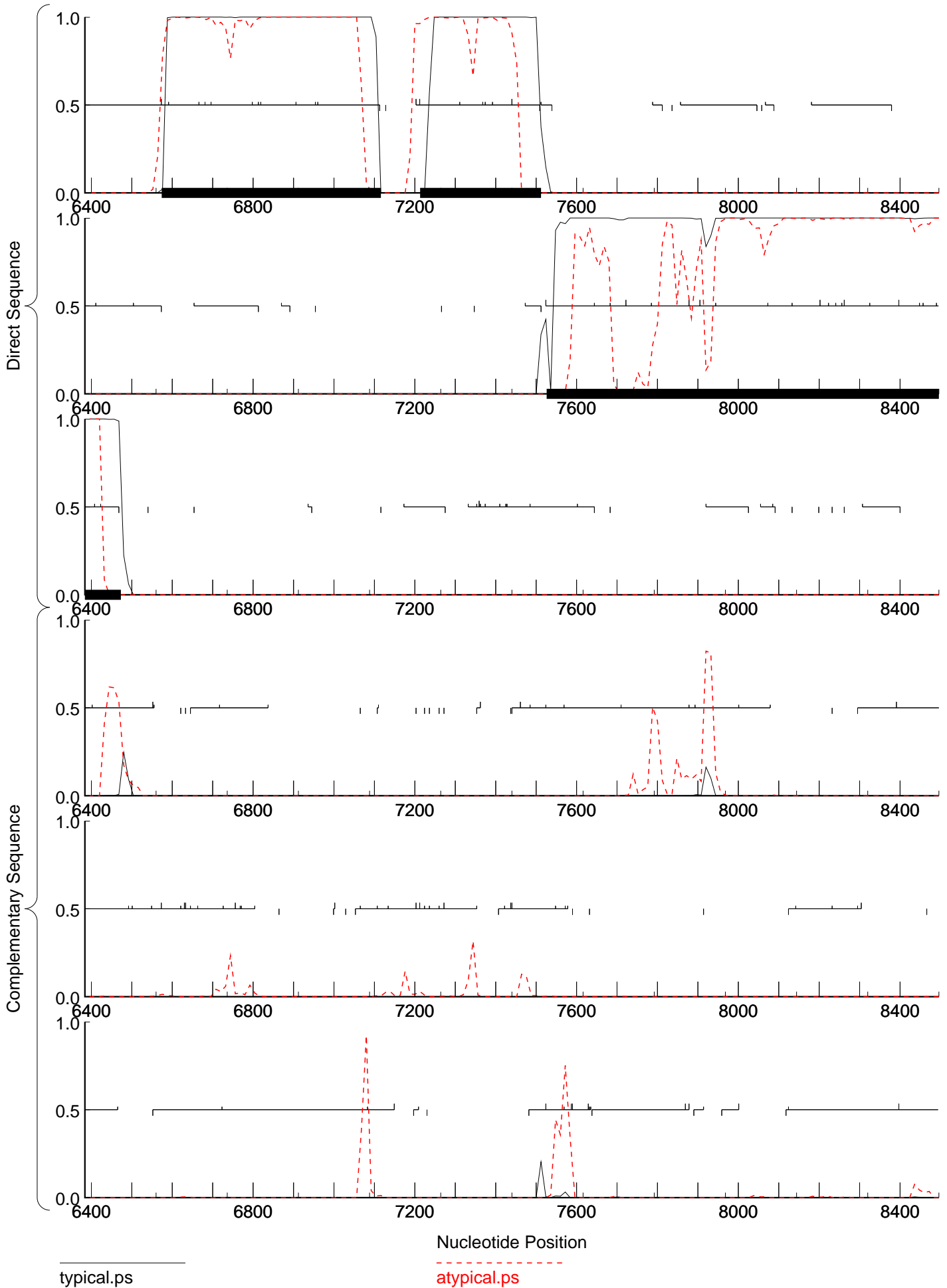
Matrix : -
Author : -
Order : 4

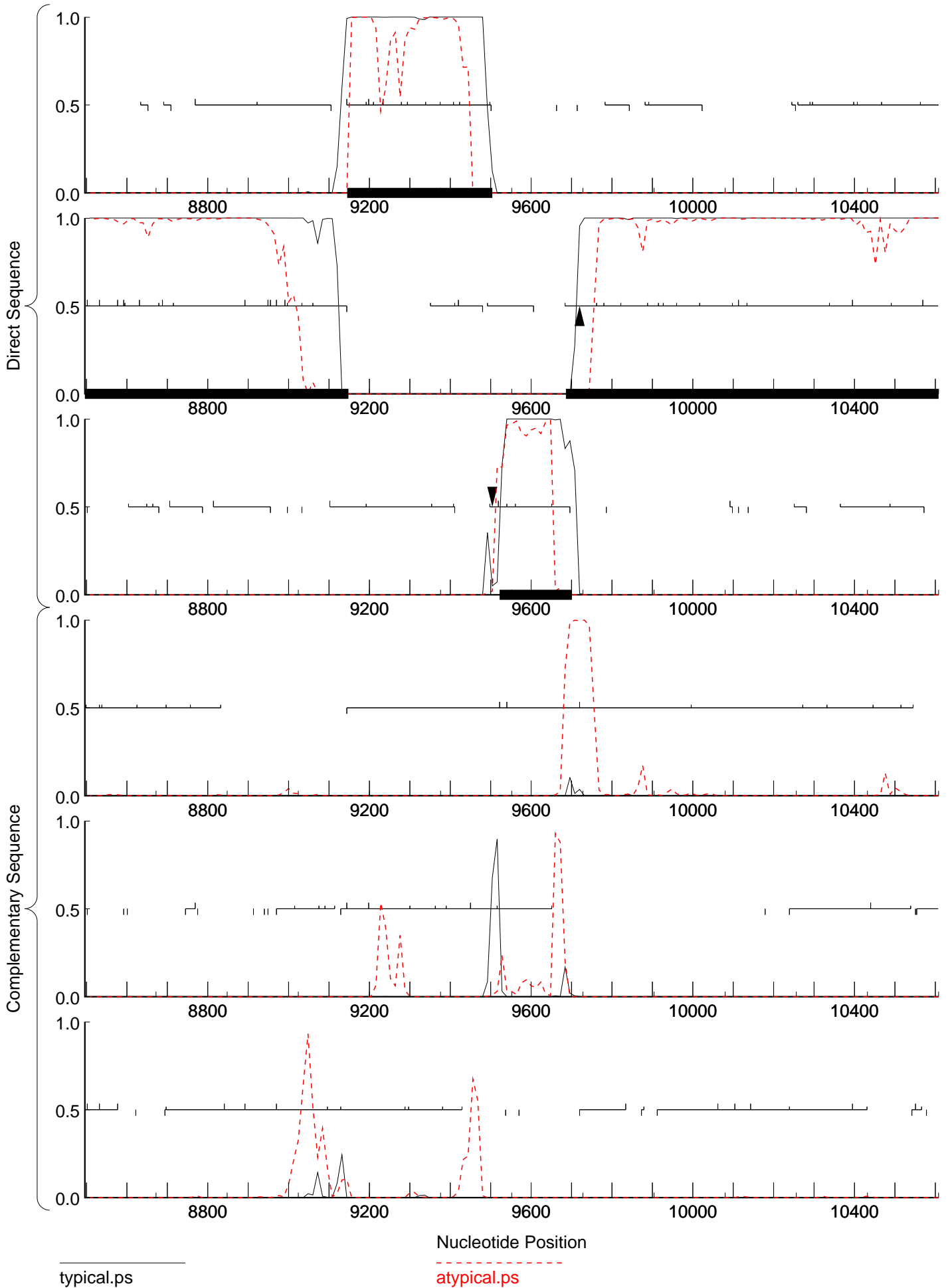
Send questions / comments to:
Dr. M. Borodovsky
Georgia Institute of Technology
School of Biology
Atlanta, GA 30332-0230

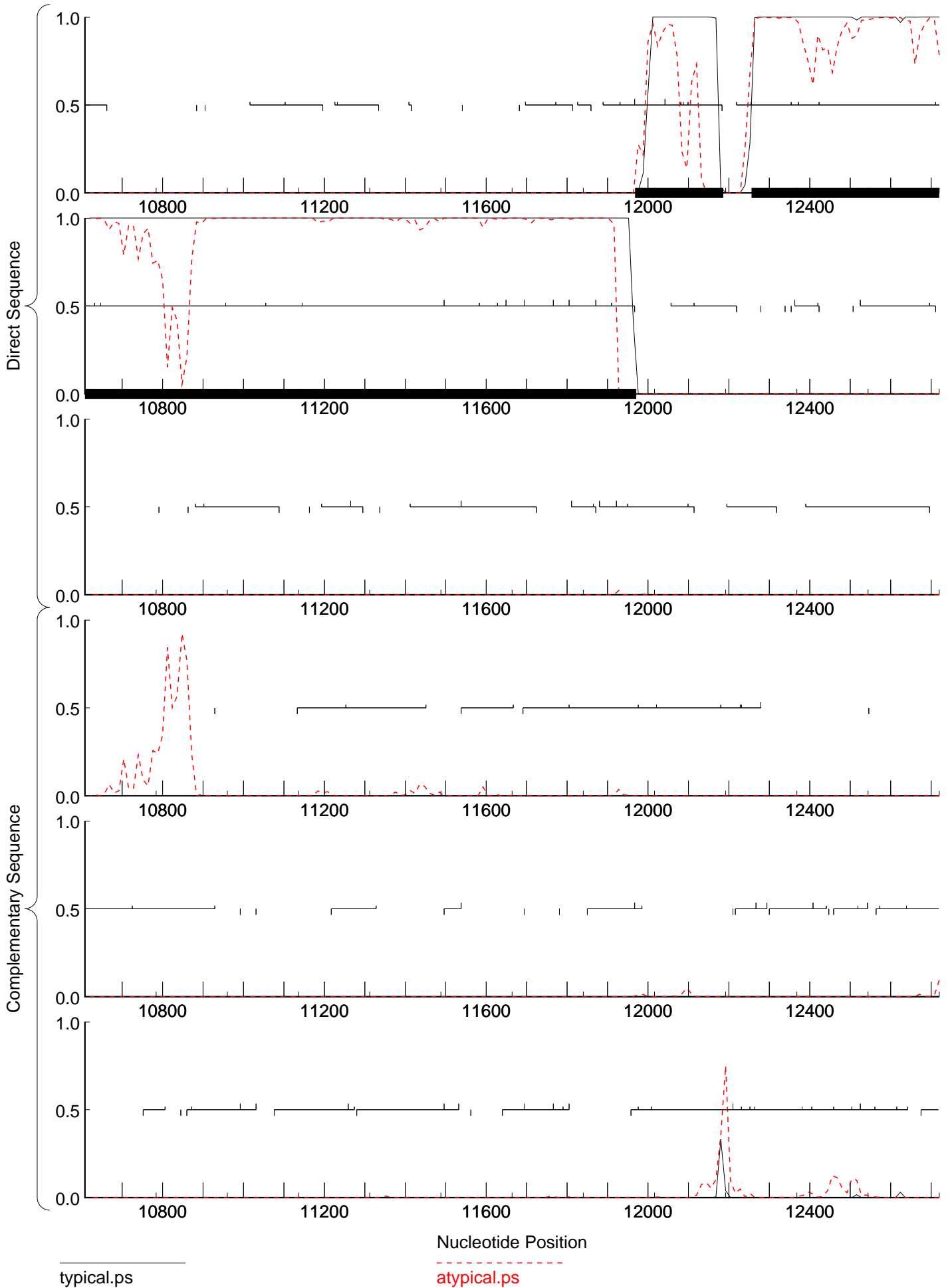


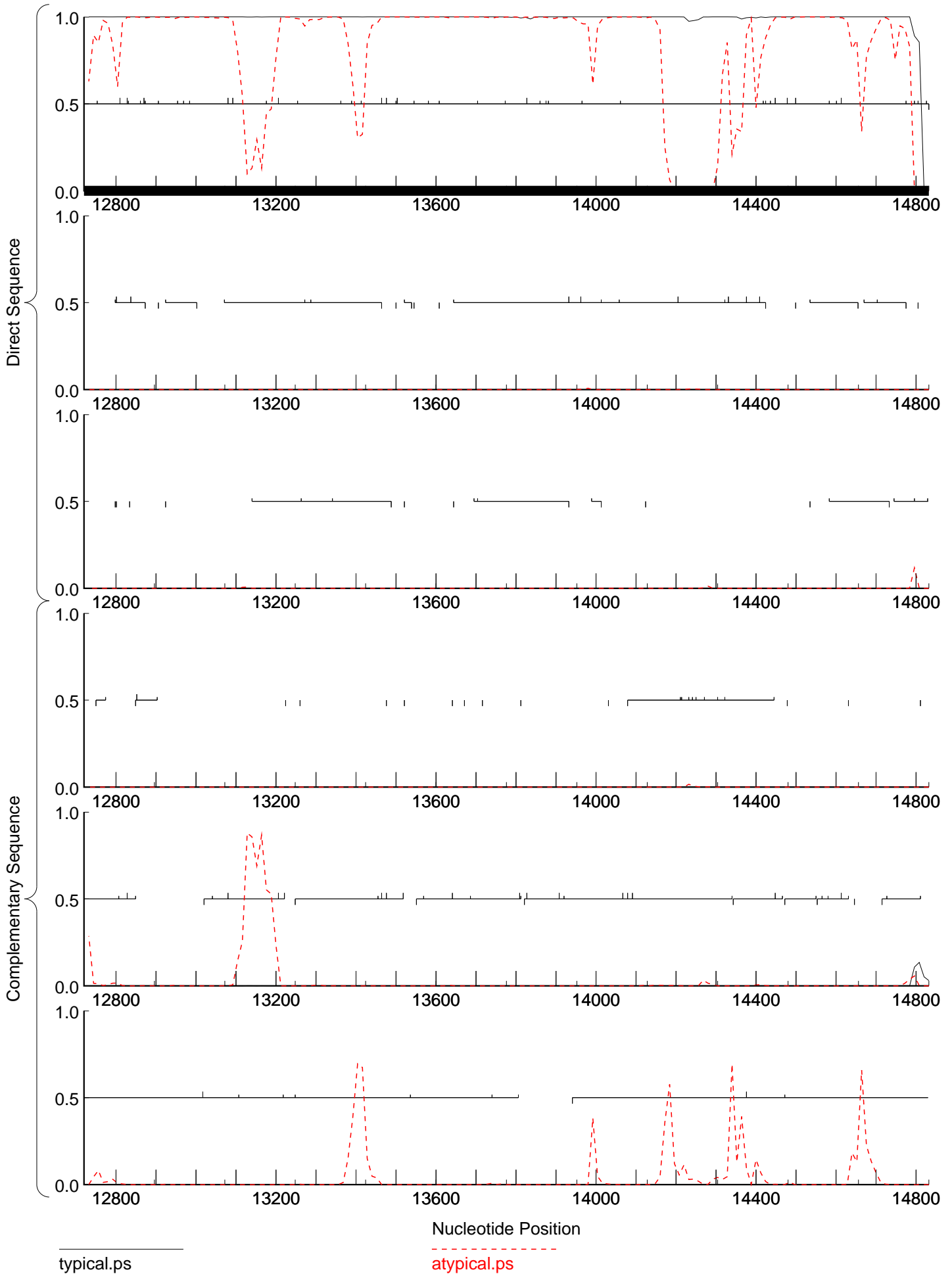


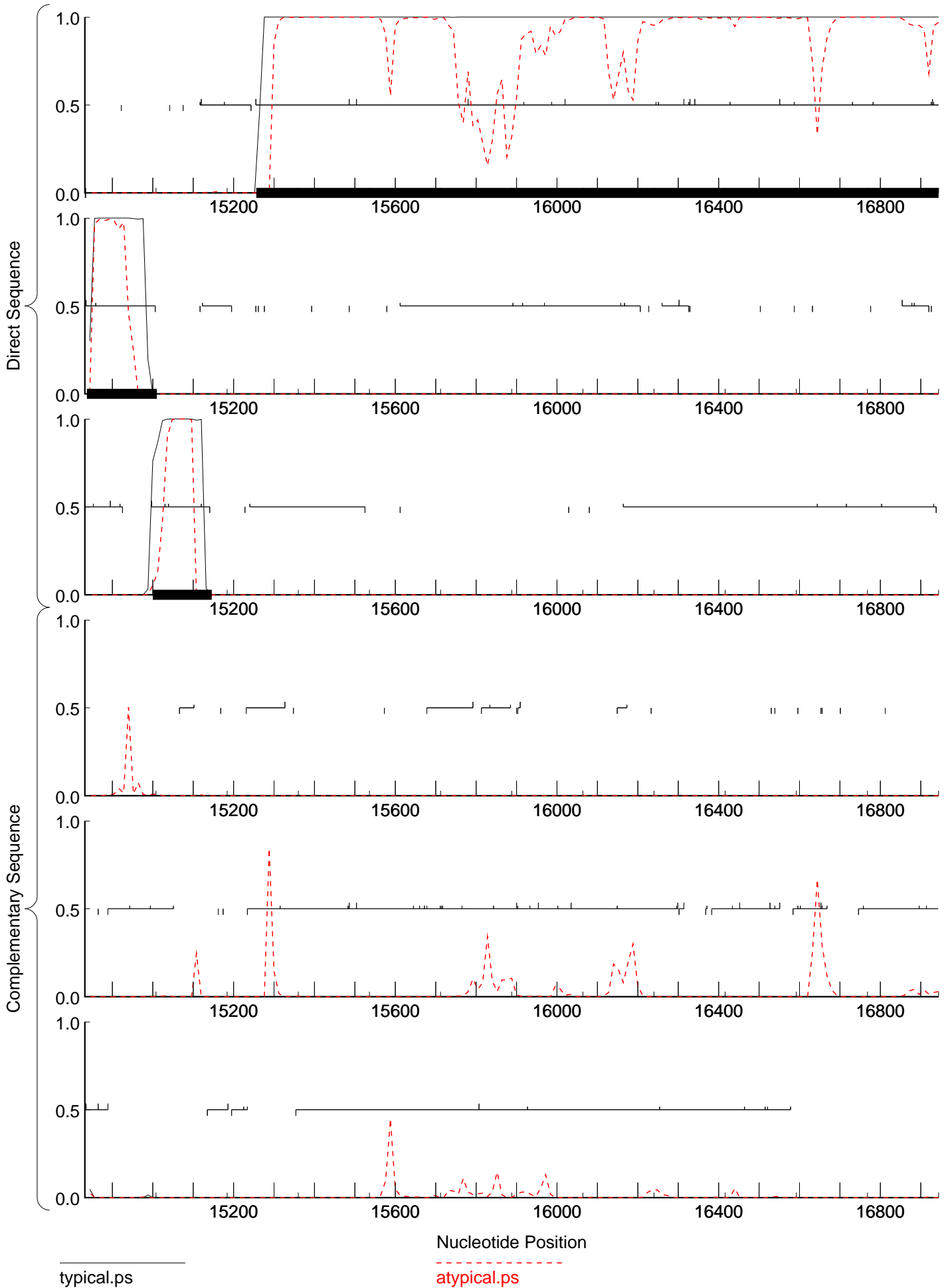


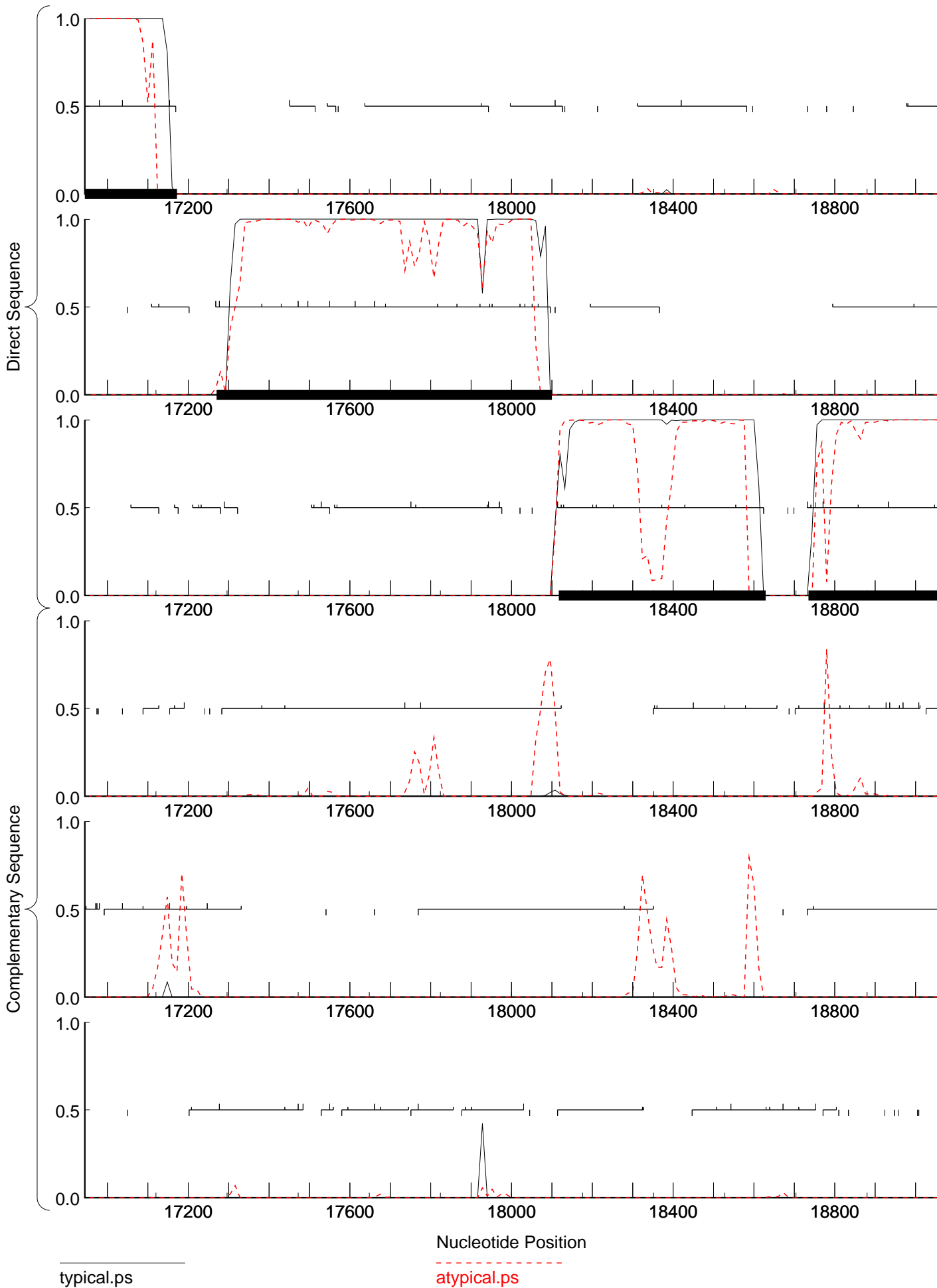


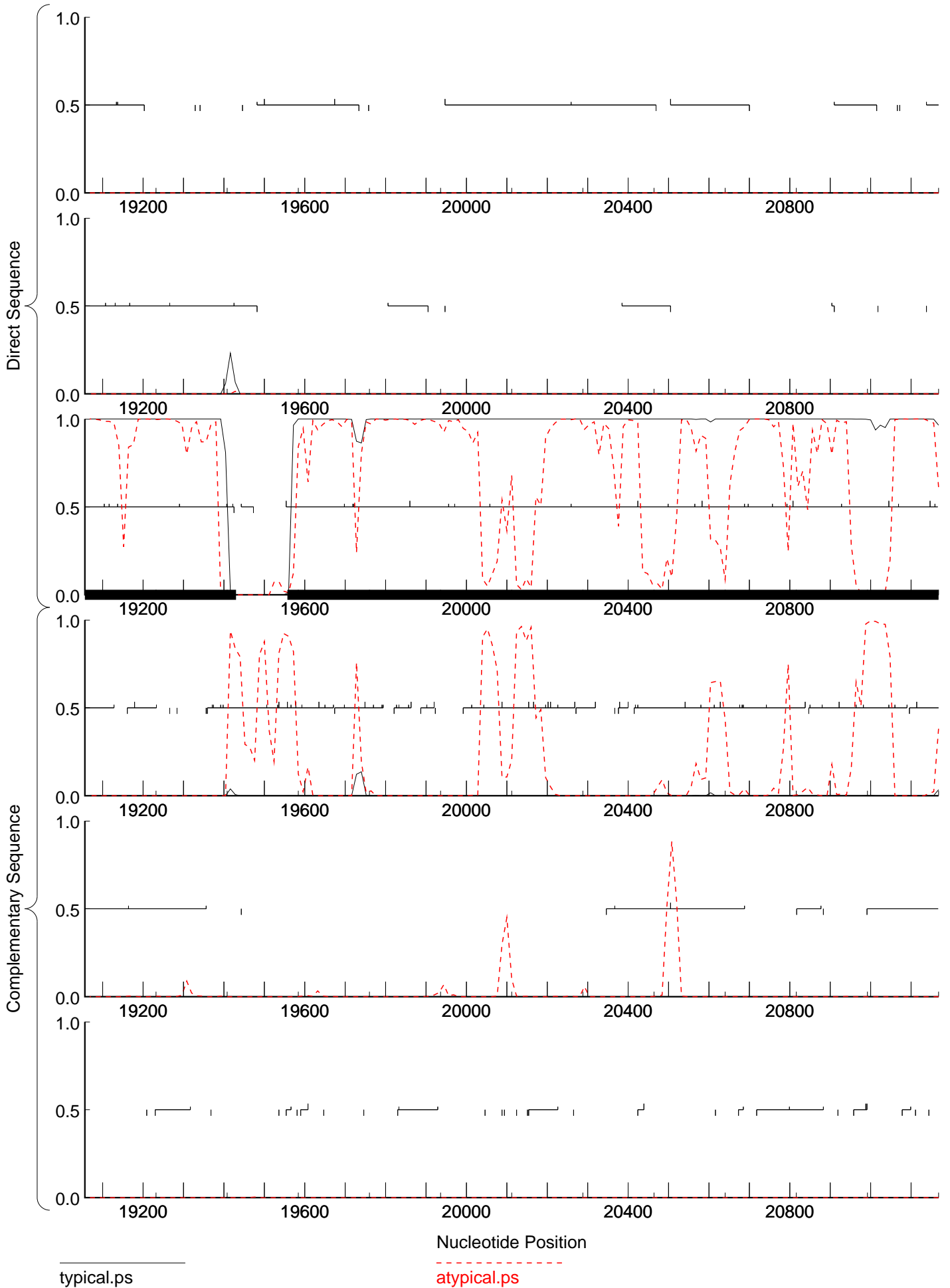






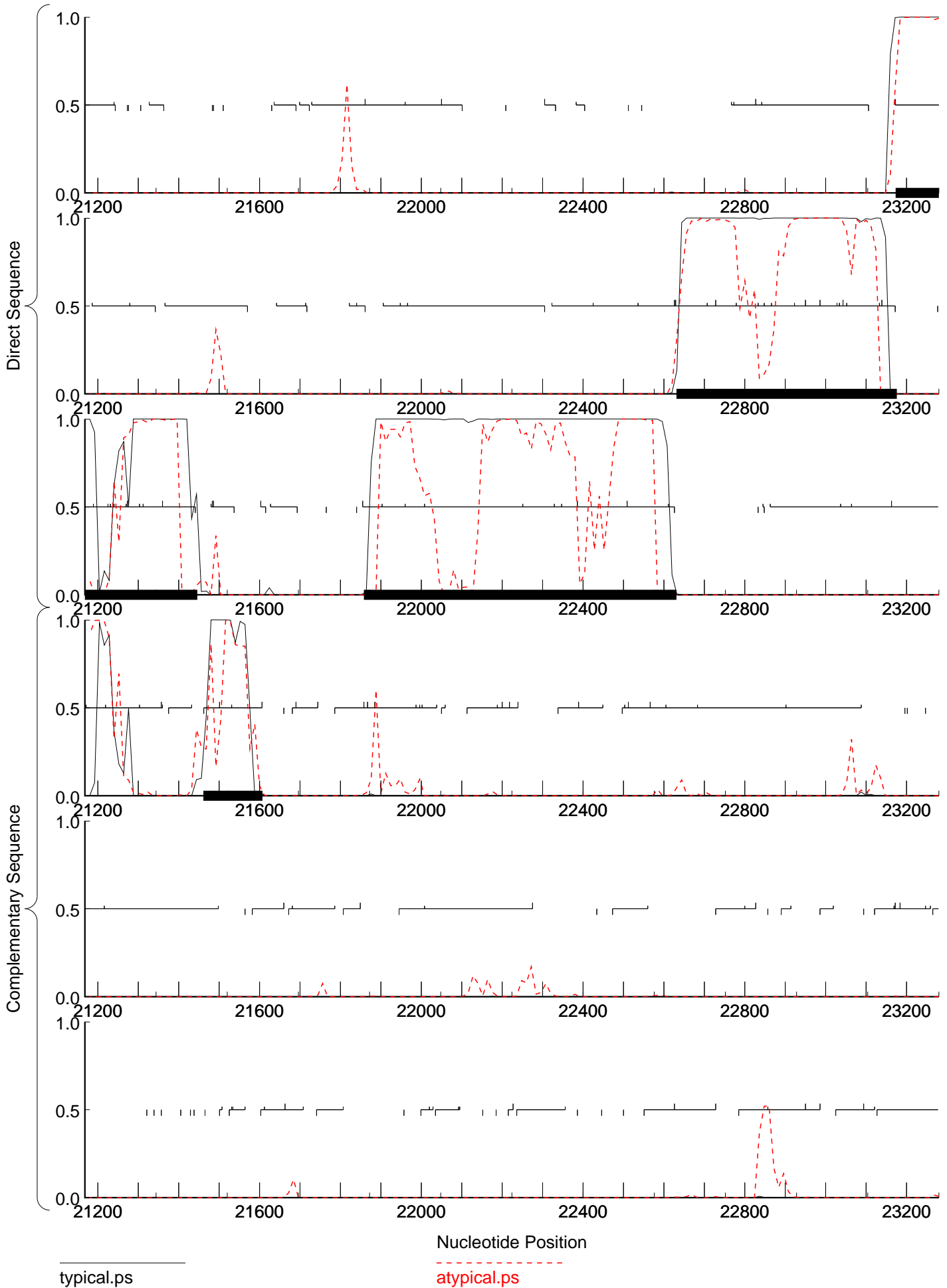


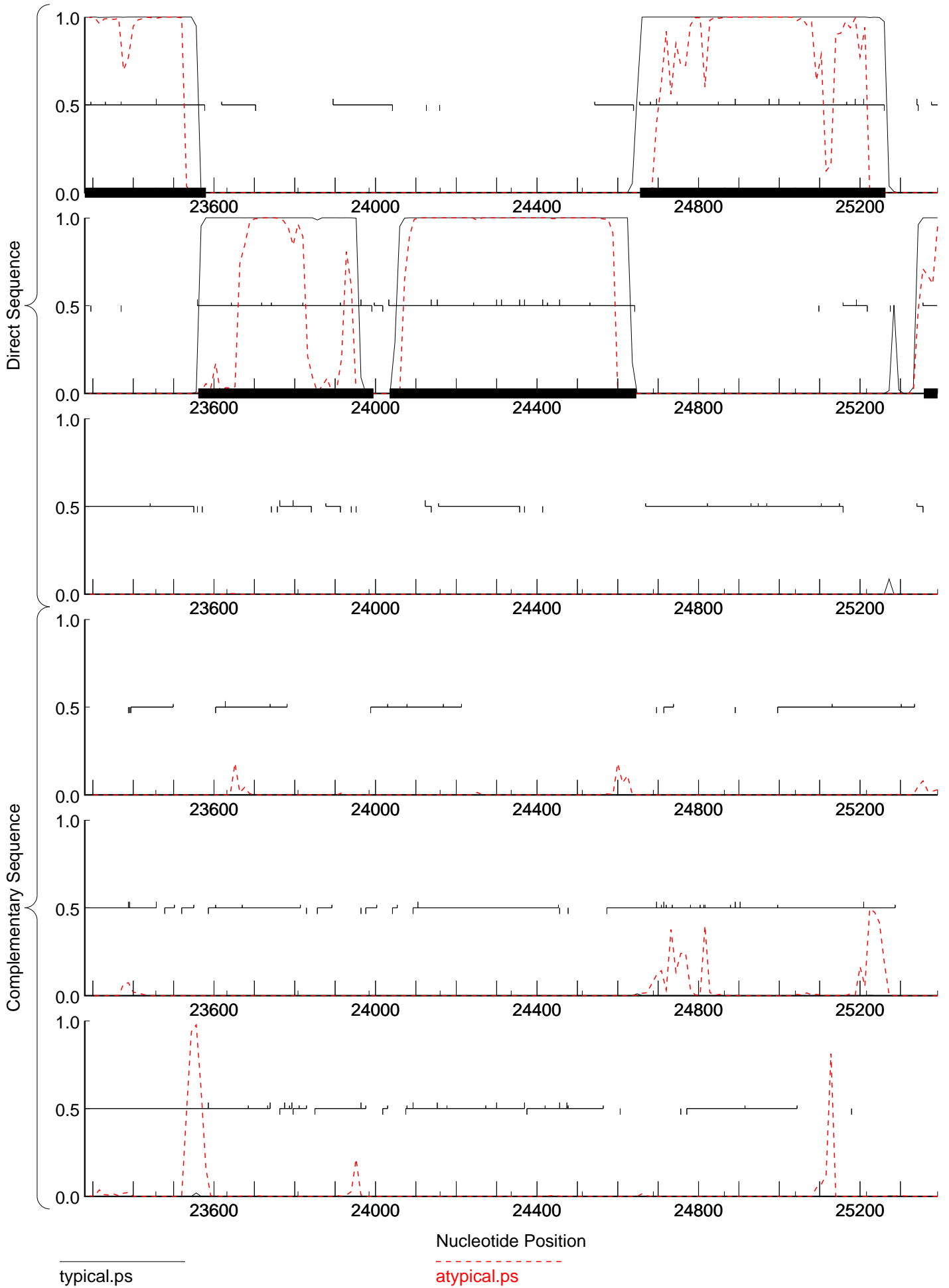


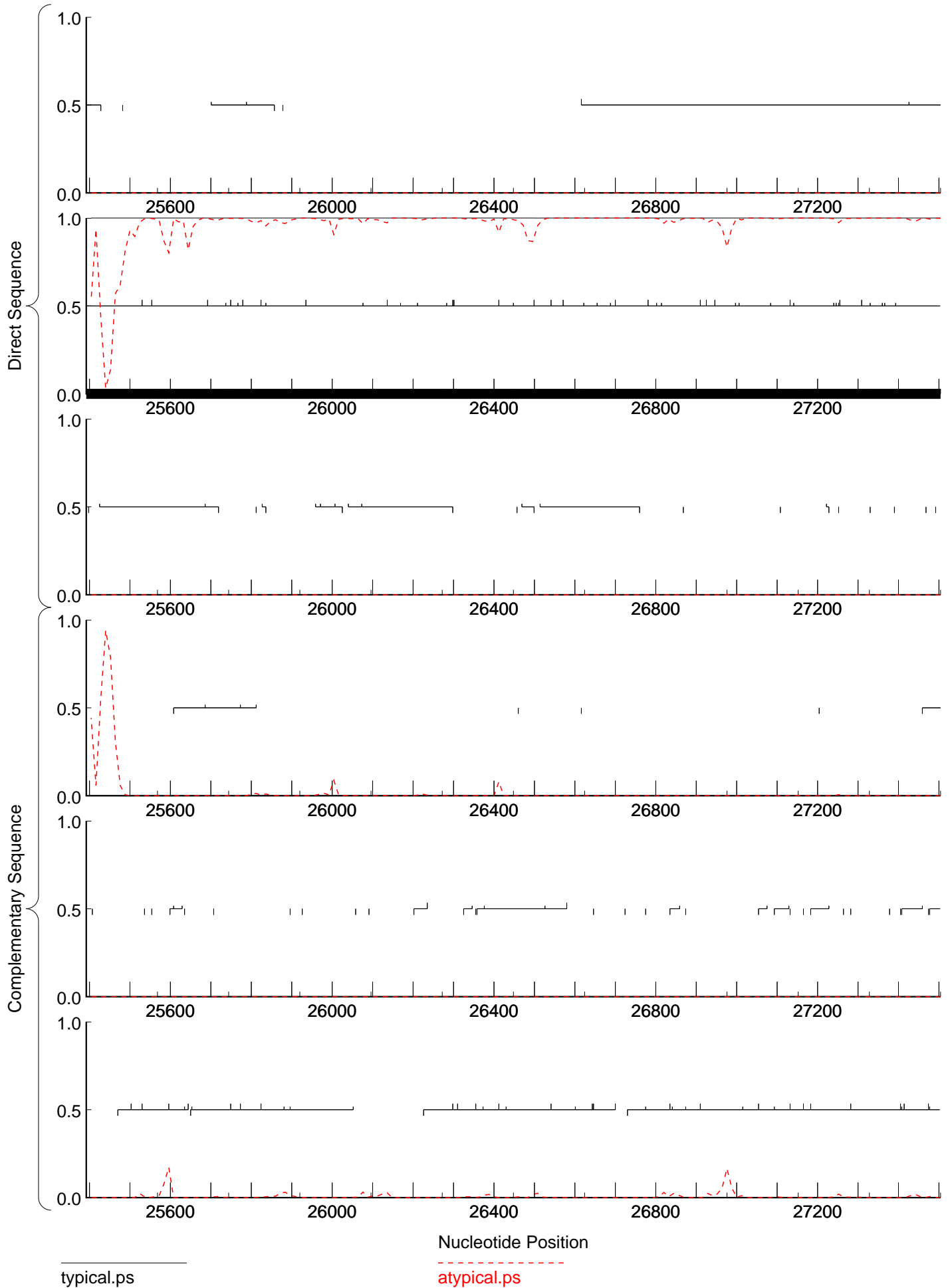


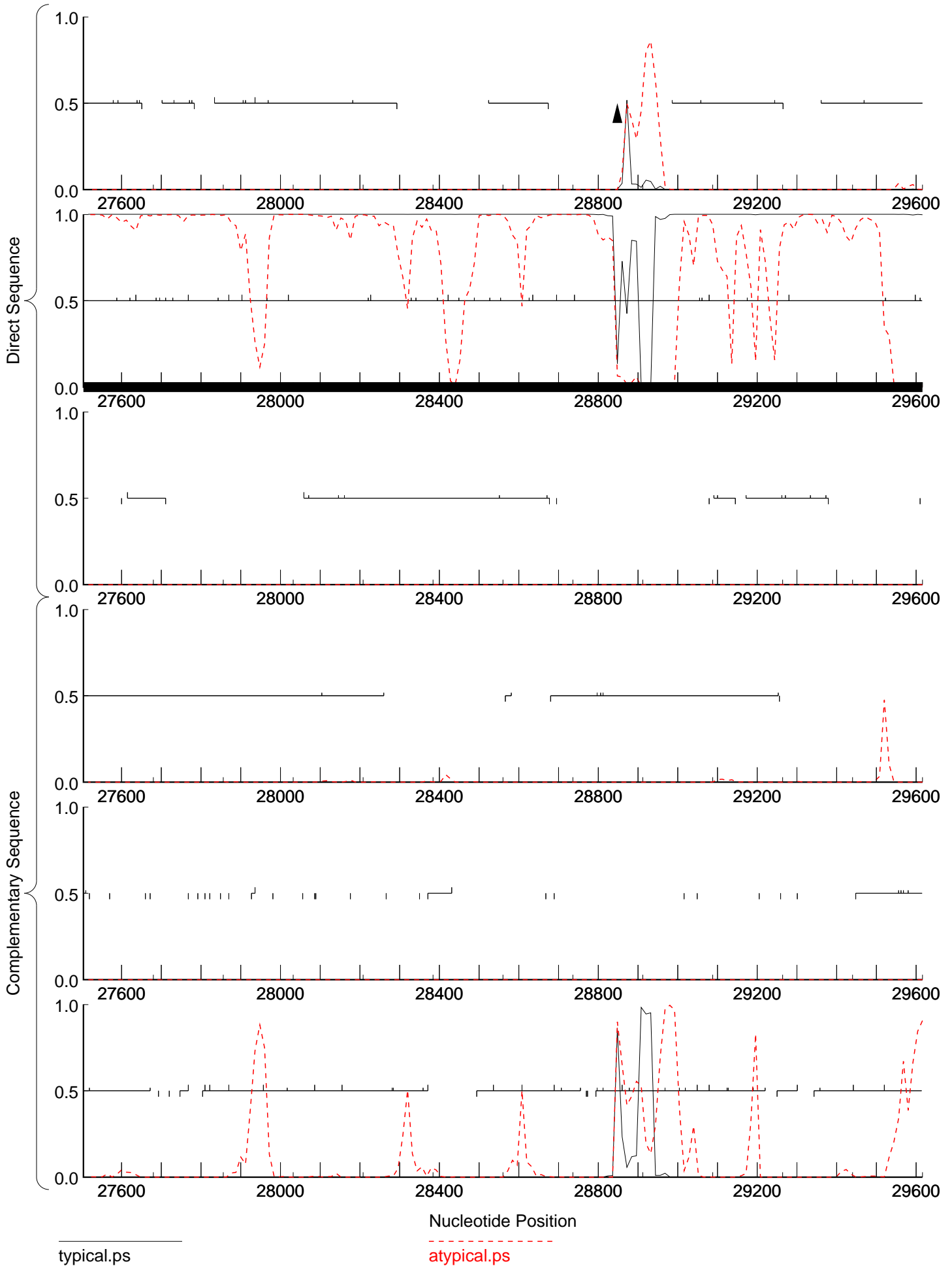
typical.ps

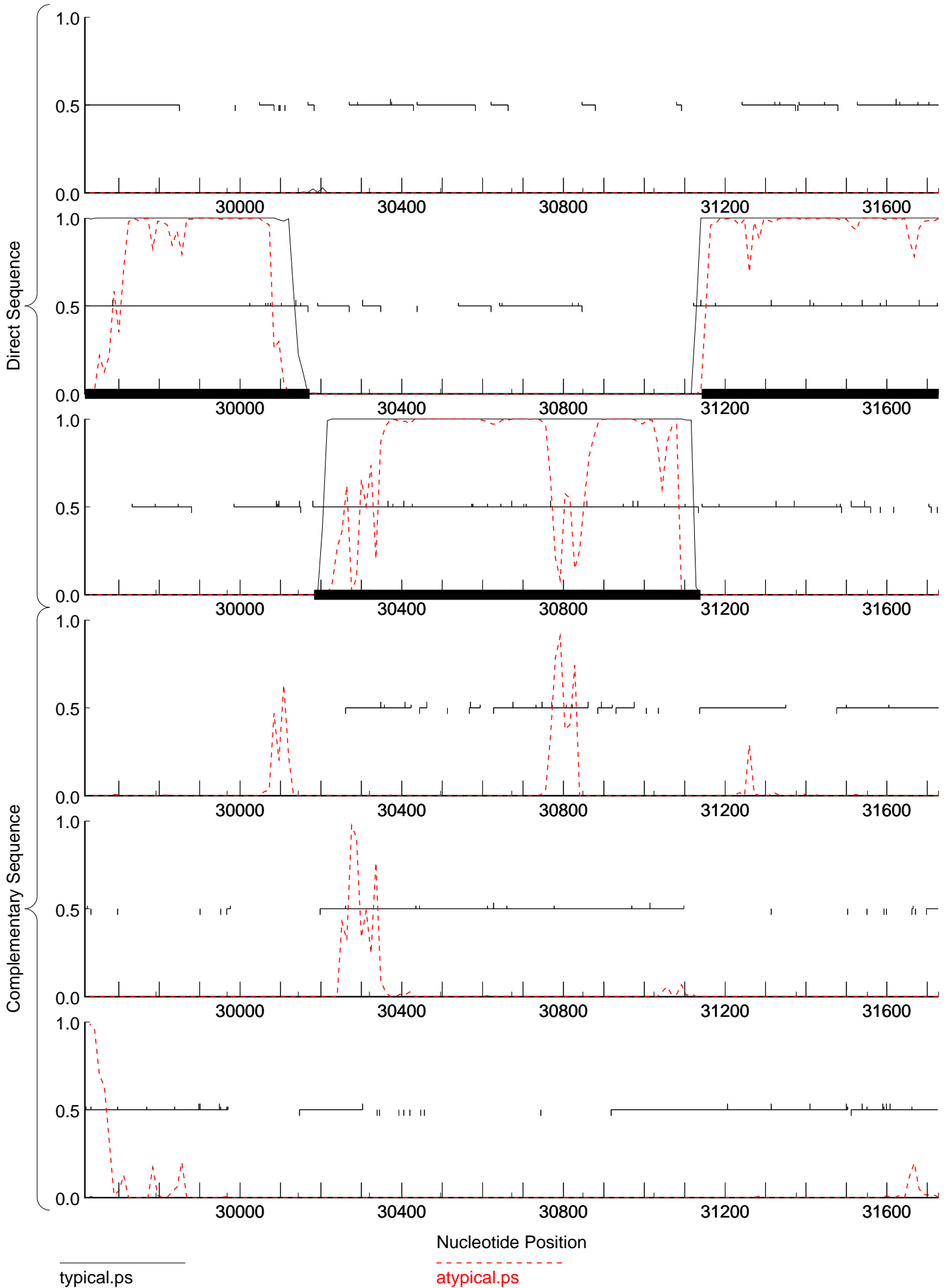
atypical.ps

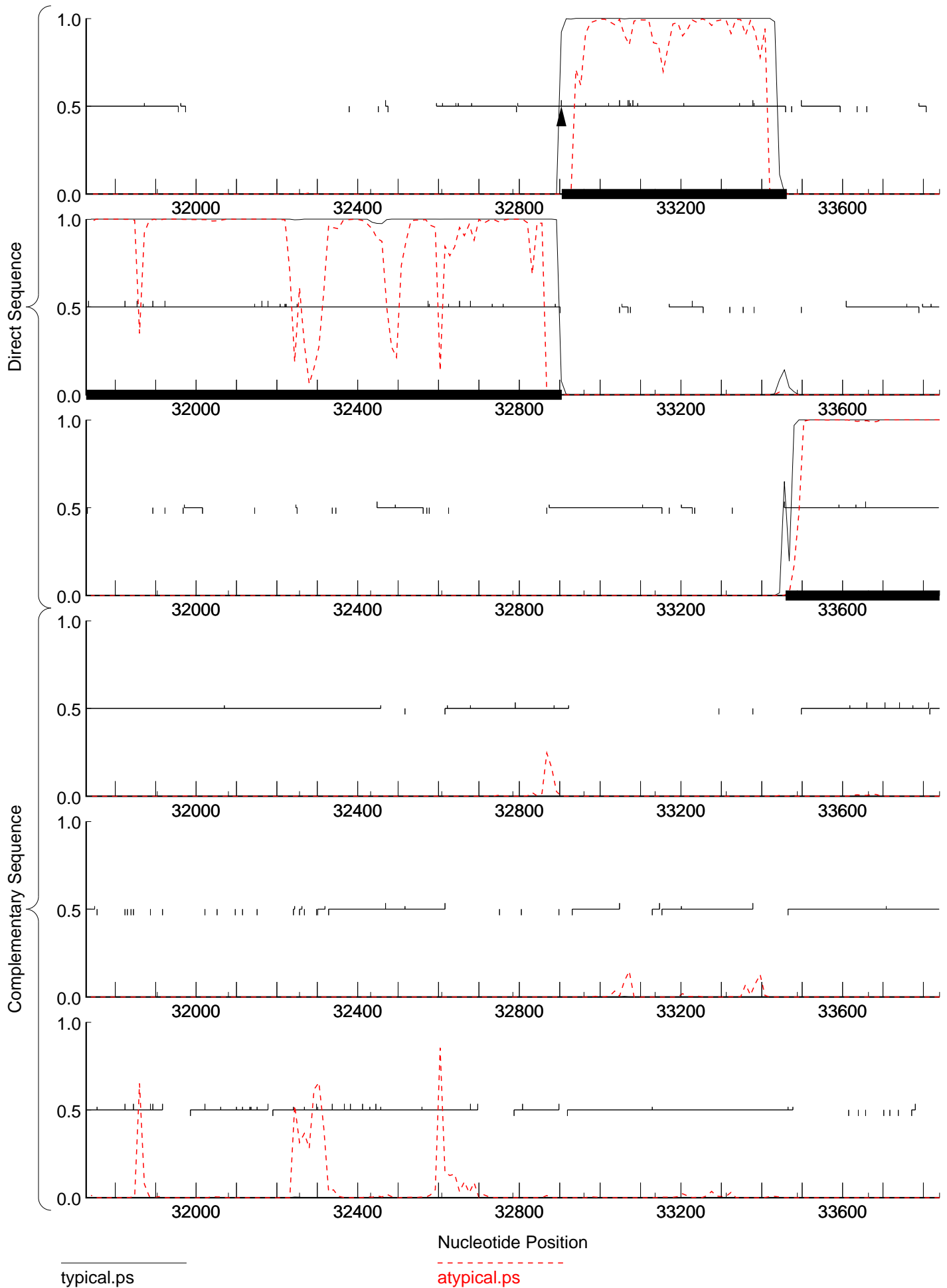


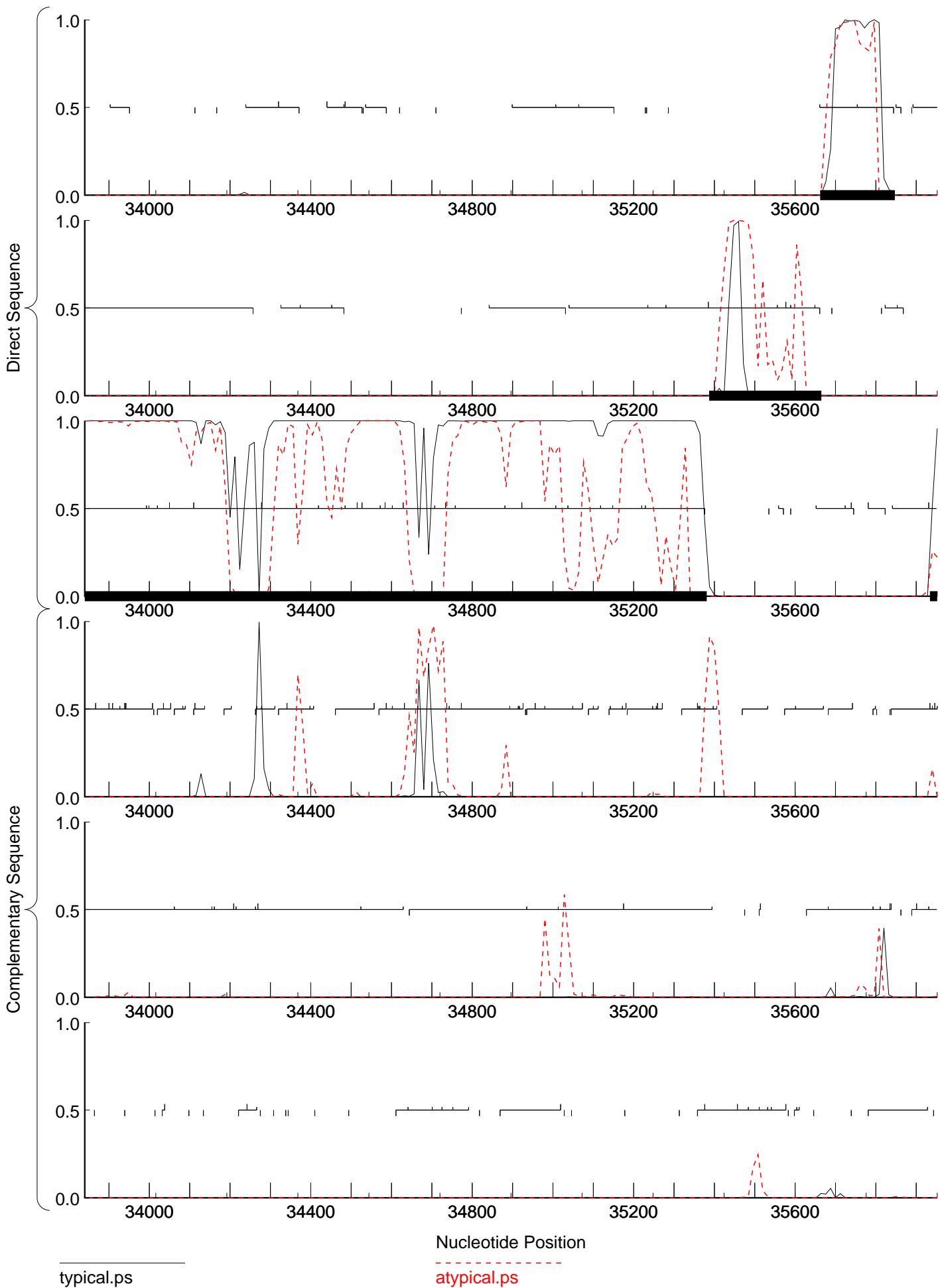


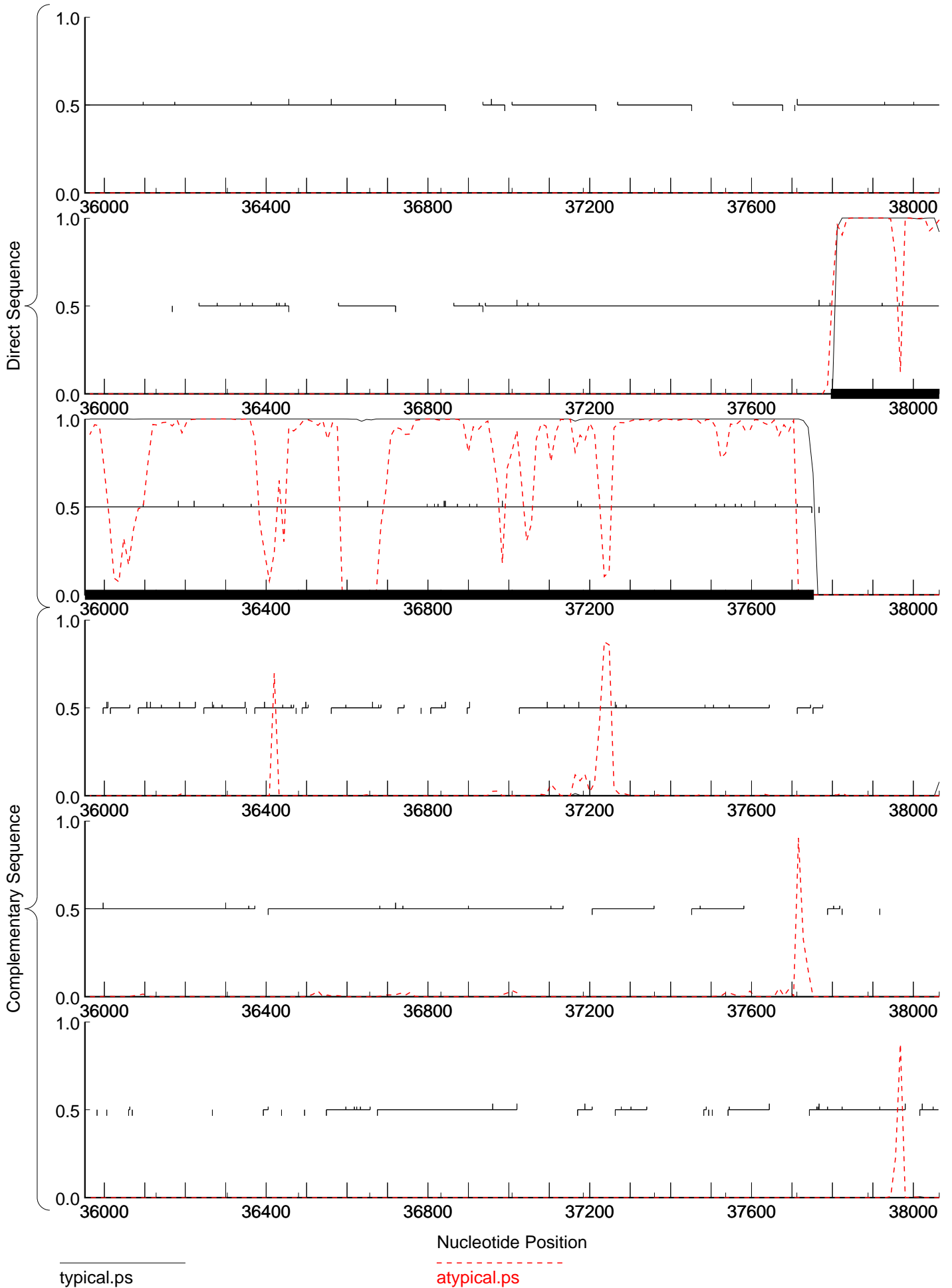


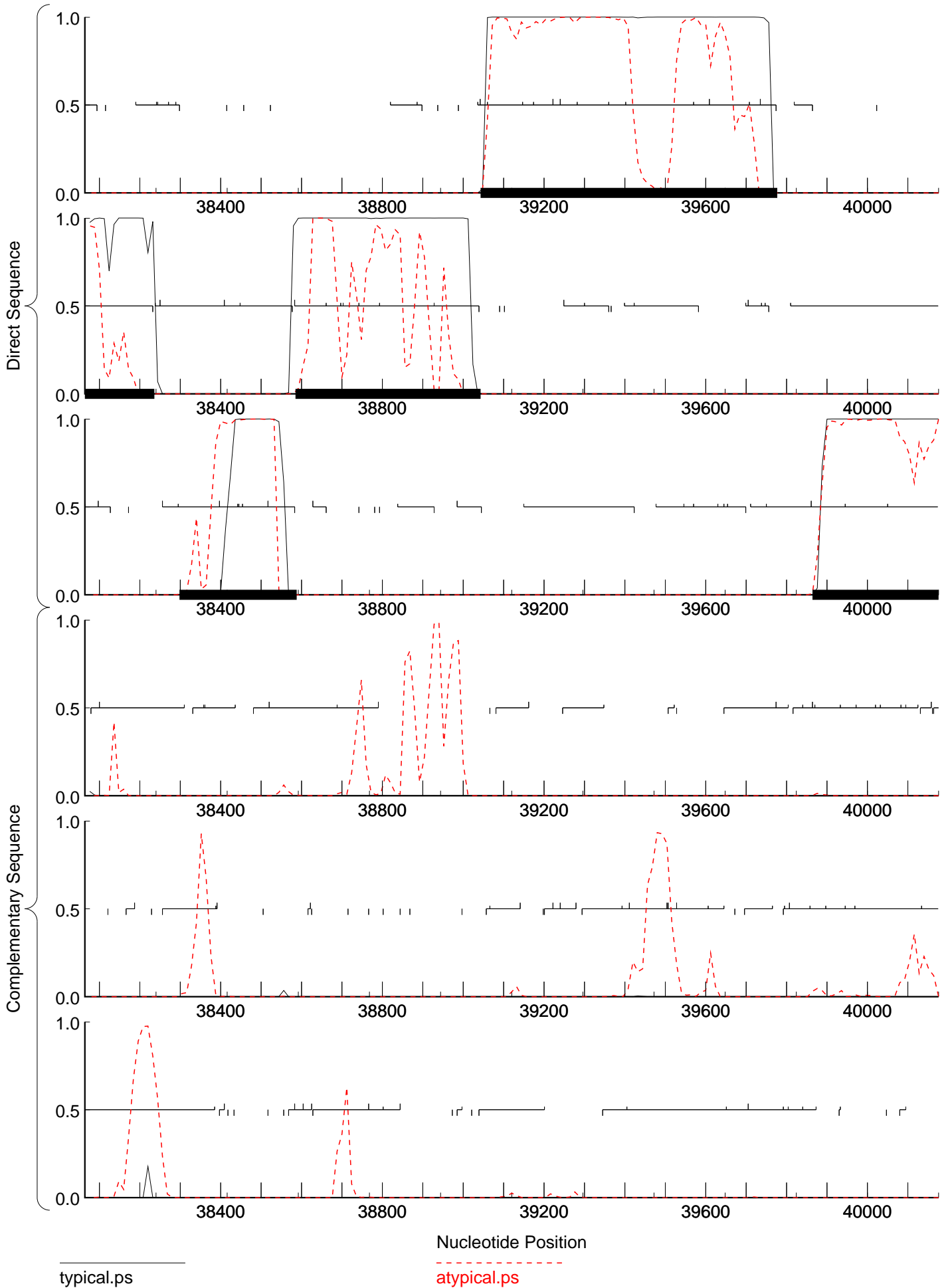


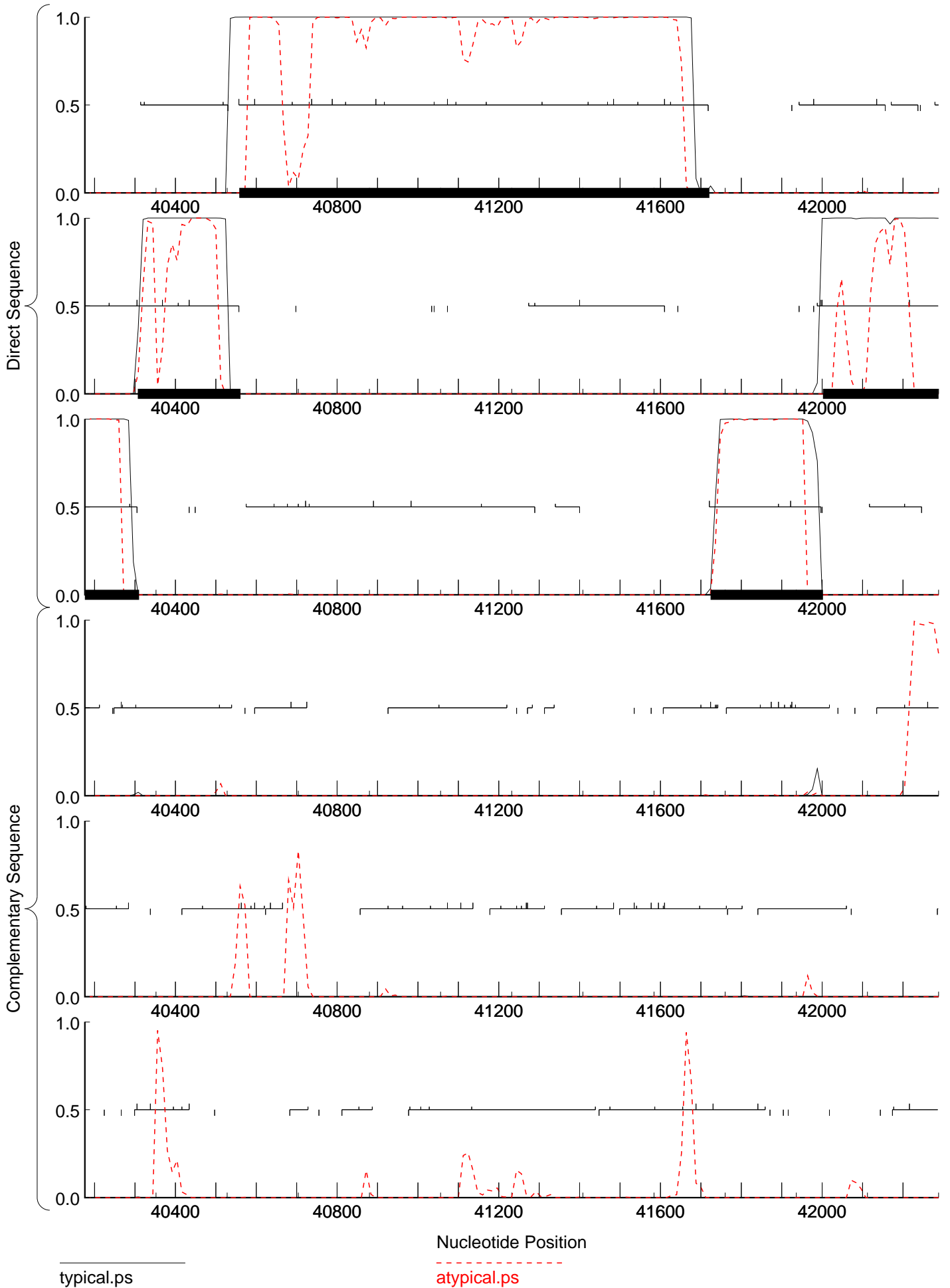


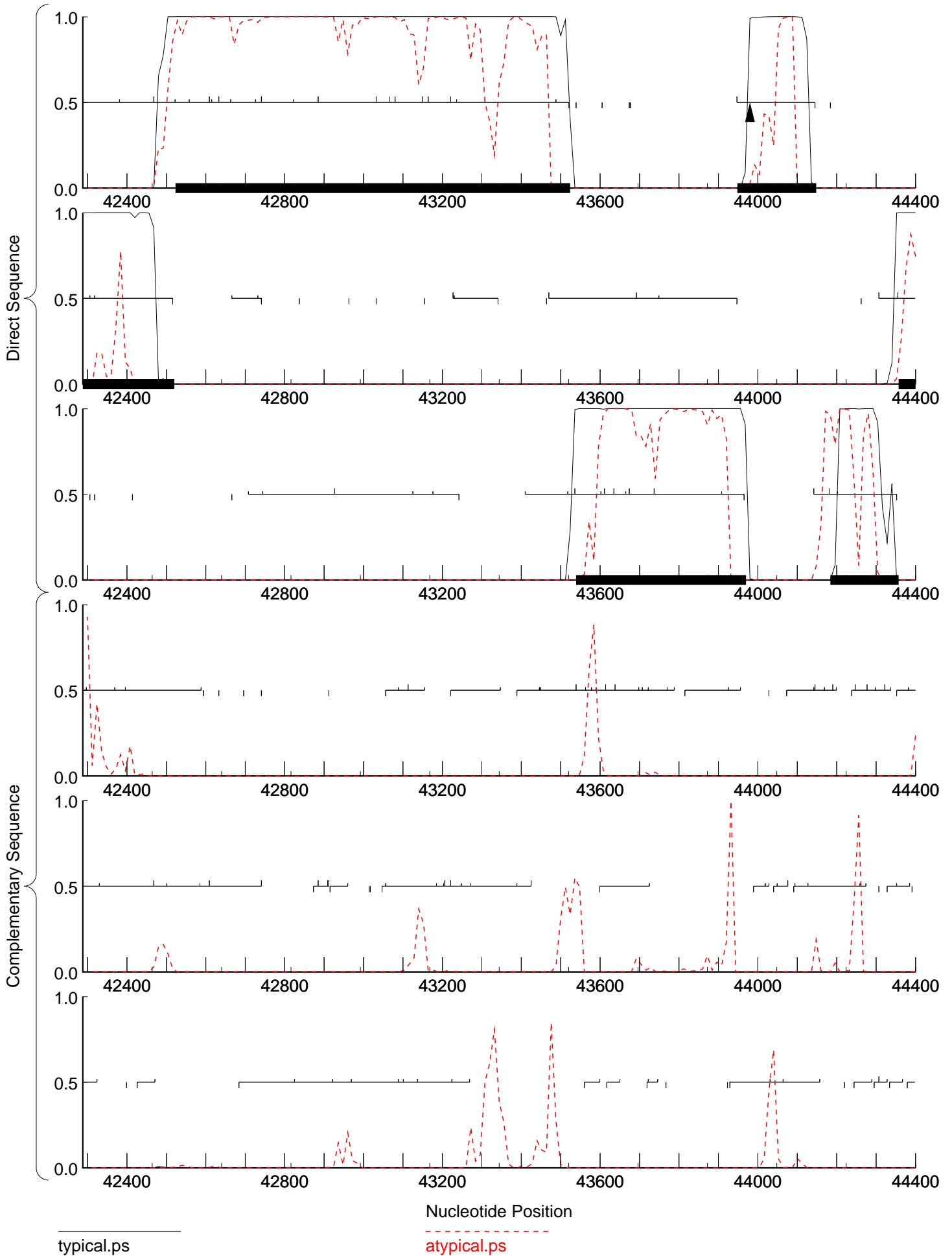






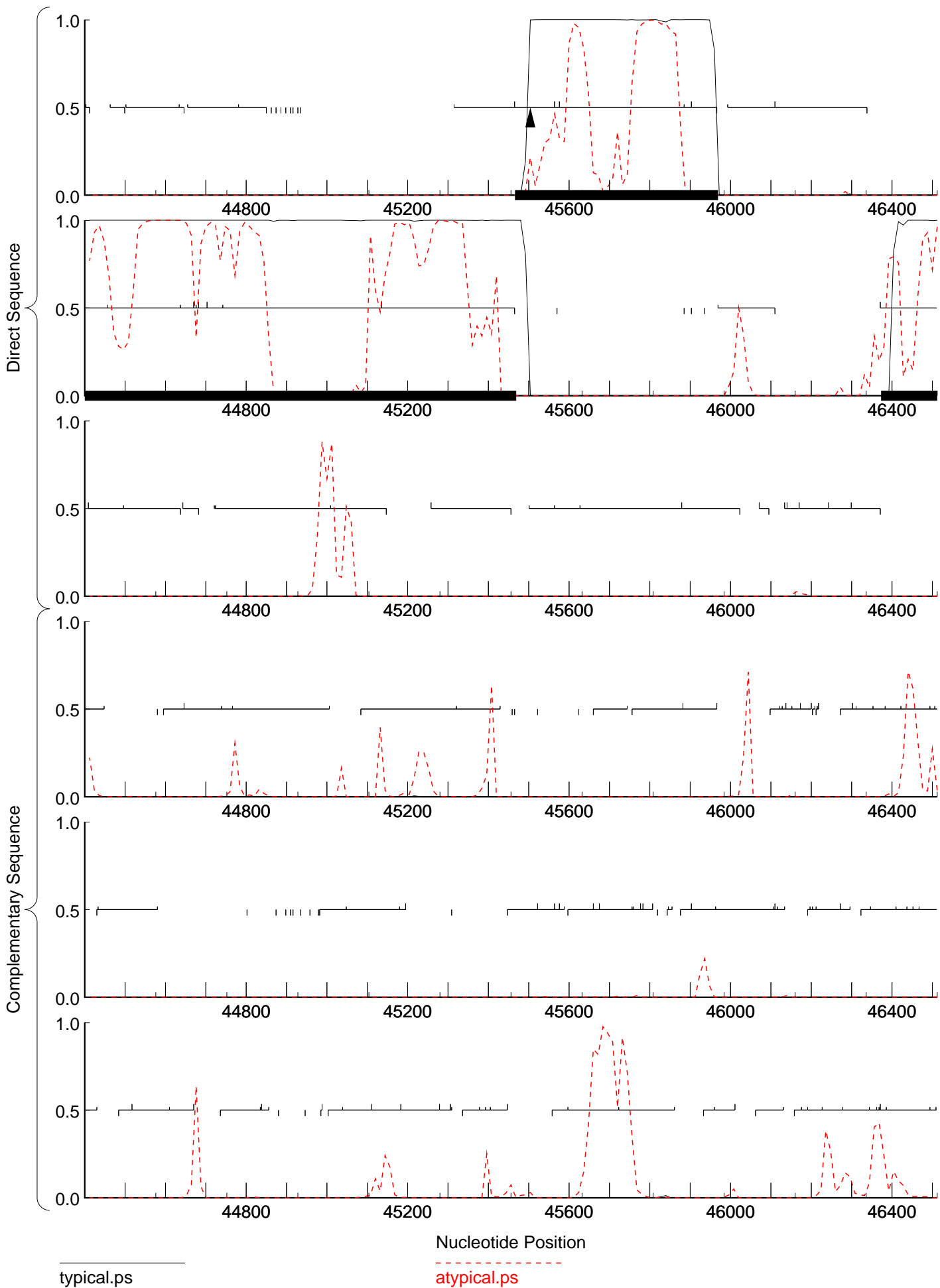






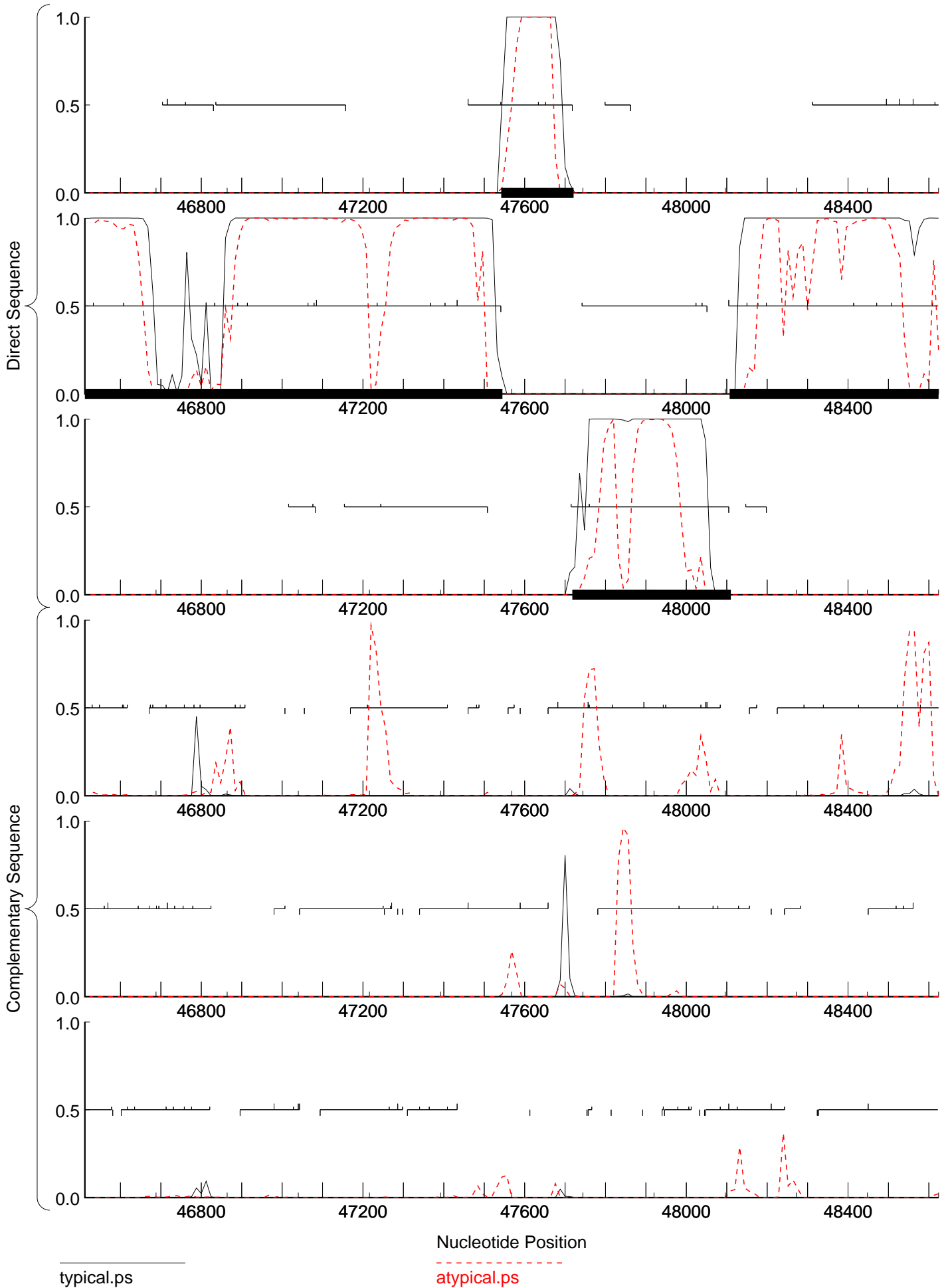
typical.ps

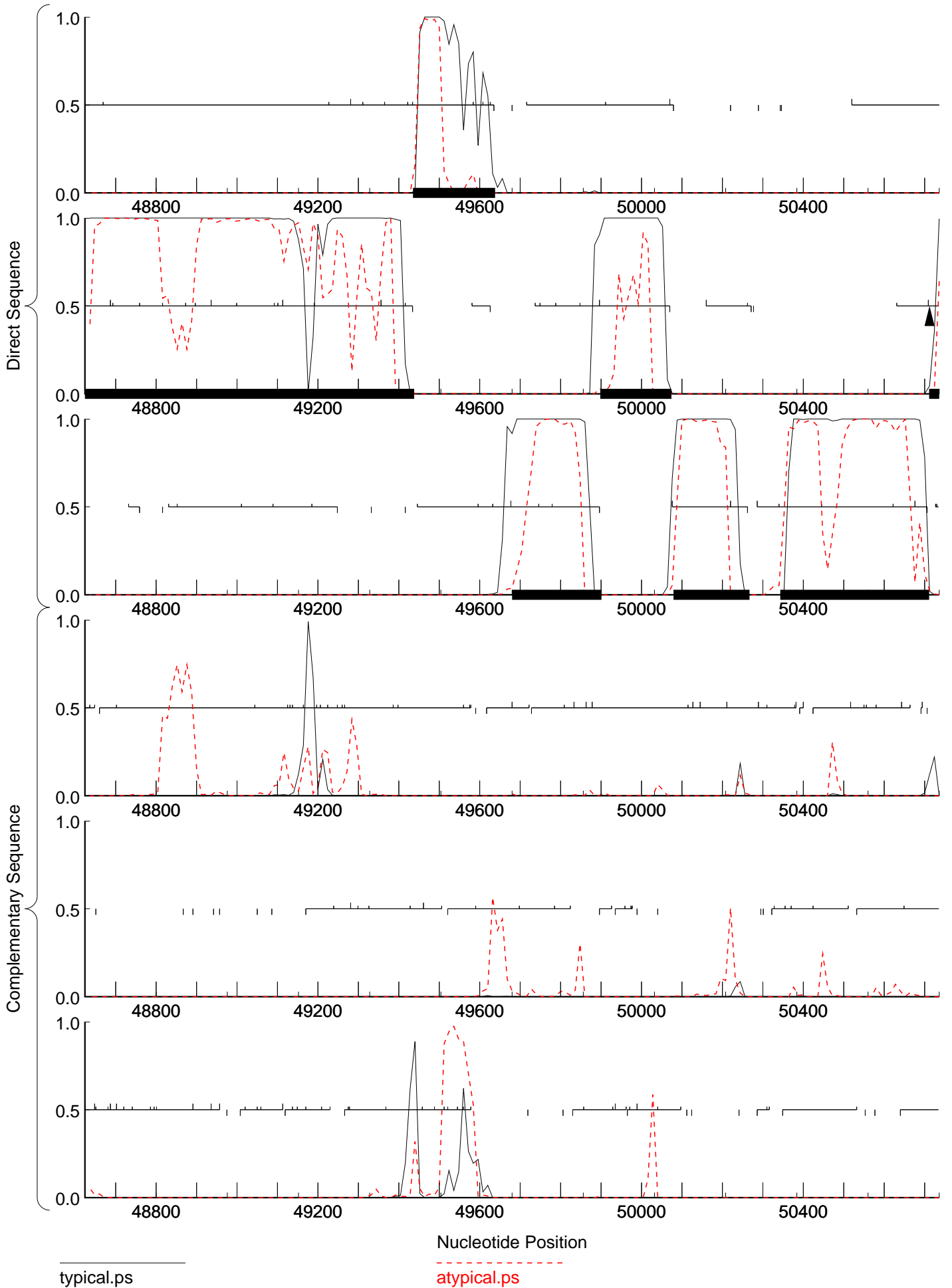
atypical.ps

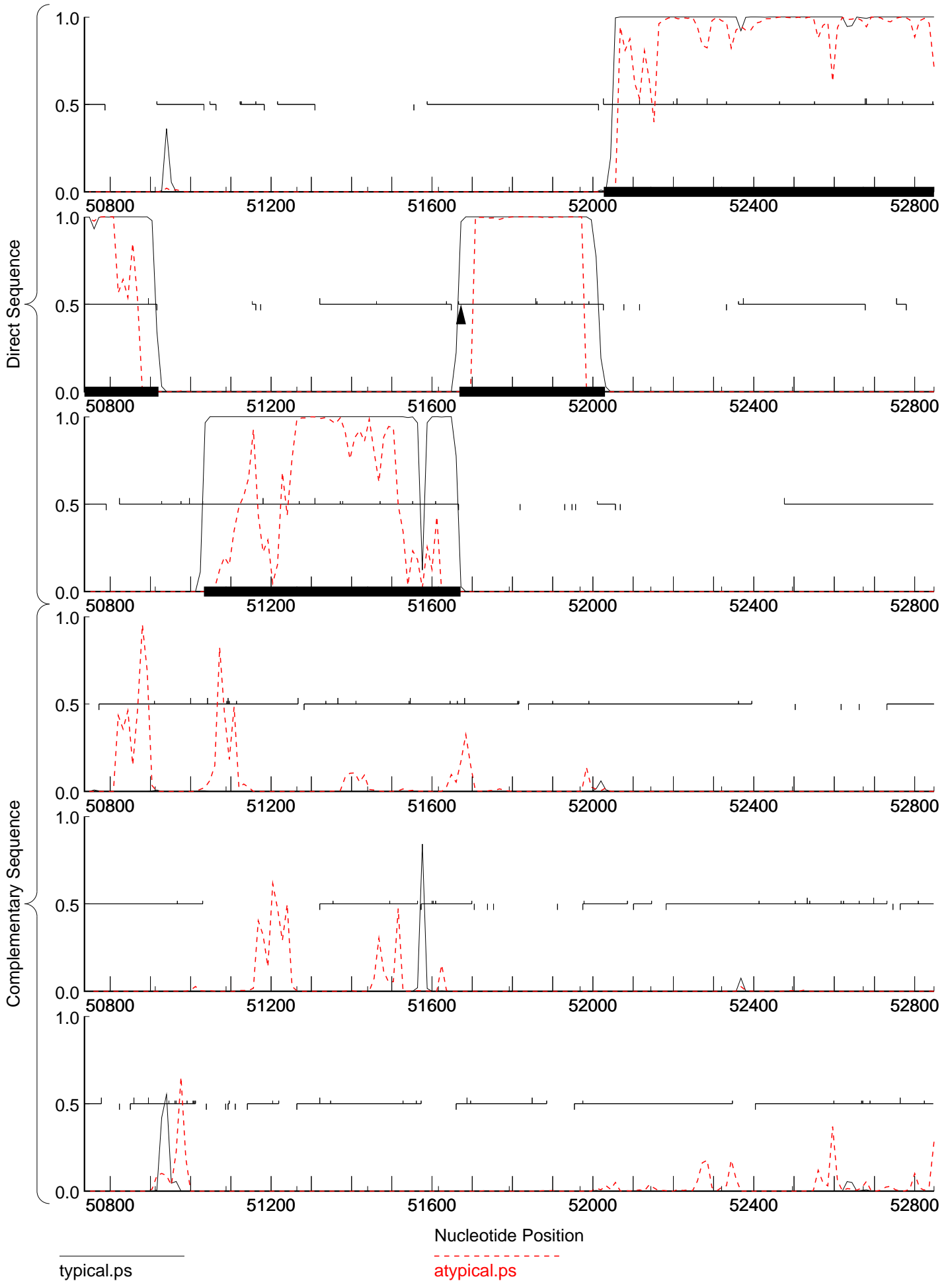


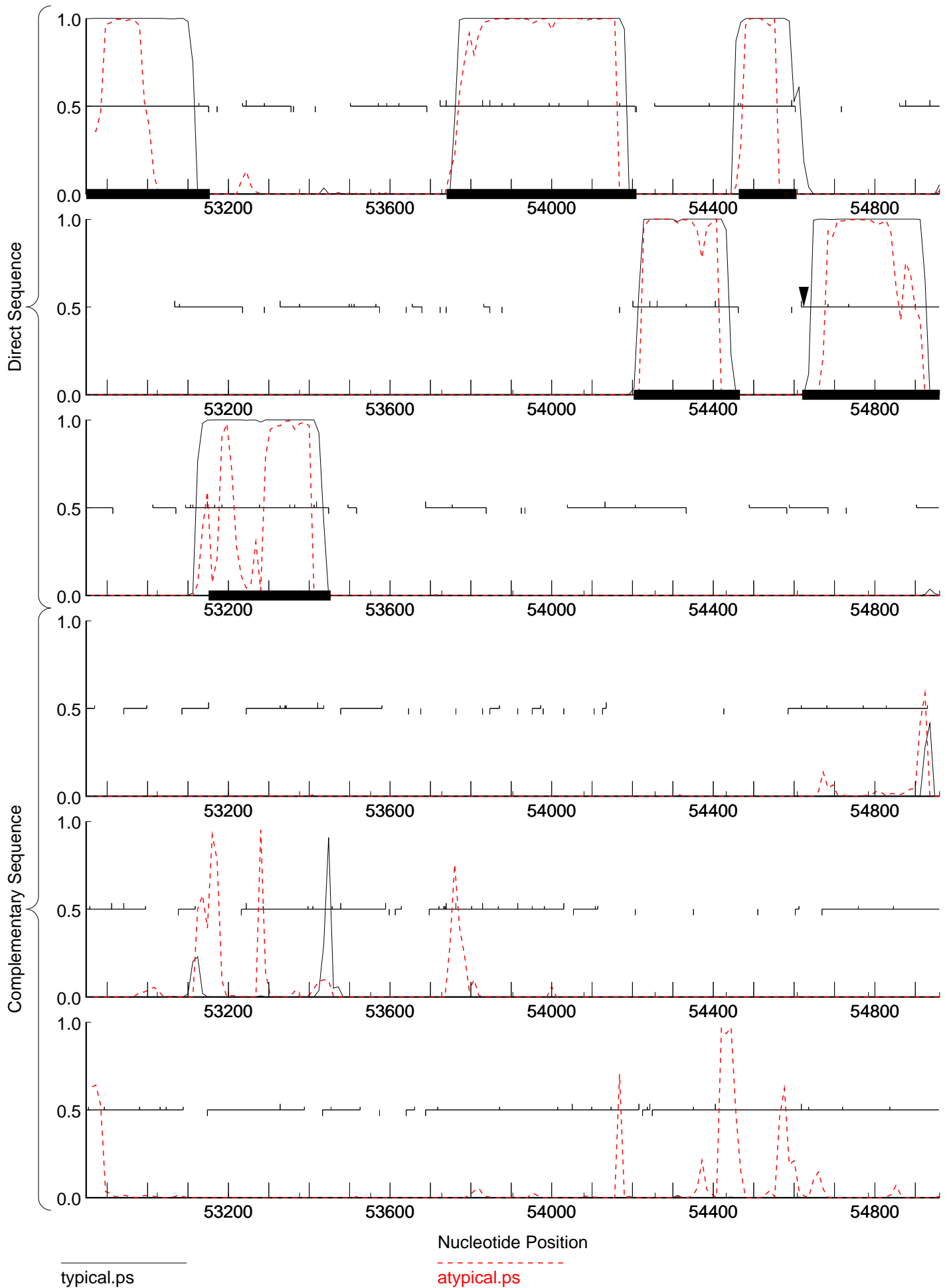
typical.ps

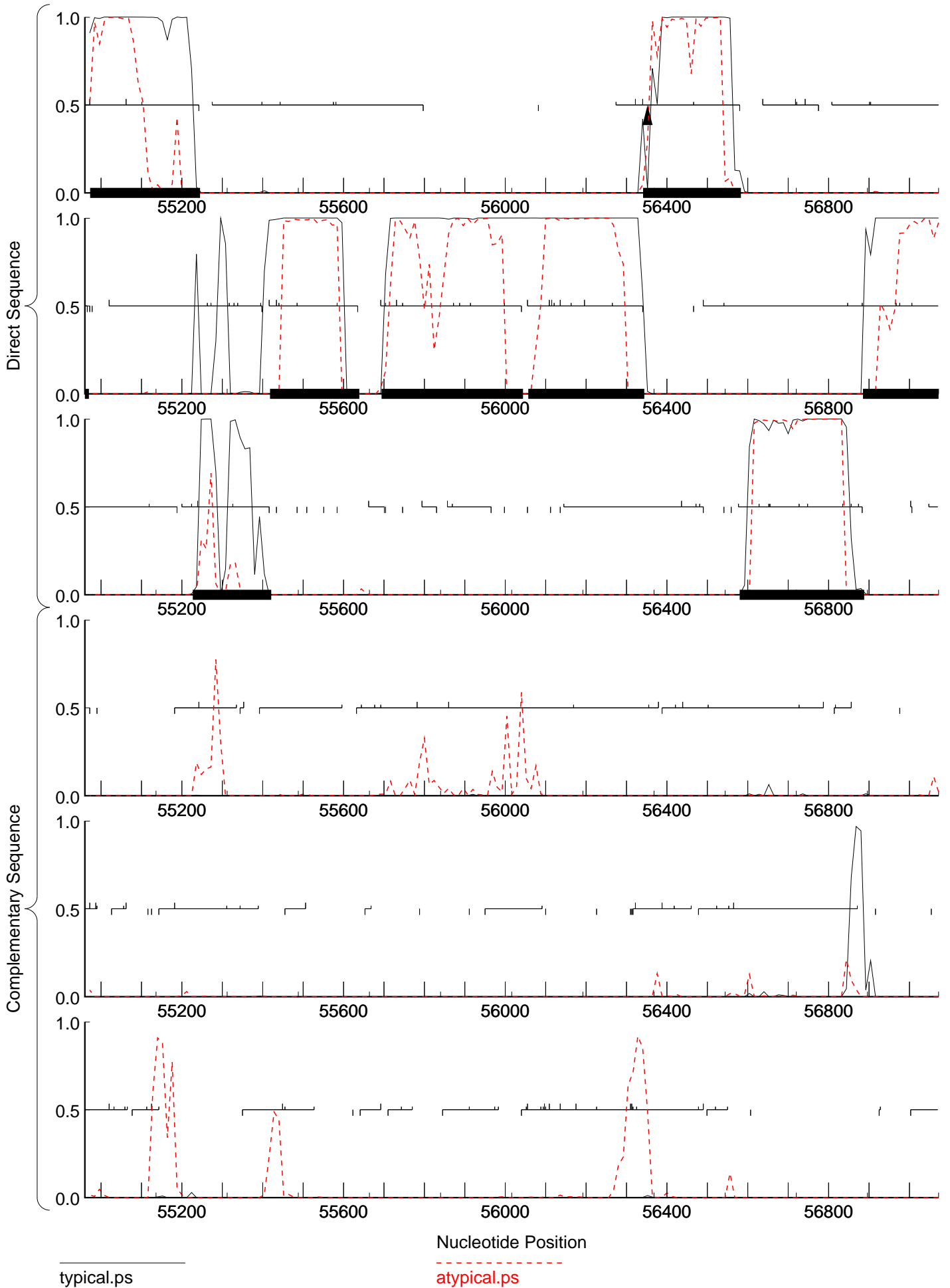
atypical.ps











typical.ps

atypical.ps

