

GeneMark

Version 2.5p (09.08.06)

Copyright 1993 - M. Borodovsky, J. McIninch

PROGRAM INFORMATION

Sequence : Mycobacterium phage Prithvi complete sequence, 60311 bp including 11-base 3' overhang (CTCG)
Analysis Date : 9/21/17 at 2:46:36
Pages : 30
Sequence Length : 60311 bp
GC Content : 66.77%

Window Length : 96 bp
Window Step : 12 bp
Threshold Value : 0.500

PS-Version : 1.2

GeneMark Options : PostScript graph,
Mark ORFs / splice sites,
List ORFs,
List regions and/or splice sites,

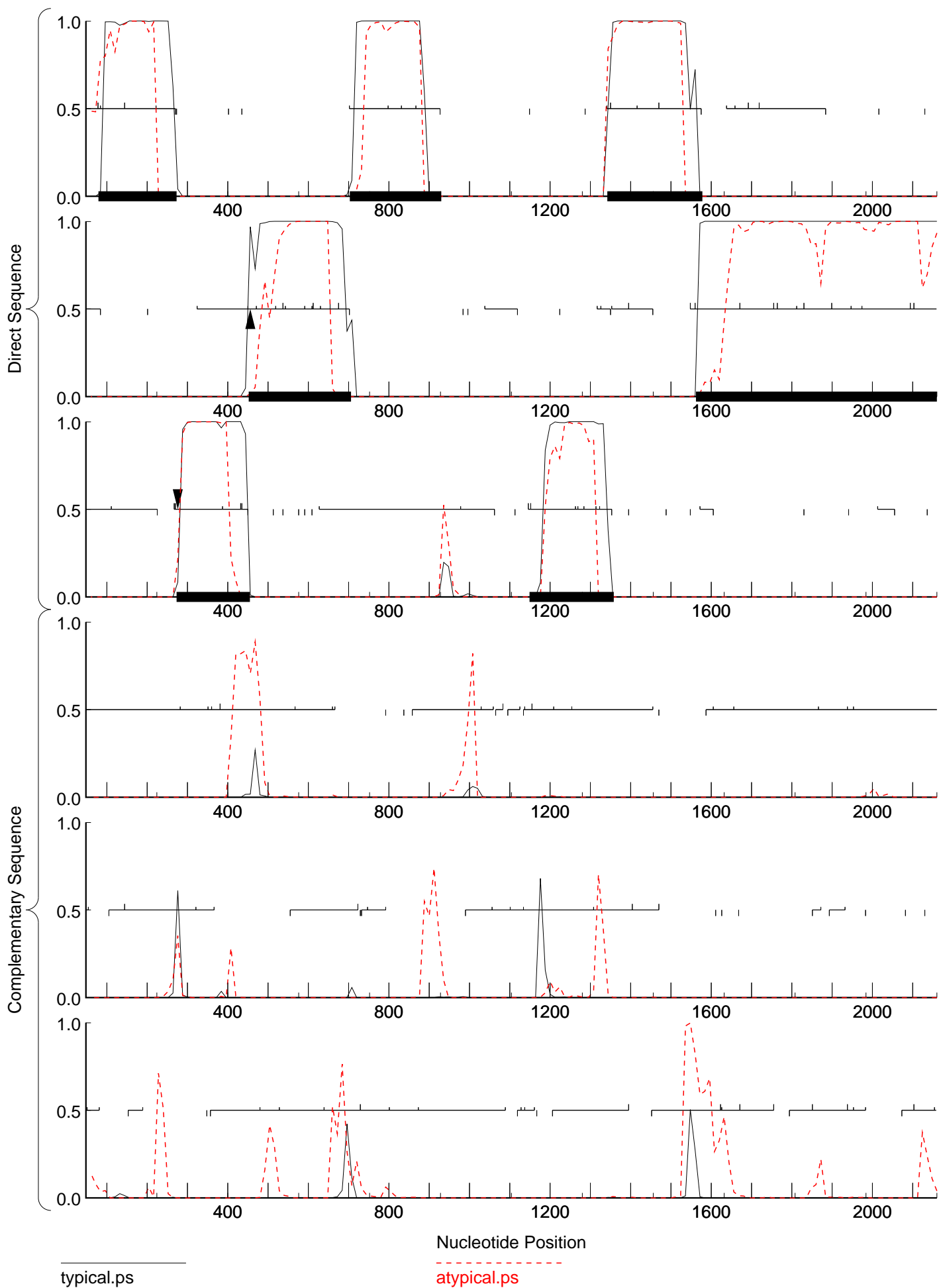
Matrix notes & comments

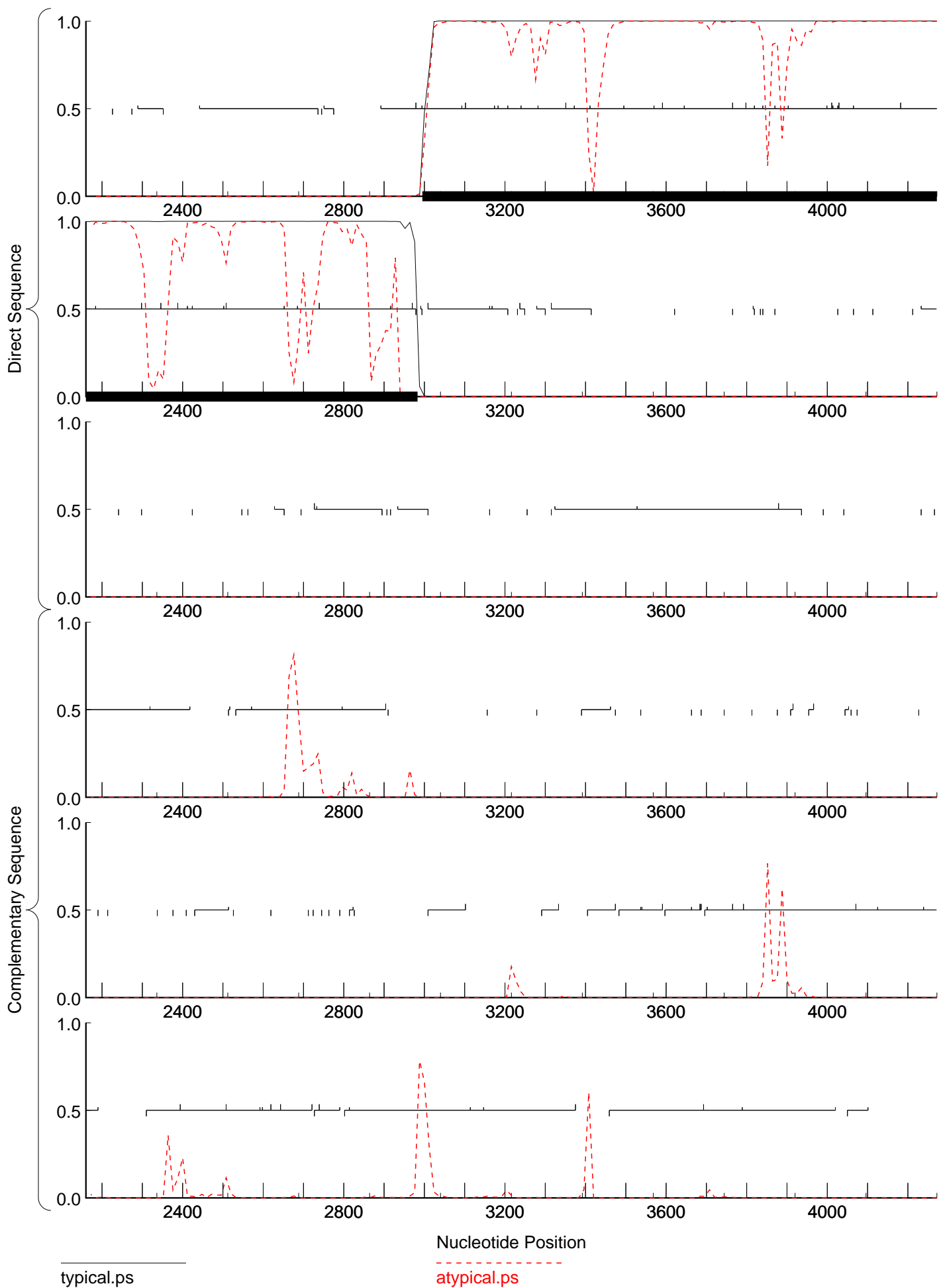
Training set derived by GeneMarkS, 4.30 October 2014
Thu Sep 21 02:46:36 2017

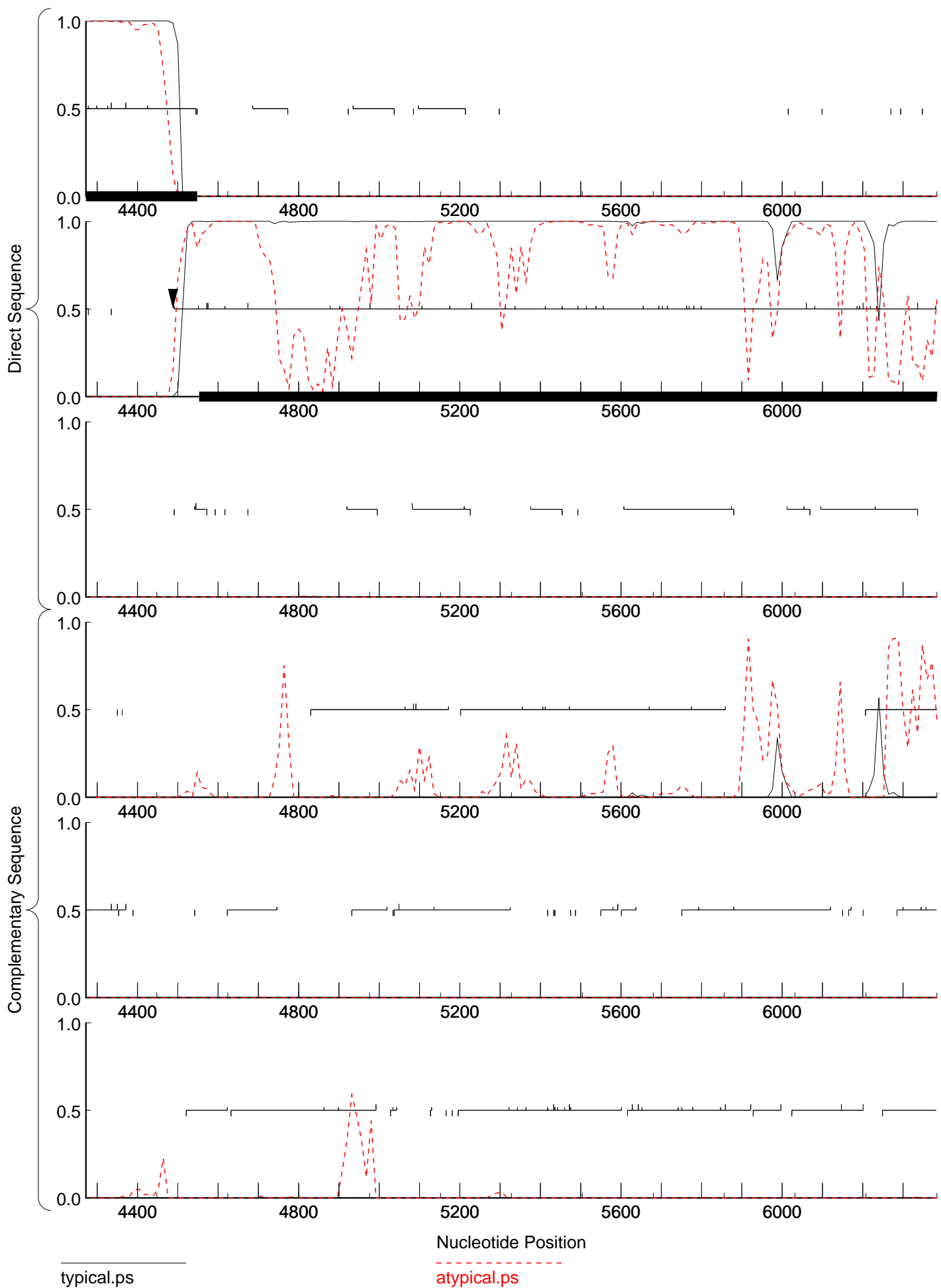
MATRIX INFORMATION

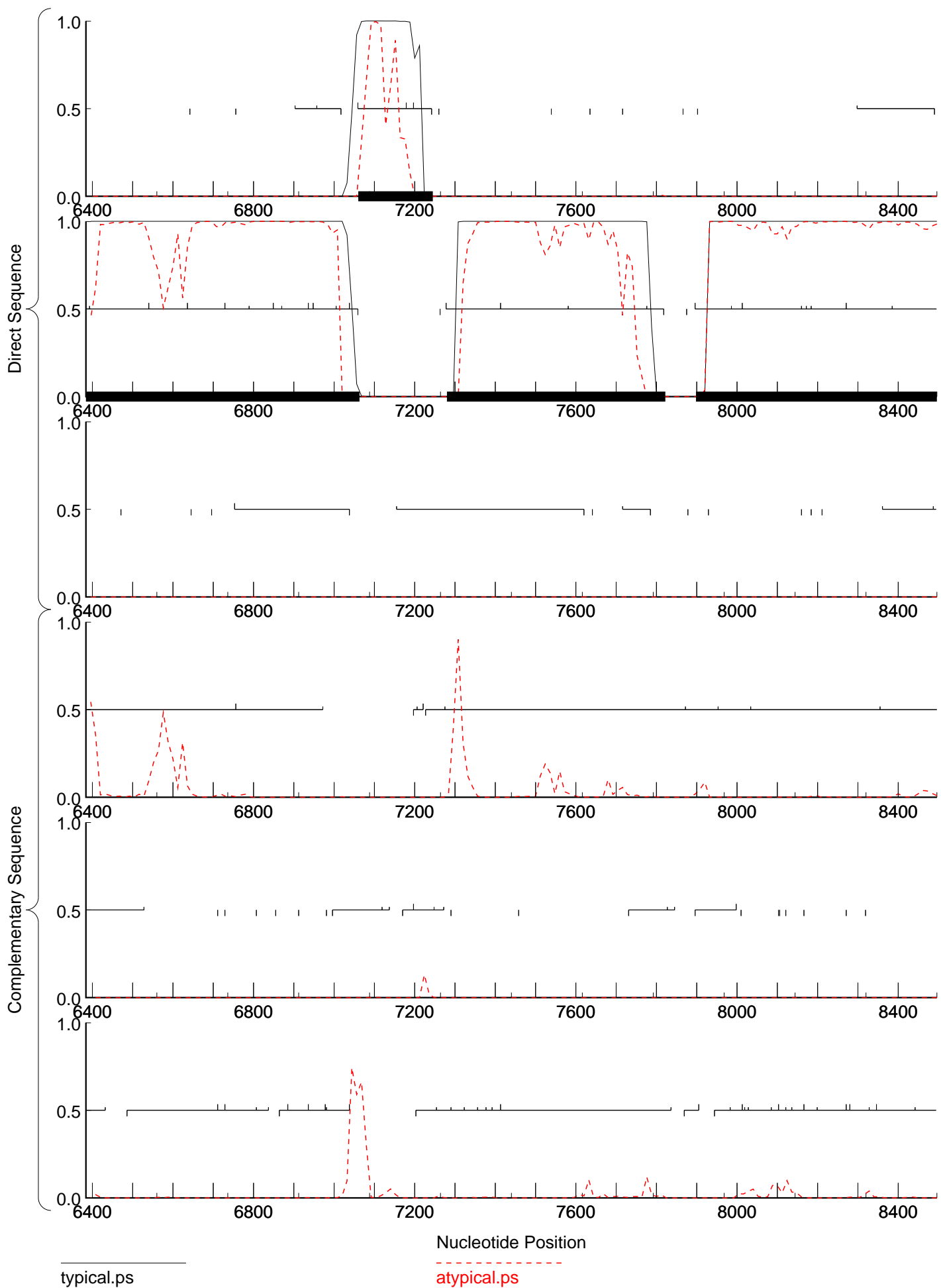
Matrix : -
Author : -
Order : 4

Send questions / comments to:
Dr. M. Borodovsky
Georgia Institute of Technology
School of Biology
Atlanta, GA 30332-0230





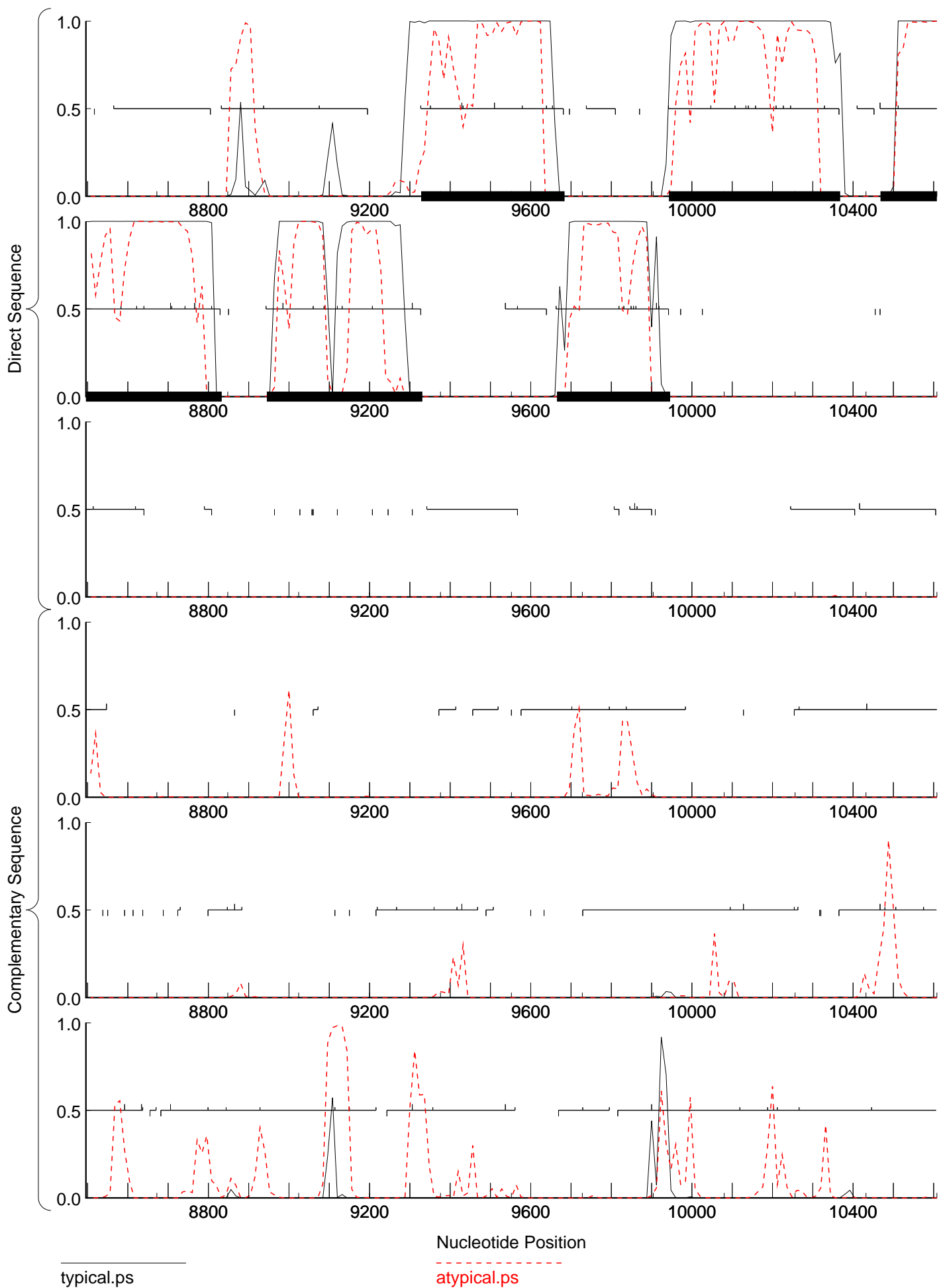




typical.ps

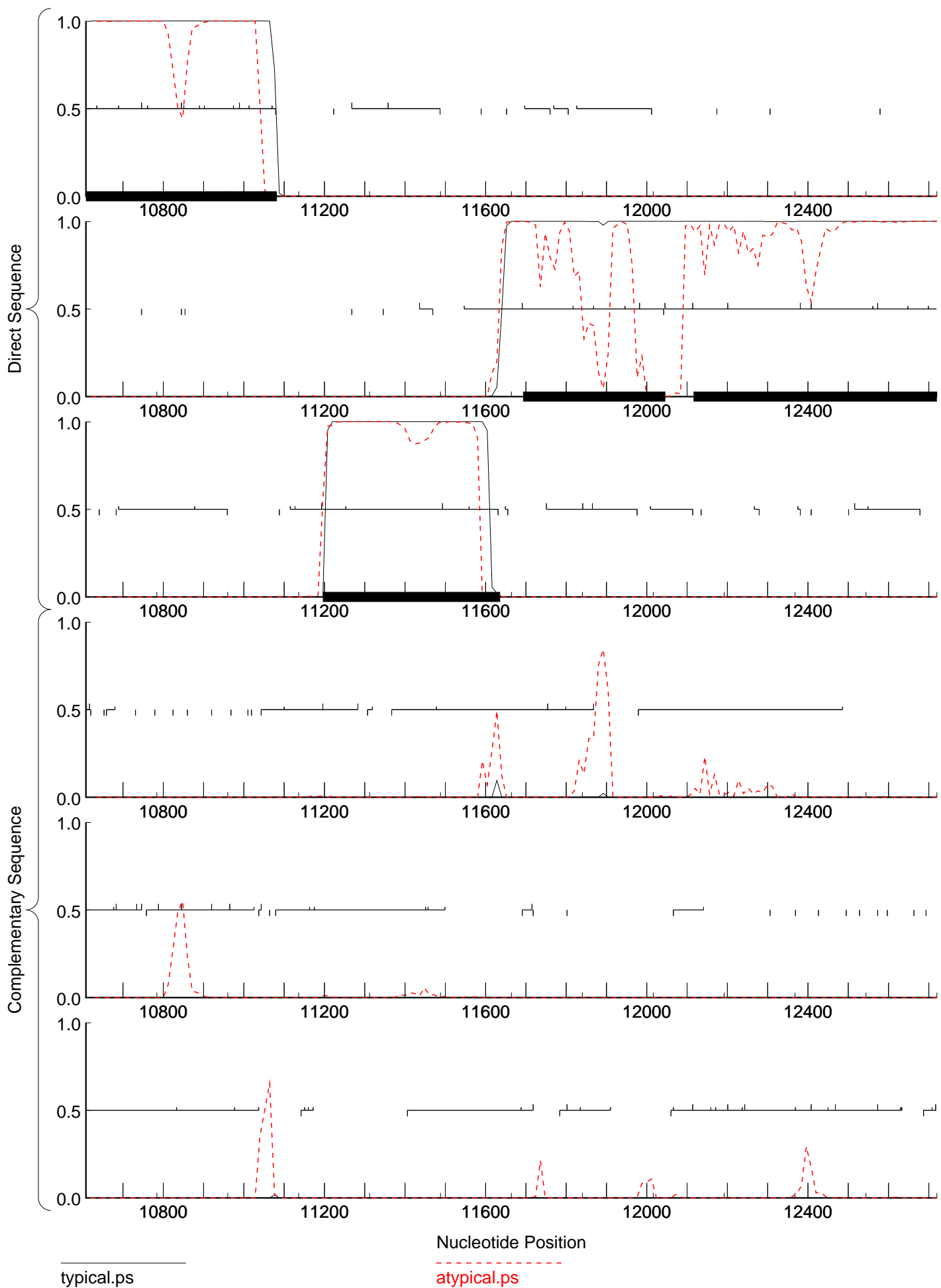
atypical.ps

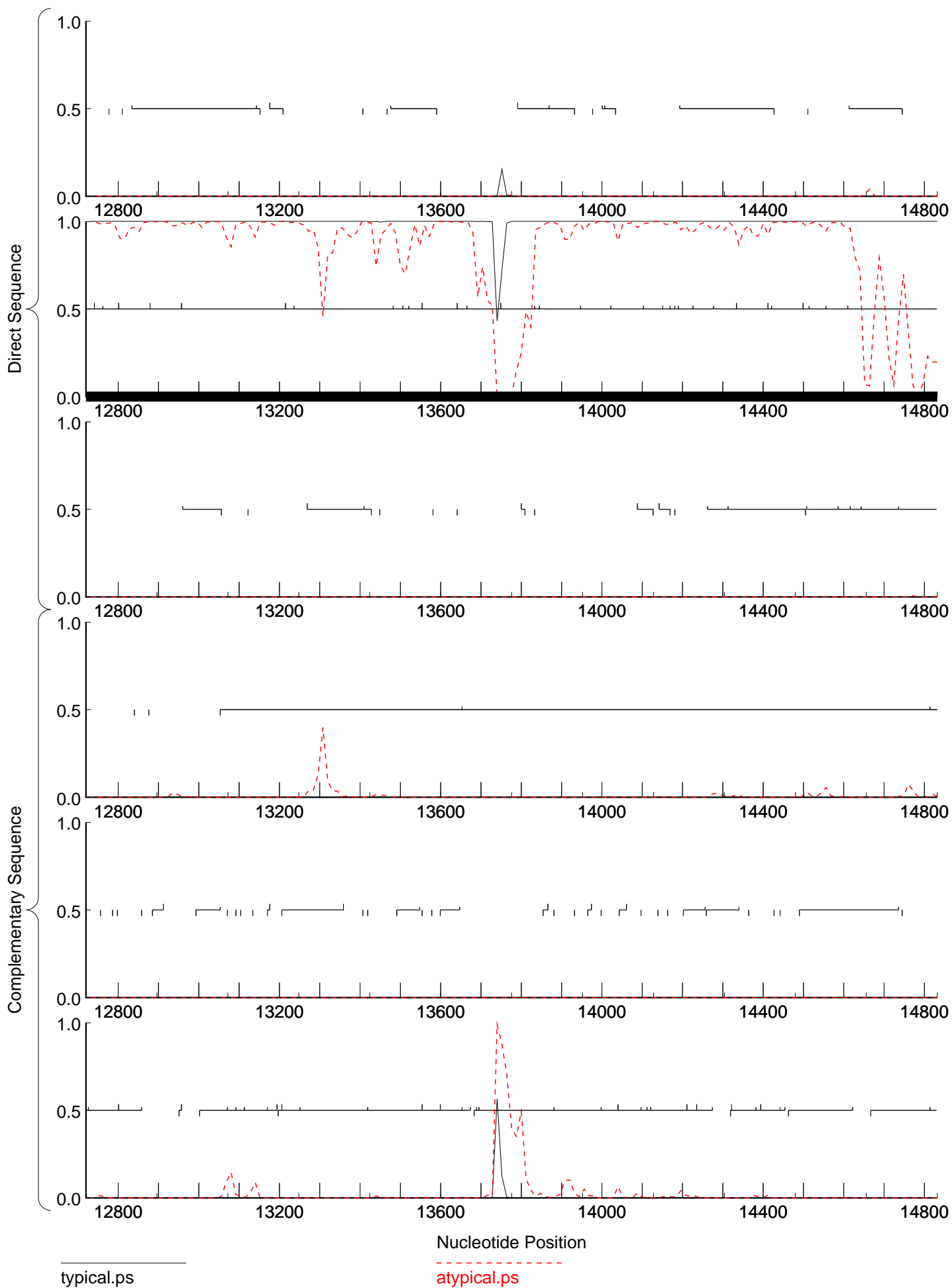
GeneMark.hmm prediction



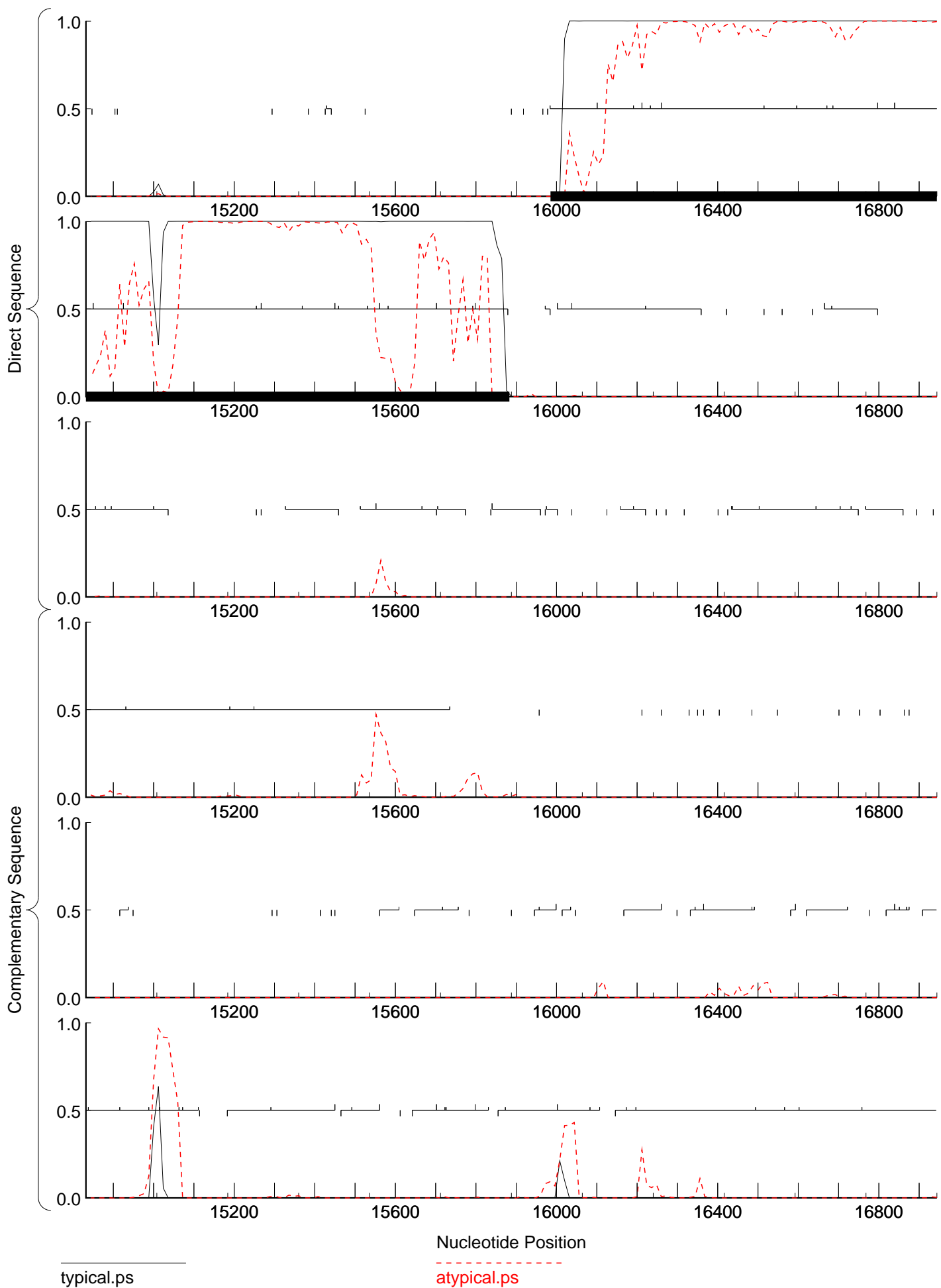
typical.ps

atypical.ps



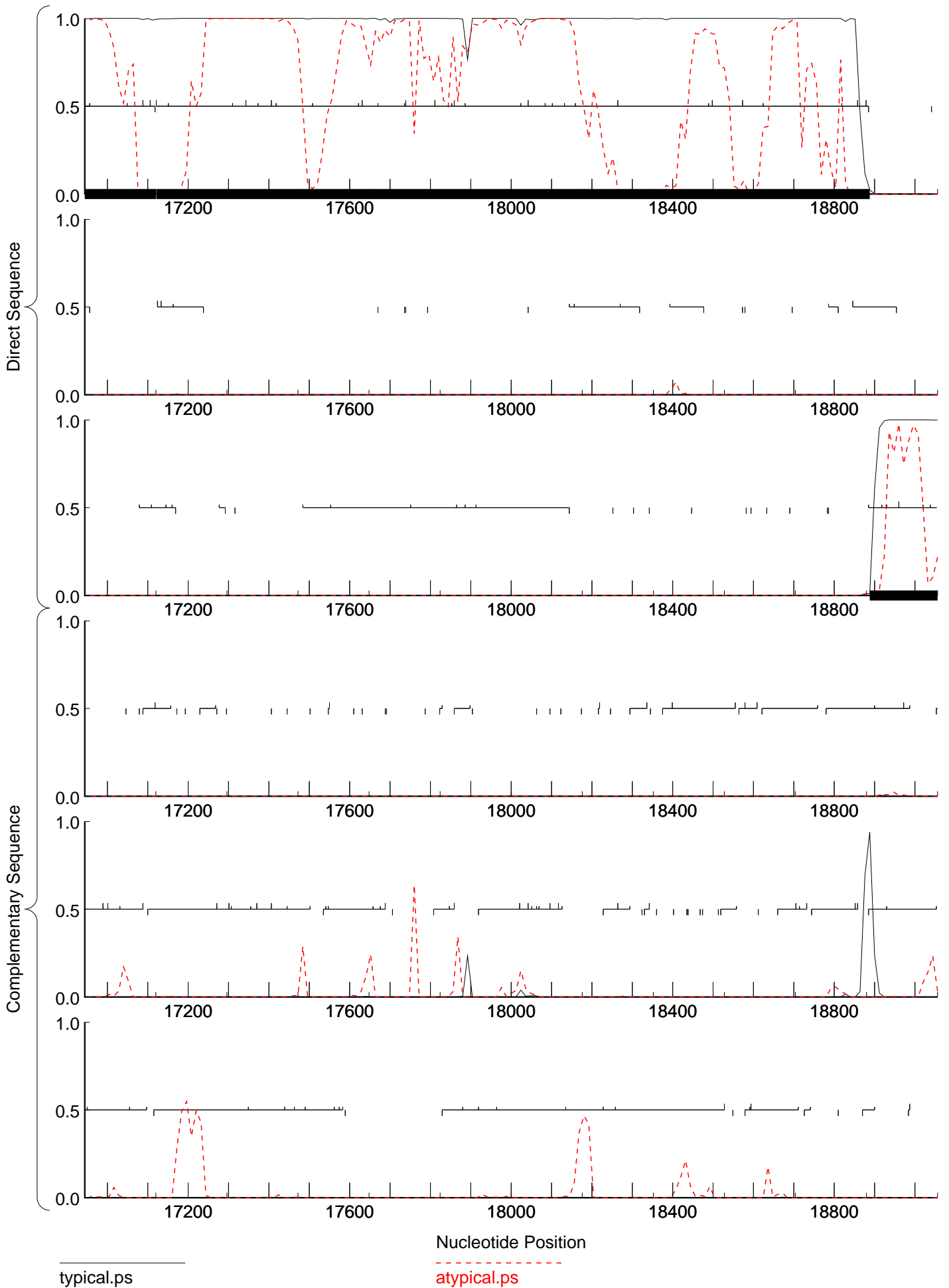


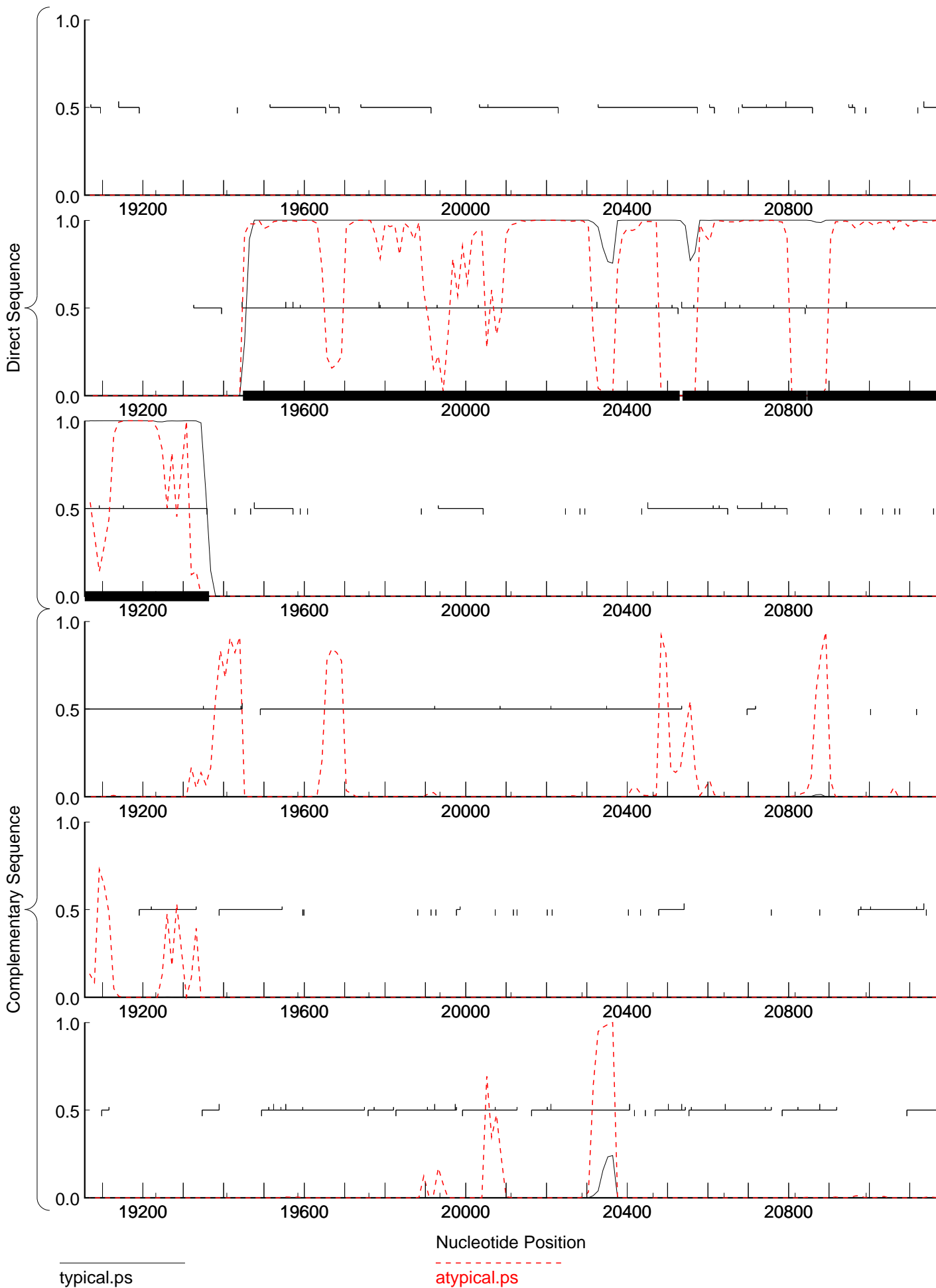
complete sequence, 60311 bp including 11-base 3' overhang (CTCGTAGGCAT), Cluster K1, Order 4, Window 96, Step 12, 9/30
complete sequence, 60311 bp including 11-base 3' overhang (CTCGTAGGCAT), Cluster K1, Order 2, Window 96, Step 12, 9/30

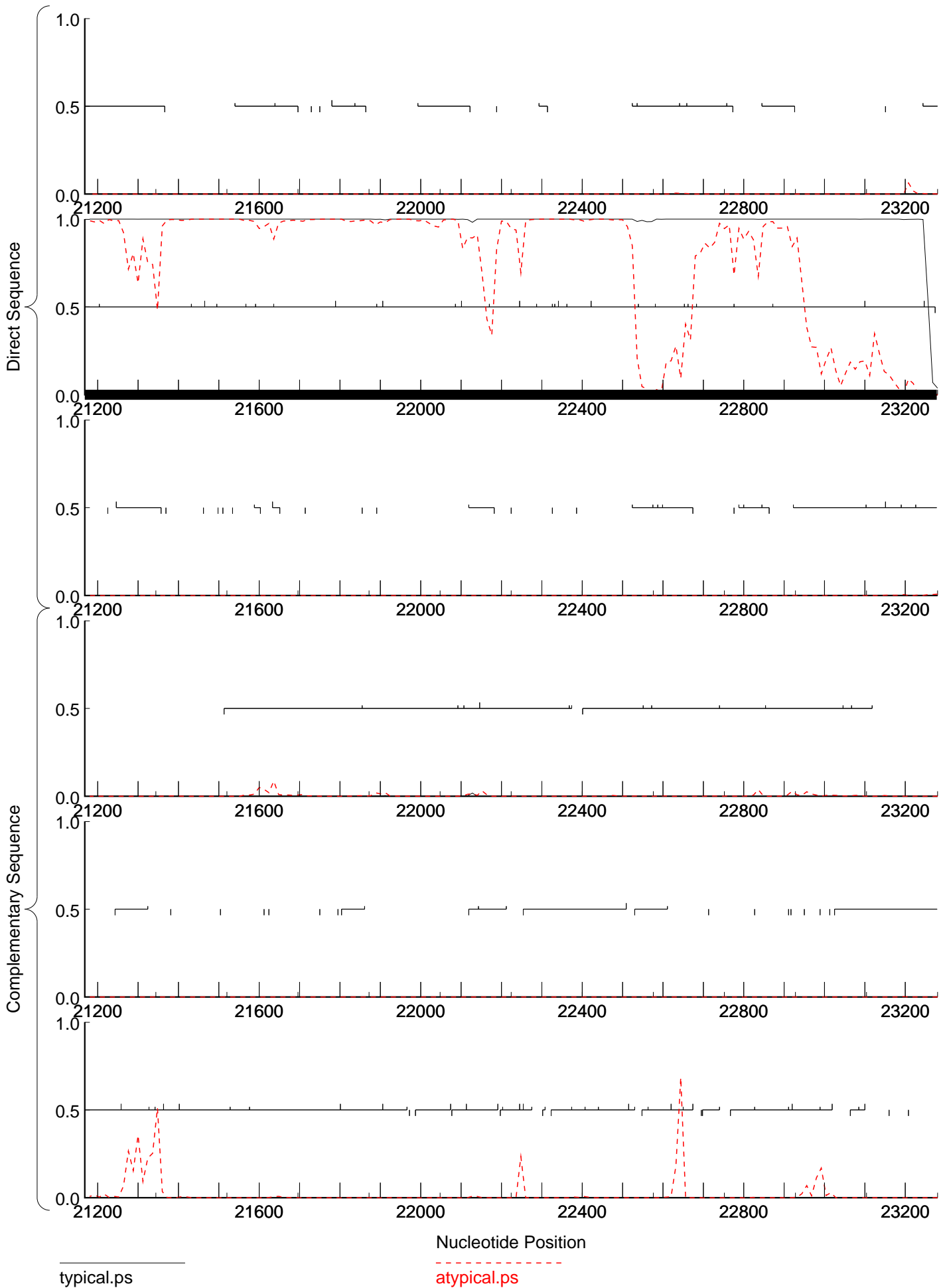


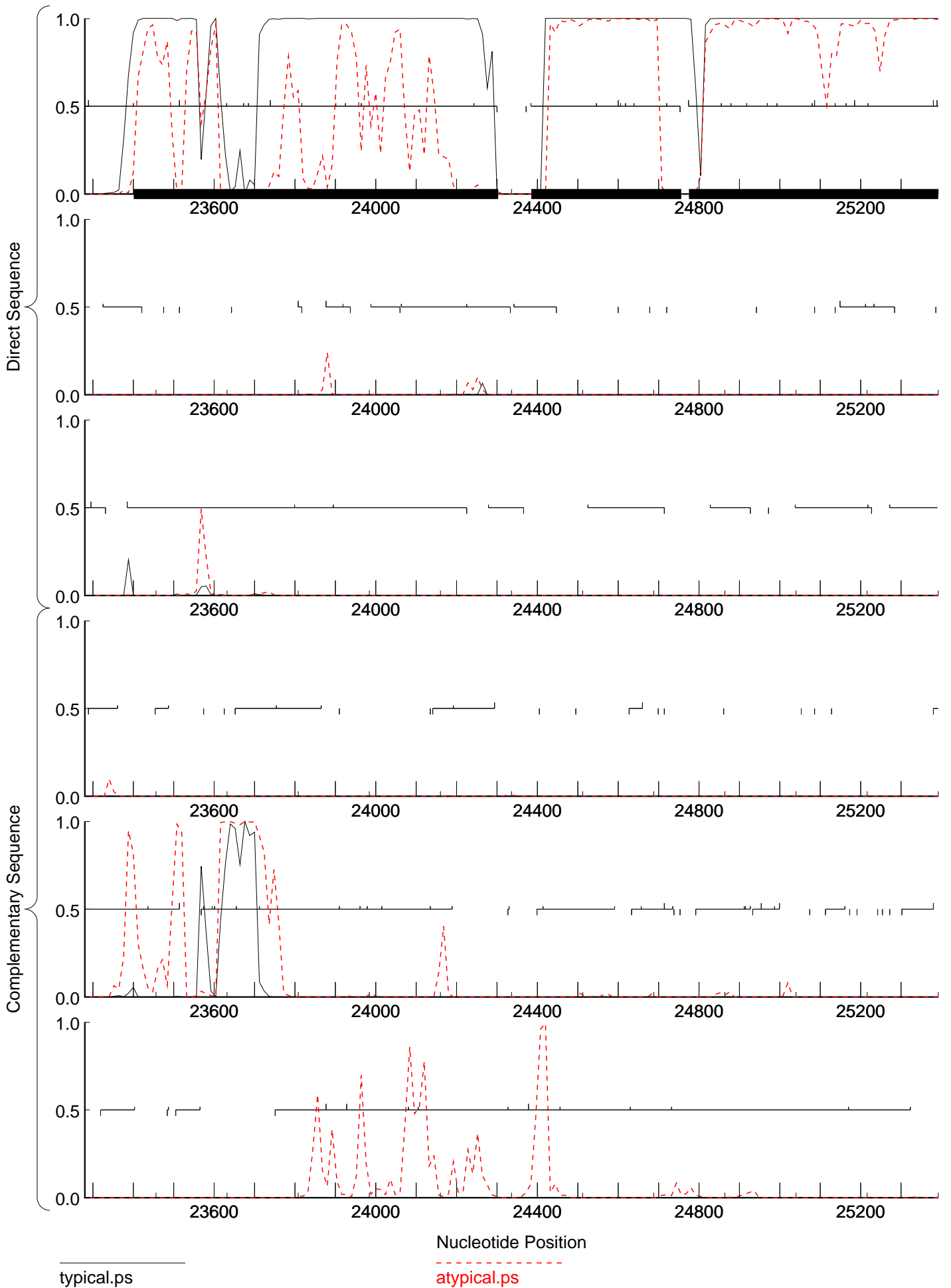
typical.ps

atypical.ps



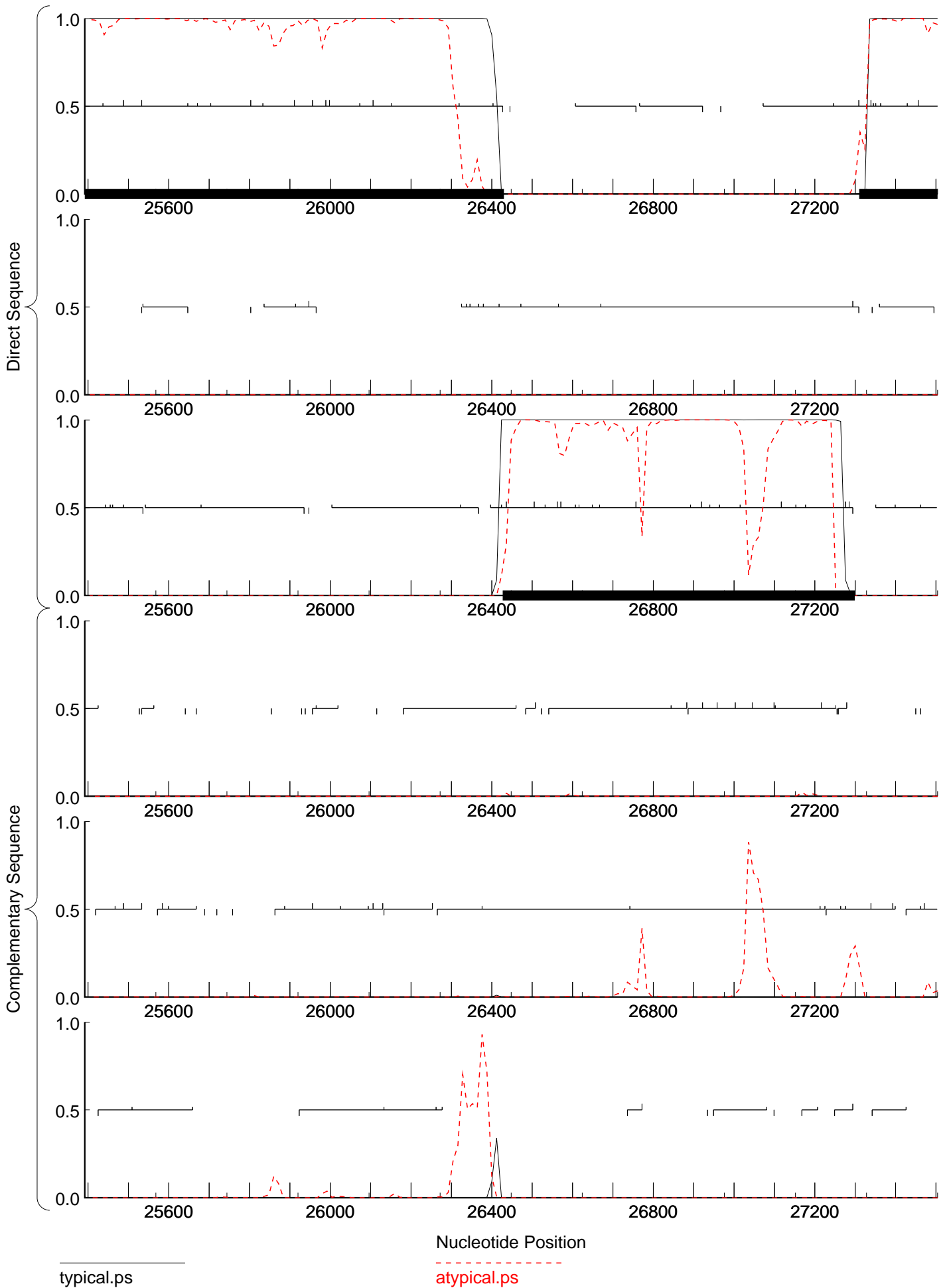


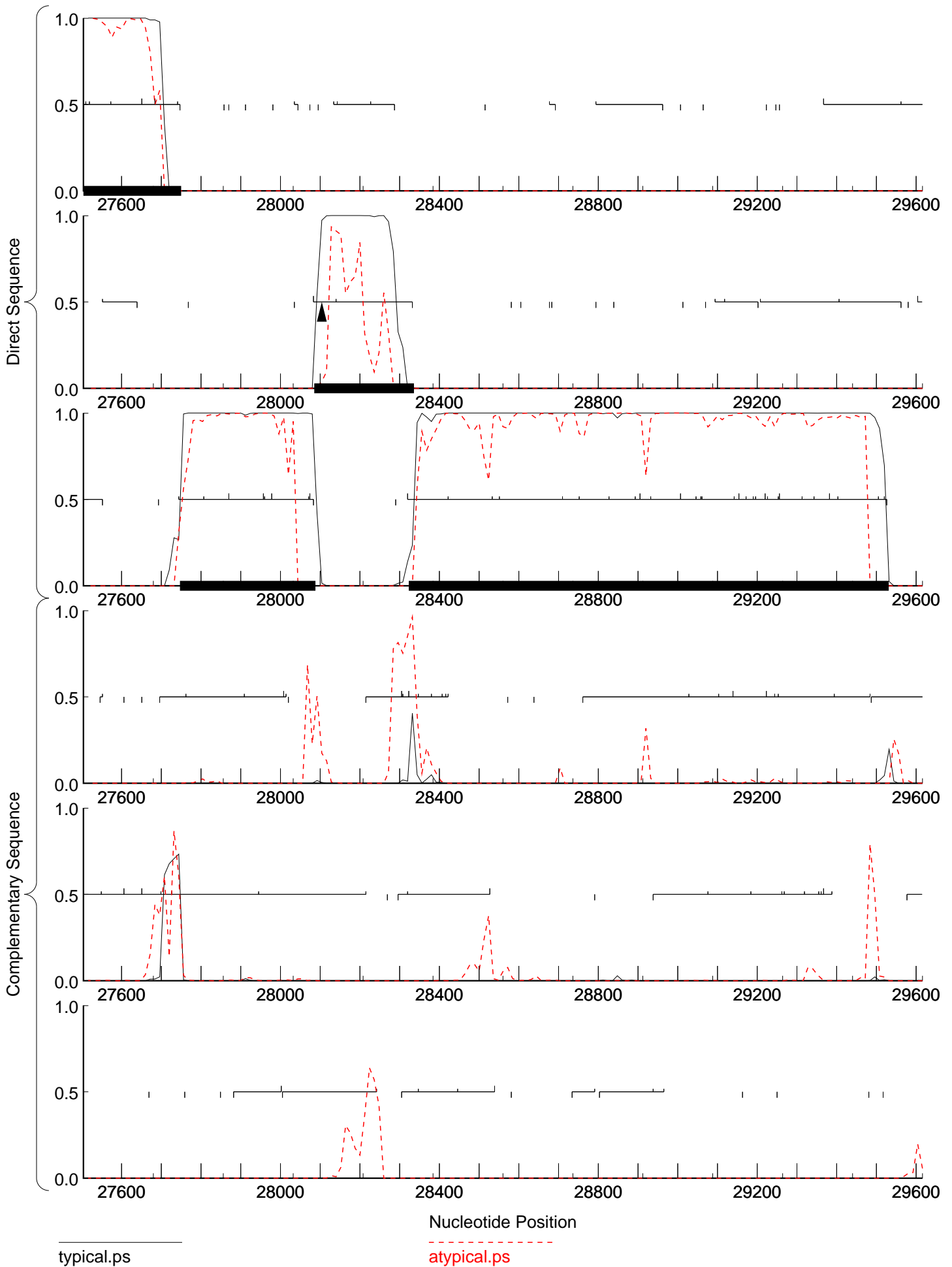


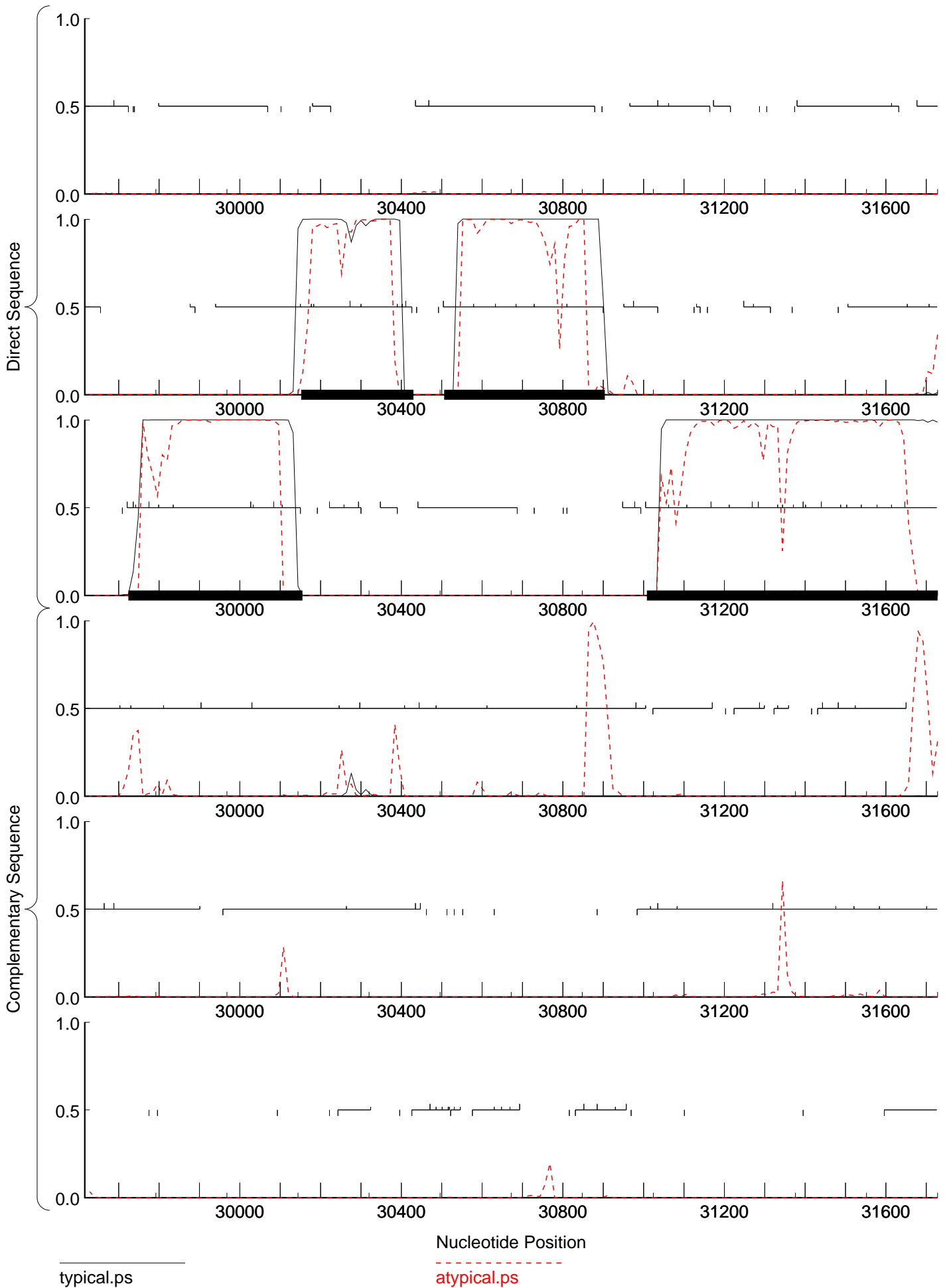


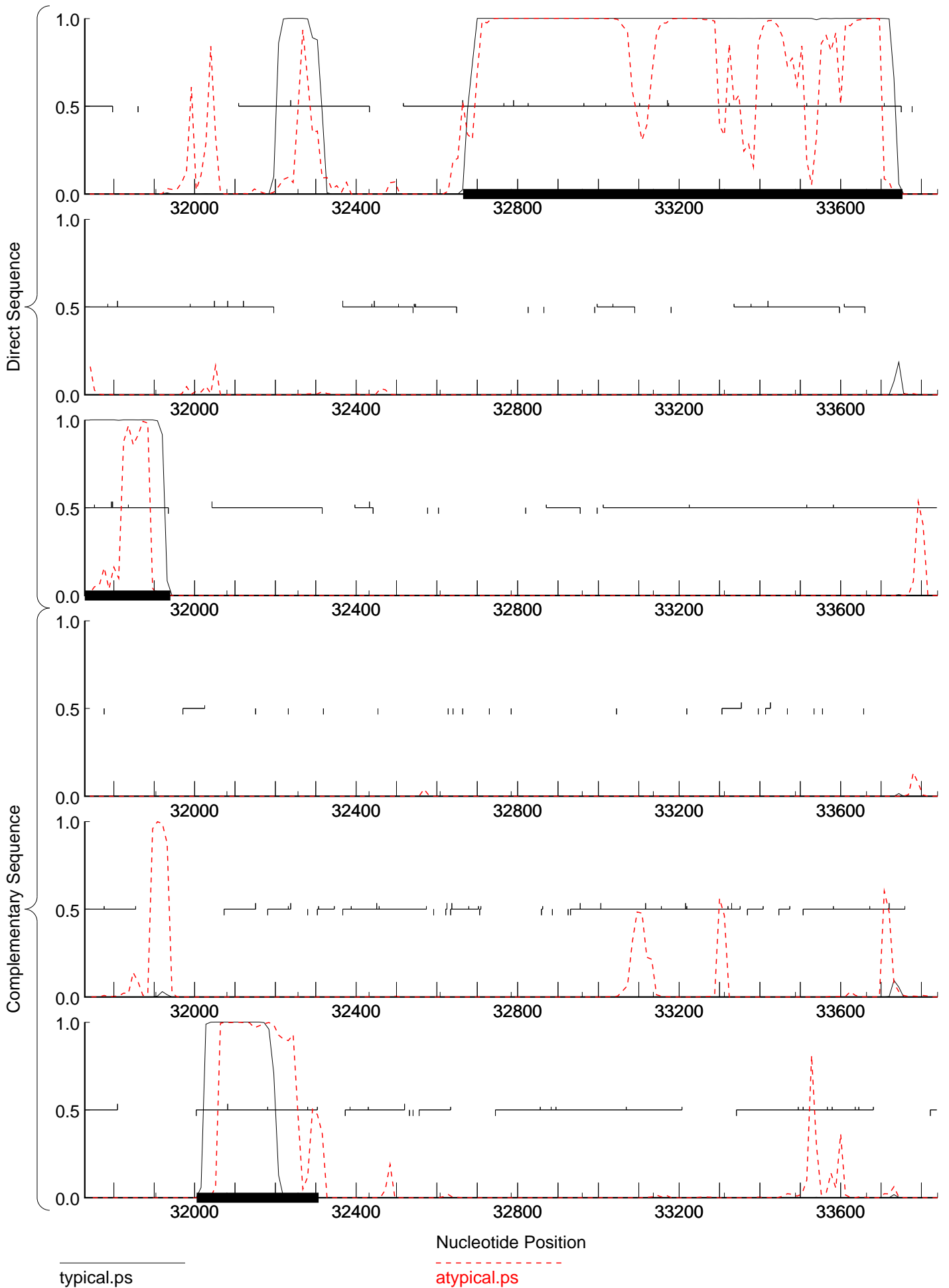
typical.ps

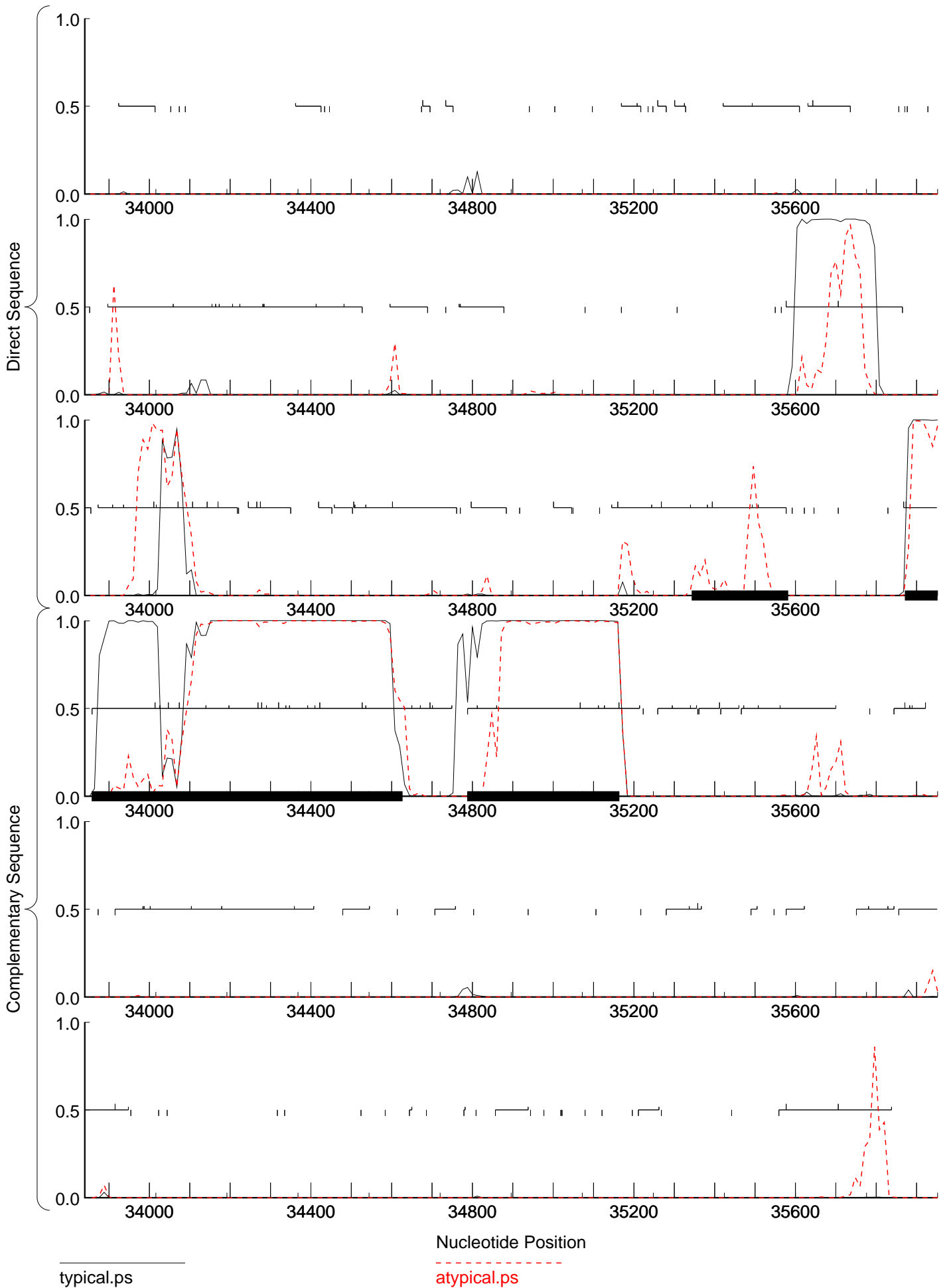
atypical.ps

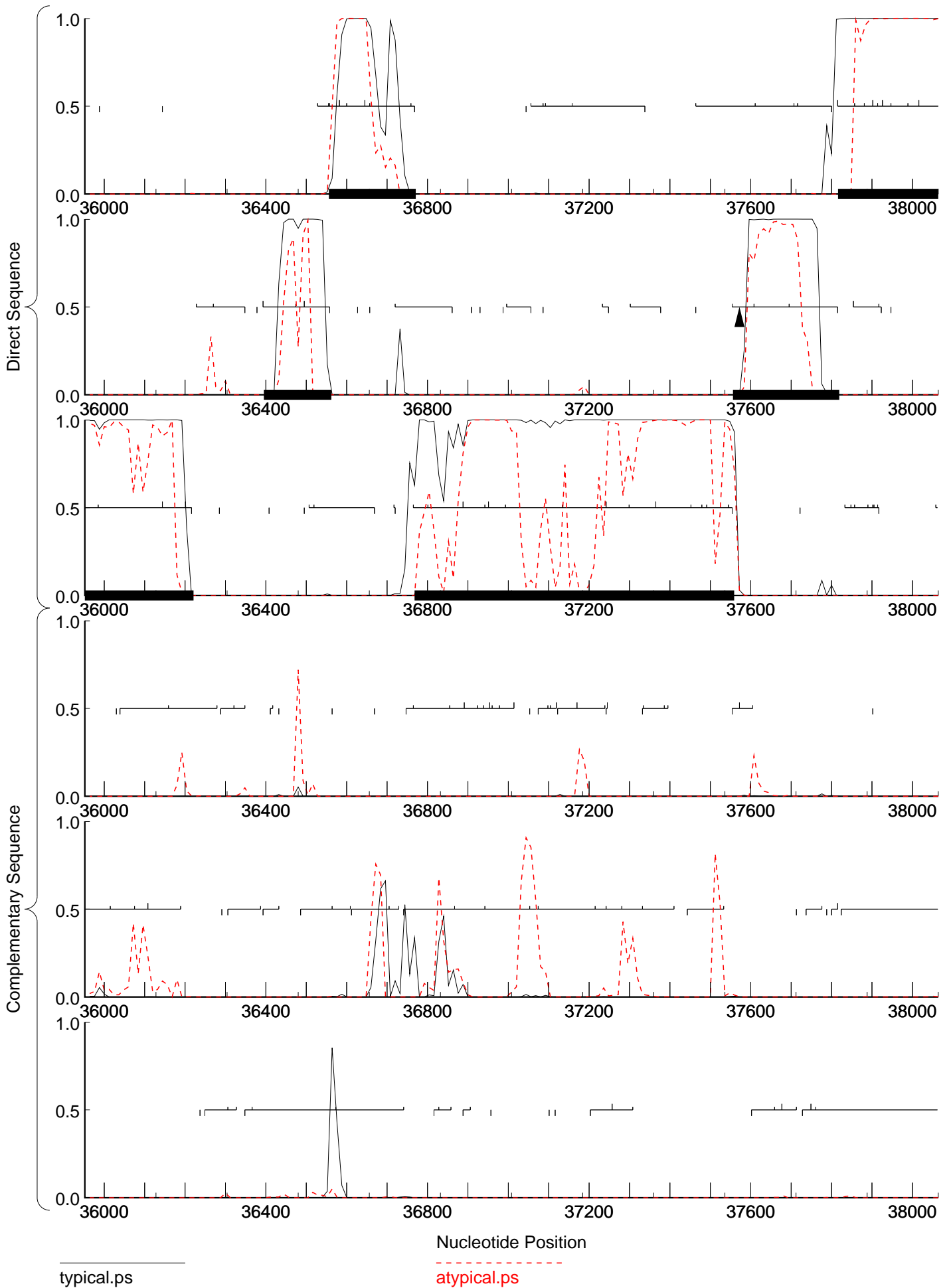


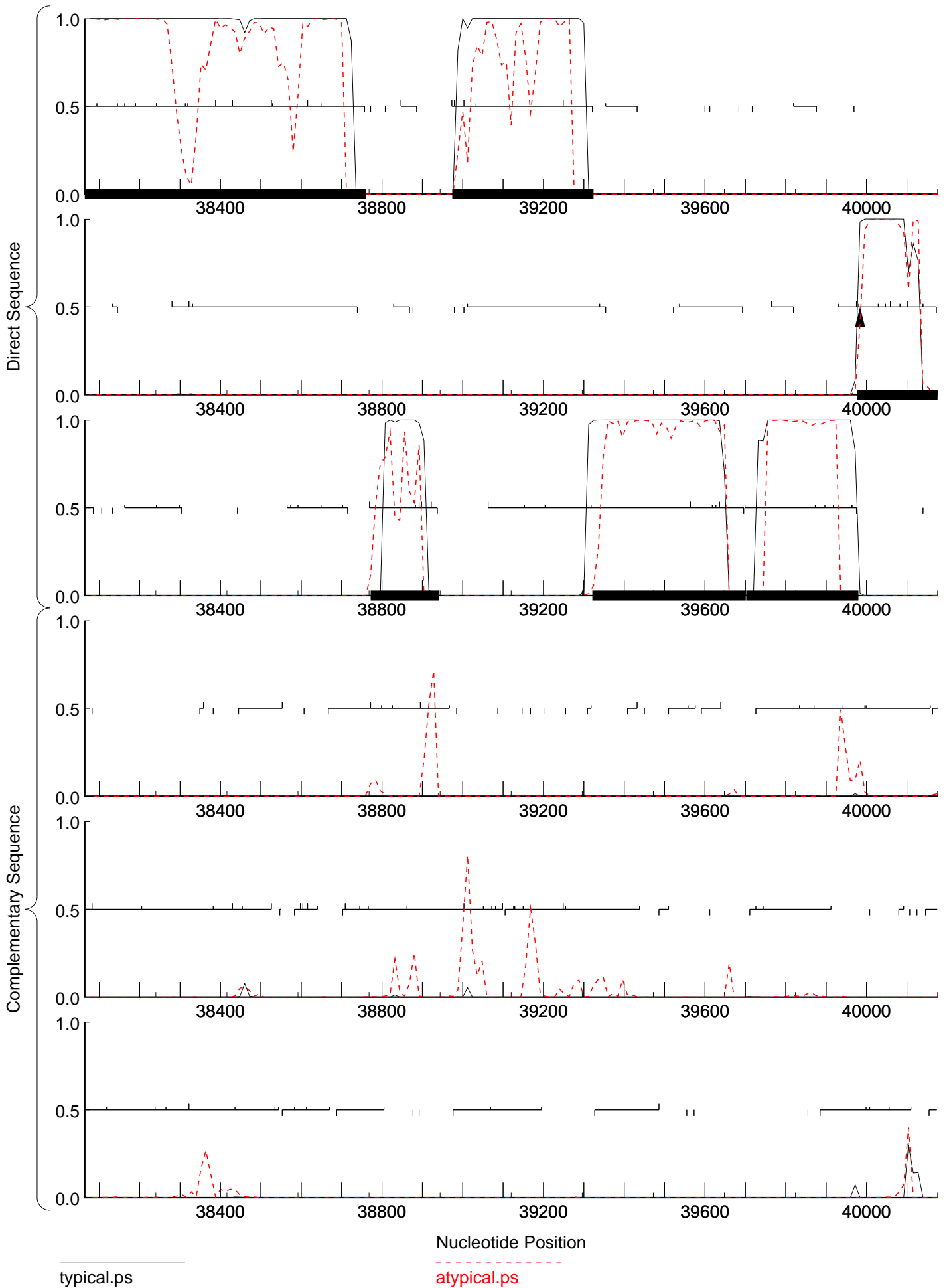


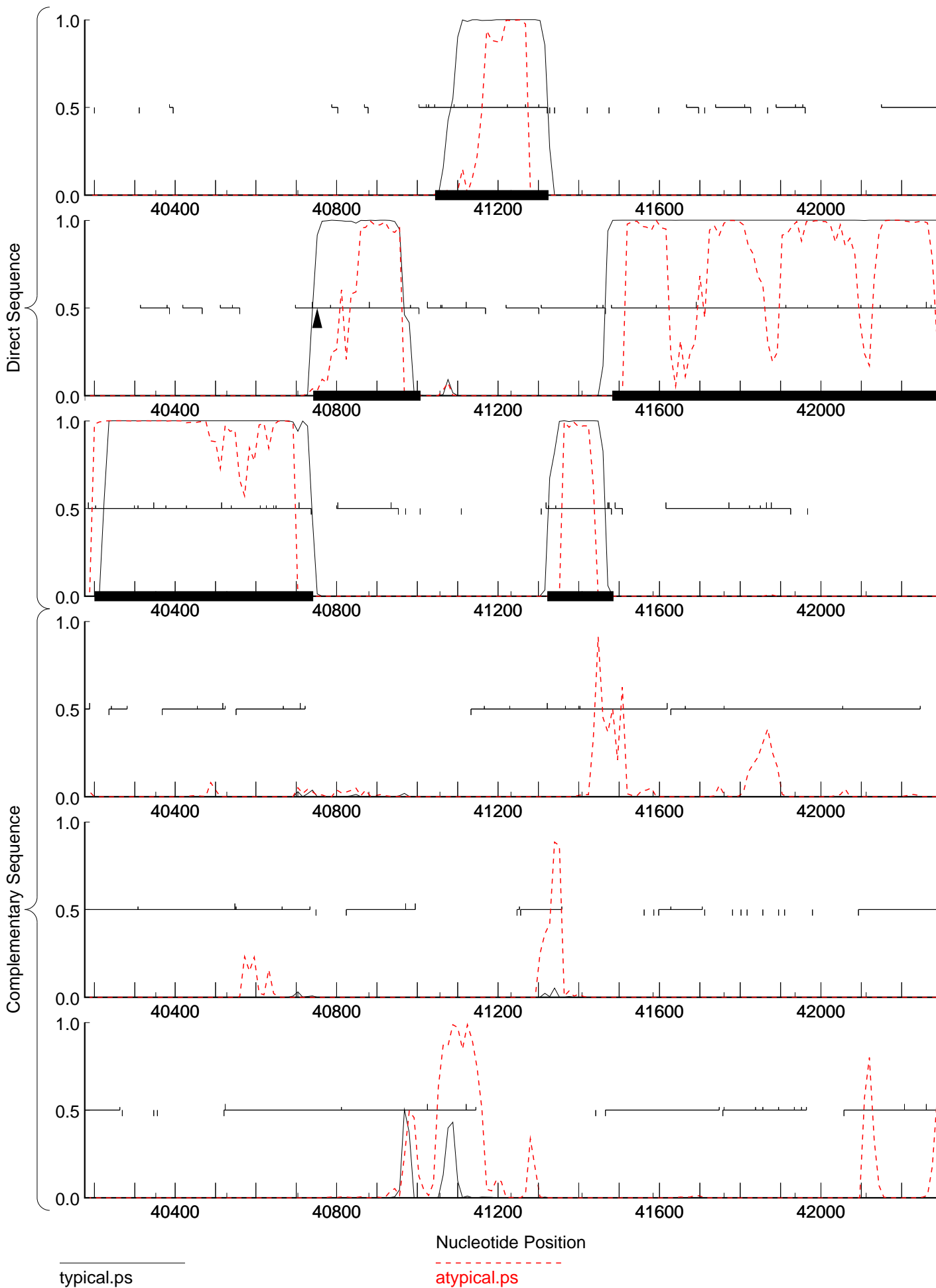






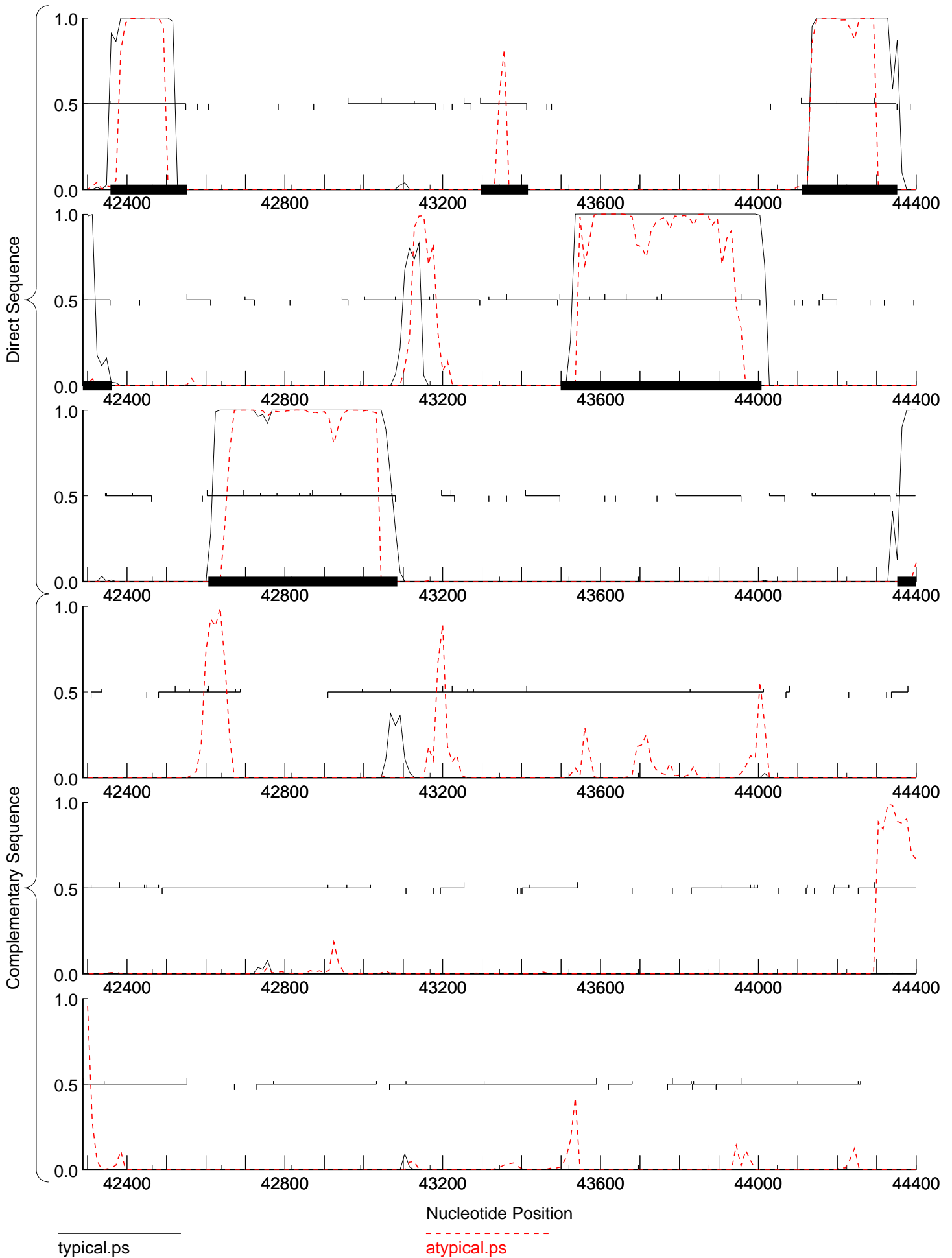


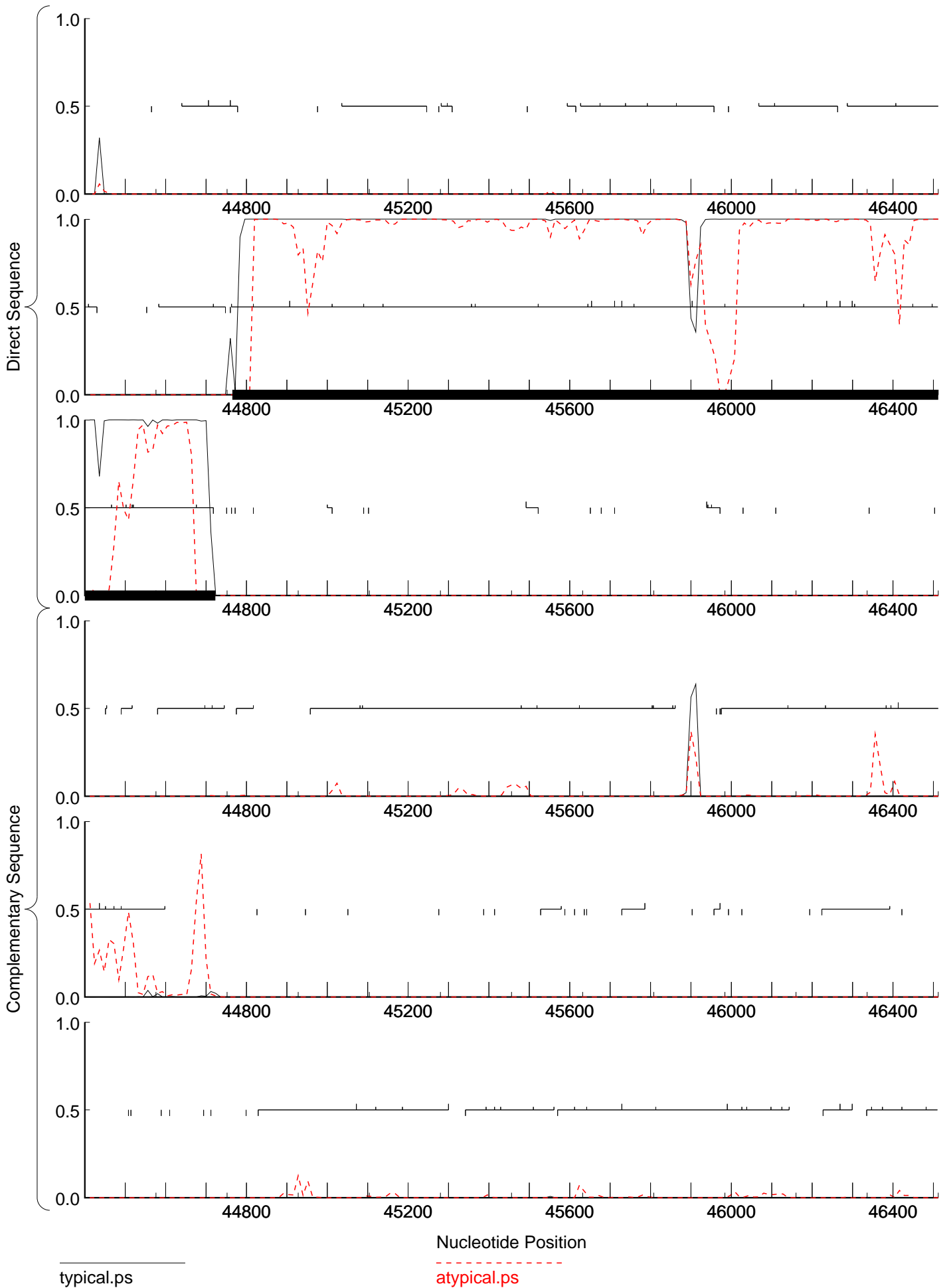


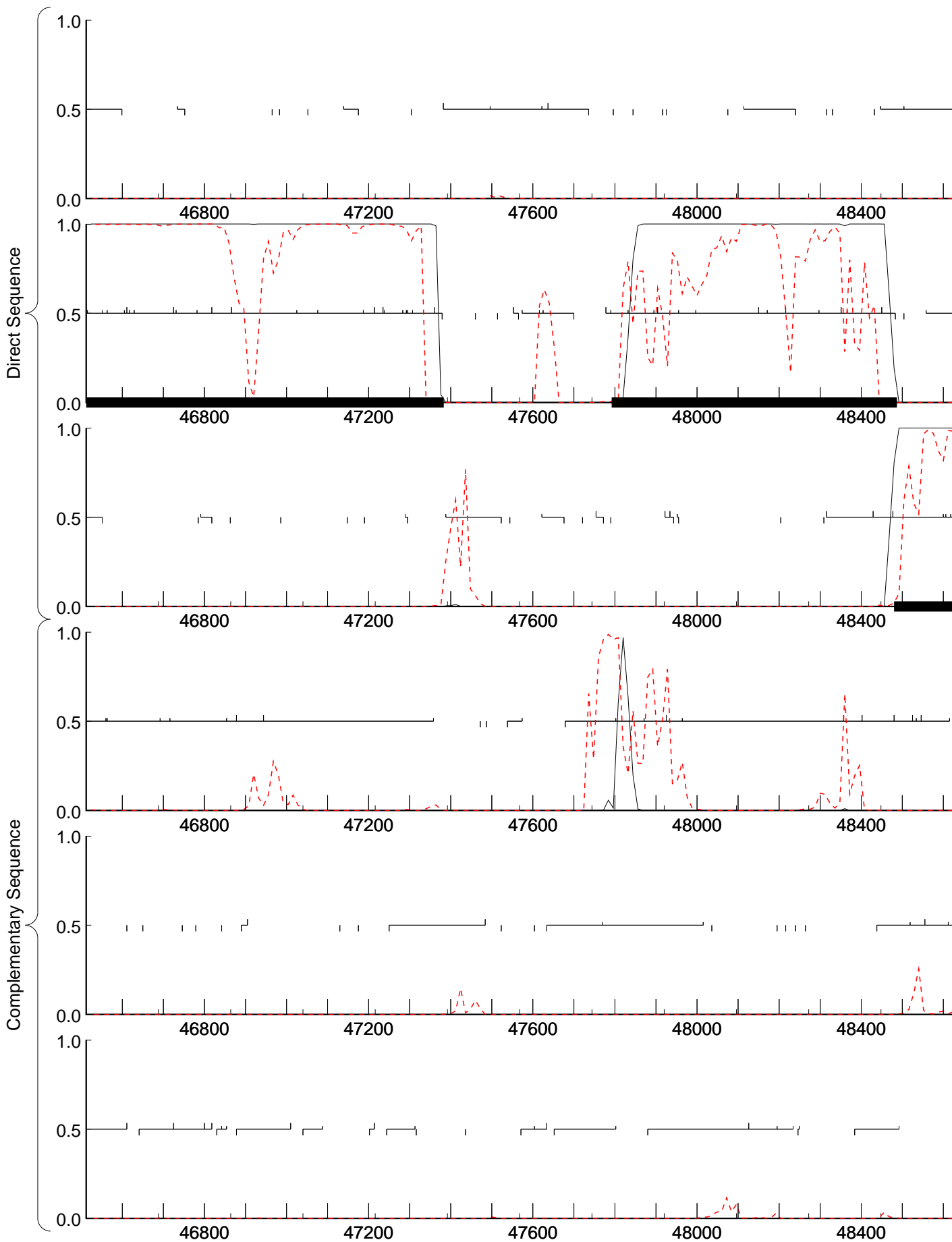


typical.ps

atypical.ps







typical.ps

atypical.ps

