

GeneMark

Version 2.5p (09.08.06)

Copyright 1993 - M. Borodovsky, J. McIninch

PROGRAM INFORMATION

Sequence : Gordonia phage Fairfaxidum complete sequence, 50187 bp including 10-base 3' overhang (TCGCC
Analysis Date : 9/21/17 at 4:42:15
Pages : 25
Sequence Length : 50187 bp
GC Content : 66.58%

Window Length : 96 bp
Window Step : 12 bp
Threshold Value : 0.500

PS-Version : 1.2

GeneMark Options : PostScript graph,
Mark ORFs / splice sites,
List ORFs,
List regions and/or splice sites,

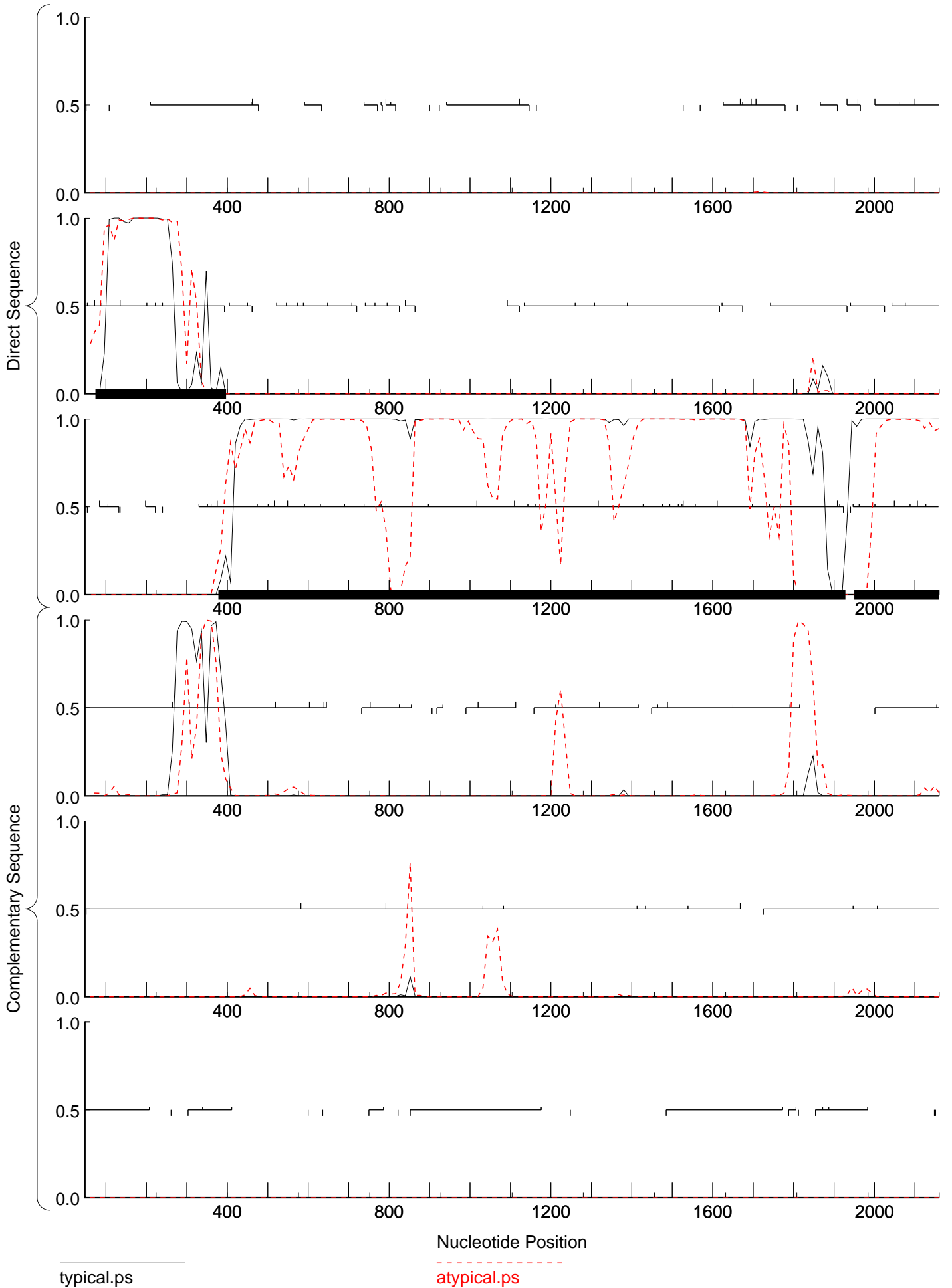
Matrix notes & comments

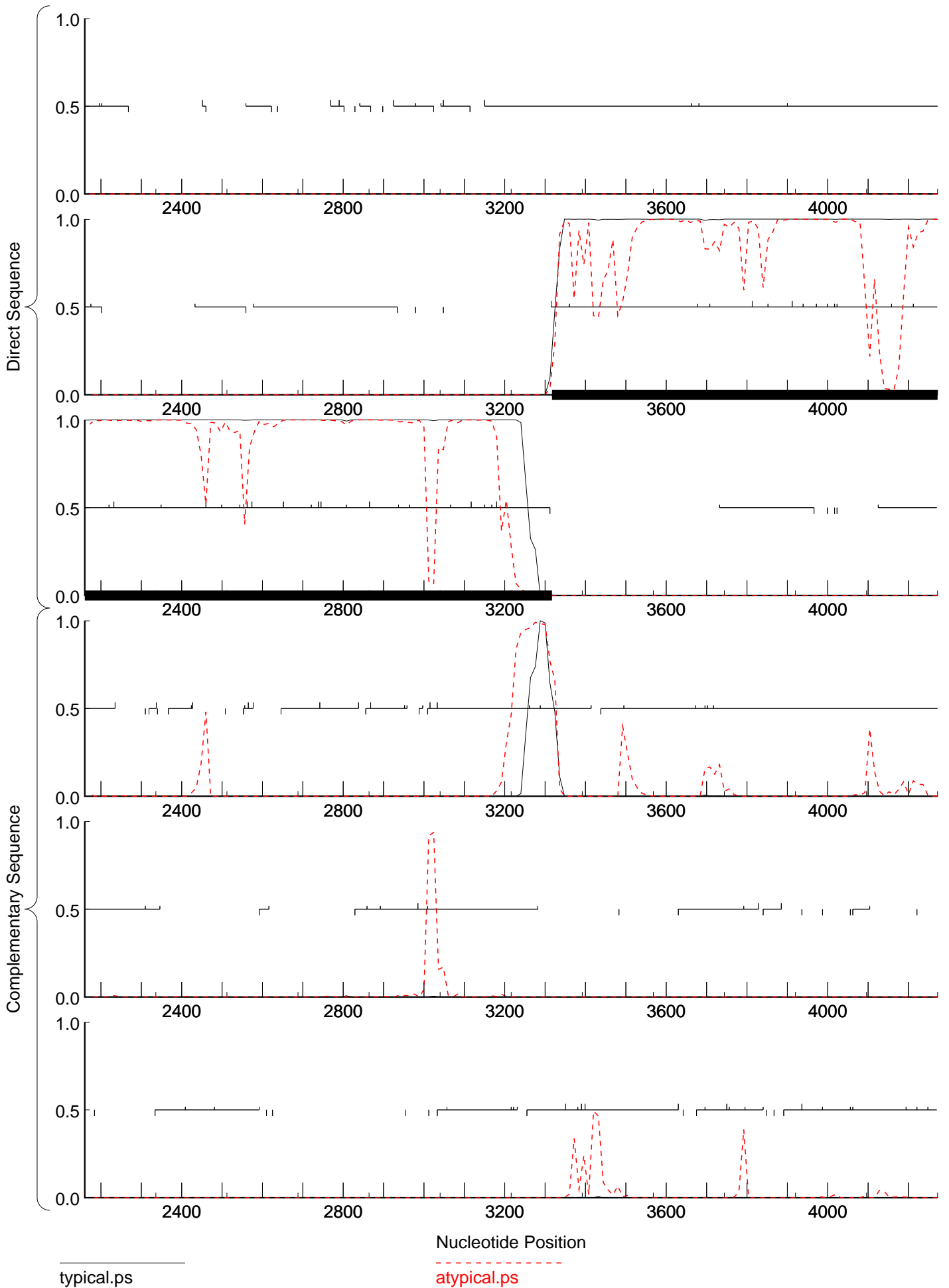
Training set derived by GeneMarkS, 4.30 October 2014
Thu Sep 21 04:42:15 2017

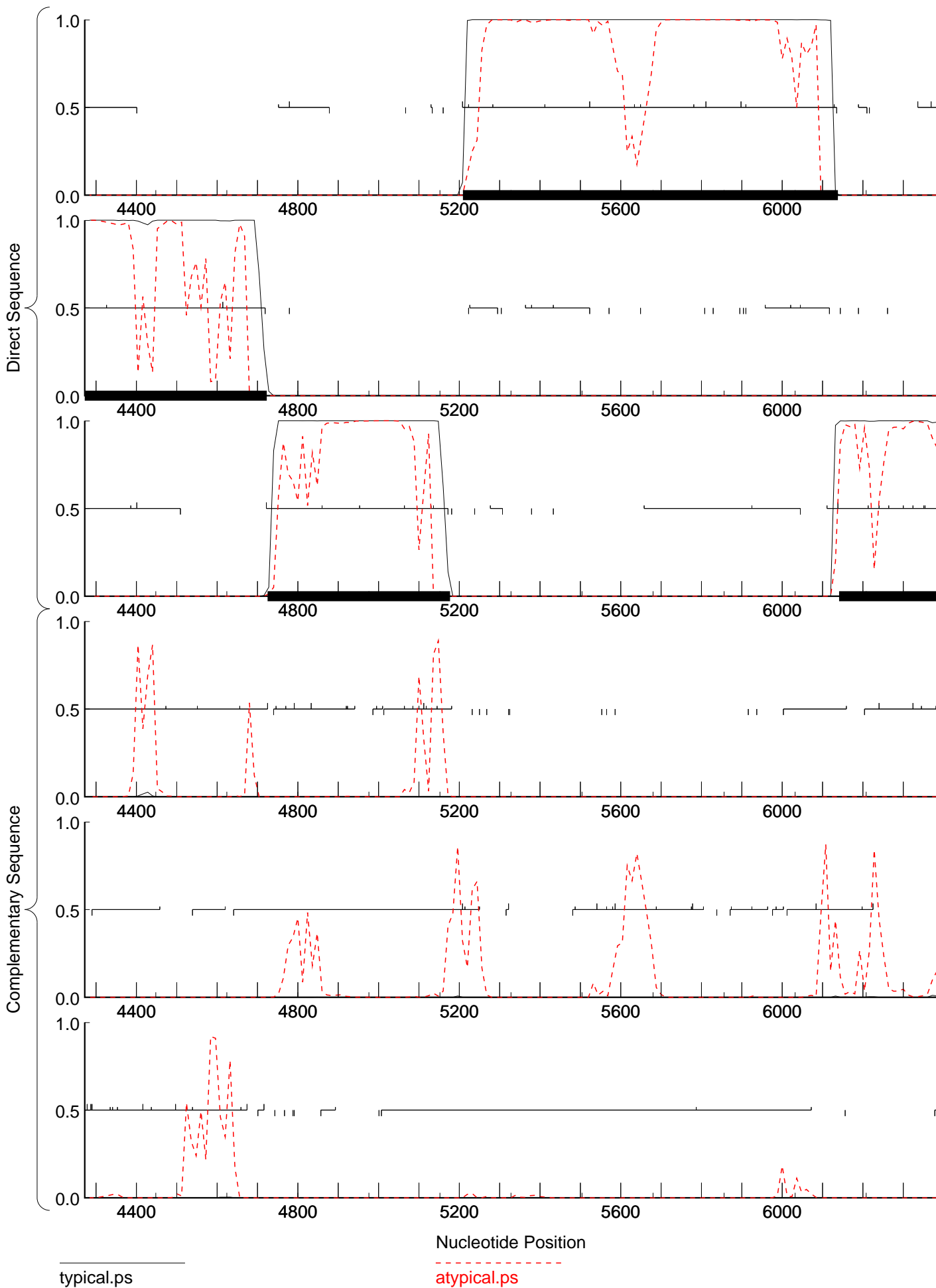
MATRIX INFORMATION

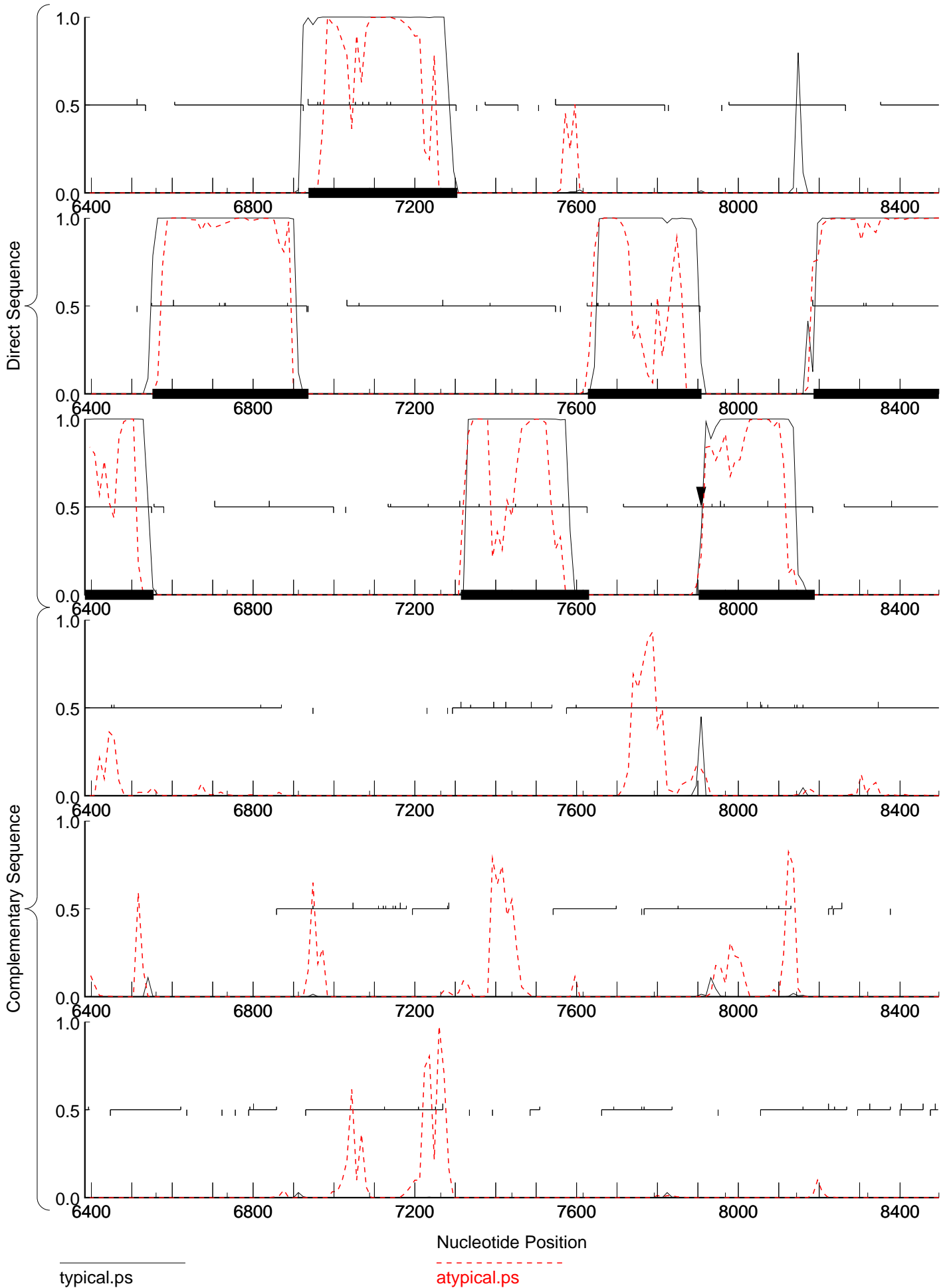
Matrix : -
Author : -
Order : 4

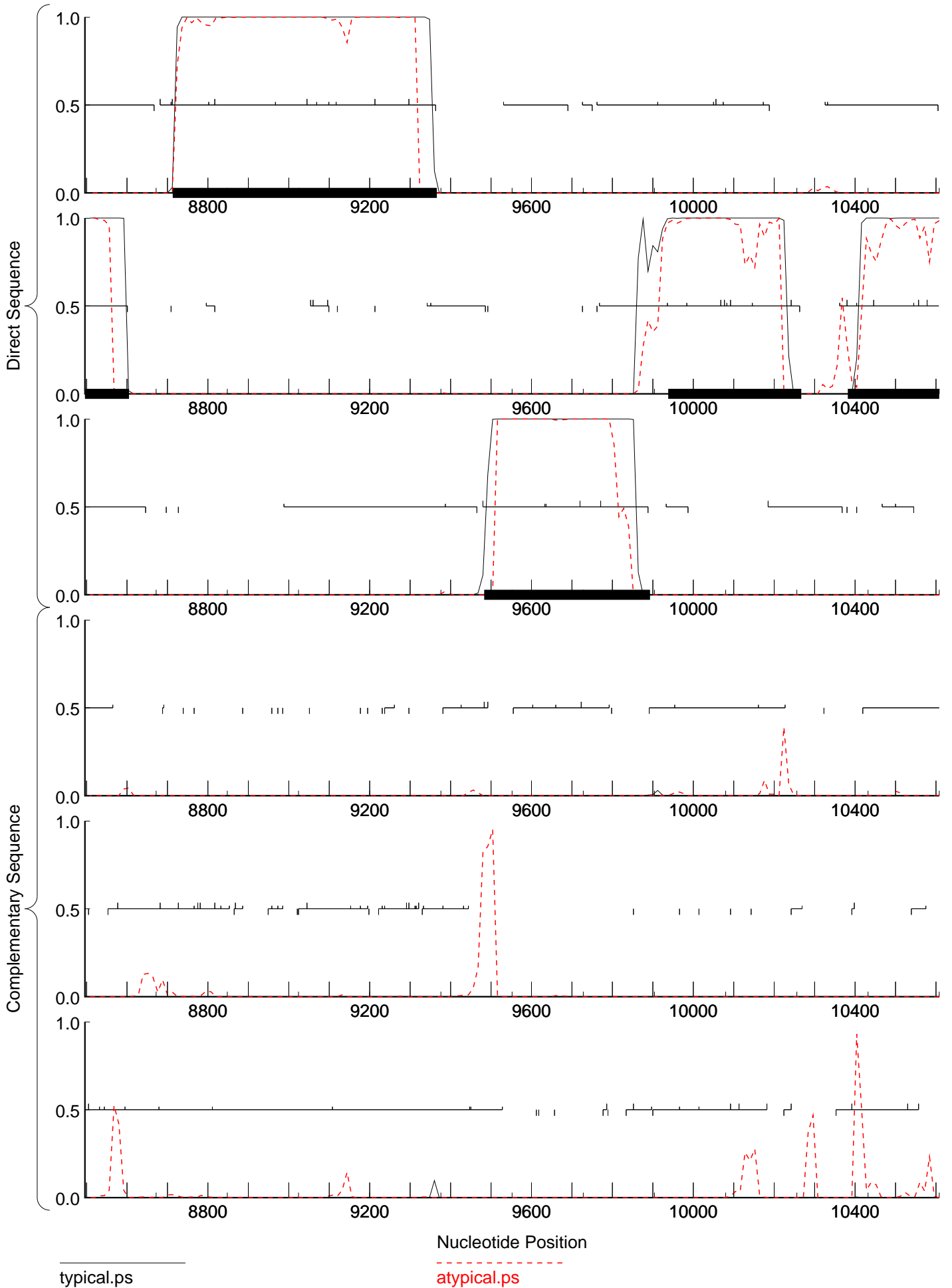
Send questions / comments to:
Dr. M. Borodovsky
Georgia Institute of Technology
School of Biology
Atlanta, GA 30332-0230

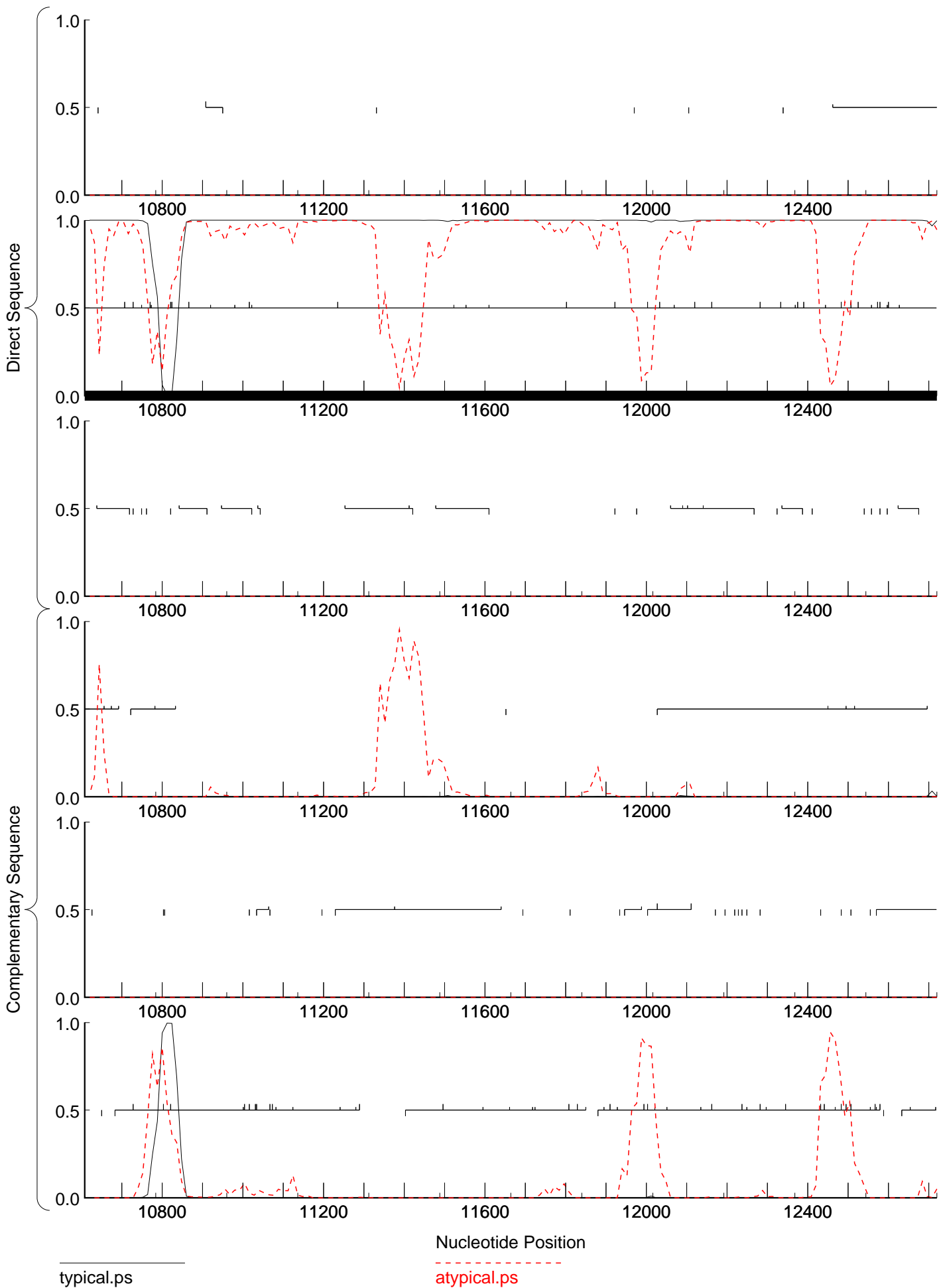




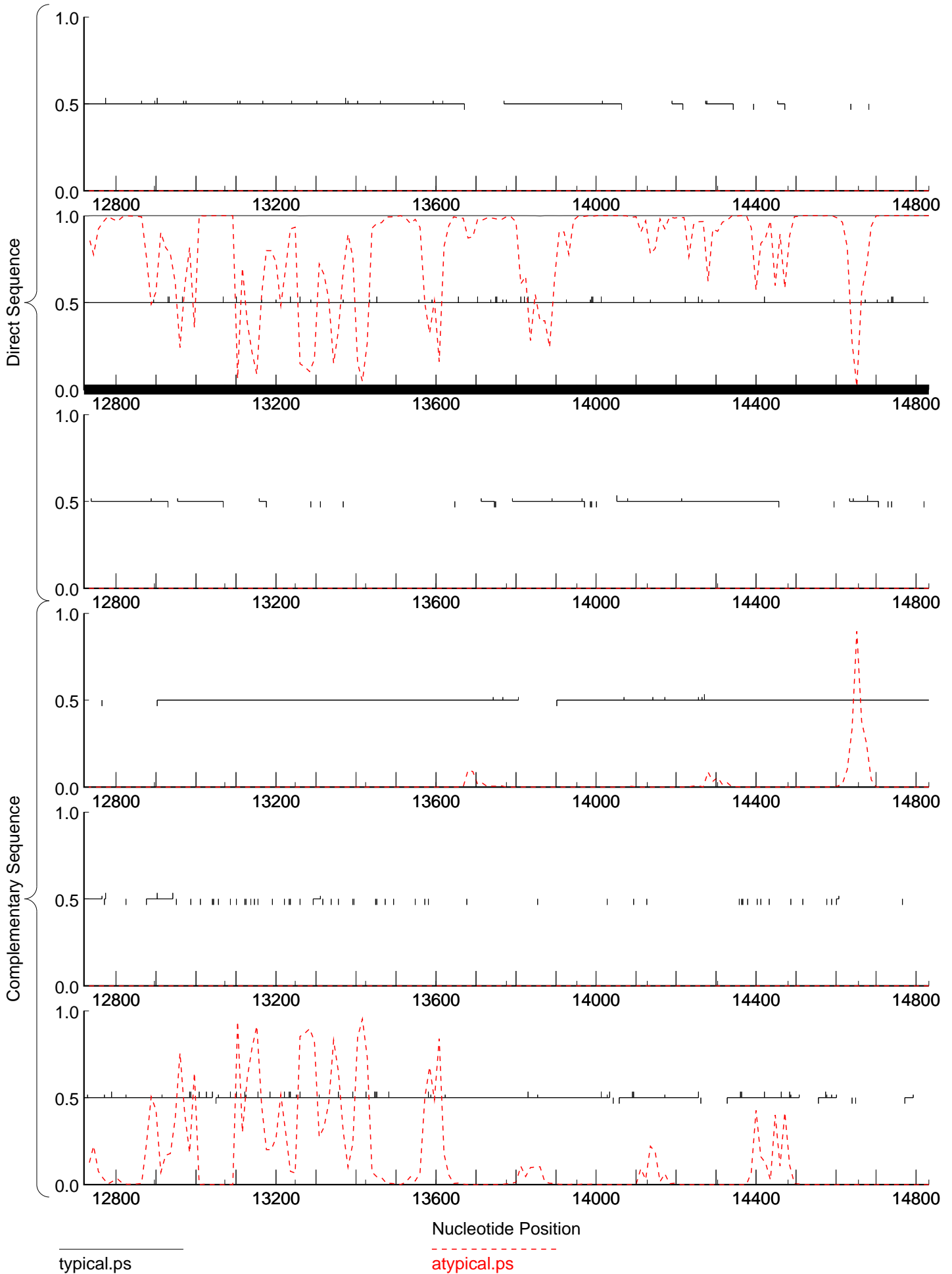






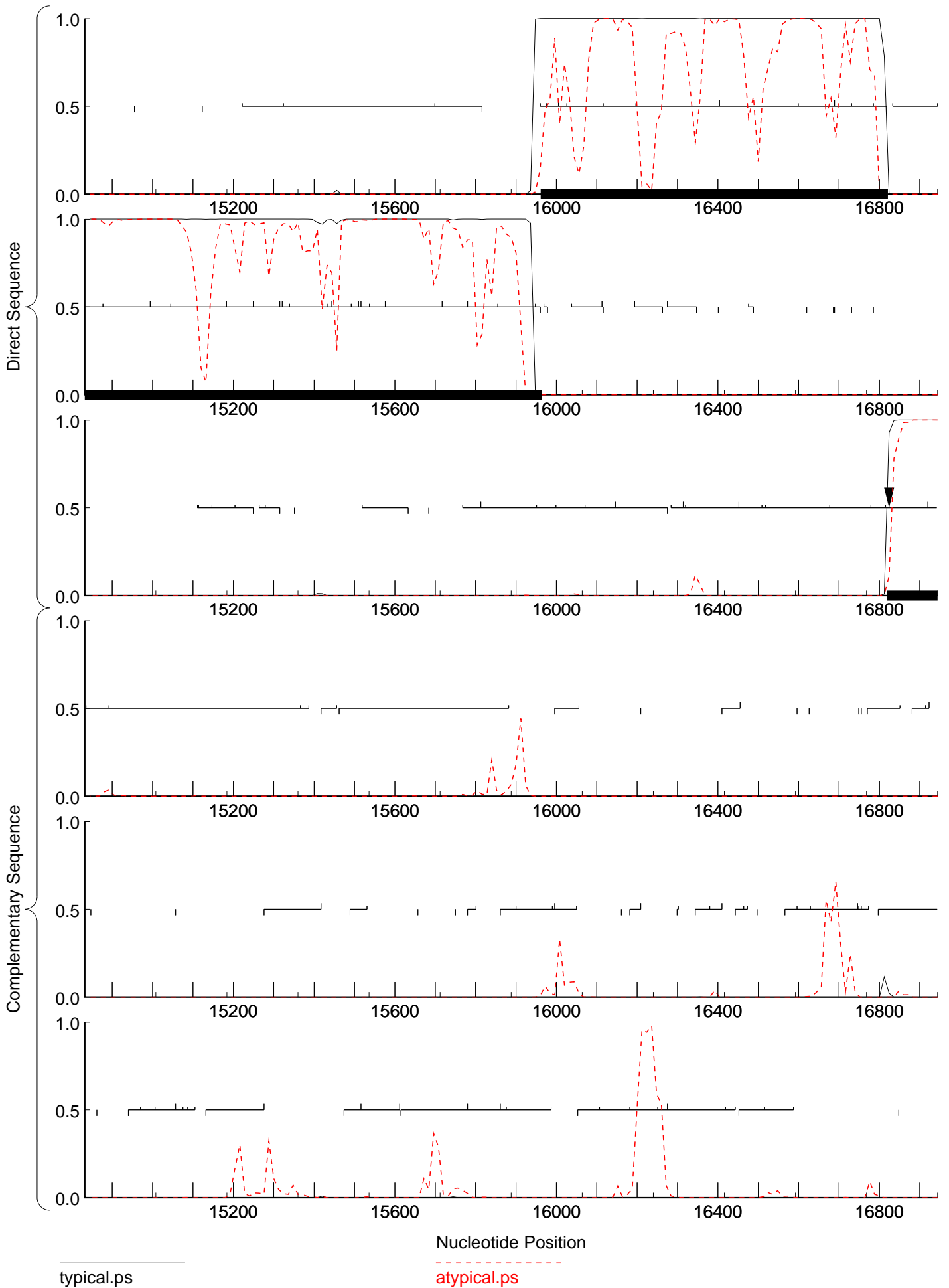


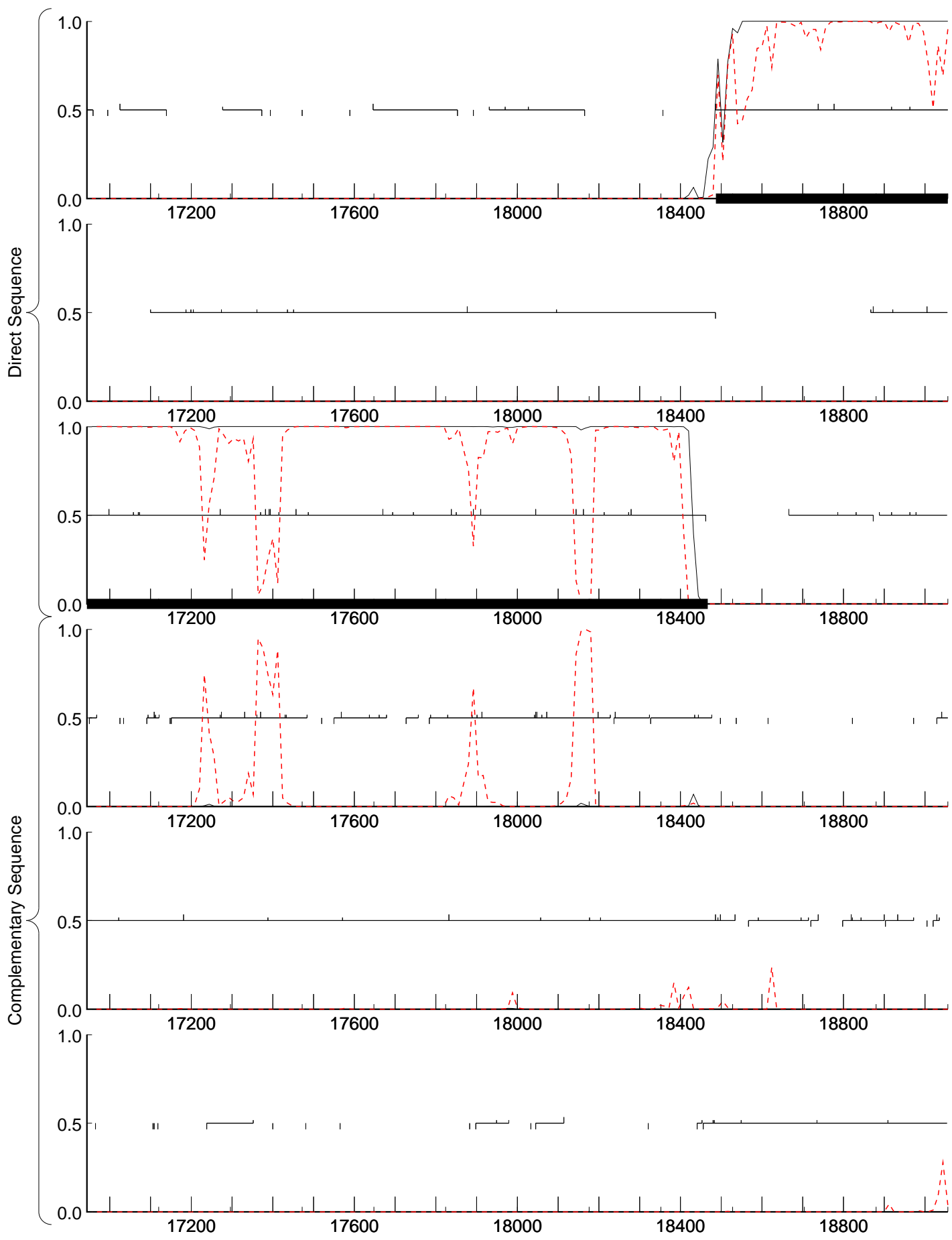
GeneMark.hmm prediction



typical.ps

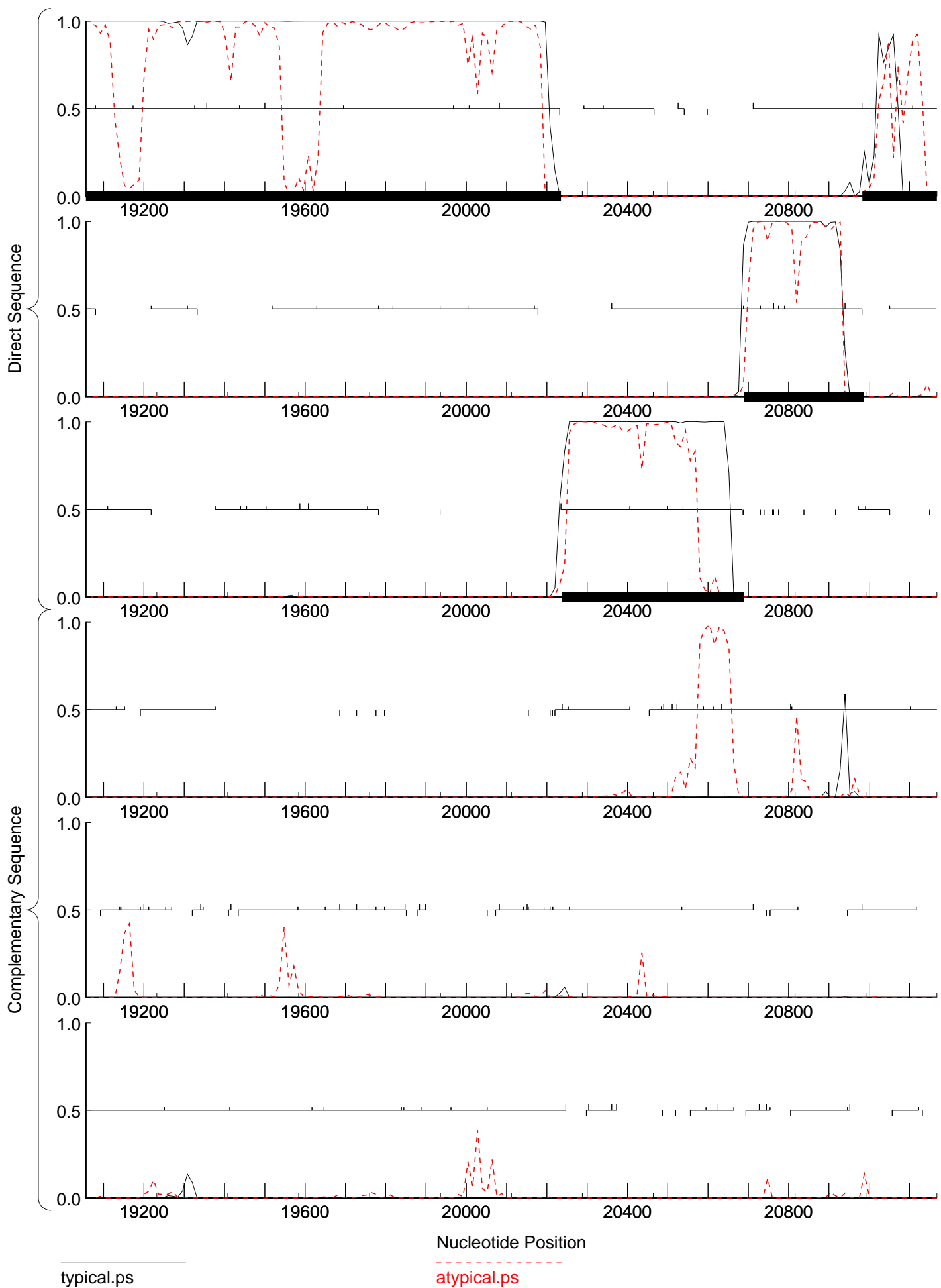
atypical.ps

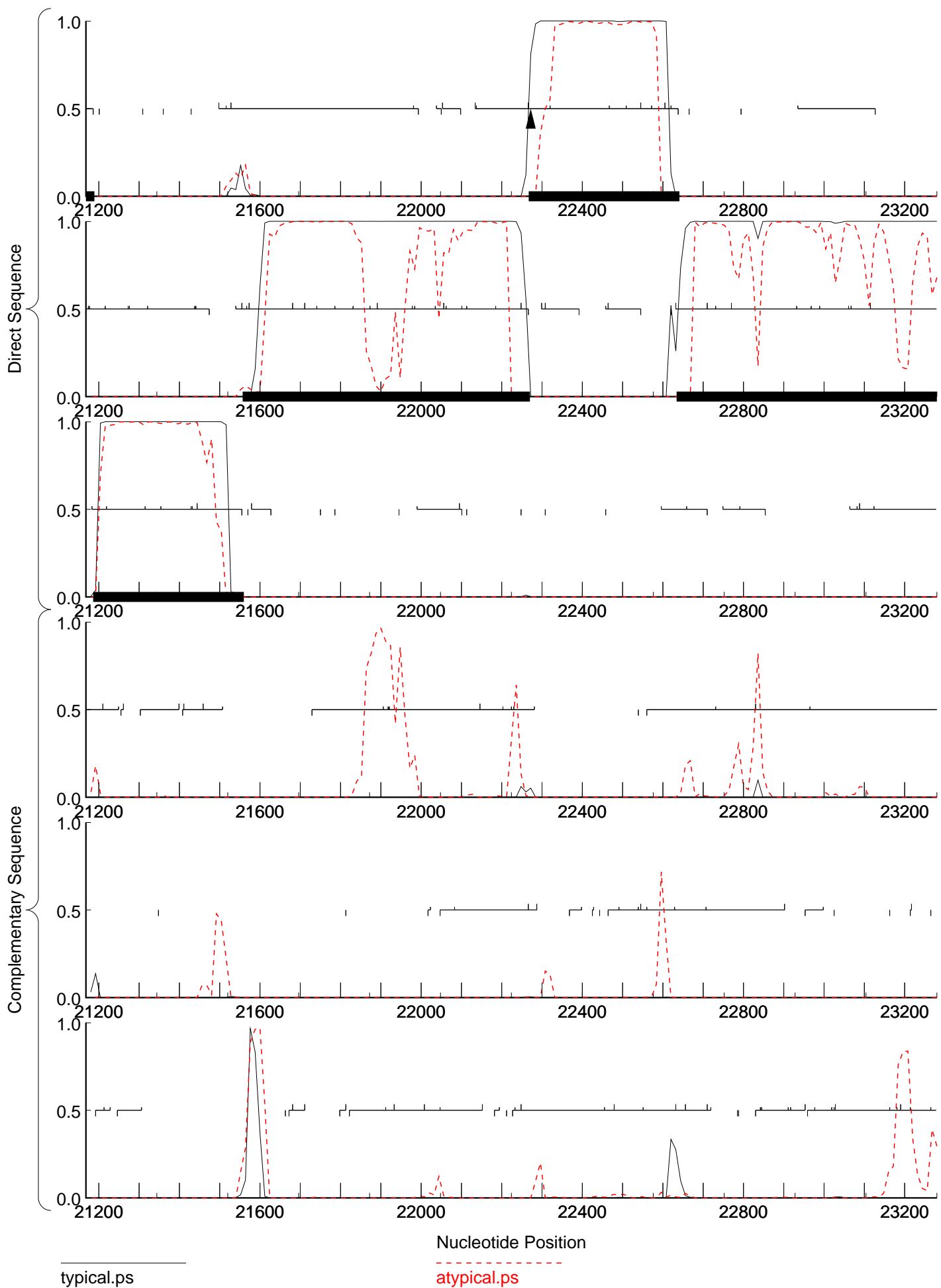


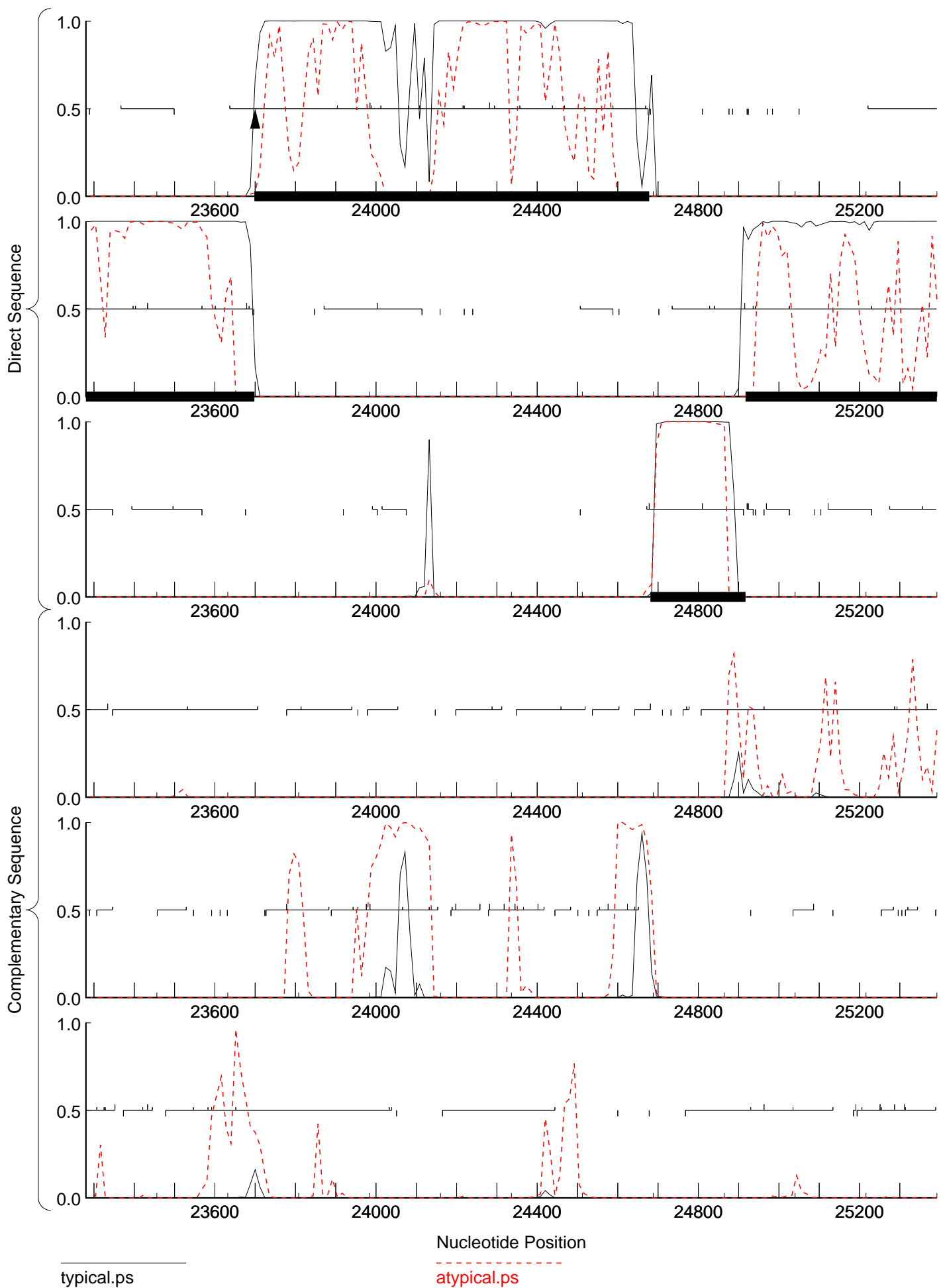


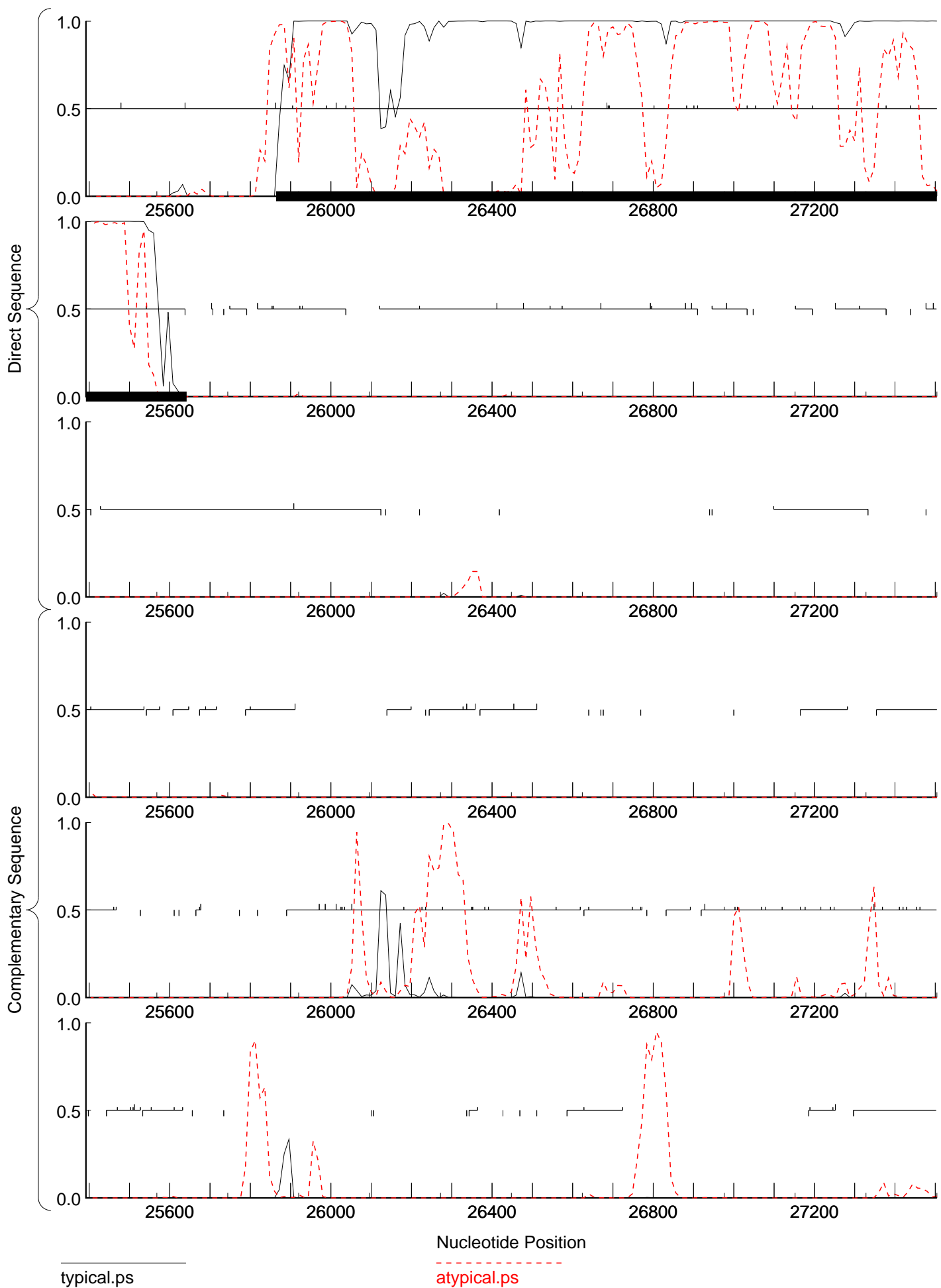
typical.ps

atypical.ps

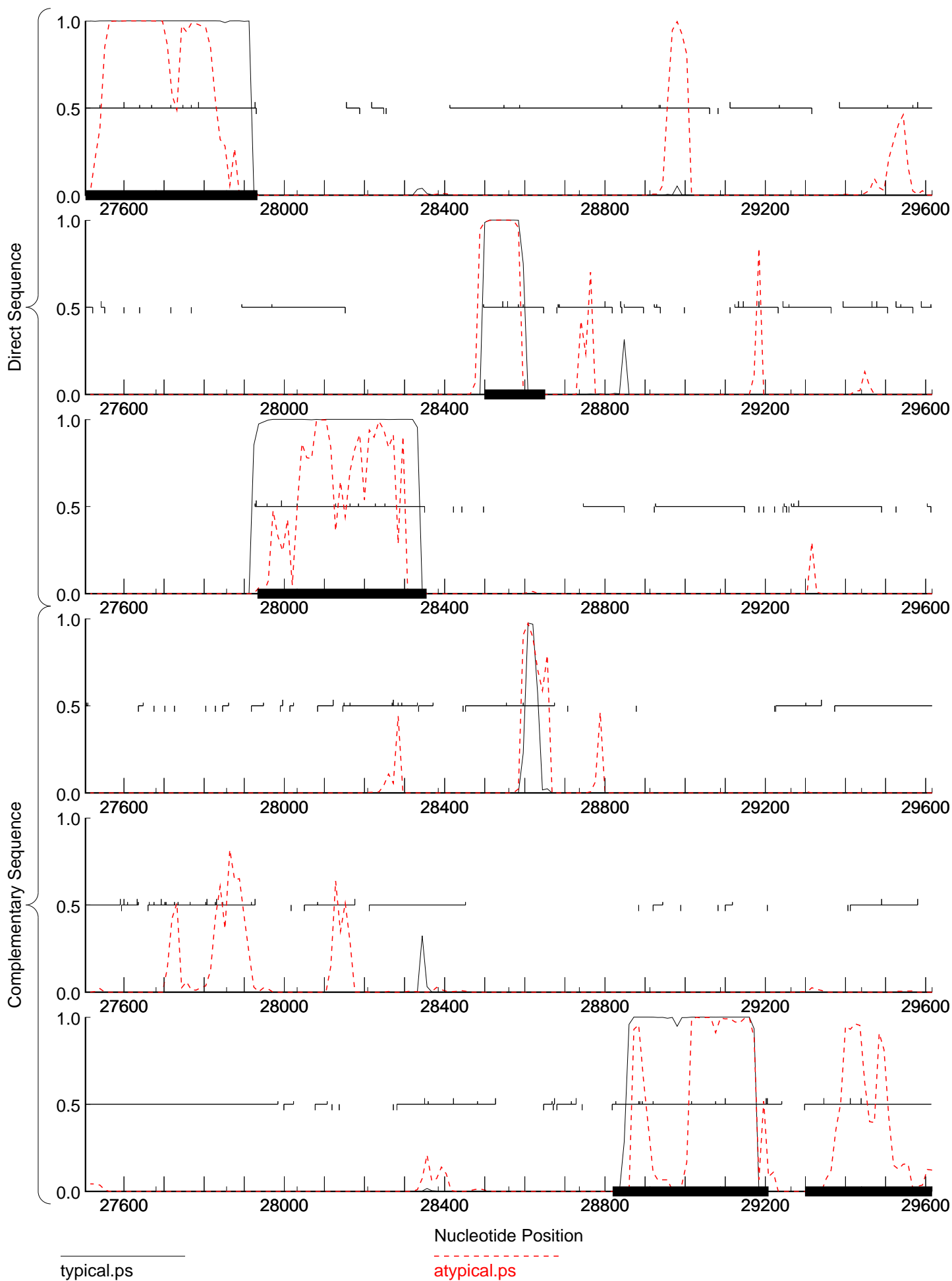


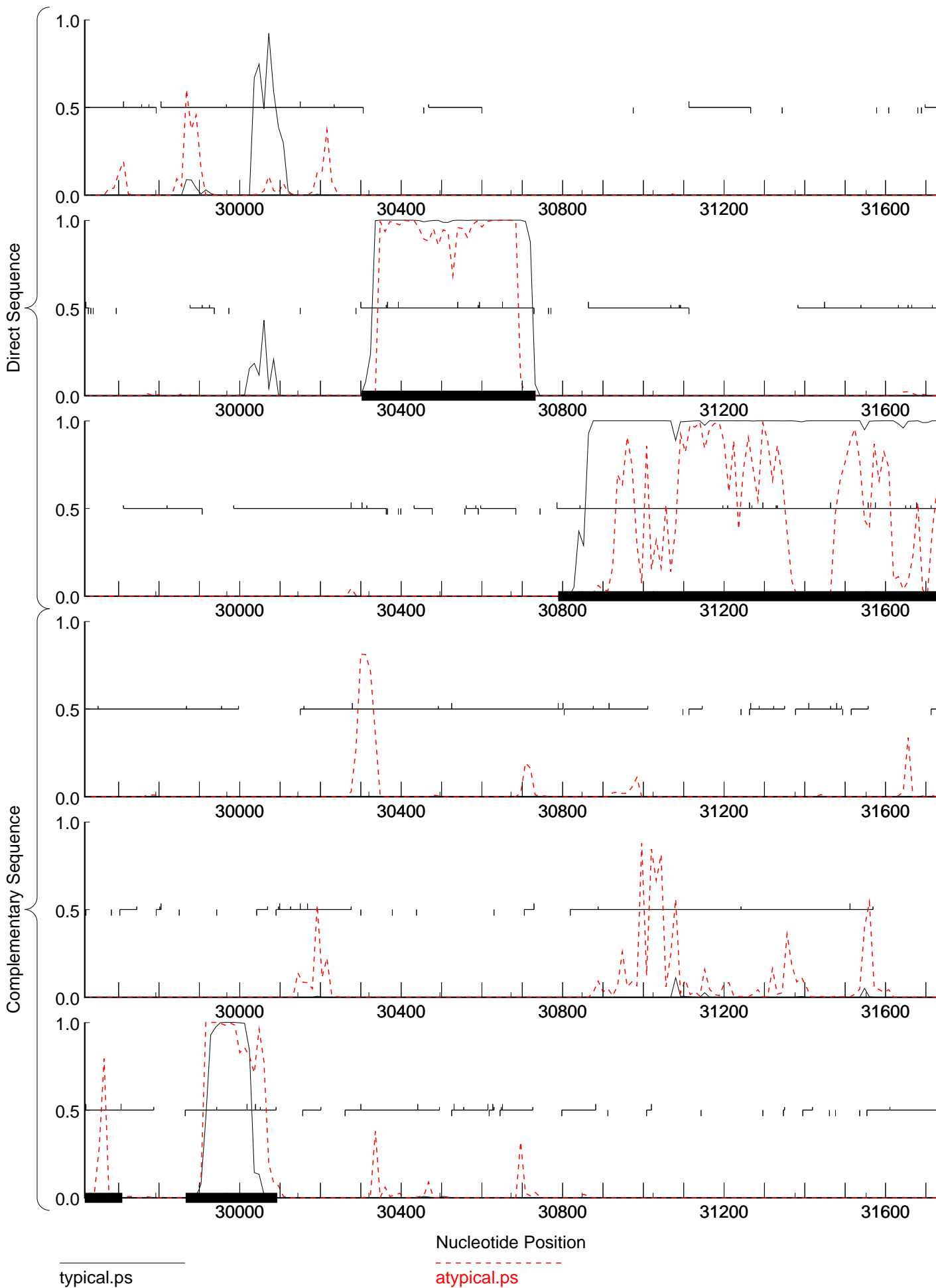


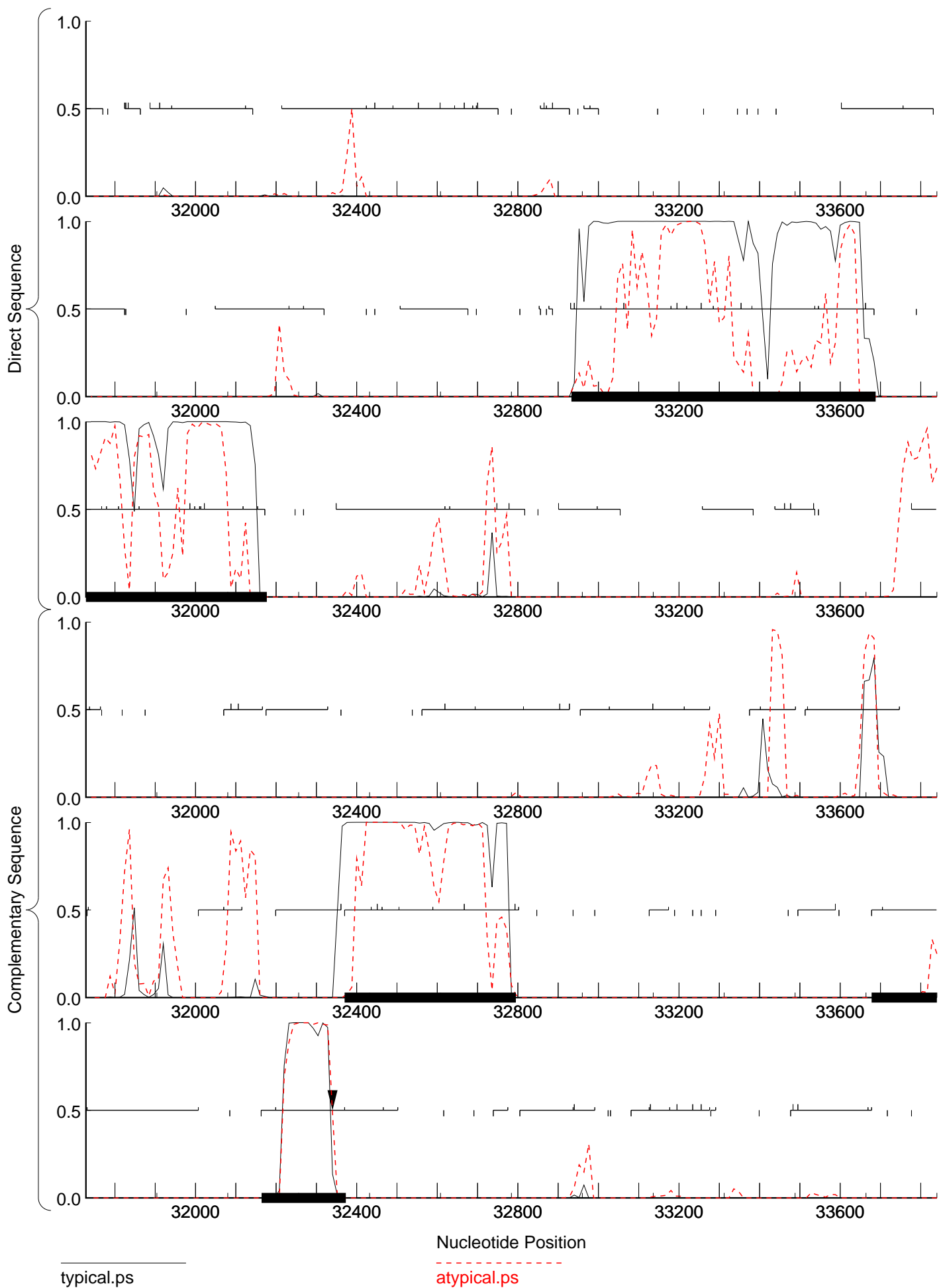


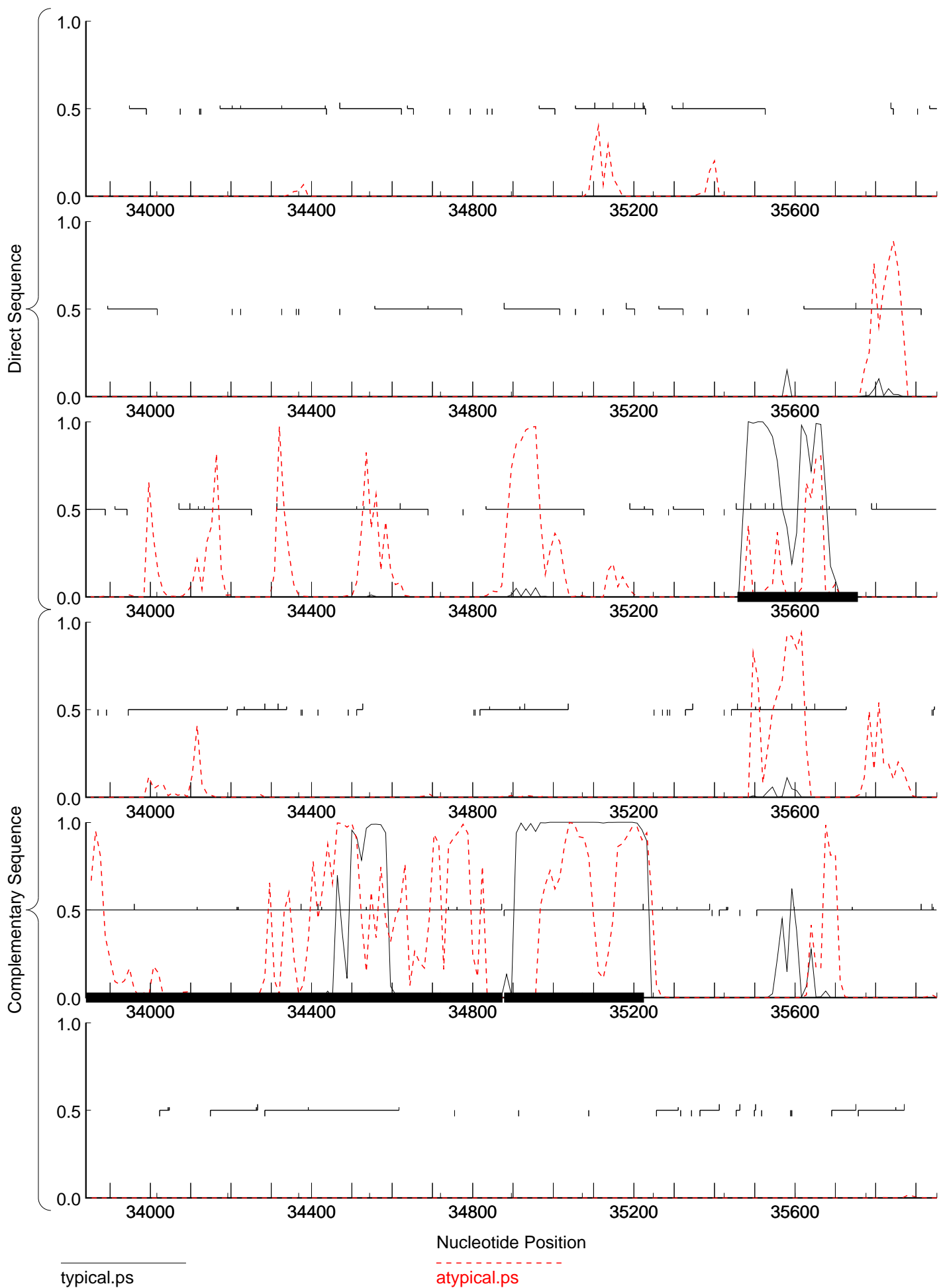


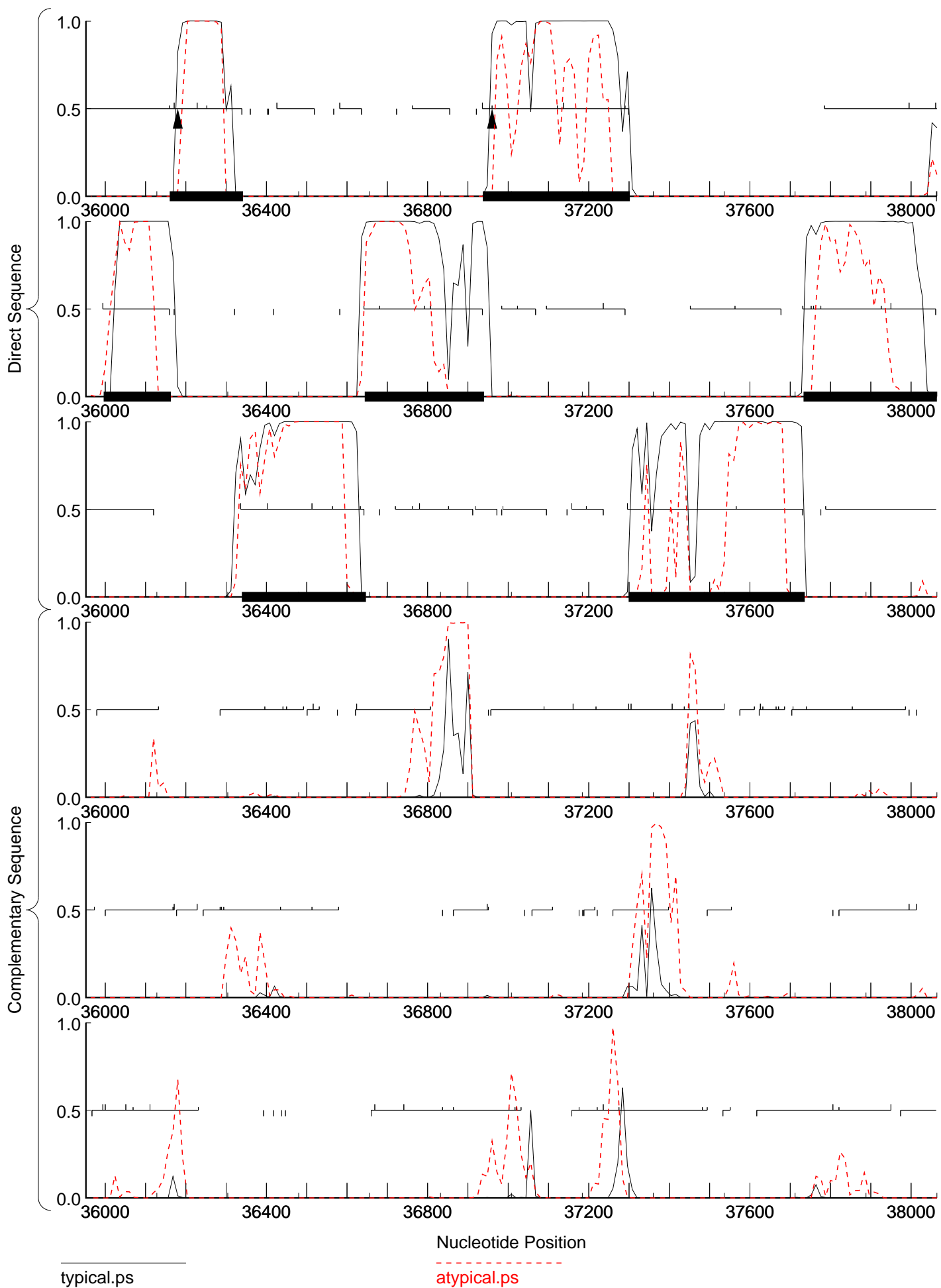
complete sequence, 50187 bp including 10-base 3' overhang (TCGCCGGTGA), Cluster CV, Order 4, Window 96, Step 12, 15/25
complete sequence, 50187 bp including 10-base 3' overhang (TCGCCGGTGA), Cluster CV, Order 2, Window 96, Step 12, 15/25





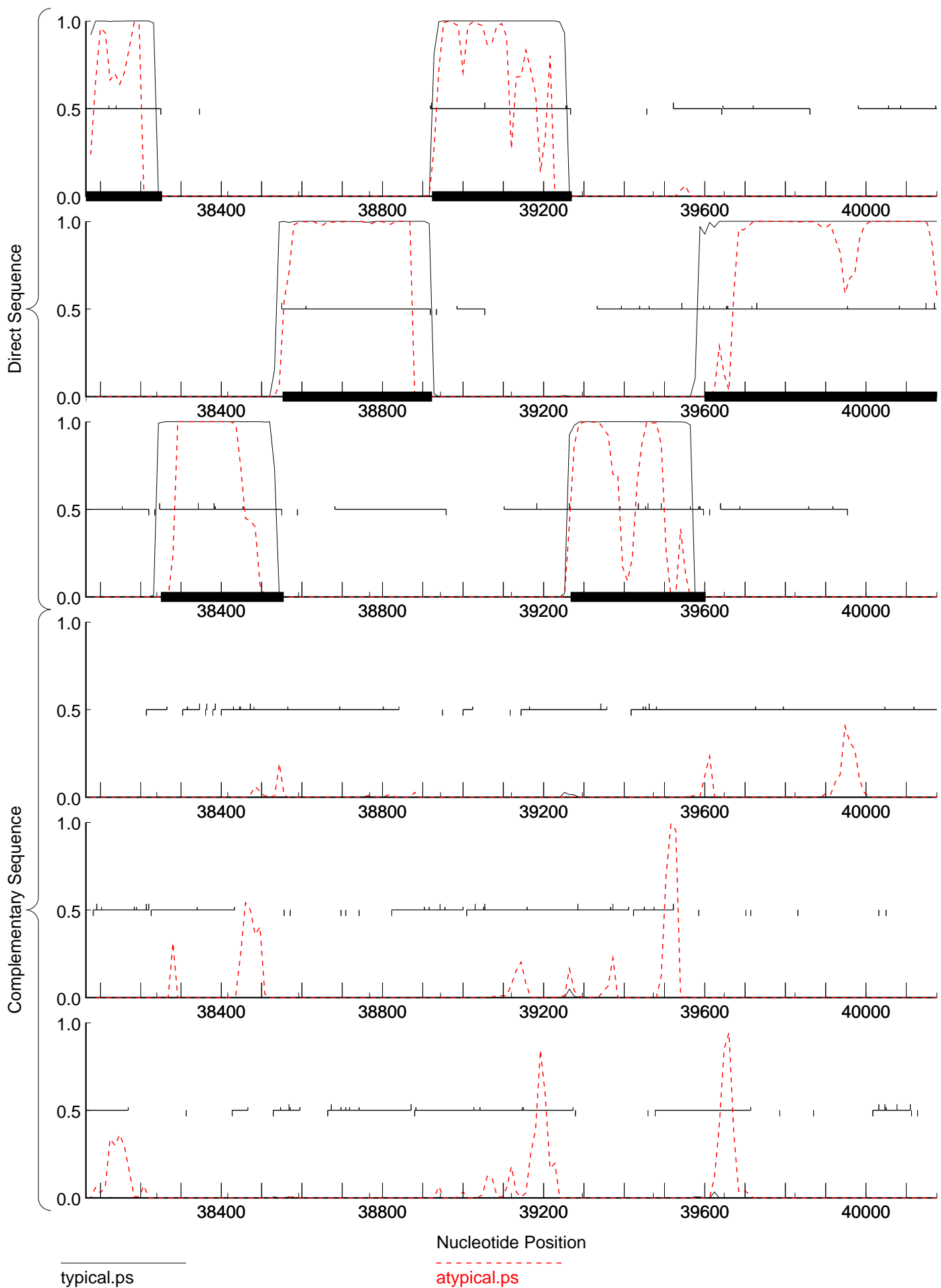


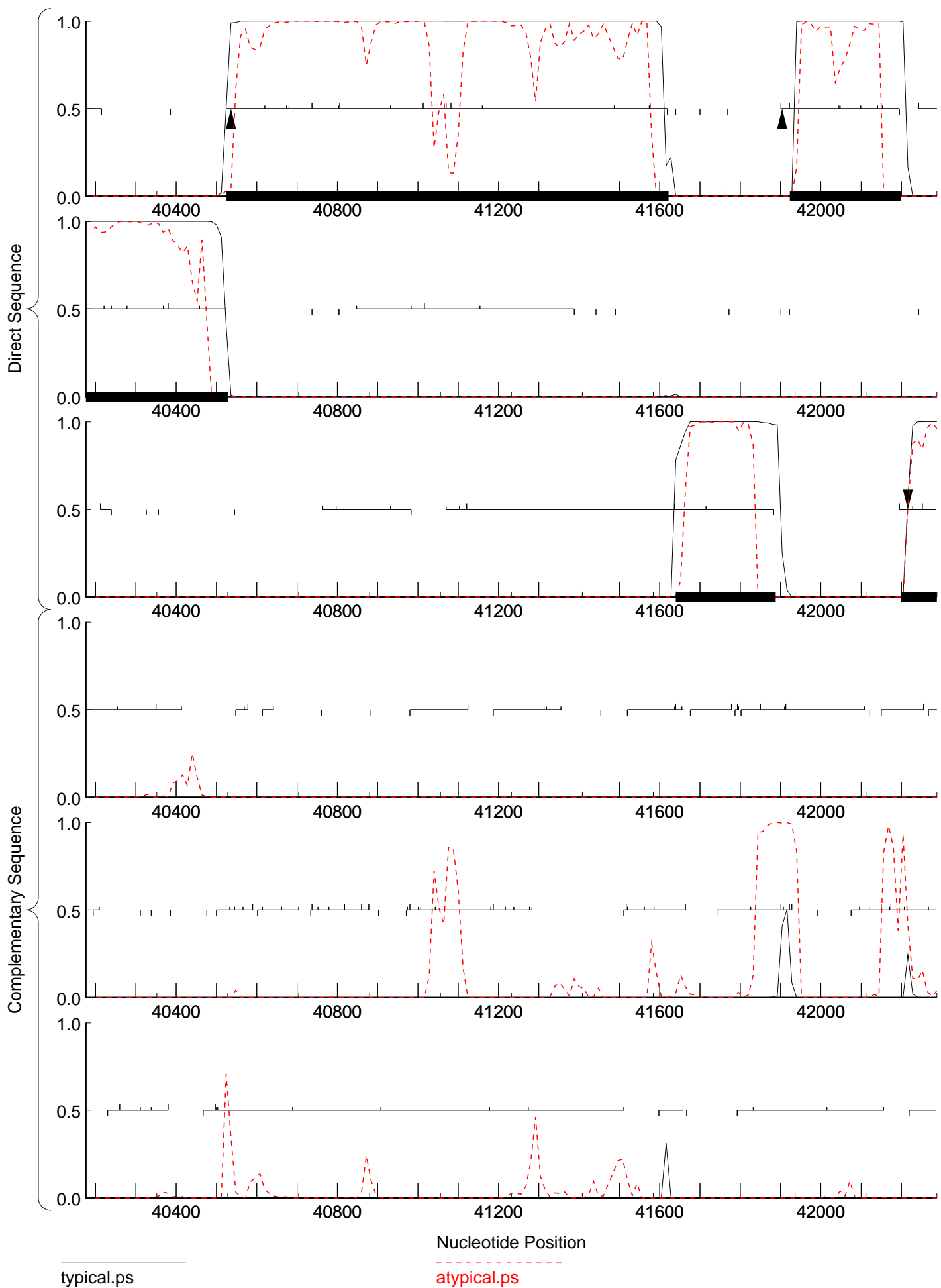




typical.ps

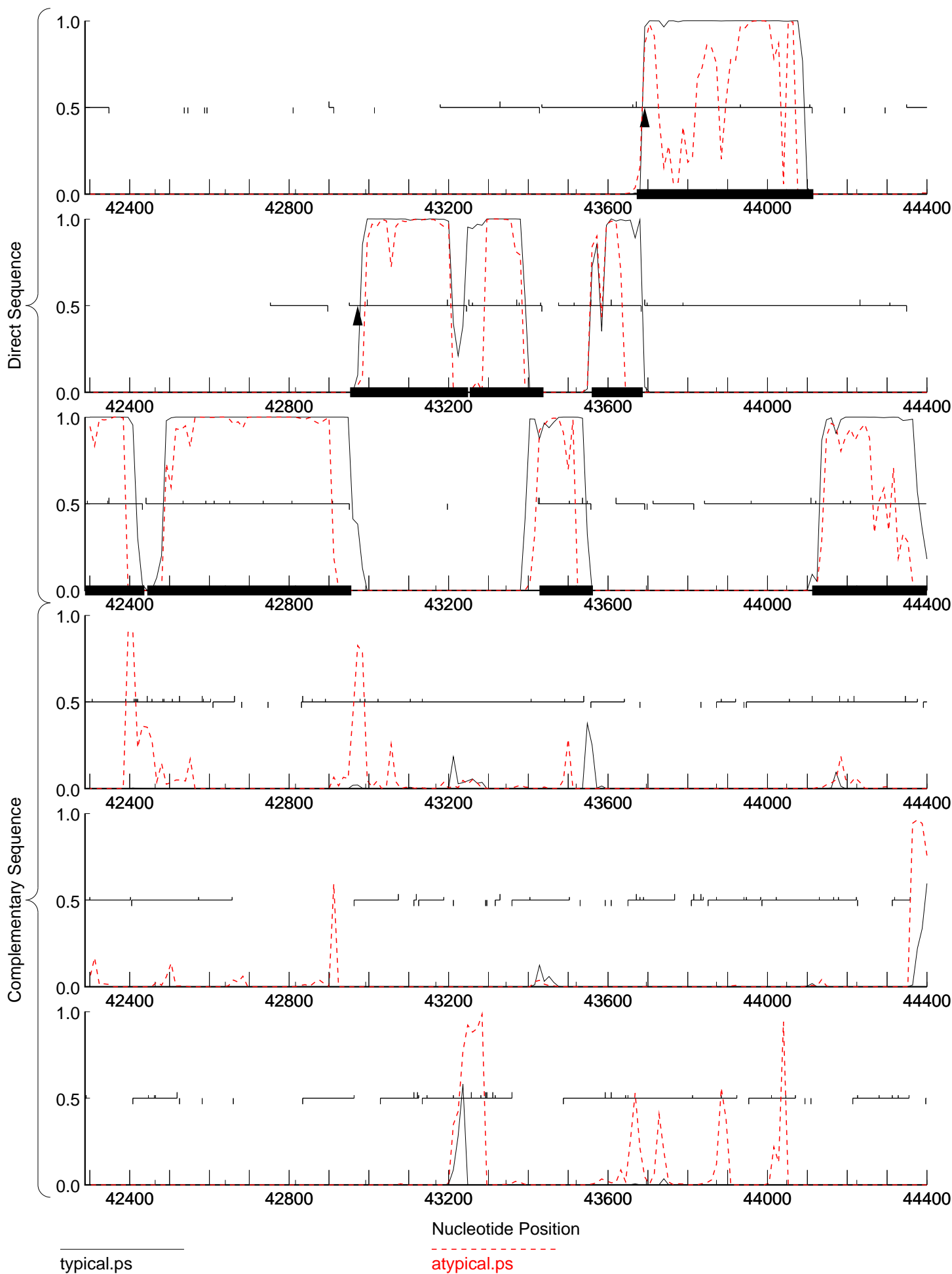
atypical.ps





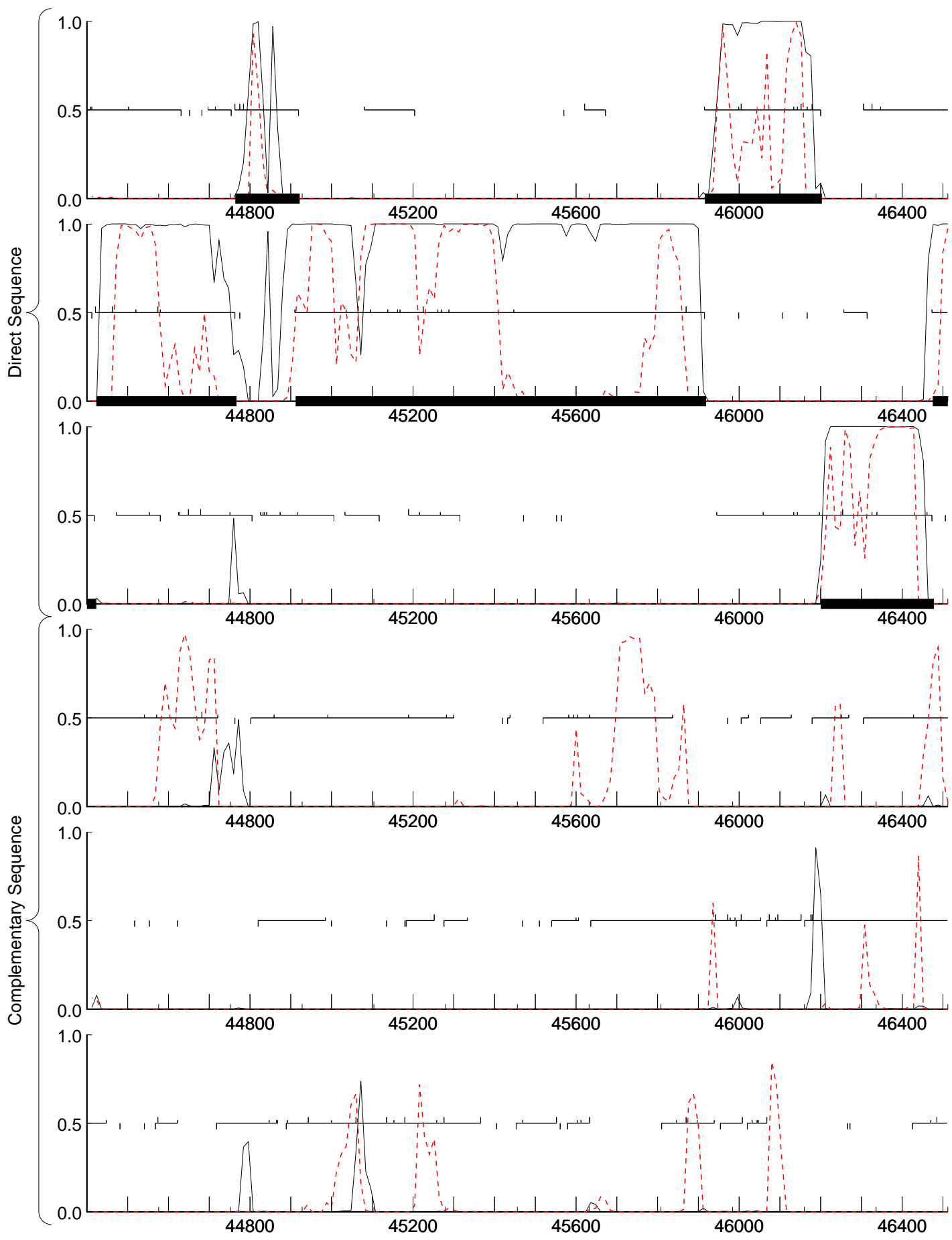
typical.ps

atypical.ps



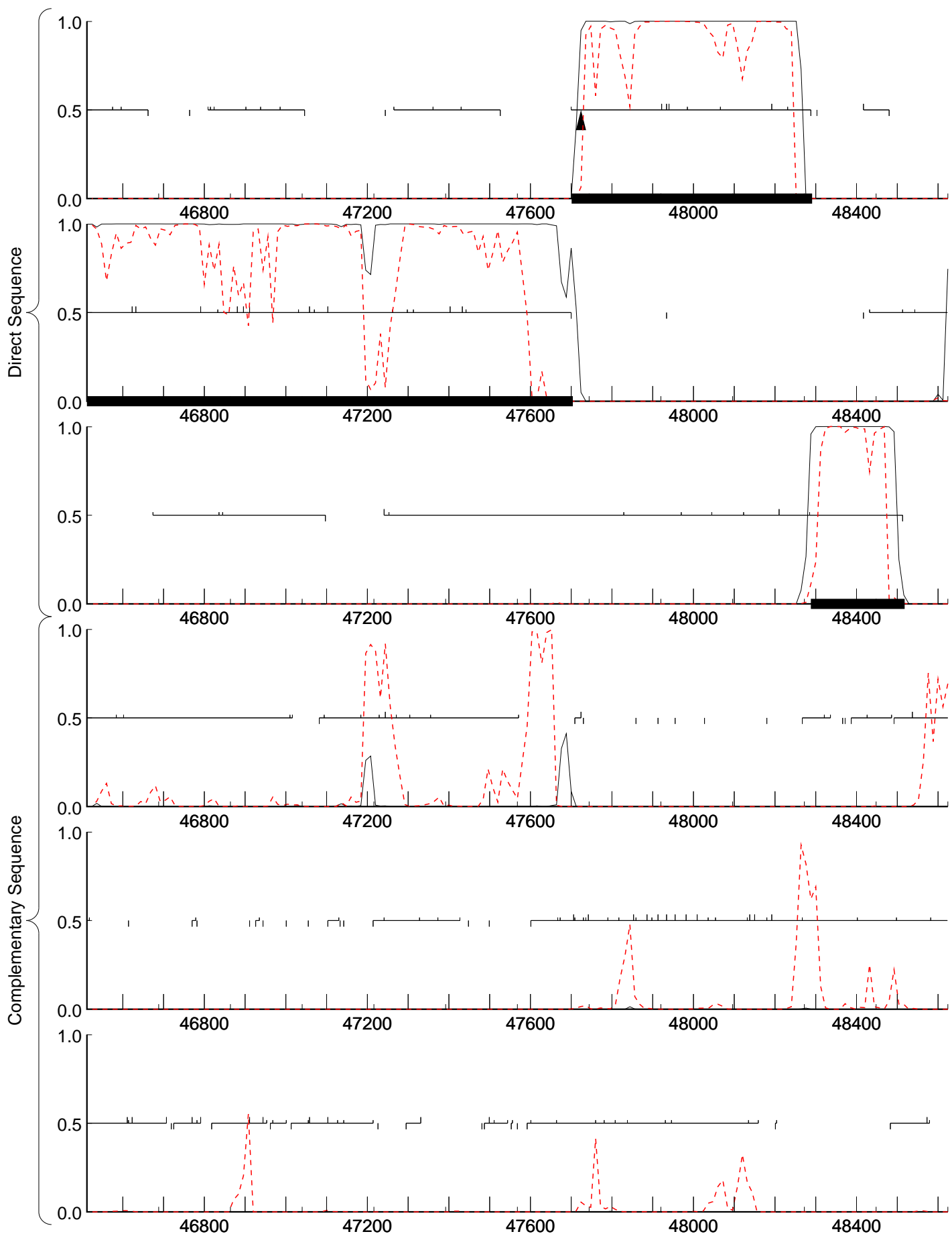
typical.ps

atypical.ps



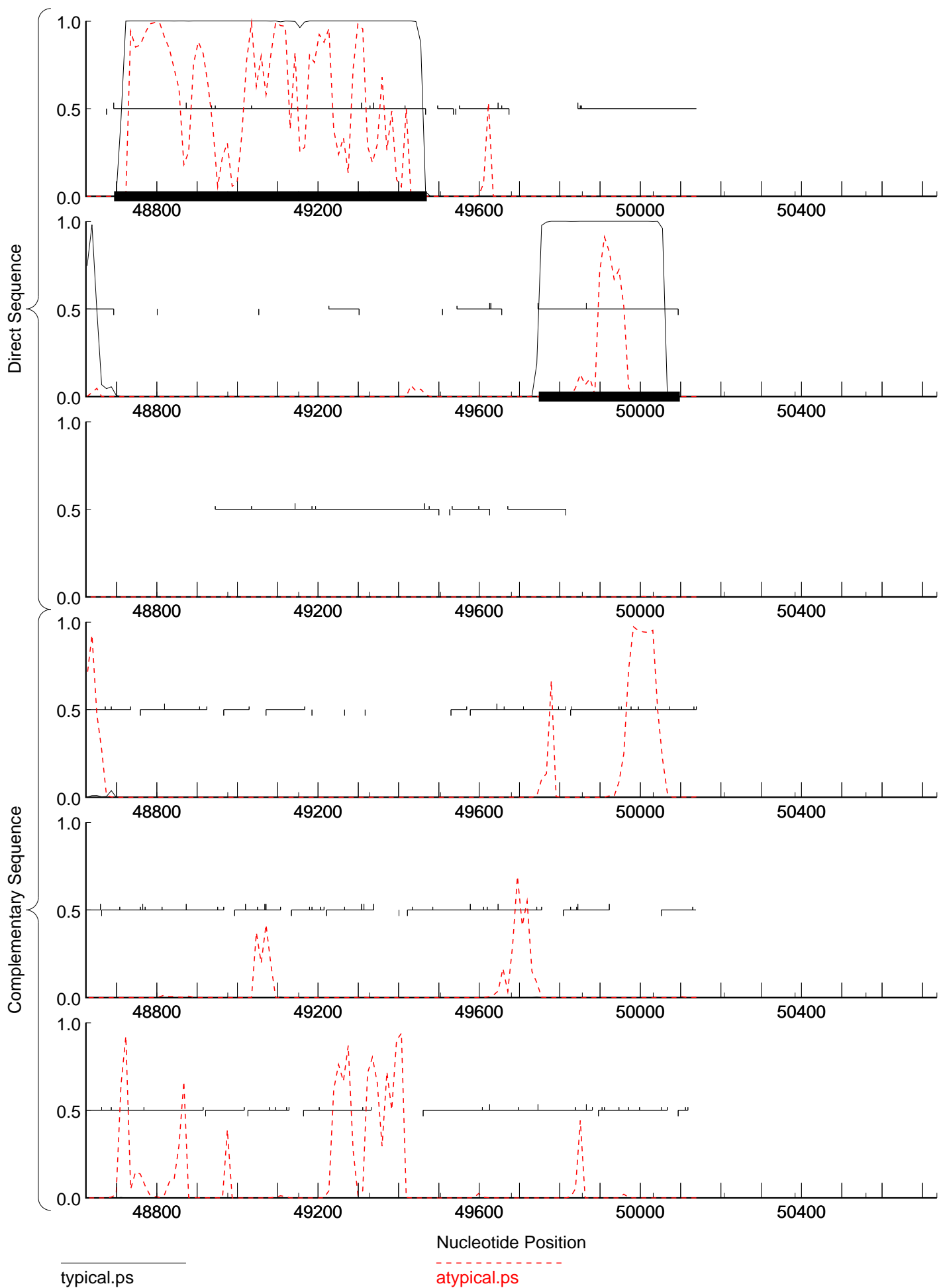
typical.ps

atypical.ps



typical.ps

atypical.ps



typical.ps

atypical.ps