

GeneMark

Version 2.5p (09.08.06)

Copyright 1993 - M. Borodovsky, J. McIninch

PROGRAM INFORMATION

Sequence : Microbacterium phage Camille complete sequence, 53097 bp including 9-base 3' overhang (CGCG)
Analysis Date : 9/25/17 at 9:14:23
Pages : 27
Sequence Length : 53097 bp
GC Content : 56.31%

Window Length : 96 bp
Window Step : 12 bp
Threshold Value : 0.500

PS-Version : 1.2

GeneMark Options : PostScript graph,
Mark ORFs / splice sites,
List ORFs,
List regions and/or splice sites,

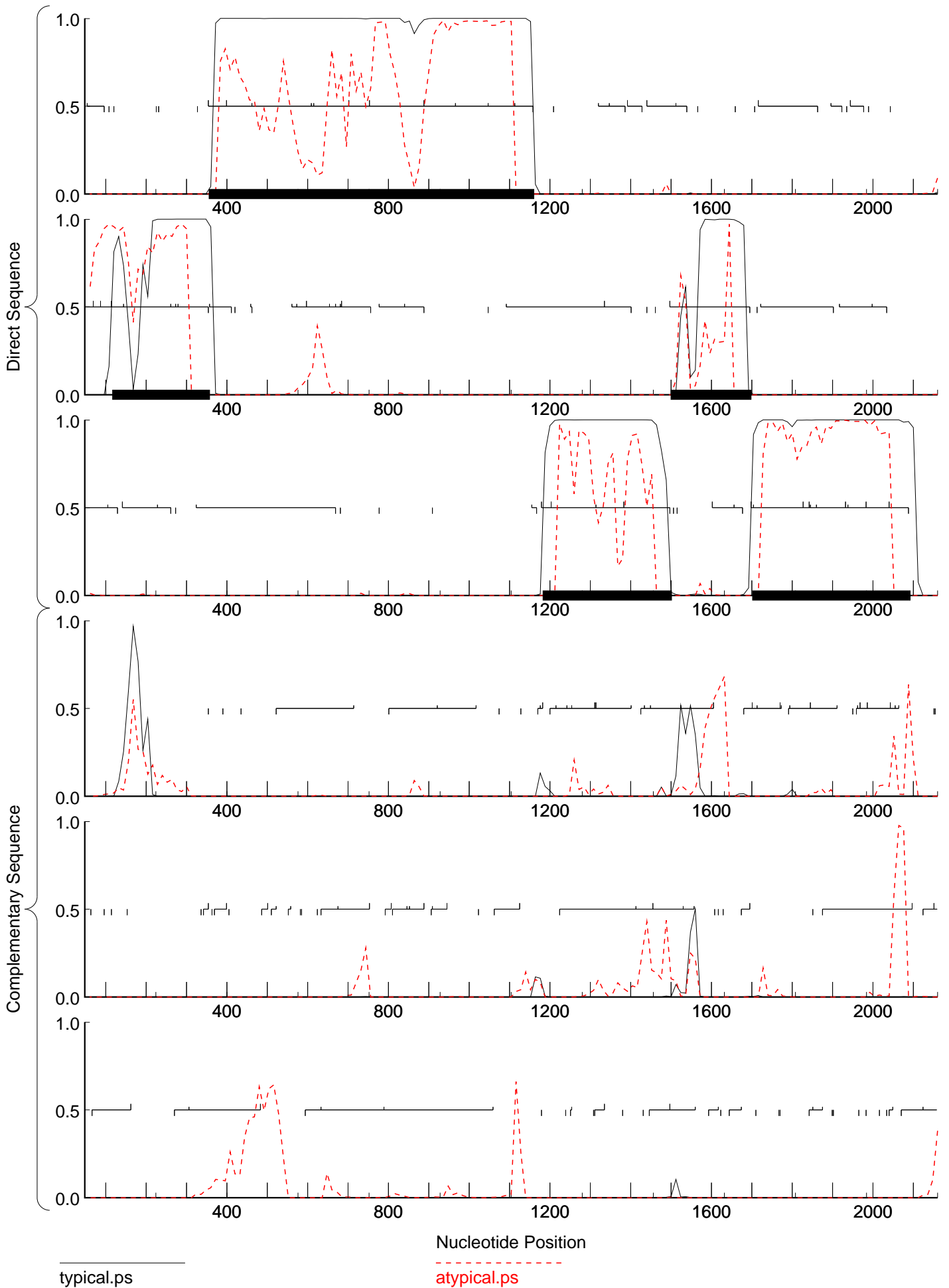
Matrix notes & comments

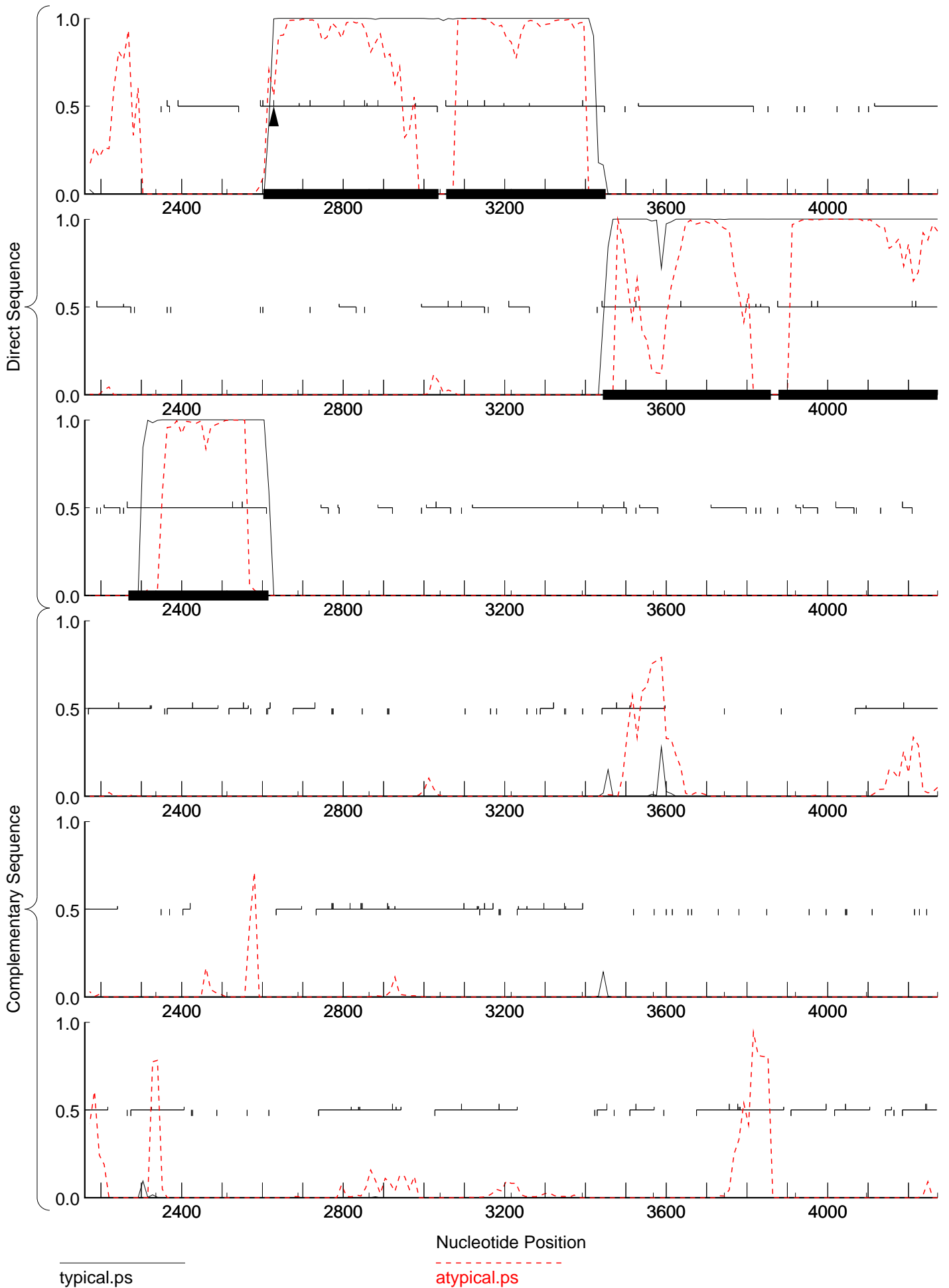
Training set derived by GeneMarkS, 4.30 October 2014
Mon Sep 25 09:14:23 2017

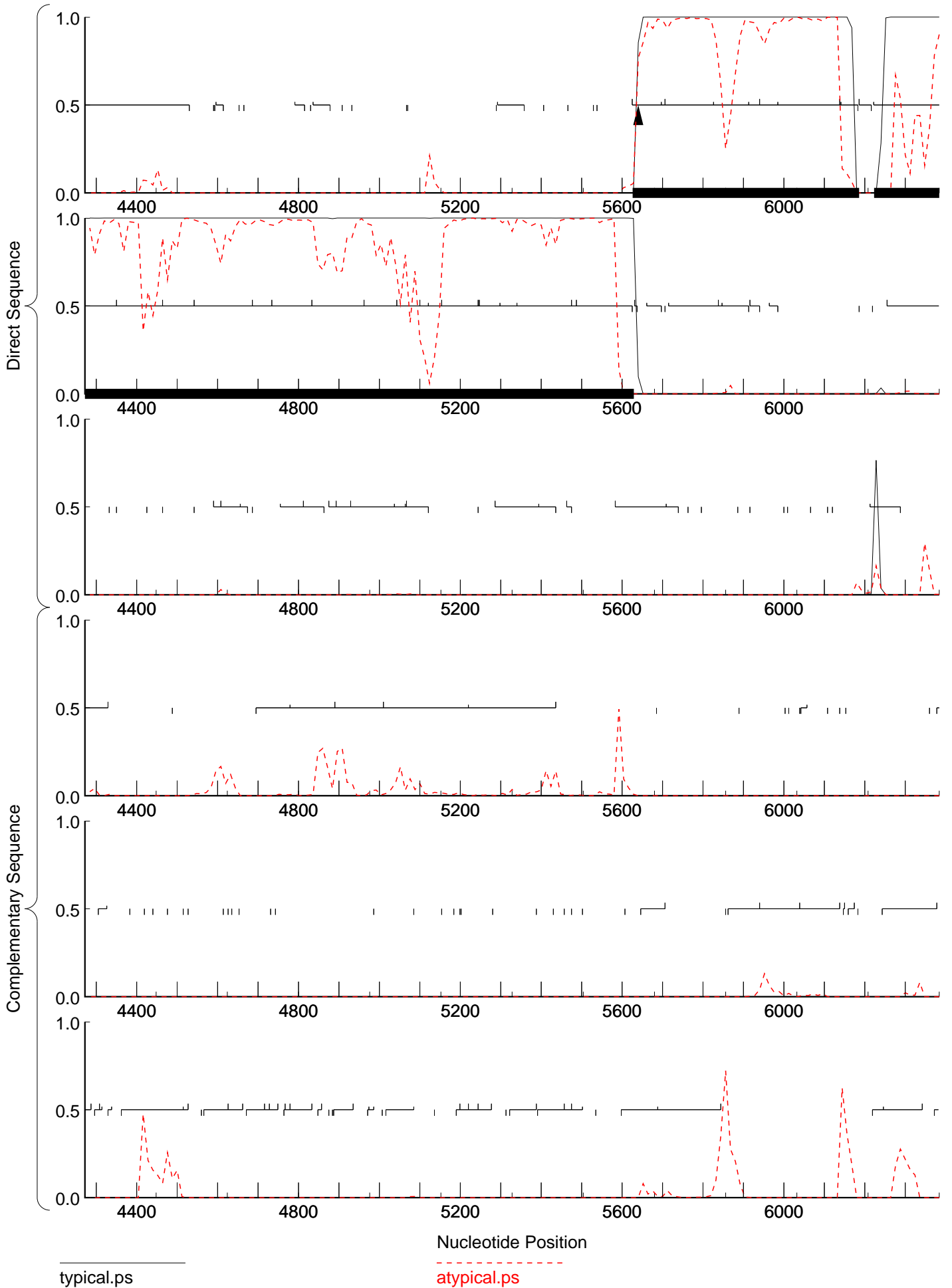
MATRIX INFORMATION

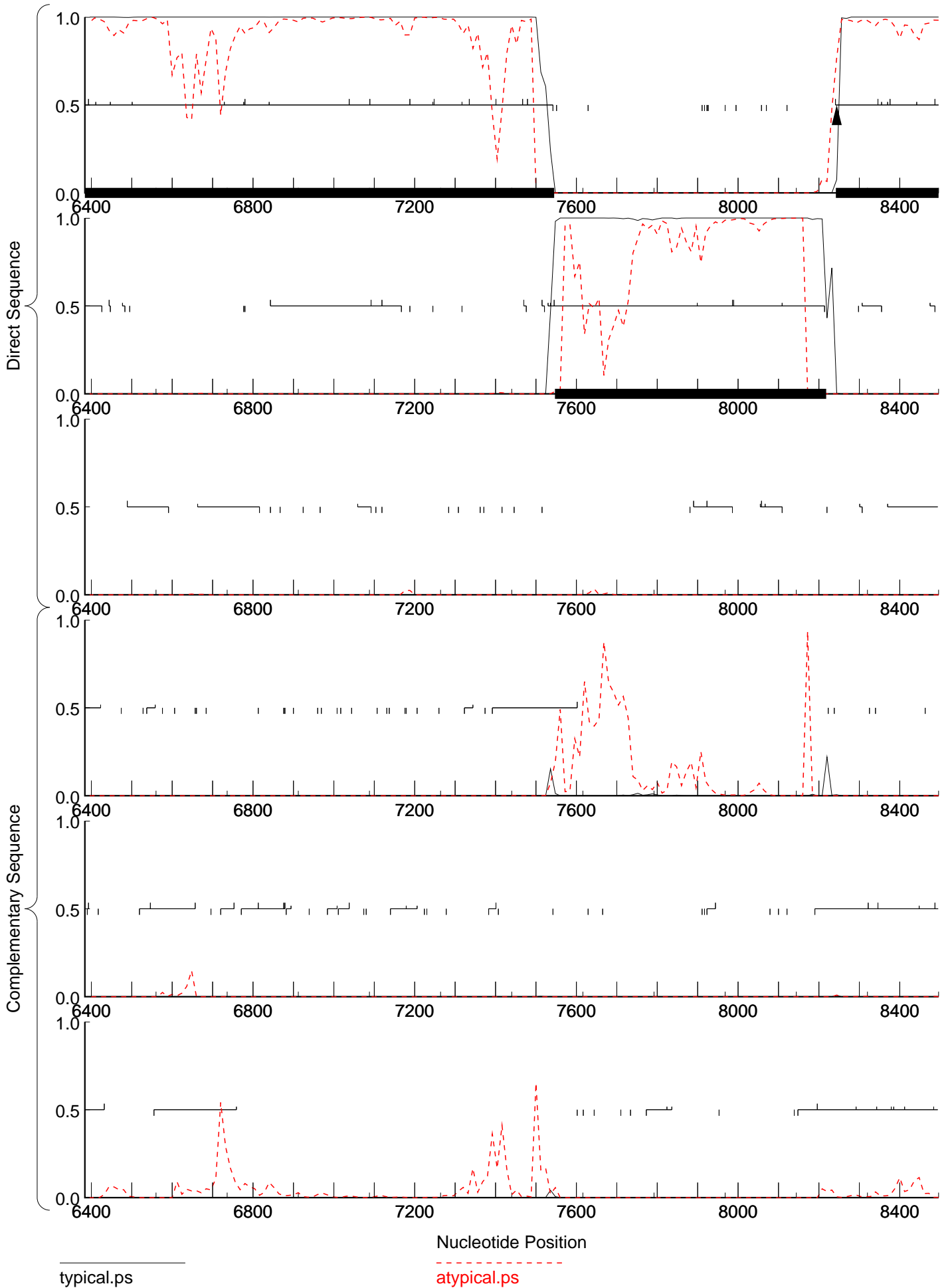
Matrix : -
Author : -
Order : 4

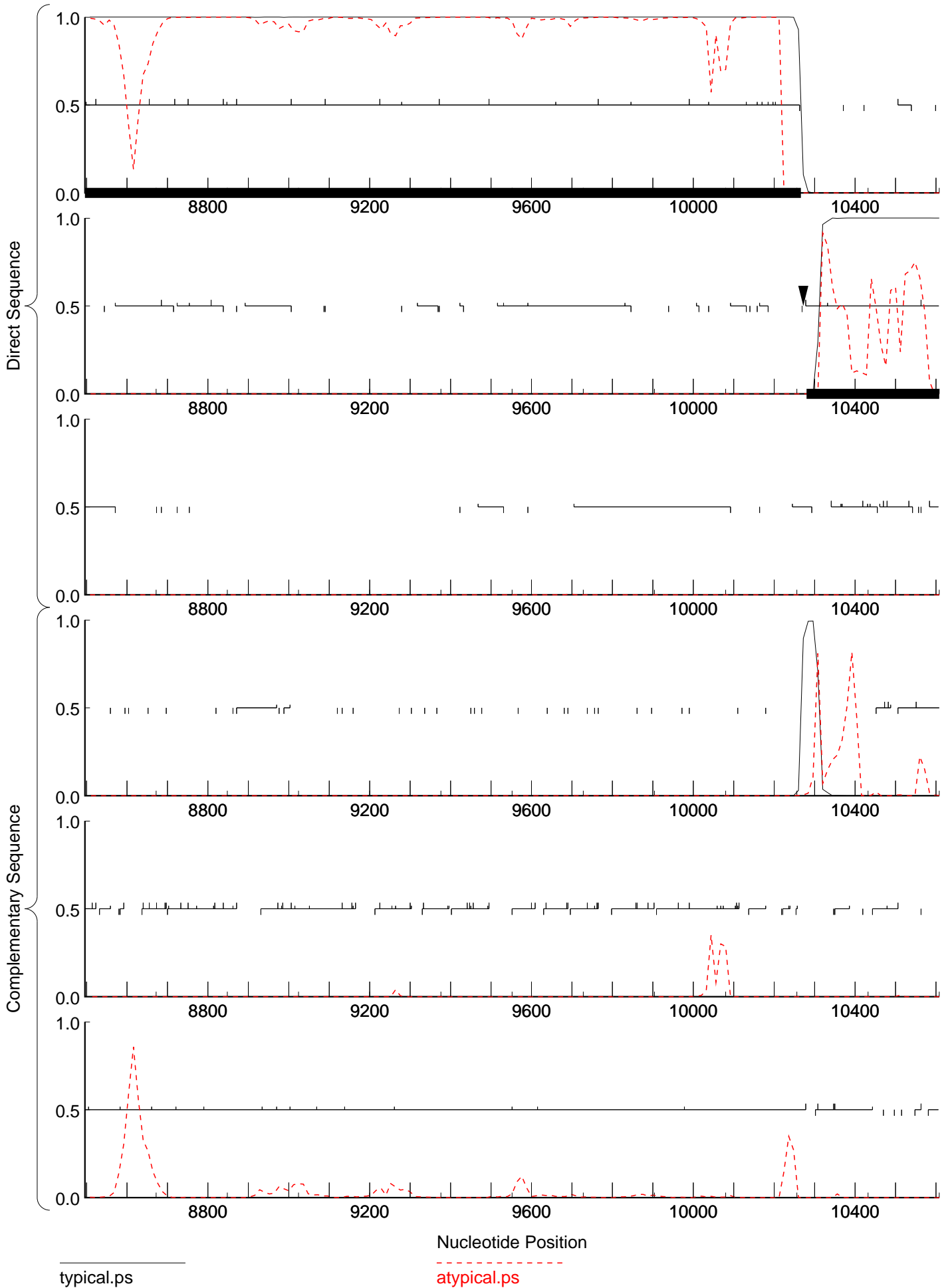
Send questions / comments to:
Dr. M. Borodovsky
Georgia Institute of Technology
School of Biology
Atlanta, GA 30332-0230

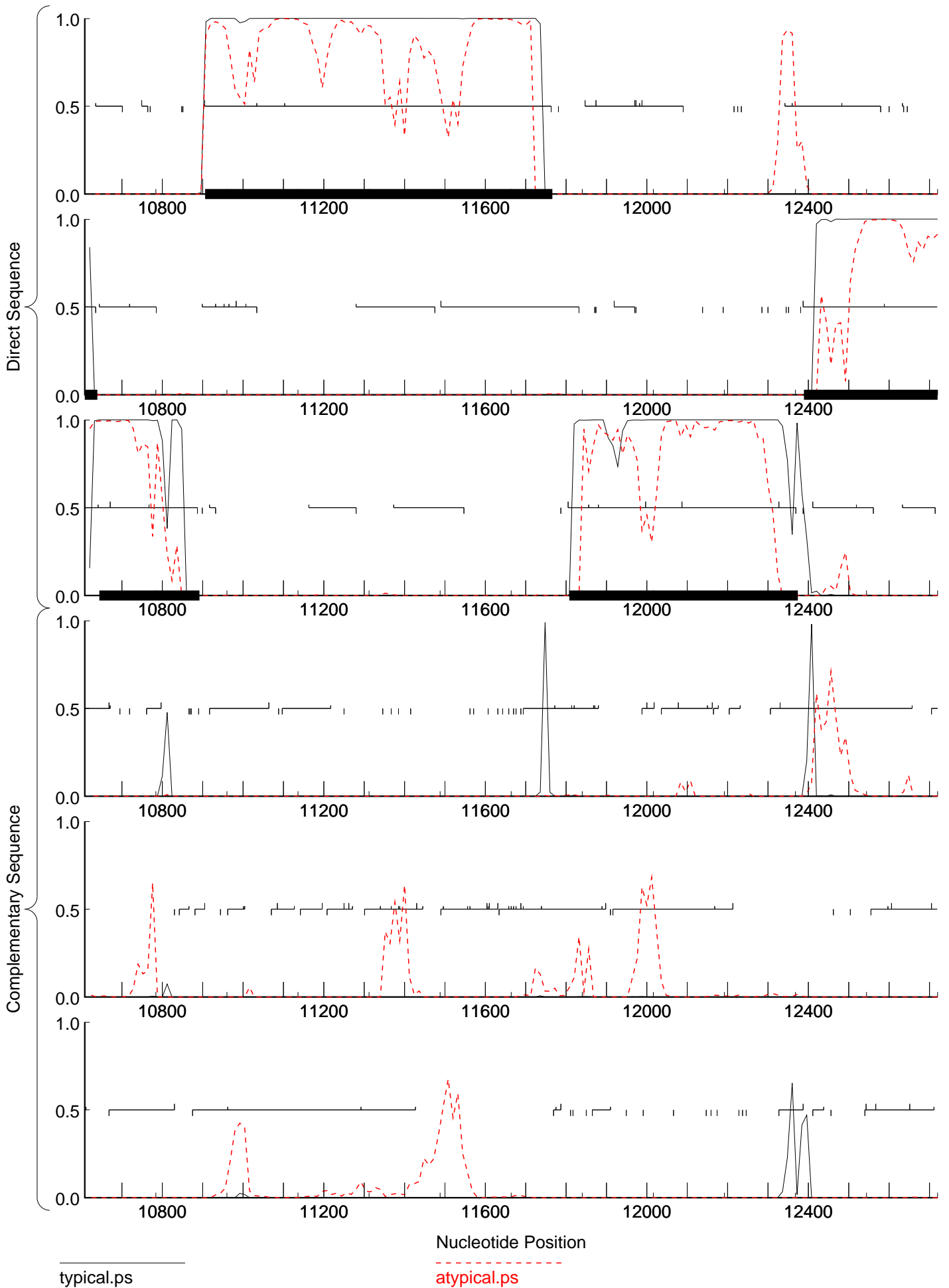


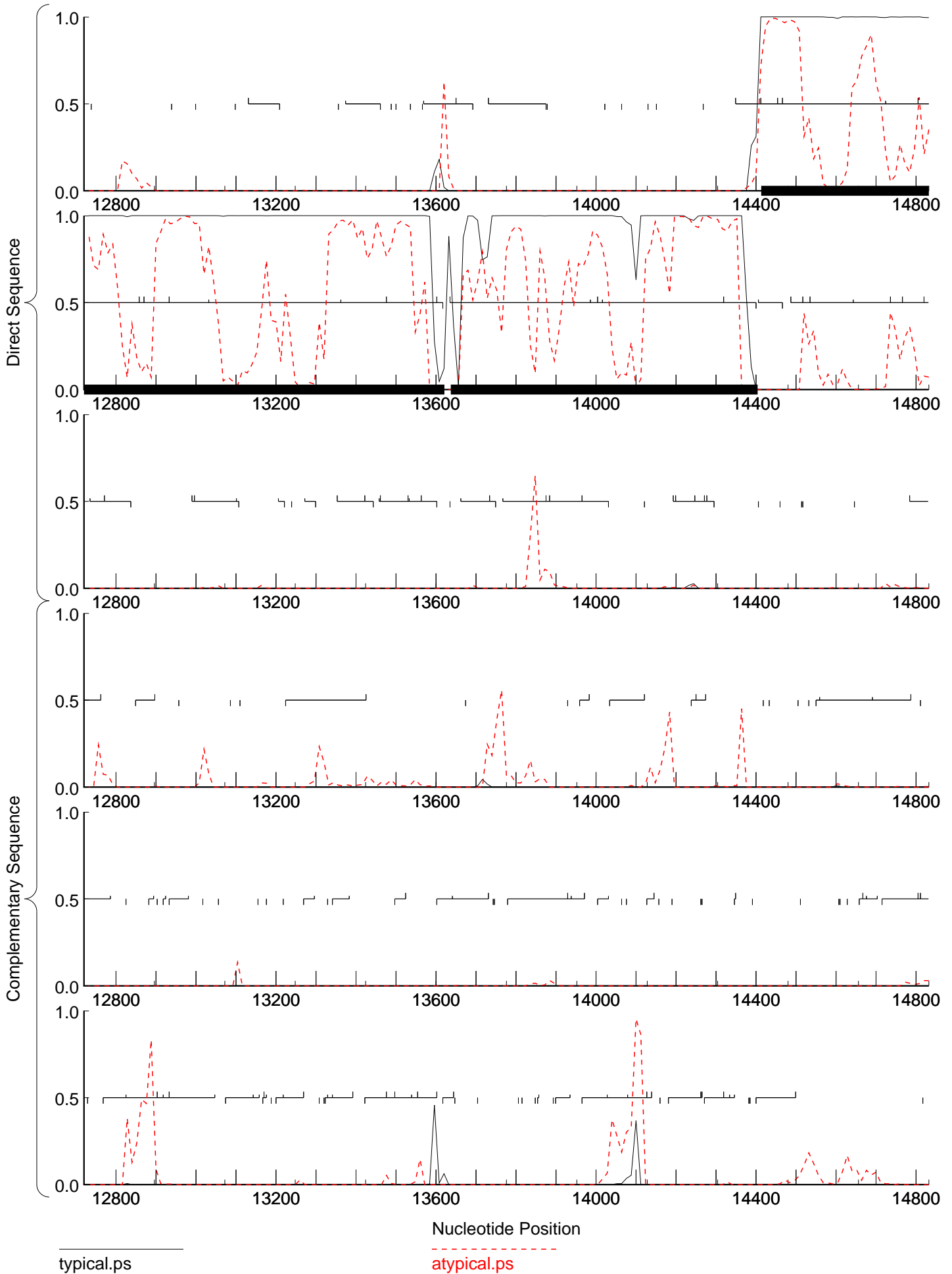


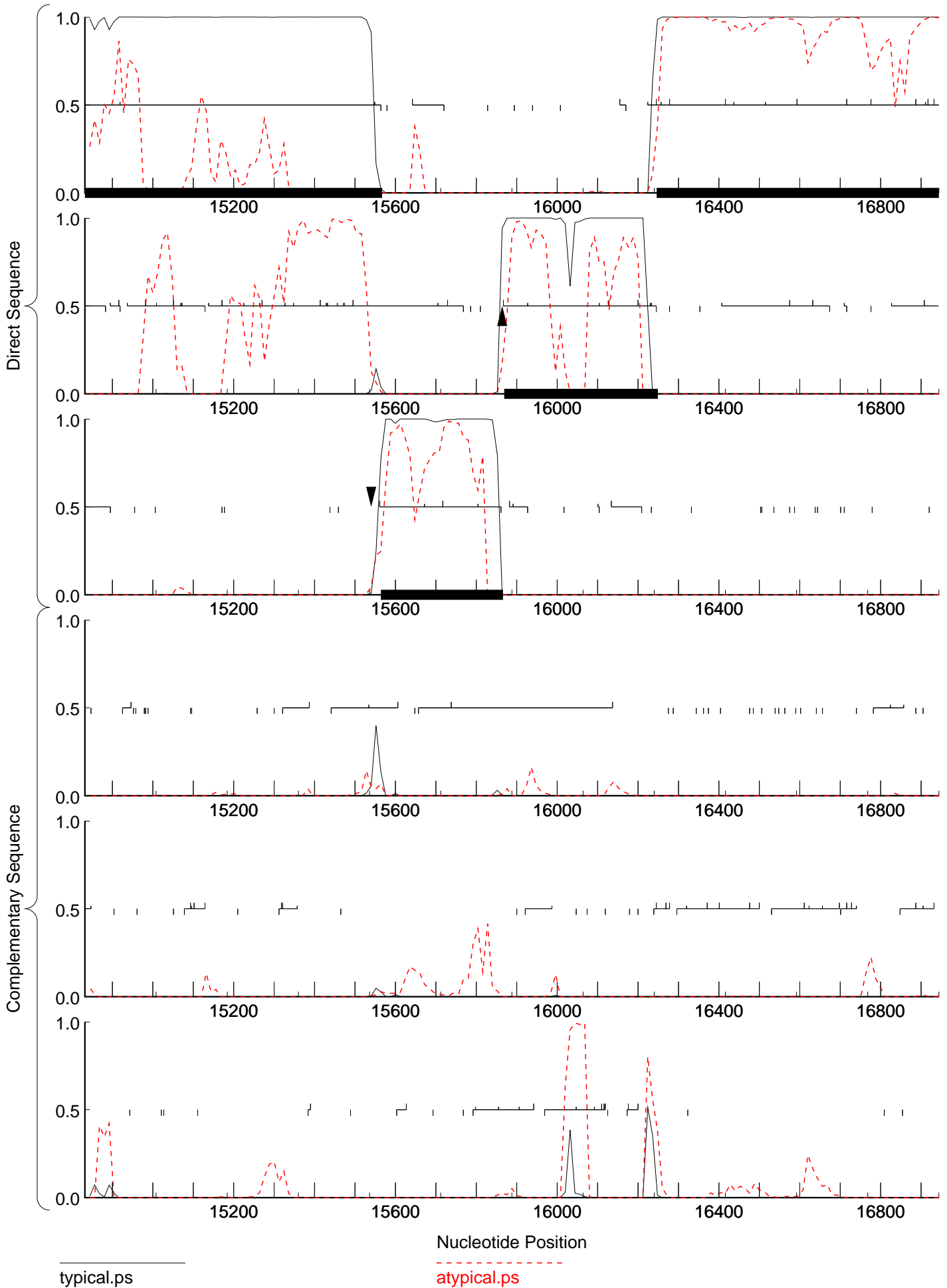


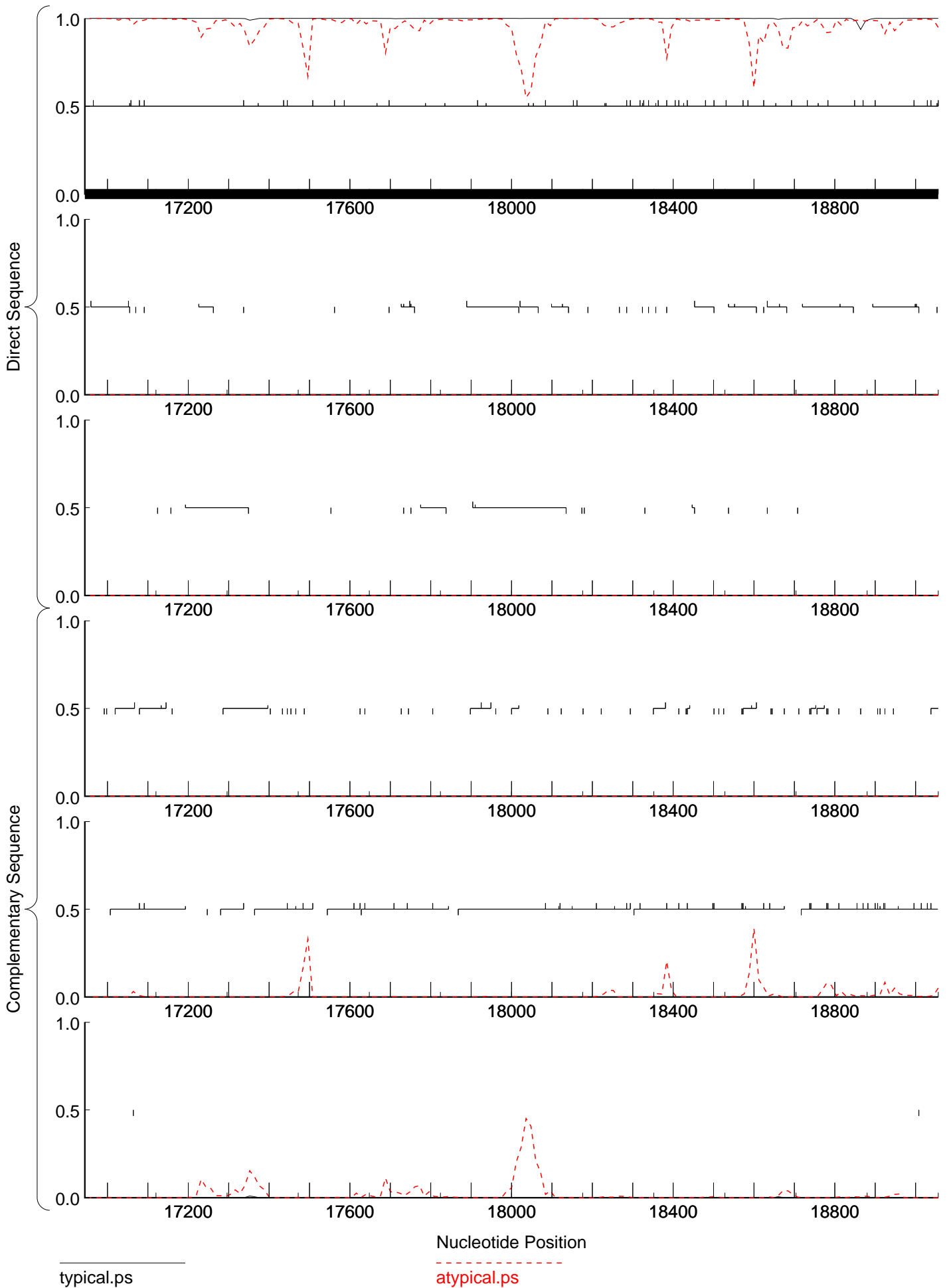


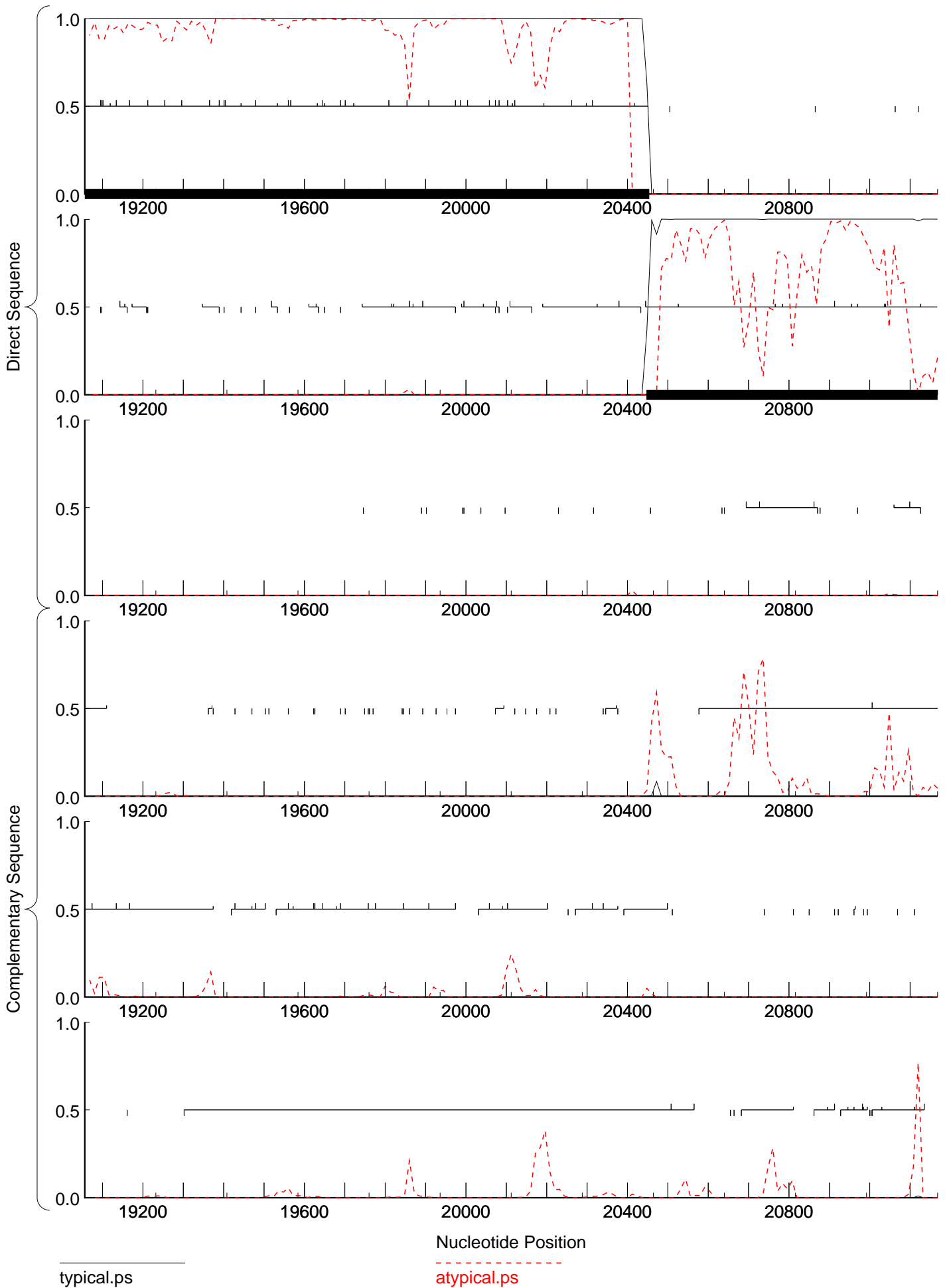


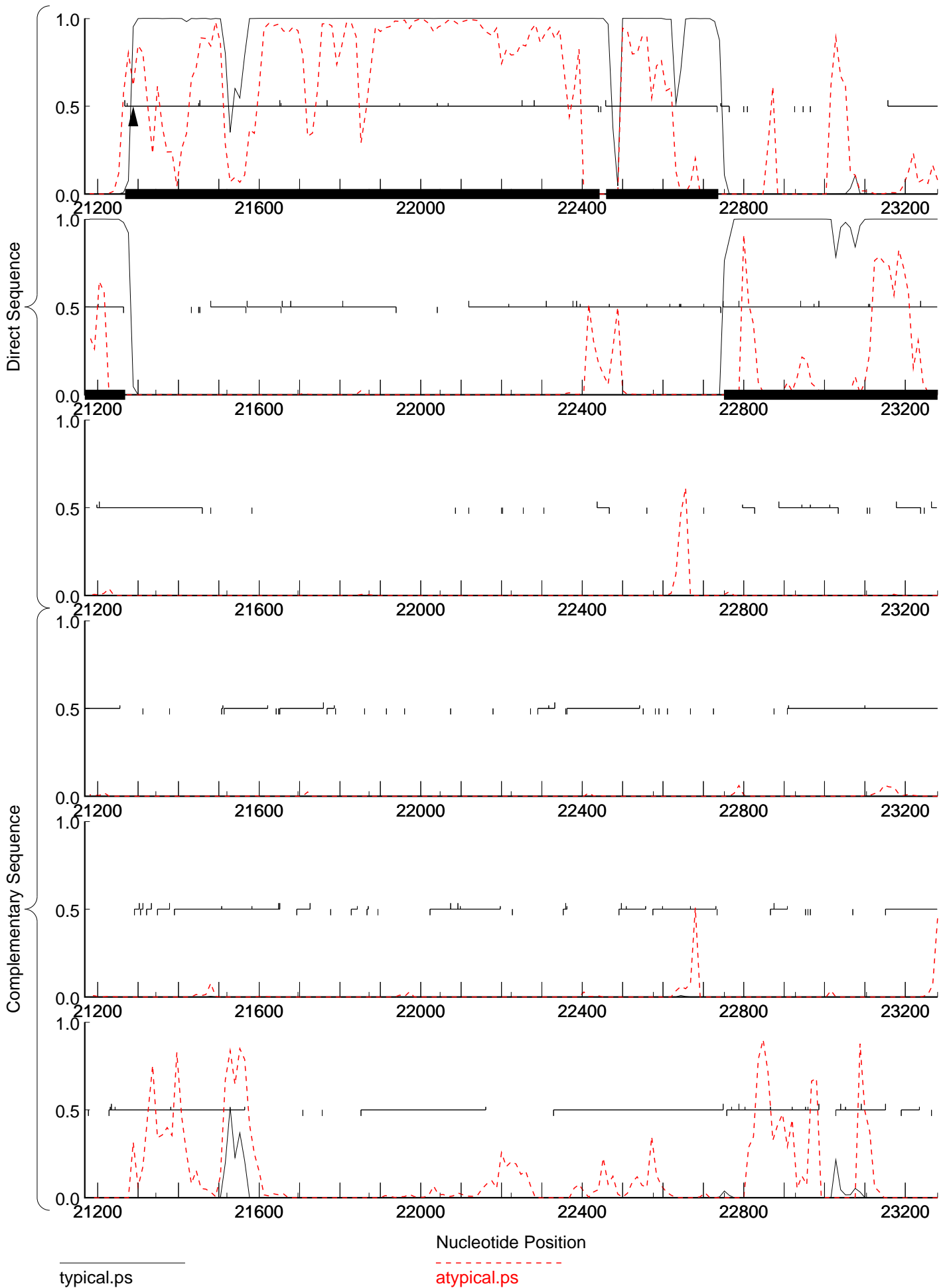


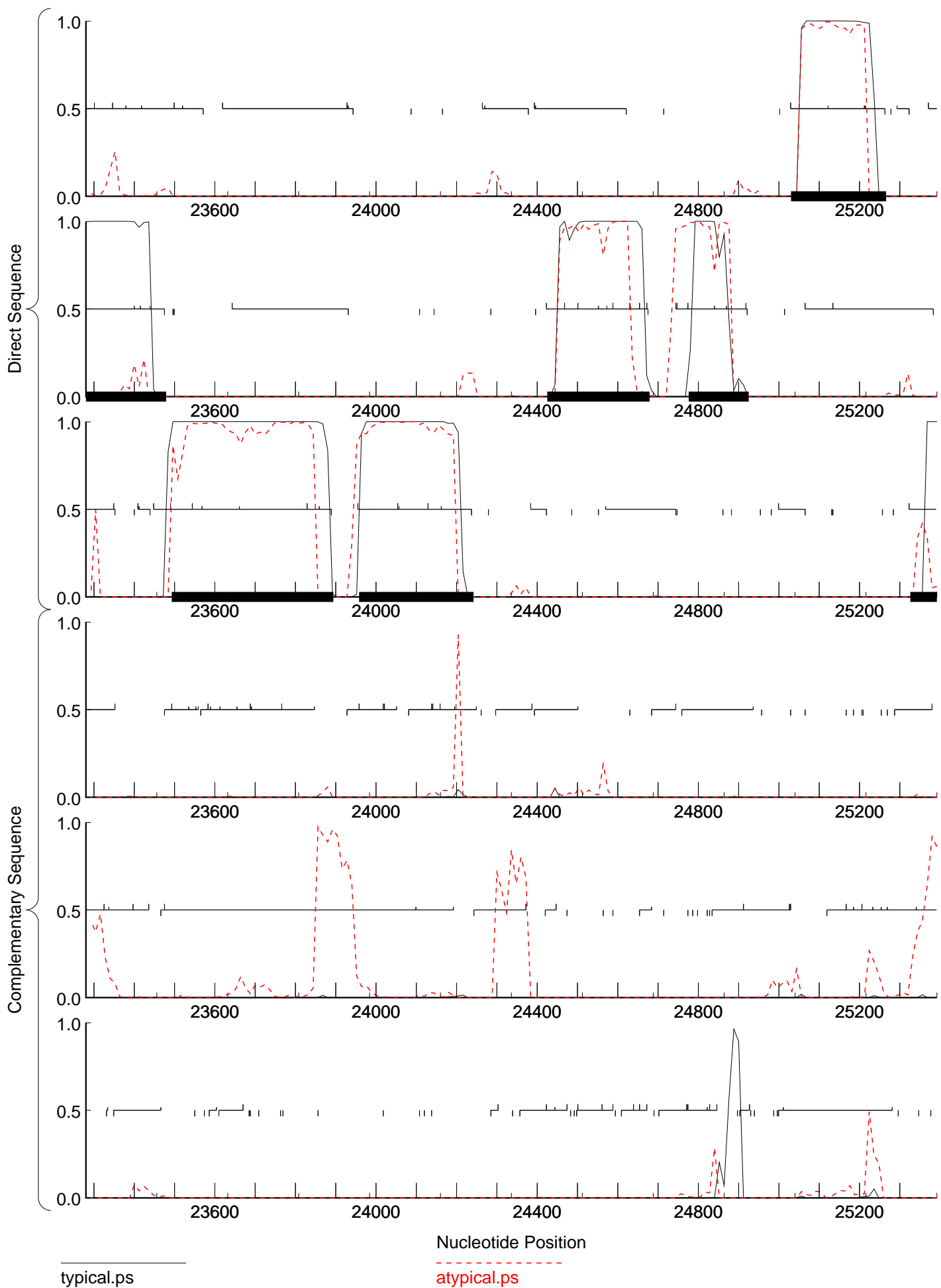






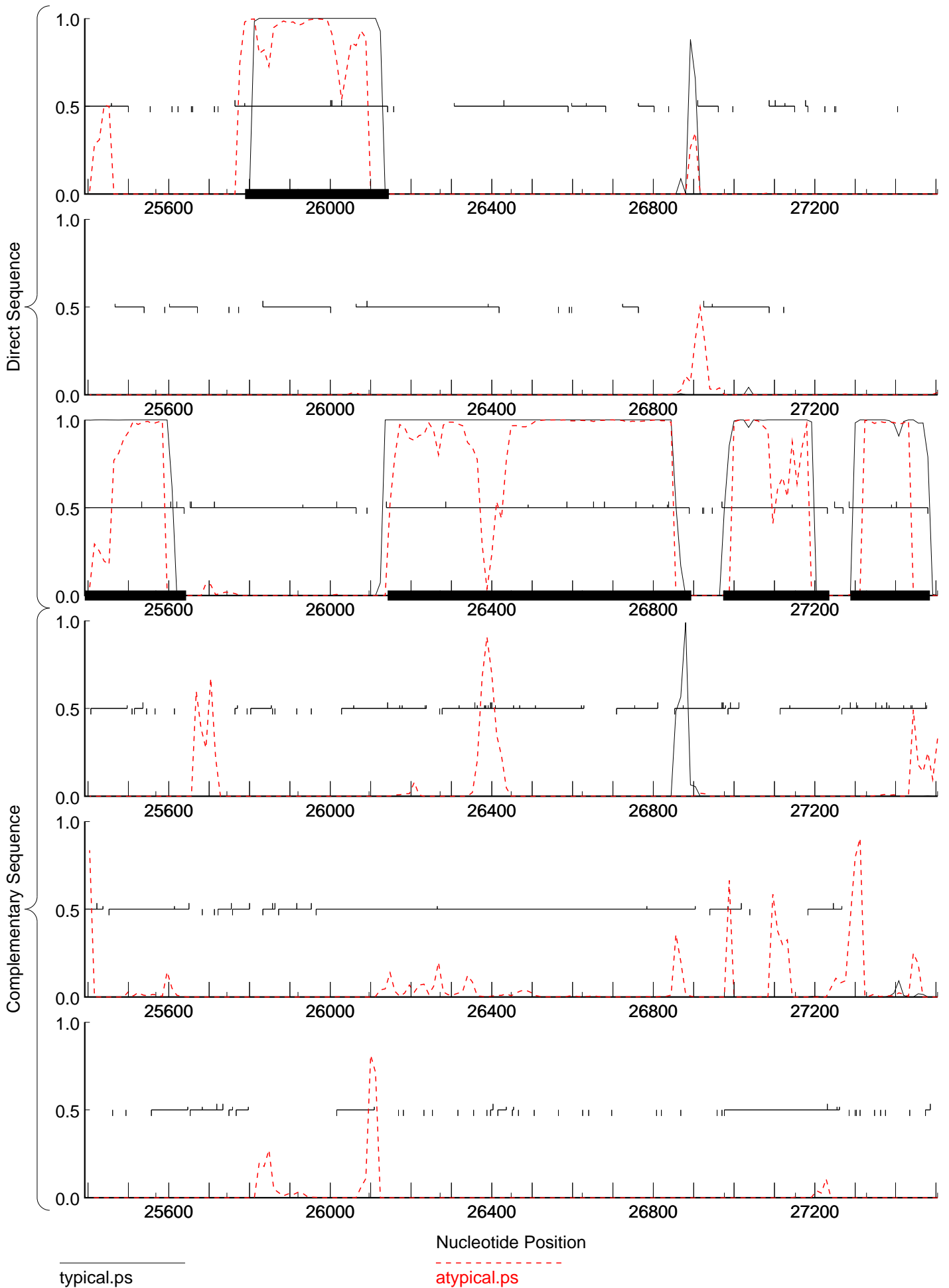


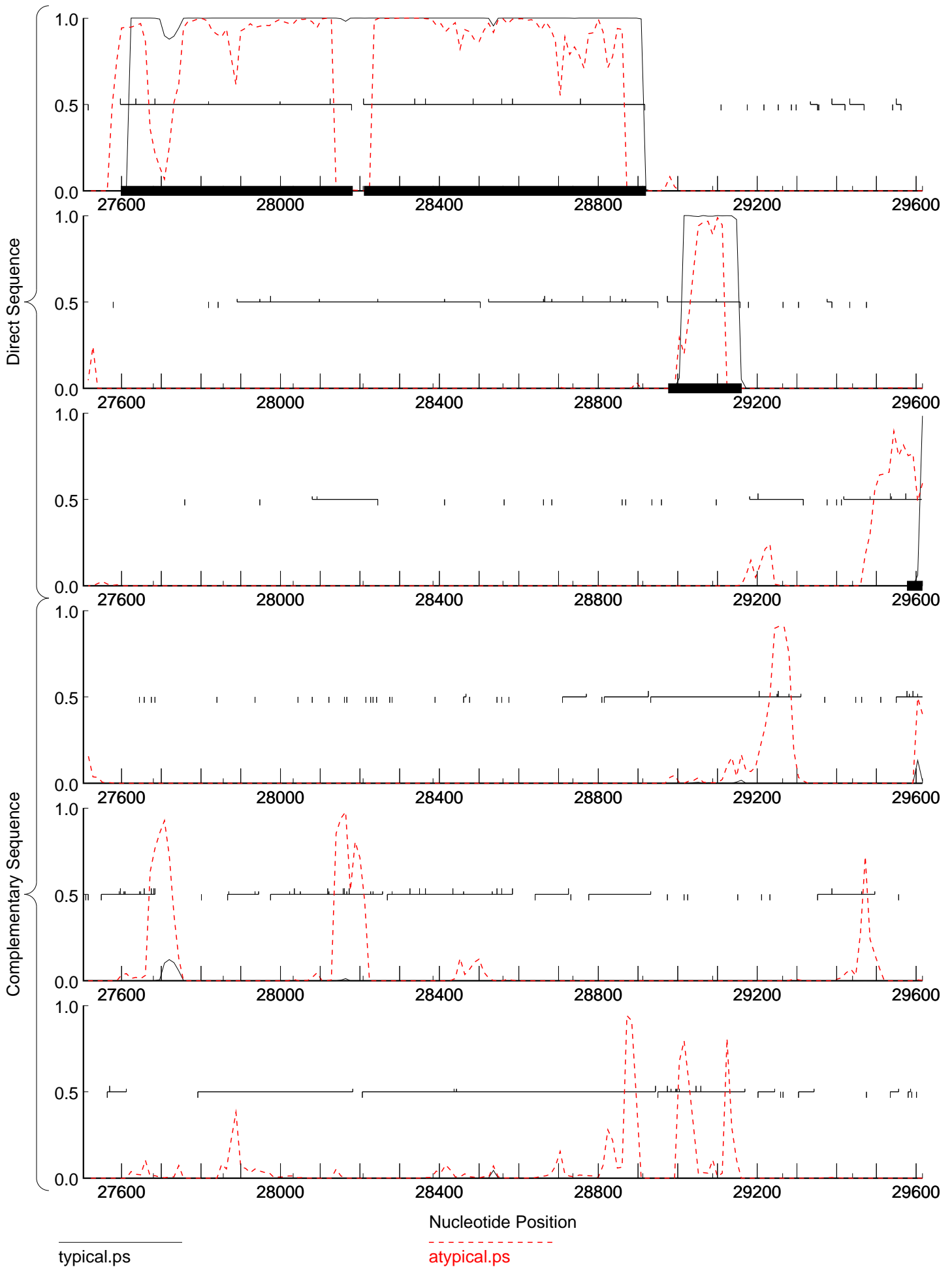


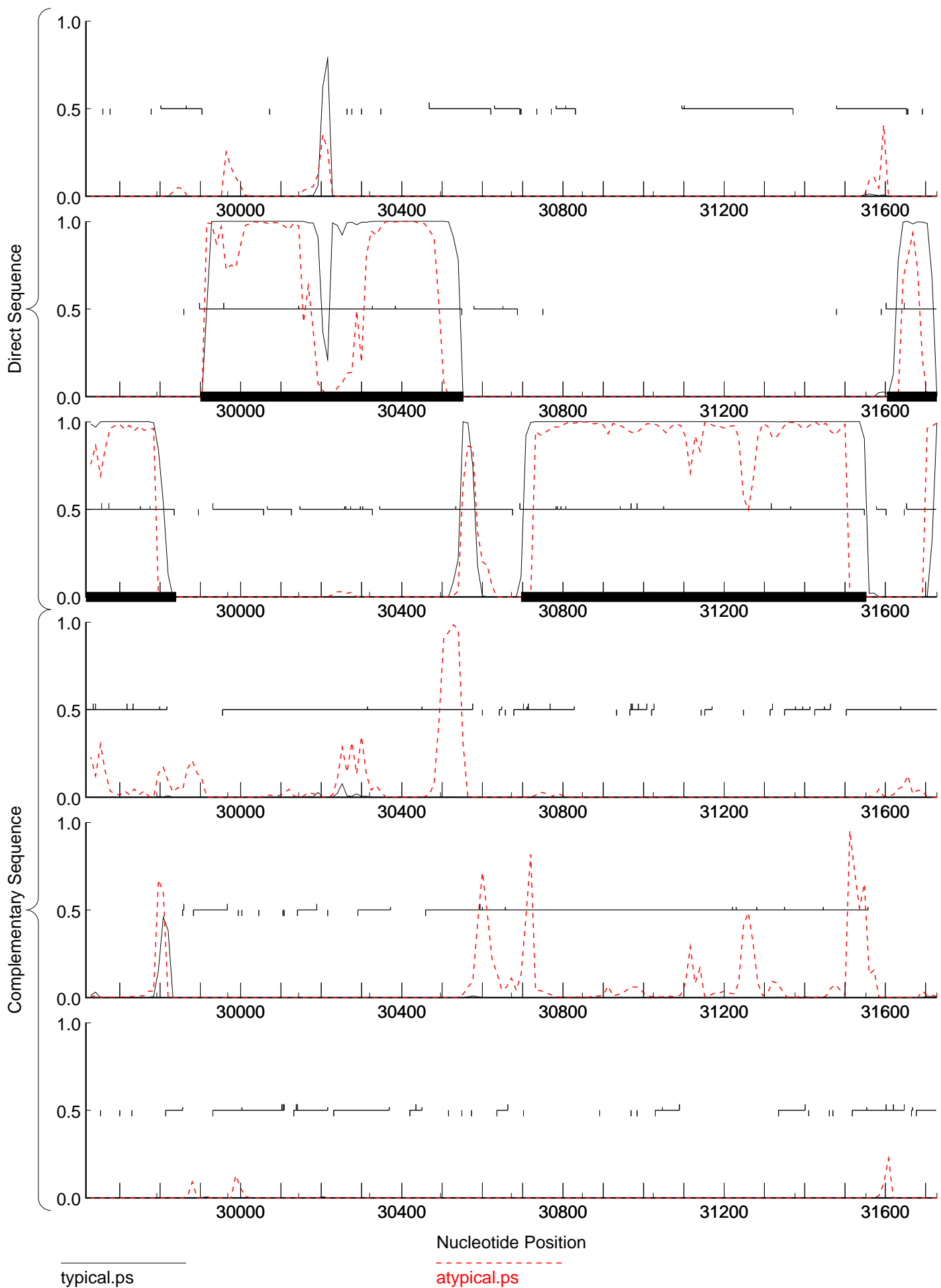


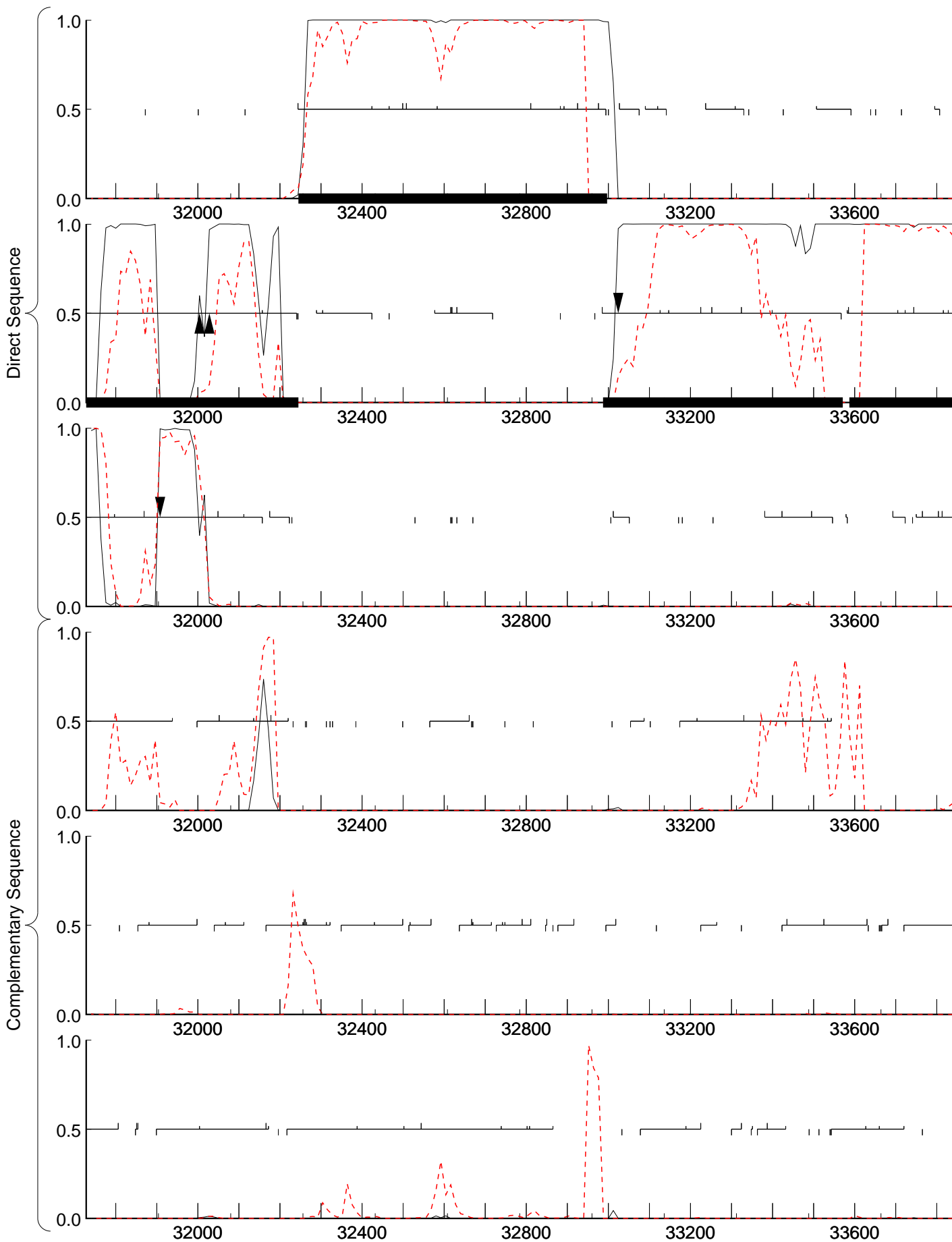
typical.ps

atypical.ps



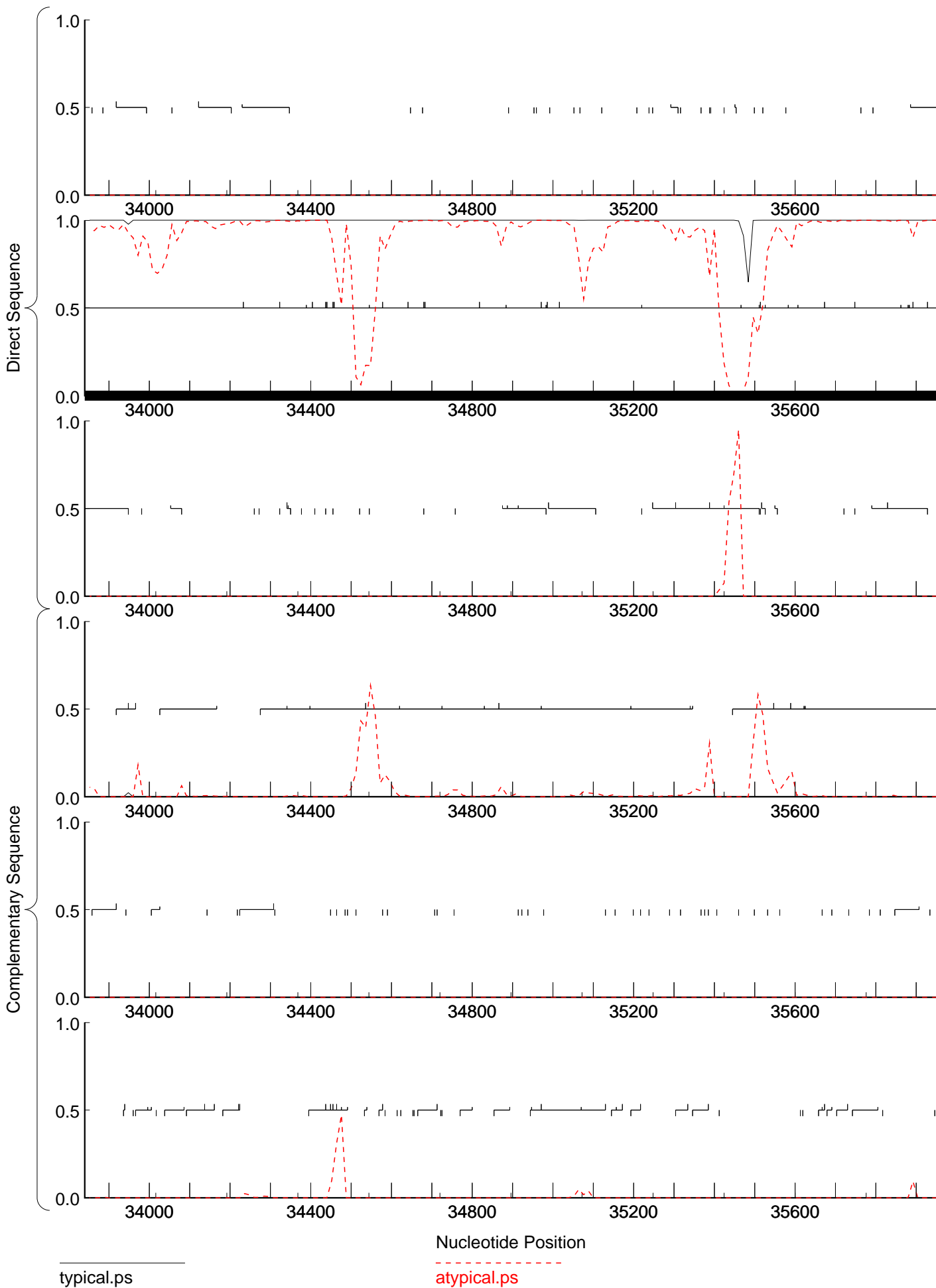






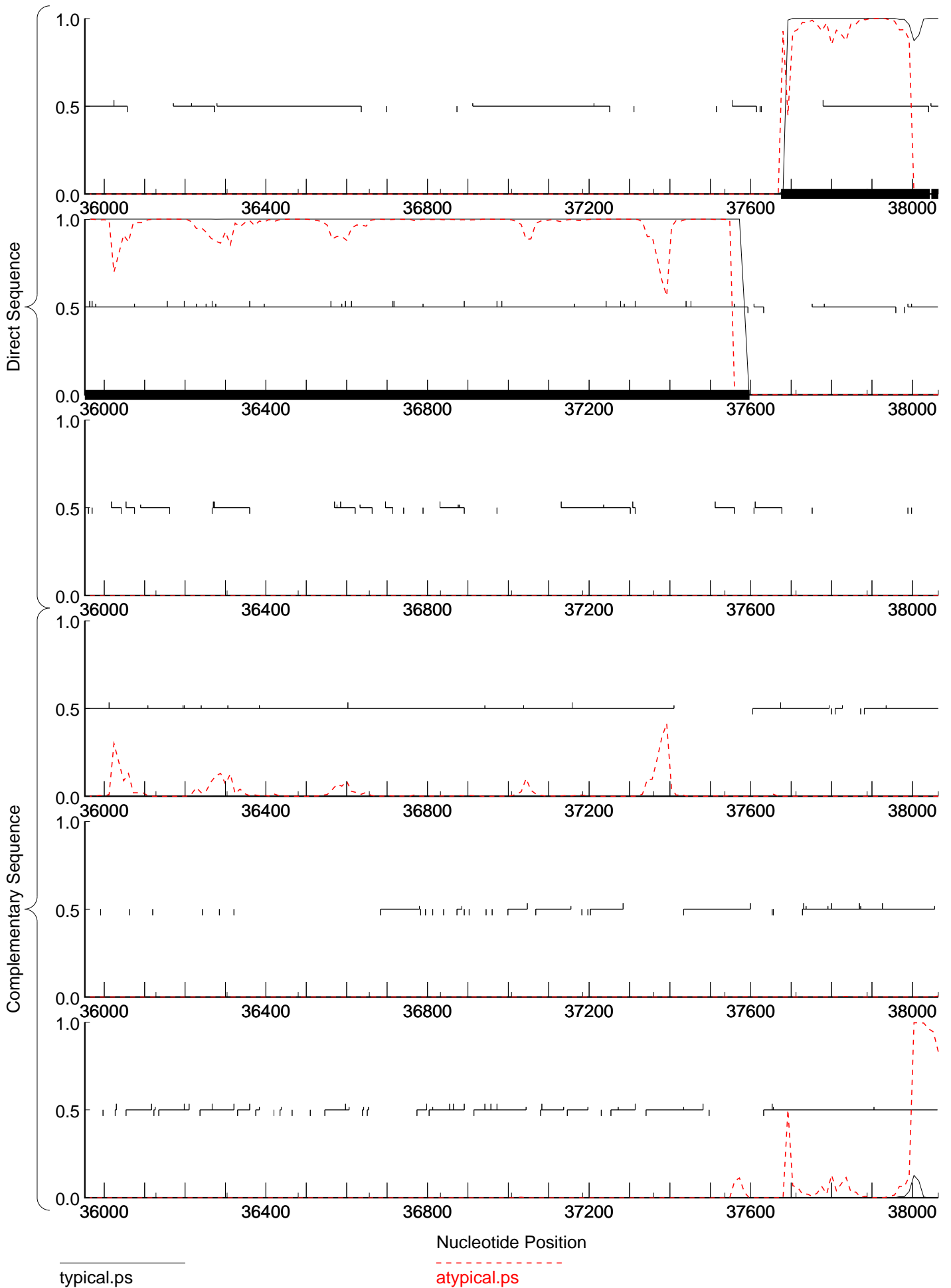
typical.ps

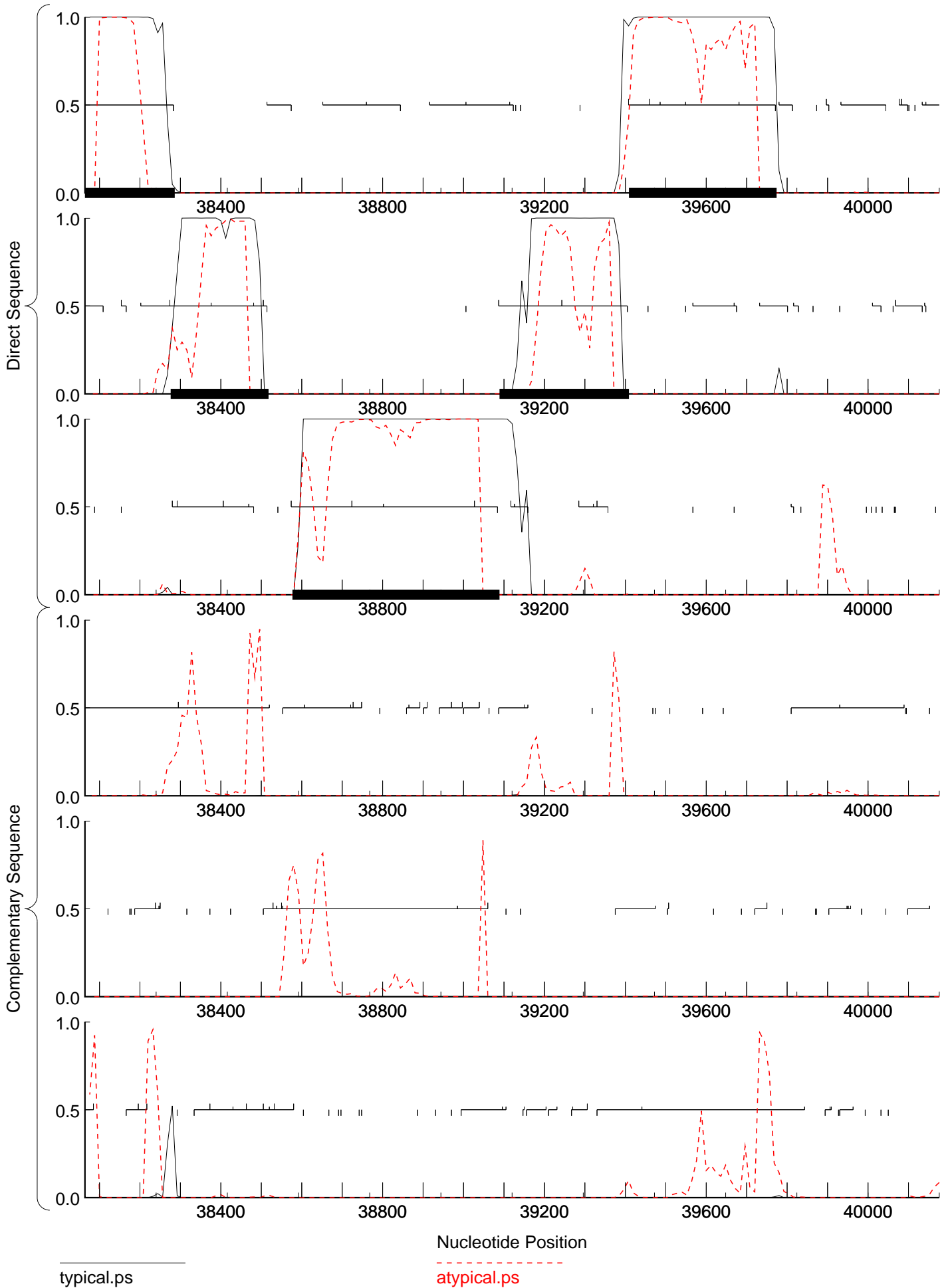
atypical.ps



typical.ps

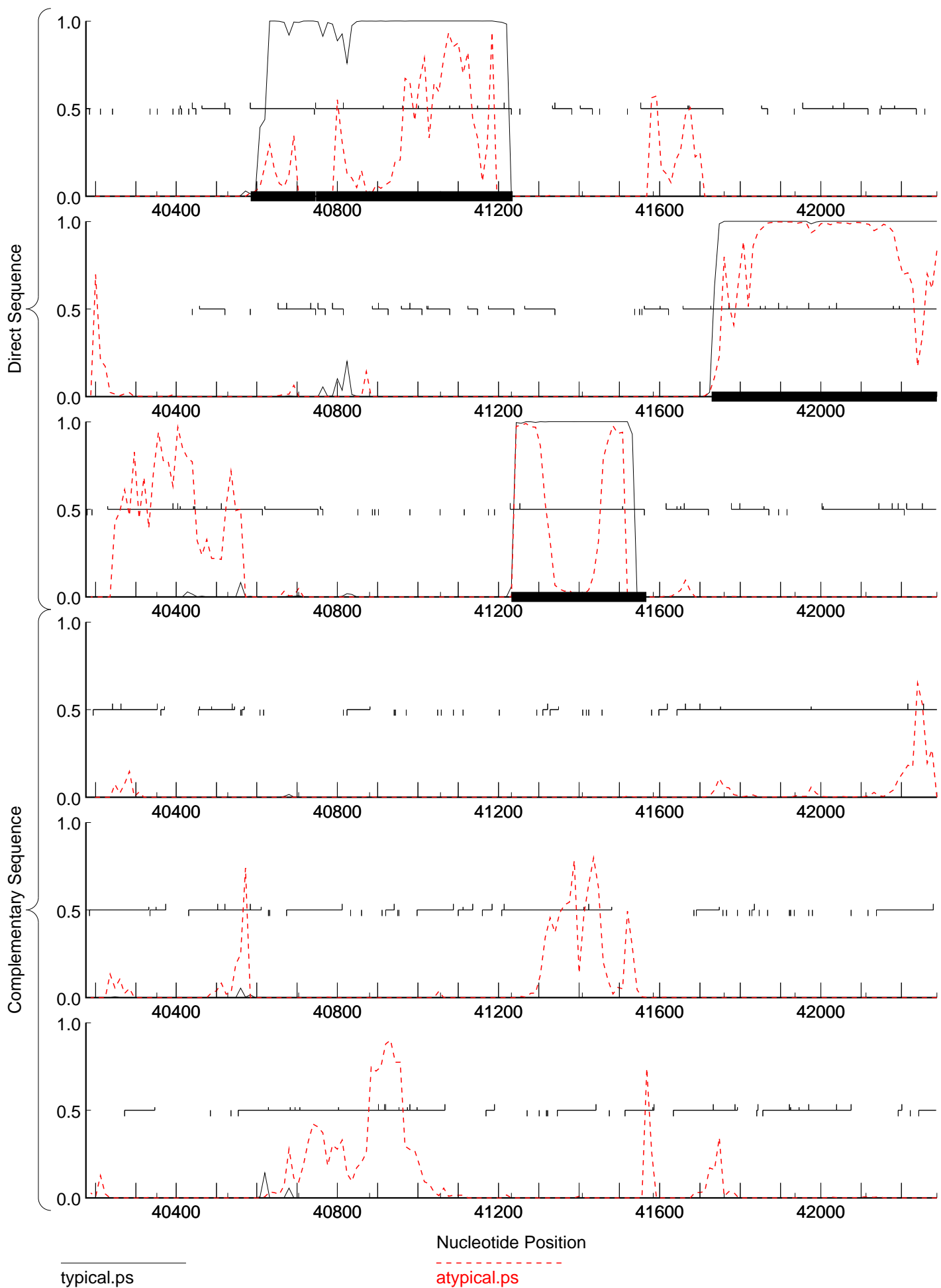
atypical.ps





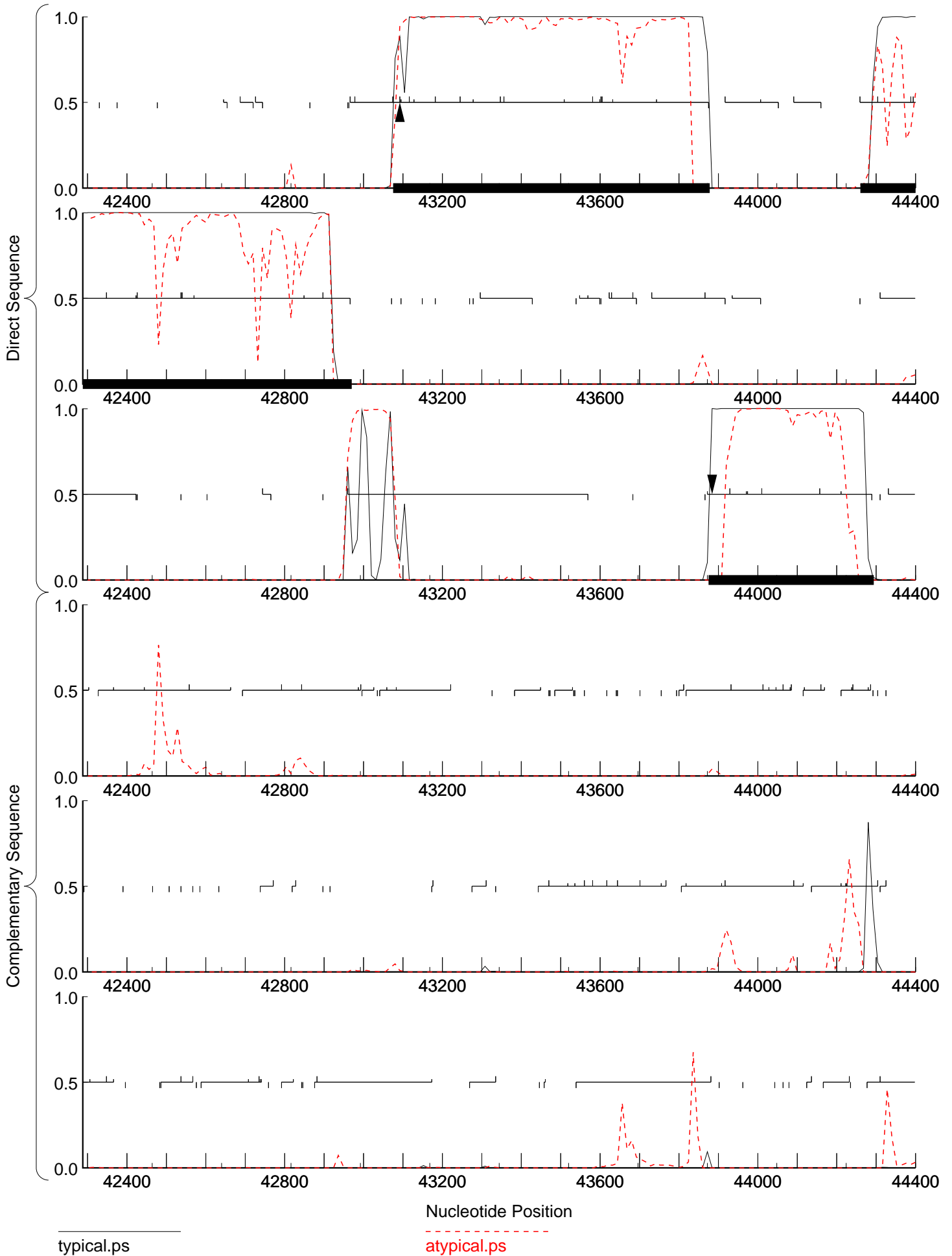
typical.ps

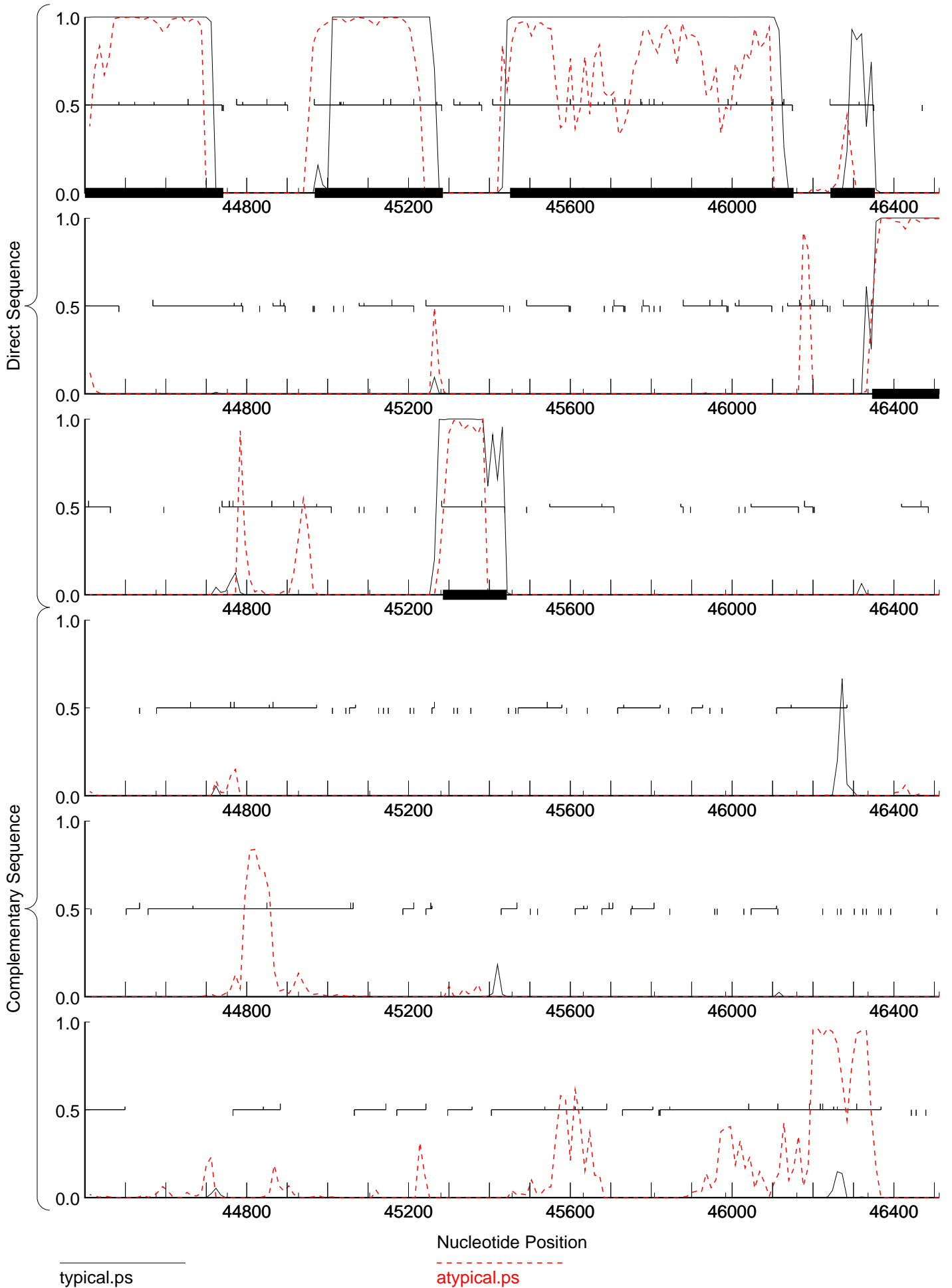
atypical.ps

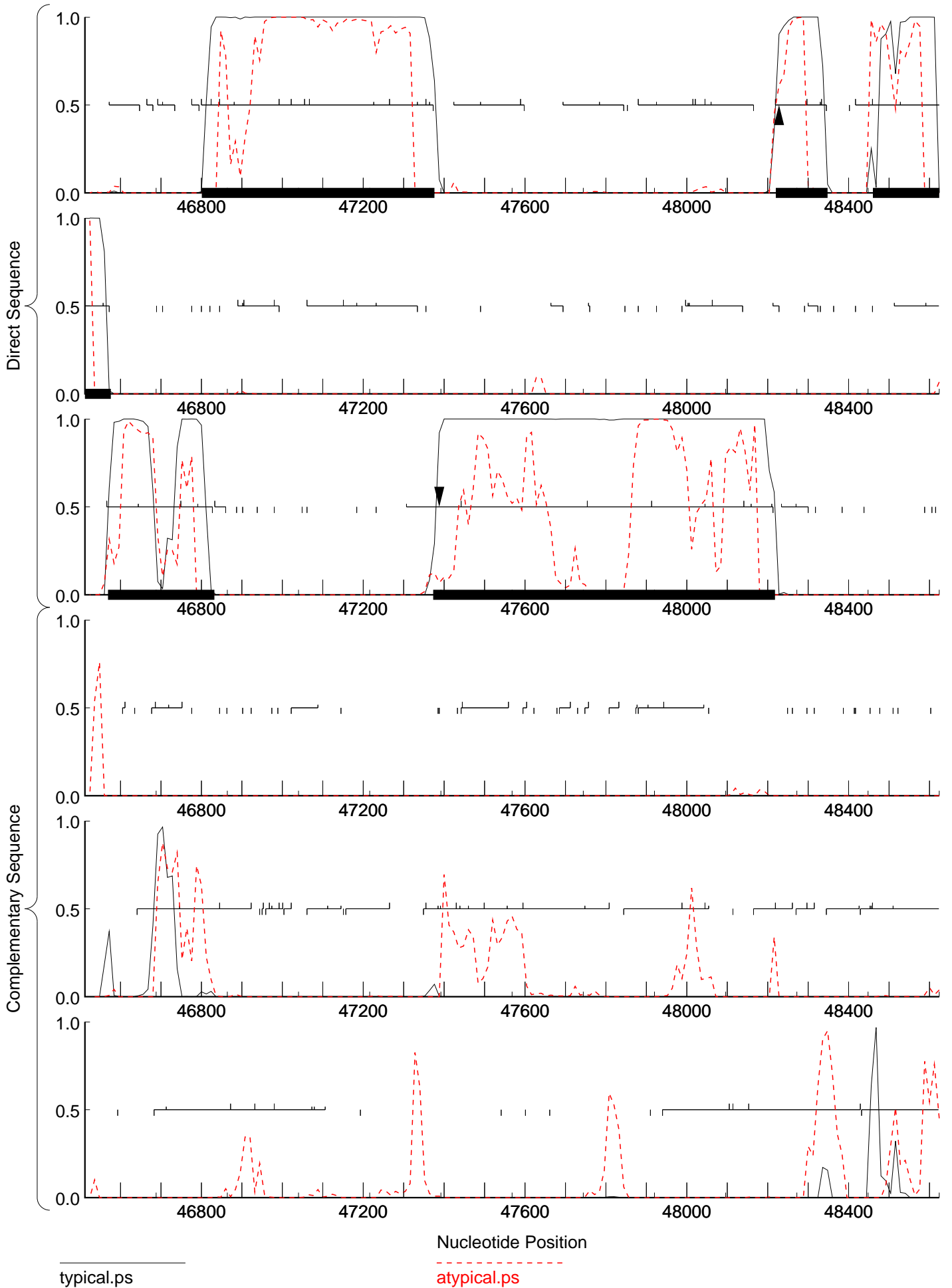


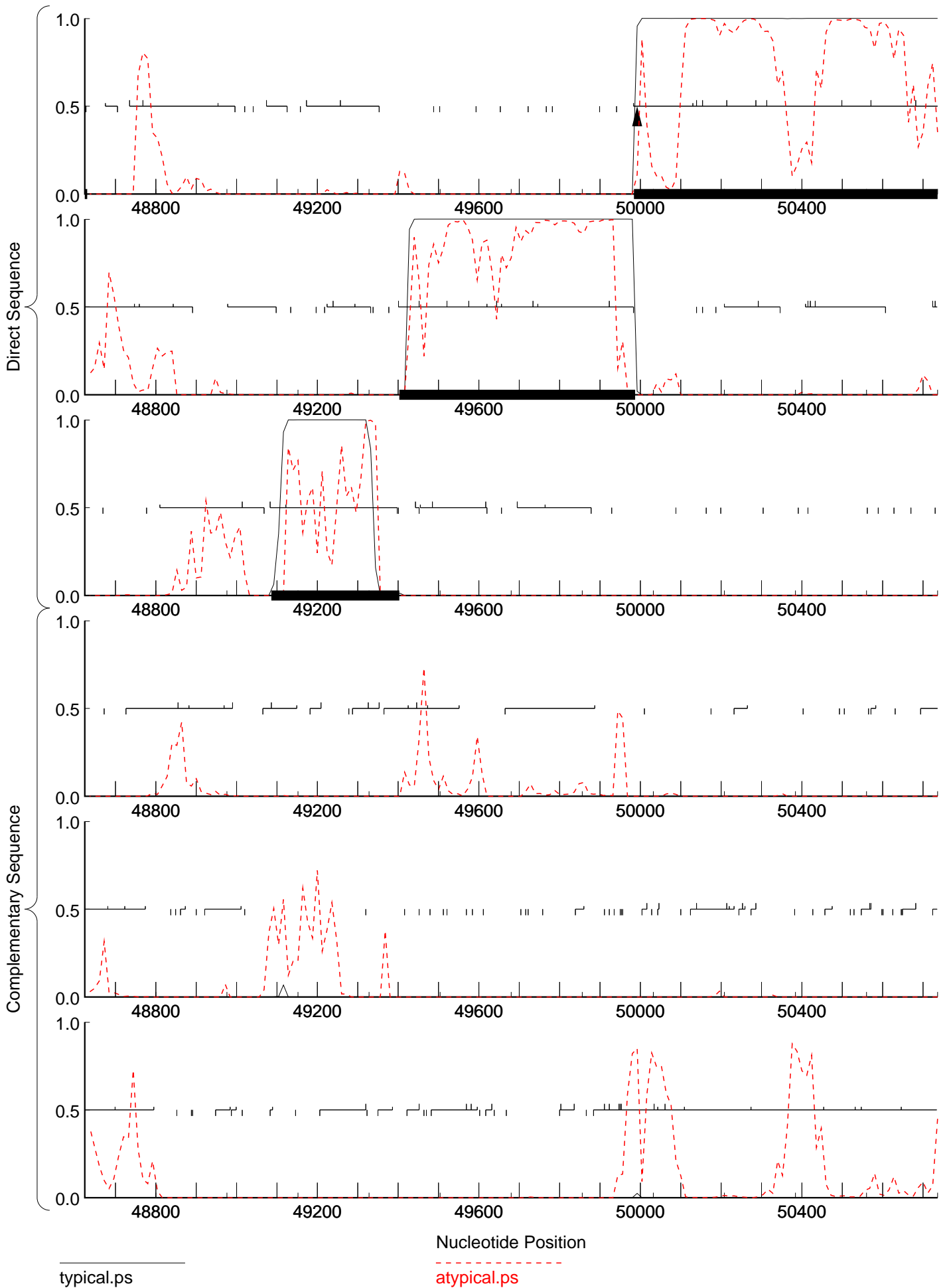
typical.ps

atypical.ps









typical.ps

atypical.ps

