

GeneMark

Version 2.5p (09.08.06)

Copyright 1993 - M. Borodovsky, J. McIninch

PROGRAM INFORMATION

Sequence : Gordonia phage BENTherdunthat complete sequence, 54867 bp including 10-base 3' overhang (CT
Analysis Date : 1/18/18 at 20:21:13
Pages : 27
Sequence Length : 54867 bp
GC Content : 63.36%

Window Length : 96 bp
Window Step : 12 bp
Threshold Value : 0.500

PS-Version : 1.2

GeneMark Options : PostScript graph,
Mark ORFs / splice sites,
List ORFs,
List regions and/or splice sites,

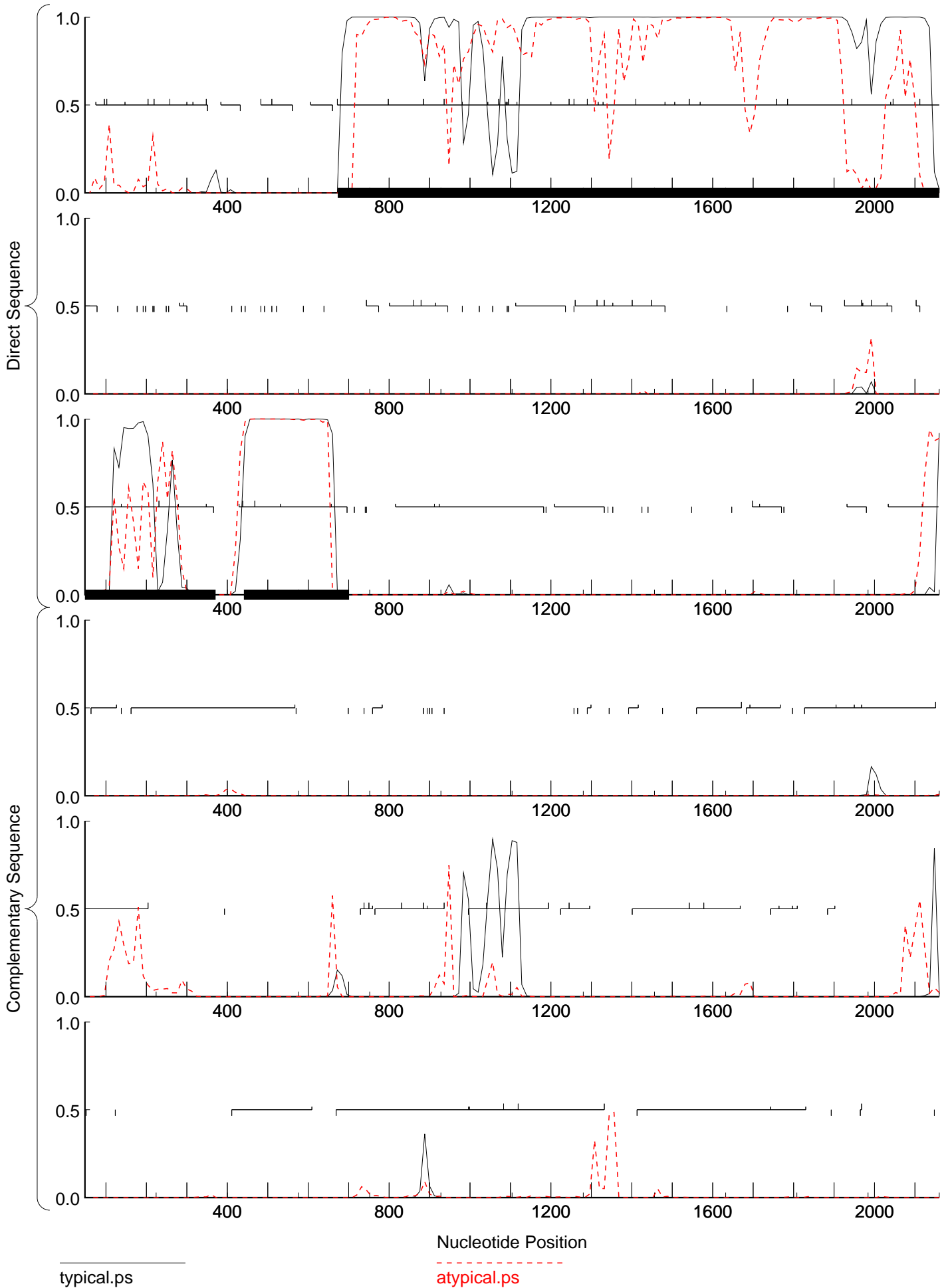
MATRIX INFORMATION

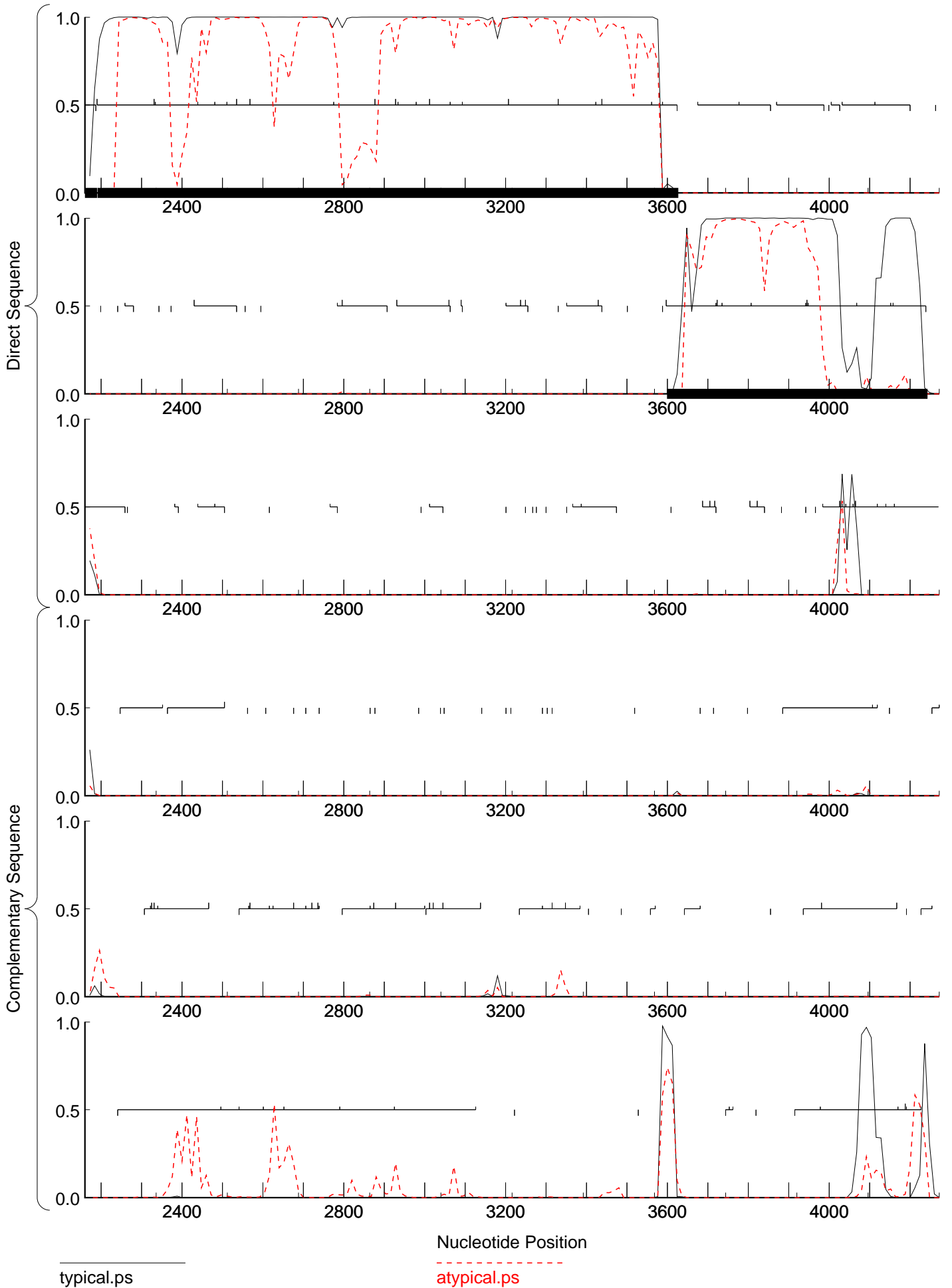
Matrix : -
Author : -
Order : 4

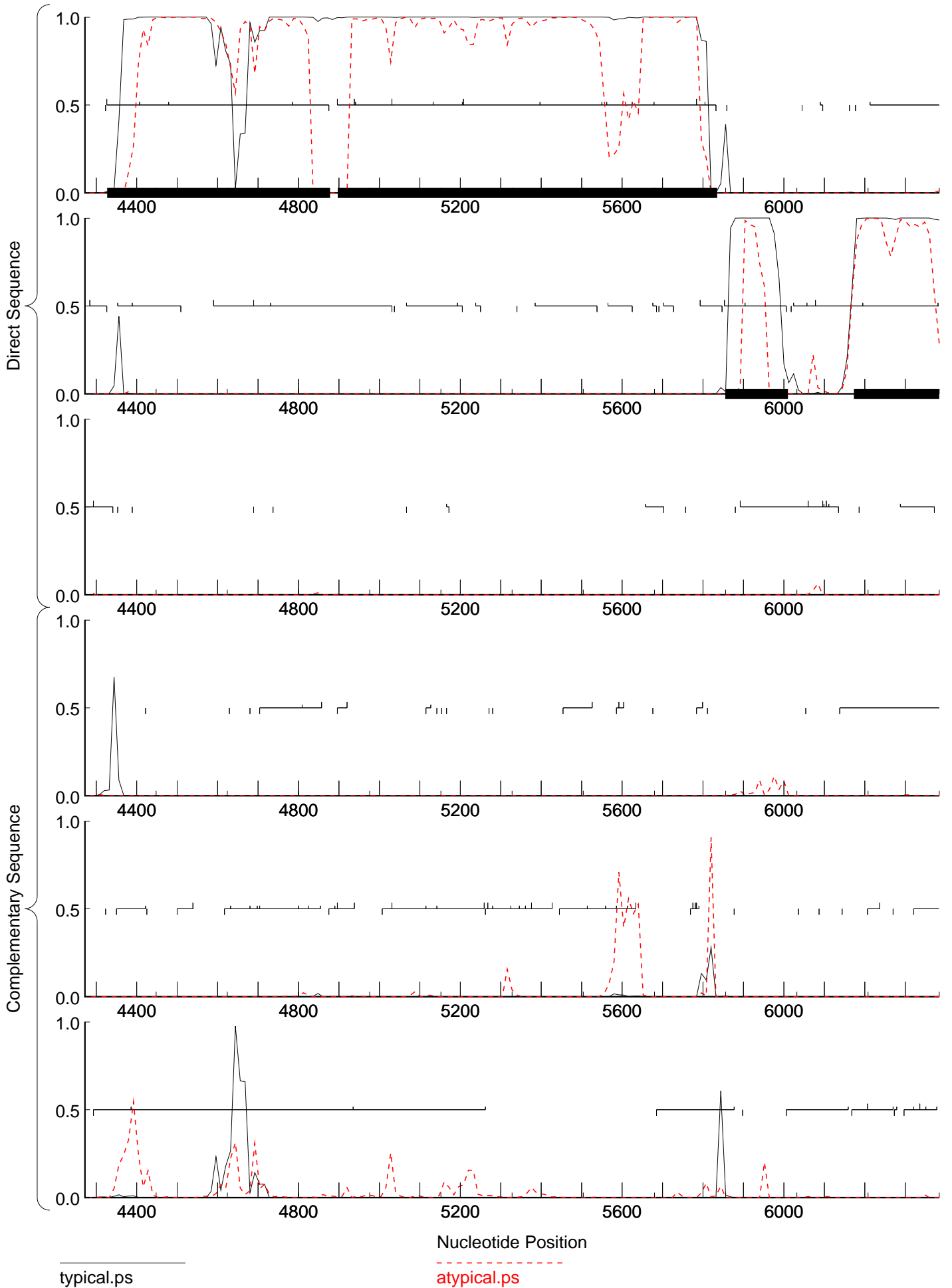
Send questions / comments to:
Dr. M. Borodovsky
Georgia Institute of Technology
School of Biology
Atlanta, GA 30332-0230

Matrix notes & comments

Training set derived by GeneMarkS, 4.30 October 2014
Thu Jan 18 20:21:13 2018

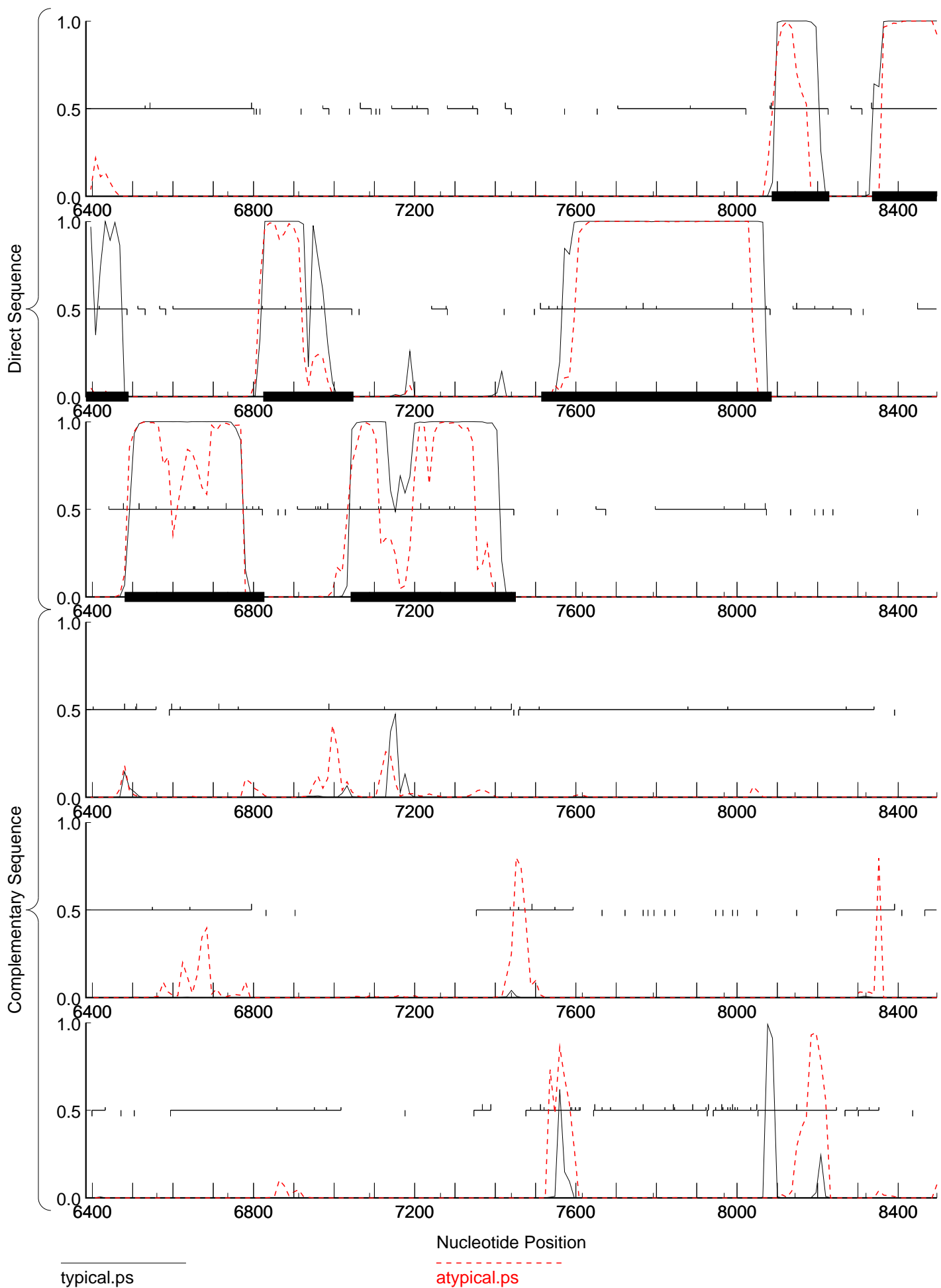






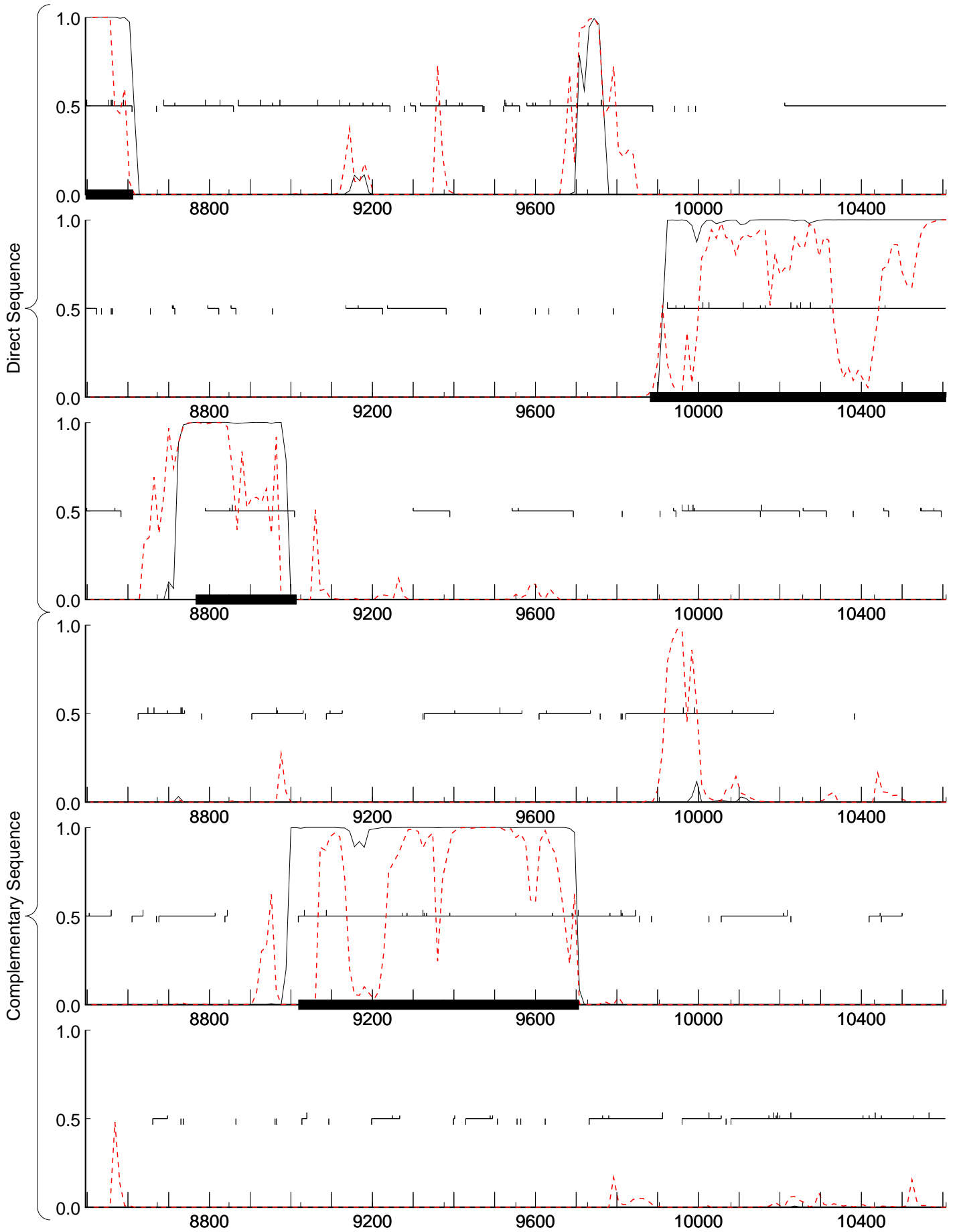
typical.ps

atypical.ps



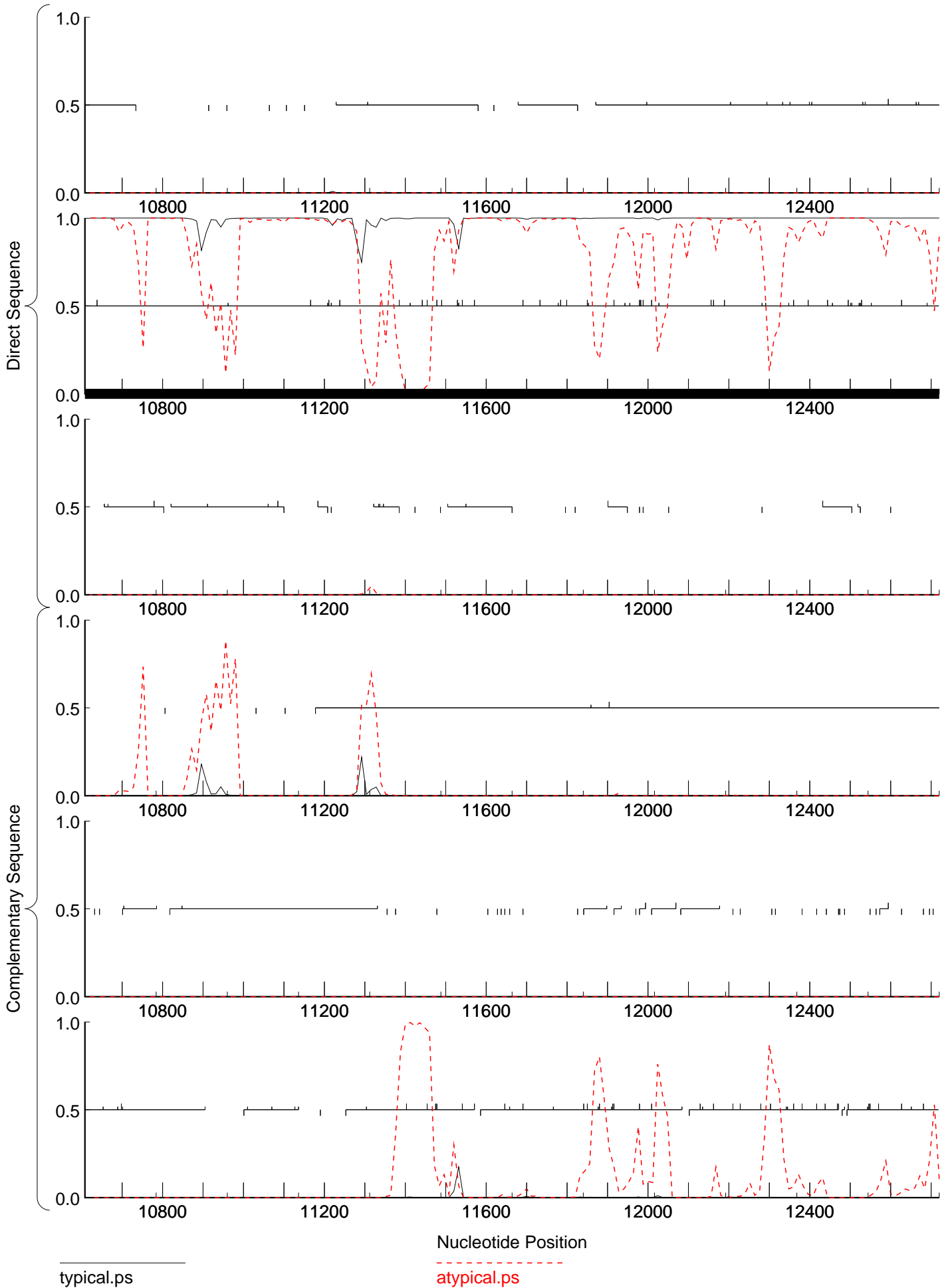
typical.ps

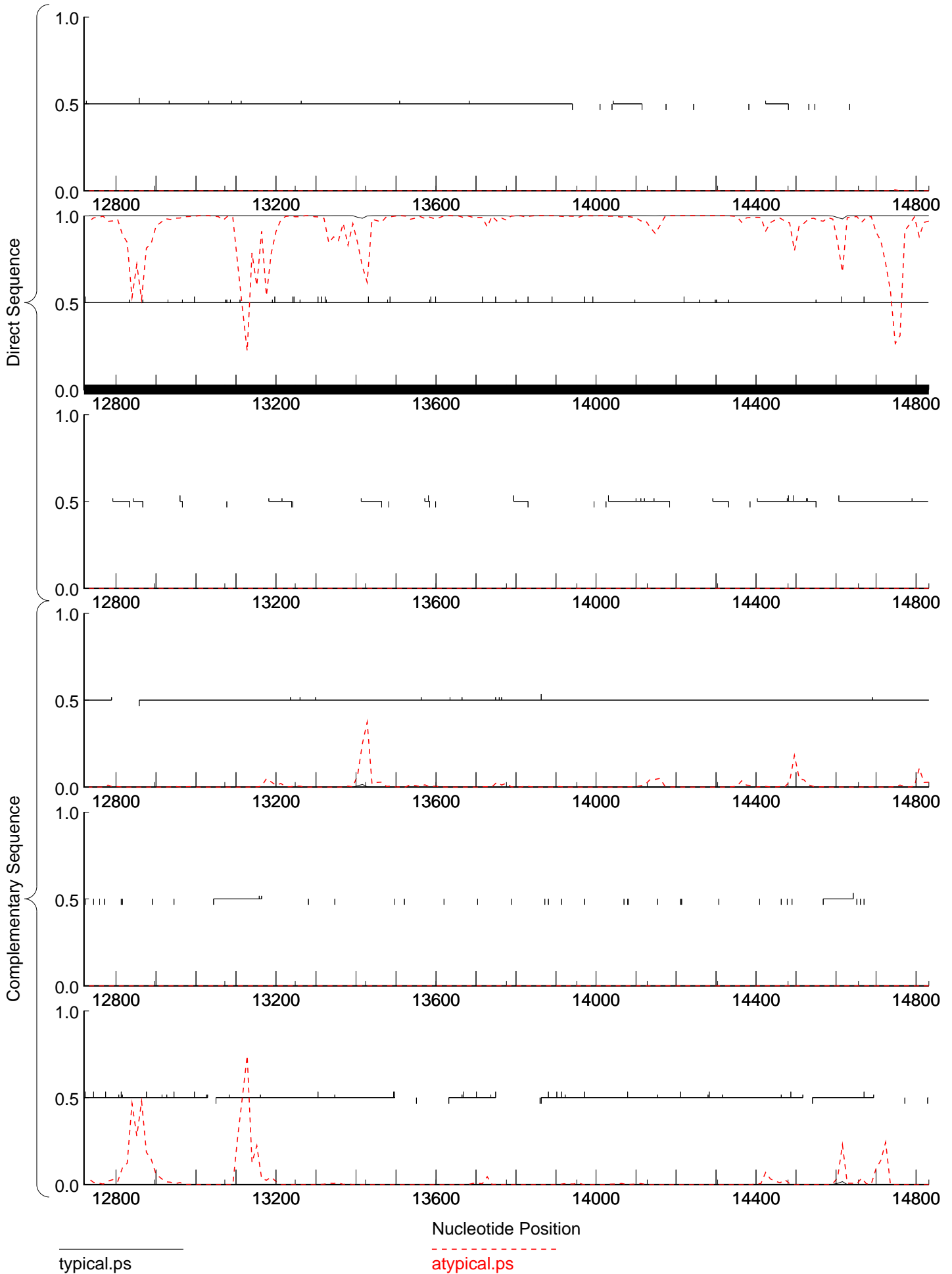
atypical.ps

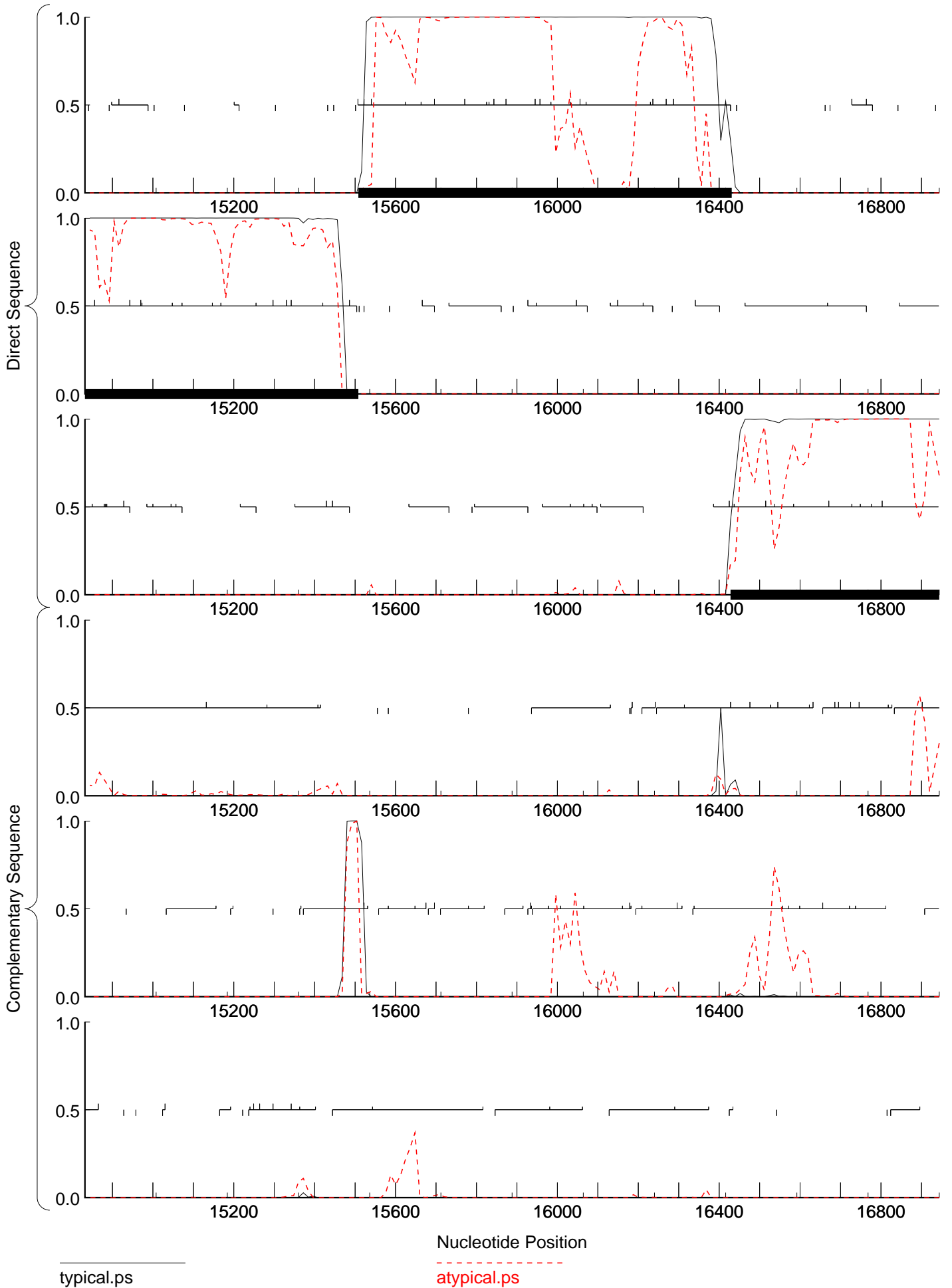


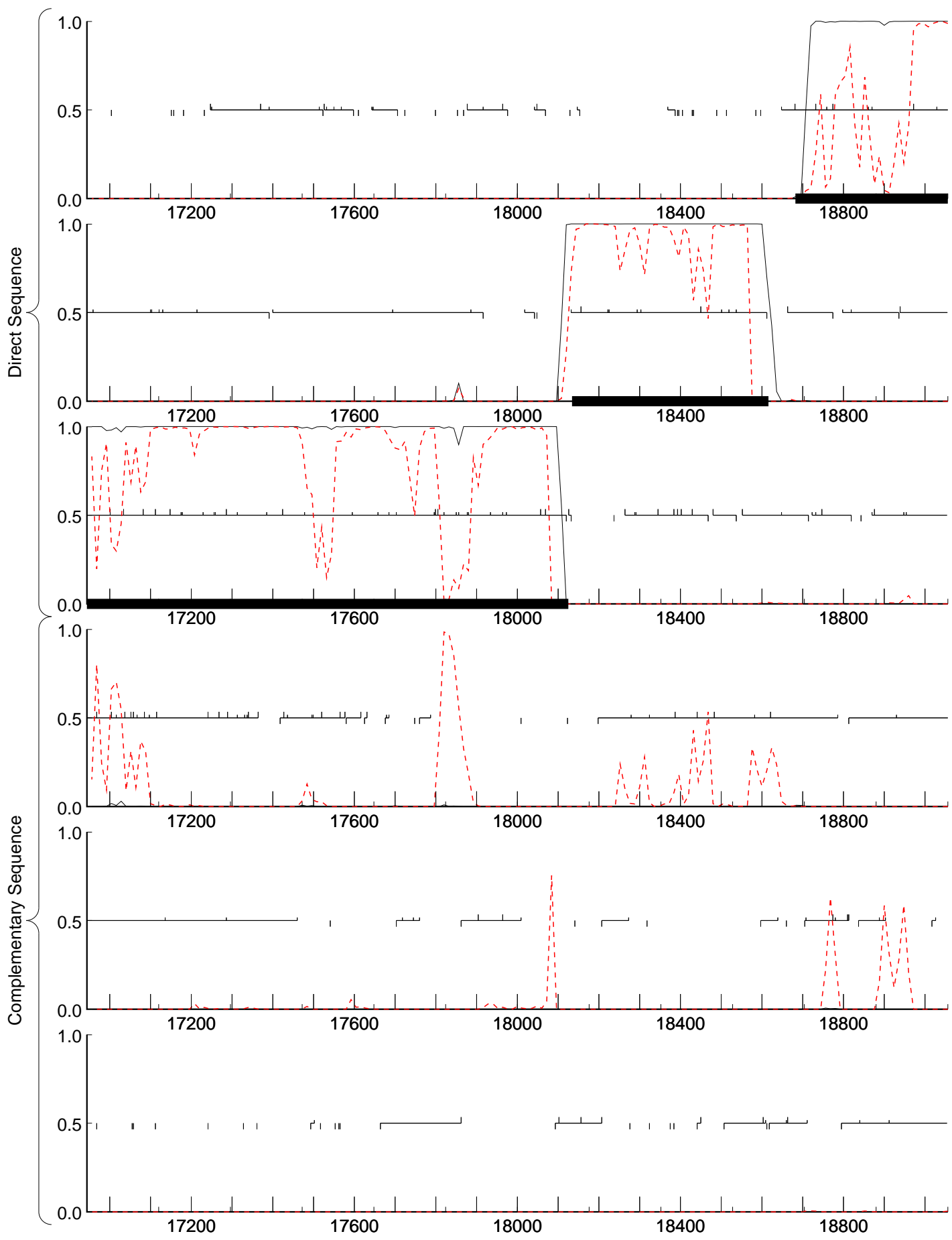
typical.ps

atypical.ps



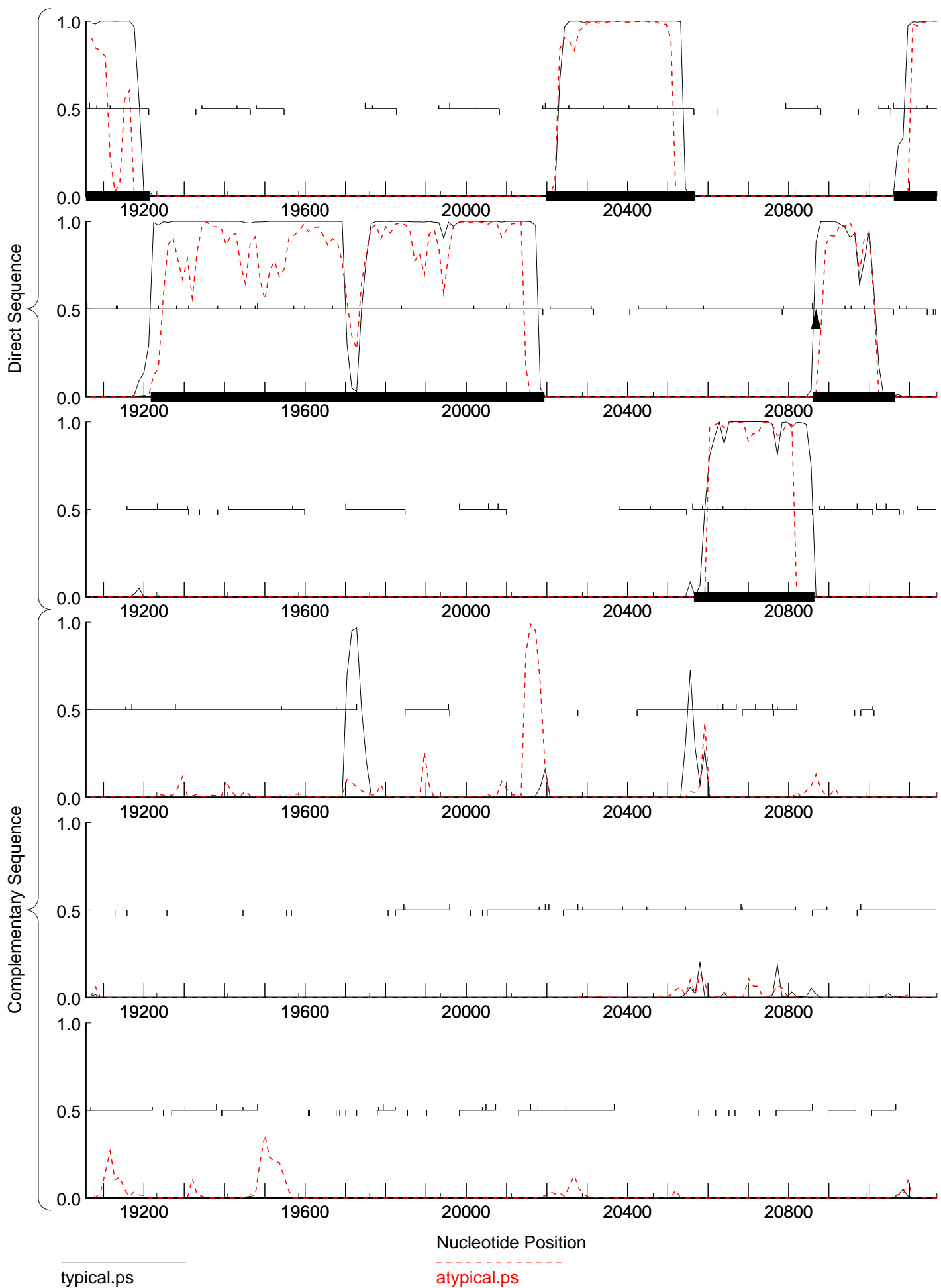






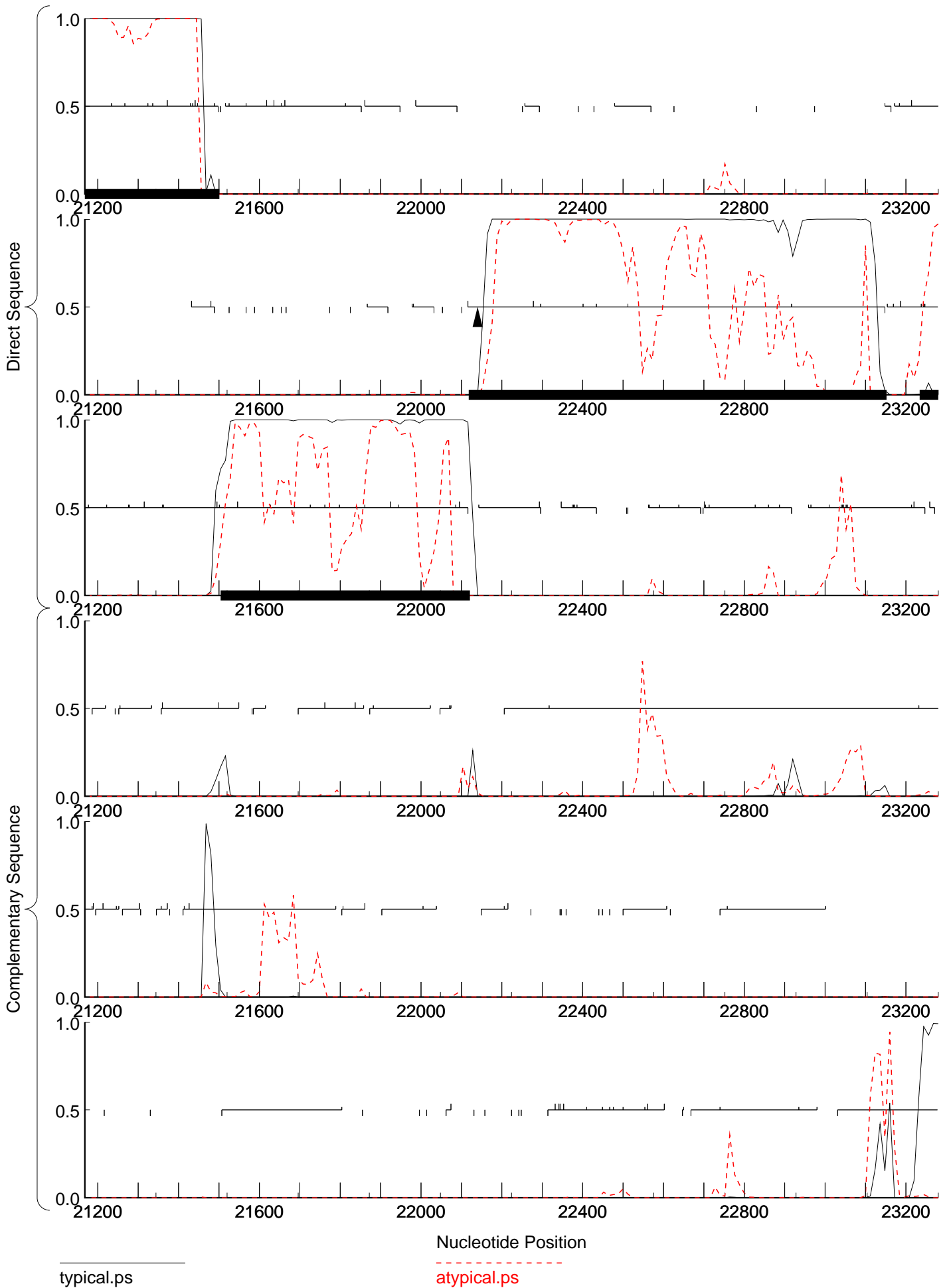
typical.ps

atypical.ps



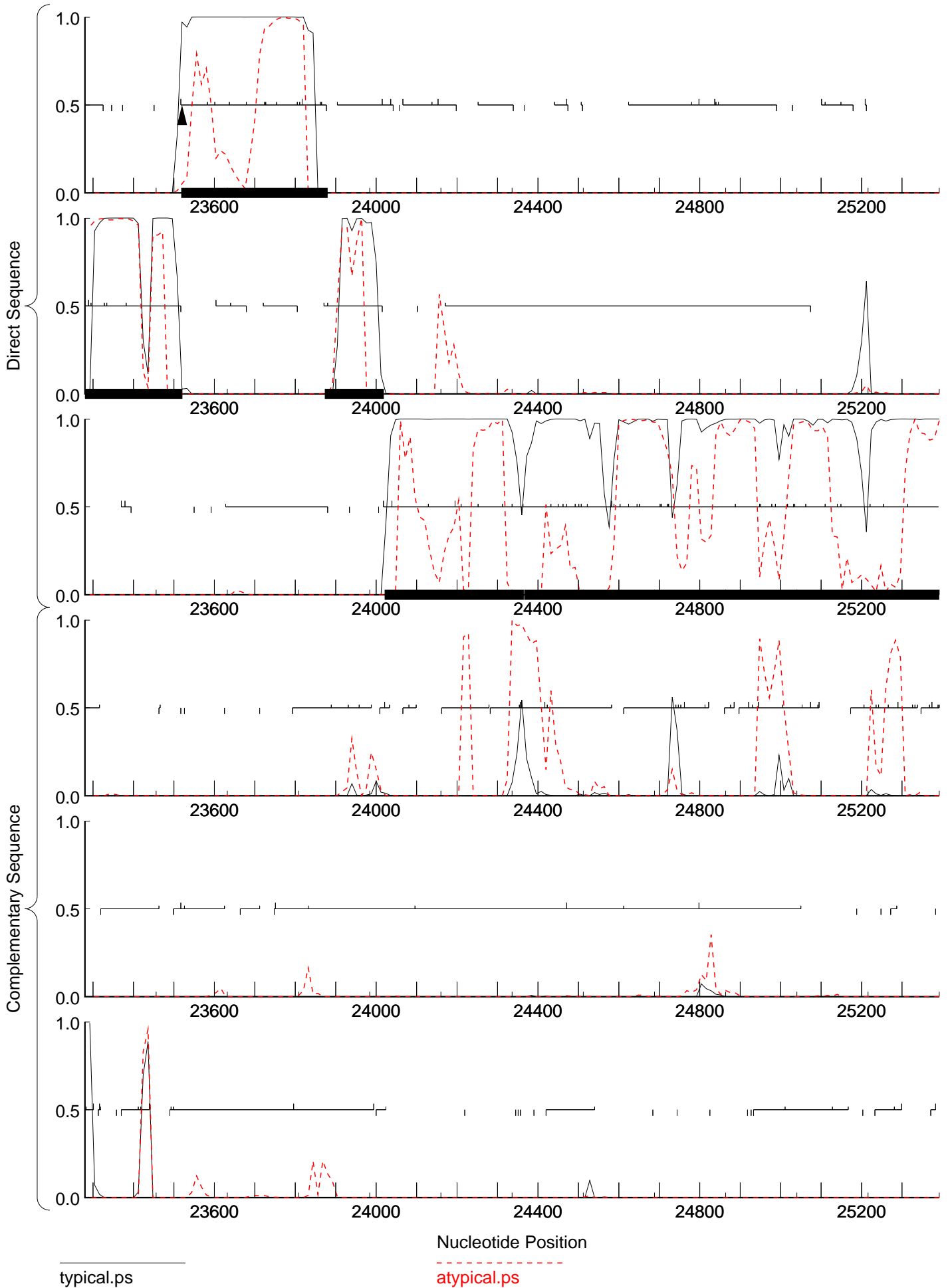
typical.ps

atypical.ps



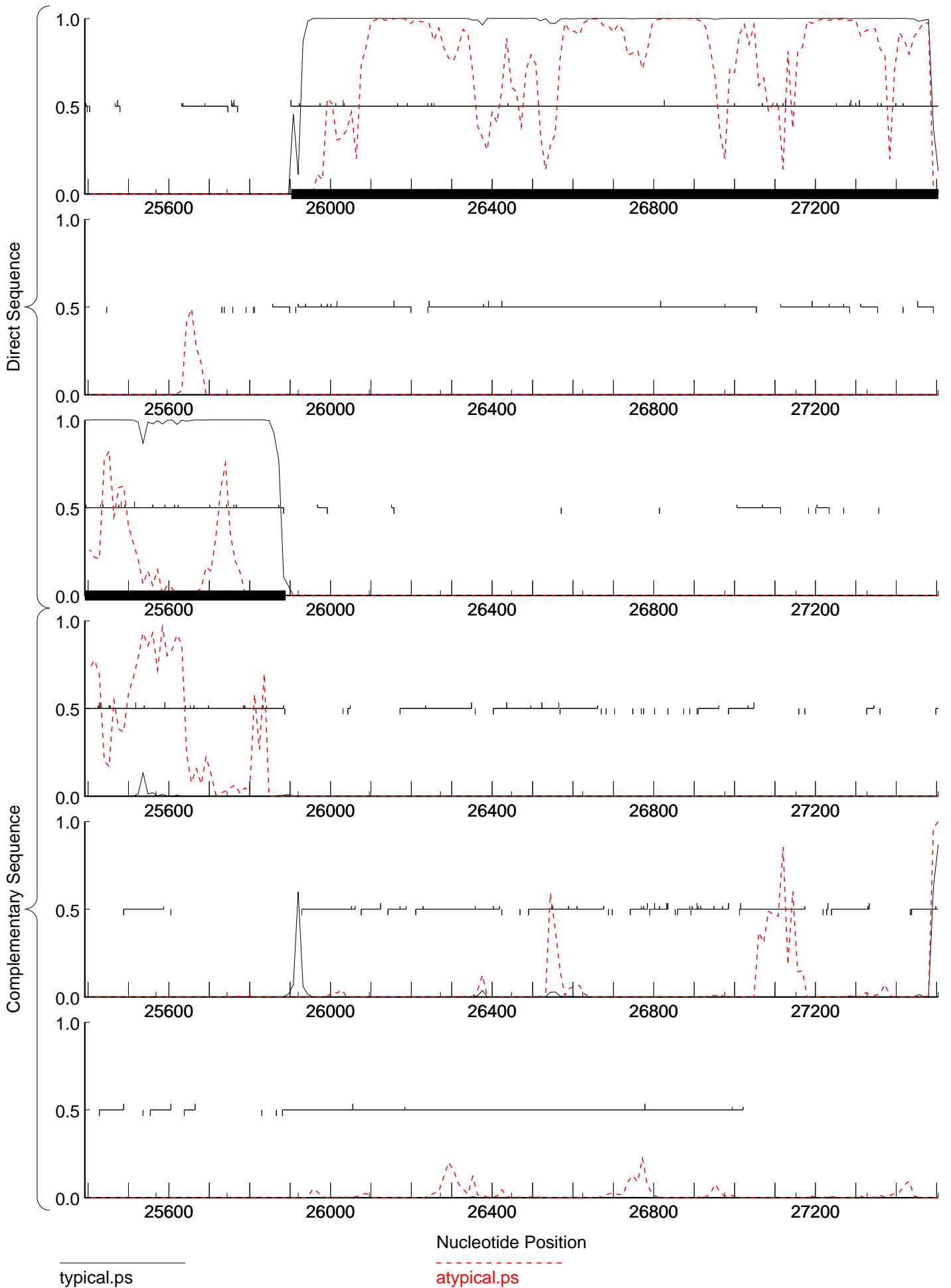
typical.ps

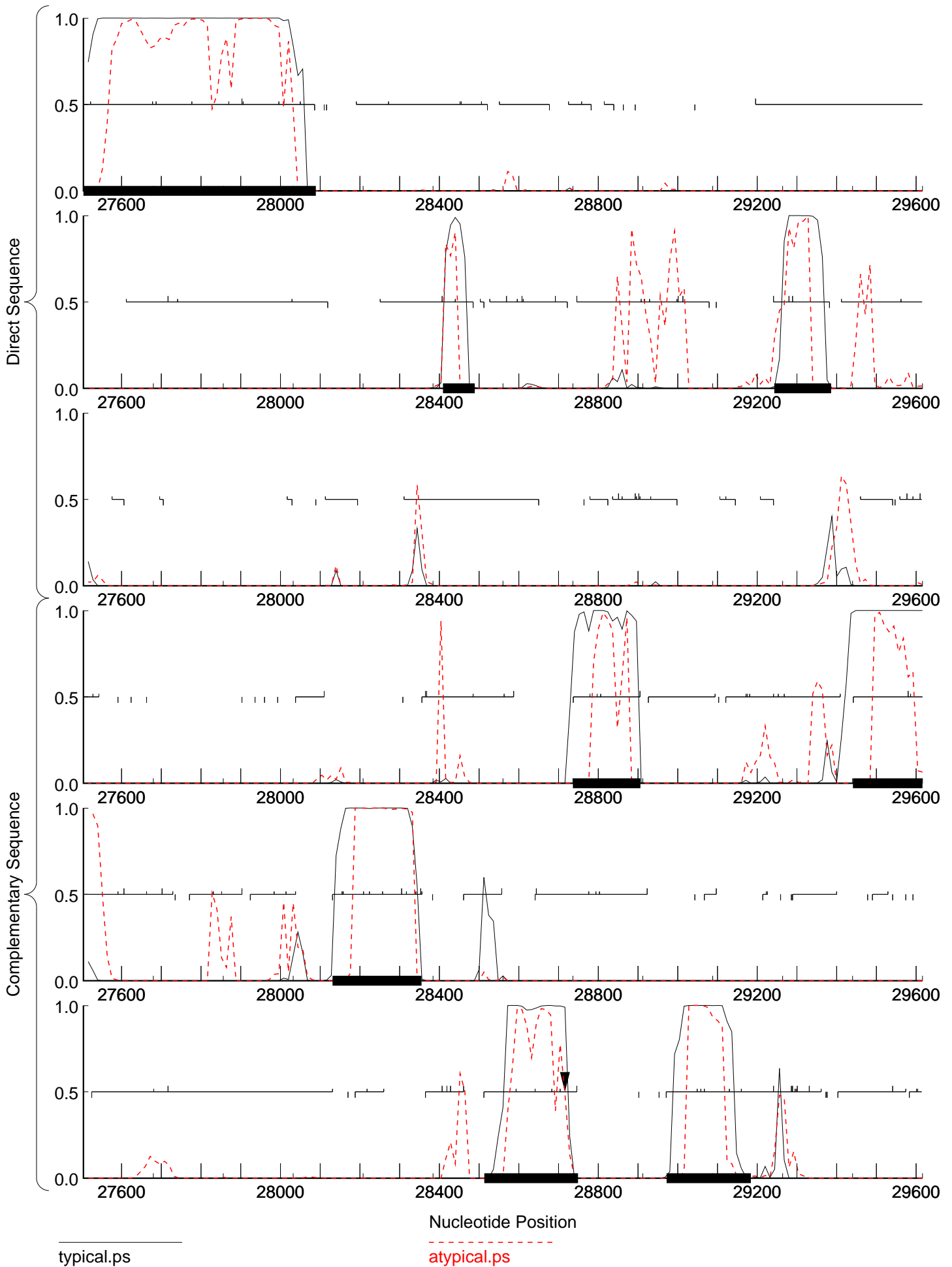
atypical.ps

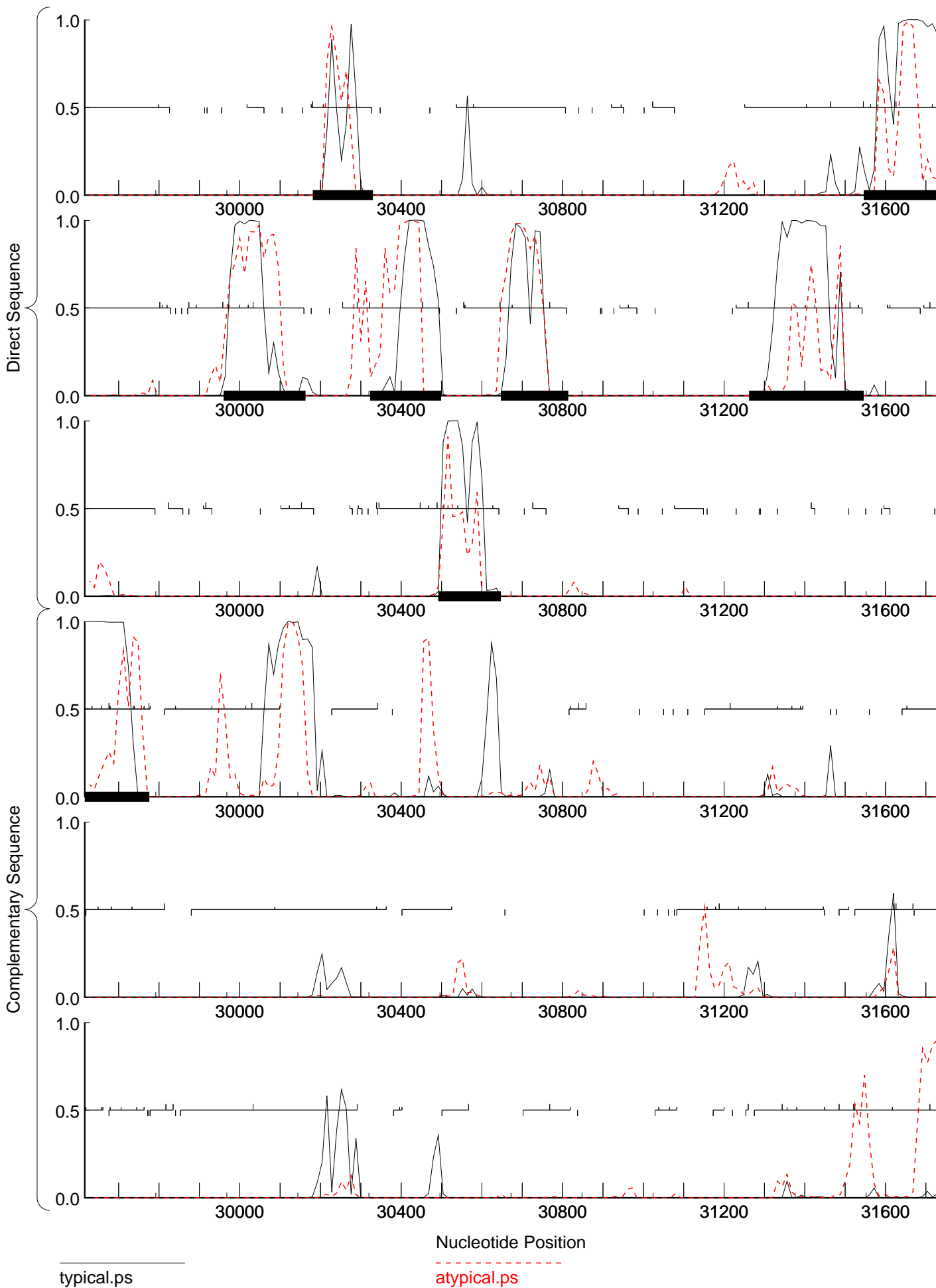


typical.ps

atypical.ps

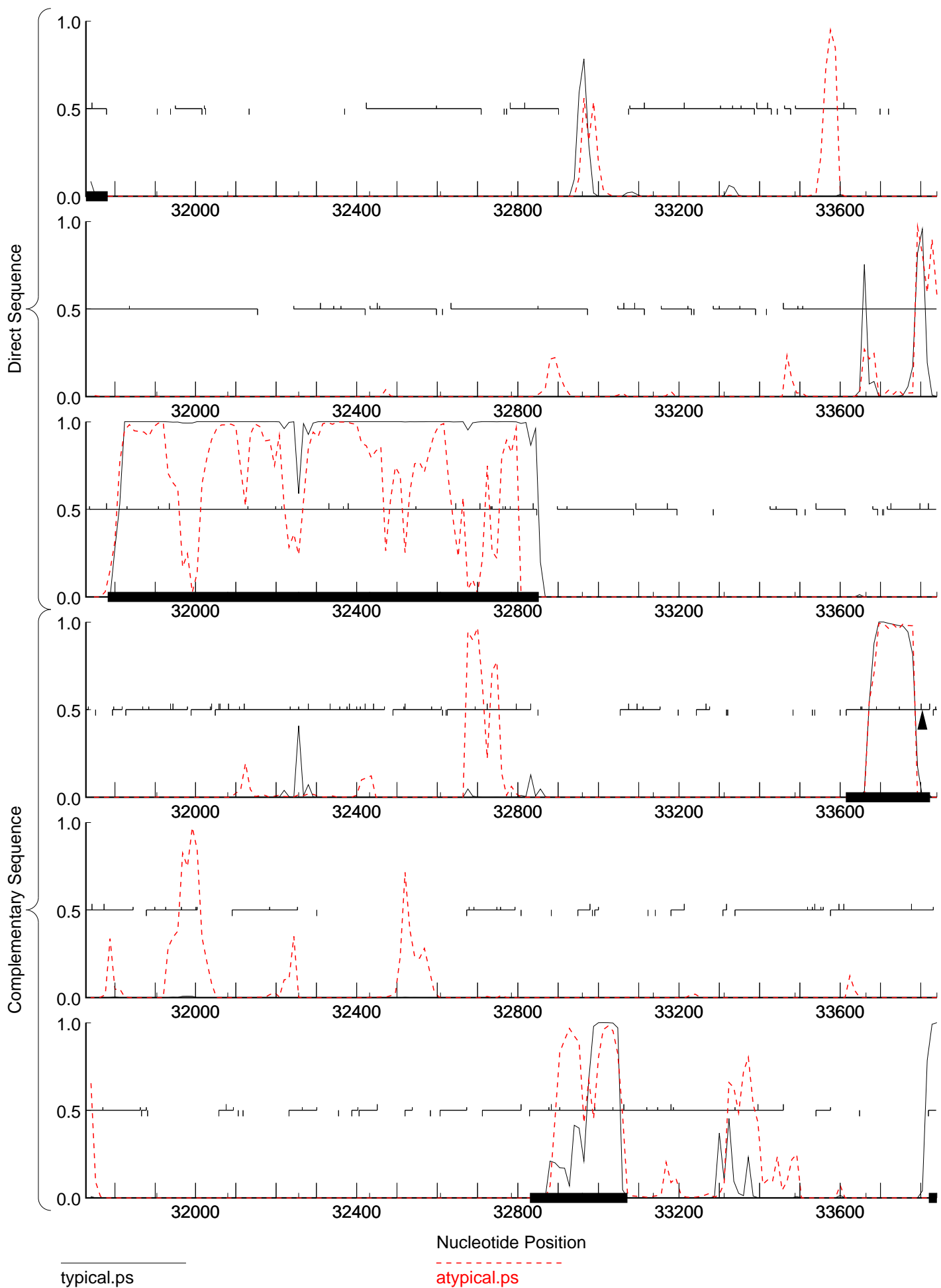






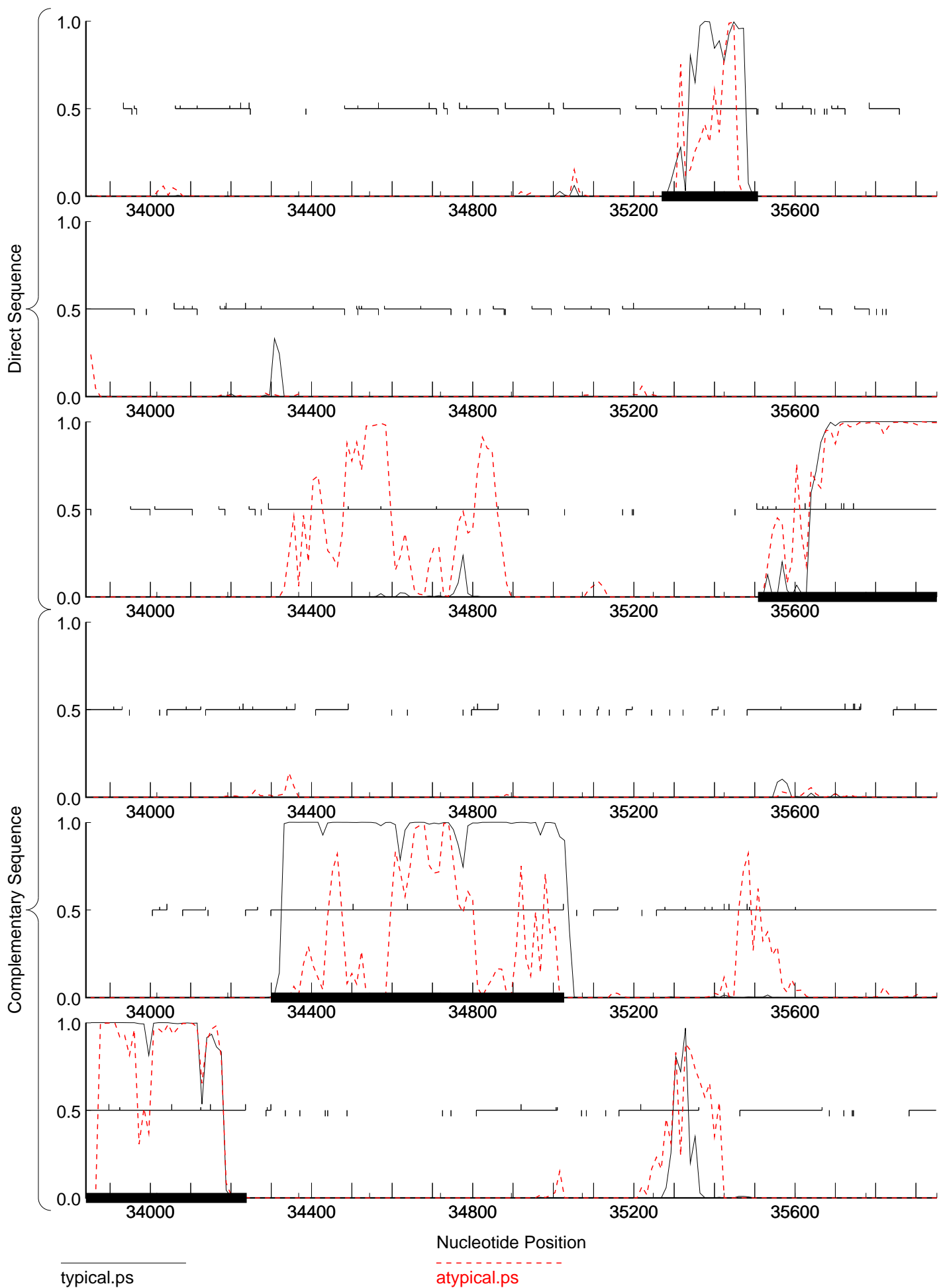
typical.ps

atypical.ps



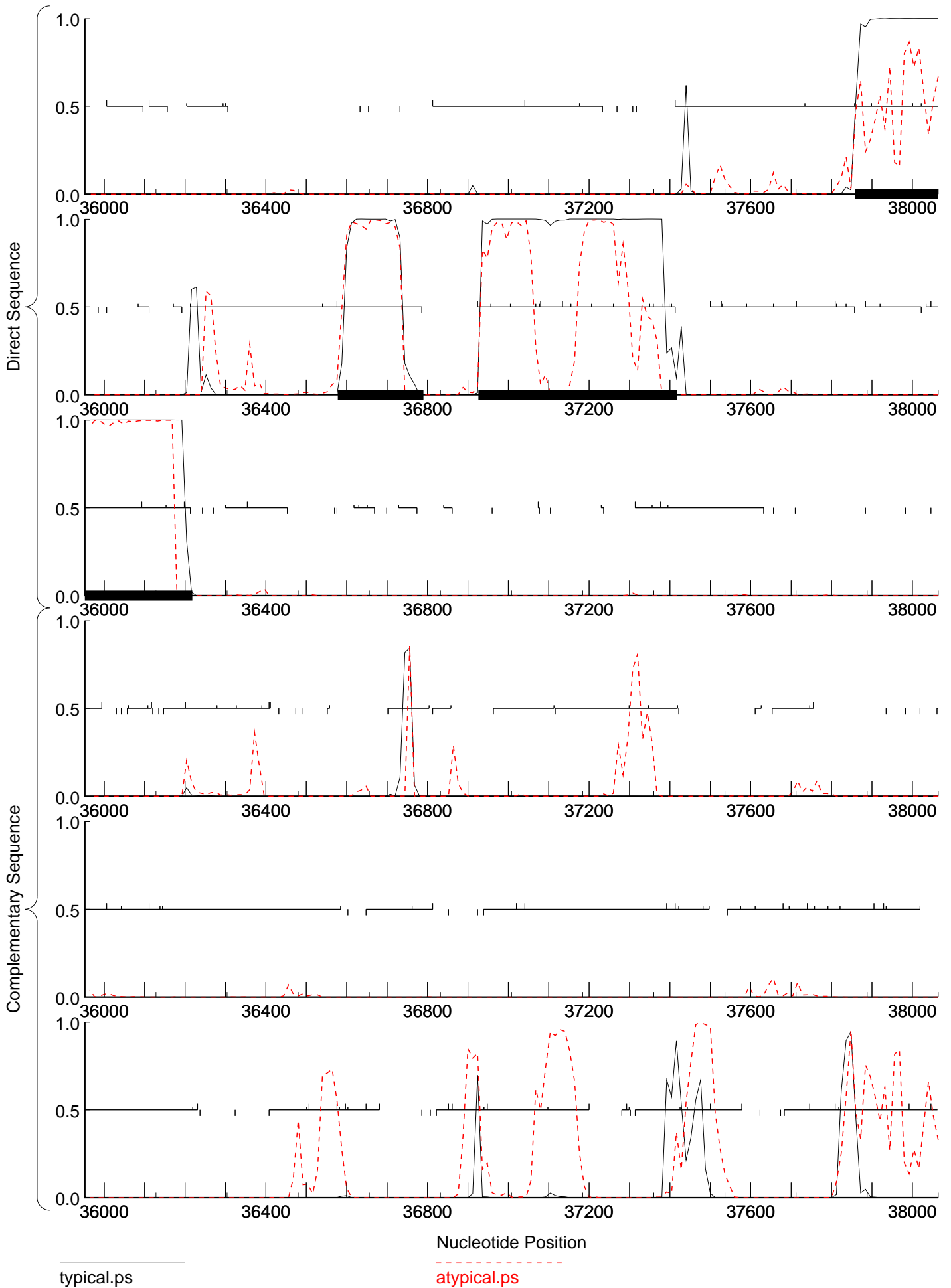
typical.ps

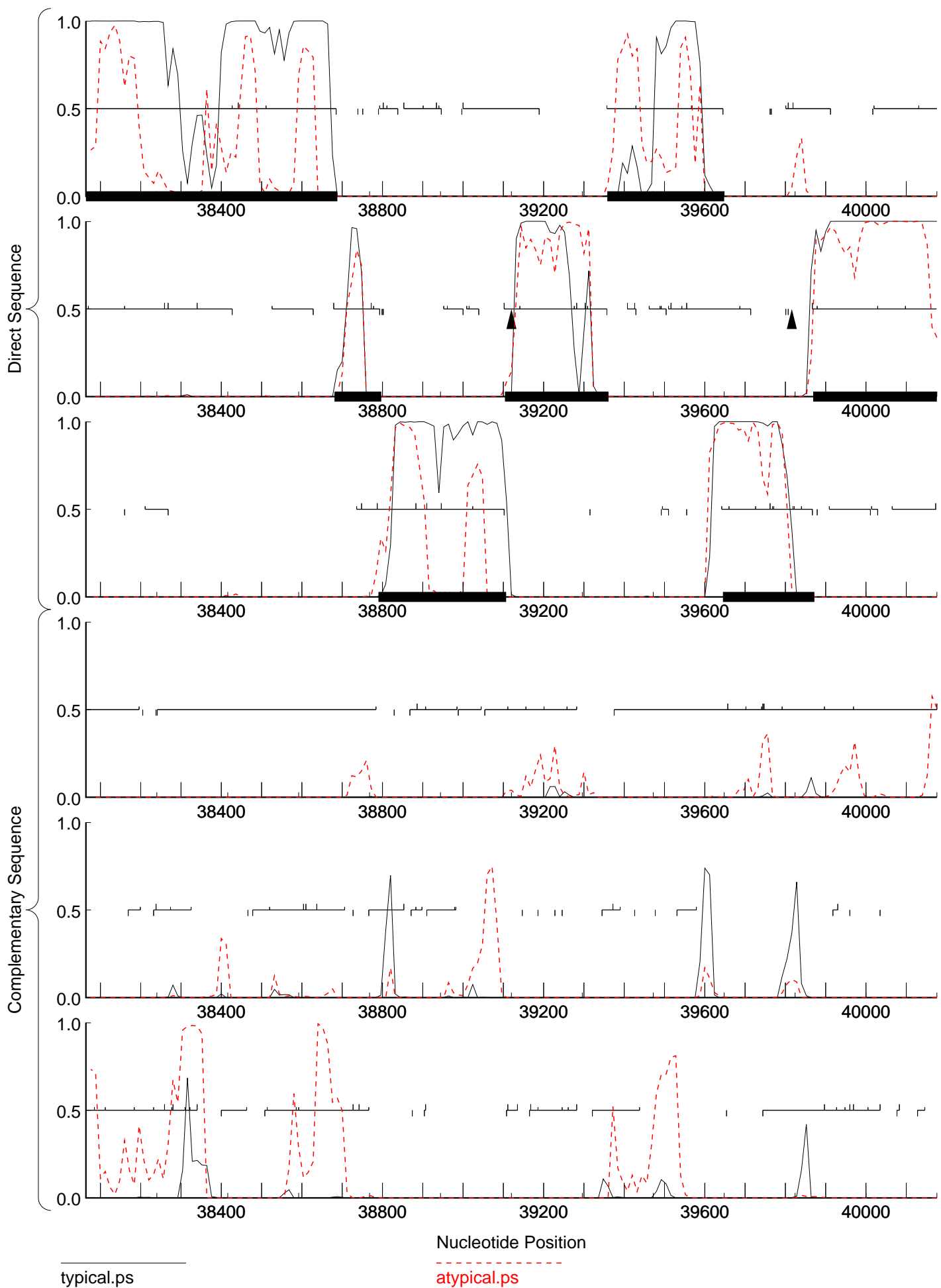
atypical.ps



typical.ps

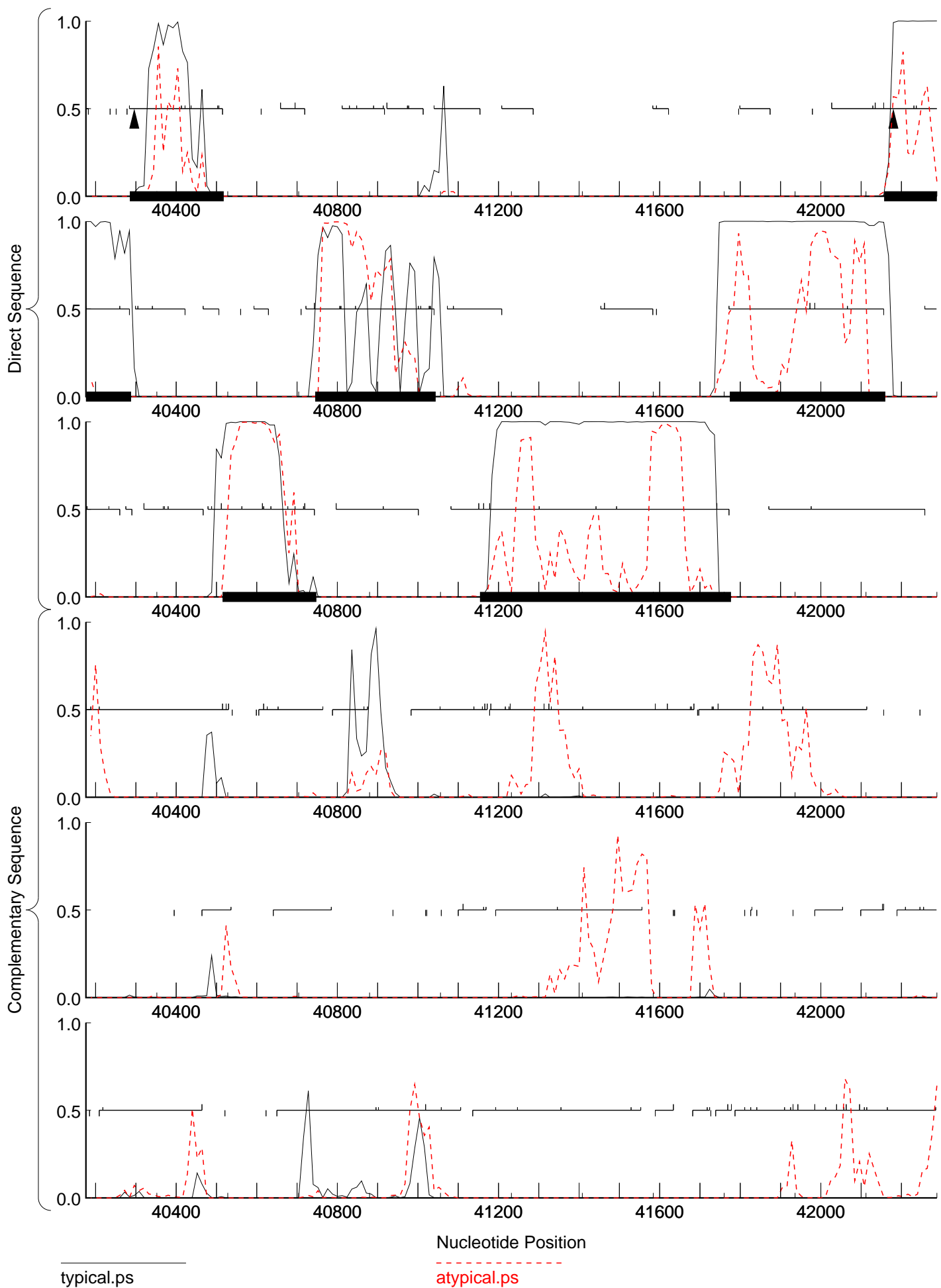
atypical.ps





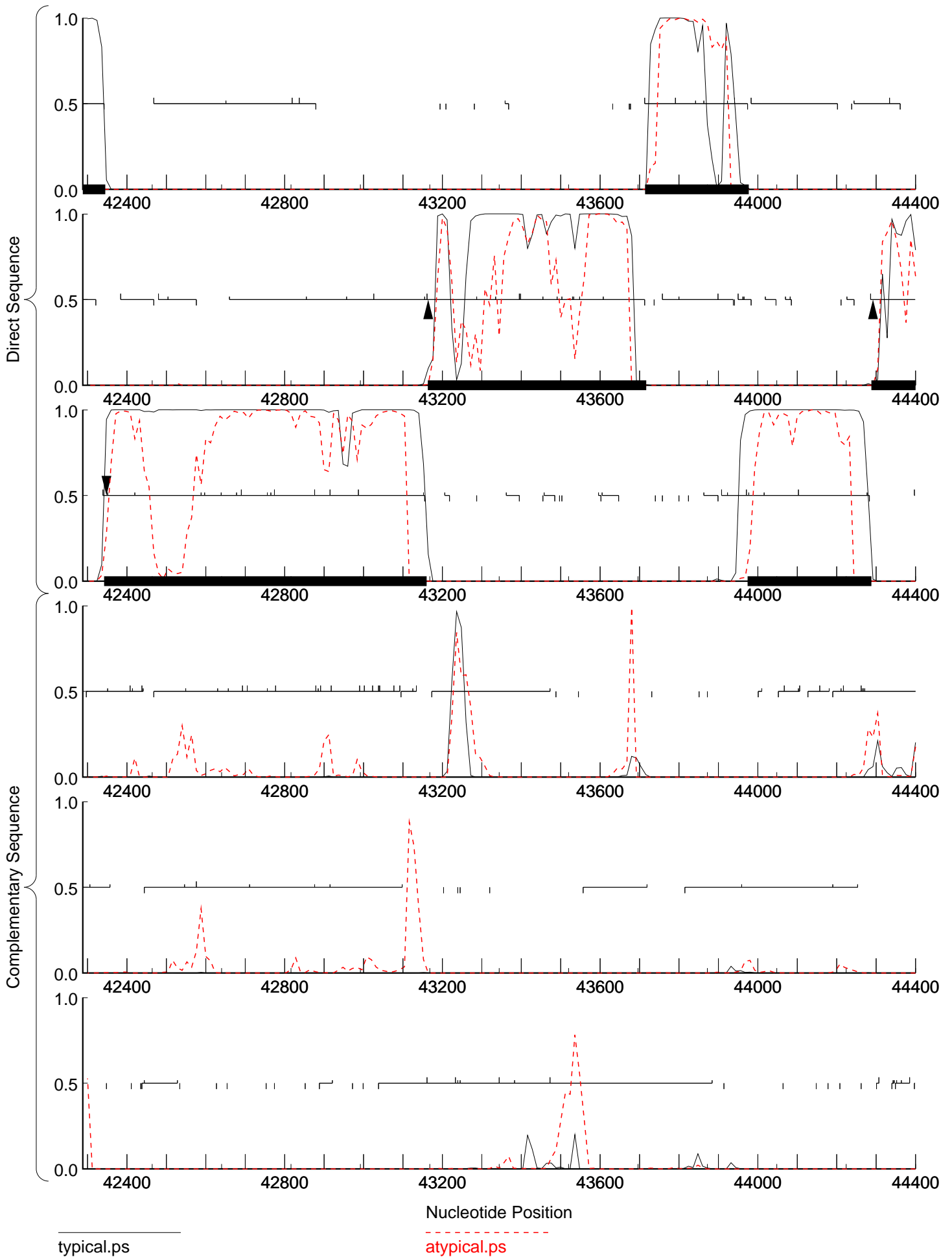
typical.ps

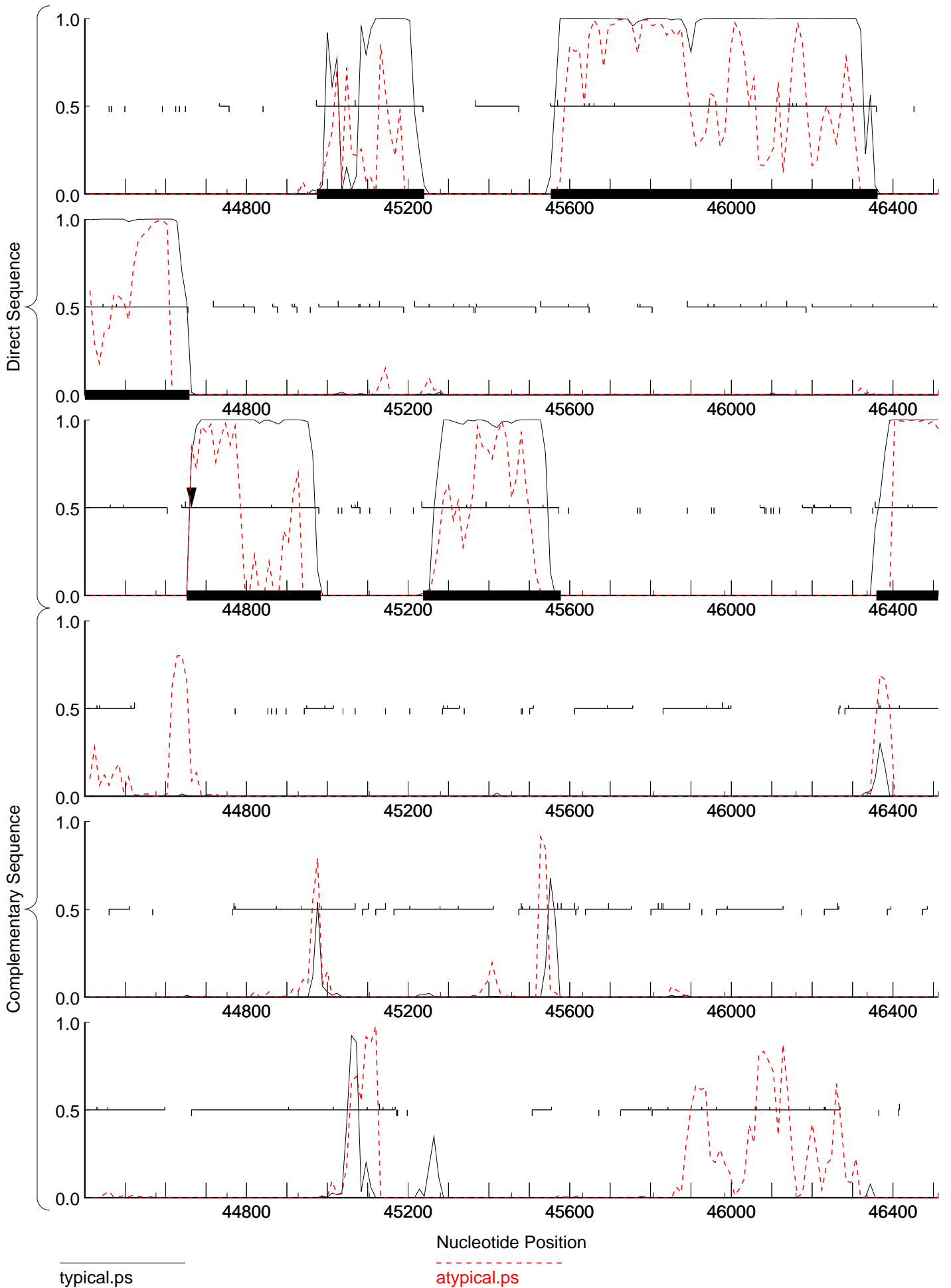
atypical.ps

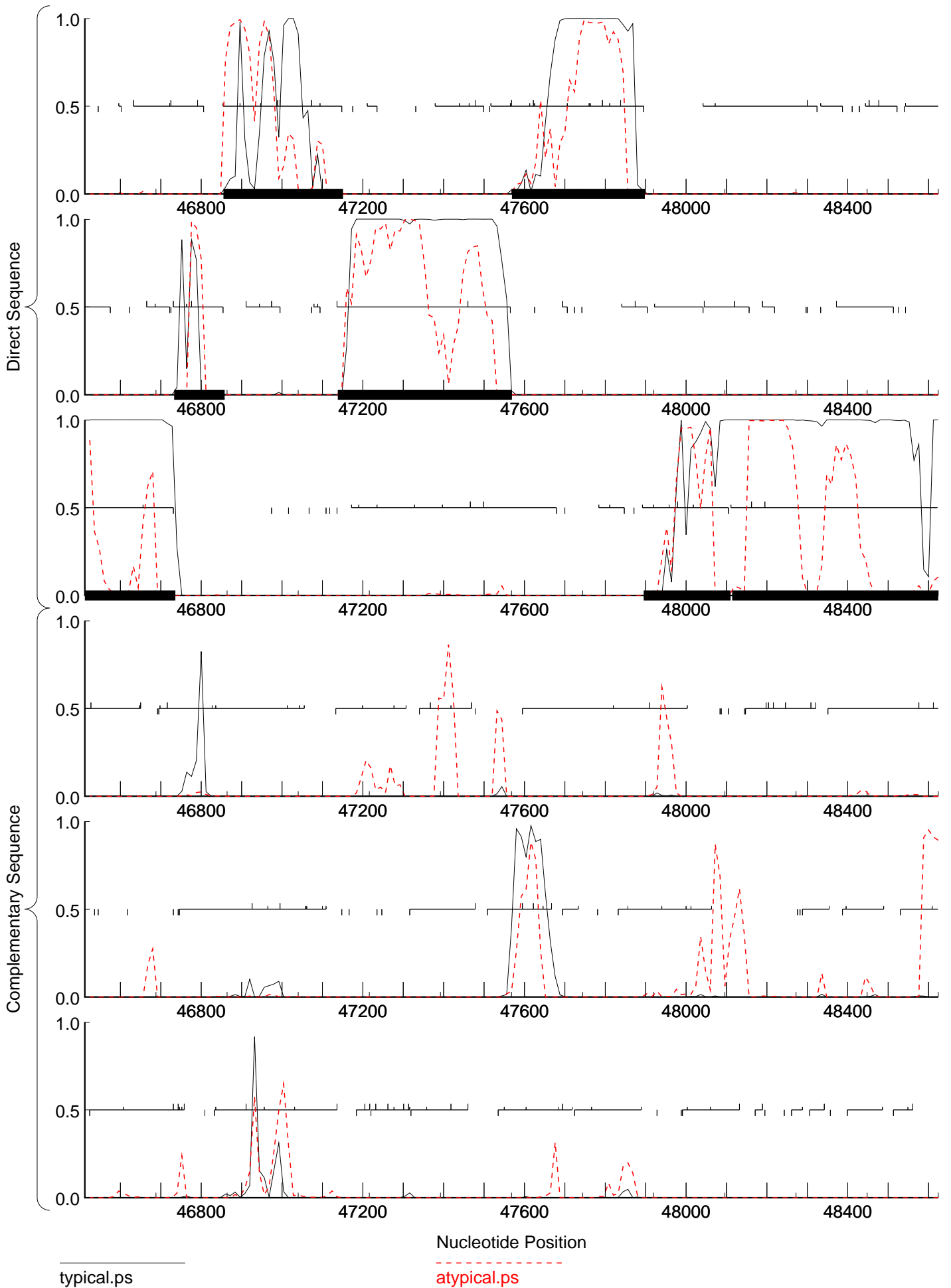


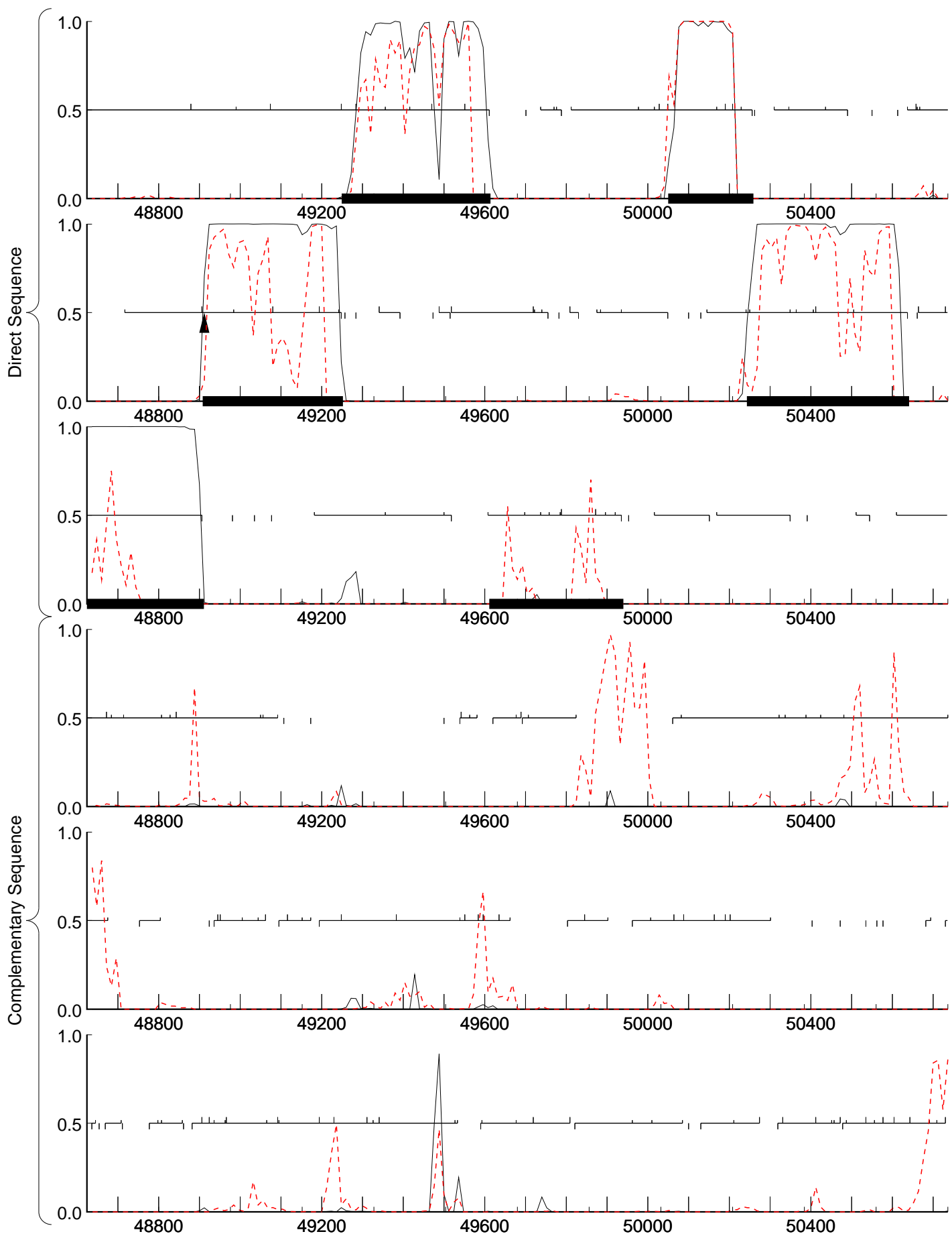
typical.ps

atypical.ps



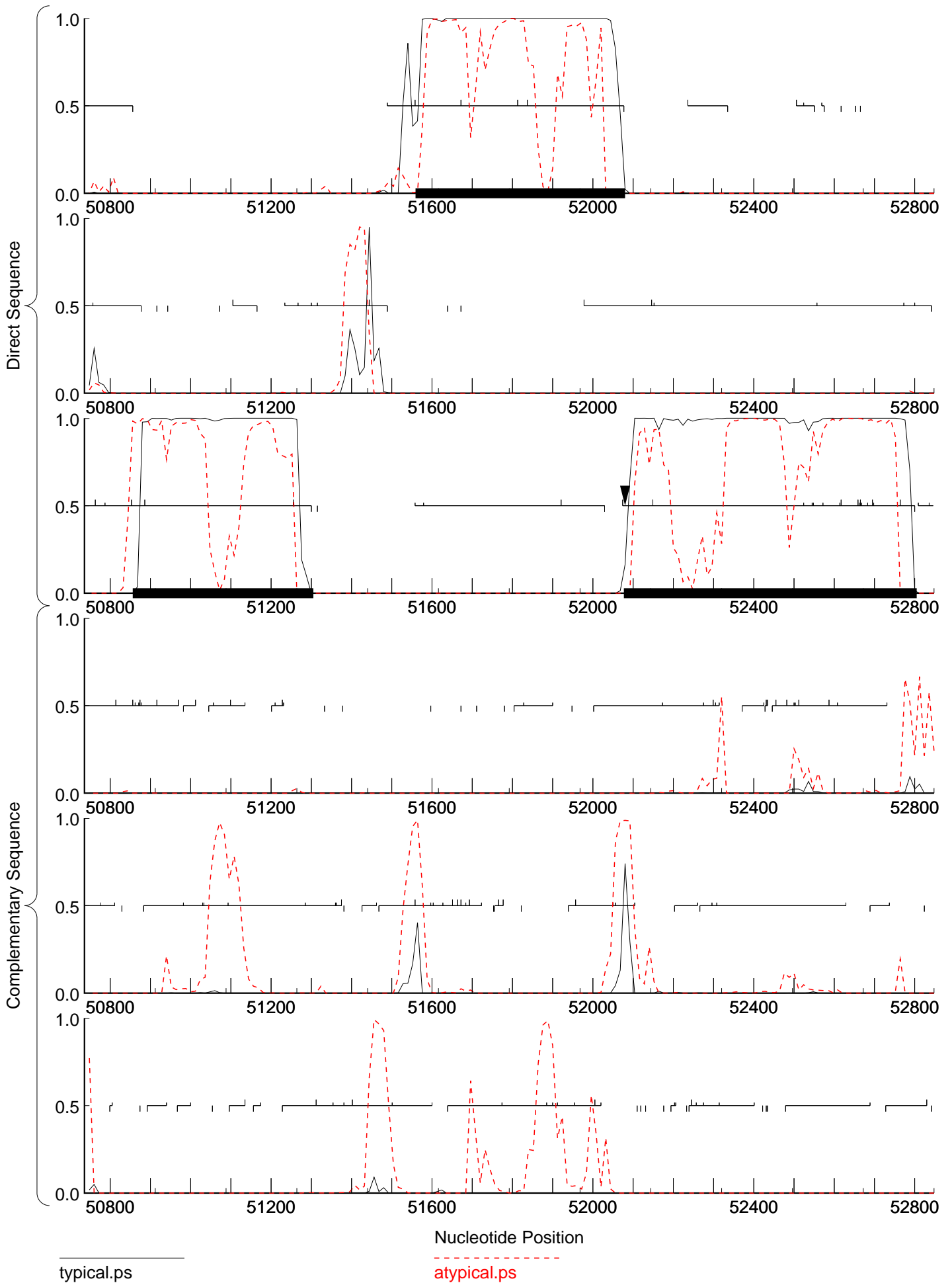






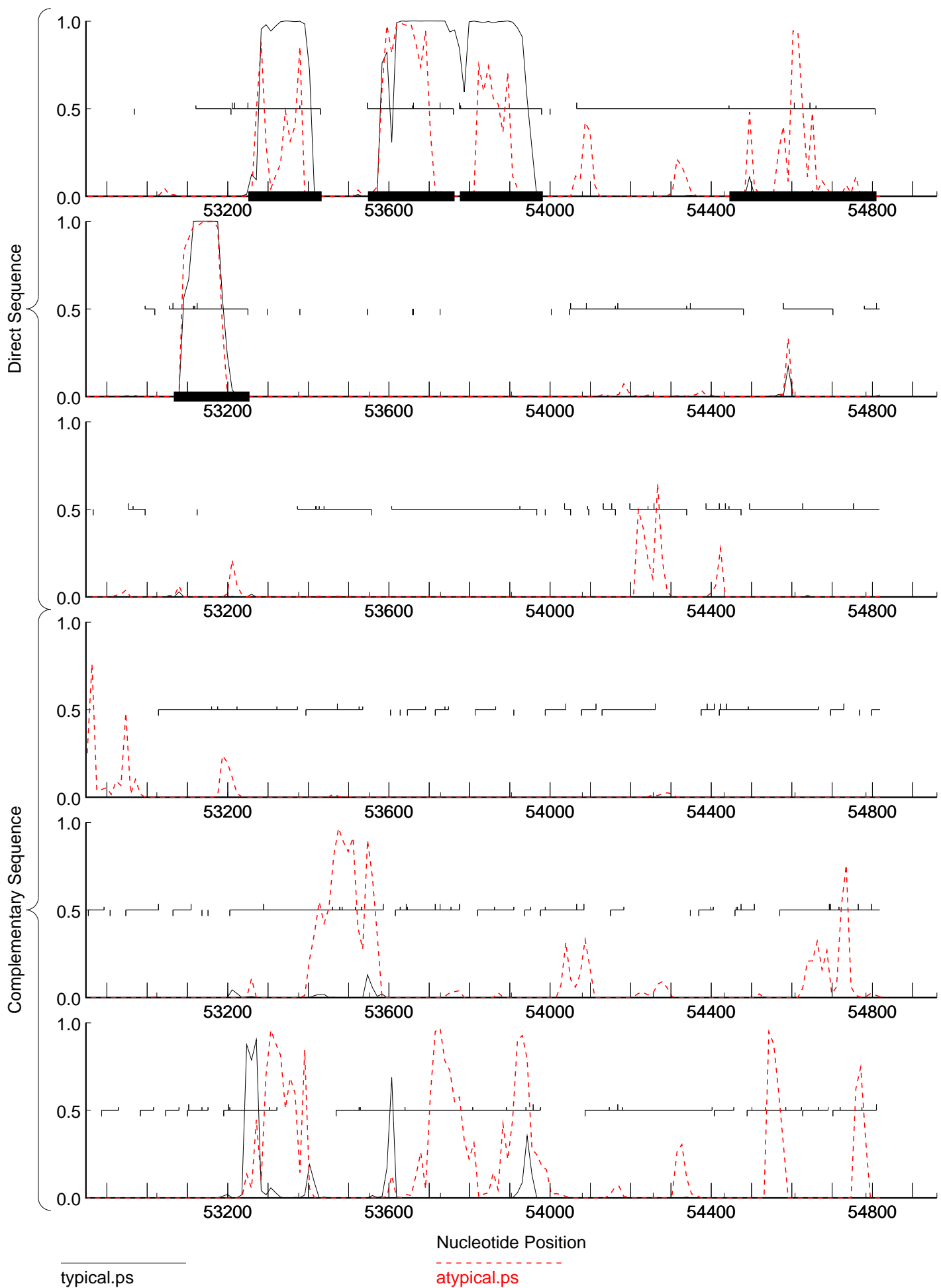
typical.ps

atypical.ps



typical.ps

atypical.ps



typical.ps

atypical.ps