

GeneMark

Version 2.5p (09.08.06)

Copyright 1993 - M. Borodovsky, J. McIninch

PROGRAM INFORMATION

Sequence : Microbacterium phage Camille complete sequence, 53097 bp including 9-base 3' overhang (CGCG)
Analysis Date : 1/20/18 at 2:21:05
Pages : 27
Sequence Length : 53097 bp
GC Content : 56.31%

Window Length : 96 bp
Window Step : 12 bp
Threshold Value : 0.500

PS-Version : 1.2

GeneMark Options : PostScript graph,
Mark ORFs / splice sites,
List ORFs,
List regions and/or splice sites,

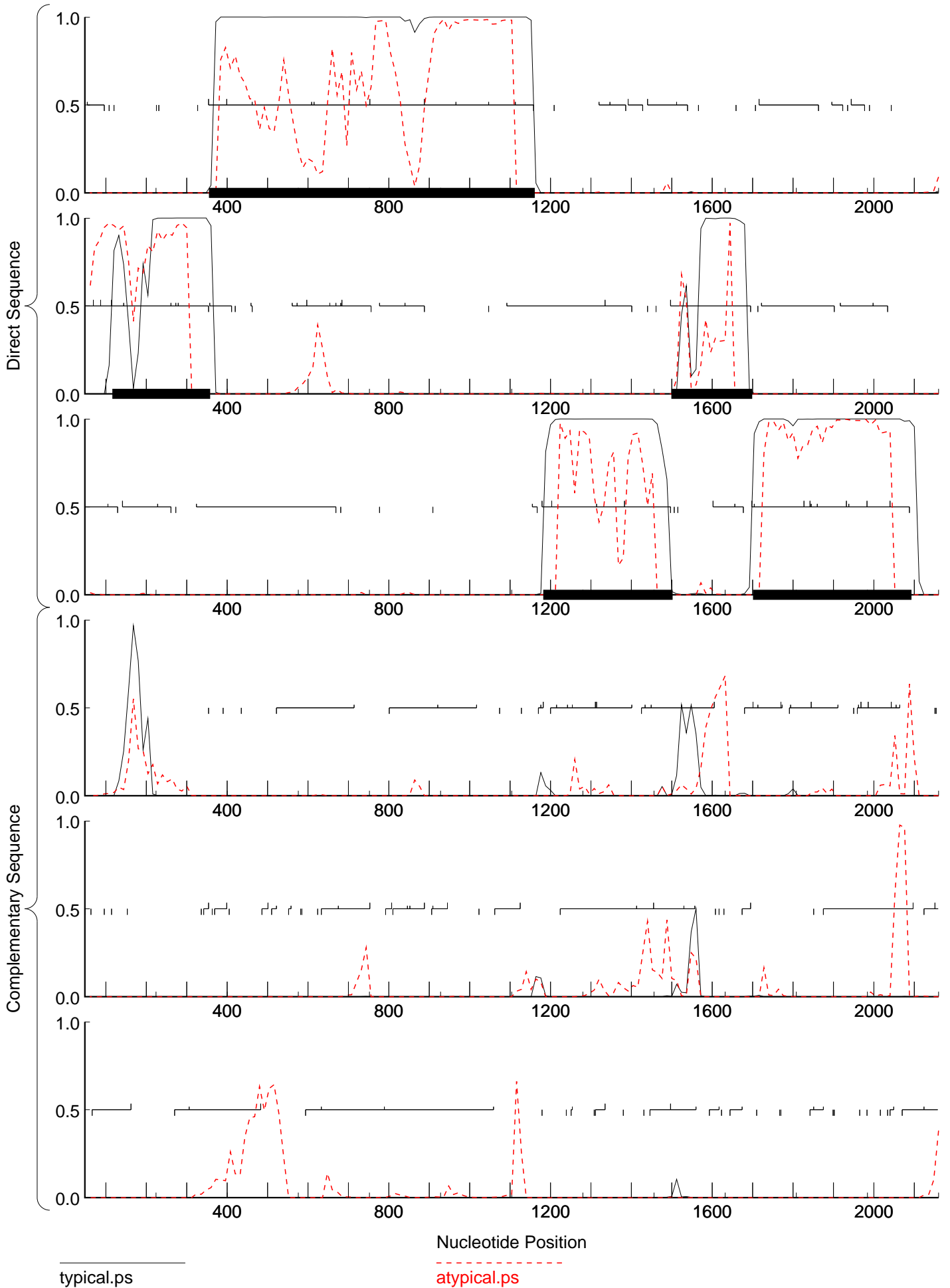
MATRIX INFORMATION

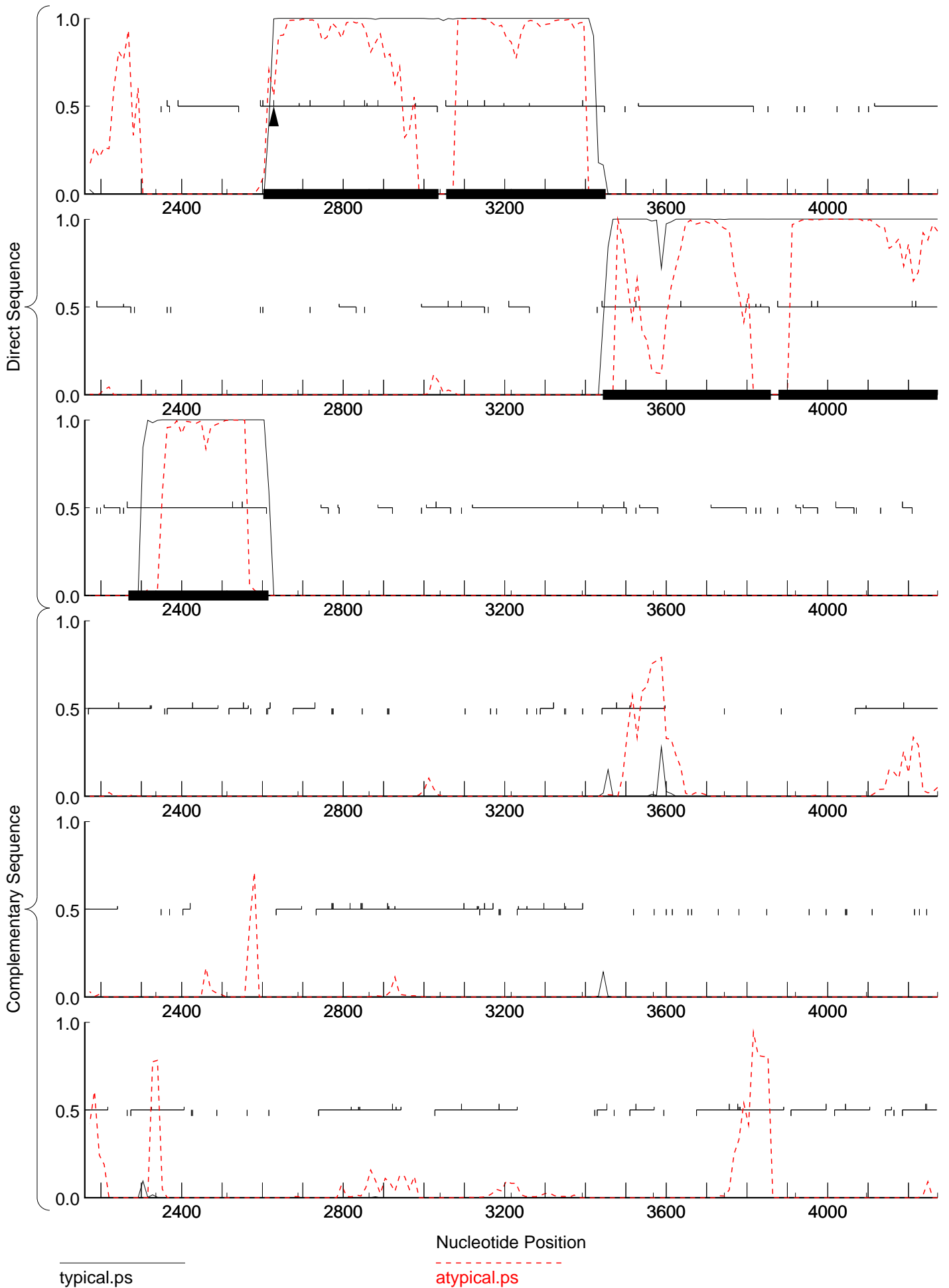
Matrix : -
Author : -
Order : 4

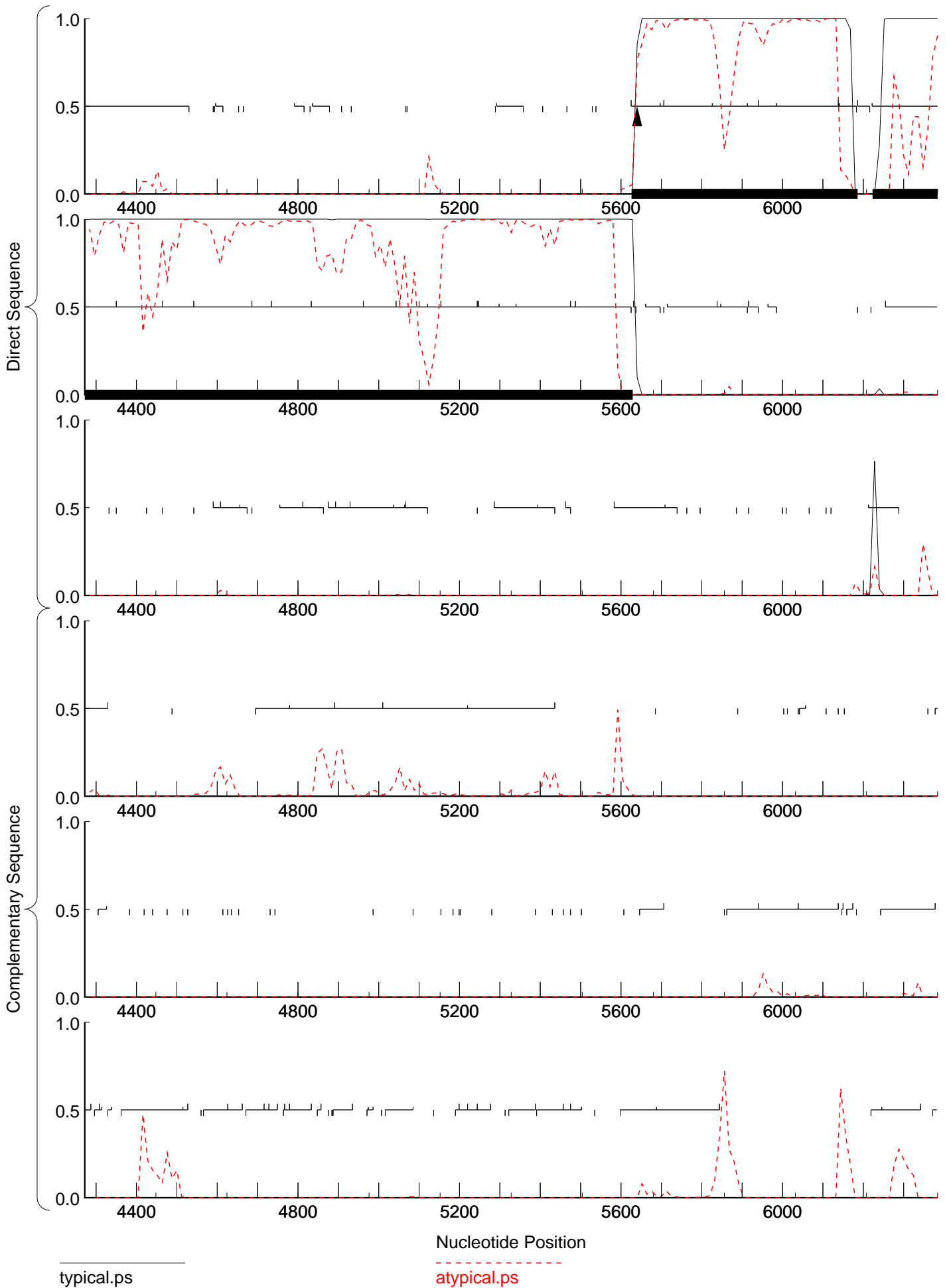
Send questions / comments to:
Dr. M. Borodovsky
Georgia Institute of Technology
School of Biology
Atlanta, GA 30332-0230

Matrix notes & comments

Training set derived by GeneMarkS, 4.30 October 2014
Sat Jan 20 02:21:05 2018

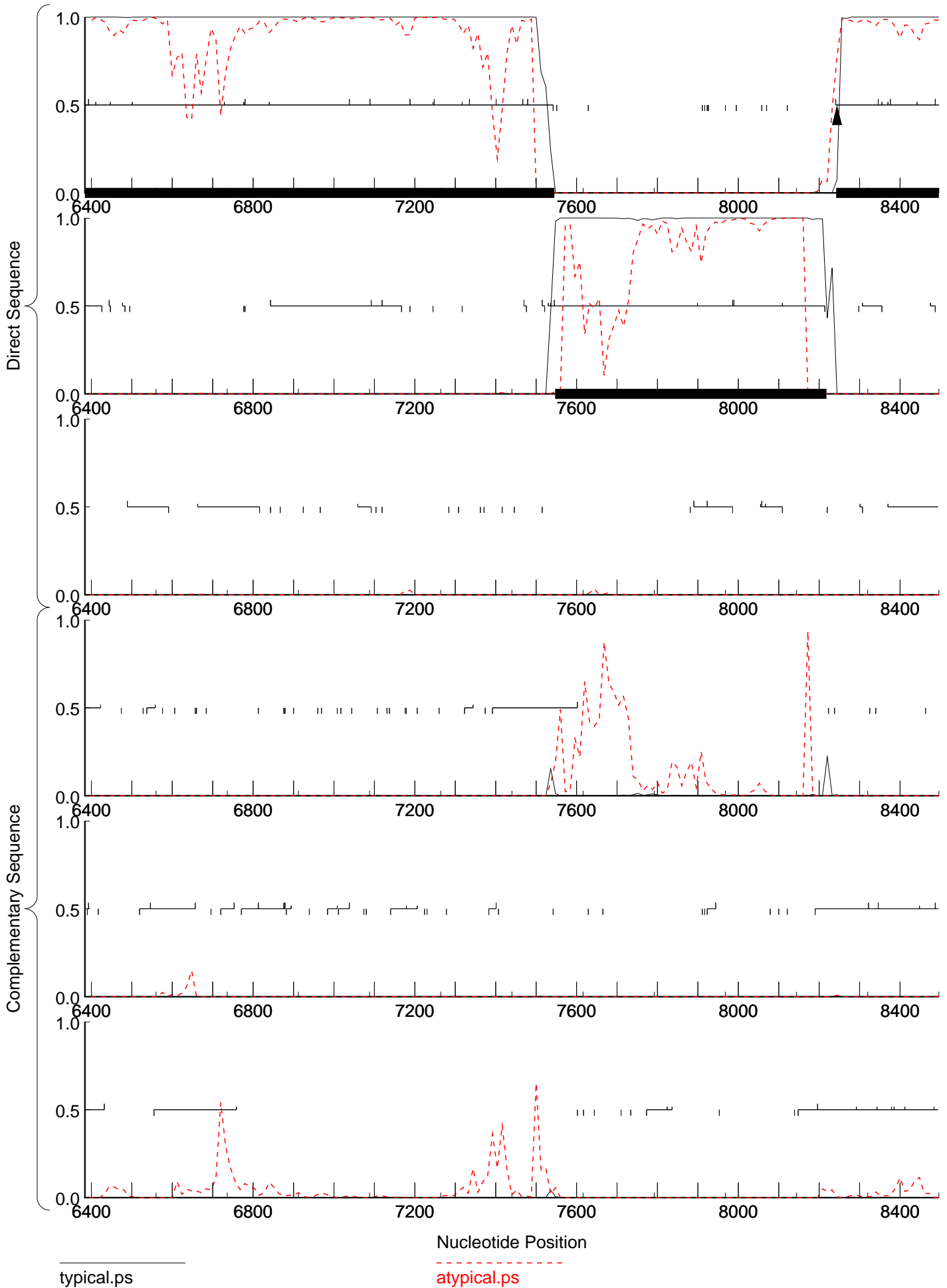


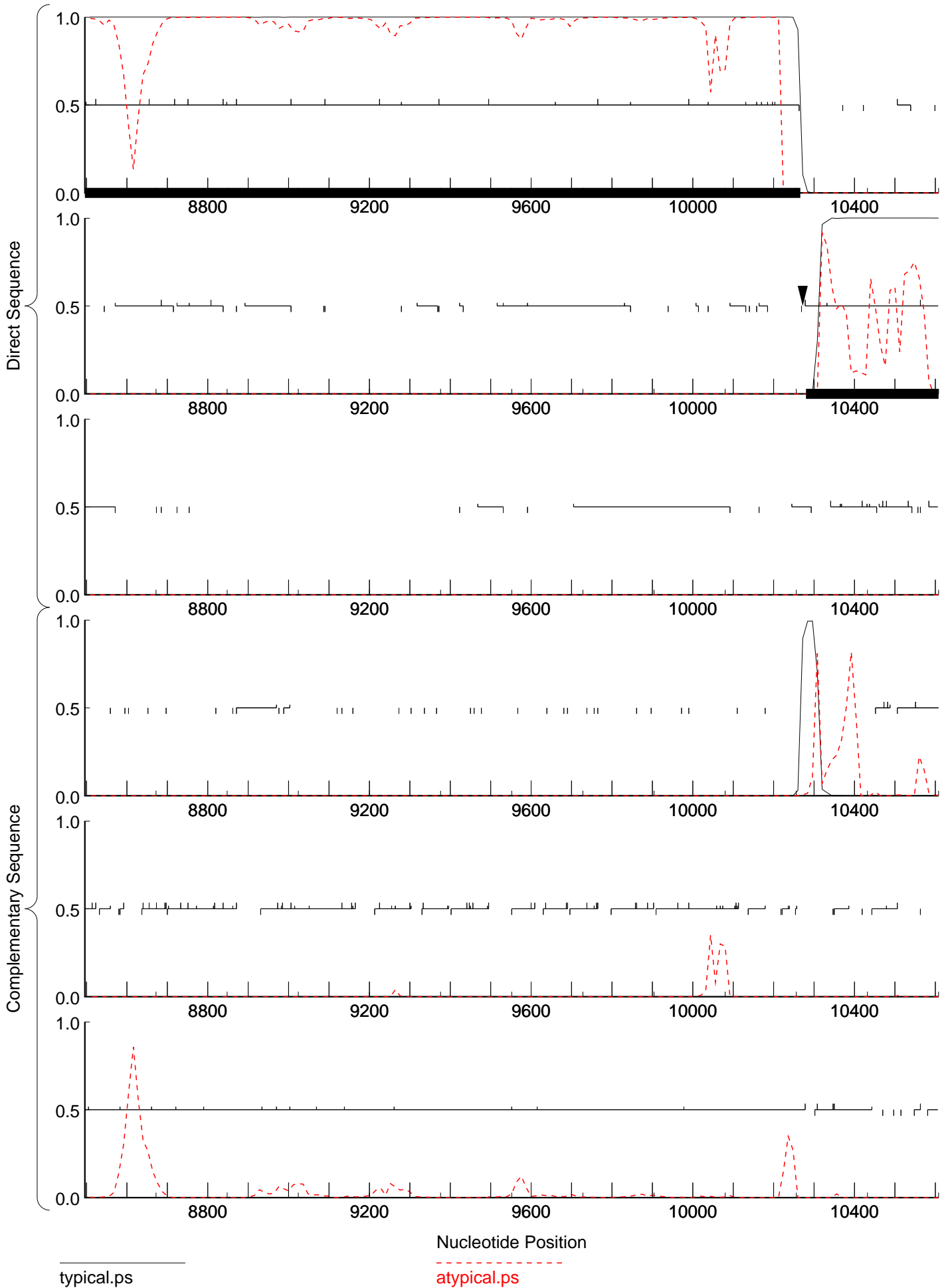


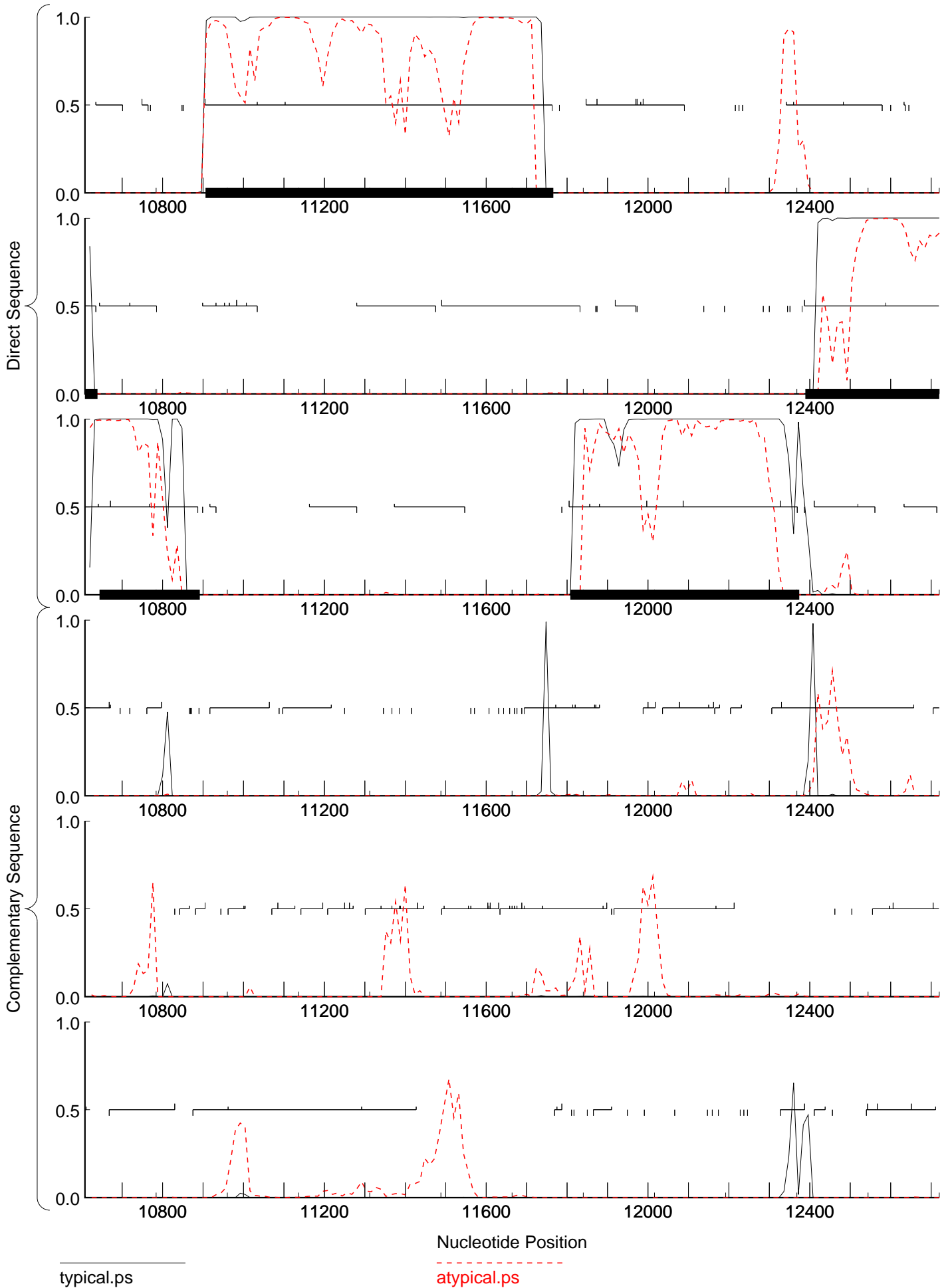


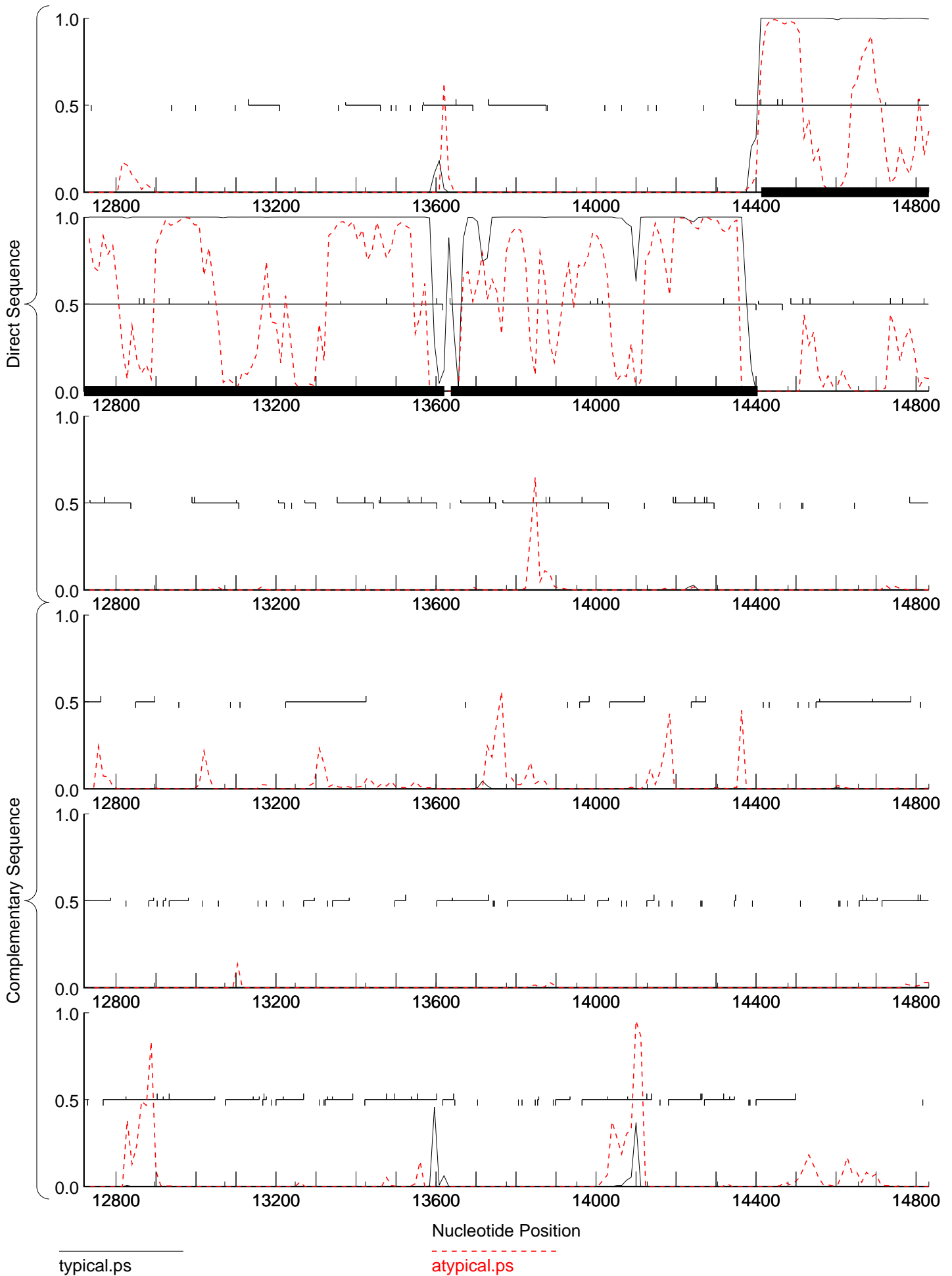
typical.ps

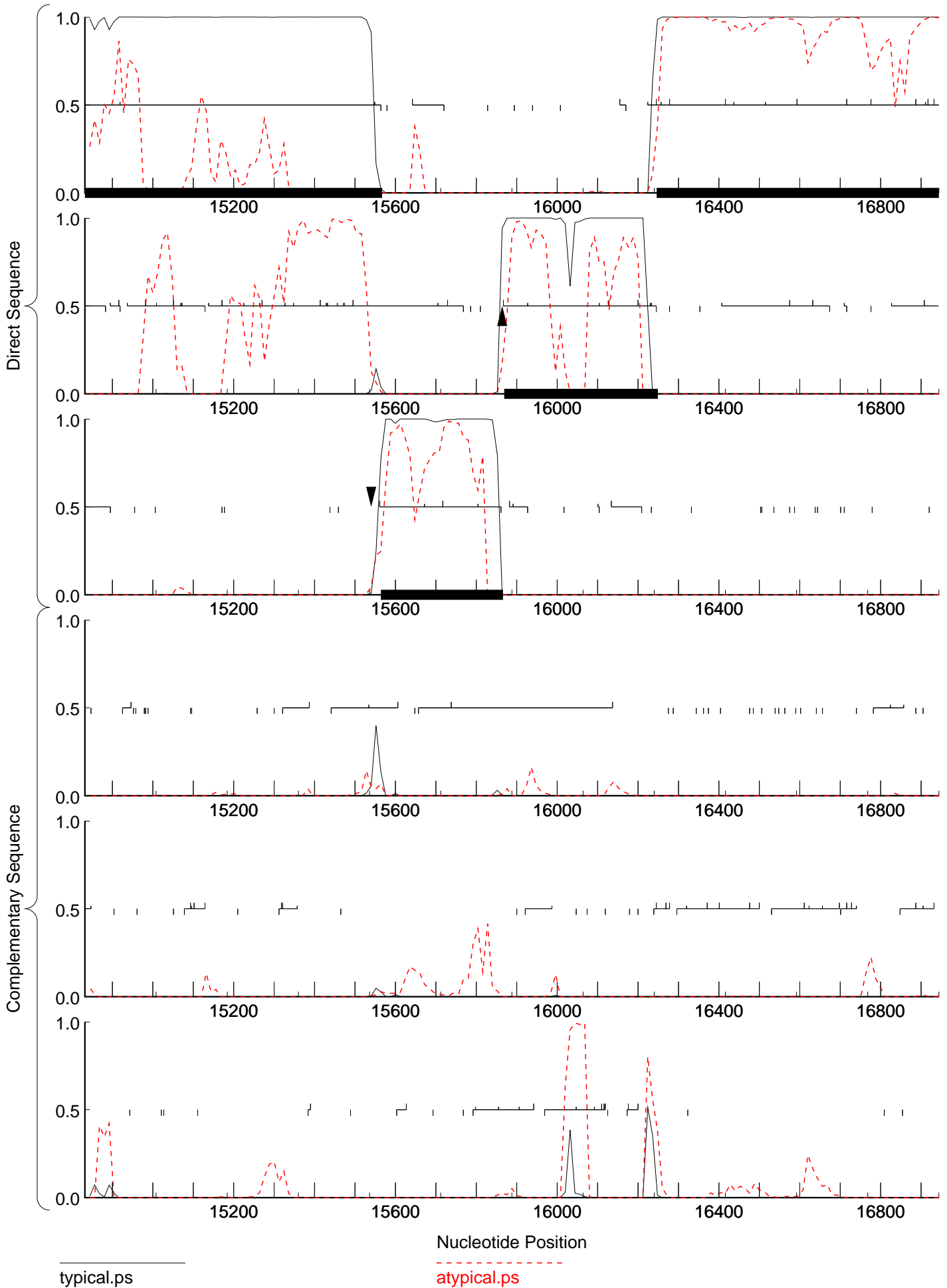
atypical.ps





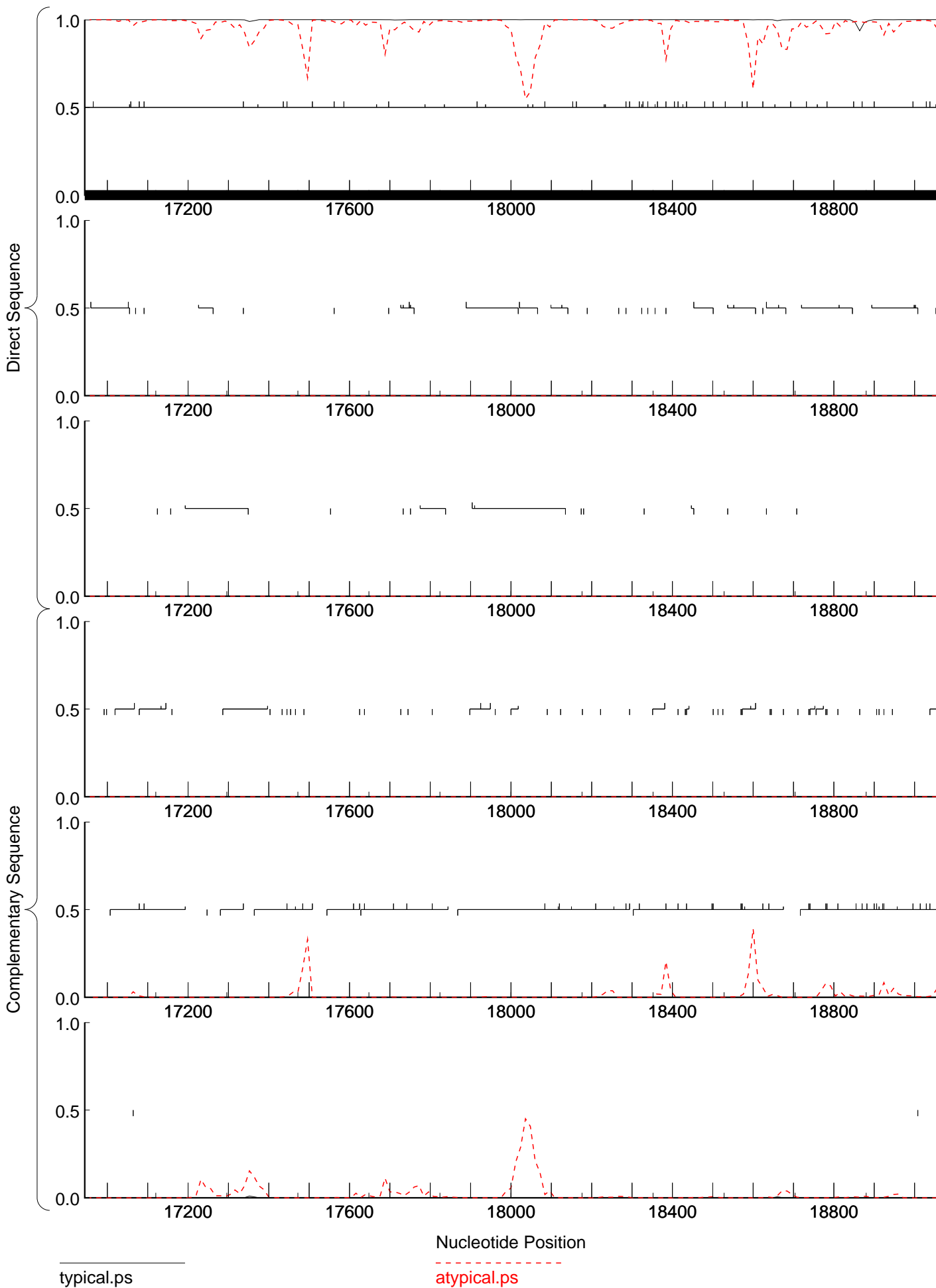


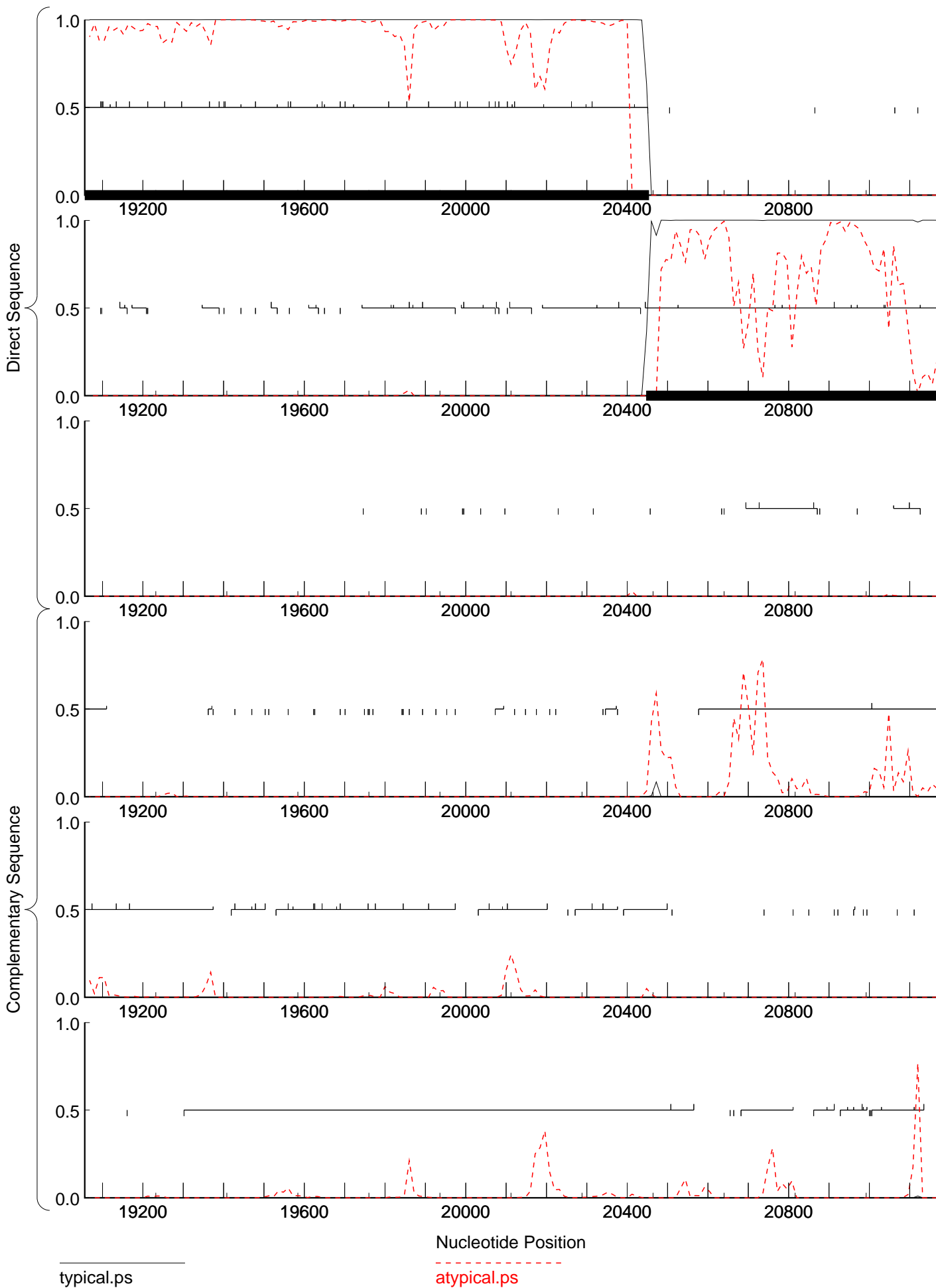


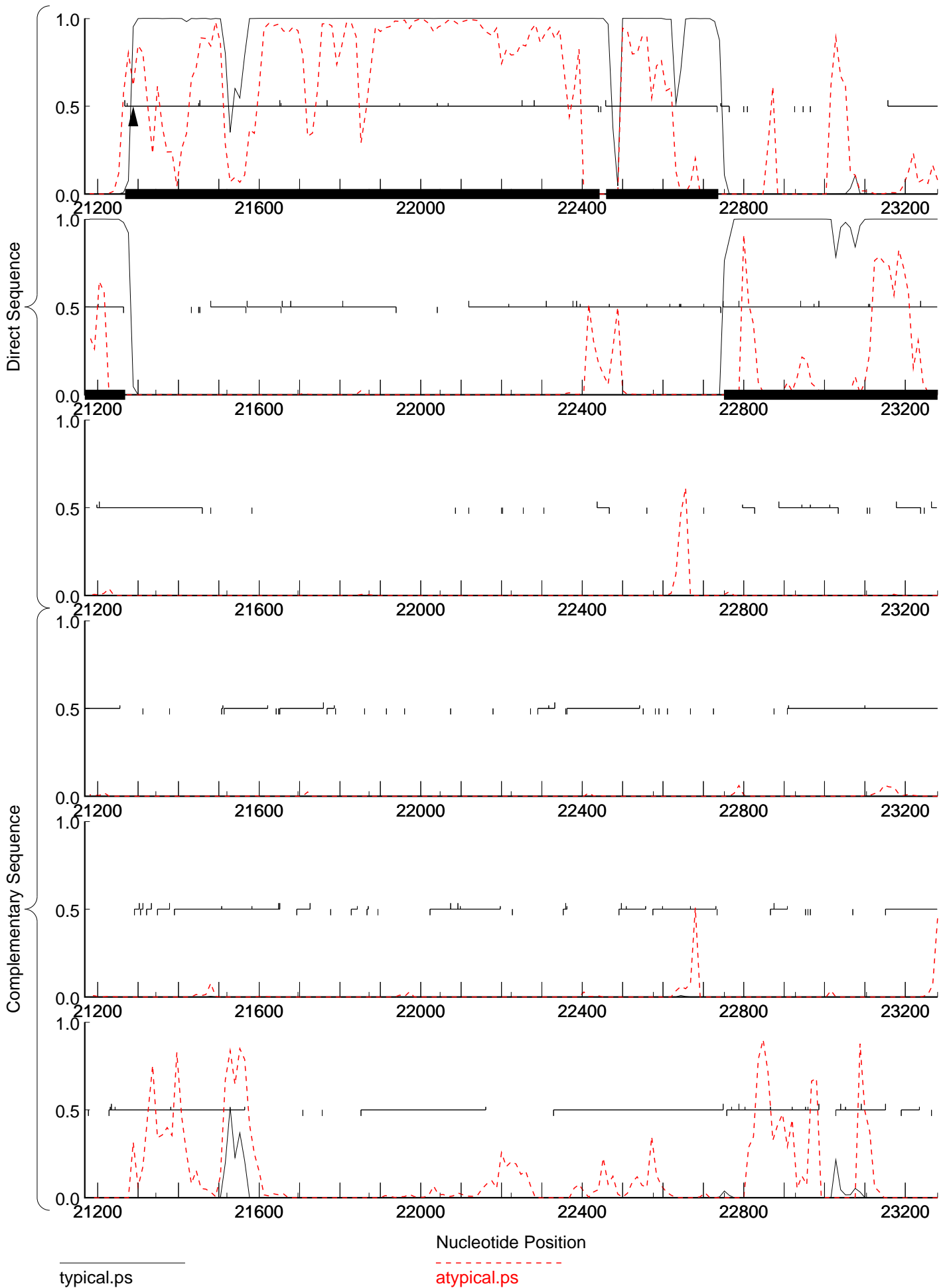


typical.ps

atypical.ps

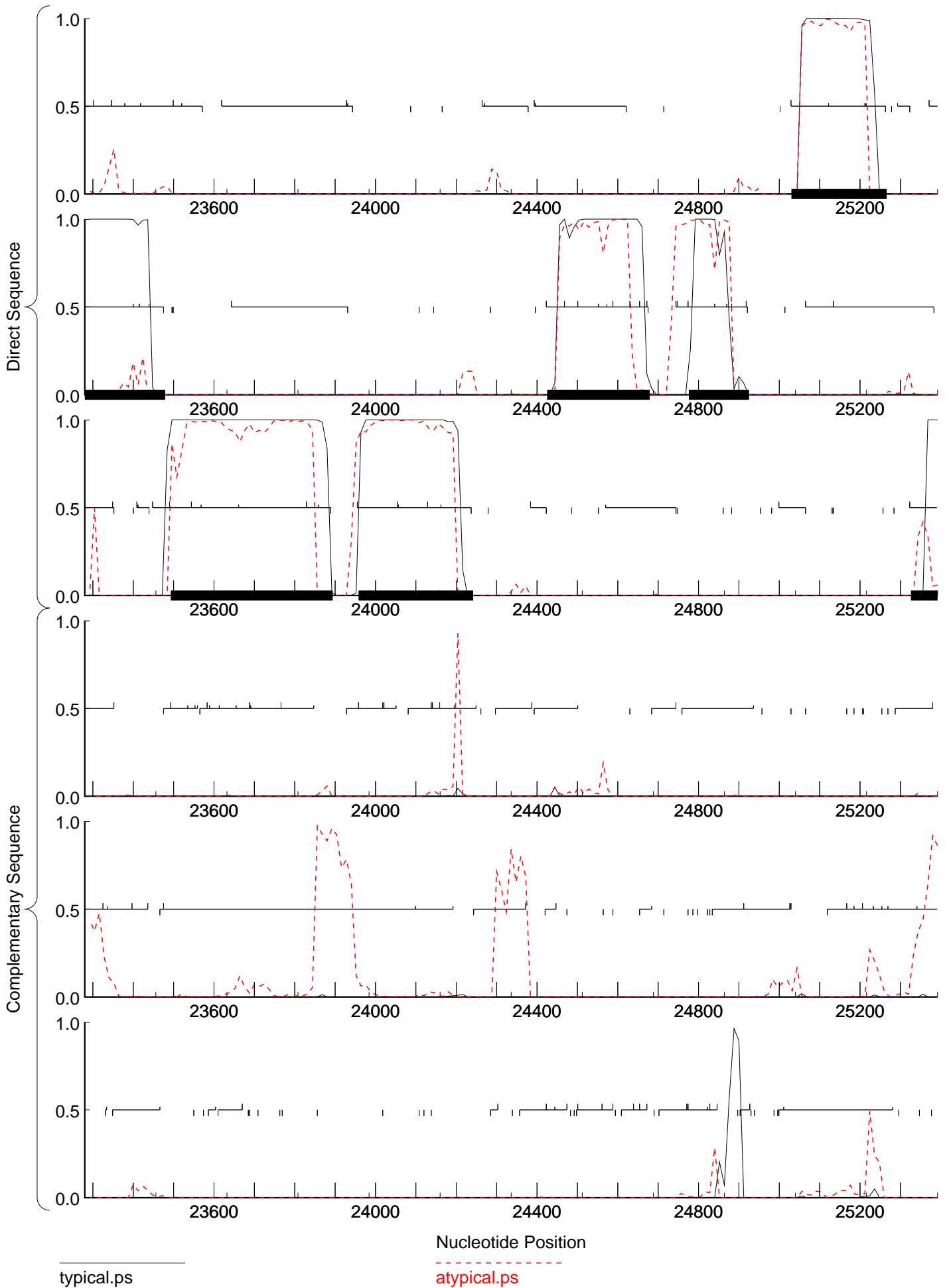


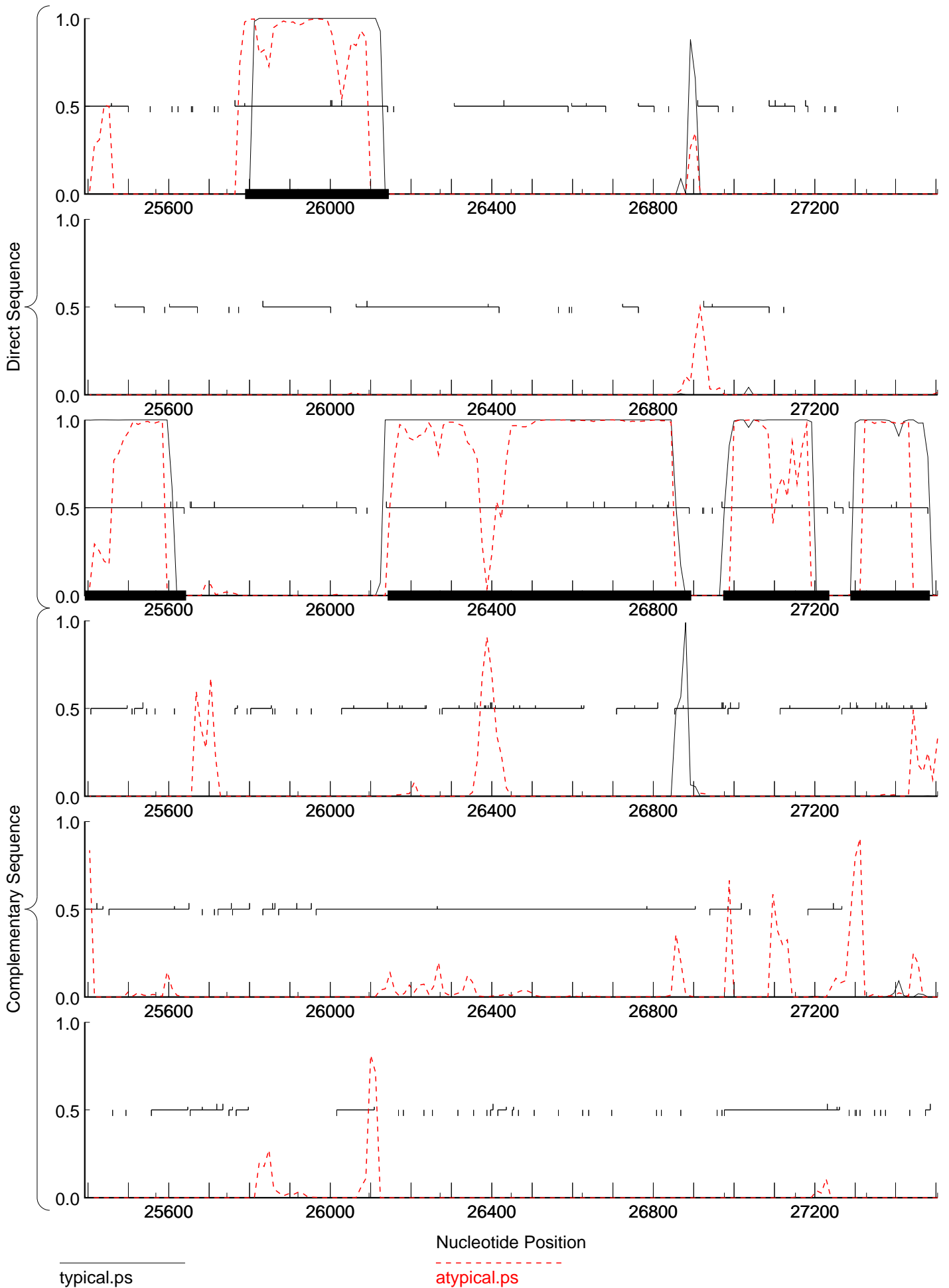


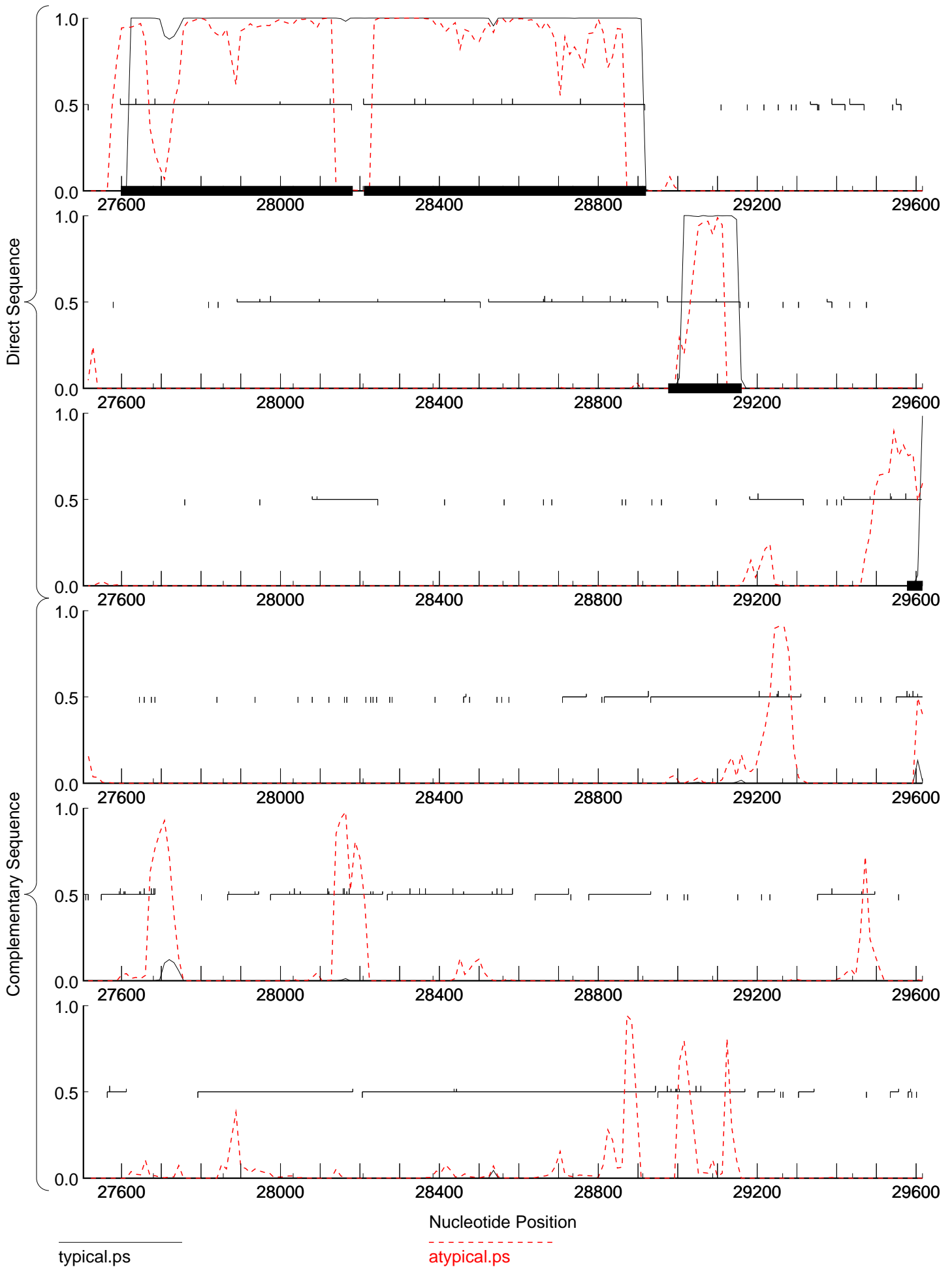


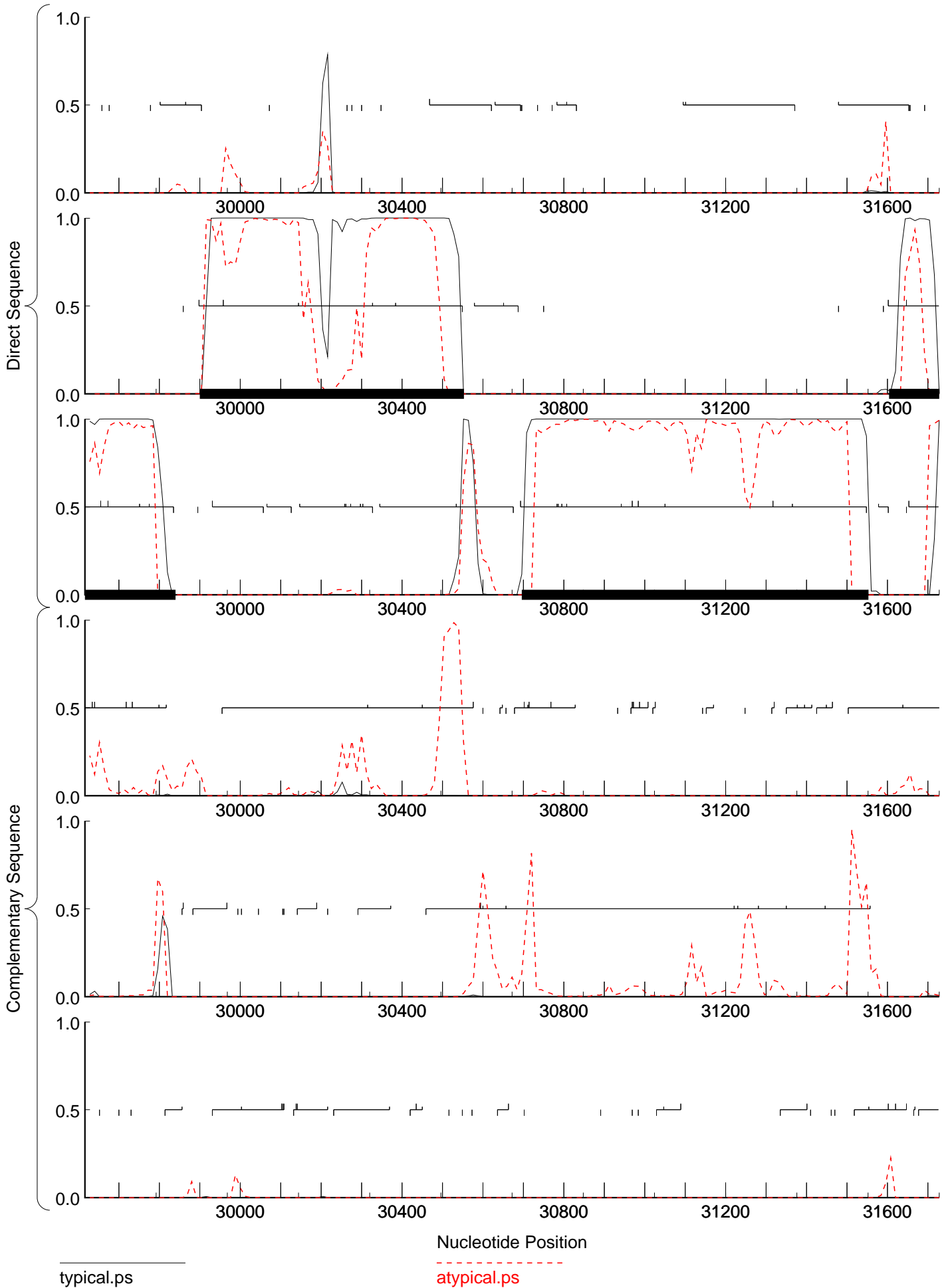
typical.ps

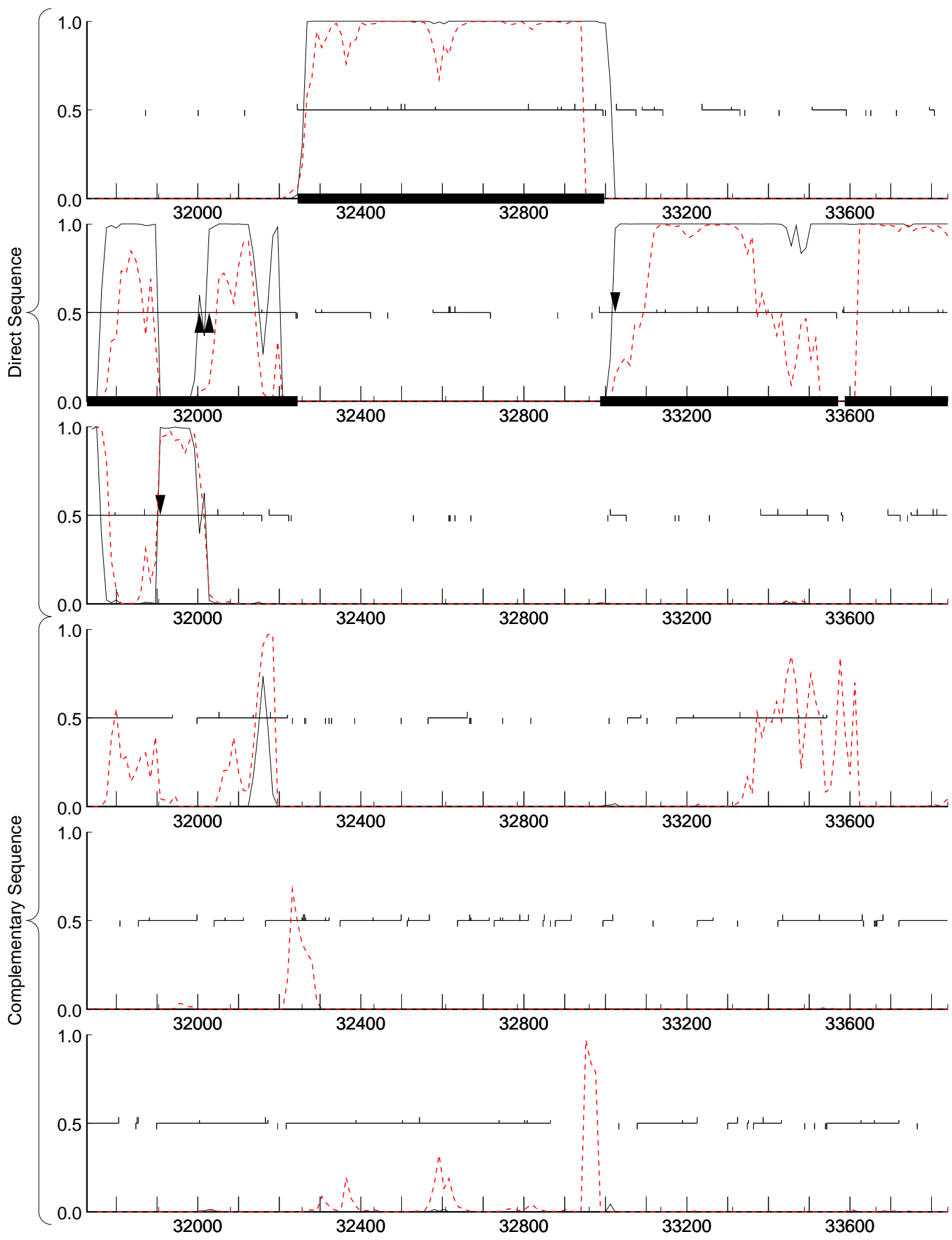
atypical.ps





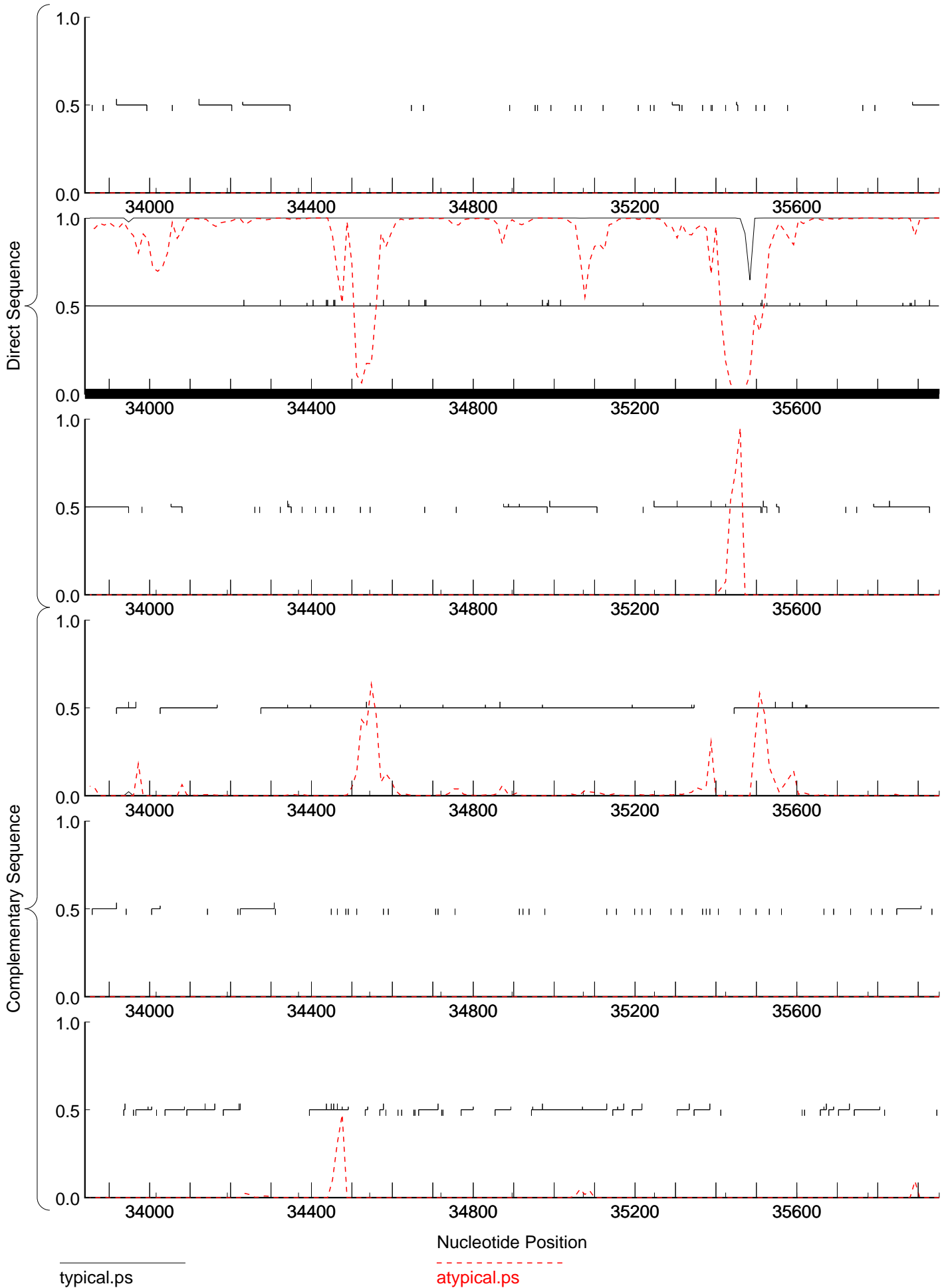


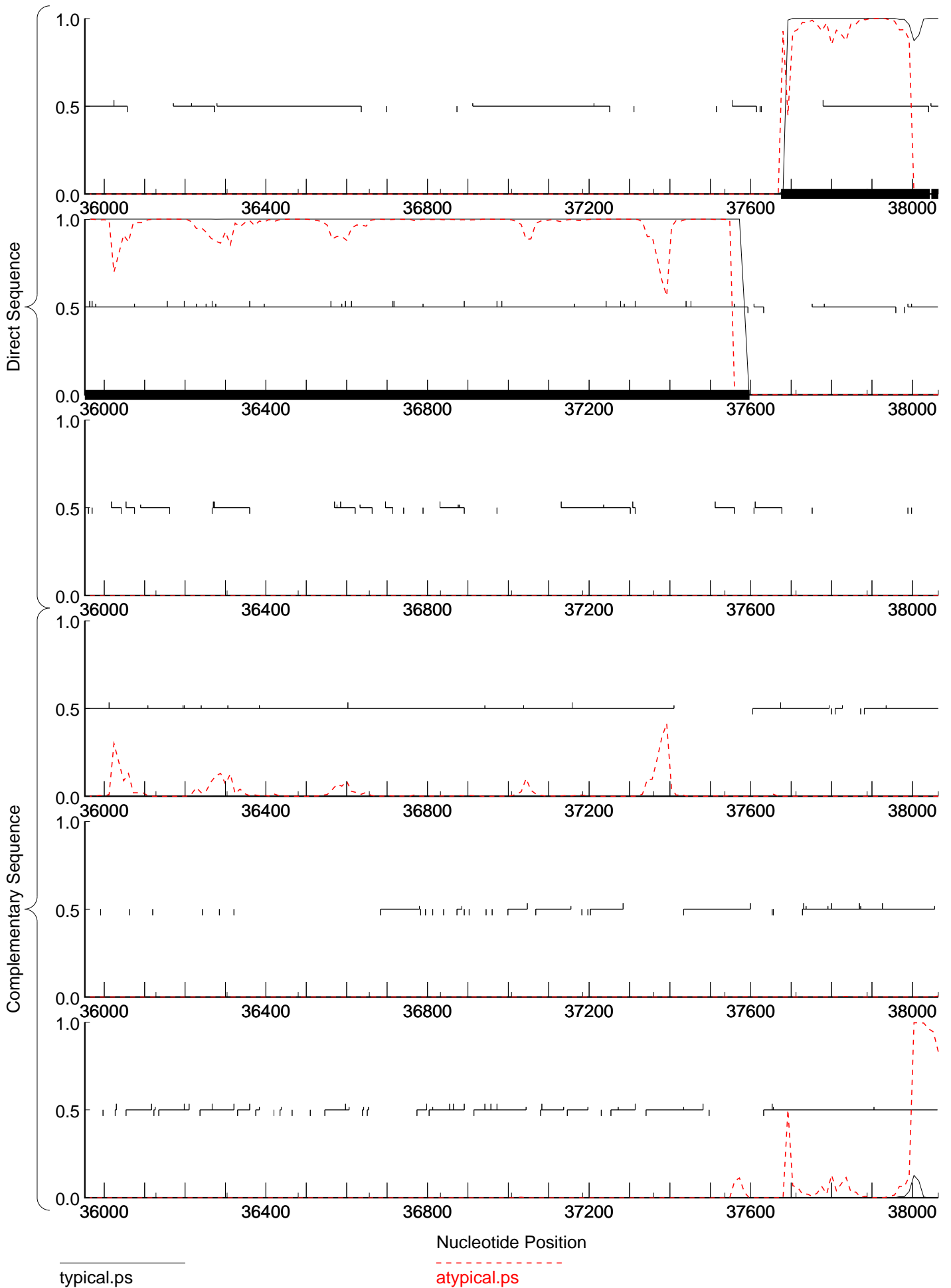


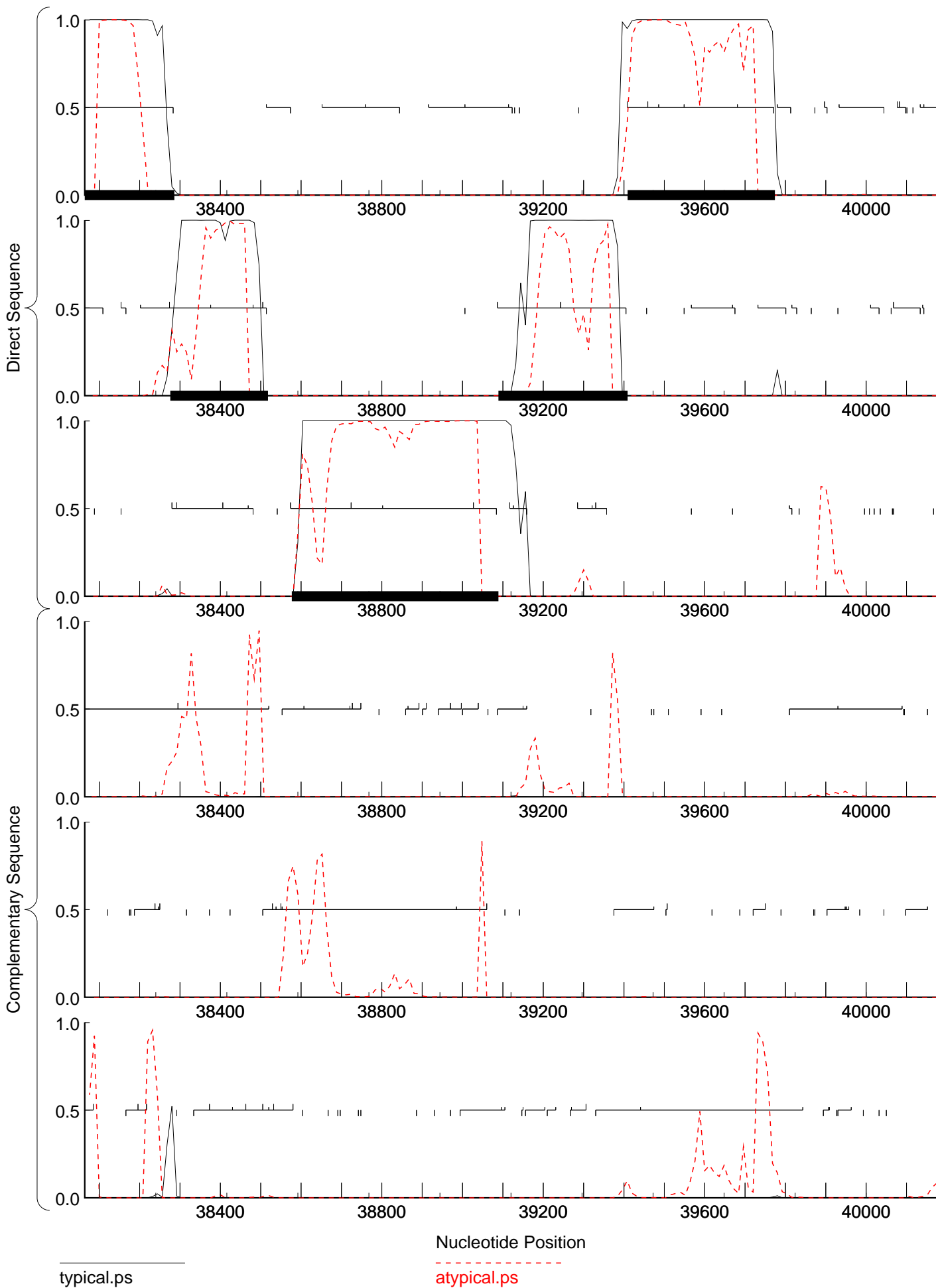


typical.ps

atypical.ps

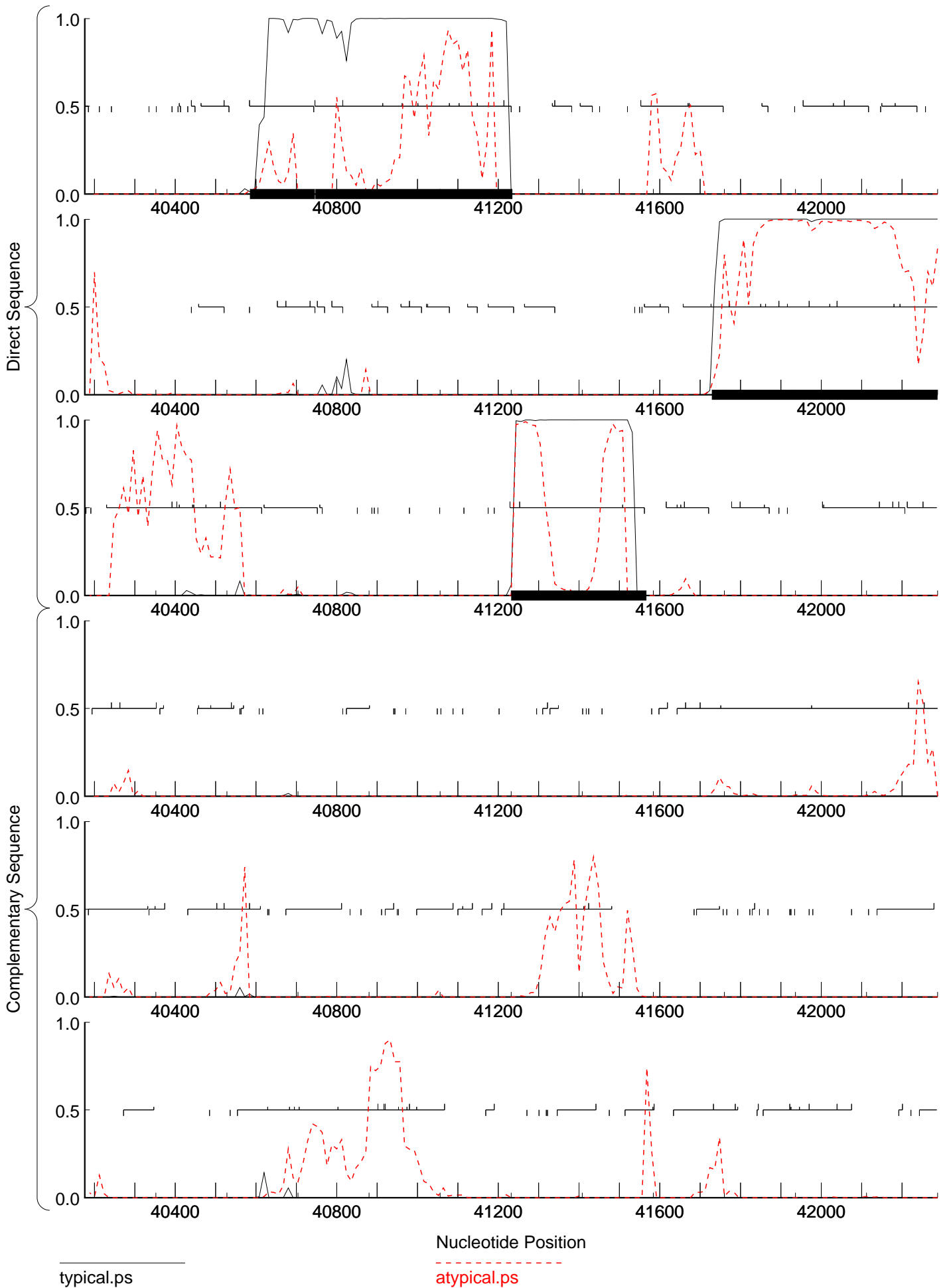


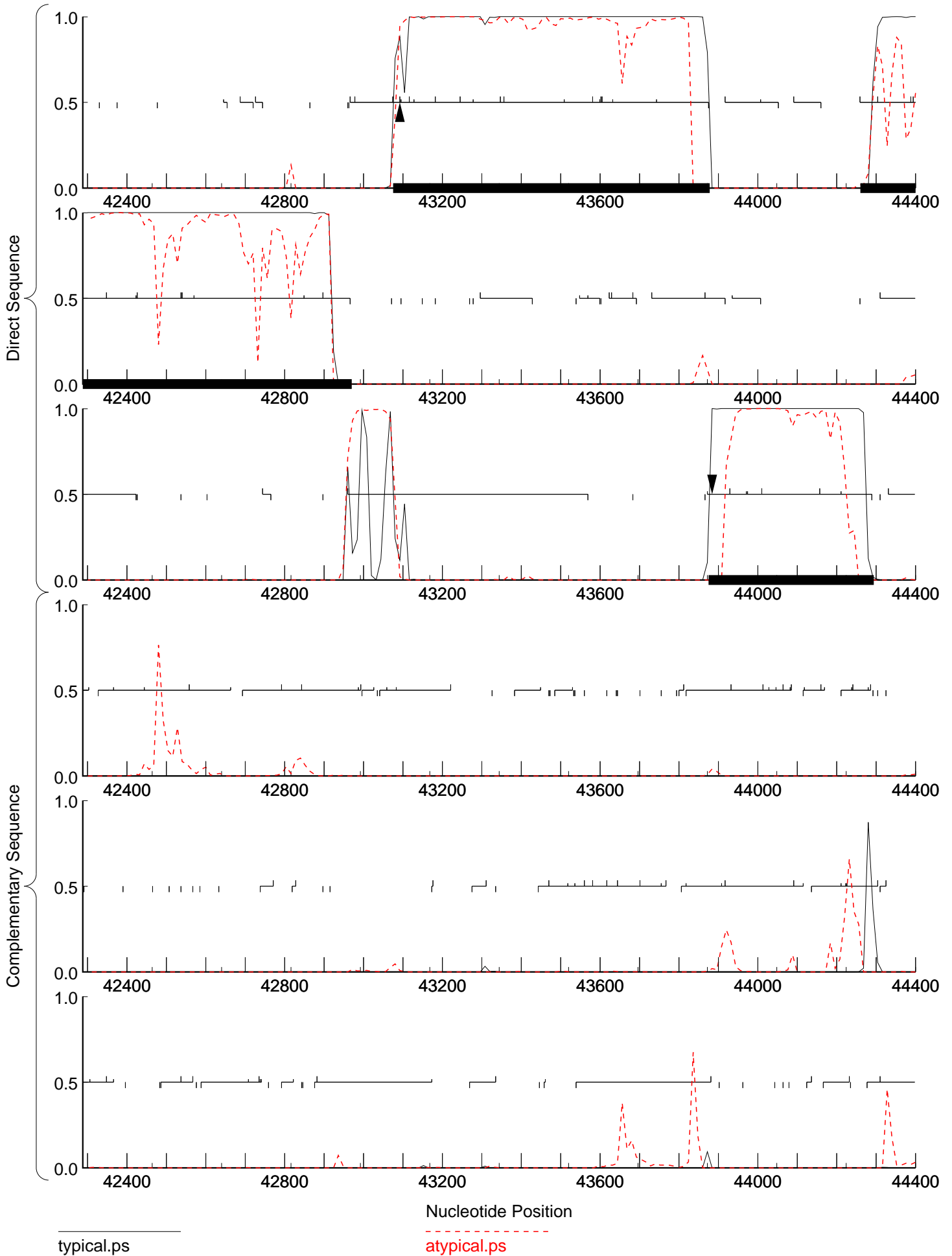


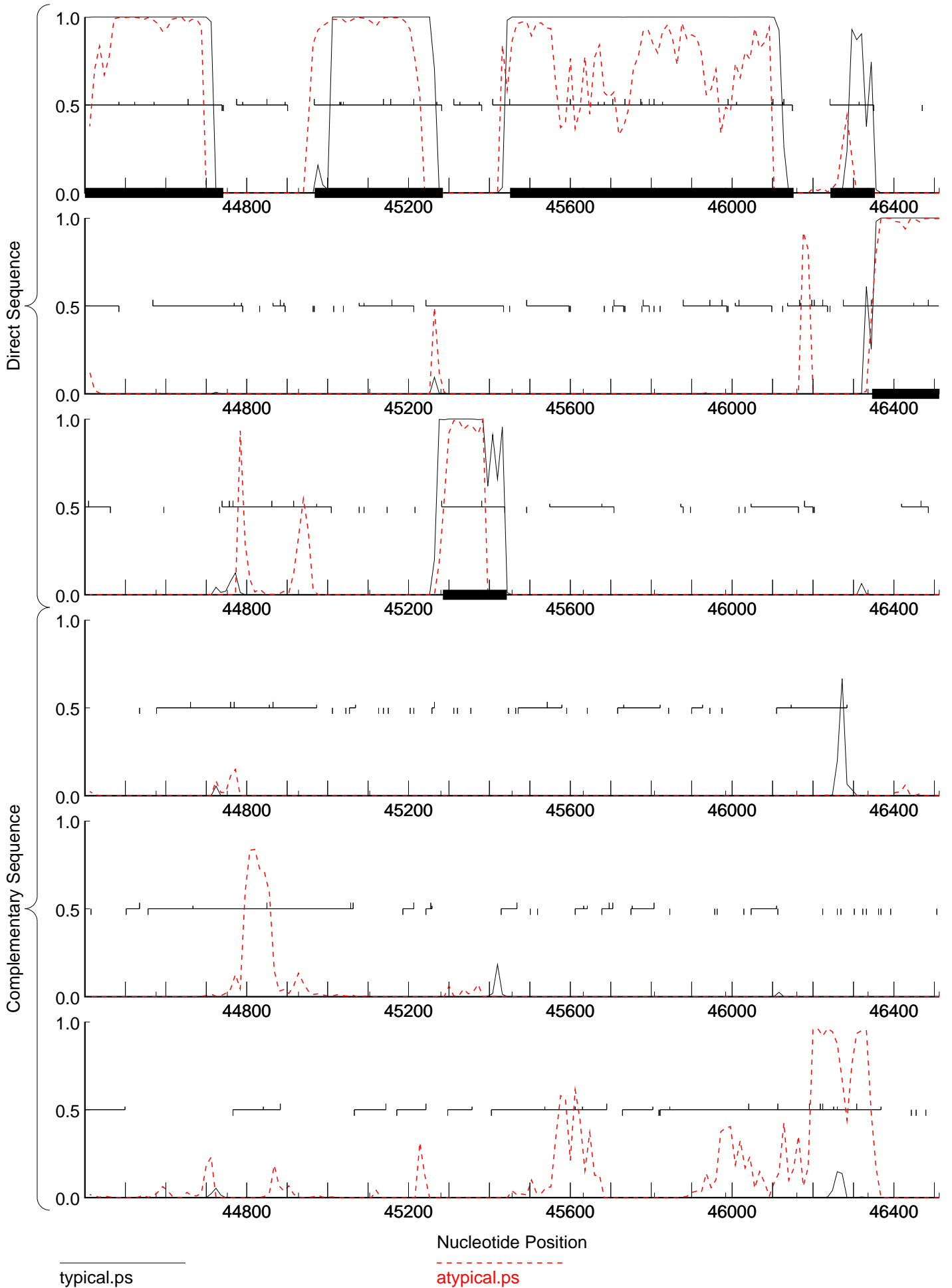


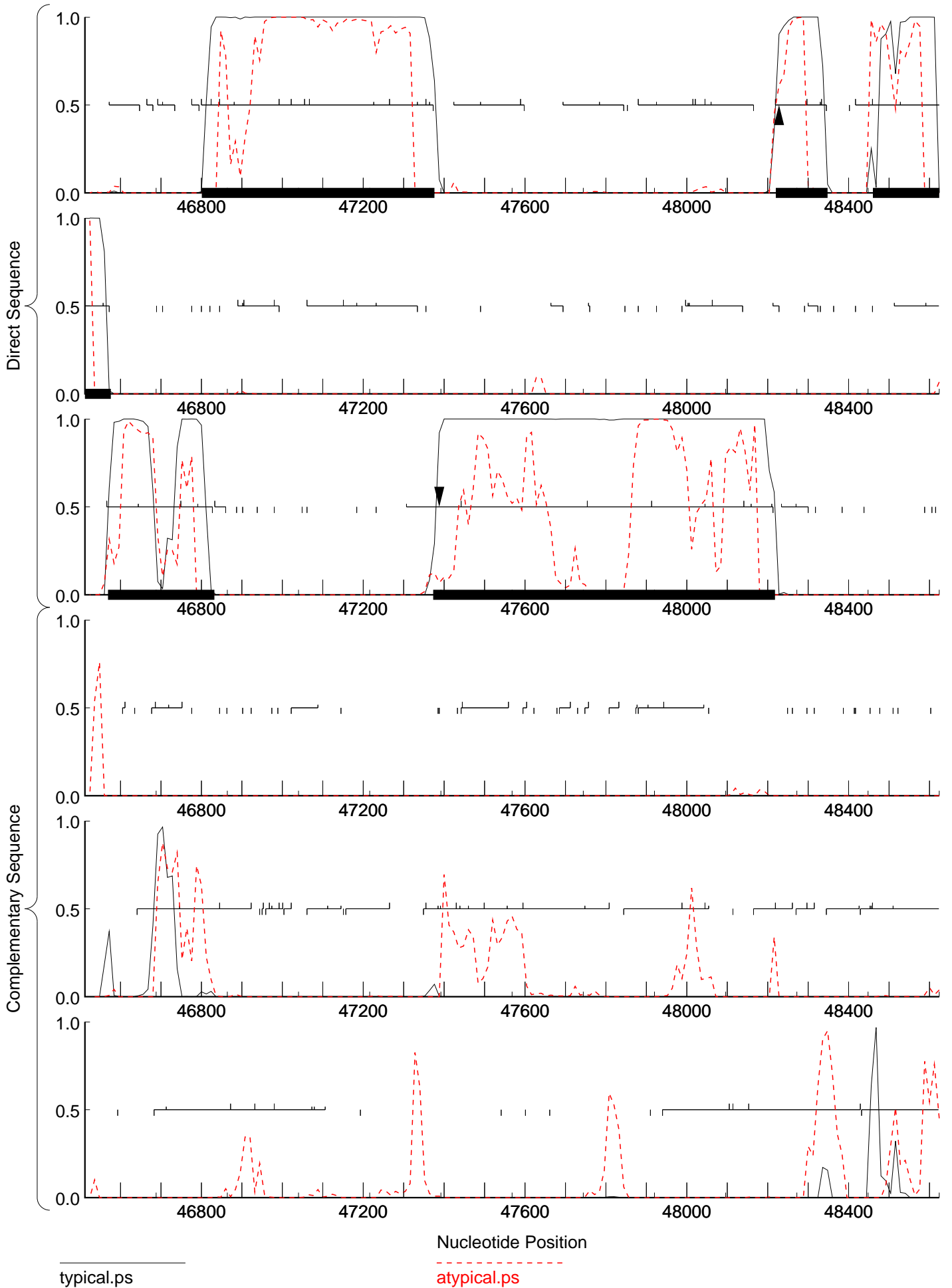
typical.ps

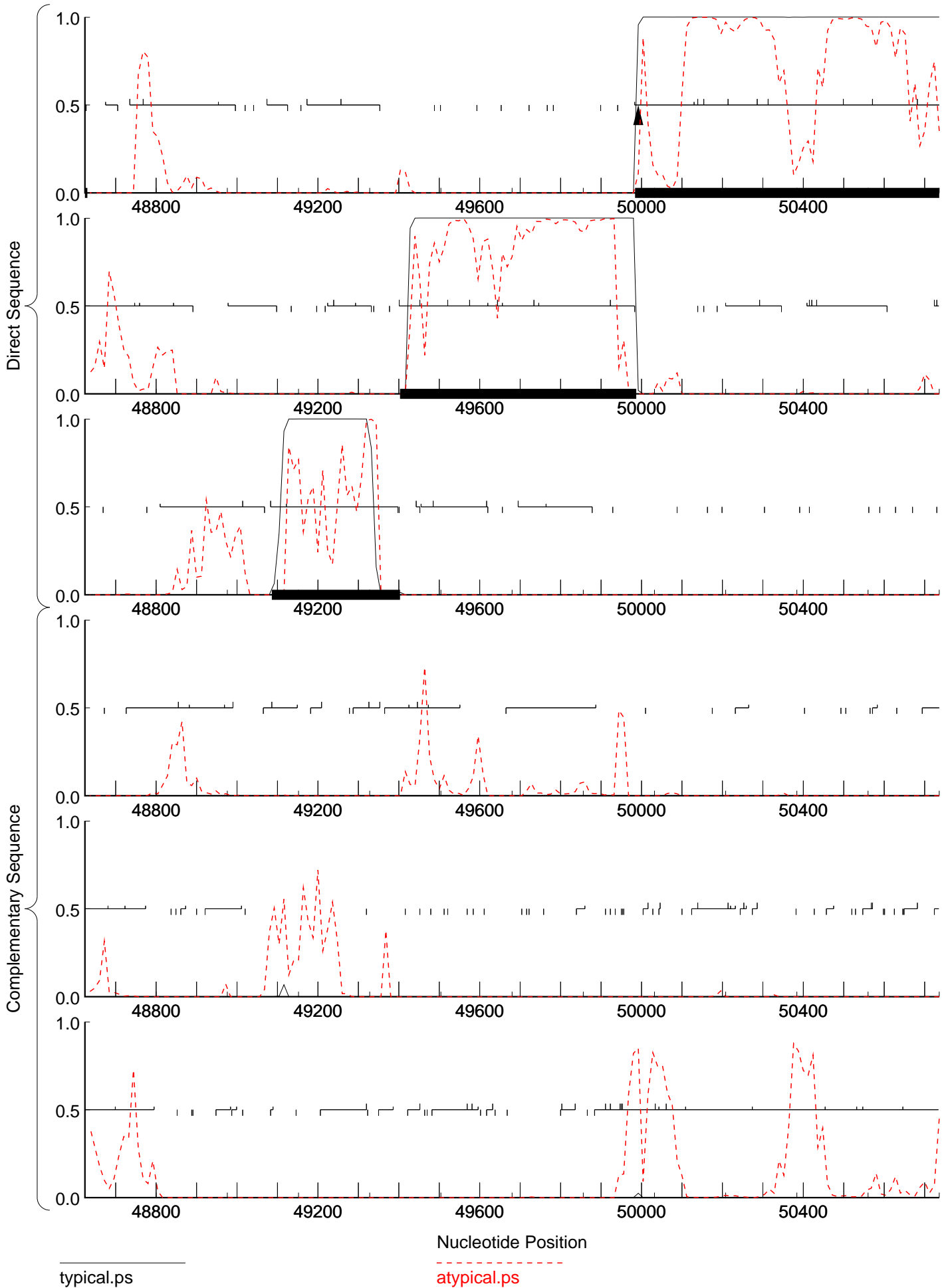
atypical.ps

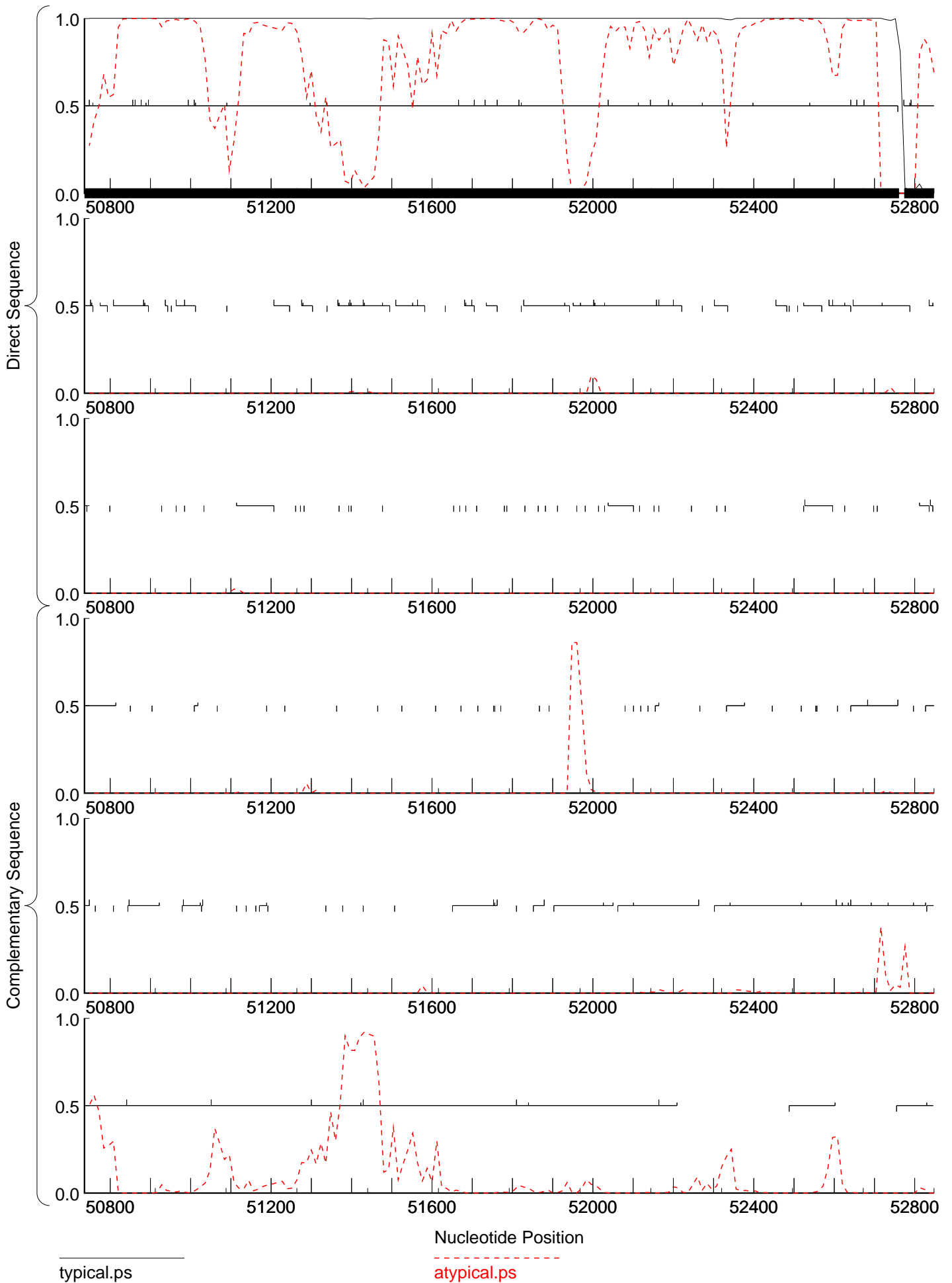


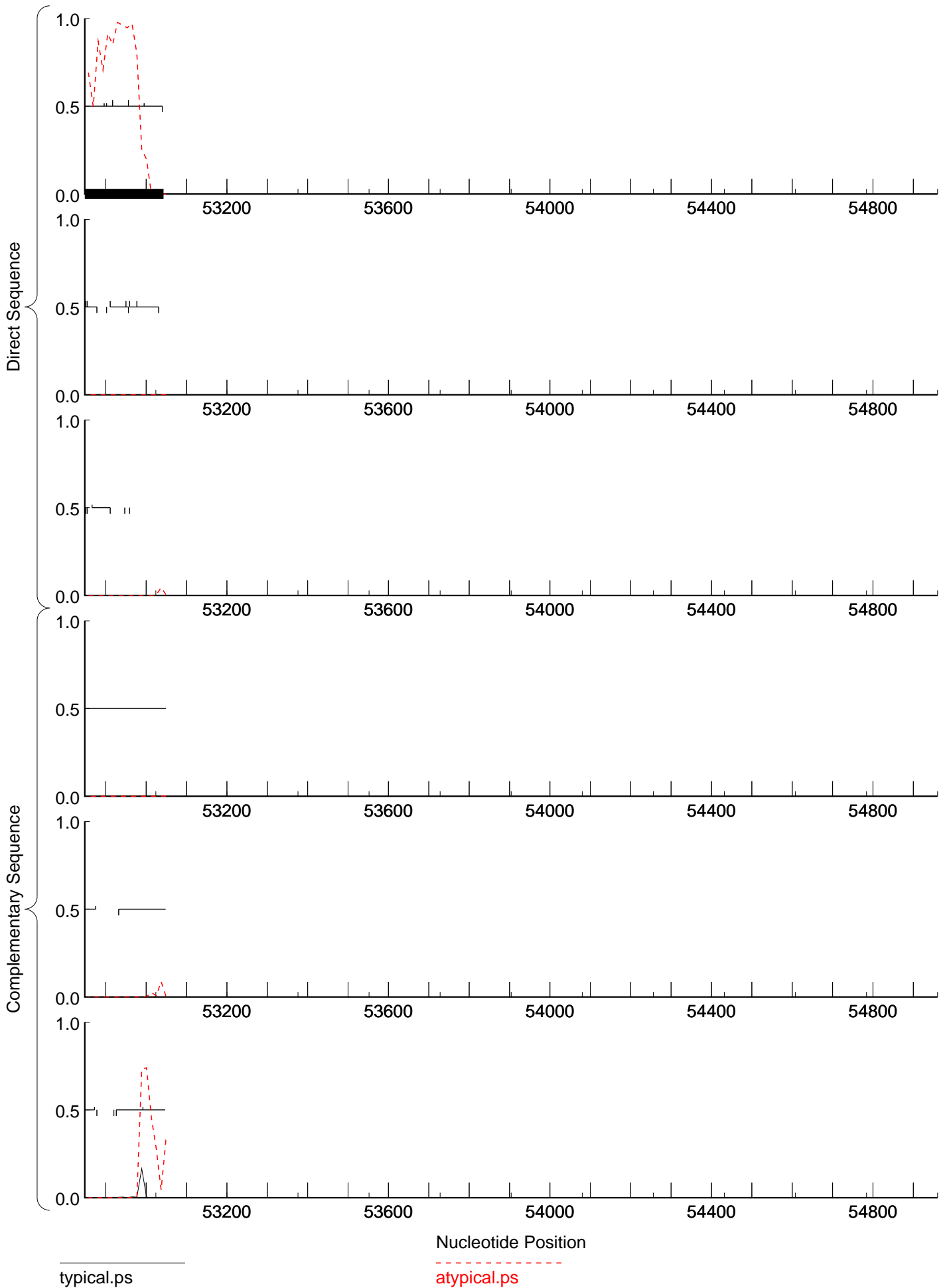












typical.ps

Nucleotide Position

atypical.ps