

GeneMark

Version 2.5p (09.08.06)

Copyright 1993 - M. Borodovsky, J. McIninch

PROGRAM INFORMATION

Sequence : Mycobacterium phage YungJamal complete sequence, 70214 bp including 4-base 3' overhang (GTC
Analysis Date : 6/19/18 at 0:53:29
Pages : 35
Sequence Length : 70214 bp
GC Content : 65.34%

Window Length : 96 bp
Window Step : 12 bp
Threshold Value : 0.500

PS-Version : 1.2

GeneMark Options : PostScript graph,
Mark ORFs / splice sites,
List ORFs,
List regions and/or splice sites,

Matrix notes & comments

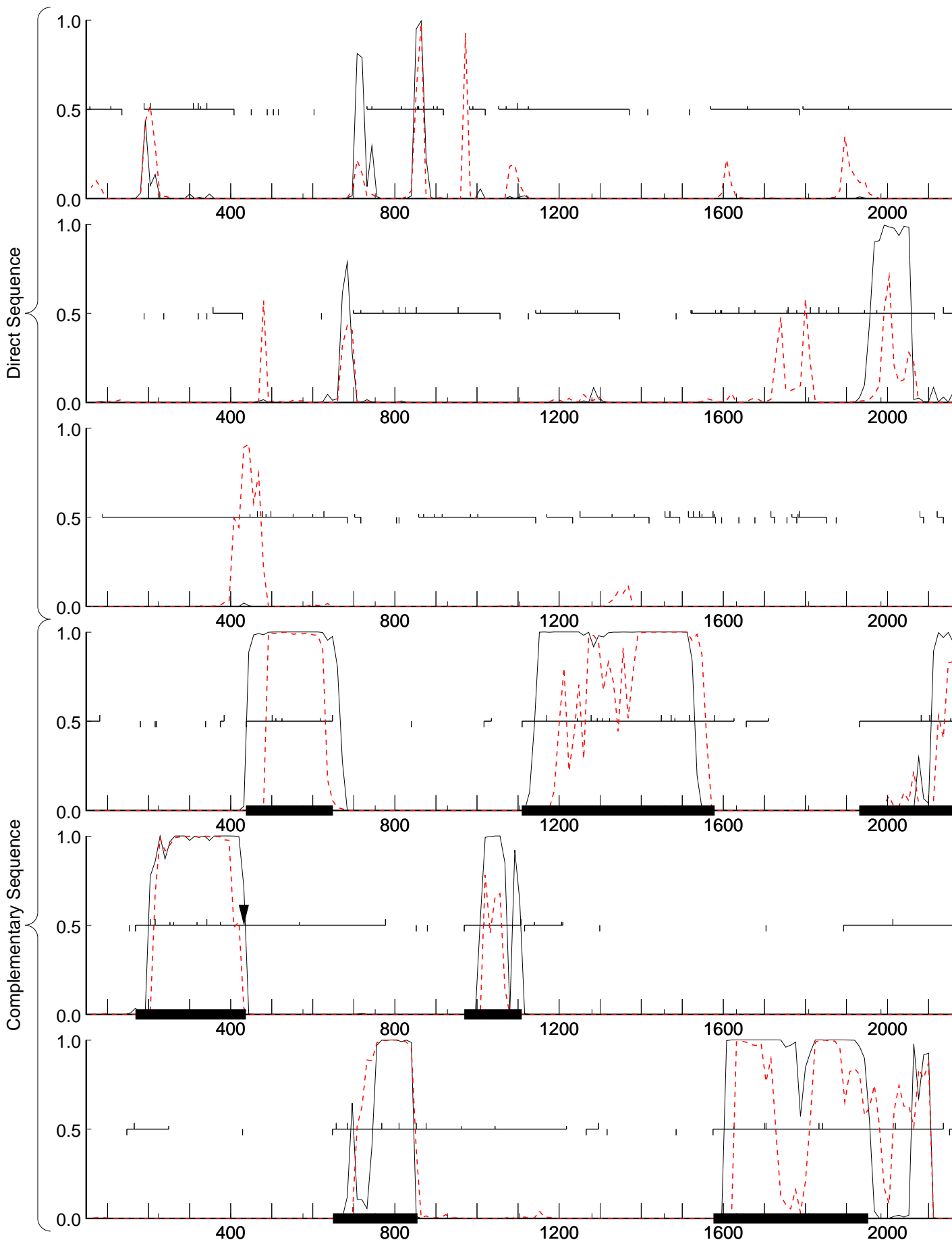
Training set derived by GeneMarkS, 4.30 October 2014
Tue Jun 19 00:53:29 2018

MATRIX INFORMATION

Matrix : -
Author : -
Order : 4

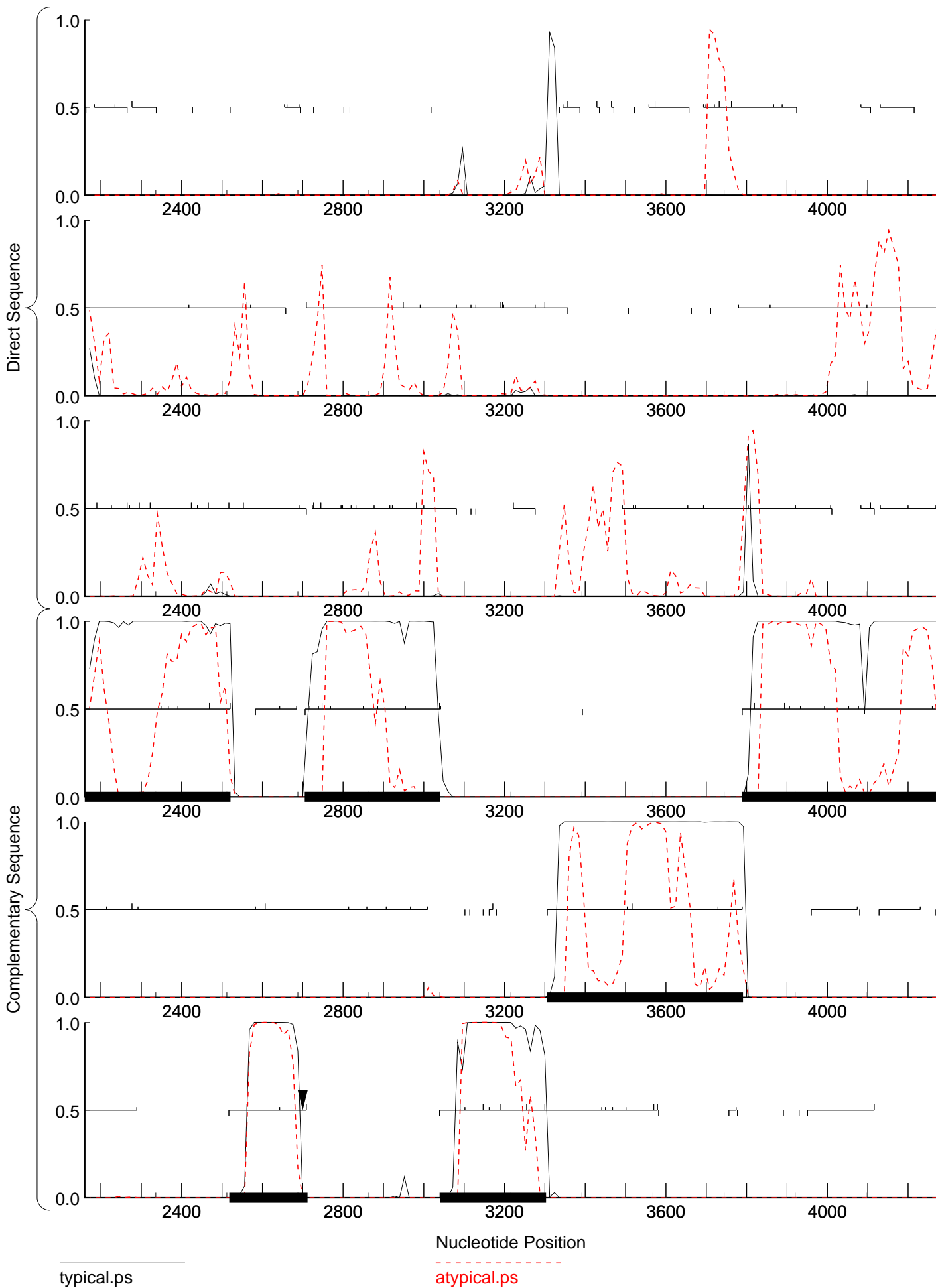
Send questions / comments to:
Dr. M. Borodovsky
Georgia Institute of Technology
School of Biology
Atlanta, GA 30332-0230

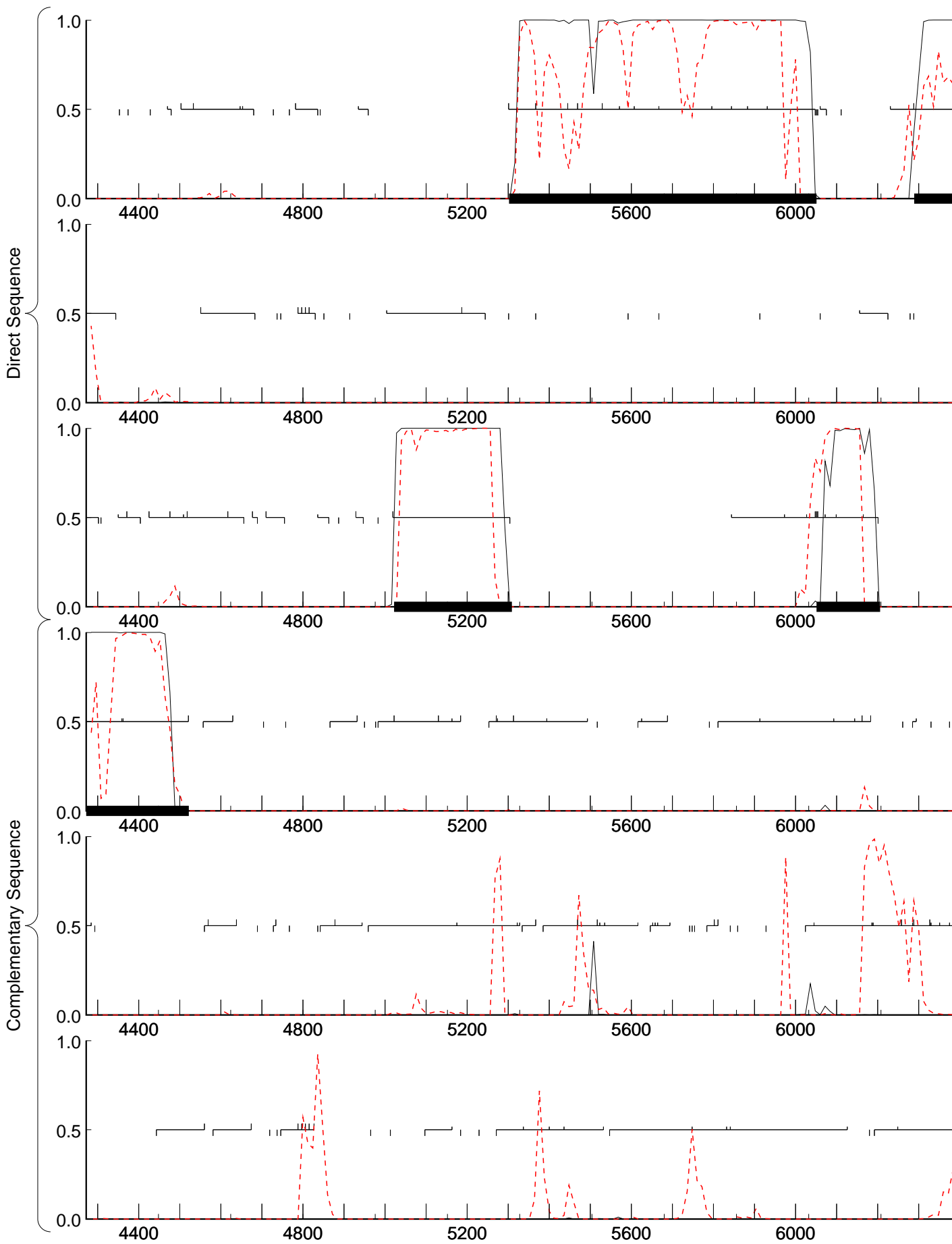
For help or information, send electronic mail to: custserv@genepro.com, or mark@amber.biology.gatech.edu



typical.ps

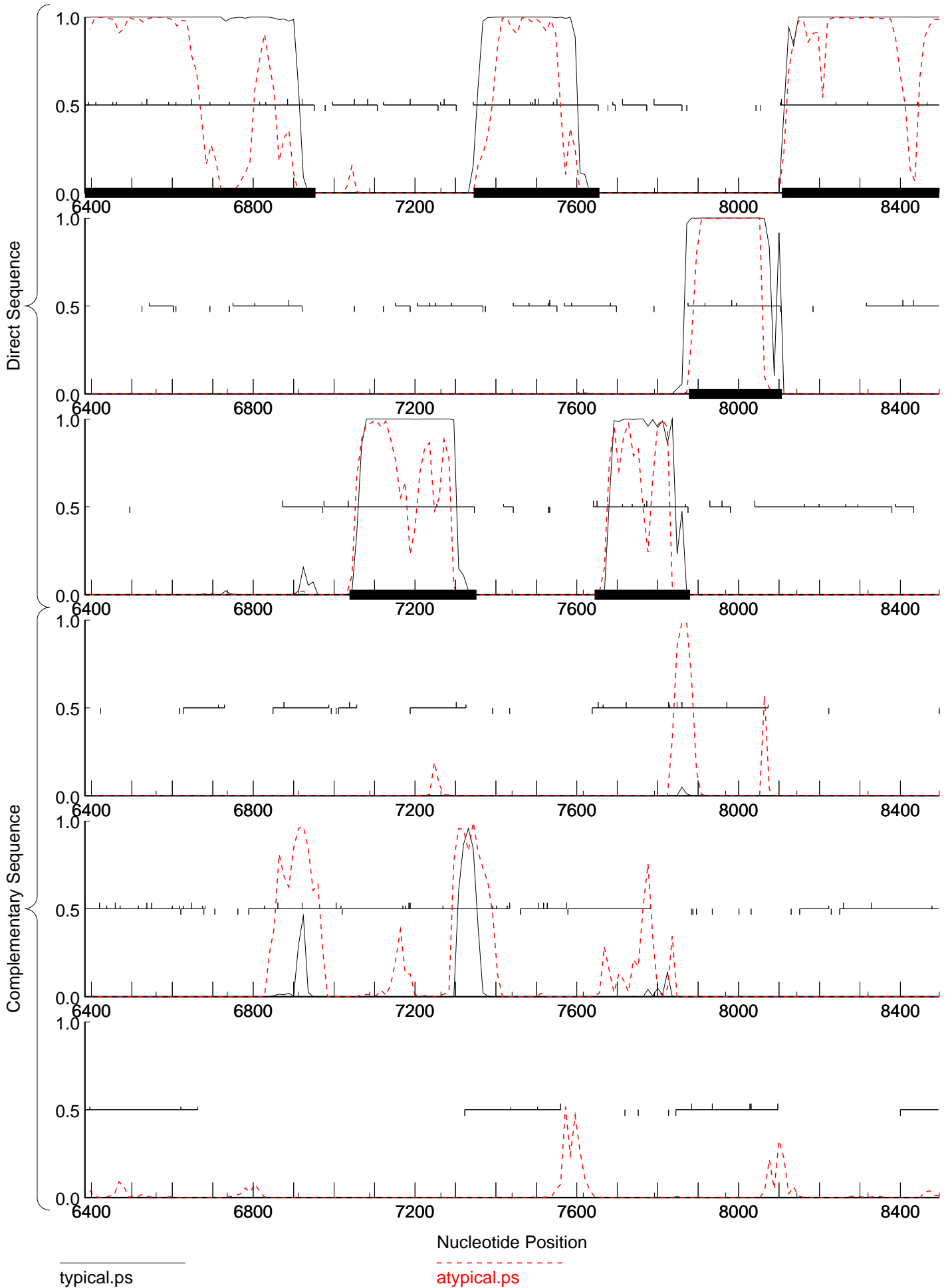
atypical.ps

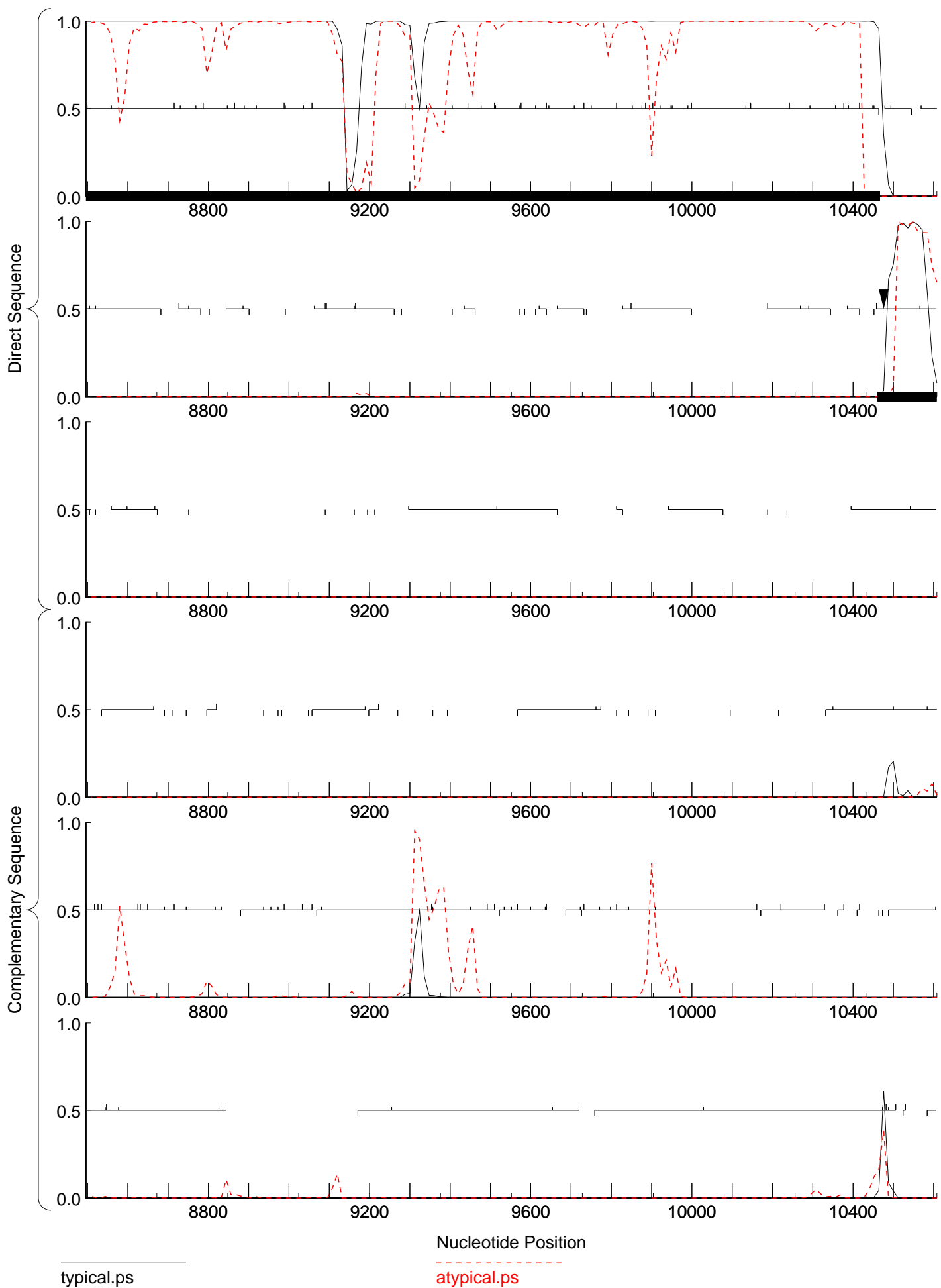




typical.ps

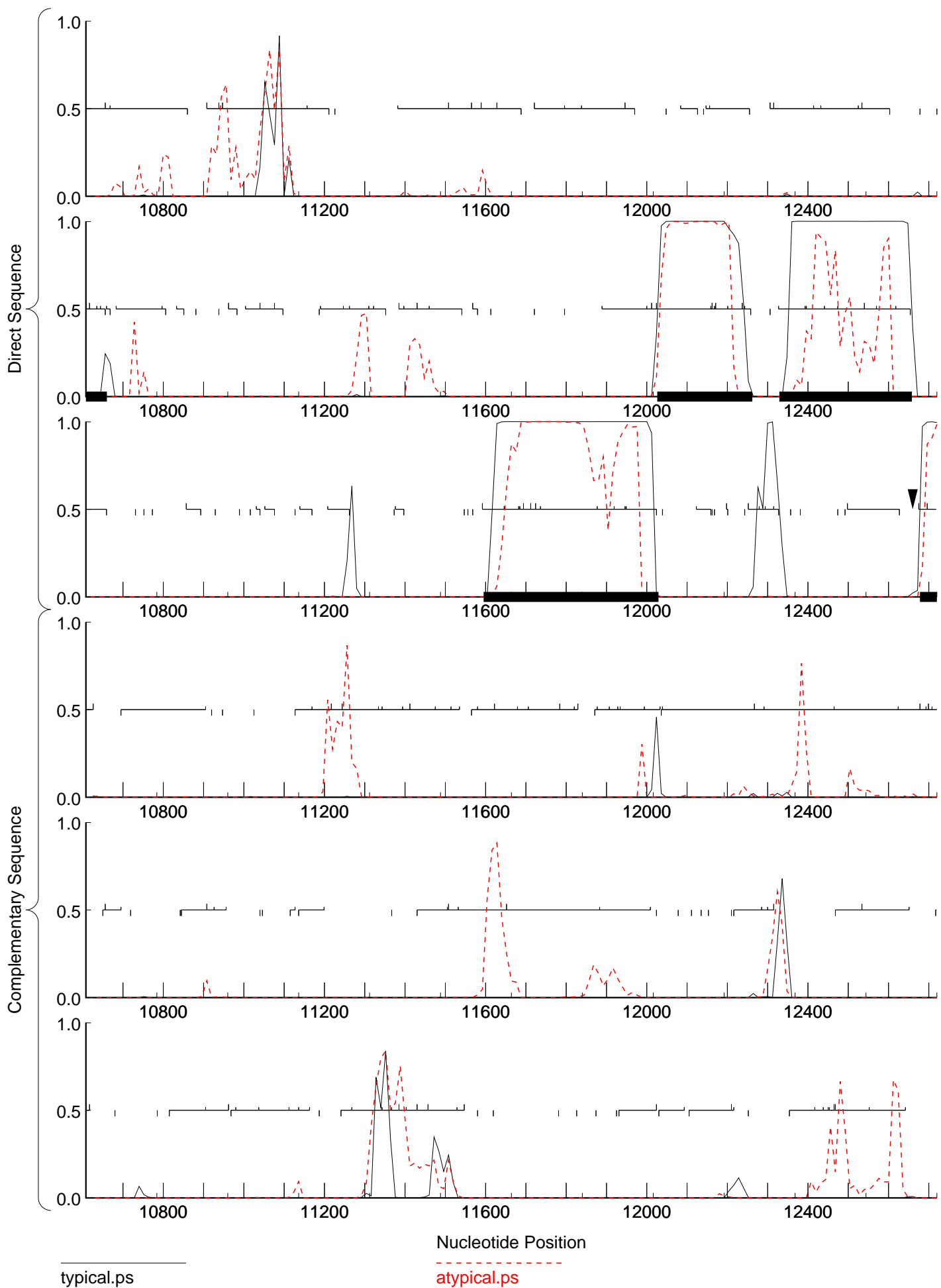
atypical.ps

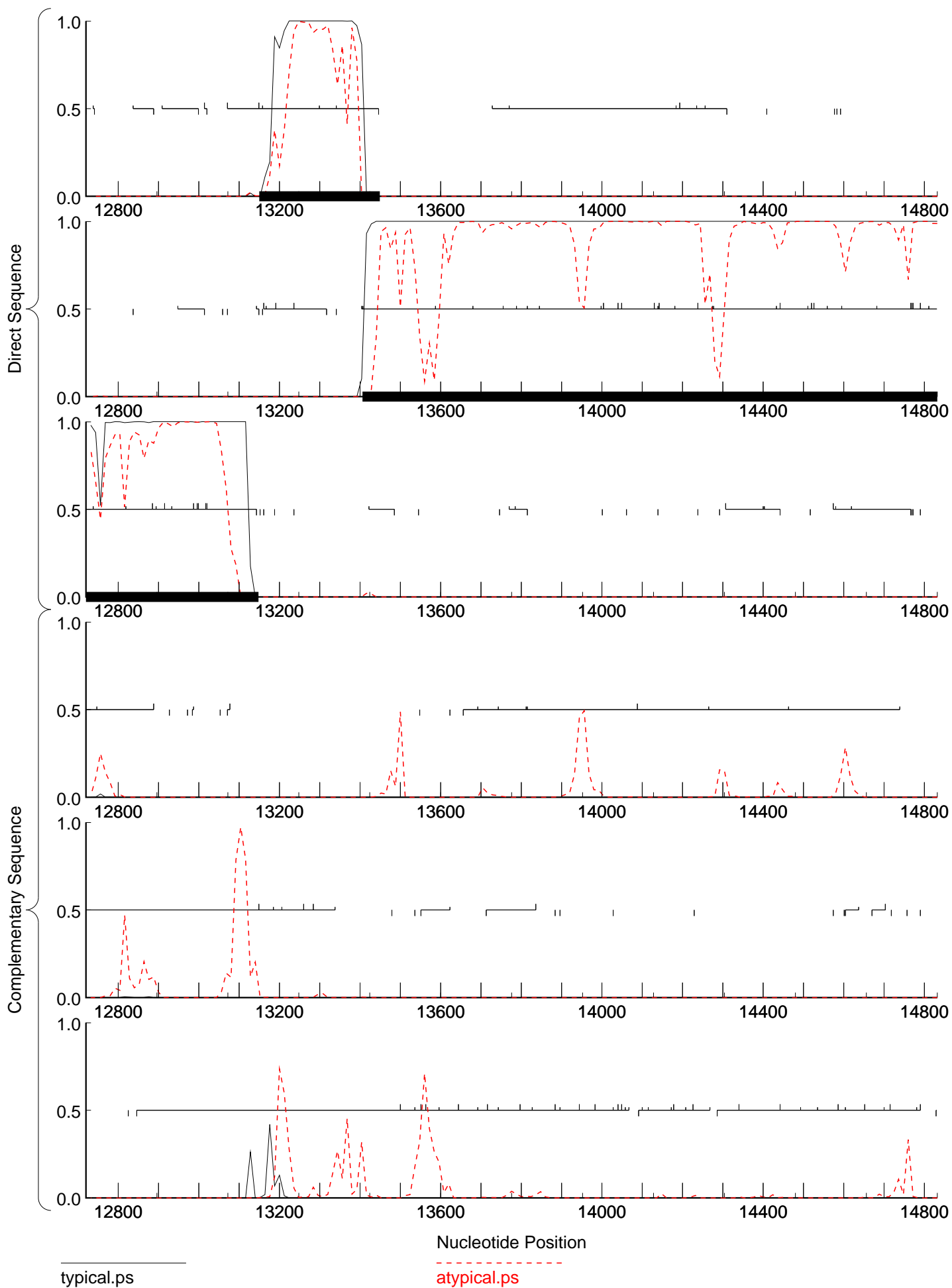


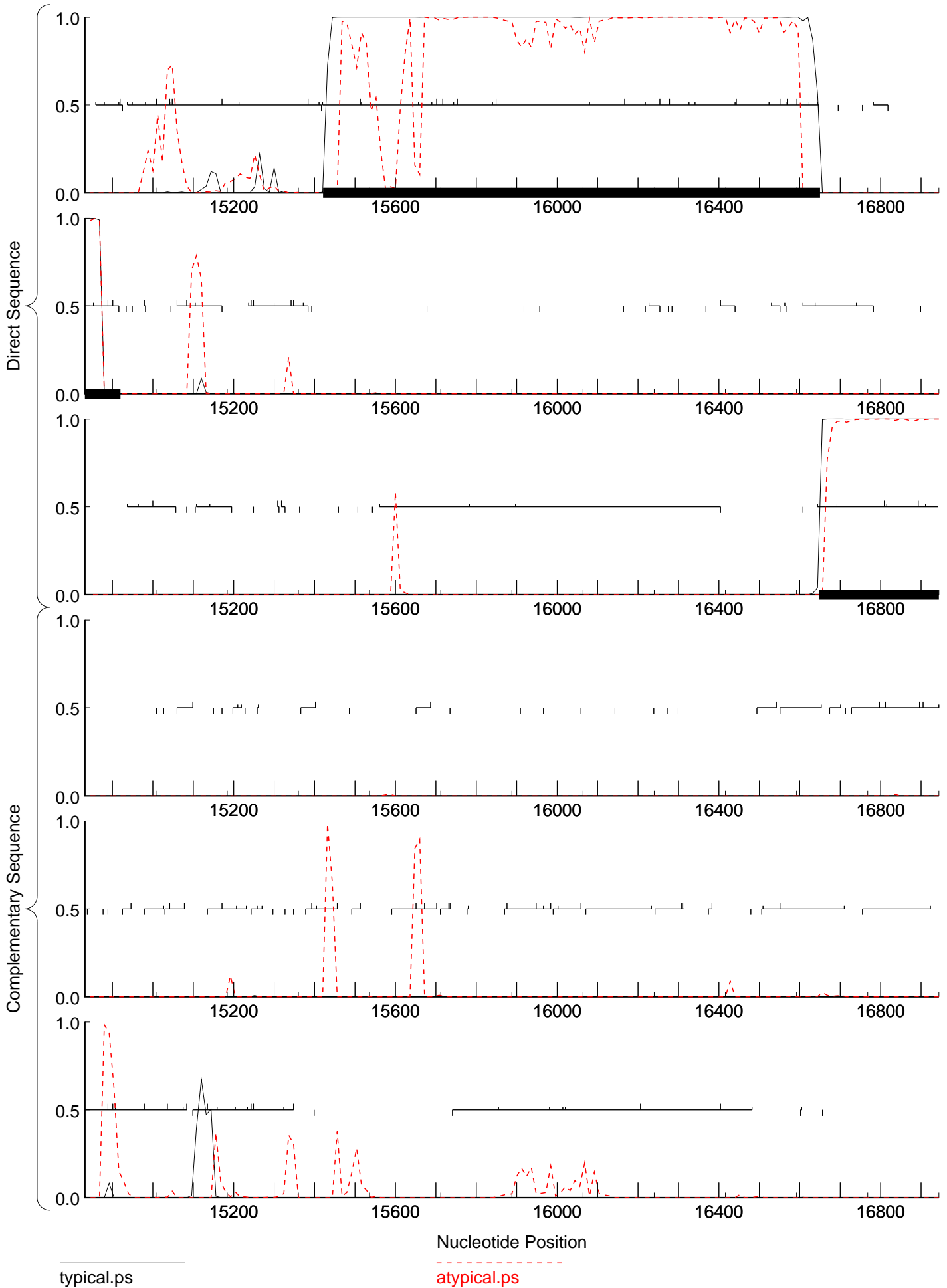


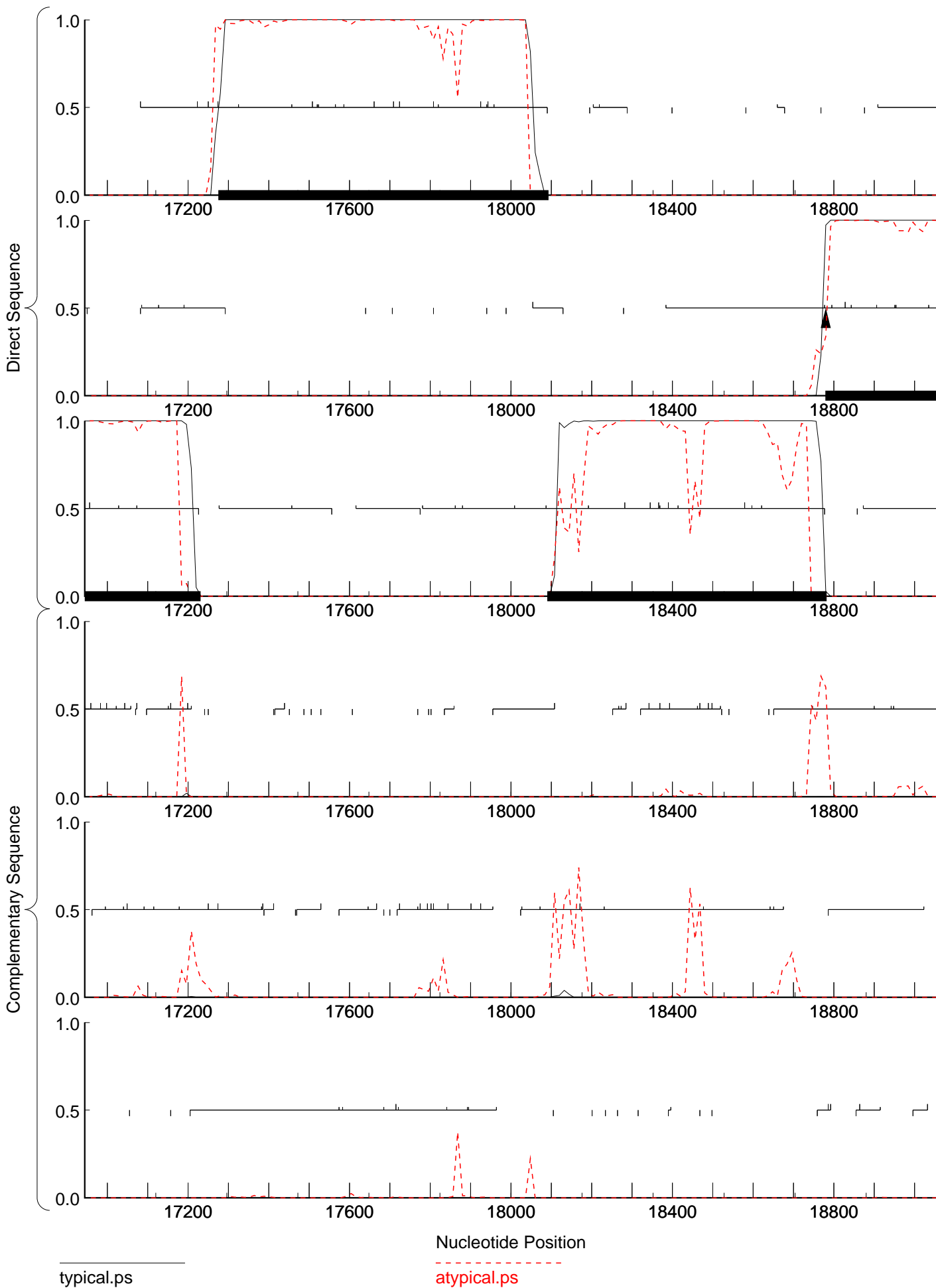
typical.ps

atypical.ps



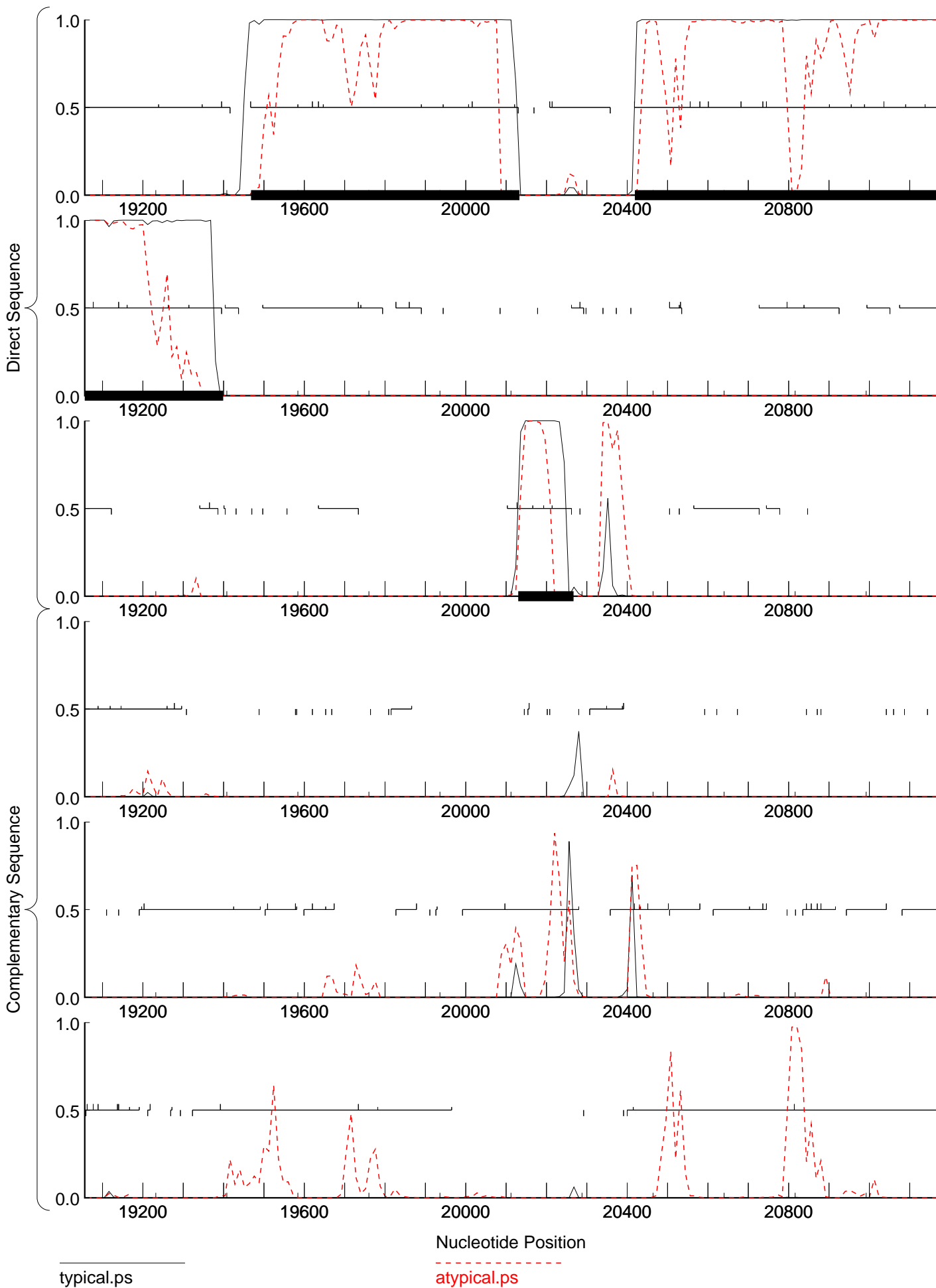


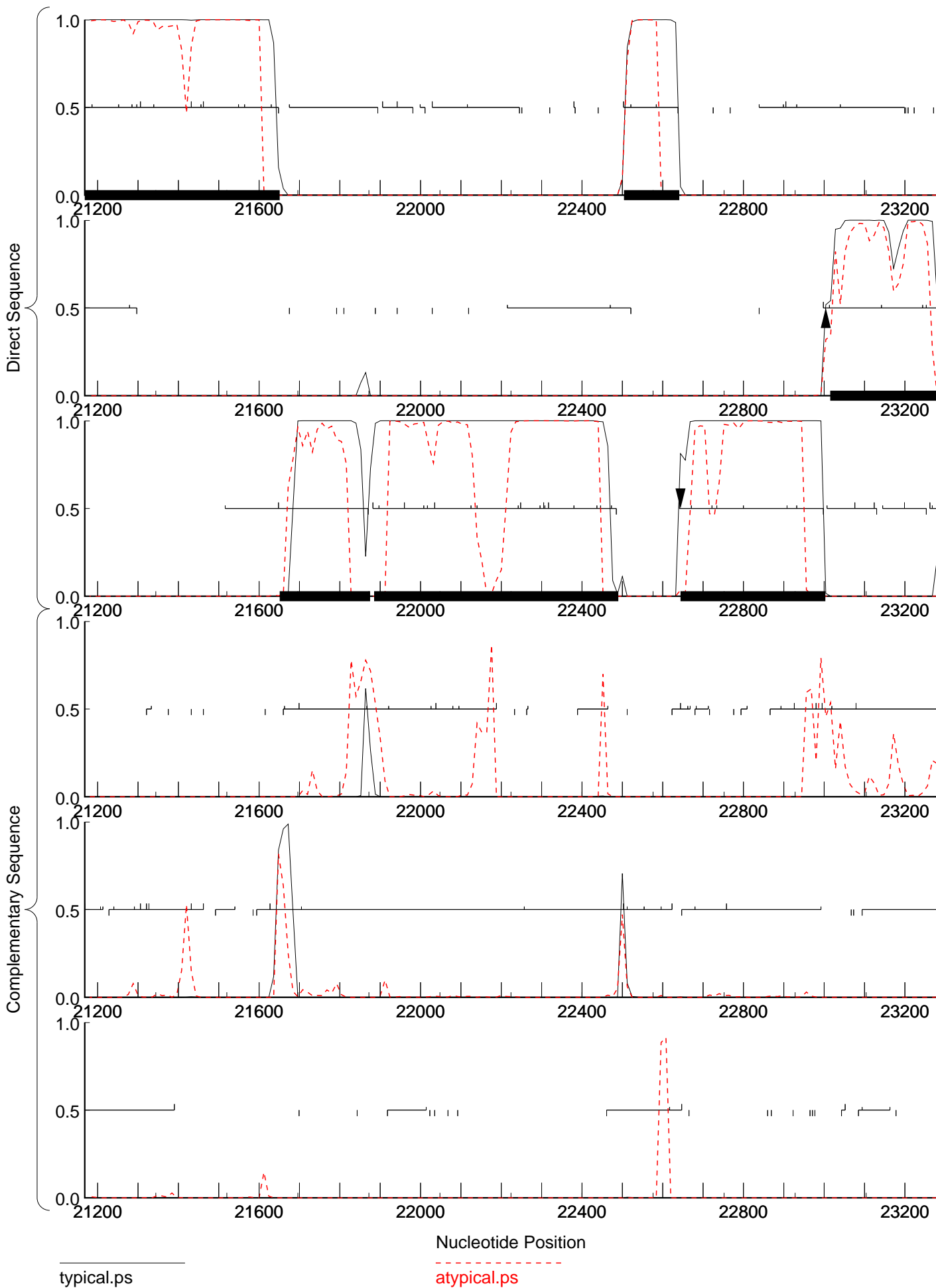


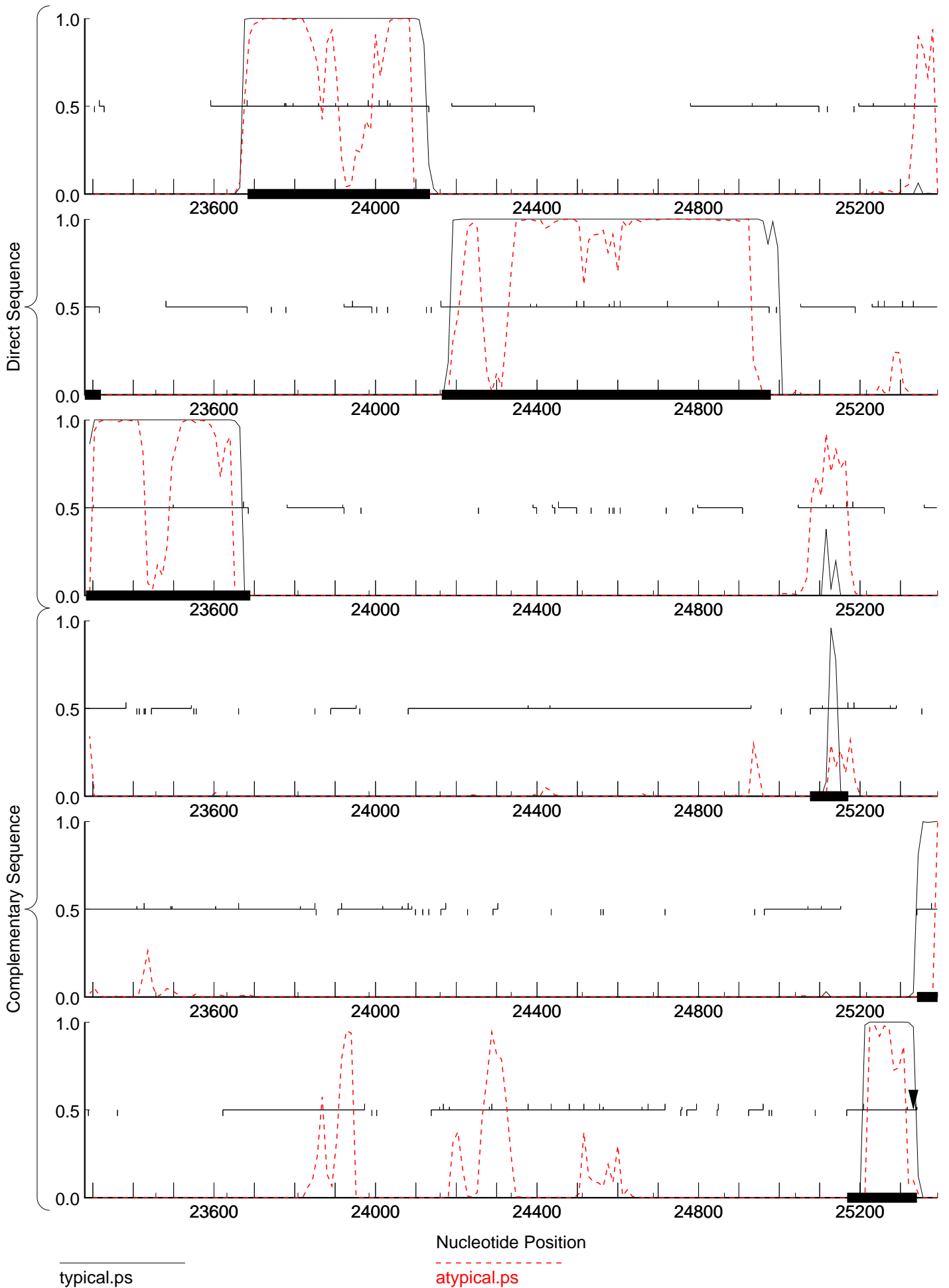


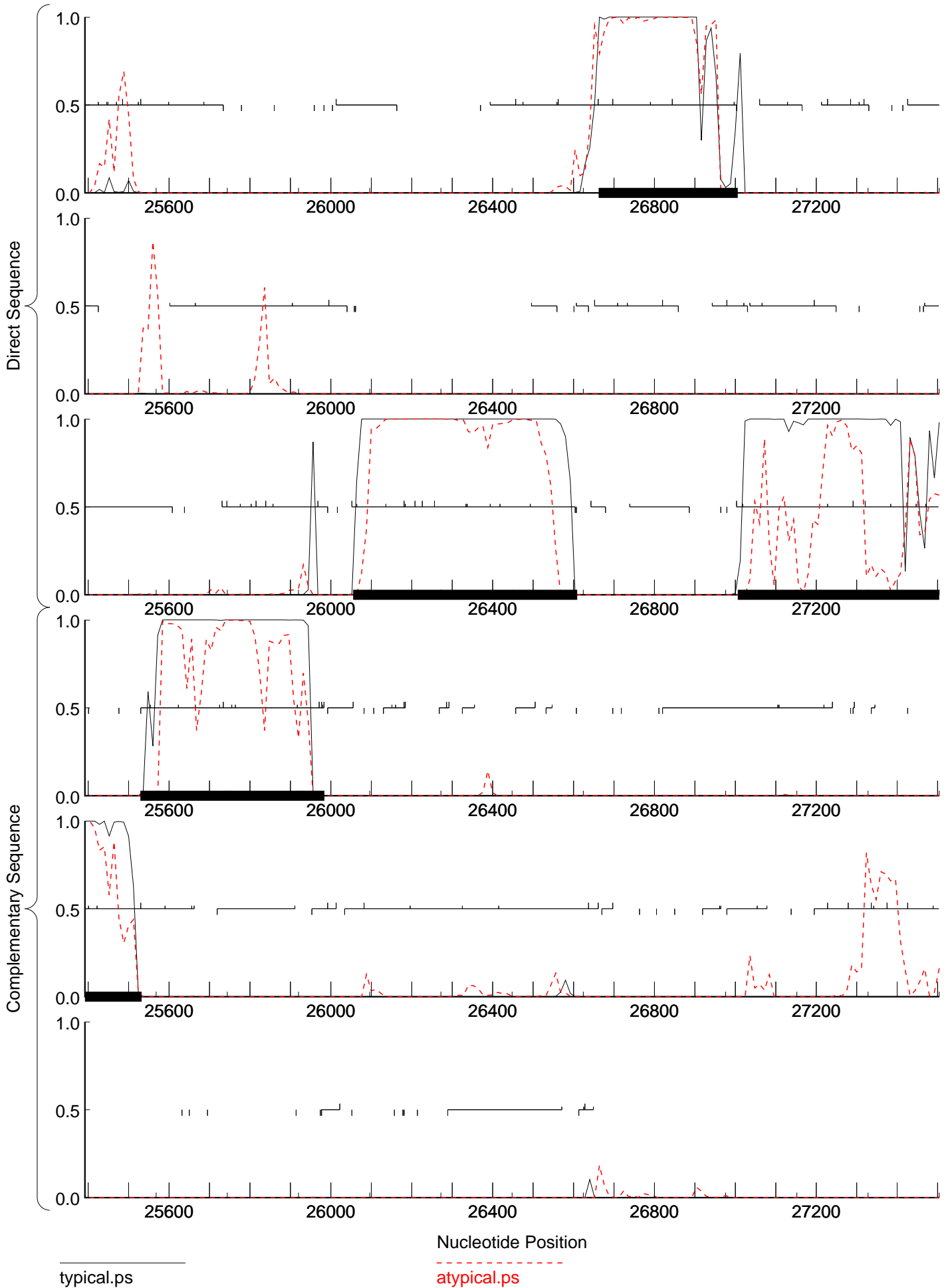
typical.ps

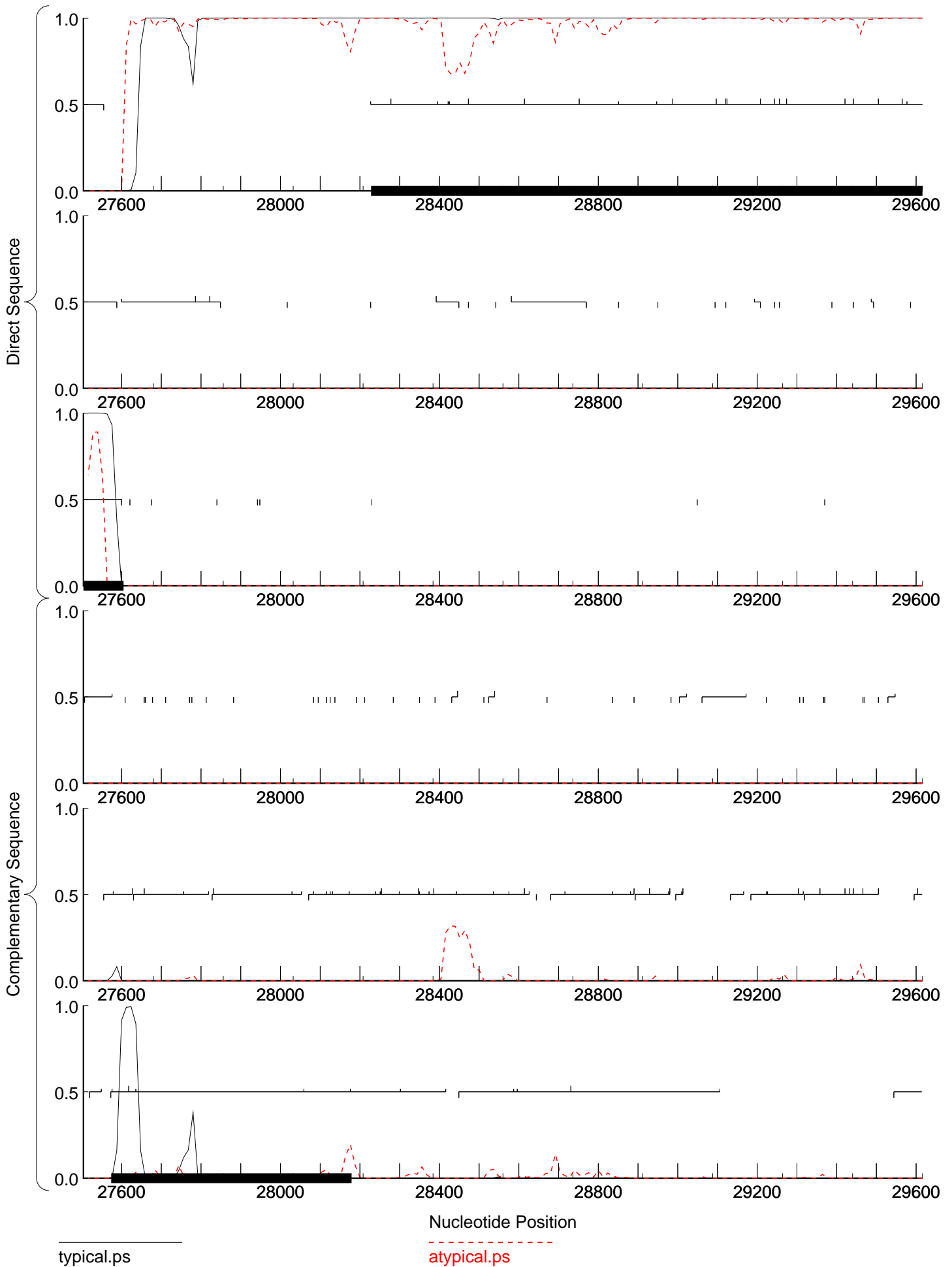
atypical.ps





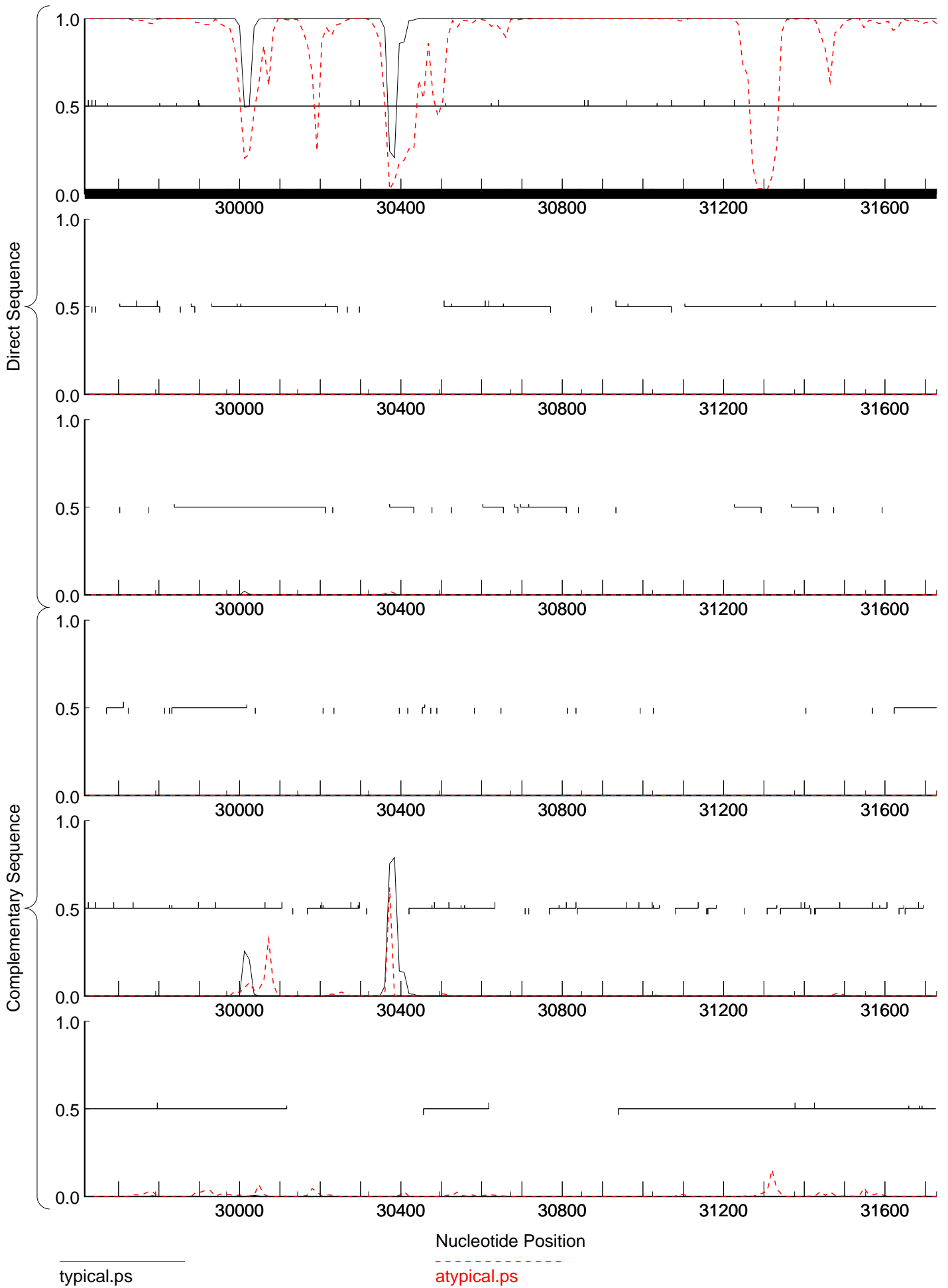


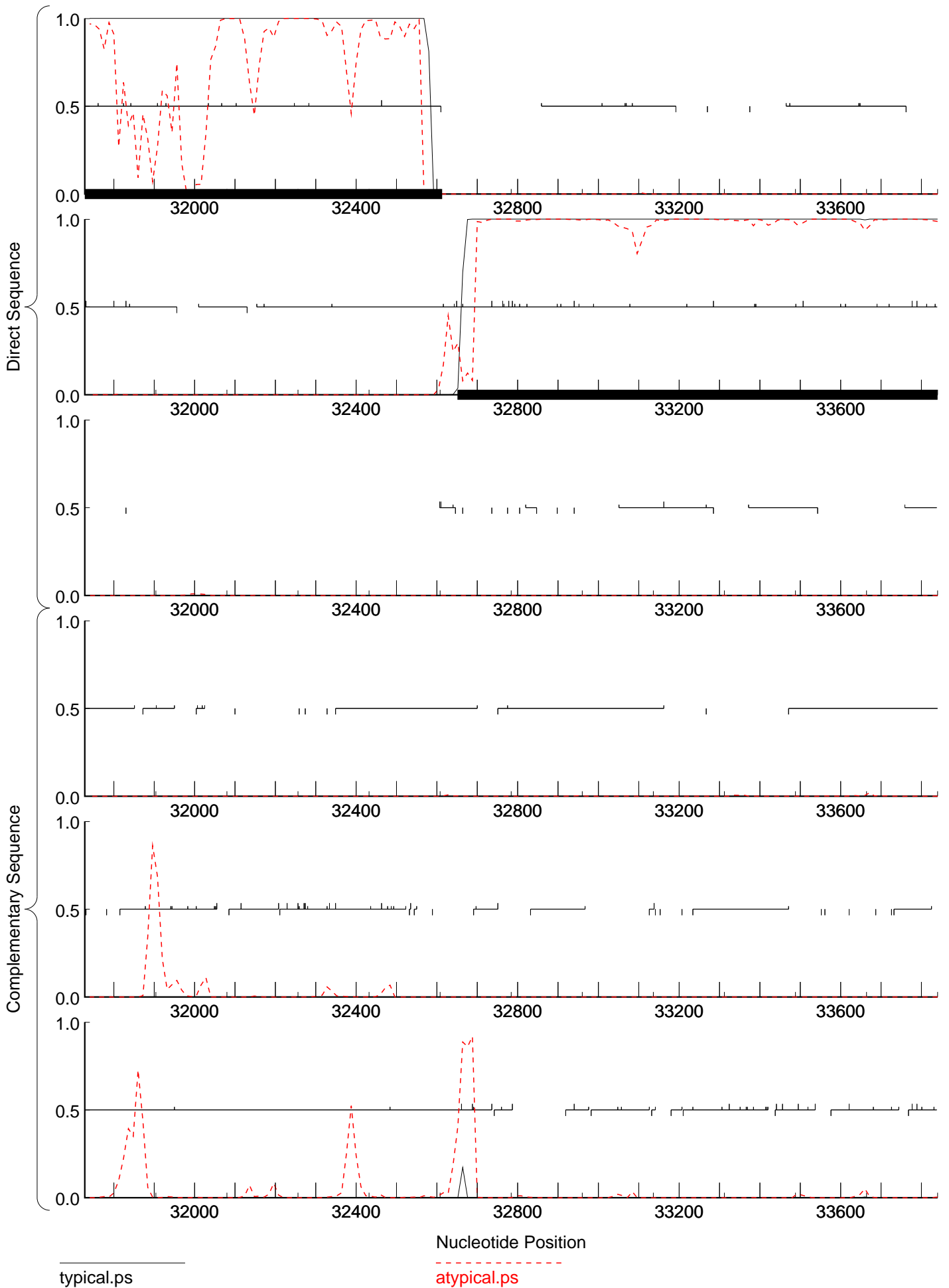


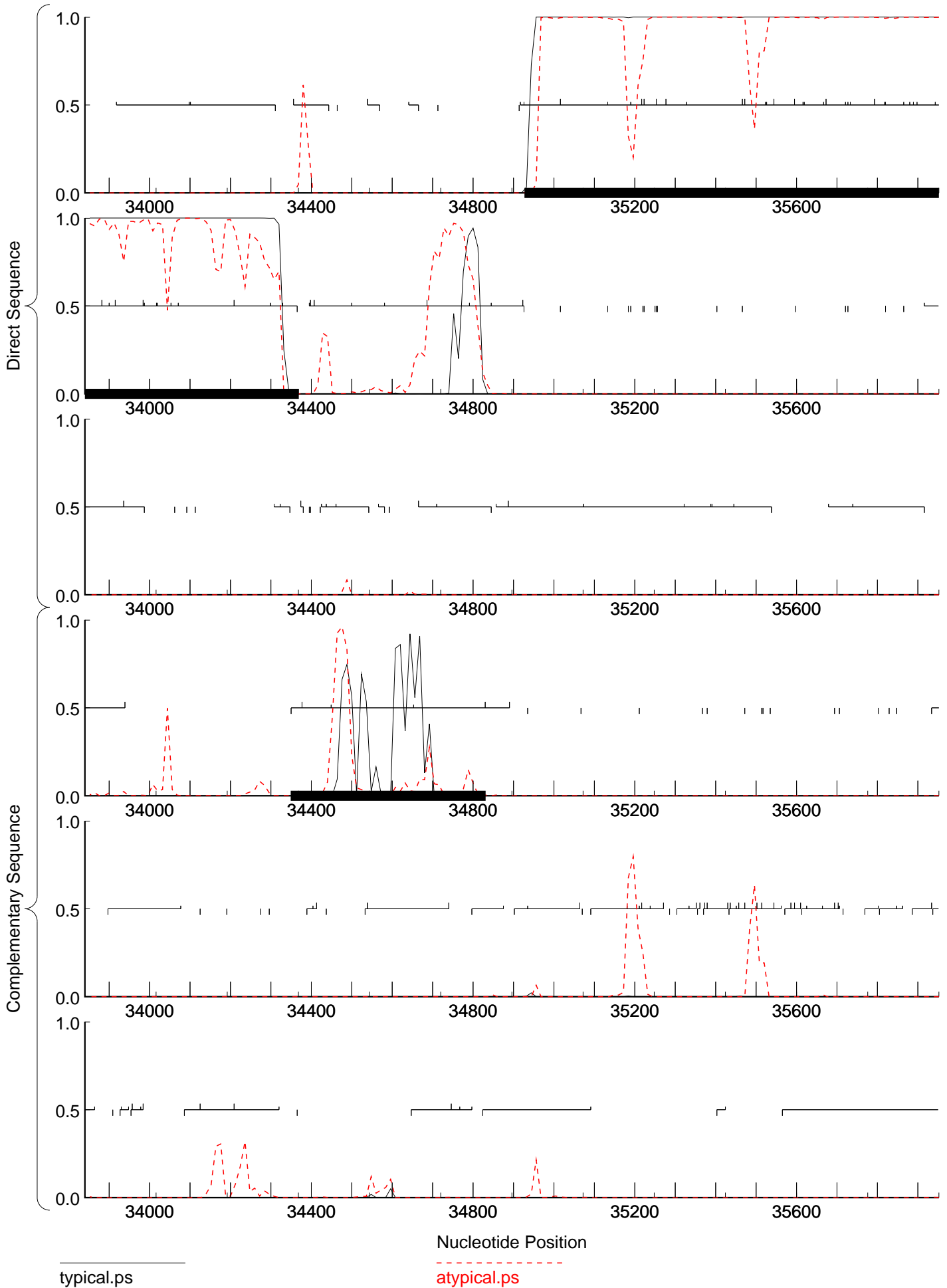


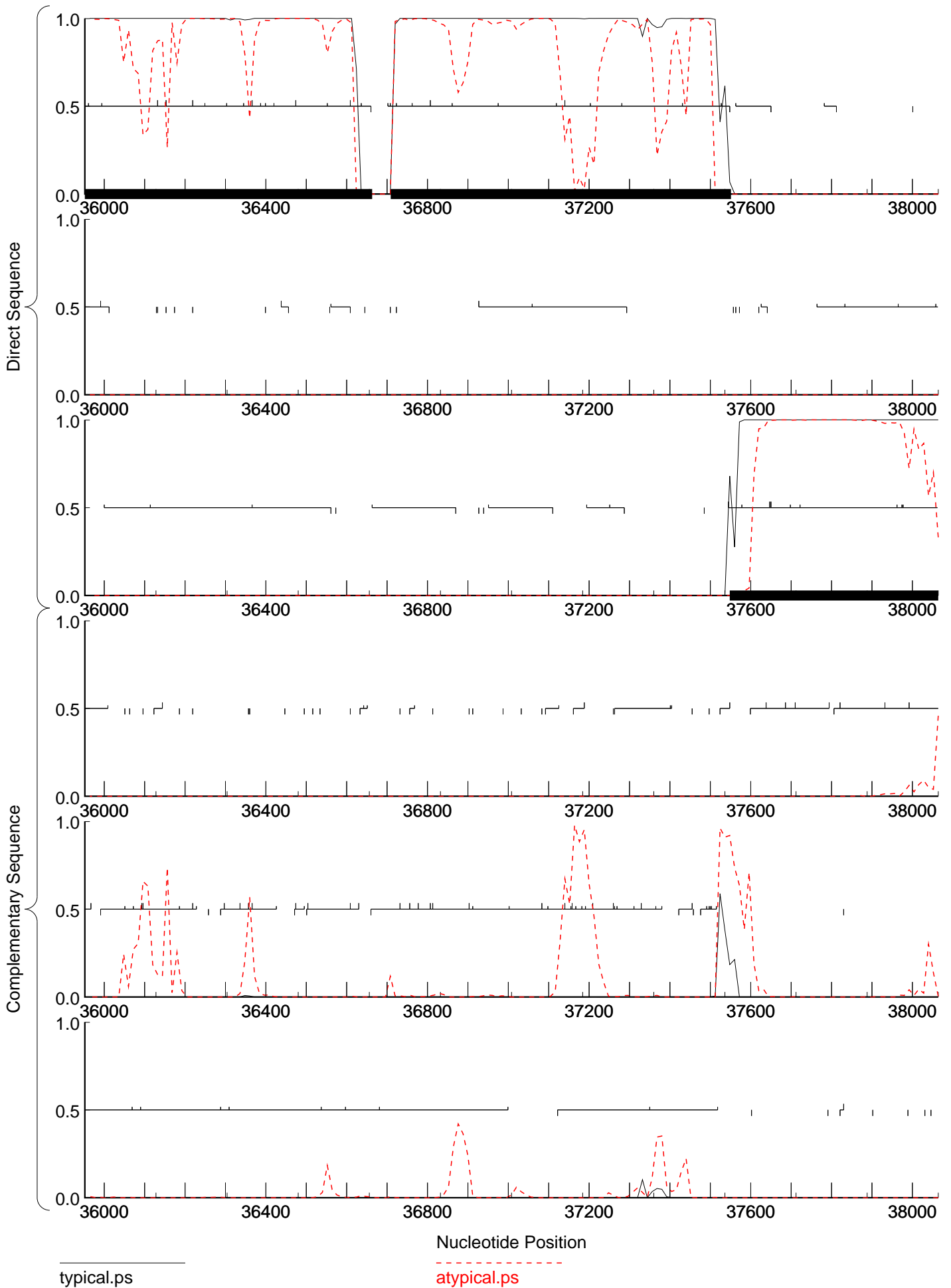
typical.ps

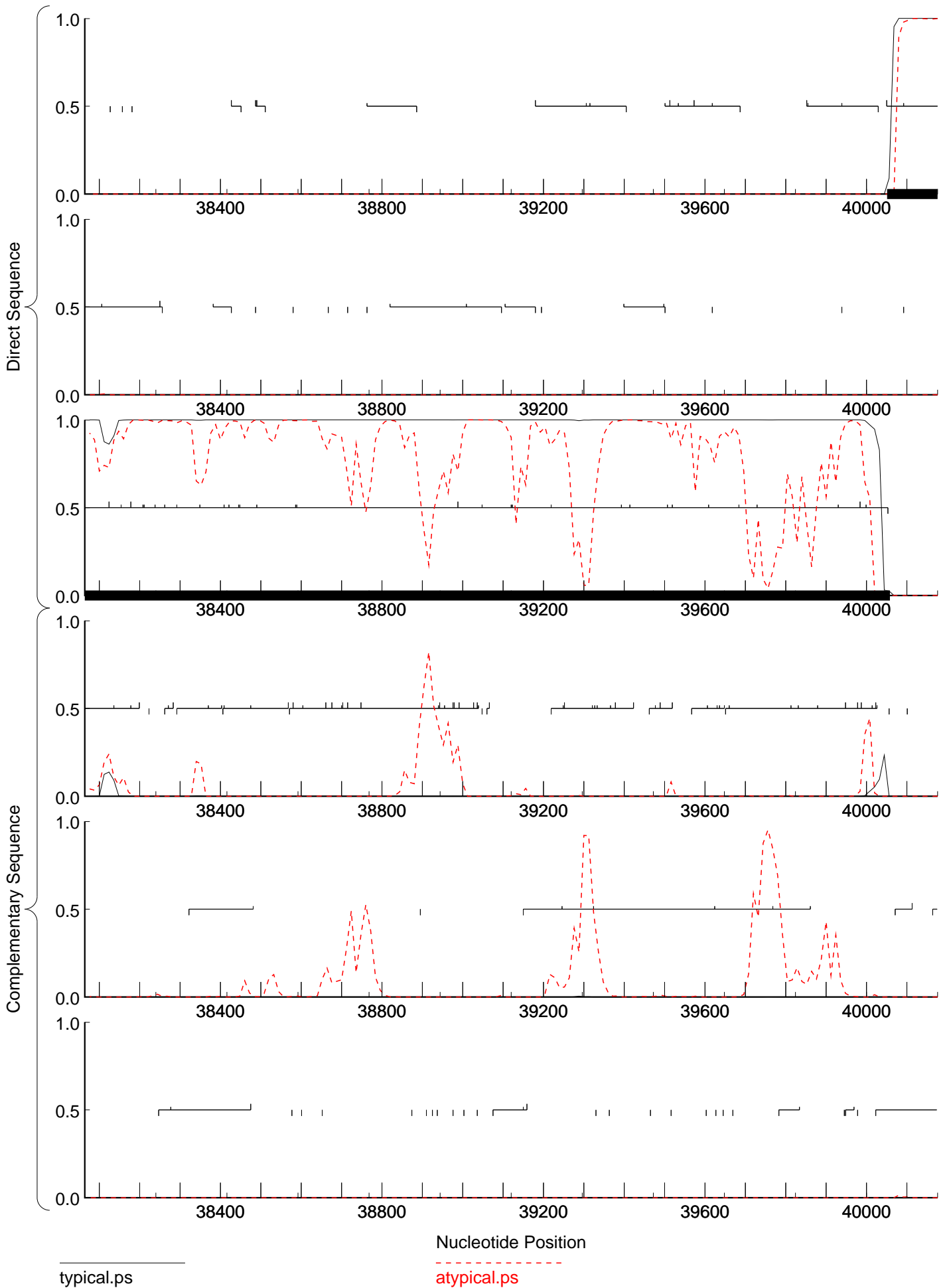
atypical.ps

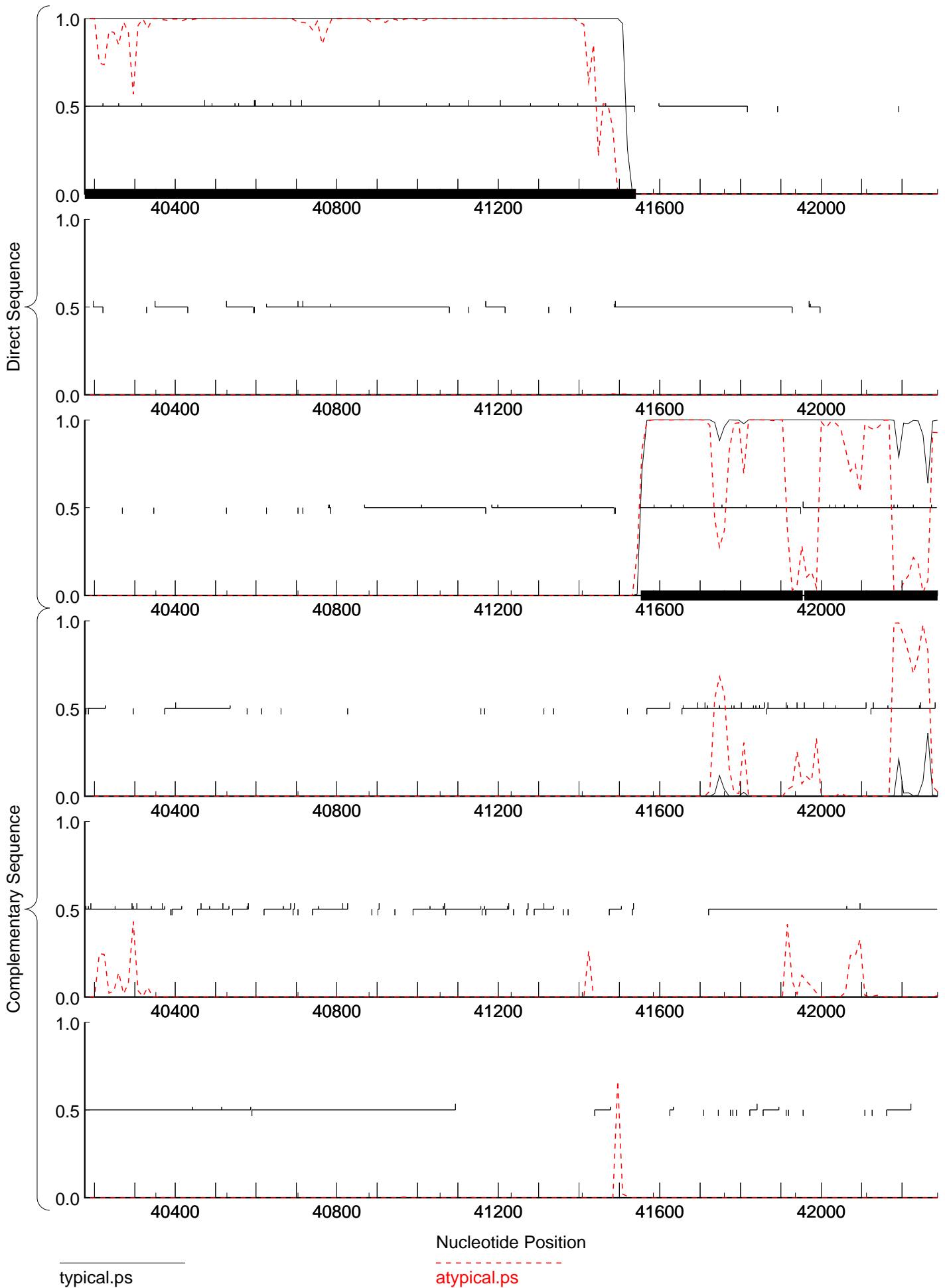


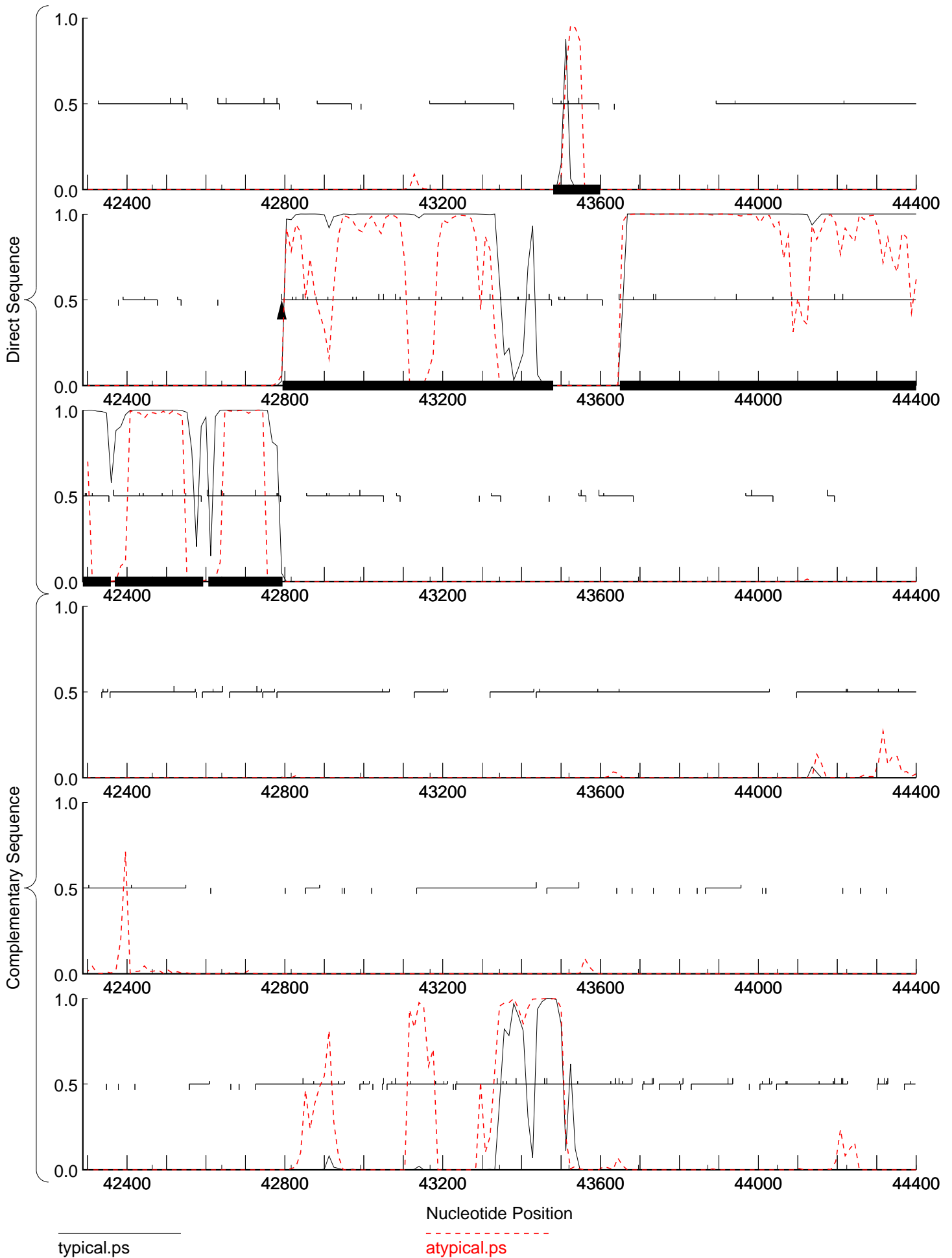


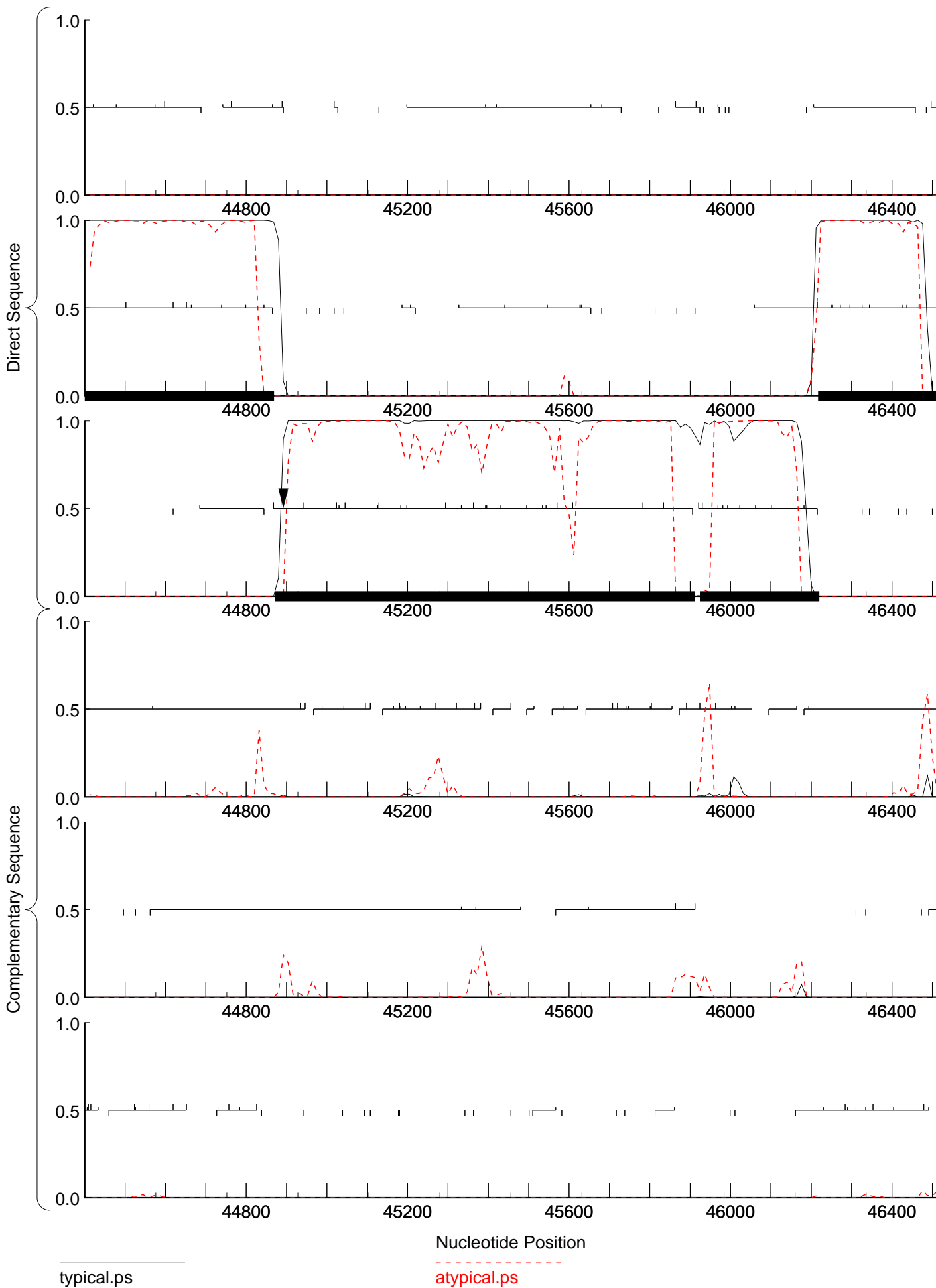


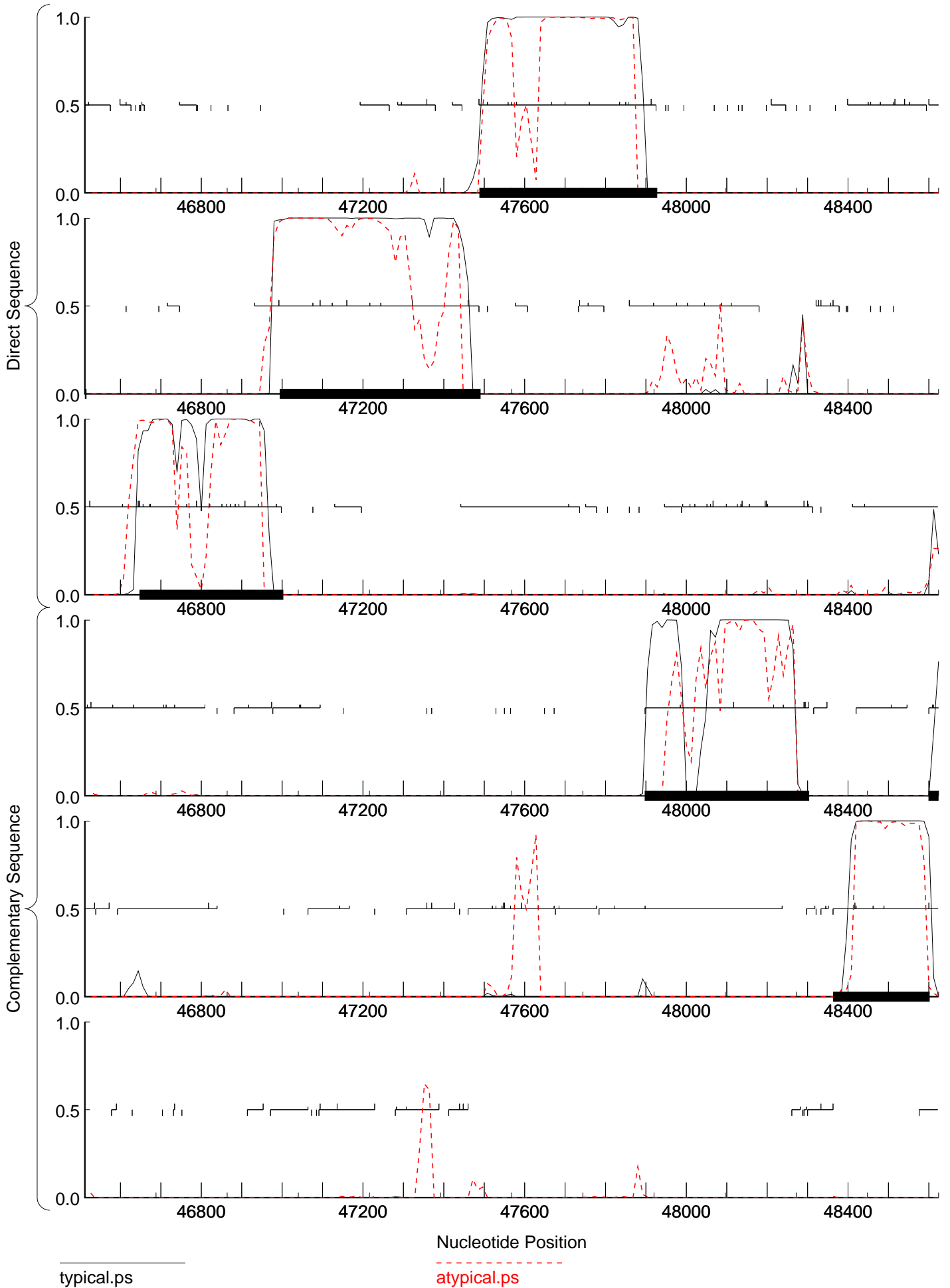


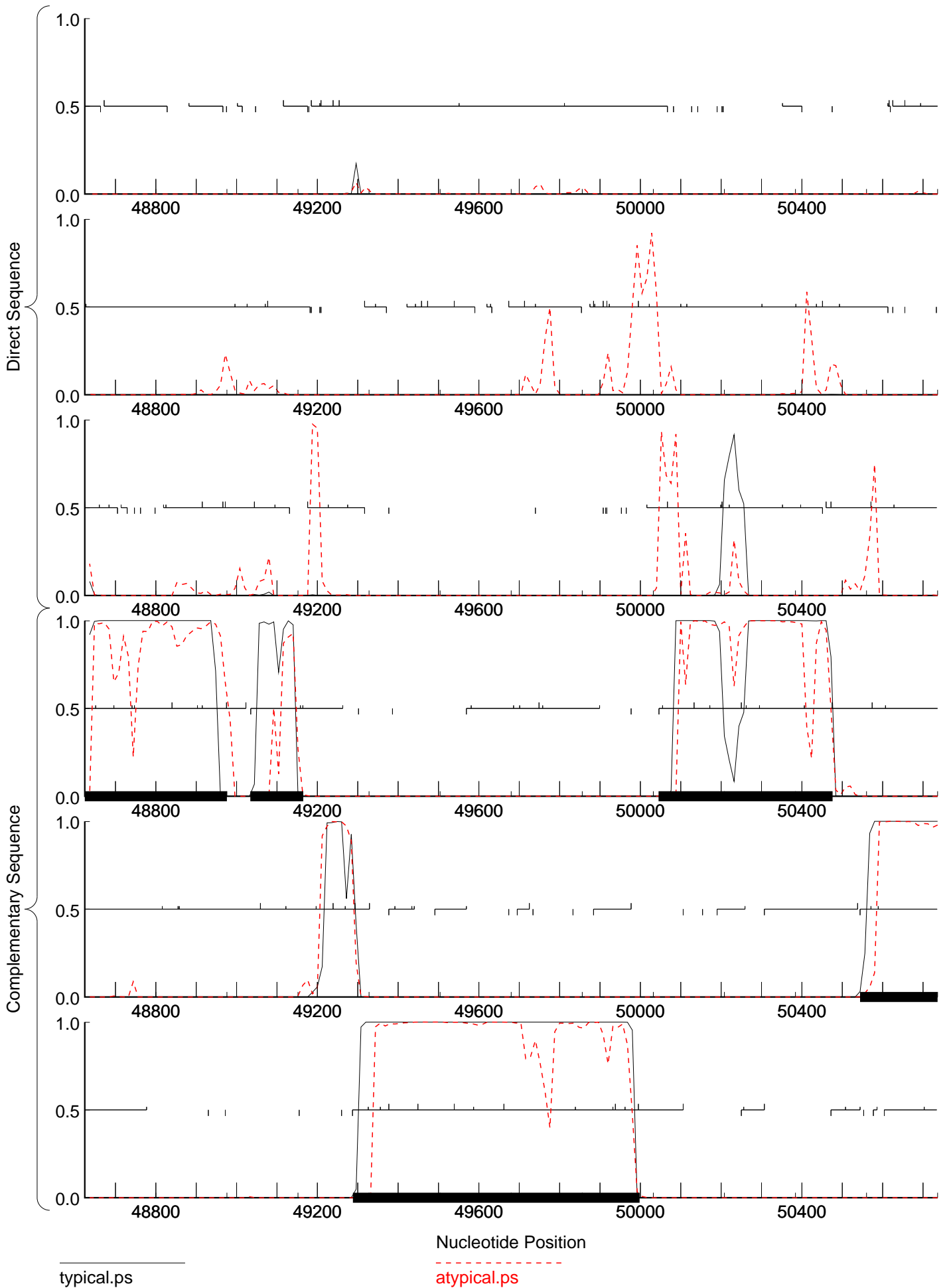






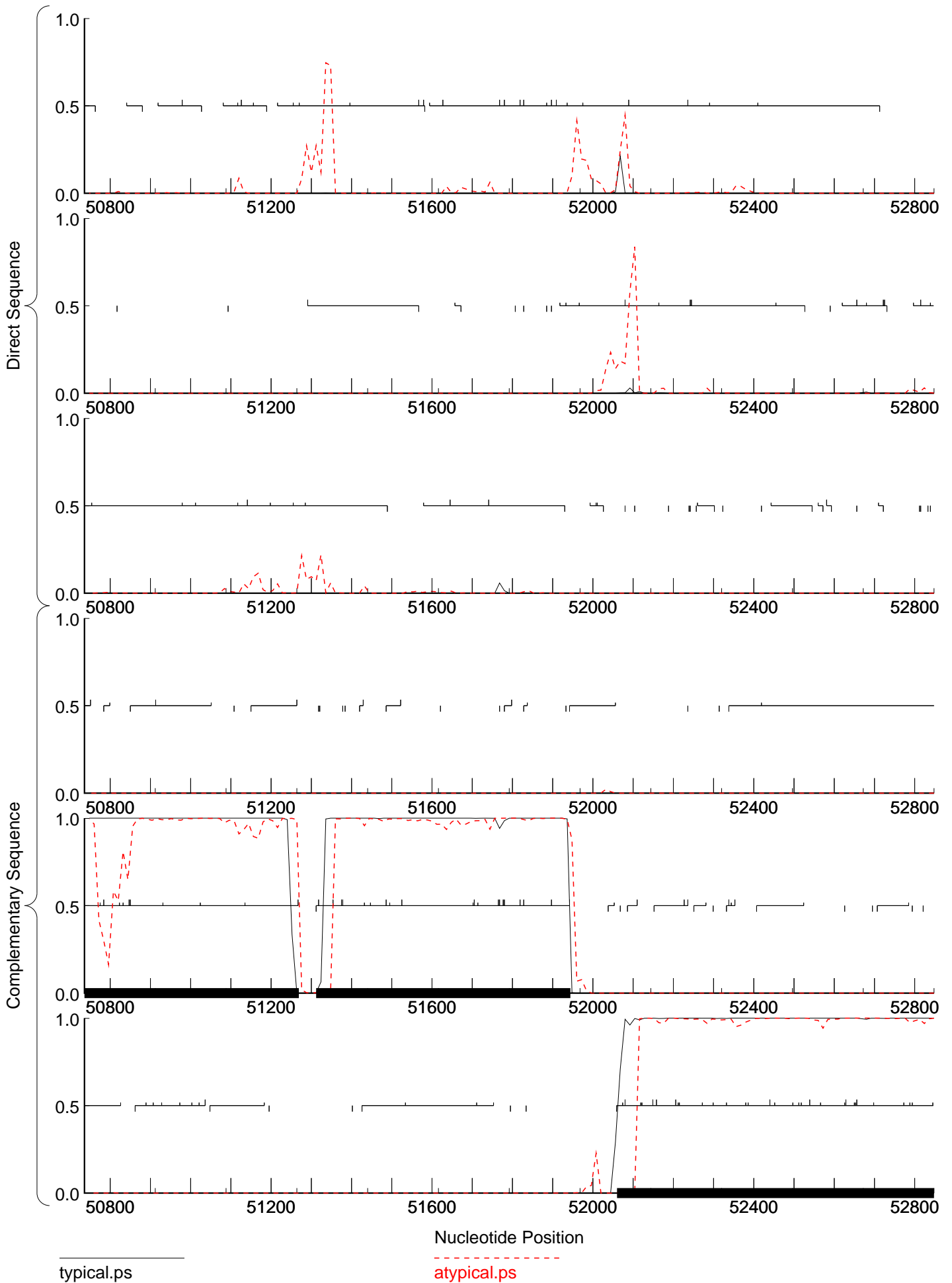






typical.ps

atypical.ps



typical.ps

atypical.ps

