

GeneMark

Version 2.5p (09.08.06)

Copyright 1993 - M. Borodovsky, J. McIninch

PROGRAM INFORMATION

Sequence : Mycobacterium phage Zulu complete sequence, 52499 bp including 10-base 3' overhang (CGGTCCG
Analysis Date : 6/19/18 at 0:55:05
Pages : 26
Sequence Length : 52499 bp
GC Content : 61.42%

Window Length : 96 bp
Window Step : 12 bp
Threshold Value : 0.500

PS-Version : 1.2

GeneMark Options : PostScript graph,
Mark ORFs / splice sites,
List ORFs,
List regions and/or splice sites,

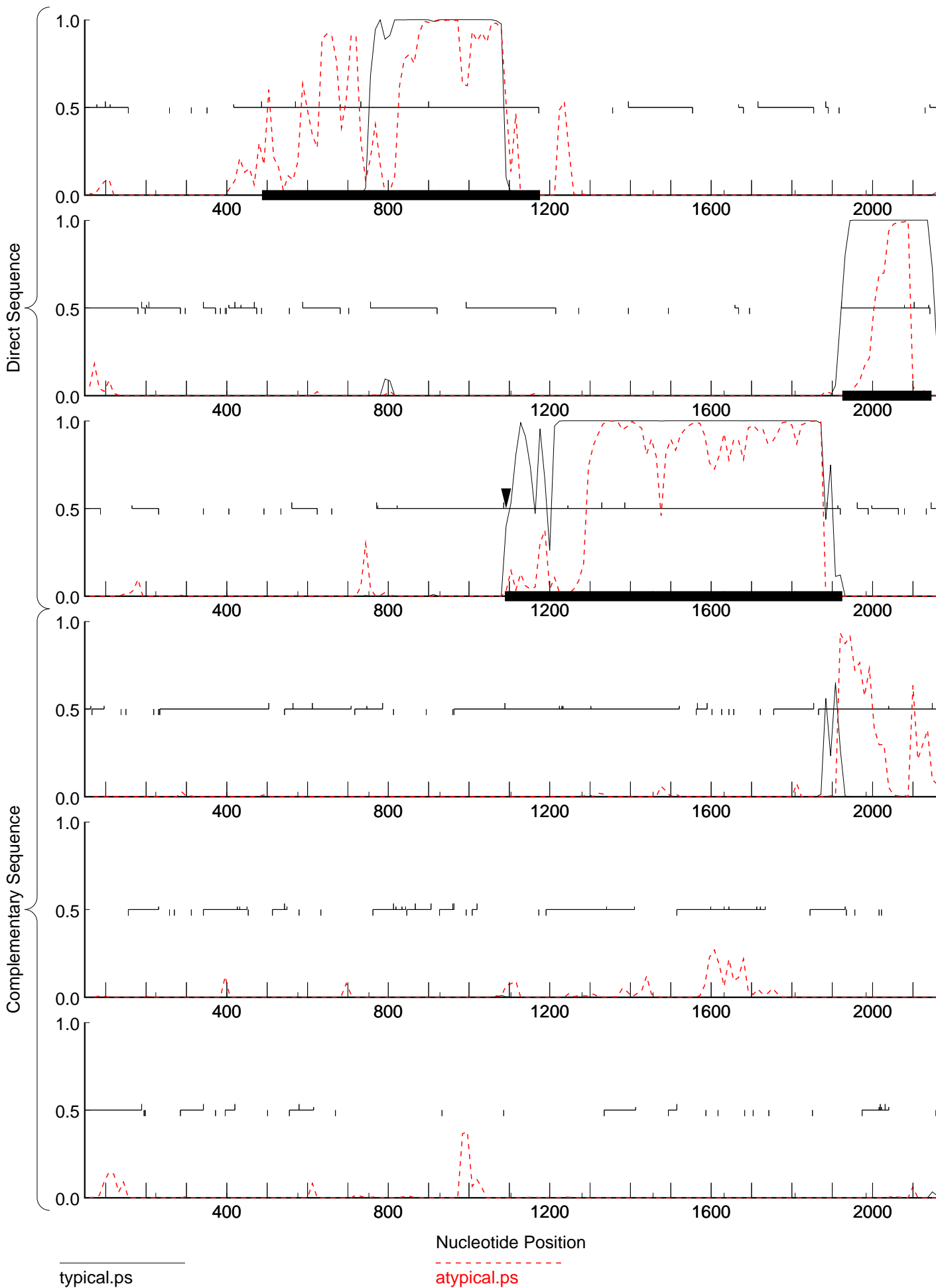
MATRIX INFORMATION

Matrix : -
Author : -
Order : 4

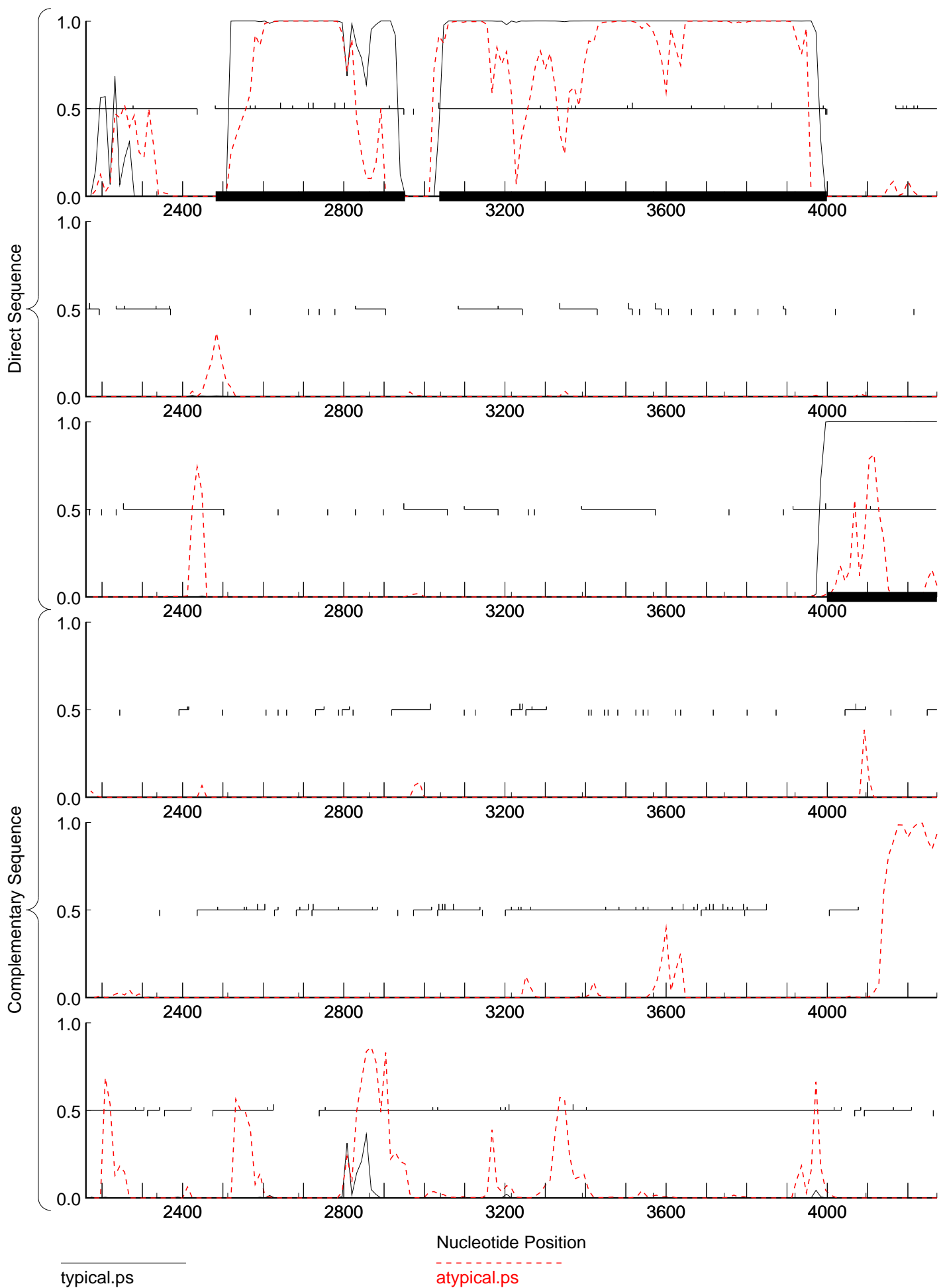
Send questions / comments to:
Dr. M. Borodovsky
Georgia Institute of Technology
School of Biology
Atlanta, GA 30332-0230

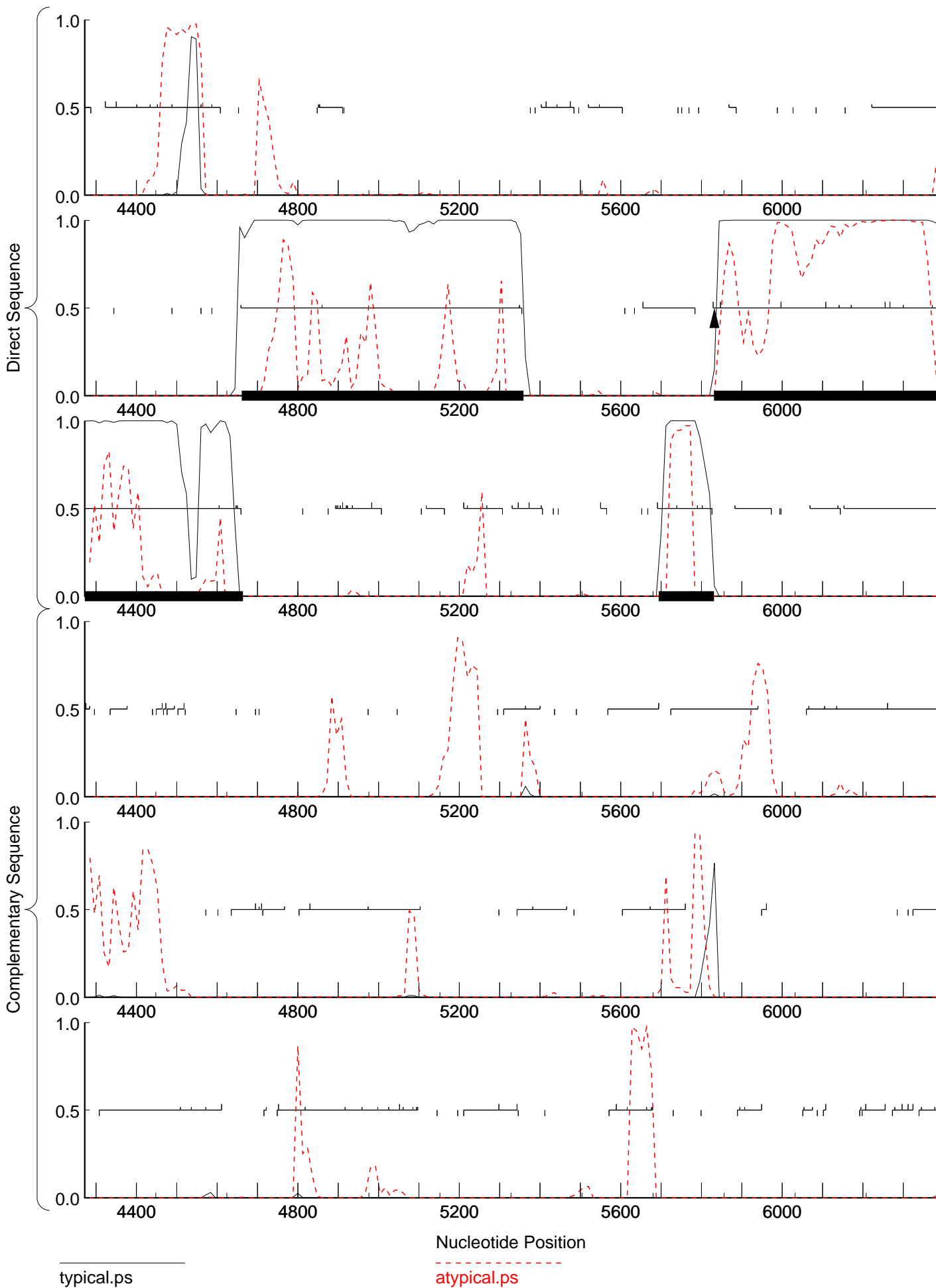
Matrix notes & comments

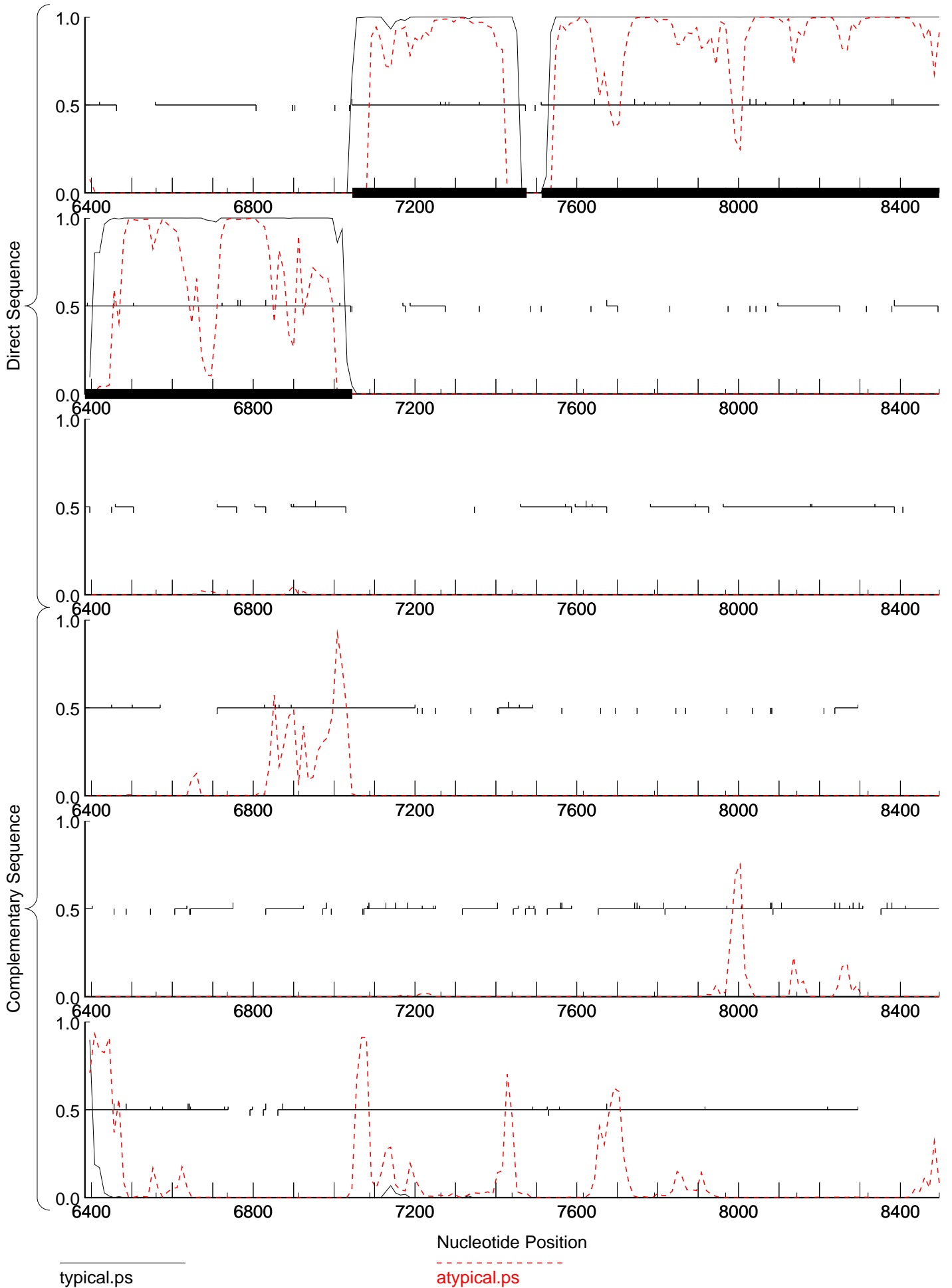
Training set derived by GeneMarkS, 4.30 October 2014
Tue Jun 19 00:55:05 2018

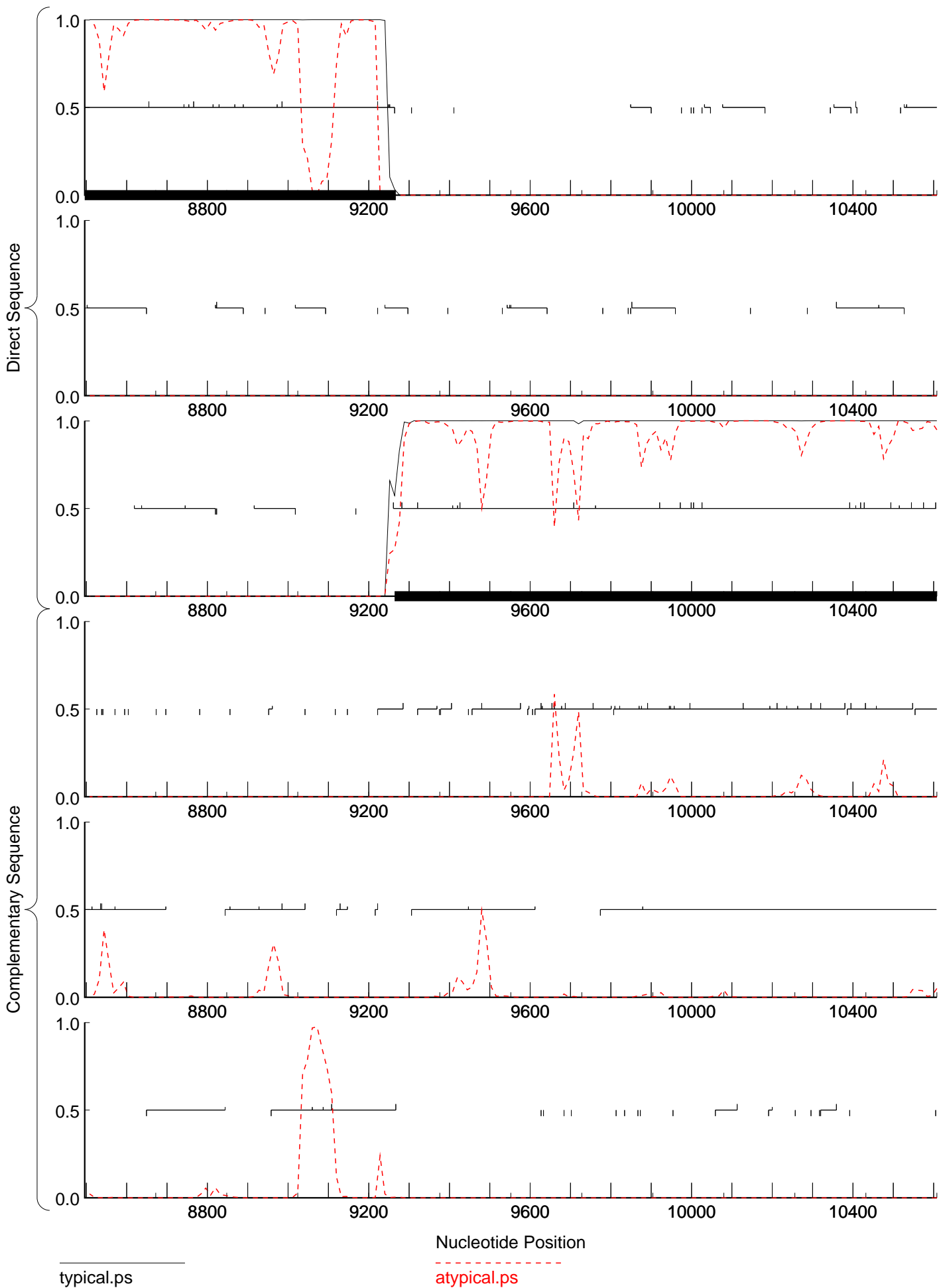


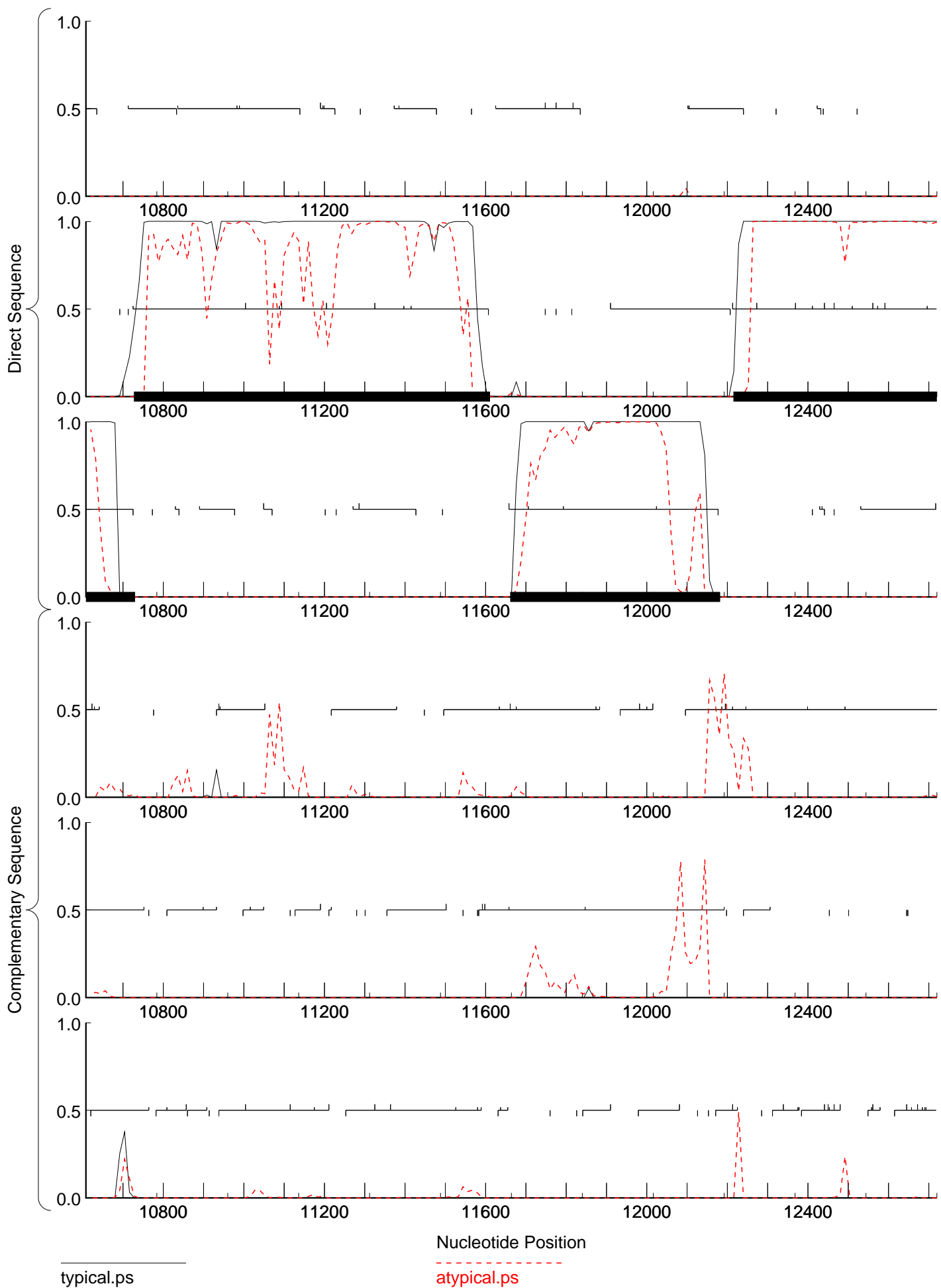
u complete sequence, 52499 bp including 10-base 3' overhang (CGGTCGGTAA), Cluster A6, Order 4, Window 96, Step 12, 3/26
u complete sequence, 52499 bp including 10-base 3' overhang (CGGTCGGTAA), Cluster A6, Order 2, Window 96, Step 12, 3/26

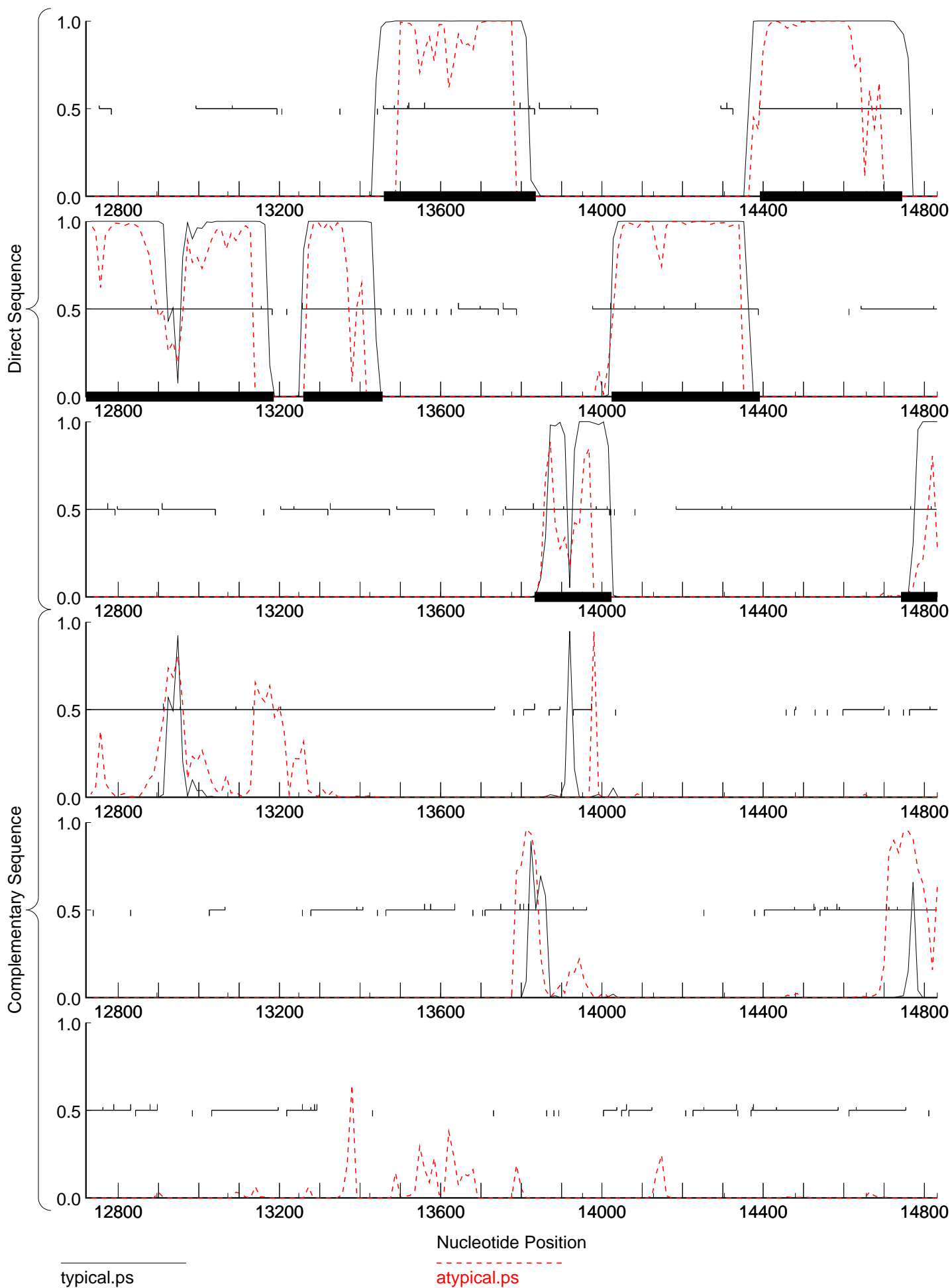


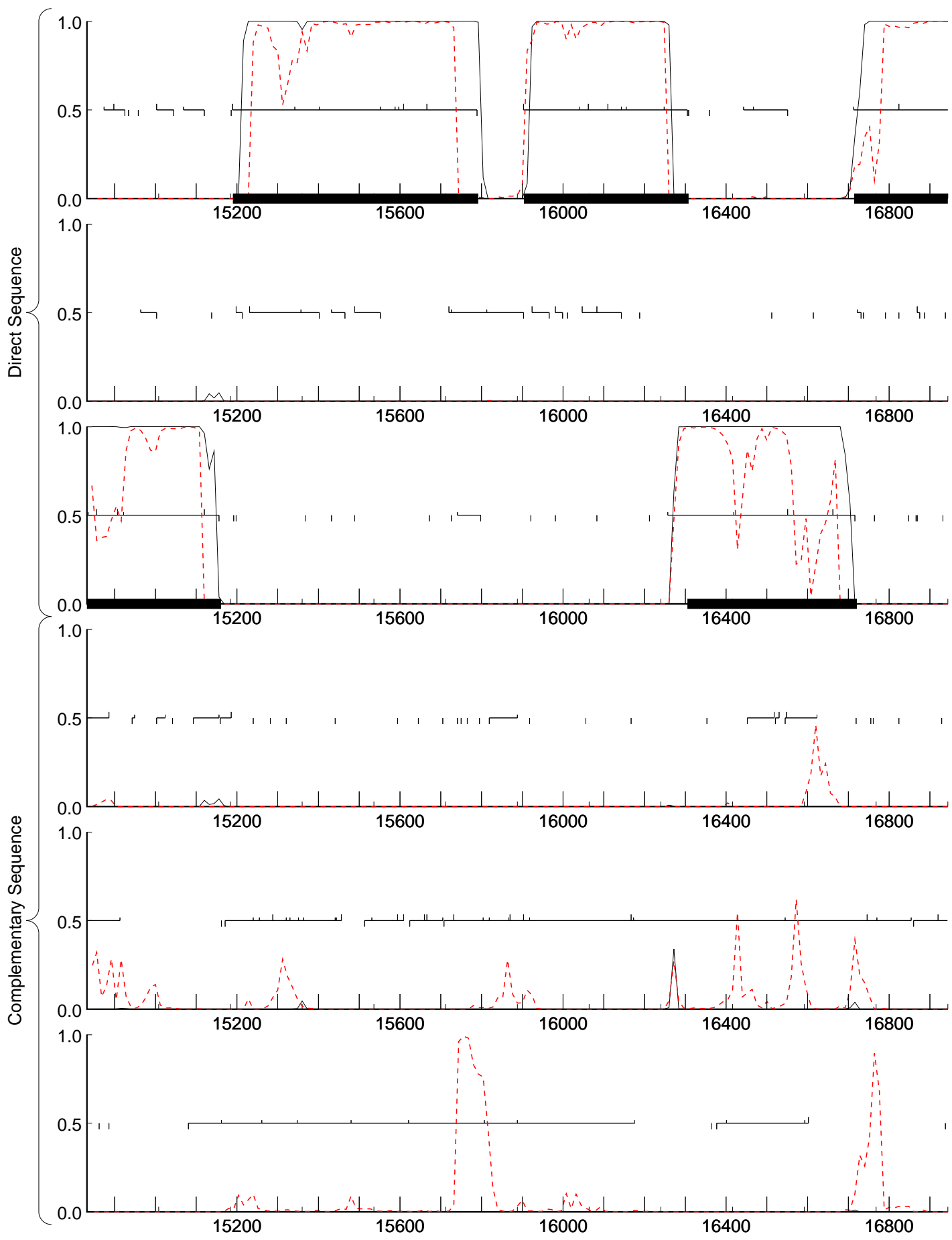






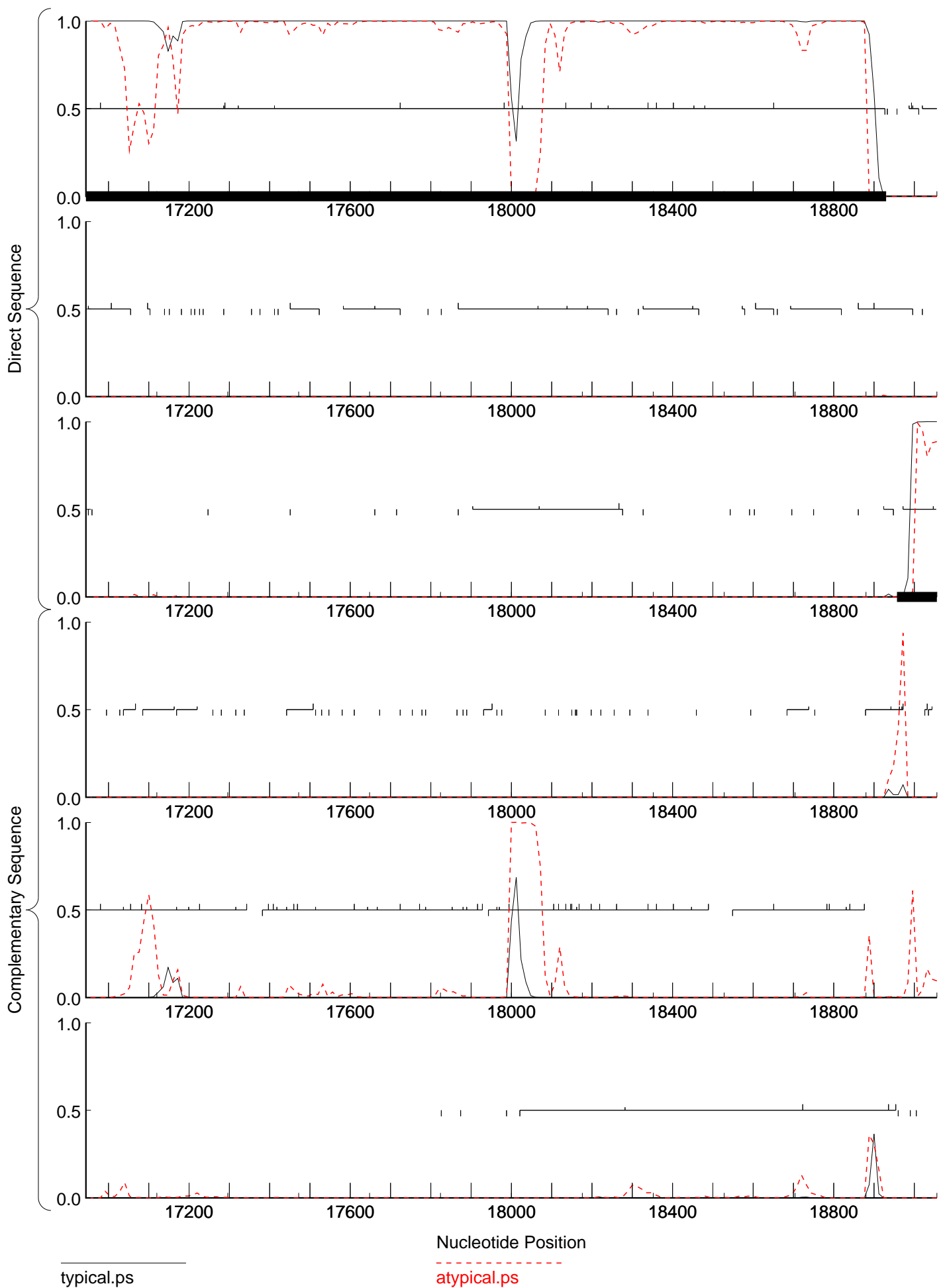






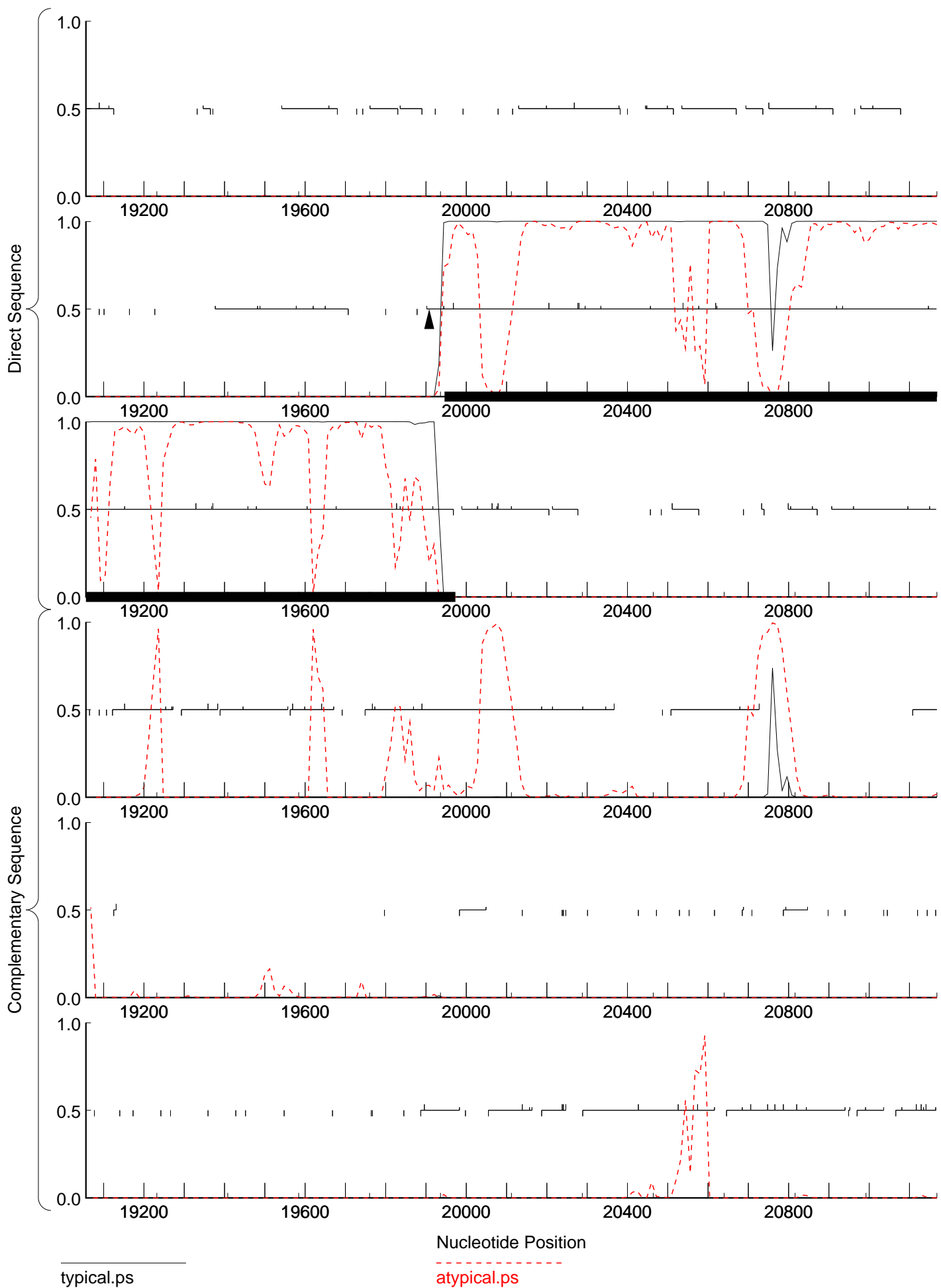
typical.ps

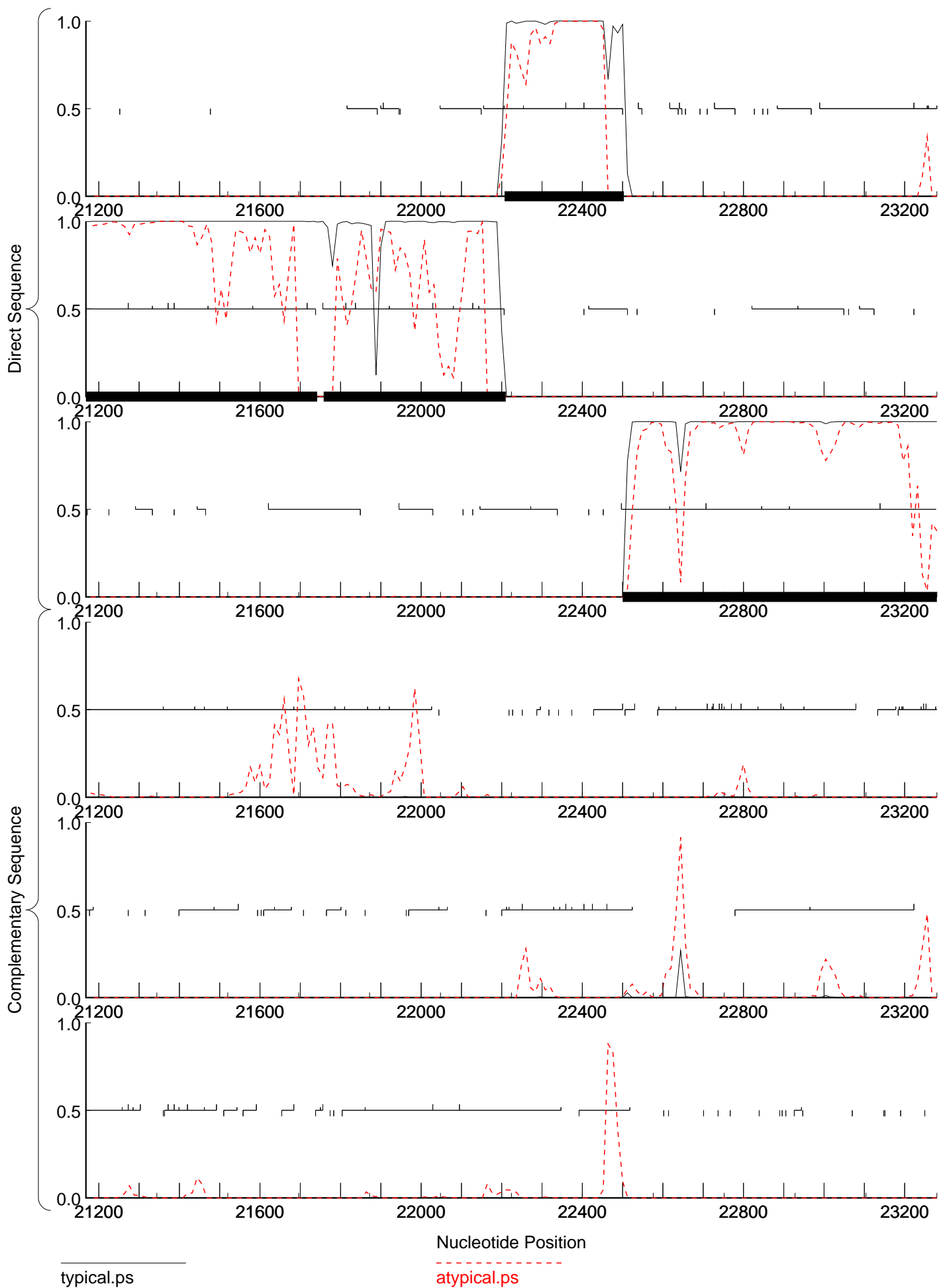
atypical.ps



typical.ps

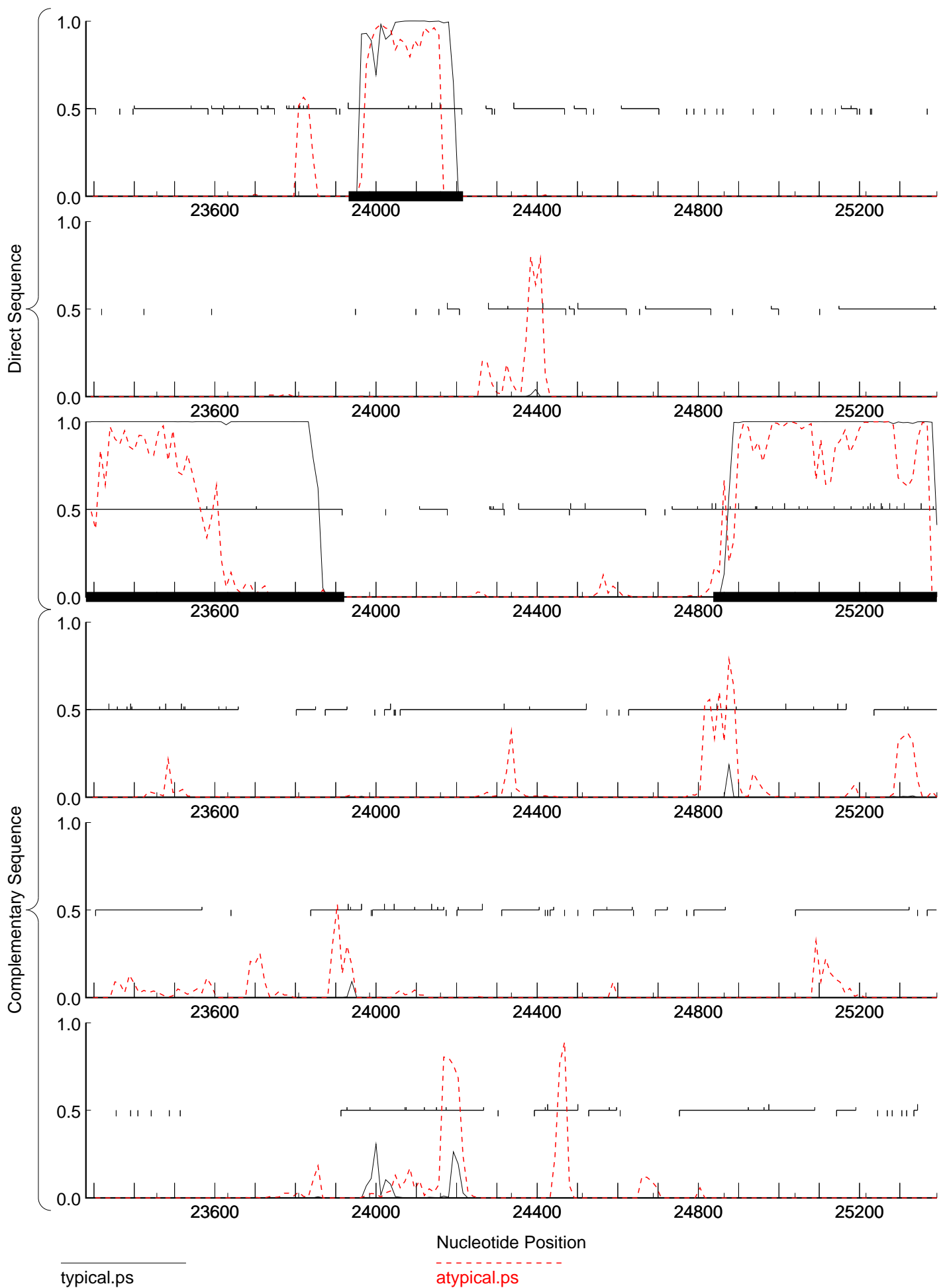
atypical.ps

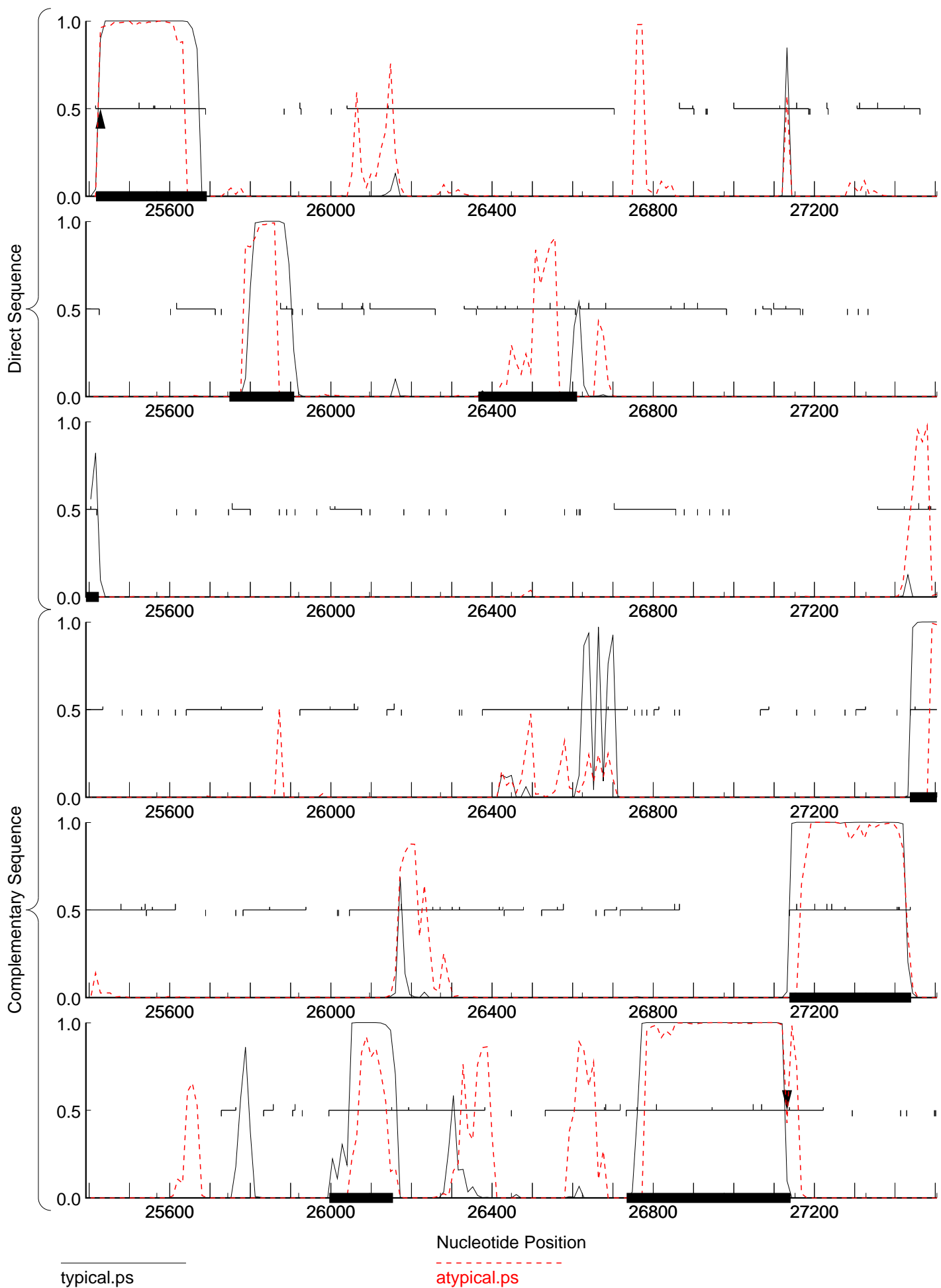




typical.ps

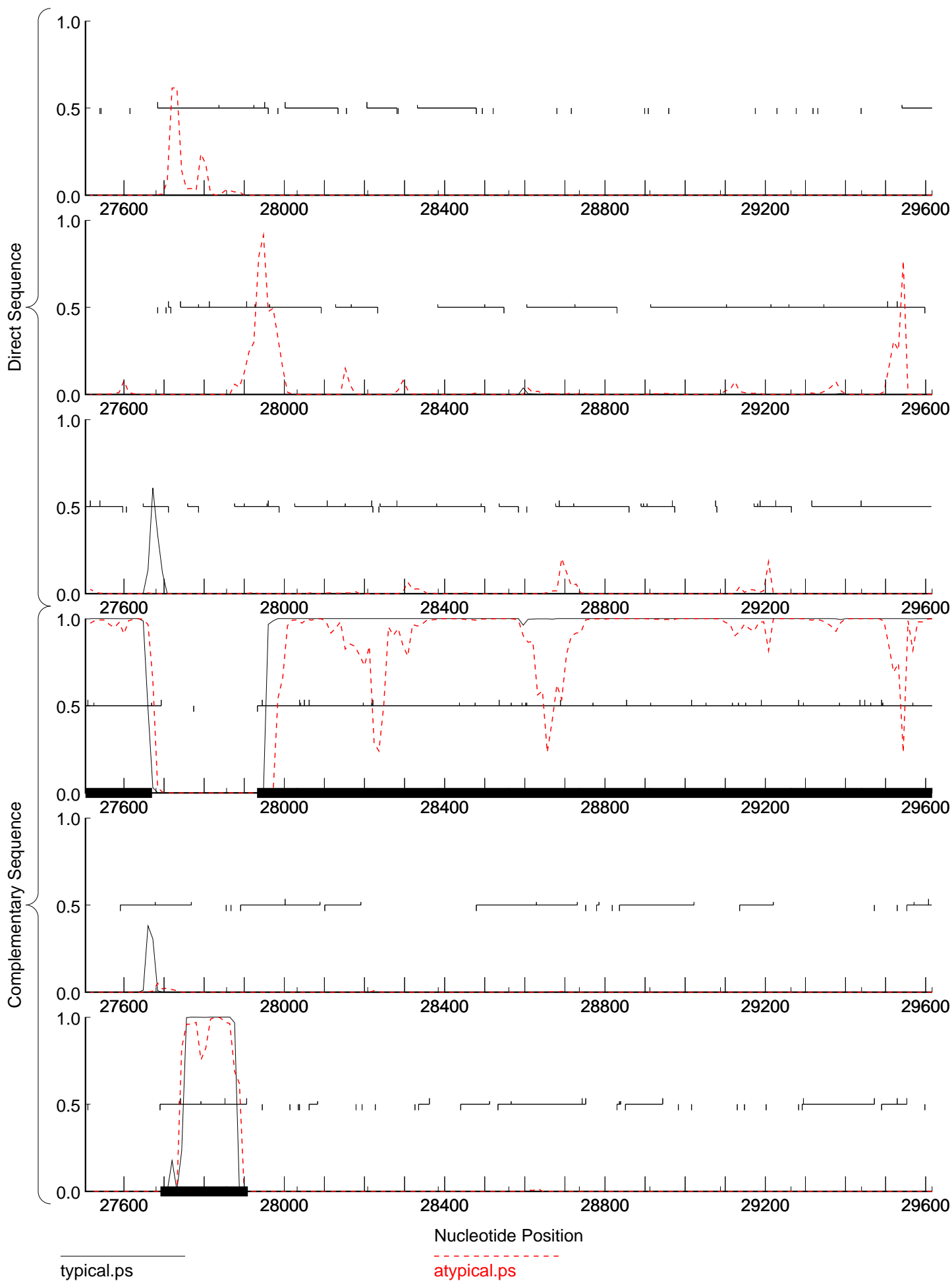
atypical.ps





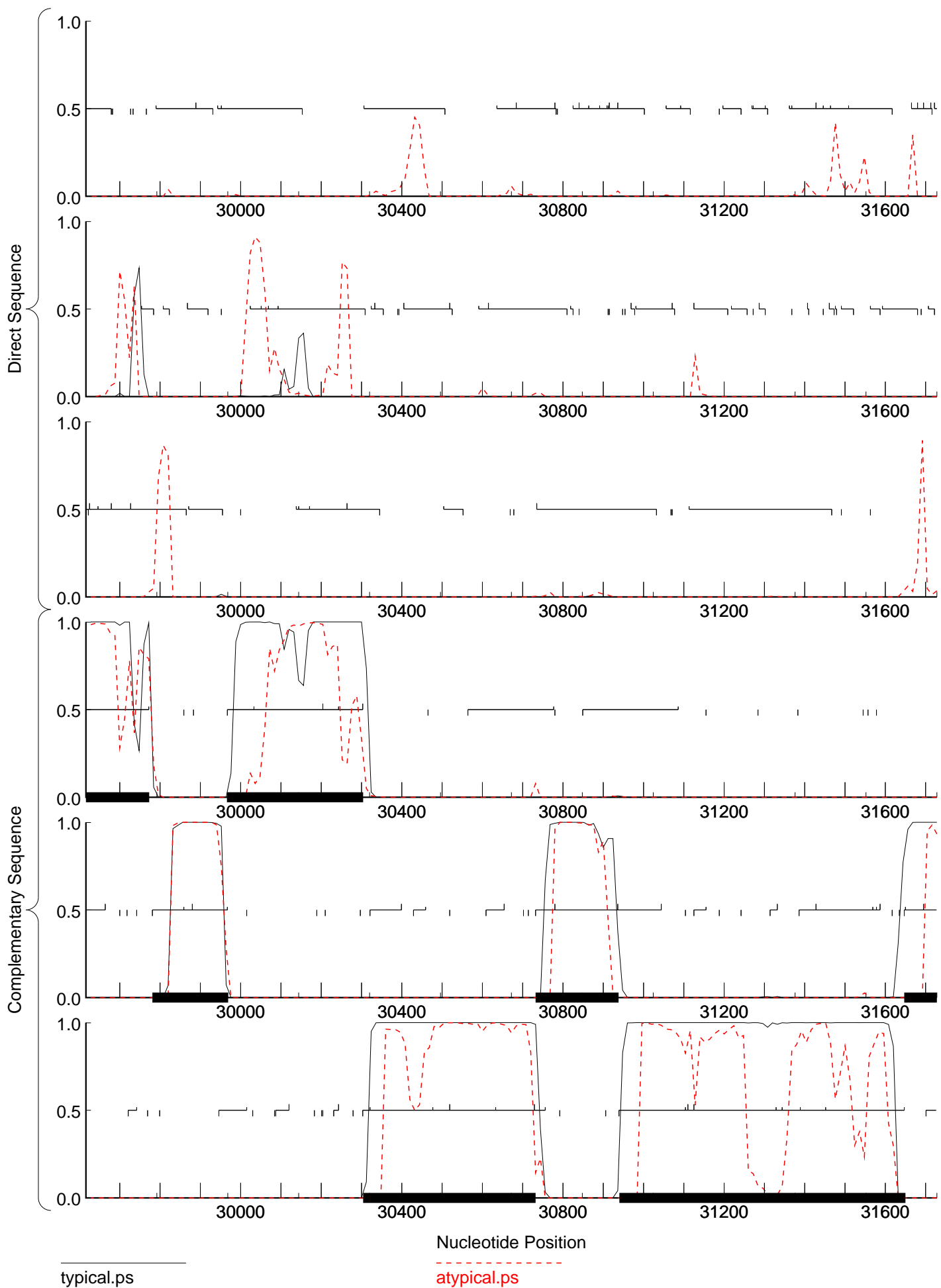
typical.ps

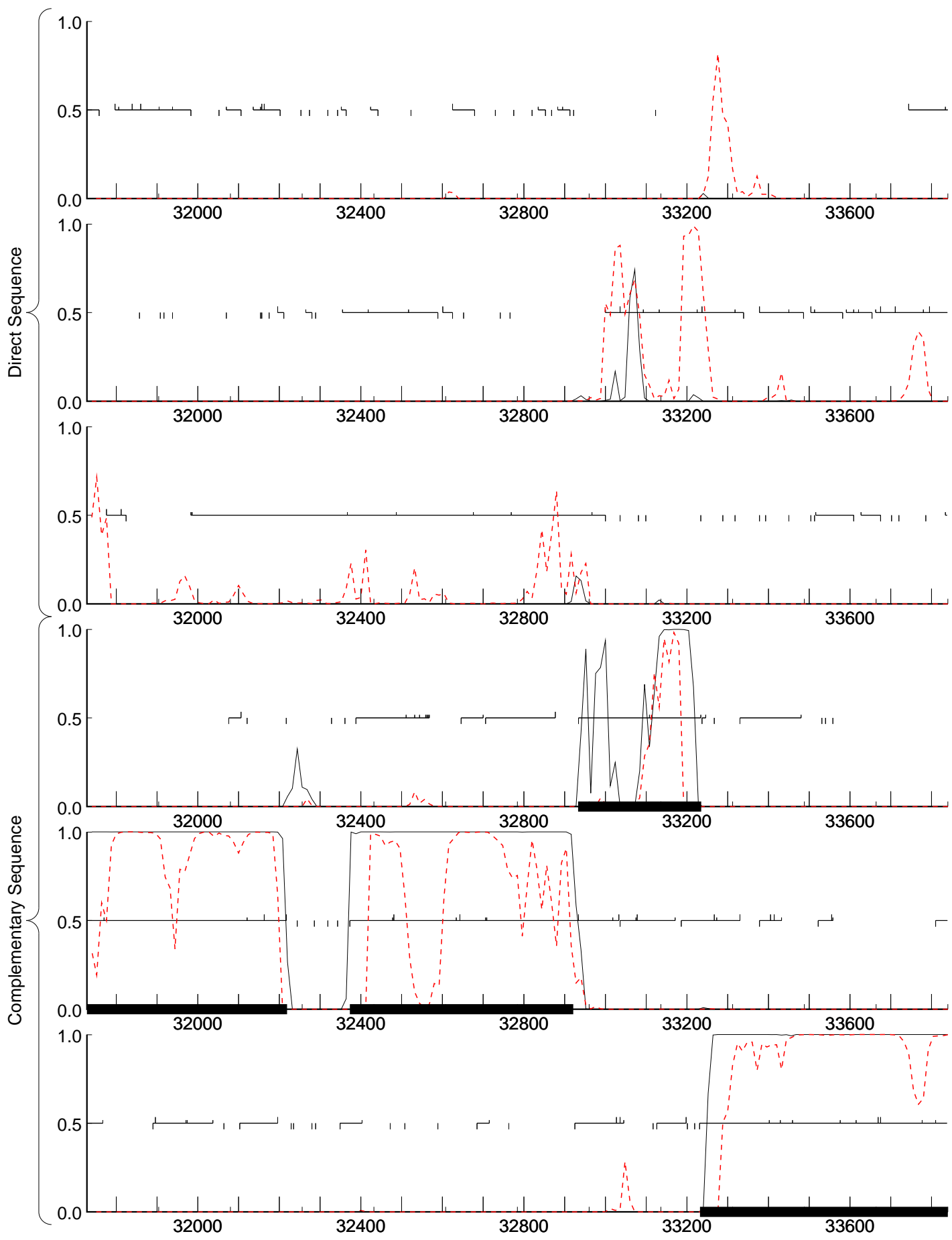
atypical.ps



typical.ps

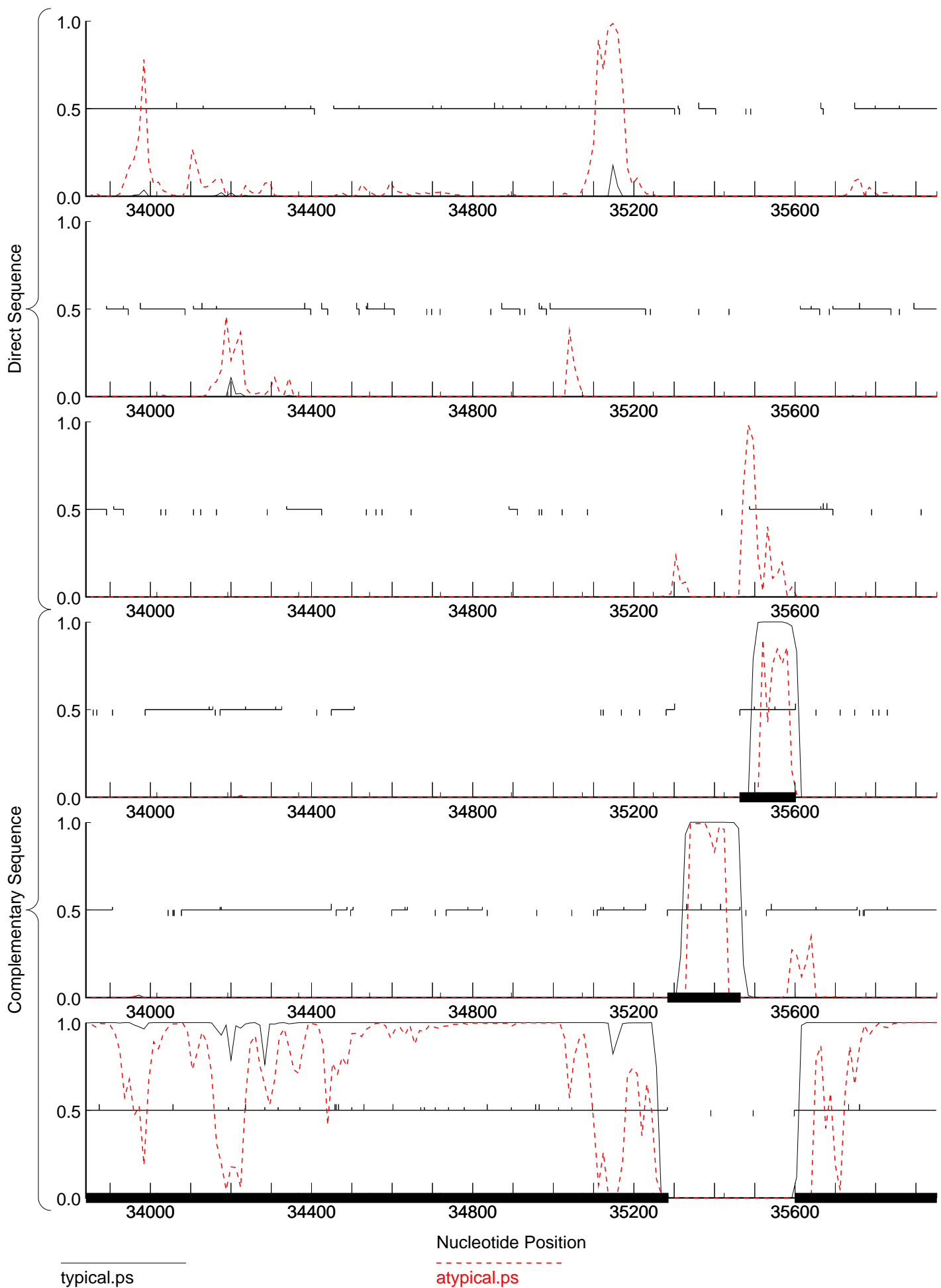
atypical.ps

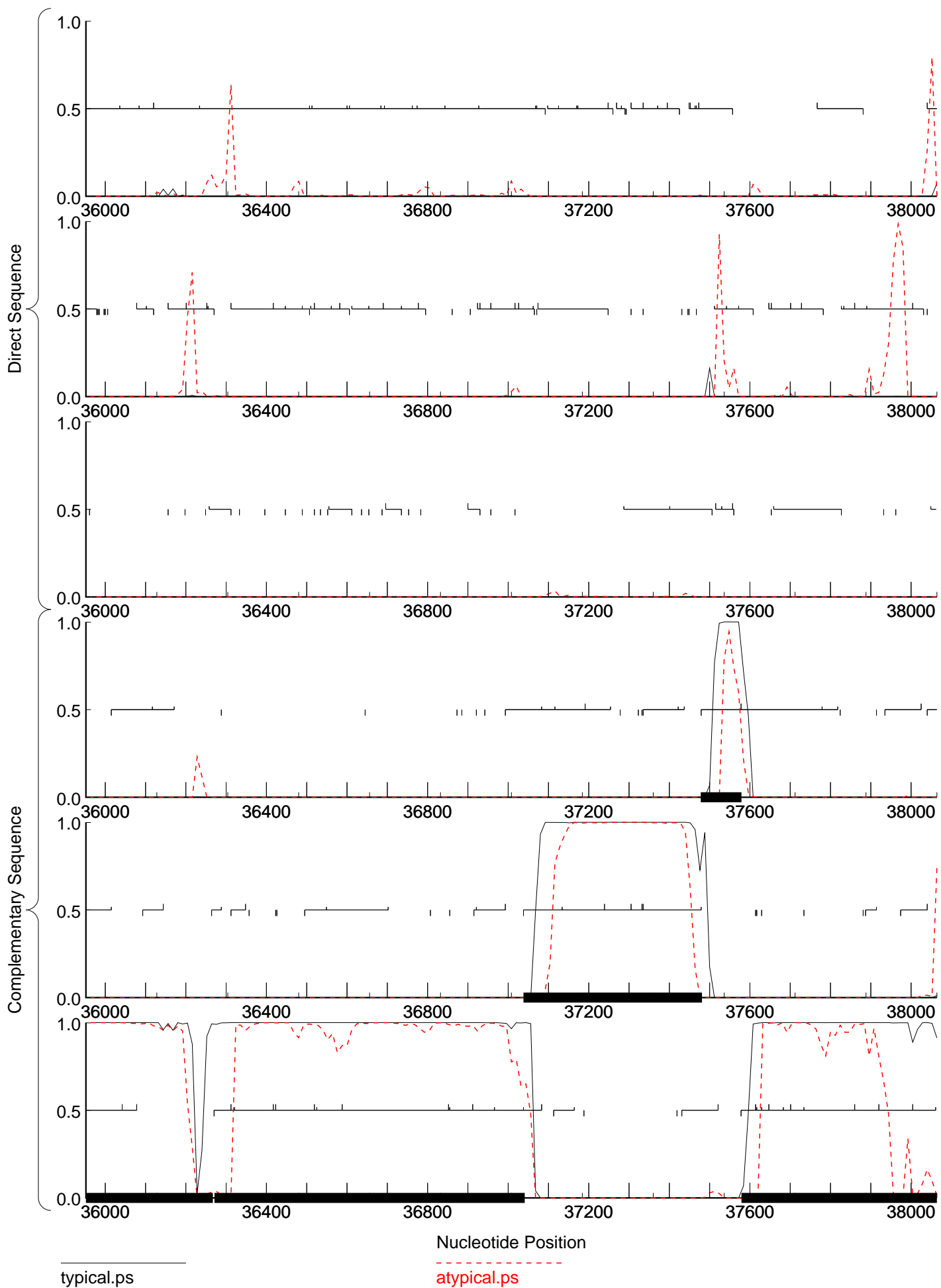




typical.ps

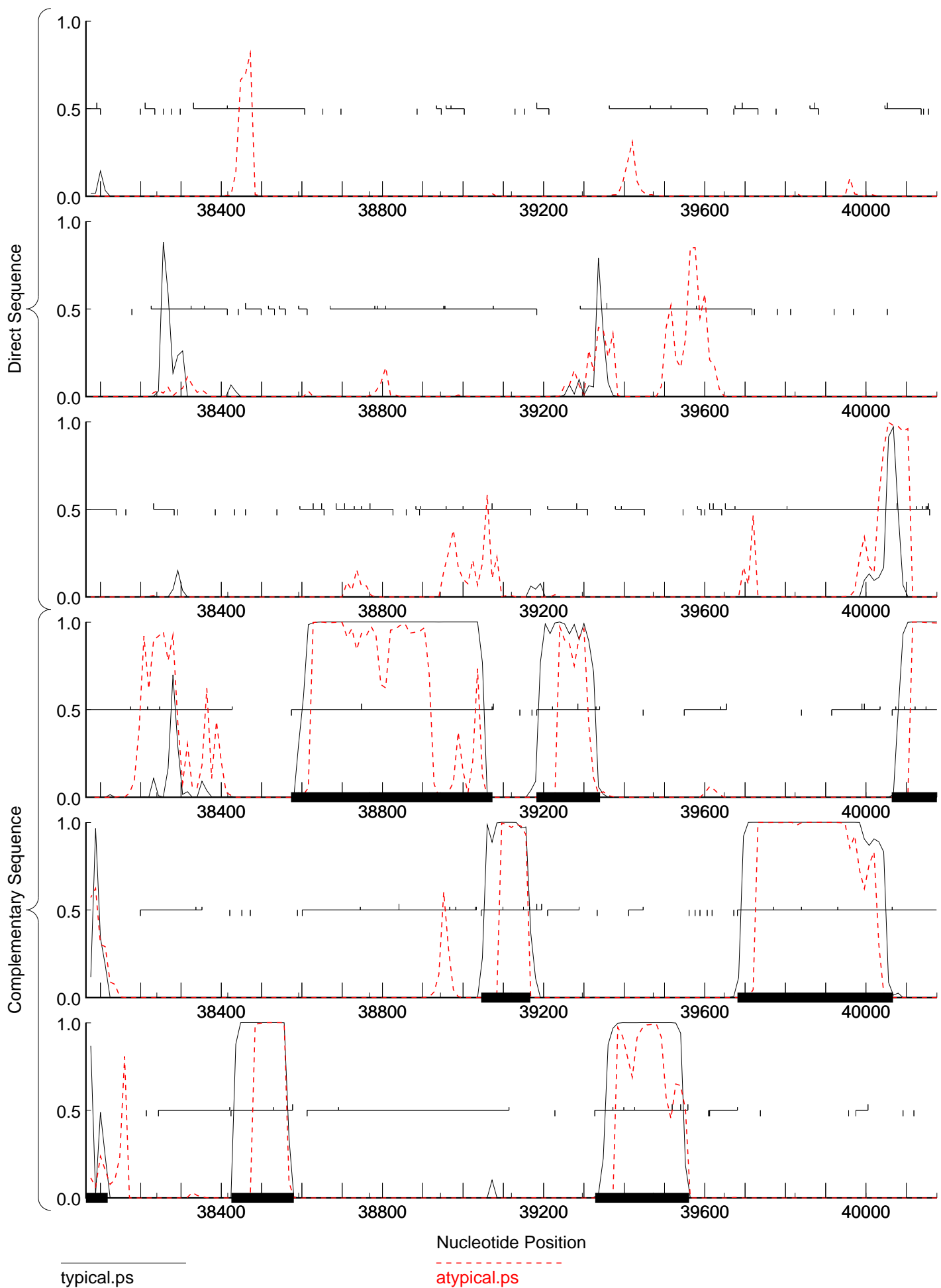
atypical.ps





typical.ps

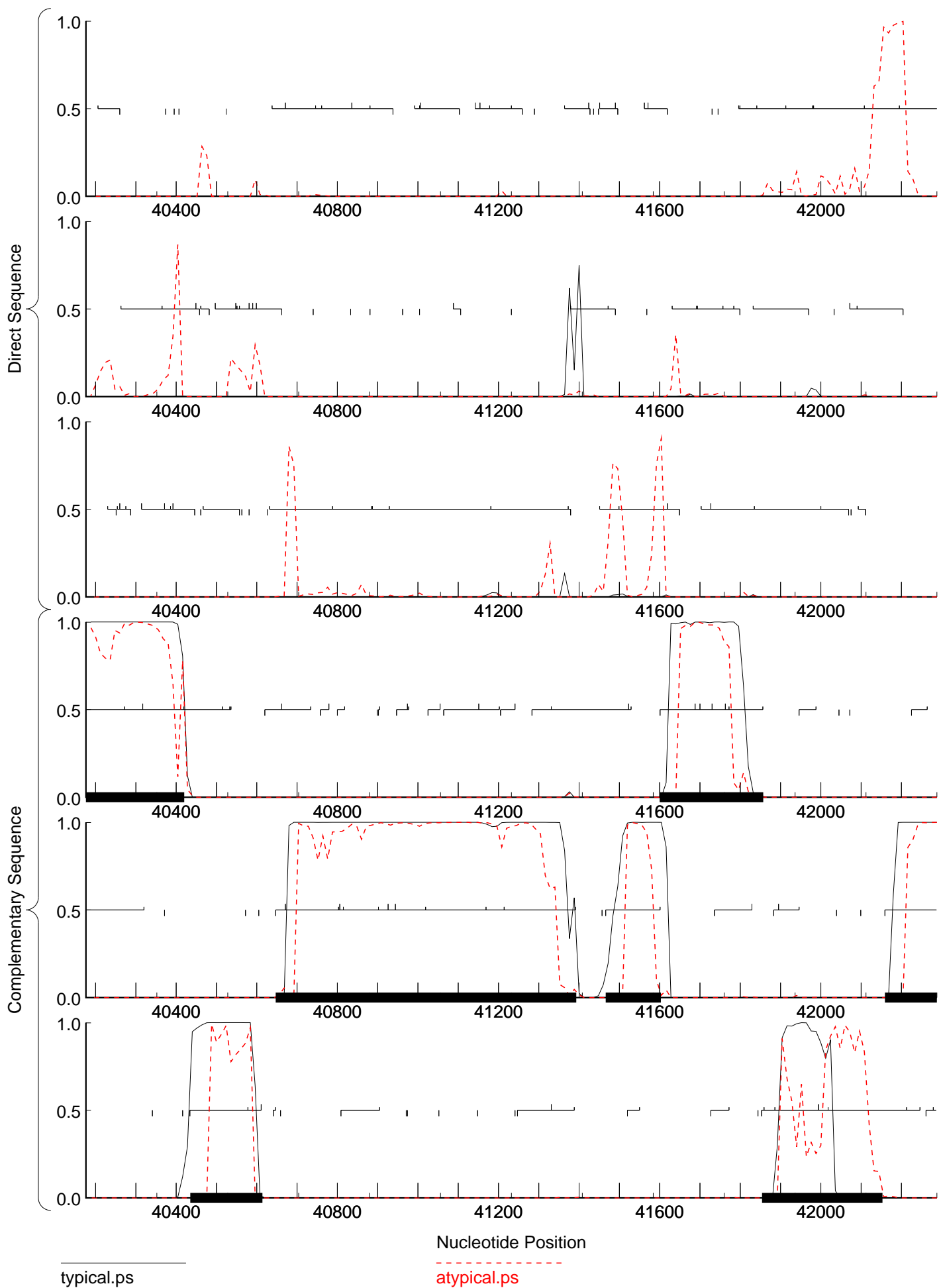
atypical.ps

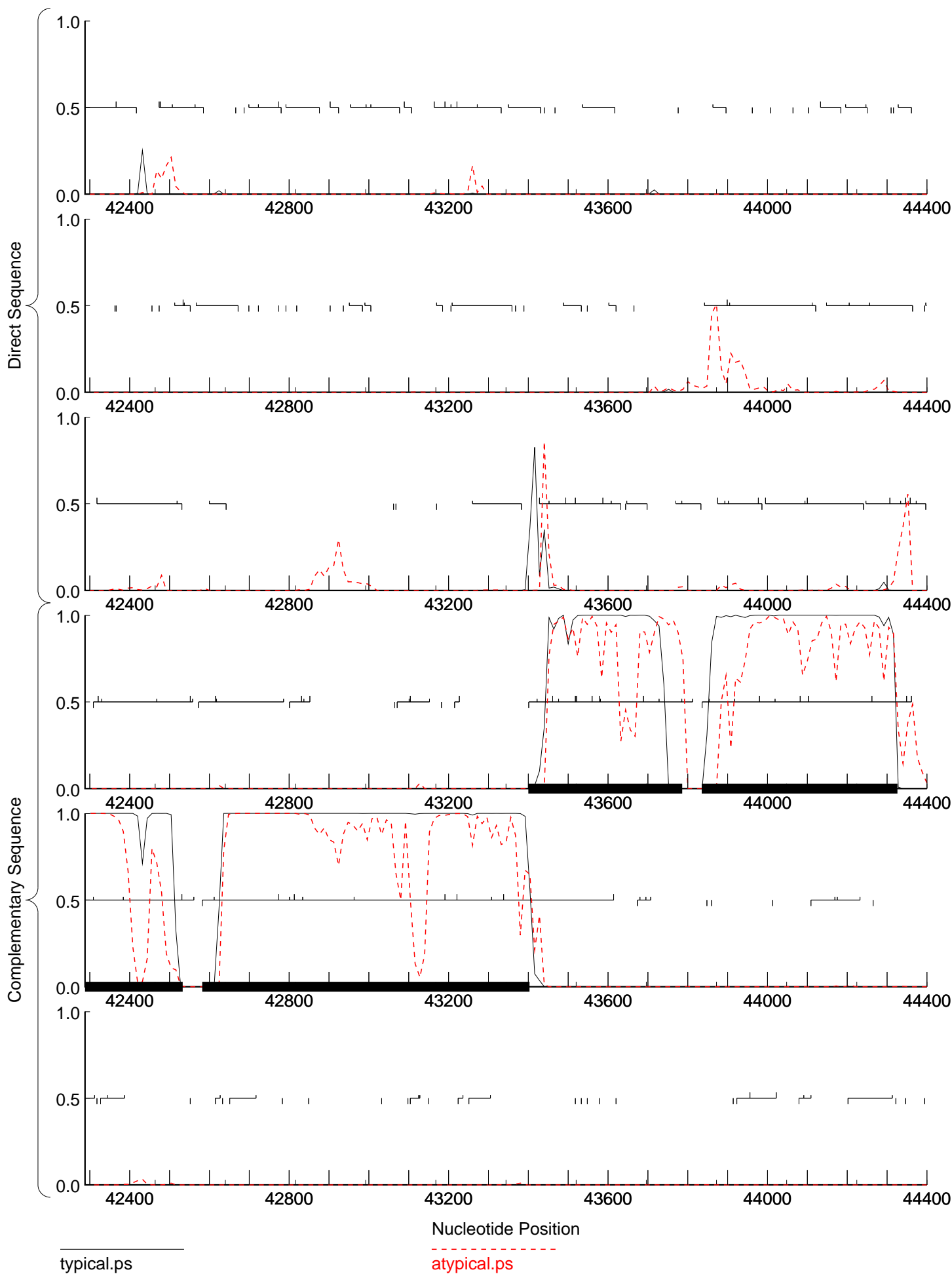


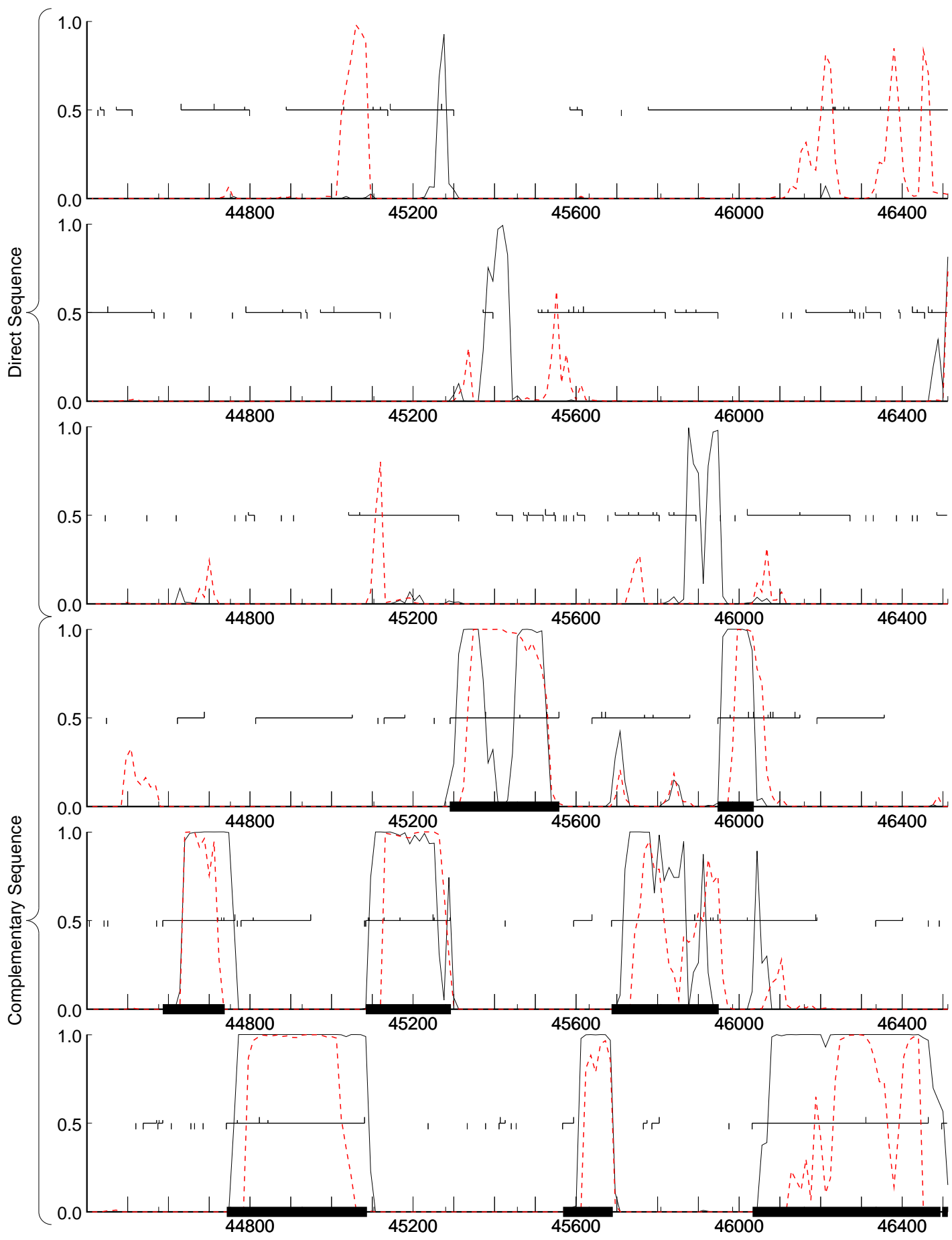
typical.ps

Nucleotide Position

atypical.ps

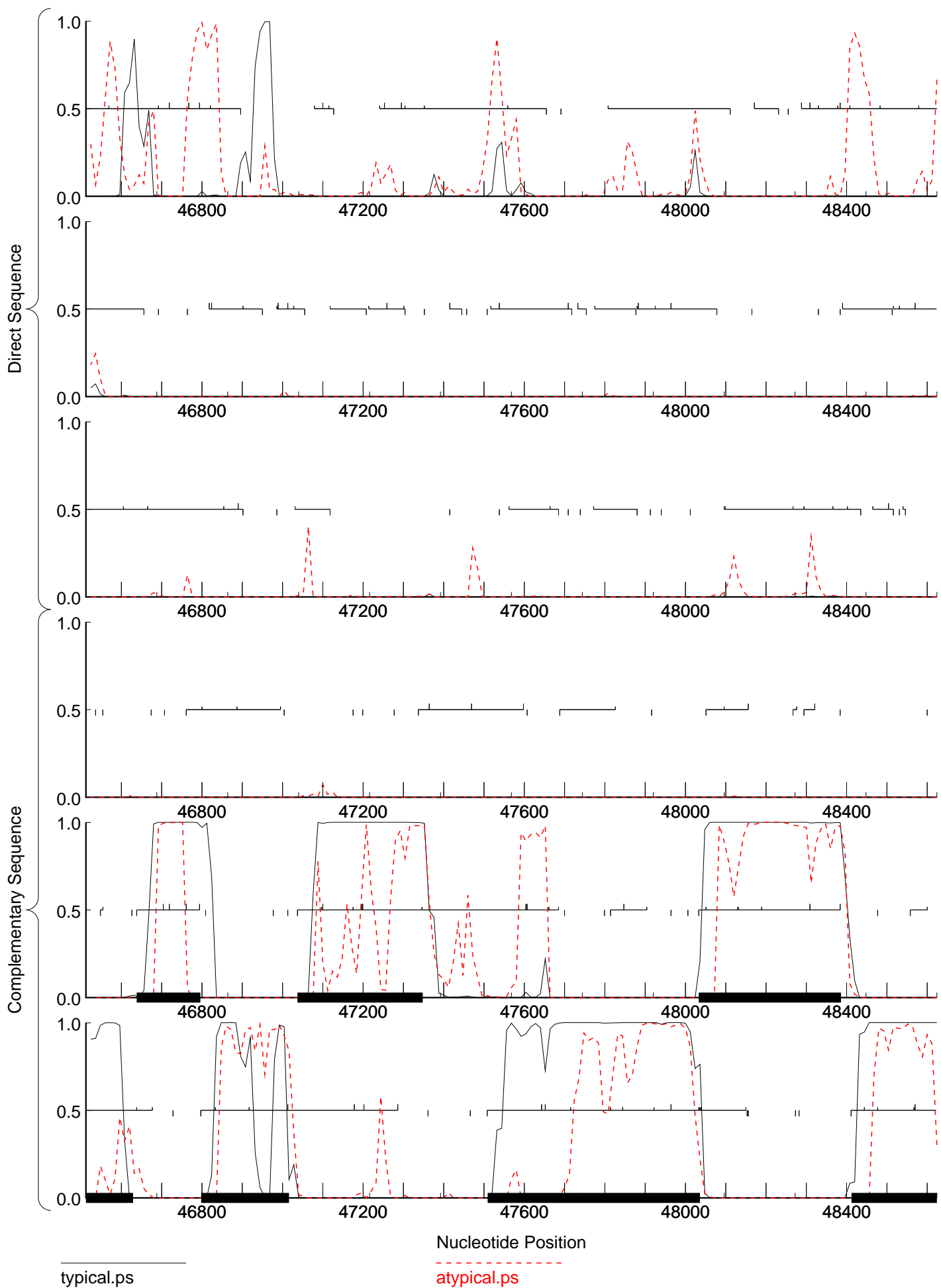






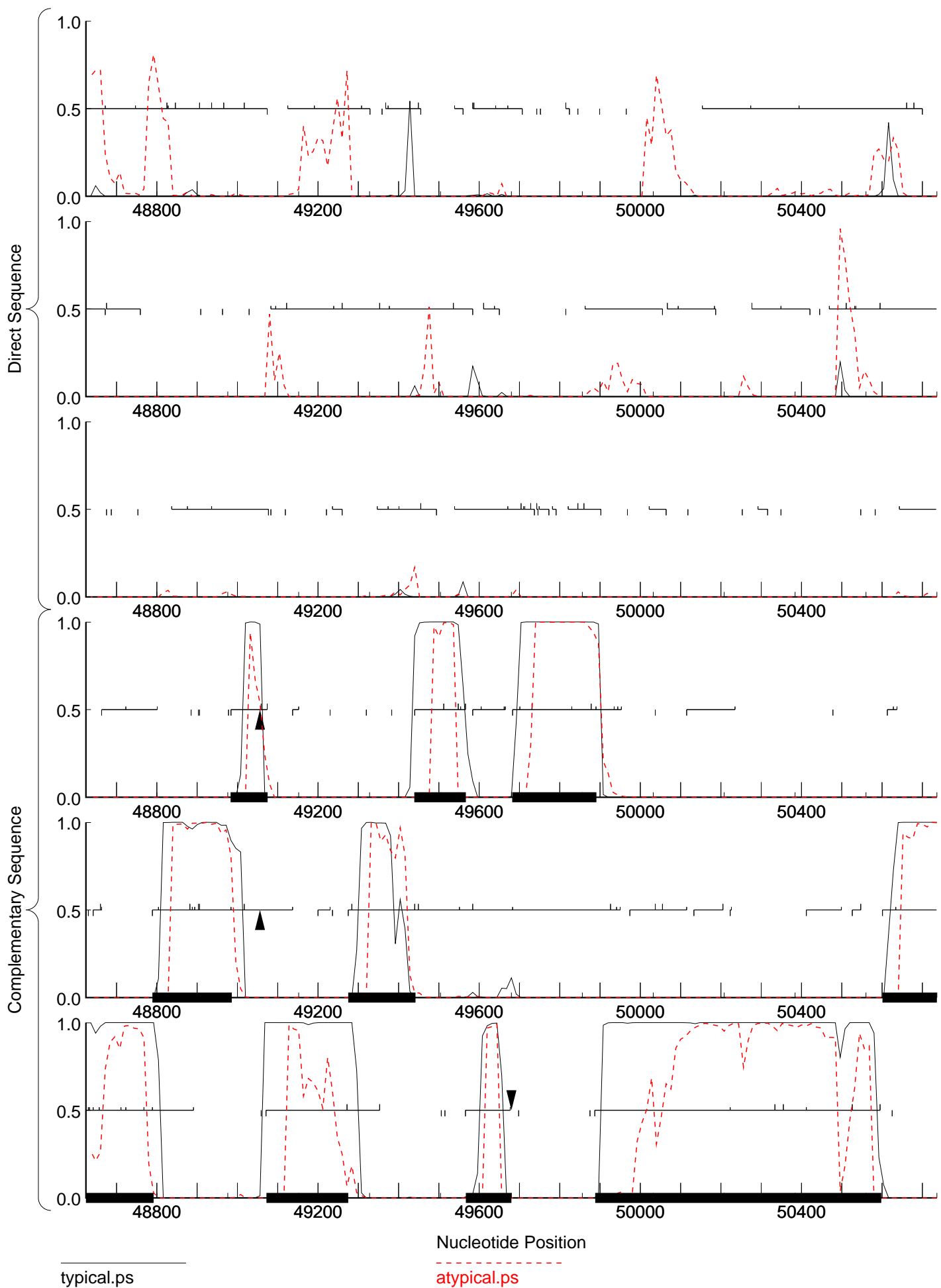
typical.ps

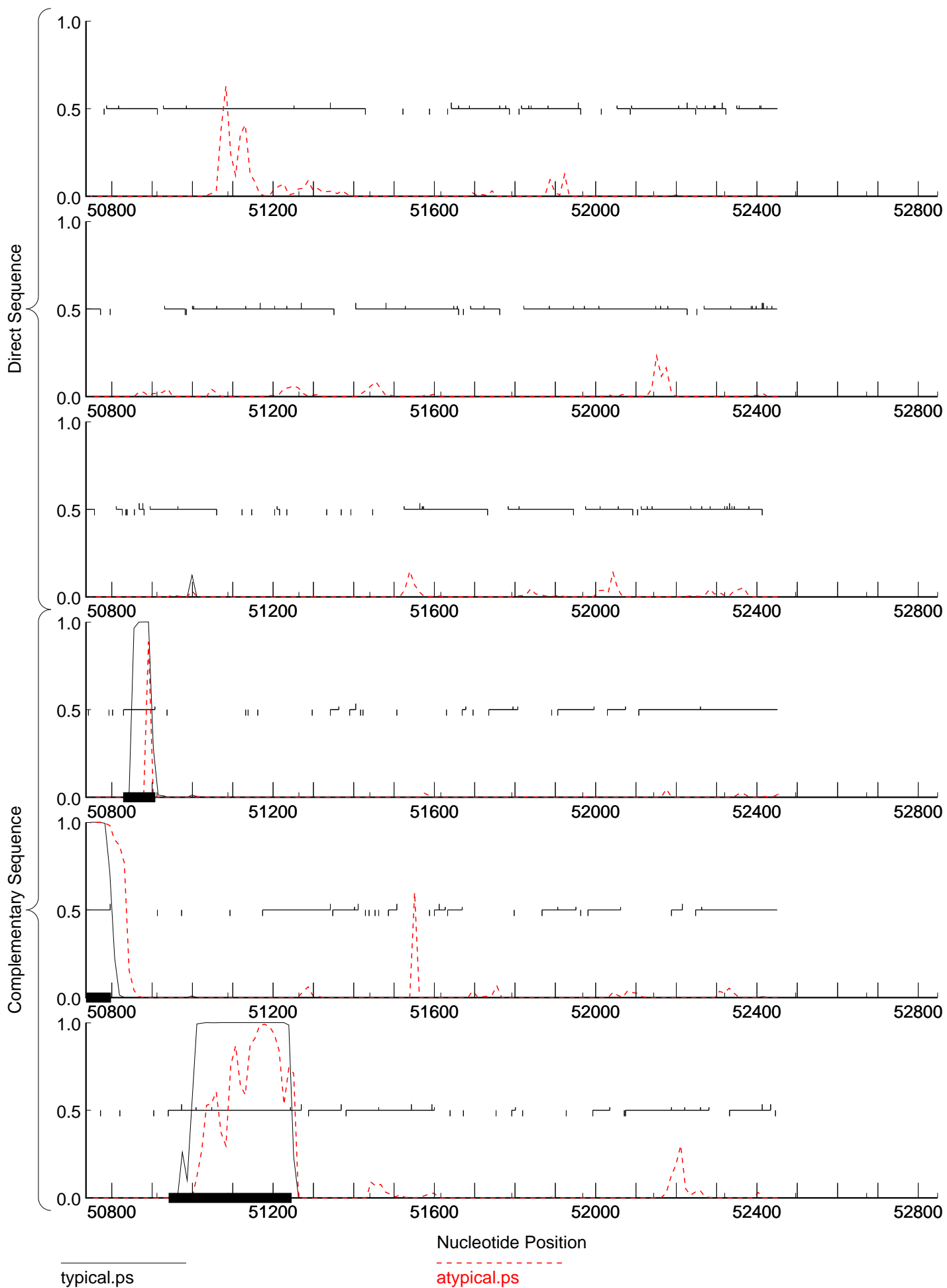
atypical.ps



typical.ps

atypical.ps





typical.ps

atypical.ps